

STATE OF ILLINOIS
DEPARTMENT OF TRANSPORTATION
DIVISION OF HIGHWAYS

**PROPOSED
HIGHWAY PLANS**

F.A.I. ROUTE 70
SECTION D7 HMA RESURF 2012-4
PROJECT IM-070-2(235)057
RESURFACING
FAYETTE COUNTY
C-97-093-12

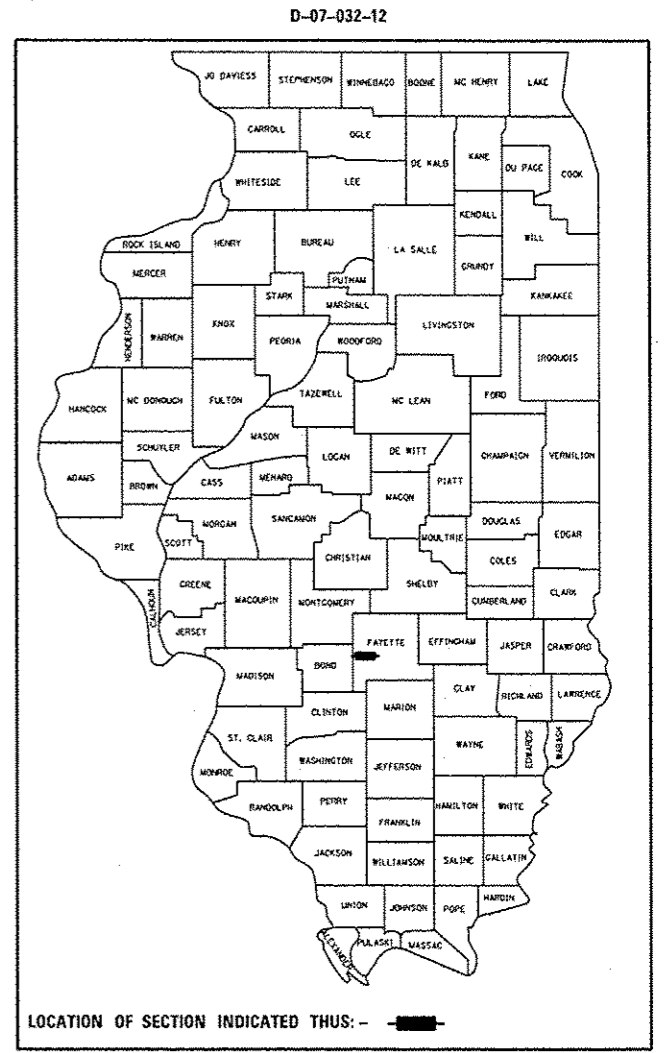
F.A.I. RTE.	SECTION	COUNTY	TOTAL SHEETS	SHEET NO.
70	D7 HMA RESURF 2012-4	Fayette	21	1
ILLINOIS			CONTRACT NO. 74570	

FOR INDEX OF SHEETS, SEE SHEET NO. 2

STATION EQUATIONS

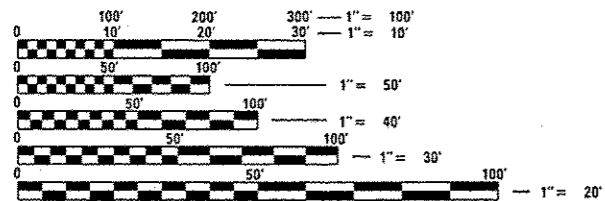
1610 + 33.67 BK = 90 + 55.19 AH
399 + 14.06 BK = 398 + 86.83 AH
519 + 40.32 BK = 519 + 12.05 AH

ADT = 20,300 (2010)



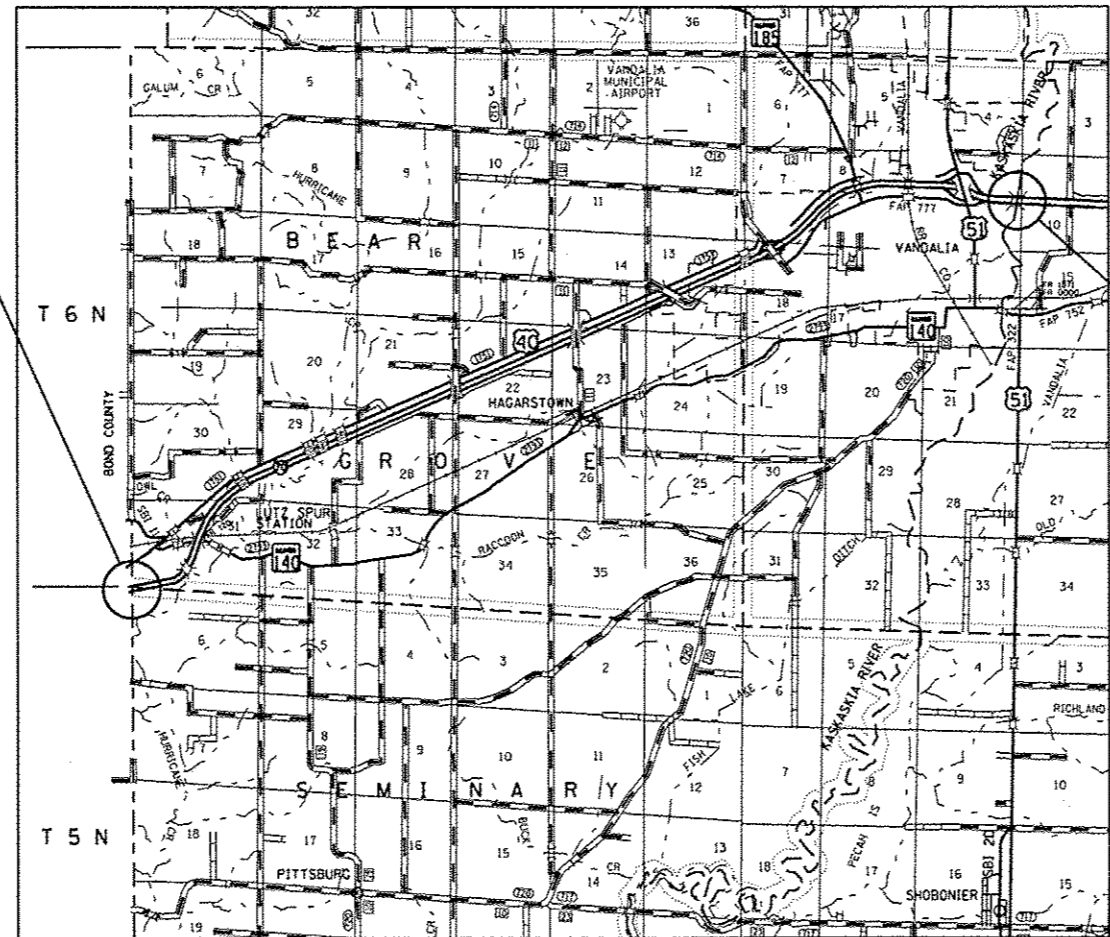
FAI ROUTE 70
D7 HMA RESURF 2012-4
PROJECT BEGINS
STA 1547 + 00.00

FAI ROUTE 70
D7 HMA RESURF 2012-4
PROJECT ENDS
STA 538 + 44.74



FULL SIZE PLANS HAVE BEEN PREPARED USING STANDARD ENGINEERING SCALES. REDUCED SIZED PLANS WILL NOT CONFORM TO STANDARD SCALES. IN MAKING MEASUREMENTS ON REDUCED PLANS, THE ABOVE SCALES MAY BE USED.

J.U.L.I.E.
JOINT UTILITY LOCATION INFORMATION FOR EXCAVATION
1-800-892-0123
OR 811



PROJECT ENGINEER: TOM RONAN
PROJECT MANAGER: TOM RONAN

CONTRACT NO. 74570

GROSS LENGTH = 51,163 FEET = 9.69 MILES
NET LENGTH = 47,045 FEET = 8.91 MILES

STATE OF ILLINOIS
DEPARTMENT OF TRANSPORTATION
DIVISION OF HIGHWAYS

SUBMITTED May 3 2012
Roger L. Driskell
DEPUTY DIRECTOR OF HIGHWAYS, REGION ENGINEER

June 29 2012
John D. Baranzelli, P.E.
ACTING ENGINEER OF DESIGN AND ENVIRONMENT

June 29 2012
William B. Fry
ACTING DIRECTOR OF HIGHWAYS, CHIEF ENGINEER

PRINTED BY THE AUTHORITY
OF THE STATE OF ILLINOIS

INDEX OF SHEETS

SHEET NO.	ITEM
1	COVER SHEET
2	INDEX OF SHEETS & GENERAL NOTES
3-4	SUMMARY OF QUANTITIES
5-6	TYPICAL SECTIONS
7-9	SCHEDULES OF QUANTITIES
10-19	PLAN SHEETS
20-21	PAVEMENT MARKING DETAILS

THE FOLLOWING STANDARDS ARE A PART OF THESE PLANS AND ARE INCLUDED AFTER SHEET NO. 21:

STD. NO.	DESCRIPTION
00001-06	STANDARD SYMBOLS, ABBREVIATIONS, AND PATTERNS
442001-04	CLASS A PATCHES
701101-02	OFF-RD OPERATIONS, MULTILANE, 15' TO 24" FROM PAVEMENT EDGE
701400-05	APPROACH TO LANE CLOSURE, FREEWAY/EXPRESSWAY
701401-06	LANE CLOSURE FREEWAY/EXPRESSWAY
701411-08	LANE CLOSURE MULTILANE AT ENTRANCE OR EXIT RAMP
701426-04	LANE CLOSURE MULTILANE INTERMITTENT OR MOVING OPER. FOR SPEEDS >=45 MPH
701901-02	TRAFFIC CONTROL DEVICES
780001-03	TYPICAL PAVEMENT MARKINGS
781001-03	TYPICAL APPLICATIONS RAISED REFLECTIVE PAVEMENT MARKERS

GENERAL NOTES

THIS SECTION SHALL BE CONSTRUCTED IN ACCORDANCE WITH THE PLANS, THE "STANDARD SPECIFICATIONS FOR ROAD AND BRIDGE CONSTRUCTION", ADOPTED JANUARY 1, 2012; THE "SUPPLEMENTAL SPECIFICATIONS AND RECURRING SPECIAL PROVISIONS" INDICATED ON THE CHECK SHEET, AND THE "SPECIAL PROVISIONS" INCLUDED IN THE PROPOSAL.

THIS PROJECT IS LOCATED IN FAYETTE COUNTY ON EASTBOUND AND WESTBOUND I-70 FROM THE CSXT RR 0.8 MILES EAST OF THE BOND COUNTY LINE TO THE KASKASKIA RIVER 0.5 MILES EAST OF THE VANDALIA INTERCHANGE. THE WORK INCLUDED IN SECTION 07 HMA RESURF 2012-4 CONSISTS OF HOT-MIX ASPHALT SURFACE REMOVAL, HOT-MIX ASPHALT RESURFACING, PAVEMENT MARKING, AND ANY OTHER WORK NECESSARY TO COMPLETE THIS PROJECT.

PAVEMENT MARKING SHALL BE APPLIED IN ACCORDANCE WITH SECTION 780 OF THE STANDARD SPECIFICATIONS. SHORT TERM PAVEMENT MARKING SHALL BE APPLIED TO THE SHOULDER UNTIL PERMANENT PAVEMENT MARKING IS APPLIED FOR THE EDGE LINE.

PERMANENT PAVEMENT MARKING ON FAI 70 SHALL BE MODIFIED URETHANE PAVEMENT MARKING OR PREFORMED PLASTIC PAVEMENT MARKING OF THE SIZE AND TYPE SPECIFIED IN THE PAVEMENT MARKING SCHEDULE. ALL PREFORMED PLASTIC PAVEMENT MARKING TYPE B SHALL BE INSTALLED AS SPECIFIED IN ARTICLE 780.07(c) OF THE "STANDARD SPECIFICATIONS FOR ROAD AND BRIDGE CONSTRUCTION".

THE TOTAL QUANTITY OF MODIFIED URETHANE PAVEMENT MARKING - LINE 4" CONSISTS OF 48,357 FEET OF WHITE.

THE TOTAL QUANTITY OF MODIFIED URETHANE PAVEMENT MARKING - LINE 8" CONSISTS OF 1,501 FEET OF WHITE.

THE TOTAL QUANTITY OF PREFORMED PLASTIC PAVEMENT MARKING, TYPE B INLAID - LINE 6" CONSISTS OF 12,901 FEET OF WHITE.

THE RAISED REFLECTIVE PAVEMENT MARKERS PLACED ON FAI 70 SHALL BE PLACED AS DOUBLE MARKERS AS SHOWN ON STANDARD 781001-03. THE TOTAL QUANTITY OF RAISED REFLECTIVE PAVEMENT MARKERS IS 1,291 ONE-WAY CRYSTAL.

THE CONTRACTOR SHALL USE EITHER RC-70, SS1H, OR SS-1HP, APPLIED AT THE RATE DIRECTED BY THE ENGINEER, FOR THE PAY ITEM BITUMINOUS MATERIALS (PRIME COAT).

THE CONTRACTOR SHALL PROVIDE INTERNET ACCESSIBILITY TO THE HOT-MIX ASPHALT PLANT QUALITY CONTROL LAB SO THAT HOT-MIX ASPHALT PLANT REPORTS CAN BE E-MAILED TO THE DISTRICT HEADQUARTERS. THIS WORK SHALL BE INCLUDED IN THE COST OF ALL HOT-MIX ASPHALT ITEMS.

THE SURFACE SHALL BE LAID AT LEAST 1/8" ABOVE THE SHOULDER EDGE SO THAT MAXIMUM DENSITY CAN BE OBTAINED.

A UNIFORMLY STRAIGHT SAW CUT SHALL BE MADE AT LOCATIONS WHERE PROPOSED NEW CONSTRUCTION WILL ABUT EXISTING BITUMINOUS CONCRETE SURFACES. THE SAW CUT SHALL BE MADE FULL DEPTH THROUGH THE EXISTING RESURFACING. THIS WORK WILL BE CONSIDERED INCLUDED IN THE COST OF THE CONTRACT ITEMS INVOLVED AND NO EXTRA COMPENSATION WILL BE ALLOWED.

THE RESIDENT ENGINEER SHALL BE THE SOLE JUDGE CONCERNING THE CURING TIME FOR THE VARIOUS BITUMINOUS LIFTS.

PRIOR TO PLACEMENT OF BITUMINOUS MATERIALS (PRIME COAT), THE ENTIRE SURFACE AREA SHALL BE CLEANED AND DRIED WITH COMPRESSED AIR AS DIRECTED BY THE RESIDENT ENGINEER.

THE FOLLOWING MIXTURE REQUIREMENTS ARE APPLICABLE TO THIS PROJECT:

MIXTURE USE:	HMA SURFACE COURSE (1 1/2")
PG GRADE:	SBS PG 70-22
RAP%:	0%
DESIGN AIR VOIDS:	4% @ NDESIGN = 105
MIXTURE COMPOSITION:	1L-9.5
FRICTION AGGREGATE:	MIXTURE D

THE FOLLOWING APPLICATION RATES HAVE BEEN USED IN CALCULATING PLAN QUANTITIES:

HOT MIX ASPHALT	112 LBS/SO YD/IN
BITUMINOUS MATERIALS (PRIME COAT)	0.10 GALLON/SO YD
AGGREGATE PRIME COAT	4.00 LBS/SO YD

FILE NAME: c:\pwork\puidot\karter\10298200\077	USER NAME: karter	DESIGNED: -	REVISED: -	STATE OF ILLINOIS DEPARTMENT OF TRANSPORTATION	INDEX OF SHEETS AND GENERAL NOTES				F.A.I. RTE:	SECTION	COUNTY	TOTAL SHEETS	SHEET NO.
	570-shr-index.dgn	DRAWN: -	REVISED: -		70	07 HMA RESURF 2012-4	Fayette	21	2				
	PLOT SCALE: 1/8" = 1'-0"	CHECKED: -	REVISED: -		CONTRACT NO. 74570								
	PLOT DATE: 6/5/2012	DATE: -	REVISED: -		ILLINOIS FED. AID PROJECT								
					SCALE: NA	SHEET 1	OF 1	SHEETS	STA. TO STA.				

90% FED.
10% STATE

90% FED.
10% STATE

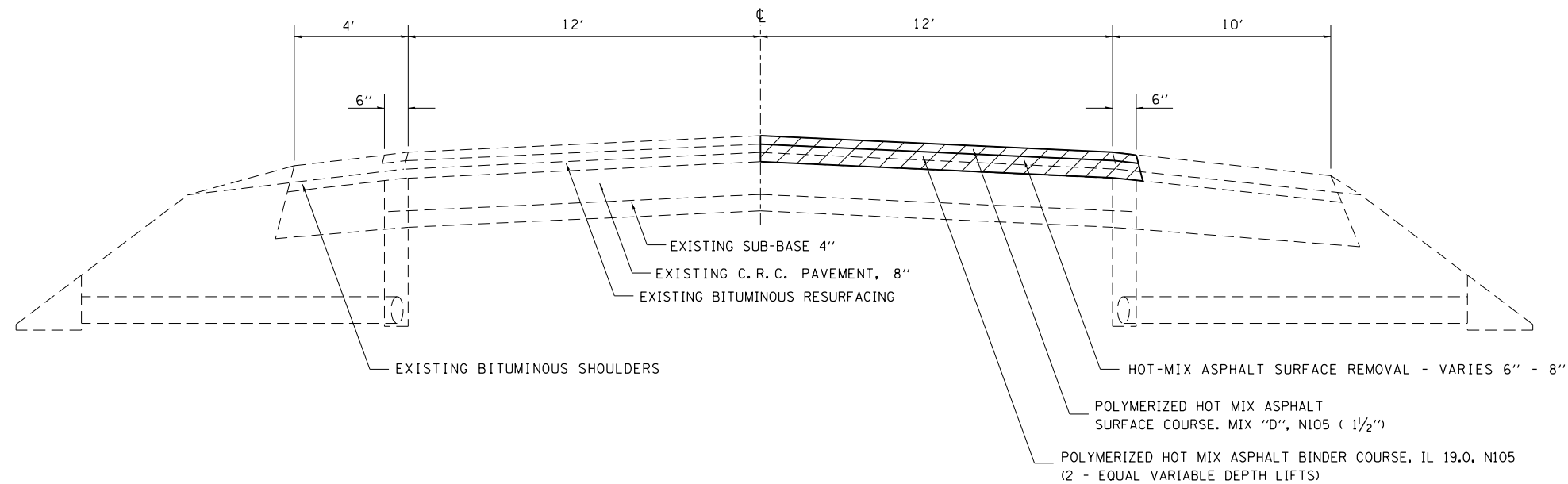
SUMMARY OF QUANTITIES			TOTAL QUANTITIES	CONSTRUCTION TYPE CODE	
CODE NO	ITEM	UNIT		RURAL 0005	URBAN 0005
40600100	BITUMINOUS MATERIALS (PRIME COAT)	GALLON	7167	4325	2842
40600300	AGGREGATE (PRIME COAT)	TON	143	86	57
40600990	TEMPORARY RAMP	SO YD	120	72	48
40603244	POLYMERIZED HOT-MIX ASPHALT BINDER COURSE, IL-19.0, FG, N105	TON	18065	10913	7152
40603550	POLYMERIZED HOT-MIX ASPHALT SURFACE COURSE, MIX "D", N105	TON	6020	3633	2387
44000173	HOT-MIX ASPHALT SURFACE REMOVAL, 6"	SO YD	71517	43138	28379
44200525	CLASS A PATCHES, TYPE I, 8 INCH	SO YD	8	4	4
44200529	CLASS A PATCHES, TYPE II, 8 INCH	SO YD	295	70	225
44200533	CLASS A PATCHES, TYPE III, 8 INCH	SO YD	19		19
44200535	CLASS A PATCHES, TYPE IV, 8 INCH	SO YD	33		33
44213000	PATCHING REINFORCEMENT	SO YD	355	74	281
44213200	SAW CUTS	FOOT	2654	572	2082
44213204	TIE BARS 3/4"	EACH	12		12

SUMMARY OF QUANTITIES			TOTAL QUANTITIES	CONSTRUCTION TYPE CODE	
CODE NO	ITEM	UNIT		RURAL 0005	URBAN 0005
67000500	ENGINEER'S FIELD OFFICE, TYPE B	CAL MO	4	3	1
67100100	MOBILIZATION	L SUM	1	0.6	0.4
70100420	TRAFFIC CONTROL AND PROTECTION, STANDARD 701411	EACH	6		6
70100800	TRAFFIC CONTROL AND PROTECTION, STANDARD 701401	L SUM	1	0.6	0.4
70103815	TRAFFIC CONTROL SURVEILLANCE	CAL DA	26	16	10
70300100	SHORT TERM PAVEMENT MARKING	FOOT	1945	1246	699
70300220	TEMPORARY PAVEMENT MARKING - LINE 4"	FOOT	48357	32104	16253
70300250	TEMPORARY PAVEMENT MARKING - LINE 8"	FOOT	1501		1501
70301000	WORK ZONE PAVEMENT MARKING REMOVAL	SO FT	642	411	231
X 78004230	PREFORMED PLASTIC PAVEMENT MARKING, TYPE B - INLAID - LINE 6"	FOOT	12901	7786	5115
X 78009004	MODIFIED URETHANE PAVEMENT MARKING - LINE 4"	FOOT	48357	32104	16253
X 78009008	MODIFIED URETHANE PAVEMENT MARKING - LINE 8"	FOOT	1501		1501


X SPECIALTY ITEM

FILE NAME =	USER NAME = swrttrw	DESIGNED -	REVISED -	STATE OF ILLINOIS DEPARTMENT OF TRANSPORTATION	SUMMARY OF QUANTITIES			F.A.I. RTEL	SECTION	COUNTY	TOTAL SHEETS	SHEET NO.	
c:\pwwork\pwwork\swrttrw\d0298200\077	570-shl-soq.dgn	DRAWN -	REVISED -		SCALE: NA	SHEET 1 OF 2 SHEETS	STA.	TO STA.	70	D7 HMA RESURF 2012-4	Fayette	21	3
	PLOT SCALE = 100.0000 1/2 in.	CHECKED -	REVISED -		CONTRACT NO. 74570								
	PLOT DATE = 6/5/2012	DATE -	REVISED -		ILLINOIS FED. AID PROJECT								

TYPICAL CROSS SECTION
 F. A. I. 70 EASTBOUND DRIVING LANE ONLY
 STATION 1547+00.00 TO STATION 1547+84.15

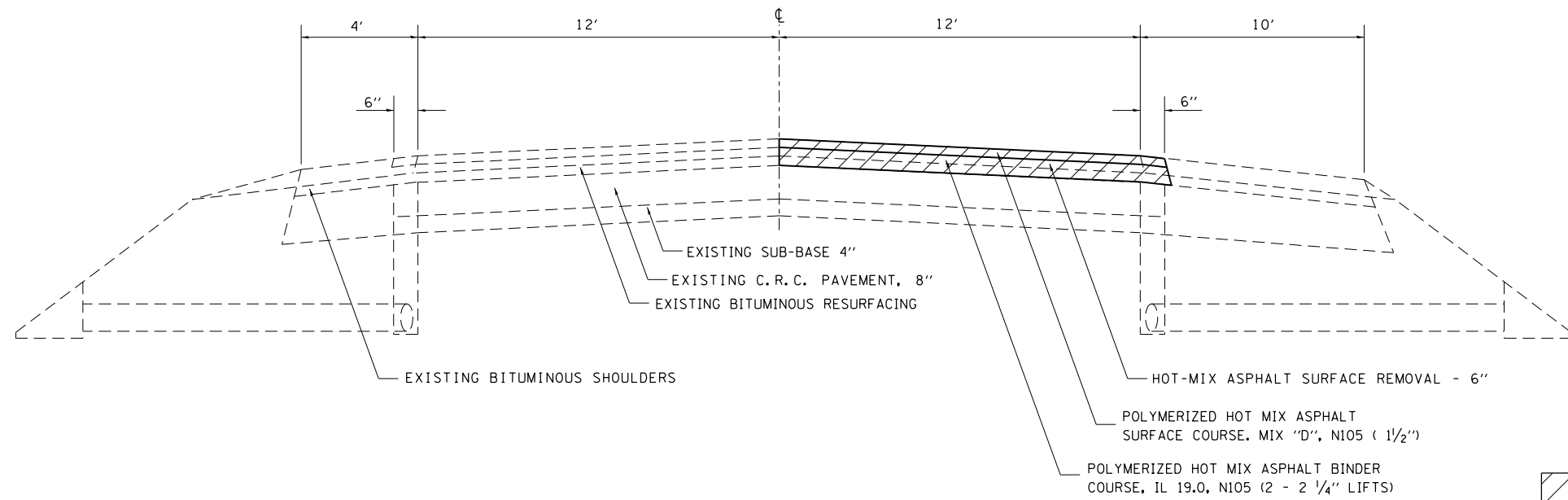


NOT DRAWN TO SCALE

 HOT-MIX ASPHALT SURFACE REMOVAL - VARIABLE DEPTH

TYPICAL CROSS SECTION
 F. A. I. 70 EASTBOUND DRIVING LANE ONLY

STATION 1551+15.45 TO STATION 1594+05.45	STATION 340+82.00 TO STATION 380+43.00
STATION 1595+10.70 TO STATION 1610+33.67	STATION 380+71.00 TO STATION 399+14.06
STATION 90+55.19 TO STATION 119+43.67	STATION 398+86.83 TO STATION 455+67.29
STATION 120+56.49 TO STATION 124+96.46	STATION 456+93.02 TO STATION 482+22.90
STATION 139+55.16 TO STATION 275+30.00	STATION 483+71.40 TO STATION 519+40.32
STATION 285+86.00 TO STATION 332+90.00	STATION 519+12.05 TO STATION 538+44.74



NOT DRAWN TO SCALE

 HOT-MIX ASPHALT SURFACE REMOVAL - 6"

FILE NAME =	USER NAME = steffenmk	DESIGNED -	REVISED -
ci:\pwork\pwork\dot\steffenmk\d0298200\074570-sht-typicals.dgn		DRAWN -	REVISED -
PLOT SCALE = 100.0000' / 1in.		CHECKED -	REVISED -
PLOT DATE = 3/20/2012		DATE -	REVISED -

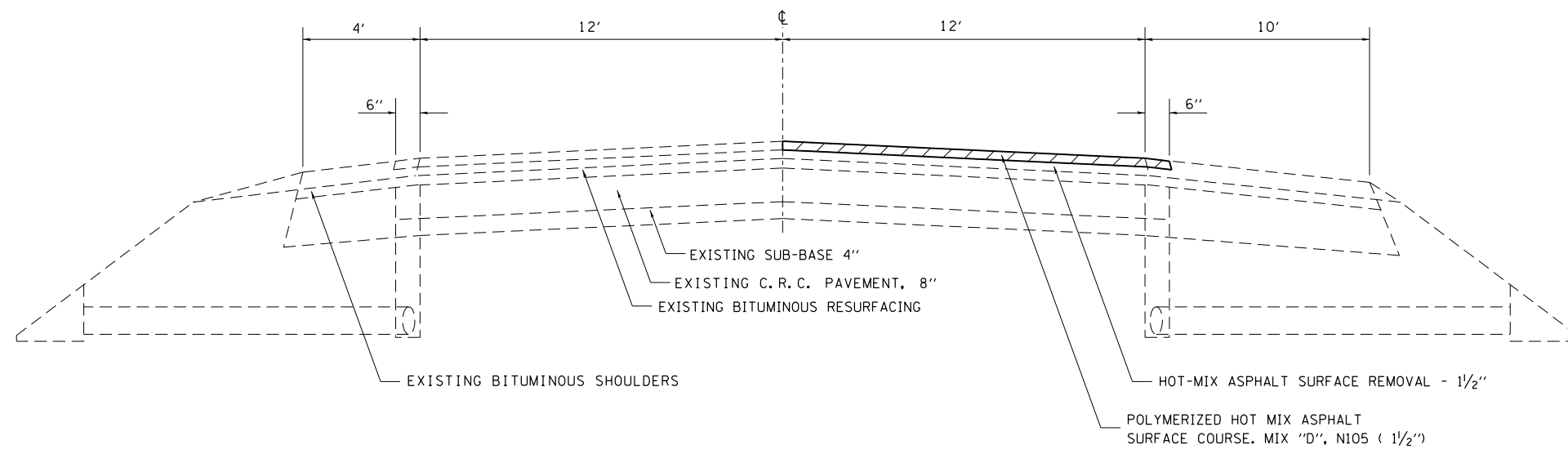
**STATE OF ILLINOIS
 DEPARTMENT OF TRANSPORTATION**

TYPICAL CROSS SECTIONS

SCALE: NA SHEET NO. 1 OF 2 SHEETS STA. TO STA.

F.A.I. RTE.	SECTION	COUNTY	TOTAL SHEETS	SHEET NO.
70	D7 HMA RESURF 2012-4	Fayette	21	5
CONTRACT NO. 74570			ILLINOIS FED. AID PROJECT	

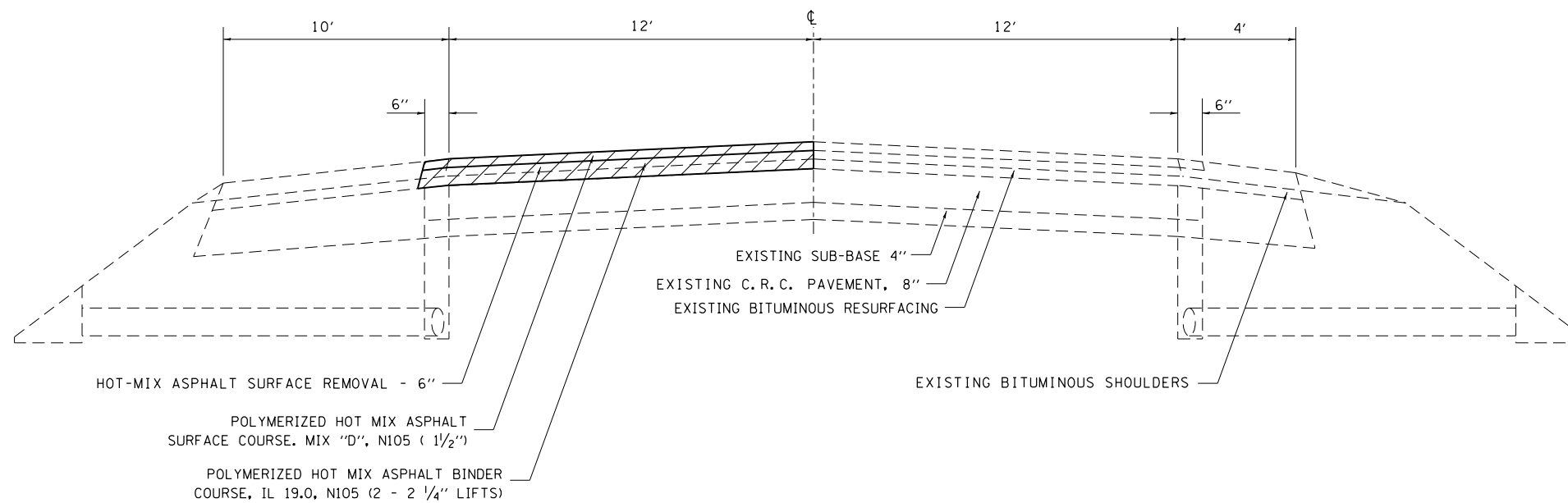
TYPICAL CROSS SECTION
F. A. I. 70 EASTBOUND DRIVING LANE ONLY
 STATION 380+43.00 TO STATION 380+71.00



NOT DRAWN TO SCALE

 HOT-MIX ASPHALT SURFACE REMOVAL - 1 1/2"

TYPICAL CROSS SECTION
F. A. I. 70 WESTBOUND DRIVING LANE ONLY
 STATION 380+71.00 TO STATION 399+14.06
 STATION 398+86.86 TO STATION 426+00.00



NOT DRAWN TO SCALE

 HOT-MIX ASPHALT SURFACE REMOVAL - 6"

FILE NAME =	USER NAME = steffenmk	DESIGNED -	REVISED -
ct:\pw\work\p\dot\steffenmk\d0298200\074570-sht-typicals.dgn		DRAWN -	REVISED -
		CHECKED -	REVISED -
		DATE -	REVISED -

STATE OF ILLINOIS
DEPARTMENT OF TRANSPORTATION

TYPICAL CROSS SECTIONS

SCALE: NA SHEET NO. 2 OF 2 SHEETS STA. TO STA.

F.A.I. RTE.	SECTION	COUNTY	TOTAL SHEETS	SHEET NO.
70	DT HMA RESURF 2012-4	Fayette	21	6
CONTRACT NO. 74570				
ILLINOIS FED. AID PROJECT				

PAVING SCHEDULE

STATION TO STATION				LENGTH FOOT	HOT-MIX ASPHALT SURFACE REMOVAL (VARIABLE DEPTH) SQ YD	HOT-MIX ASPHALT SURFACE REMOVAL, 6" SQ YD	BITUMINOUS MATERIALS (PRIME COAT) GALLON	AGGREGATE (PRIME COAT) TON	POLYMERIZED HOT-MIX ASPHALT SURFACE COURSE, MIX "D", N105 TON	POLYMERIZED HOT-MIX ASPHALT BINDER COURSE, IL-19, O, N105 TON	MATERIAL TRANSFER DEVICE TON	PERFORMED PLASTIC PAVEMENT MARKING, TYPE B - INLAID - 6" FOOT	EPOXY PAVEMENT MARKING - LINE 4" FOOT
EAST BOUND DRIVING LANE													
MILL VAR. DEPTH (6"-8")	1547+00.00	TO	1547+84.15	MILL VAR. DEPTH (6"-8")	84.1		12	0.2	10	43	52		
BRIDGE OMISSION	1547+84.15	TO	1551+15.45	BRIDGE OMISSION	331.3								
MILL 6", BINDER 4.5", SURFACE 1.5"	1551+15.45	TO	1573+87.00	MILL 6", BINDER 4.5", SURFACE 1.5"	2271.5	3155	315	6.3	265	795	1060		
MILL 6", BINDER 4.5", SURFACE 1.5"	1573+87.00	TO	1574+13.00	MILL 6", BINDER 4.5", SURFACE 1.5"	26.0	36	4	0.1	3	9	12		
MILL 6", BINDER 4.5", SURFACE 1.5"	1574+13.00	TO	1594+05.45	MILL 6", BINDER 4.5", SURFACE 1.5"	1992.5	2767	277	5.5	232	697	930		
BRIDGE OMISSION	1594+05.45	TO	1595+10.70	BRIDGE OMISSION	105.3								
MILL 6", BINDER 4.5", SURFACE 1.5"	1595+10.70	TO	1610+33.67	MILL 6", BINDER 4.5", SURFACE 1.5"	1523.0	2115	212	4.2	178	533	711		
	1610+33.67	BK =	90+55.19 AH										
MILL 6", BINDER 4.5", SURFACE 1.5"	90+55.19	TO	119+43.67	MILL 6", BINDER 4.5", SURFACE 1.5"	2888.5	4012	401	8.0	337	1011	1348		
BRIDGE OMISSION	119+43.67	TO	120+56.49	BRIDGE OMISSION	112.8								
MILL 6", BINDER 4.5", SURFACE 1.5"	120+56.49	TO	124+96.46	MILL 6", BINDER 4.5", SURFACE 1.5"	440.0	611	61	1.2	51	154	205		
BRIDGE OMISSION	124+96.46	TO	126+74.64	BRIDGE OMISSION	178.2								
PAVING OMISSION	126+74.64	TO	137+21.96	PAVING OMISSION	1047.3								
BRIDGE OMISSION	137+21.96	TO	139+55.16	BRIDGE OMISSION	233.2								
MILL 6", BINDER 4.5", SURFACE 1.5"	139+55.16	TO	237+00.00	MILL 6", BINDER 4.5", SURFACE 1.5"	9744.8	13535	1353	27.1	1137	3411	4548		
MILL 6", BINDER 4.5", SURFACE 1.5"	237+00.00	TO	275+30.00	MILL 6", BINDER 4.5", SURFACE 1.5"	3830.0	5319	532	10.6	447	1341	1787		
PAVING OMISSION	275+30.00	TO	285+86.00	PAVING OMISSION	1056.0								
MILL 6", BINDER 4.5", SURFACE 1.5"	285+86.00	TO	332+90.00	MILL 6", BINDER 4.5", SURFACE 1.5"	4704.0	6533	653	13.1	549	1646	2195		
PAVING OMISSION	332+90.00	TO	340+82.00	PAVING OMISSION	792.0								
MILL 6", BINDER 4.5", SURFACE 1.5"	340+82.00	TO	377+21.00	MILL 6", BINDER 4.5", SURFACE 1.5"	3639.0	5054	505	10.1	425	1274	1698		
EASTBOUND DRIVING LANE RURAL TOTALS						117	43138	4325	86.5	3633	10913	14547	
MILL 6", BINDER 4.5", SURFACE 1.5"	377+21.00	TO	380+43.00	MILL 6", BINDER 4.5", SURFACE 1.5"	322.0	447	45	0.9	38	113	150		
MILL 1.5", SURFACE 1.5"	380+43.00	TO	380+71.00	MILL 1.5", SURFACE 1.5"	28.0	39	4	0.1	3		3		
MILL 6", BINDER 4.5", SURFACE 1.5"	380+71.00	TO	397+80.00	MILL 6", BINDER 4.5", SURFACE 1.5"	1709.0	2374	237	4.7	199	598	798		
MILL 6", BINDER 4.5", SURFACE 1.5"	397+80.00	TO	399+14.06	MILL 6", BINDER 4.5", SURFACE 1.5"	134.1	186	19	0.4	16	47	63		
	399+14.06	BK =	398+86.83 AH										
MILL 6", BINDER 4.5", SURFACE 1.5"	398+86.86	TO	455+67.29	MILL 6", BINDER 4.5", SURFACE 1.5"	5680.4	7889	789	15.8	663	1988	2651		
BRIDGE OMISSION	455+67.29	TO	456+93.02	BRIDGE OMISSION	125.7								
MILL 6", BINDER 4.5", SURFACE 1.5"	456+93.02	TO	482+22.90	MILL 6", BINDER 4.5", SURFACE 1.5"	2529.9	3514	351	7.0	295	885	1181		
BRIDGE OMISSION	482+22.90	TO	483+71.40	BRIDGE OMISSION	148.5								
MILL 6", BINDER 4.5", SURFACE 1.5"	483+71.40	TO	519+40.32	MILL 6", BINDER 4.5", SURFACE 1.5"	3568.9	4957	496	9.9	416	1249	1665		
	519+40.32	BK =	519A+12.05 AH										
MILL 6", BINDER 4.5", SURFACE 1.5"	519+12.05	TO	538+44.74	MILL 6", BINDER 4.5", SURFACE 1.5"	1932.7	2684	268	5.4	225	676	902		
EASTBOUND DRIVING LANE URBAN TOTALS						39	22051	2209	44.2	1856	5557	7413	
WESTBOUND DRIVING LANE													
MILL 6", BINDER 4.5", SURFACE 1.5"	380+71.00	TO	397+80.00	MILL 6", BINDER 4.5", SURFACE 1.5"	1709.0	2374	237	4.7	199	598	798		
MILL 6", BINDER 4.5", SURFACE 1.5"	397+80.00	TO	399+14.06	MILL 6", BINDER 4.5", SURFACE 1.5"	134.1	186	19	0.4	16	47	63		
	399+14.06	BK =	398+86.83 AH										
MILL 6", BINDER 4.5", SURFACE 1.5"	398+86.86	TO	426+00.00	MILL 6", BINDER 4.5", SURFACE 1.5"	2713.1	3768	377	7.5	317	950	1266		
WESTBOUND DRIVING LANE URBAN TOTALS						6328	633	12.7	532	1595	2126		
RURAL PROJECT TOTALS						117	43138	4325	86.5	3633	10913	14547	
URBAN PROJECT TOTALS						39	28379	2842	56.8	2387	7152	9539	
PROJECT TOTALS						156	71517	7167	143	6021	18065	24085	

PAVEMENT MARKING SCHEDULE				PREFORMED PLASTIC PAVEMENT MARKING, TYPE B - INLAID - 6"	MODIFIED URETHANE PAVEMENT MARKING - LINE 4"	MODIFIED URETHANE PAVEMENT MARKING - LINE 8"	MODIFIED URETHANE PAVEMENT MARKING - LINE 18"	TEMPORARY PAVEMENT MARKING - LINE 4"	TEMPORARY PAVEMENT MARKING - LINE 8"	SHORT TERM PAVEMENT MARKING	WORK ZONE PAVEMENT MARKING REMOVAL	RAISED REFLECTIVE PAVEMENT MARKERS
STATION TO STATION		LENGTH FOOT	FOOT	FOOT	FOOT	FOOT	FOOT	FOOT	FOOT	FOOT	SO FT	EACH
EAST BOUND DRIVING LANE												
1547+00.00	TO	1547+84.15	84.1	21	84			84		3	1.1	2
1547+84.15	TO	1551+15.45	331.3		331			331				
1551+15.45	TO	1573+87.00	2271.5	568	2272			2272		91	30.0	57
1573+87.00	TO	1574+13.00	26.0	7	26			26		1	0.3	1
1574+13.00	TO	1594+05.45	1992.5	498	1992			1992		80	26.3	50
1594+05.45	TO	1595+10.70	105.3		105			105				
1595+10.70	TO	1610+33.67	1523.0	381	1523			1523		61	20.1	38
1610+33.67	BK=	90+55.19 AH										
90+55.19	TO	119+43.67	2888.5	722	2888			2888		116	38.1	72
119+43.67	TO	120+56.49	112.8		113			113				
120+56.49	TO	124+96.46	440.0	110	440			440		18	5.8	11
124+96.46	TO	126+74.64	178.2		178			178				
126+74.64	TO	137+21.96	1047.3									
137+21.96	TO	139+55.16	233.2		233			233				
139+55.16	TO	237+00.00	9744.8	2436	9745			9745		390	128.6	244
237+00.00	TO	275+30.00	3830.0	958	3830			3830		153	50.6	96
275+30.00	TO	285+86.00	1056.0									
285+86.00	TO	332+90.00	4704.0	1176	4704		24	4704		188	62.1	118
332+90.00	TO	340+82.00	792.0									
340+82.00	TO	377+21.00	3639.0	910	3639			3639		146	48.0	91
EASTBOUND DRIVING LANE RURAL TOTALS				7786	32104	0	24	32104	0	1246	411.1	779
377+21.00	TO	380+43.00	322.0	81	149			149		6	2.0	8
380+43.00	TO	380+71.00	28.0	7	28			28		1	0.4	1
380+71.00	TO	397+80.00	1709.0	427	1267	442		1267	442	68	22.6	43
397+80.00	TO	399+14.06	134.1	34	134			134		5	1.8	3
399+14.06	BK=	398+86.83 AH										
398+86.86	TO	455+67.29	5680.4	1420	4764	104		4764	104	195	64.3	142
455+67.29	TO	456+93.02	125.7		126			126				
456+93.02	TO	482+22.90	2529.9	632	2530			2530		101	33.4	63
482+22.90	TO	483+71.40	148.5		149			149				
483+71.40	TO	519+40.32	3568.9	892	2961	342		2961	342	132	43.6	89
519+40.32	BK=	519A+12.05 AH								0		
519+12.05	TO	538+44.74	1932.7	483	1015	111		1015	111	45	14.9	48
EASTBOUND DRIVING LANE URBAN TOTALS				3976	13122	999		13122	999	554	182.8	398
WESTBOUND DRIVING LANE												
380+71.00	TO	397+80.00	1709.0	427	838	104		838	104	38	12.43	43
397+80.00	TO	399+14.06	134.1	34	134			134		5	1.77	3
399+14.06	BK=	398+86.83 AH										
398+86.86	TO	426+00.00	2713.1	678	2159	398		2159	398	102	33.75	68
WESTBOUND DRIVING LANE URBAN TOTALS				1139	3131	502		3131	502	145	47.96	114
RURAL PROJECT TOTALS				7786	32104	0	24	32104	0	1246	411	779
URBAN PROJECT TOTALS				5115	16253	1501	0	16253	1501	699	231	512
PROJECT TOTALS				12901	48358	1501	24	48358	1501	1945	642	1290

FILE NAME =	USER NAME = steffenmk	DESIGNED -	REVISED -
c:\pw\work\p\dot\steffenmk\d0298200\074570-sht-sch.dgn		DRAWN -	REVISED -
	PLOT SCALE = 100.0000' / in.	CHECKED -	REVISED -
	PLOT DATE = 3/20/2012	DATE -	REVISED -

**STATE OF ILLINOIS
DEPARTMENT OF TRANSPORTATION**

SCHEDULE OF QUANTITIES

SCALE: NA SHEET 2 OF 3 SHEETS STA. TO STA.

F.A.I. RTE.	SECTION	COUNTY	TOTAL SHEETS	SHEET NO.
70	D7 HMA RESURF 2012-4	Fayette	21	8
CONTRACT NO. 74570			ILLINOIS FED. AID PROJECT	

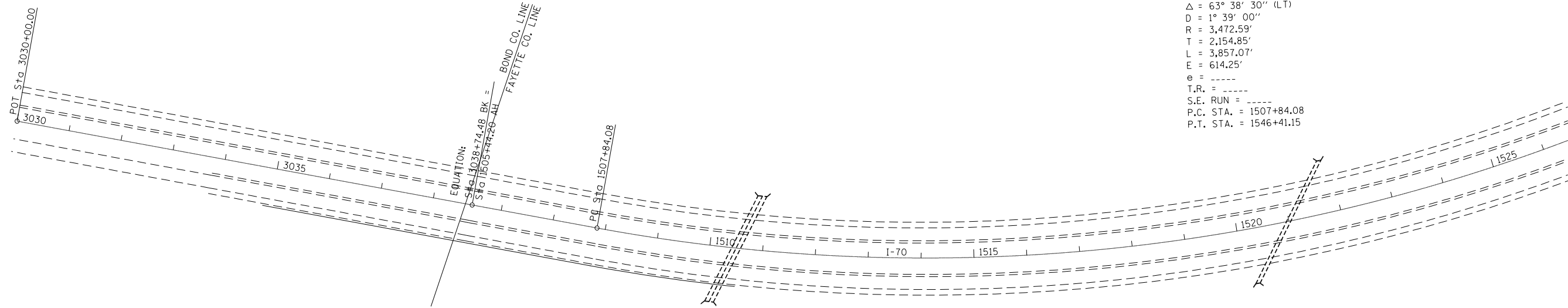
PATCHING SCHEDULE	CLASS A PATCHES, TYPE I, 8 INCH	CLASS A PATCHES, TYPE II, 8 INCH	CLASS A PATCHES, TYPE III, 8 INCH	CLASS A PATCHES, TYPE IV, 8 INCH	TIE BARS, 3/4"	PATCHING REINFORCEMENT	SAW CUTS
	SO YD	SO YD	SO YD	SO YD	EACH	SO YD	FOOT
STATION TO STATION							
EAST BOUND DRIVING LANE							
EASTBOUND DRIVING LANE RURAL TOTALS	4	70	0	0	0	74	572
EASTBOUND DRIVING LANE URBAN TOTALS	4	94	19	33.0	12	150	1022
WESTBOUND DRIVING LANE							
WESTBOUND DRIVING LANE URBAN TOTALS	0	131	0	0.0	0	131	1060
RURAL PROJECT TOTALS	4	70	0	0	0	74	572
URBAN PROJECT TOTALS	4	225	19	33	12	281	2082
PROJECT TOTALS	8	295	19	33	12	355	2654

FILE NAME =	USER NAME = steffenmk	DESIGNED -	REVISED -
ct:\pw\work\p\dot\steffenmk\d0298200\07	74570-sht-sch.dgn	DRAWN -	REVISED -
	PLOT SCALE = 100.0000' / in.	CHECKED -	REVISED -
	PLOT DATE = 3/20/2012	DATE -	REVISED -

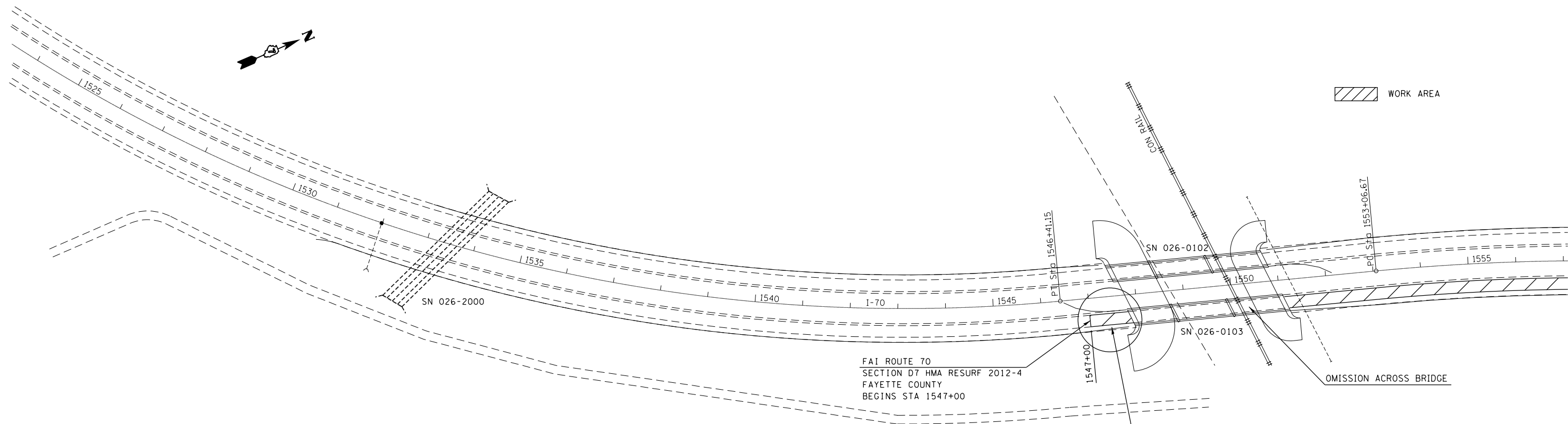
**STATE OF ILLINOIS
DEPARTMENT OF TRANSPORTATION**

SCHEDULE OF QUANTITIES			
SCALE: NA	SHEET 3	OF 3 SHEETS	STA. TO STA.

F.A.I. RTE.	SECTION	COUNTY	TOTAL SHEETS	SHEET NO.
70	D7 HMA RESURF 2012-4	Fayette	21	9
CONTRACT NO. 74570				
ILLINOIS FED. AID PROJECT				



NOT DRAWN TO SCALE



NOT DRAWN TO SCALE

FAI ROUTE 70
SECTION D7 HMA RESURF 2012-4
FAYETTE COUNTY
BEGINS STA 1547+00

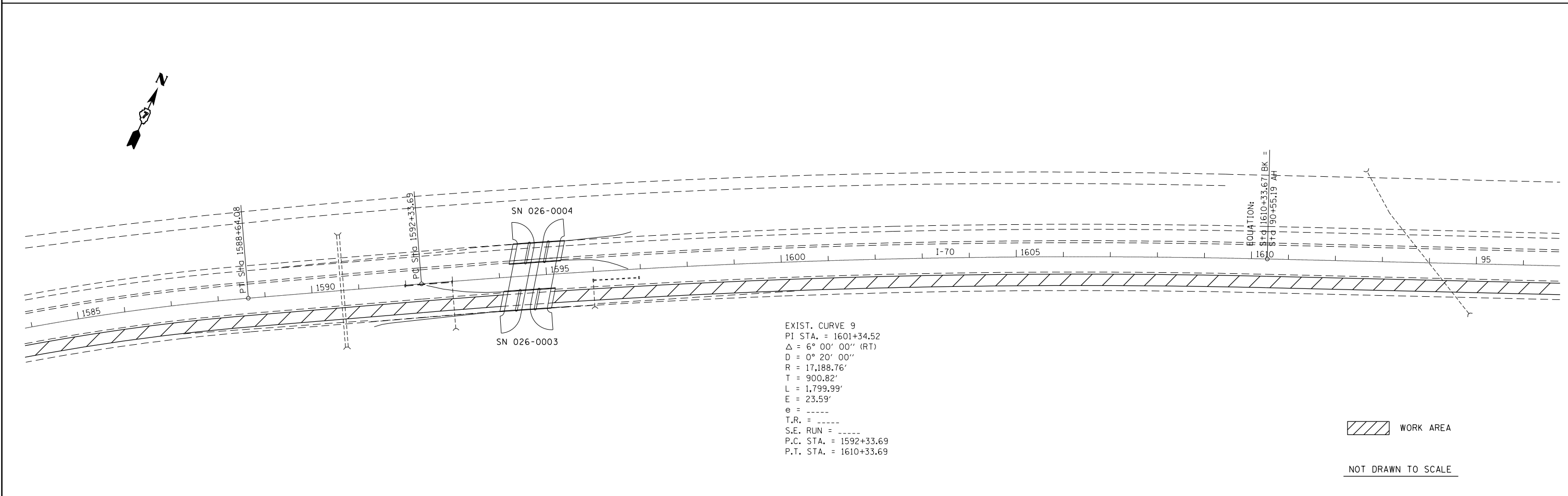
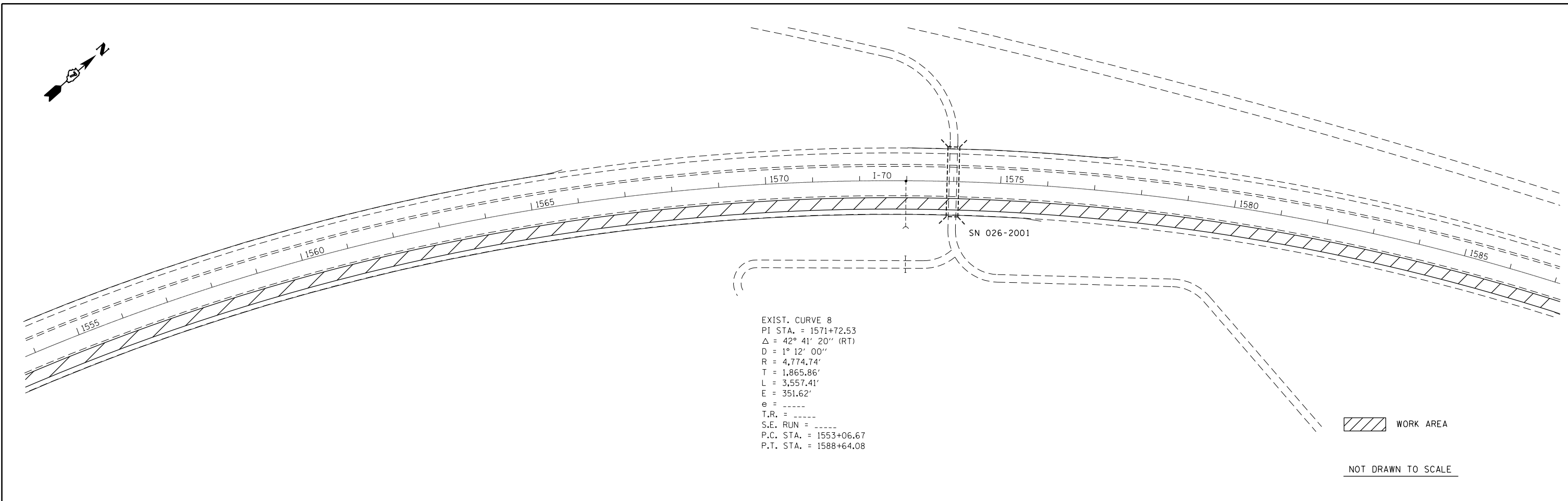
OMIT AREA OF LOOPS IN PAVEMENT
FOR WEATHER STATION

FILE NAME =	USER NAME = steffenmk	DESIGNED -	REVISED -
c:\pwork\pwork\stevfemk\d0298200\074570-sht-plan.dgn		DRAWN -	REVISED -
	PLOT SCALE = 200.0000' / in.	CHECKED -	REVISED -
	PLOT DATE = 3/20/2012	DATE -	REVISED -

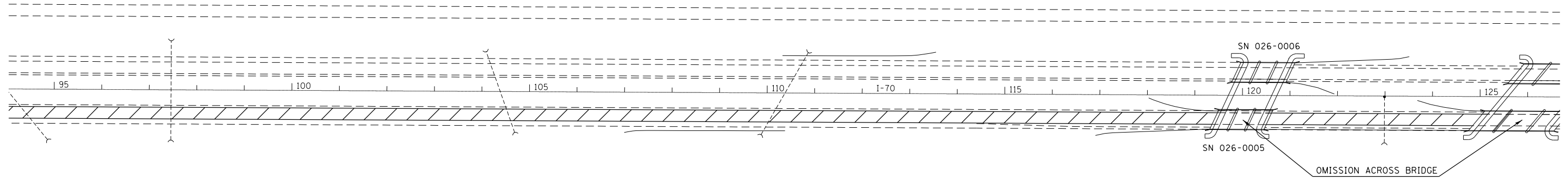
**STATE OF ILLINOIS
DEPARTMENT OF TRANSPORTATION**

PLAN	
SCALE: NA	SHEET NO. 1 OF 10 SHEETS
STA. 3033+80	TO STA. 1557+00

F.A.I. RTE.	SECTION	COUNTY	TOTAL SHEETS	SHEET NO.
70	D7 HMA RESURF 2012-4	Fayette	21	10
CONTRACT NO. 74570				
ILLINOIS FED. AID PROJECT				

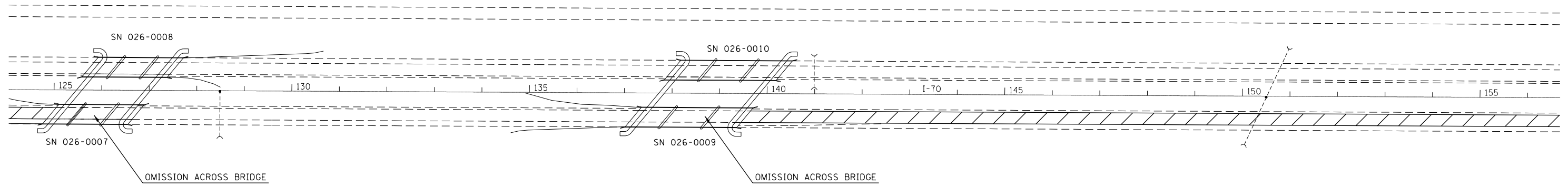


FILE NAME =	USER NAME = steffenmk	DESIGNED -	REVISED -	STATE OF ILLINOIS DEPARTMENT OF TRANSPORTATION	PLAN			F.A.I. R.E.	SECTION	COUNTY	TOTAL SHEETS	SHEET NO.
ci:\pw\work\p\midot\steffenmk\d0298200\0774570-sht-plan.dgn	PLOT SCALE = 200.0000' / in.	DRAWN -	REVISED -		SCALE: NA	SHEET NO. 2 OF 10 SHEETS	STA. 1554+00 TO STA. 96+00	70	D7 HMA RESURF 2012-4	Fayette	21	11
PLOT DATE = 3/20/2012	DATE -	CHECKED -	REVISED -		CONTRACT NO. 74570							
		DATE -	REVISED -		ILLINOIS FED. AID PROJECT							



WORK AREA

NOT DRAWN TO SCALE



WORK AREA

NOT DRAWN TO SCALE

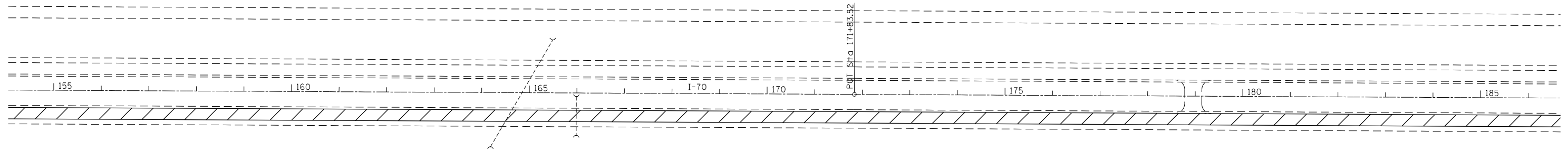
FILE NAME =	USER NAME = steffenmk	DESIGNED -	REVISED -
ei:\pw\work\pwidot\steffenmk\d0298200\074570-sht-plan.dgn		DRAWN -	REVISED -
	PLOT SCALE = 200.0000' / in.	CHECKED -	REVISED -
	PLOT DATE = 3/20/2012	DATE -	REVISED -


**STATE OF ILLINOIS
DEPARTMENT OF TRANSPORTATION**

PLAN

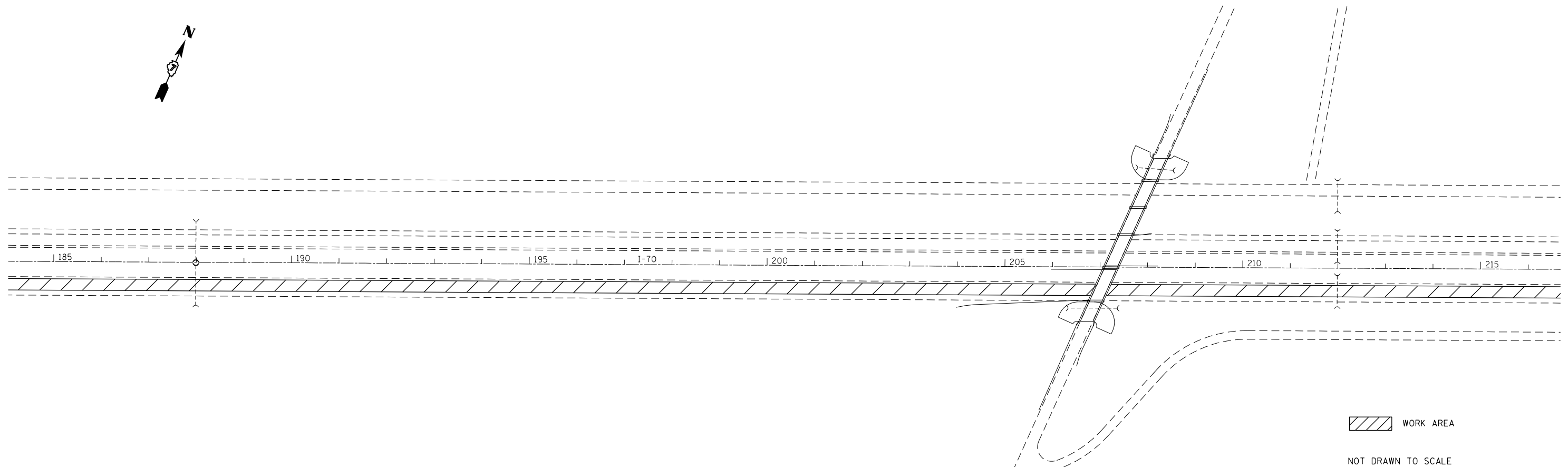
SCALE: NA SHEET NO. 3 OF 10 SHEETS STA. 95+00 TO STA. 156+00


F.A.I. RTE.	SECTION	COUNTY	TOTAL SHEETS	SHEET NO.
70	D7 HMA RESURF 2012-4	Fayette	21	12
ILLINOIS FED. AID PROJECT			CONTRACT NO. 74570	



 WORK AREA

NOT DRAWN TO SCALE



 WORK AREA

NOT DRAWN TO SCALE

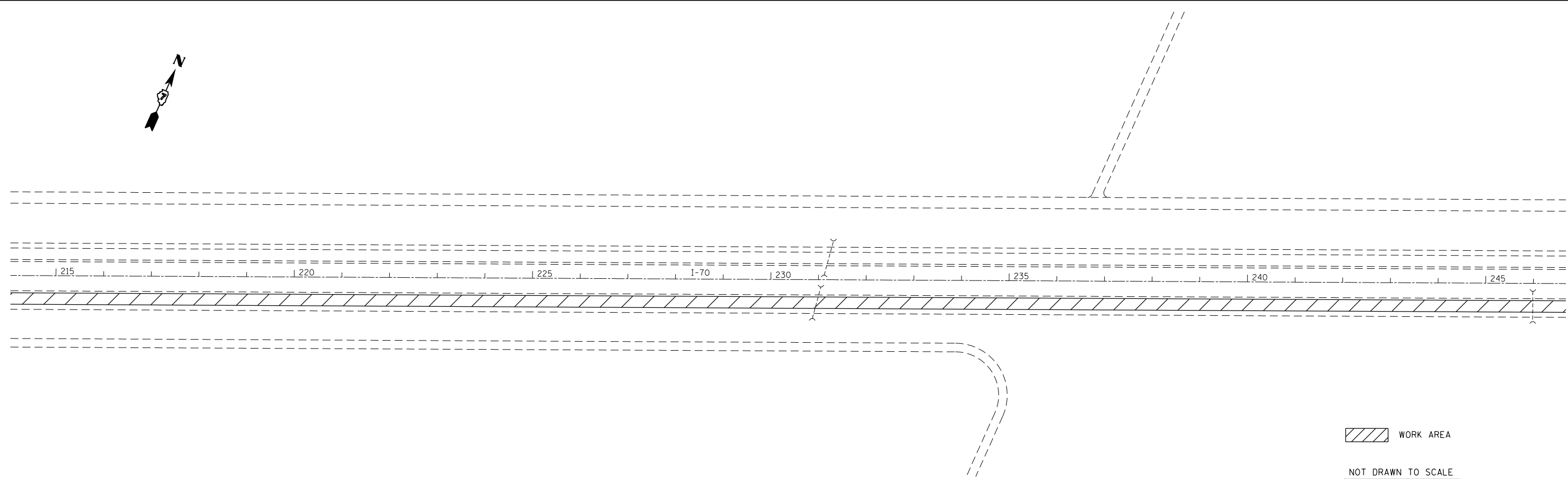
FILE NAME =	USER NAME = steffenmk	DESIGNED -	REVISED -
ei:\pw_work\p\dot\steffenmk\d0298200\074570-sht\plan.dgn		DRAWN -	REVISED -
	PLOT SCALE = 200.0000' / in.	CHECKED -	REVISED -
	PLOT DATE = 3/20/2012	DATE -	REVISED -

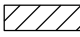
**STATE OF ILLINOIS
DEPARTMENT OF TRANSPORTATION**

PLAN

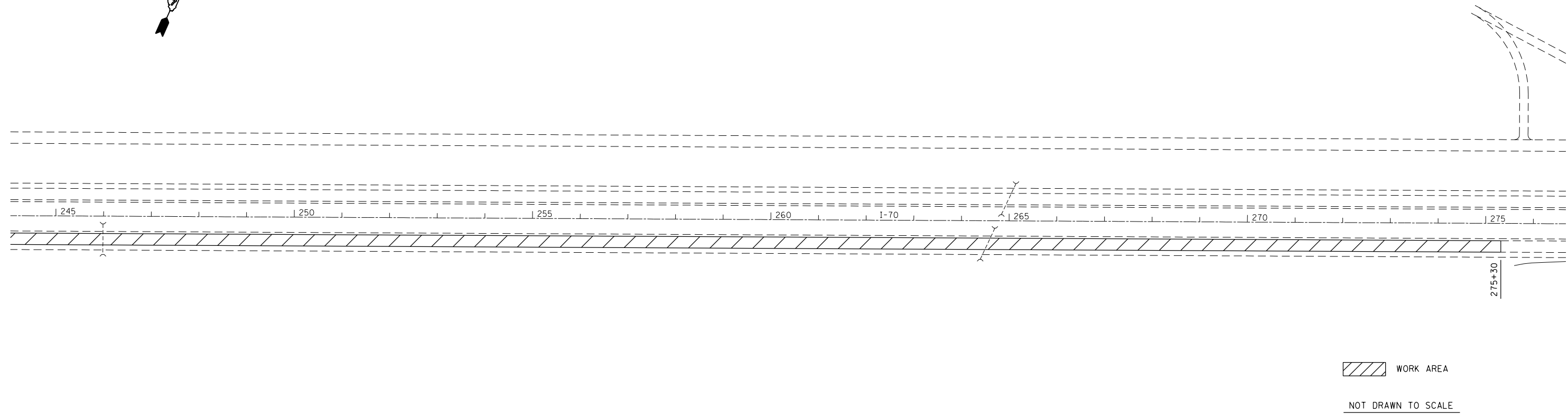
SCALE: NA SHEET NO. 4 OF 10 SHEETS STA. 155+00 TO STA. 216+00

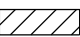
F.A.I. RTE.	SECTION	COUNTY	TOTAL SHEETS	SHEET NO.
70	D7 HMA RESURF 2012-4	Fayette	21	13
ILLINOIS FED. AID PROJECT			CONTRACT NO. 74570	



 WORK AREA

NOT DRAWN TO SCALE



 WORK AREA

NOT DRAWN TO SCALE

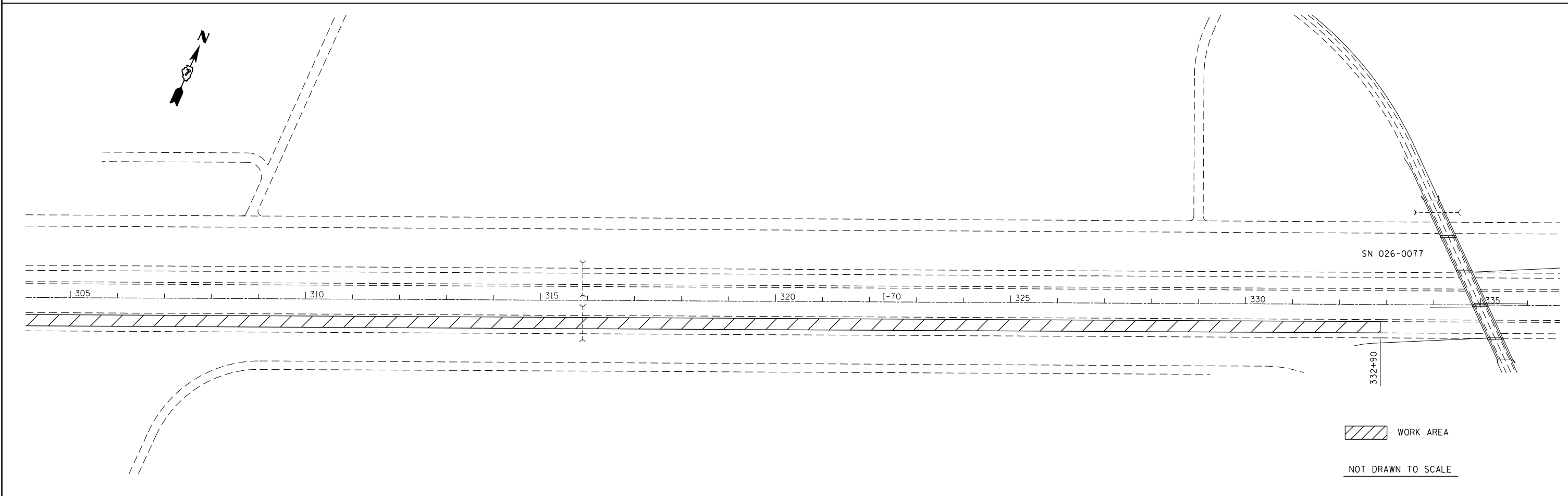
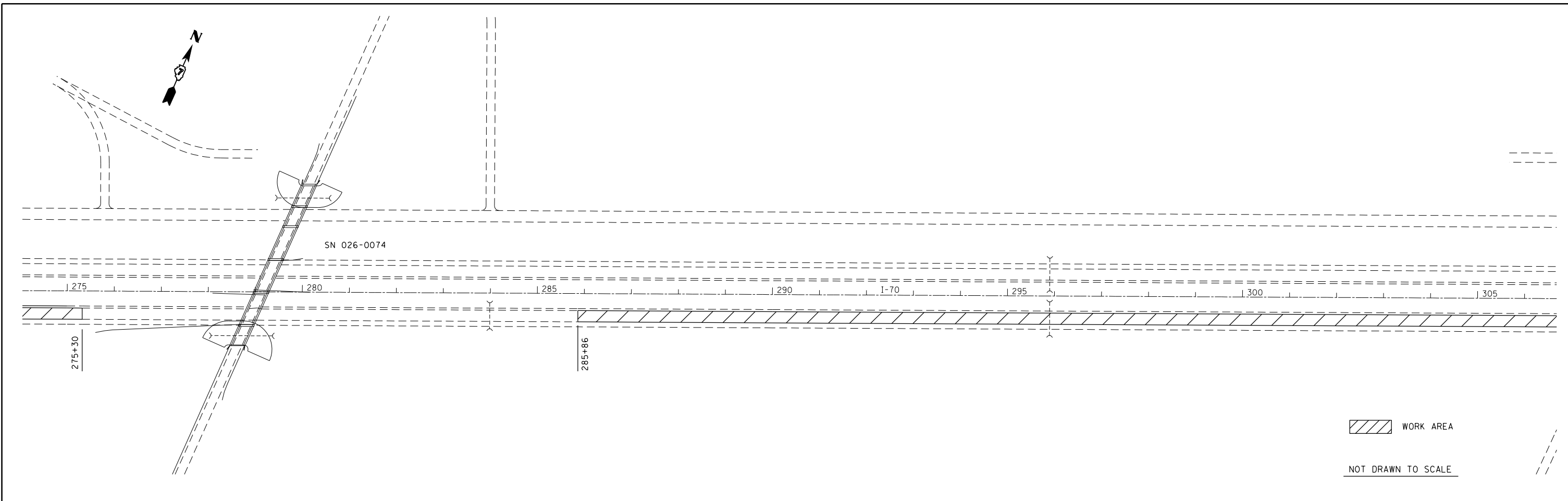
FILE NAME =	USER NAME = steffenmk	DESIGNED -	REVISED -
ei:\pw\work\pwidot\steffenmk\d0298200\0774570-sht.pln.dgn		DRAWN -	REVISED -
	PLOT SCALE = 200.0000' / in.	CHECKED -	REVISED -
	PLOT DATE = 3/20/2012	DATE -	REVISED -

**STATE OF ILLINOIS
DEPARTMENT OF TRANSPORTATION**

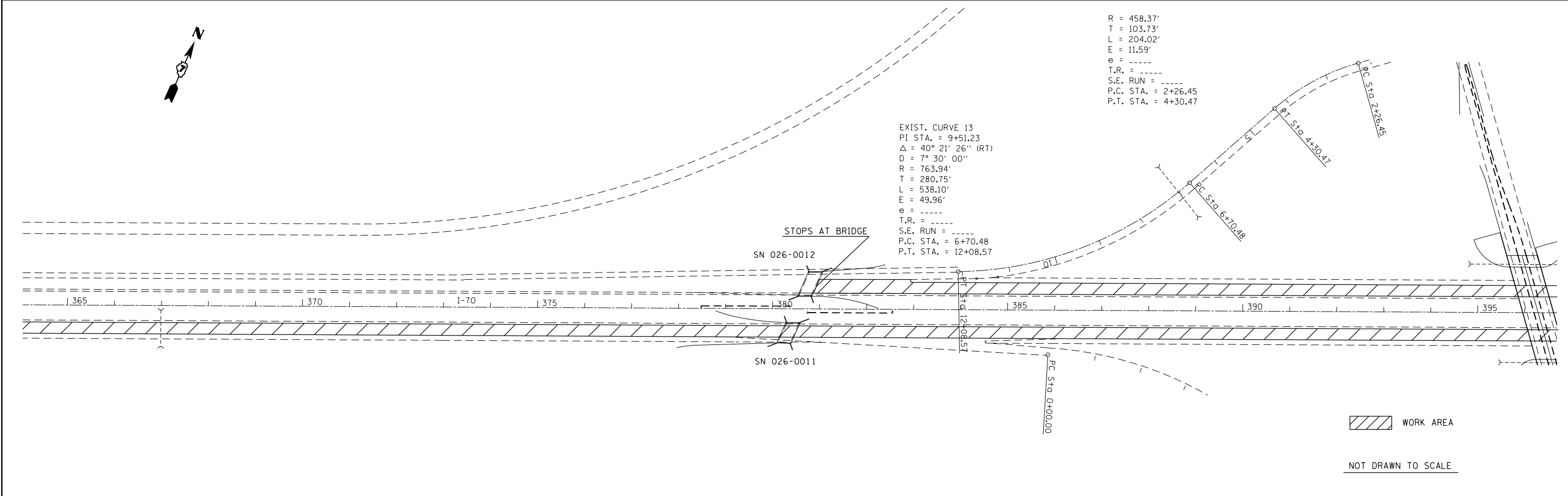
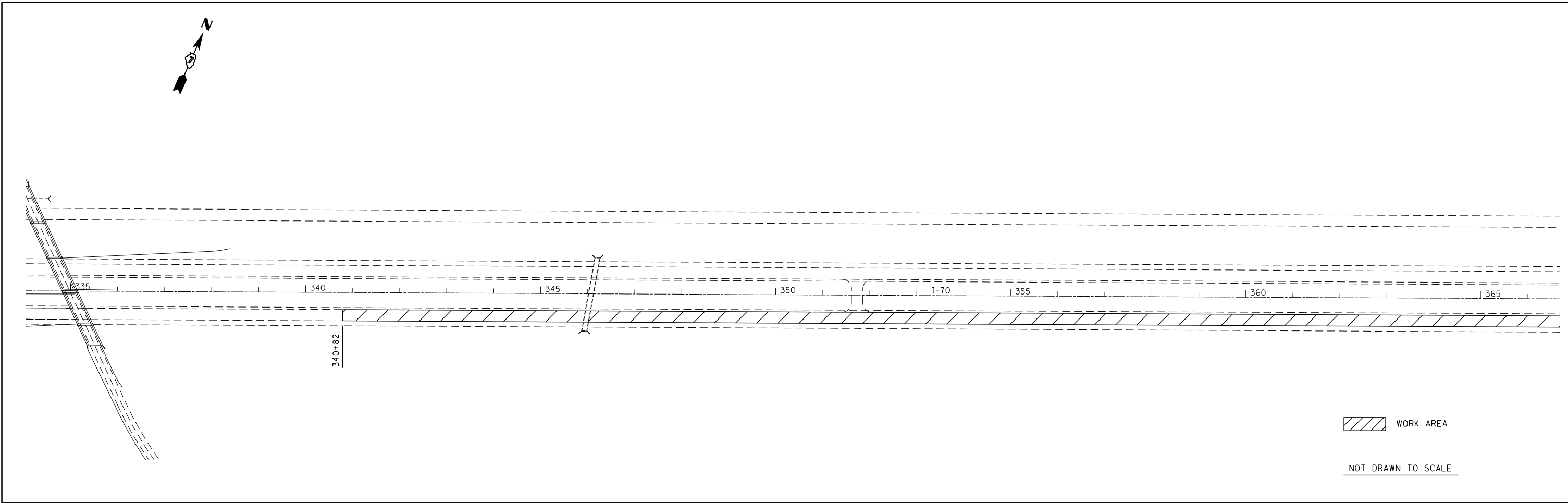
PLAN

SCALE: NA SHEET NO. 5 OF 10 SHEETS STA. 215+00 TO STA. 276+00

F.A.I. RTE.	SECTION	COUNTY	TOTAL SHEETS	SHEET NO.
70	D7 HMA RESURF 2012-4	Fayette	21	14
ILLINOIS FED. AID PROJECT			CONTRACT NO. 74570	



FILE NAME =	USER NAME = steffenmk	DESIGNED -	REVISED -	STATE OF ILLINOIS DEPARTMENT OF TRANSPORTATION	PLAN		F.A.I. RTE.	SECTION	COUNTY	TOTAL SHEETS	SHEET NO.	
ei:\pw\work\pwidot\steffenmk\d0298200\074570-sht\plan.dgn		DRAWN -	REVISED -		SCALE: NA	SHEET NO. 6 OF 10 SHEETS	STA. 275+00 TO STA. 336+00	70	D7 HMA RESURF 2012-4	Fayette	21	15
	PLOT SCALE = 200.0000' / in.	CHECKED -	REVISED -						CONTRACT NO. 74570			
	PLOT DATE = 3/20/2012	DATE -	REVISED -						ILLINOIS FED. AID PROJECT			



R = 458.37'
 T = 103.73'
 L = 204.02'
 E = 11.59'
 e = -----
 T.R. = -----
 S.E. RUN = -----
 P.C. STA. = 2+26.45
 P.T. STA. = 4+30.47

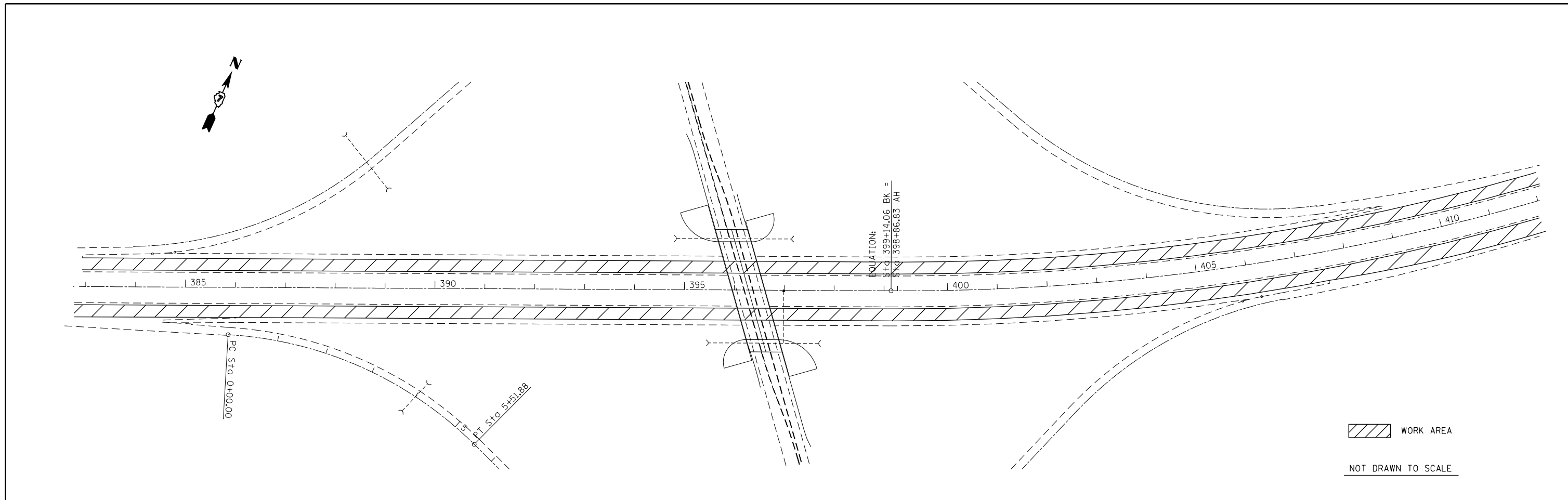
EXIST. CURVE 13
 PI STA. = 9+51.23
 $\Delta = 40^\circ 21' 26''$ (RT)
 D = $7^\circ 30' 00''$
 R = 763.94'
 T = 280.75'
 L = 538.10'
 E = 49.96'
 e = -----
 T.R. = -----
 S.E. RUN = -----
 P.C. STA. = 6+70.48
 P.T. STA. = 12+08.57

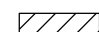
FILE NAME =	USER NAME = steffenmk	DESIGNED -	REVISED -
ei:\pw\work\pwidot\steffenmk\d0298200\074570-sht-plan.dgn		DRAWN -	REVISED -
	PLOT SCALE = 200.0000' / in.	CHECKED -	REVISED -
	PLOT DATE = 3/20/2012	DATE -	REVISED -

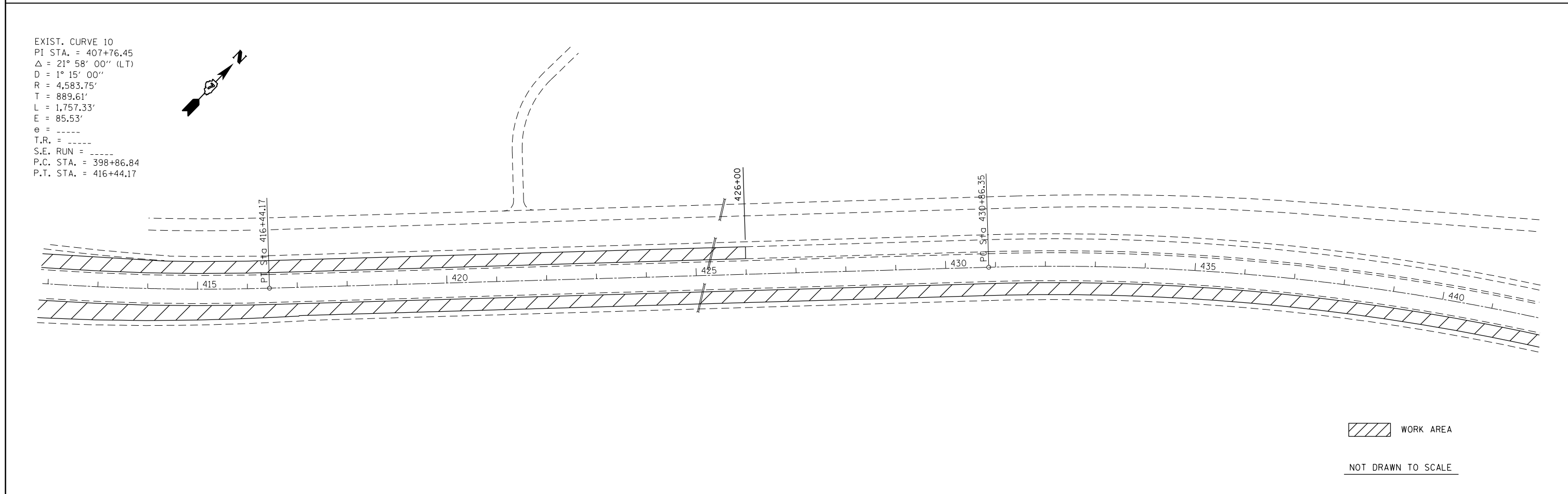
STATE OF ILLINOIS
DEPARTMENT OF TRANSPORTATION

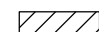
PLAN
 SCALE: NA SHEET NO. 7 OF 10 SHEETS STA. 335+00 TO STA. 396+00

F.A.I. RTE.	SECTION	COUNTY	TOTAL SHEETS	SHEET NO.
70	D7 HMA RESURF 2012-4	Fayette	21	16
CONTRACT NO. 74570				
ILLINOIS FED. AID PROJECT				



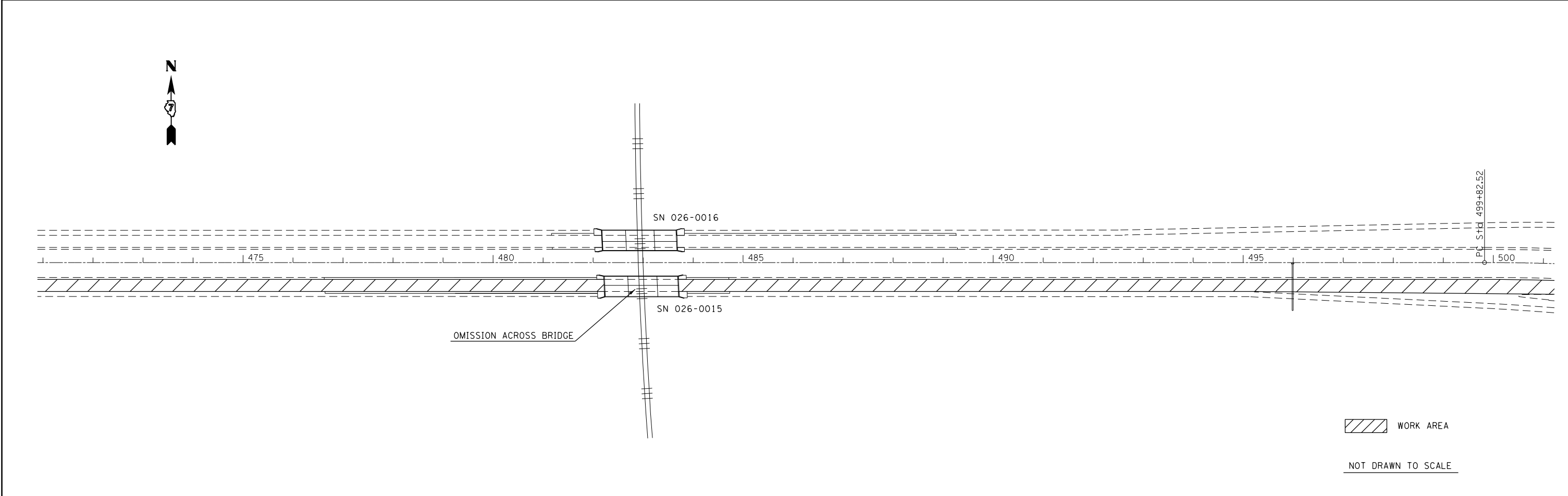
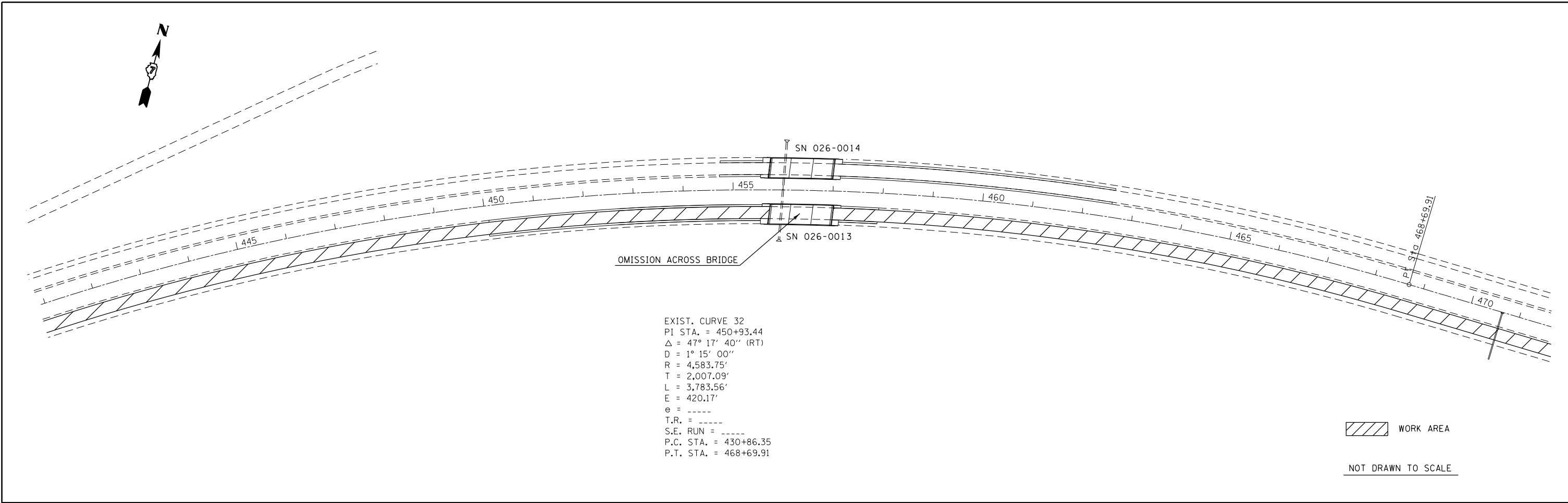
 WORK AREA
 NOT DRAWN TO SCALE



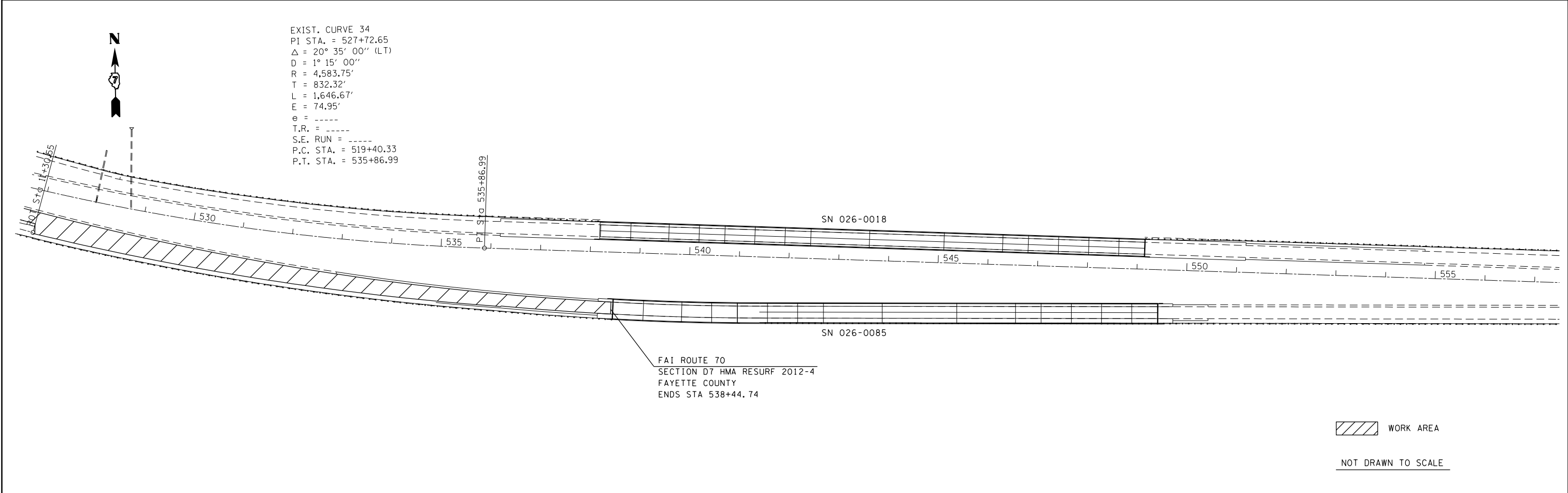
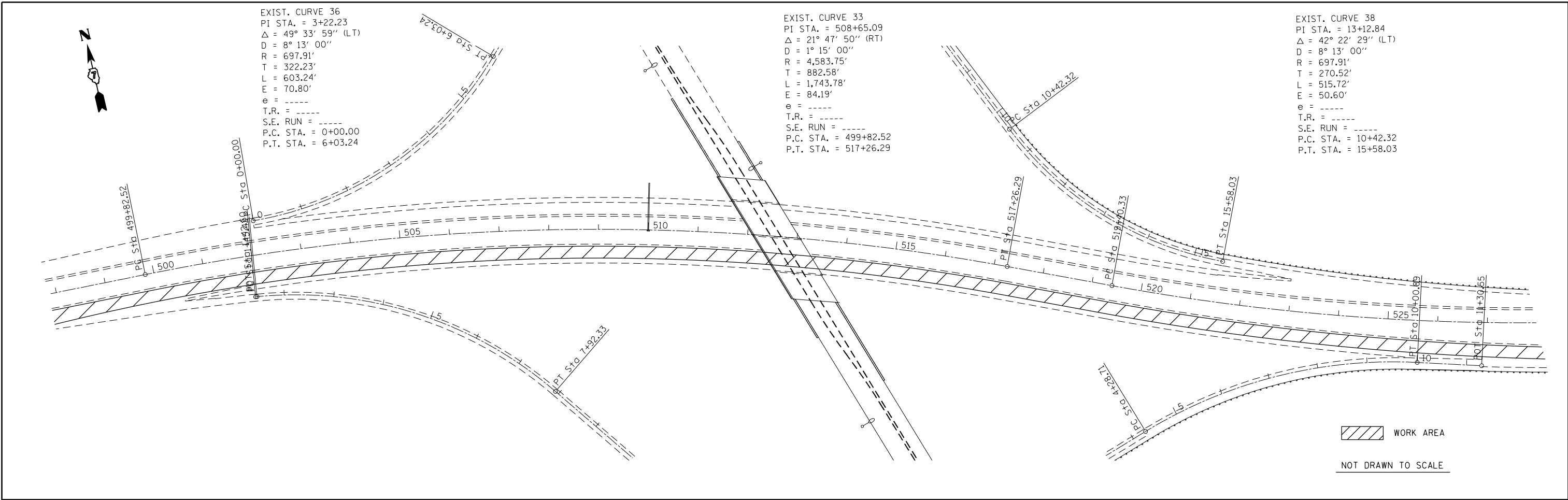
 WORK AREA
 NOT DRAWN TO SCALE

FILE NAME = c:\pw\work\p\dot\stef\enmk\d0298200\074570-sht-plan.dgn	USER NAME = stefenmk	DESIGNED -	REVISED -	STATE OF ILLINOIS DEPARTMENT OF TRANSPORTATION	PLAN	F.A.I. RTE.	SECTION	COUNTY	TOTAL SHEETS	SHEET NO.
	PLOT SCALE = 200.0000' / in.	CHECKED -	REVISED -			70	D7 HMA RESURF 2012-4	Fayette	21	17
PLOT DATE = 3/20/2012	DATE -	REVISED -	REVISED -	SCALE: NA	SHEET NO. 8 OF 10 SHEETS	STA. 383+00	TO STA. 441+00	ILLINOIS FED. AID PROJECT		

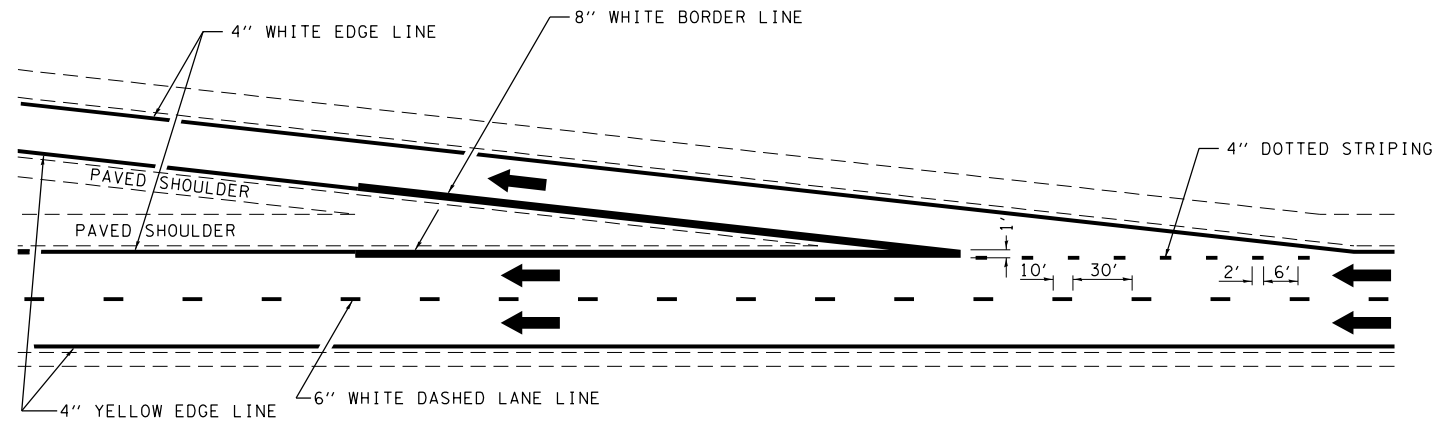
CONTRACT NO. 74570



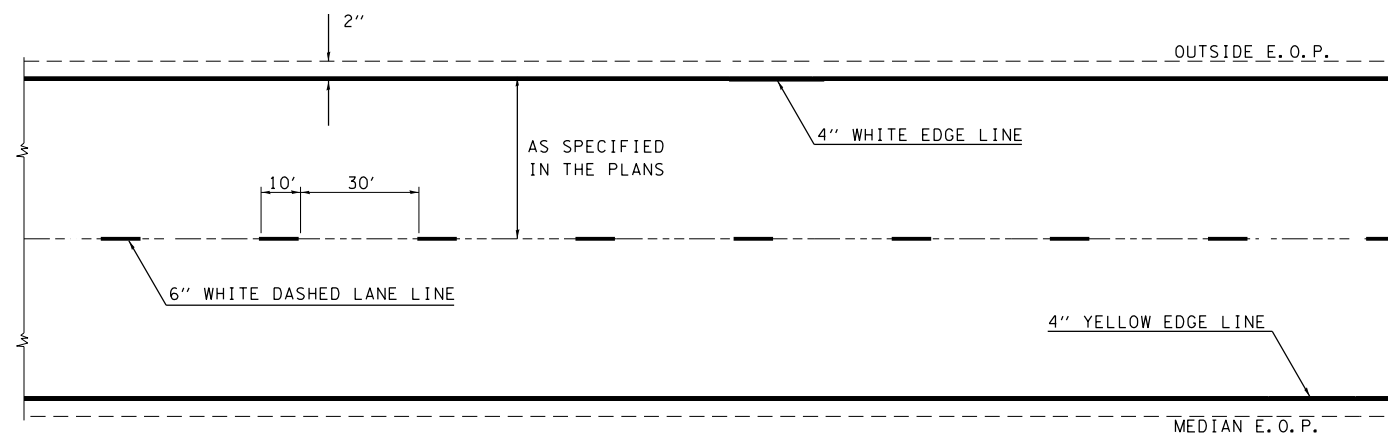
FILE NAME =	USER NAME = steffenmk	DESIGNED -	REVISED -	STATE OF ILLINOIS DEPARTMENT OF TRANSPORTATION	PLAN			F.A.I. RTE.	SECTION	COUNTY	TOTAL SHEETS	SHEET NO.
c:\pwwork\pwwork\steffenmk\d0298200\074570-sht-plan.dgn	74570-sht-plan.dgn	DRAWN -	REVISED -		70	D7 HMA RESURF 2012-4	Fayette	21	18			
PLOT SCALE = 200.0000' / in.	CHECKED -	REVISED -	REVISED -		CONTRACT NO. 74570							
PLOT DATE = 3/20/2012	DATE -	REVISED -	REVISED -		ILLINOIS FED. AID PROJECT							
				SCALE: NA	SHEET NO. 9 OF 10 SHEETS	STA. 441+00	TO STA. 501+00					



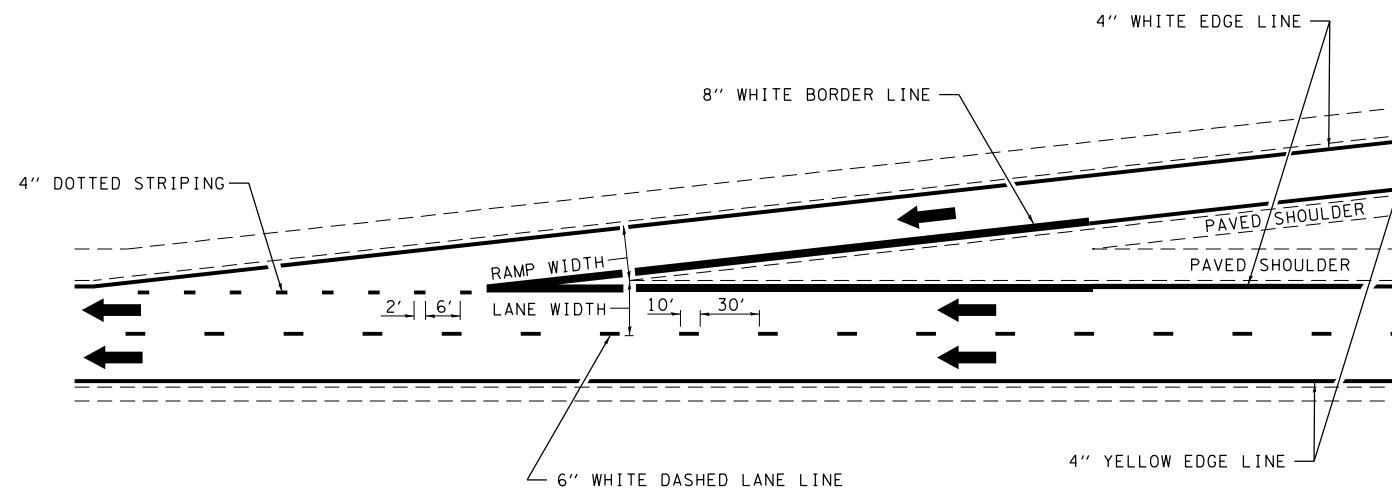
FILE NAME =	USER NAME = steffenmk	DESIGNED -	REVISED -	STATE OF ILLINOIS DEPARTMENT OF TRANSPORTATION	PLAN			F.A.I. RTE.	SECTION	COUNTY	TOTAL SHEETS	SHEET NO.
ei:\pw\work\p\idot\steffenmk\d0298200\074570-sht-plan.dgn		DRAWN -	REVISED -		70	D7 HMA RESURF 2012-4	Fayette	21	19			
PLOT SCALE = 200.0000' / in.		CHECKED -	REVISED -		CONTRACT NO. 74570							
PLOT DATE = 3/20/2012		DATE -	REVISED -		ILLINOIS FED. AID PROJECT							
				SCALE: NA	SHEET NO. 10 OF 10 SHEETS	STA. 498+00	TO STA. 557+00					



TYPICAL EXIT RAMP MARKING



TYPICAL CENTERLINE & EDGELINE MARKINGS



TYPICAL ENTRANCE RAMP MARKING

NOT TO SCALE

FILE NAME =	USER NAME = steffenmk	DESIGNED -	REVISED - DRM 08-04
ci:\pwork\pwork\stevfenmk\d0298200\074570-sht-details.dgn		DRAWN -	REVISED - MKS 04-08
	PLOT SCALE = 100.0000' / in.	CHECKED -	REVISED - DRM 01-09
	PLOT DATE = 3/20/2012	DATE -	REVISED - DRM 12-10

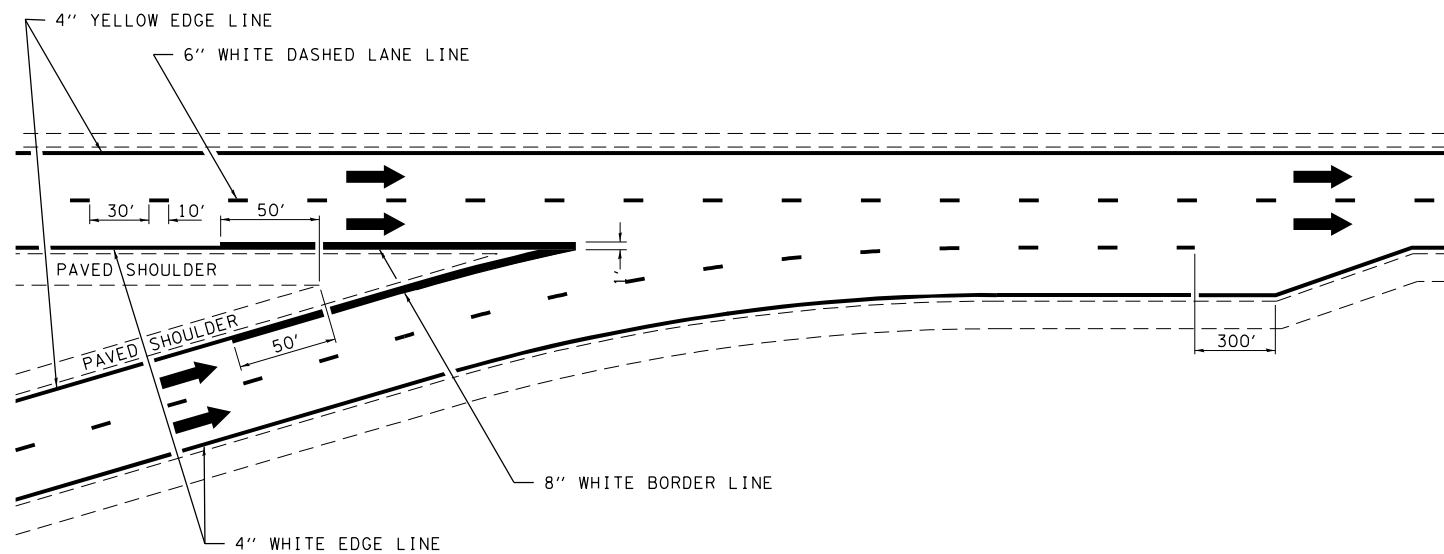
STATE OF ILLINOIS
DEPARTMENT OF TRANSPORTATION

TYPICAL APPLICATIONS OF INTERSTATE PAVEMENT MARKING

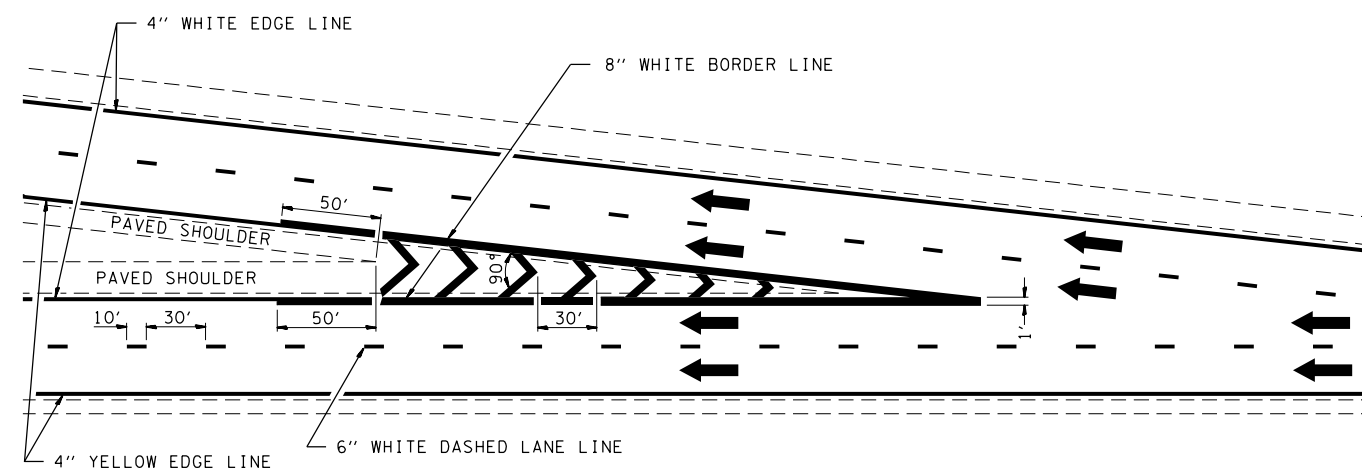
SCALE: NA SHEET NO. 1 OF 2 SHEETS STA. TO STA.

DISTRICT 7 DETAIL NO. 7800002

F.A.I. RTE.	SECTION	COUNTY	TOTAL SHEETS	SHEET NO.
70	D7 HMA RESURF 2012-4	FAYETTE	21	20
FED. ROAD DIST. NO. ILLINOIS FED. AID PROJECT			CONTRACT NO. 74570	

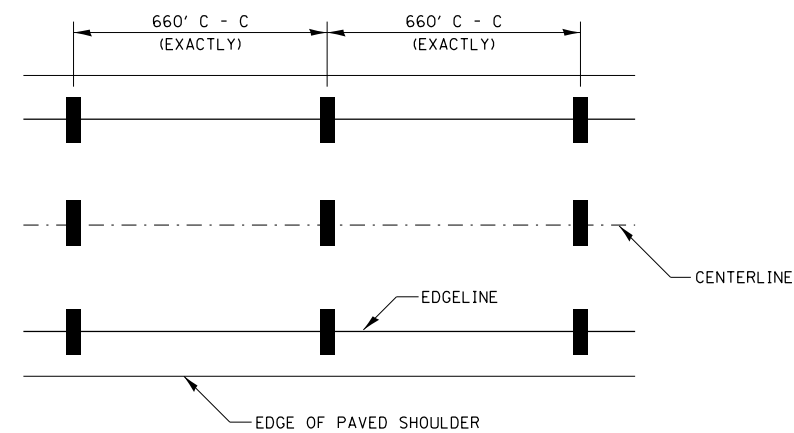


TYPICAL CONVERGENCE MARKING

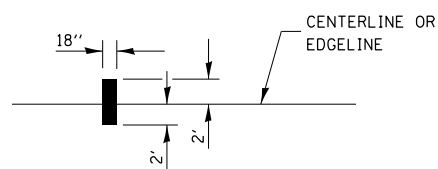


TYPICAL DIVERGENCE MARKING

AERIAL SPEED CHECK ZONES



IT WILL BE NECESSARY TO HAVE A REPRESENTATIVE OF THE STATE POLICE PRESENT SO THAT THE ACCURACY OF MEASUREMENT CAN BE ATTESTED TO IN COURT.



NOT TO SCALE

FILE NAME =	USER NAME = steffenmk	DESIGNED -	REVISED - MMO 12-99
ci:\pw\work\p\idot\steffenmk\d0298200\074570-sht-details.dgn	74570-sht-details.dgn	DRAWN -	REVISED - DRM 08-04
	PLOT SCALE = 100.0000' / 1in.	CHECKED -	REVISED - MKS 04-08
	PLOT DATE = 3/20/2012	DATE -	REVISED - DRM 01-09

STATE OF ILLINOIS
DEPARTMENT OF TRANSPORTATION

TYPICAL APPLICATIONS OF INTERSTATE PAVEMENT MARKING

SCALE: NA SHEET NO. 2 OF 2 SHEETS STA. TO STA.

DISTRICT 7 DETAIL NO. 7800002

F.A.I. RTE.	SECTION	COUNTY	TOTAL SHEETS	SHEET NO.
70	D7 HMA RESURF 2012-4	FAYETTE	21	21
				CONTRACT NO. 74570
FED. ROAD DIST. NO.		ILLINOIS FED. AID PROJECT		