

STATE OF ILLINOIS
DEPARTMENT OF TRANSPORTATION

F.A.U. RTE.	SECTION	COUNTY	TOTAL SHEETS	SHEET NO.
3578	2018-009-BP	COOK	27	1
		ILLINOIS	CONTRACT NO. 62G15	

FOR INDEX OF SHEETS, SEE SHEET NO. 2

IMPROVEMENT IS LOCATED IN THE VILLAGES OF PALOS HEIGHTS AND PALOS HILLS.

TRAFFIC DATA

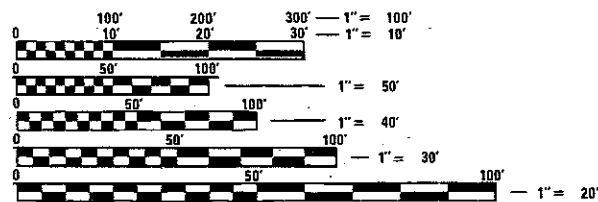
2017 ADT = 25,900
POSTED SPEED = 40 MPH

**PROPOSED
HIGHWAY PLANS**

**F.A.U. ROUTE 3578 – IL 7 (SOUTHWEST HIGHWAY)
OVER CAL-SAG CHANNEL 0.5 MI NE OF IL 83
SECTION: 2018-009-BP
PROJECT: STP-MW7B(995)
BRIDGE PAINTING
COOK COUNTY**

C-91-182-18

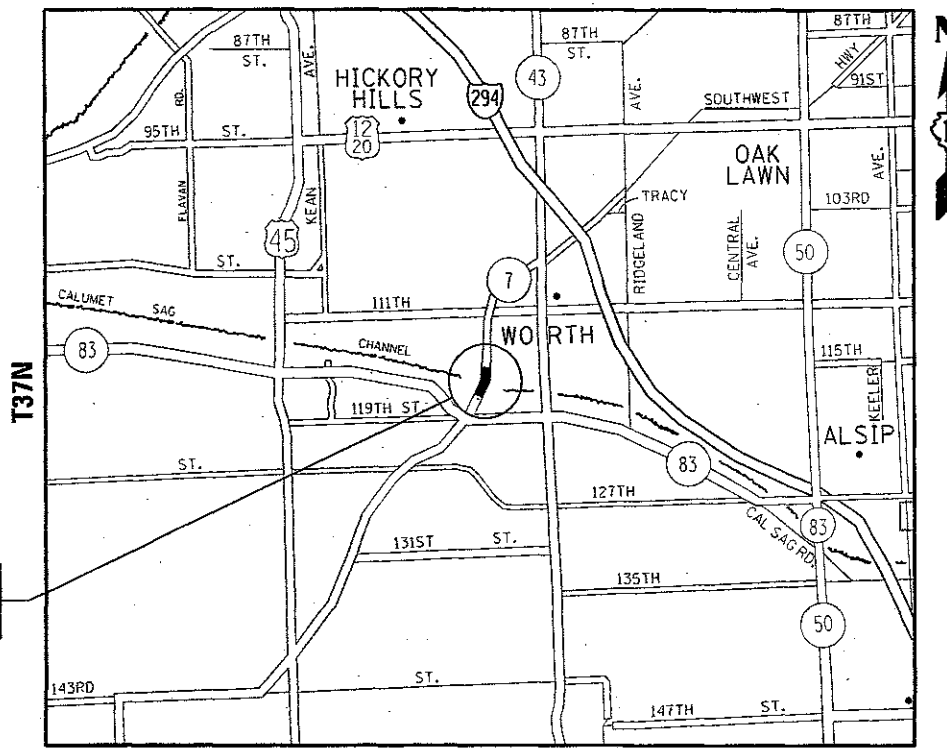
R 12 E



FULL SIZE PLANS HAVE BEEN PREPARED USING STANDARD ENGINEERING SCALES. REDUCED SIZED PLANS WILL NOT CONFORM TO STANDARD SCALES. IN MAKING MEASUREMENTS ON REDUCED PLANS, THE ABOVE SCALES MAY BE USED.

J.U.L.I.E.
JOINT UTILITY LOCATION INFORMATION FOR EXCAVATION
1-800-892-0123
OR 811

IMPROVEMENT LOCATION
SN 016-0464



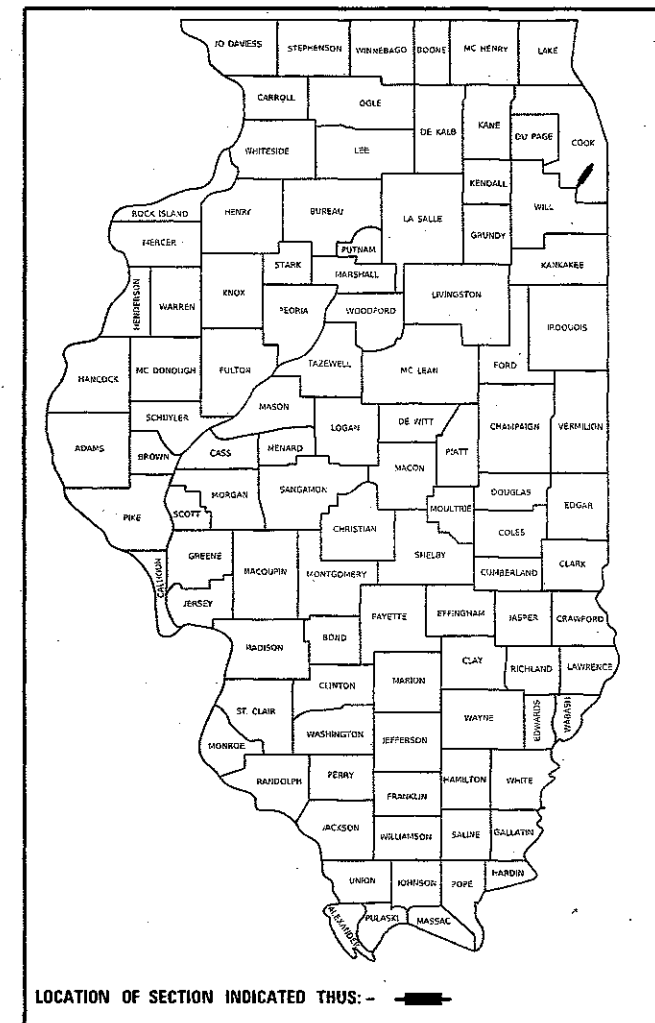
PALOS TOWNSHIP

GROSS & NET LENGTH = 346.0 FT. = 0.065 MILE

PROJECT ENGINEER J. ALAIN MIDY (847) 221-3056
PROJECT MANAGER FAWAD AQUEEL (847) 705-4247

CONTRACT NO. 62G15

D-91-284-18



LOCATION OF SECTION INDICATED THIS: -

STATE OF ILLINOIS
DEPARTMENT OF TRANSPORTATION

SUBMITTED May 8 2018
Anthony J. Quigley REGIONAL ENGINEER
June 29 2018
Scott A. Elk ENGINEER OF DESIGN AND ENVIRONMENT
June 29 2018
David P. [Signature] DIRECTOR OF HIGHWAYS PROJECT IMPLEMENTATION

PRINTED BY THE AUTHORITY
OF THE STATE OF ILLINOIS

INDEX OF SHEETS

SHEET NO.	DESCRIPTION
1	COVER SHEET
2	INDEX OF SHEETS, STANDARDS, AND GENERAL NOTES
3	SUMMARY OF QUANTITIES
4-14	STRUCTURE PLANS (SN 016-0464)
15-21	STAGING PLANS
22-23	FINAL PAVEMENT MARKING PLANS
24	RAISED REFLECTIVE PAVEMENT MARKERS (SNOW-PLOW RESISTANT) (TC-11)
25	DISTRICT ONE TYPICAL PAVEMENT MARKINGS (TC-13)
26	TRAFFIC CONTROL AND PROTECTION AT TURN BAYS (TO REMAIN OPEN TO TRAFFIC) (TC-14)
27	ARTERIAL ROAD INFORMATION SIGN (TC-22)

HIGHWAY STANDARDS

STANDARD NO.	DESCRIPTION
701427-05	LANE CLOSURE, MULTILANE, INTERMITTANT OR MOVING OPERATIONS, FOR SPEEDS ≤ 40 MPH
701606-10	URBAN LANE CLOSURE, MULTILANE, 2-W, WITH MOUNTABLE MEDIAN
701611-01	URBAN HALF ROAD CLOSURE, MULTILANE, 2W WITH MOUNTABLE MEDIAN
701701-10	URBAN LANE CLOSURE, MULTILANE INTERSECTION
701801-06	SIDEWALK, CORNER OR CROSSWALK CLOSURE
701901-07	TRAFFIC CONTROL DEVICES
704001-08	TEMPORARY CONCRETE BARRIER

GENERAL NOTES

BEFORE STARTING ANY EXCAVATION, THE CONTRACTOR SHALL CALL "J.U.L.I.E." AT (800) 892-0123 OR 811 FOR FIELD LOCATIONS OF BURIED ELECTRIC, TELEPHONE AND GAS UTILITIES. 48 HOUR NOTIFICATION IS REQUIRED.

THE CONTRACTOR SHALL COORDINATE CONSTRUCTION ACTIVITIES WITH UTILITY COMPANIES, AND THE VILLAGES OF PALOS HEIGHTS AND PALOS HILLS.

PLAN DIMENSIONS AND DETAILS RELATIVE TO EXISTING PLANS ARE SUBJECT TO NOMINAL CONSTRUCTION VARIATIONS. THE CONTRACTOR SHALL FIELD VERIFY EXISTING DIMENSIONS AND DETAILS AFFECTING NEW CONSTRUCTION AND MAKE NECESSARY APPROVED ADJUSTMENTS PRIOR TO CONSTRUCTION OR ORDERING OF MATERIALS. SUCH VARIATIONS SHALL NOT BE CAUSE FOR ADDITIONAL COMPENSATION FOR A CHANGE IN SCOPE OF THE WORK. HOWEVER, THE CONTRACTOR WILL BE PAID FOR THE QUANTITY ACTUALLY FURNISHED BASED AT THE UNIT PRICE BID FOR THE WORK.

THE CONTRACTOR WILL NOT BE ALLOWED TO SET UP A YARD OR FIELD OFFICE ON STATE PROPERTY WITHOUT WRITTEN PERMISSION FROM THE DEPARTMENT.

ALL DAMAGE TO EXISTING PAVEMENT MARKINGS OR RAISED REFLECTIVE PAVEMENT MARKERS OUTSIDE THE REMOVAL LINE SHOWN ON THE PLANS SHALL BE REPLACED AT NO ADDITIONAL COST TO THE DEPARTMENT.

THE CONTRACTOR SHALL CONTACT THE DISTRICT ONE TRAFFIC CONTROL SUPERVISOR AT (847)705-4470 A MINIMUM OF 72 HOURS IN ADVANCE OF BEGINNING WORK.

THE CONTRACTOR SHALL KEEP THE SIDEWALK OPEN DURING PAINTING OPERATION.

THE ENGINEER SHALL CONTACT PATRICE HARRIS, AREA TRAFFIC FIELD ENGINEER, AT (708)597-9800 A MINIMUM OF TWO (2) WEEKS PRIOR TO THE PLACEMENT OF PERMANENT PAVEMENT MARKINGS.

THESE PLANS HAVE BEEN PREPARED FROM NOTES RECEIVED FROM THE BUREAU OF MAINTENANCE BRIDGE INSPECTORS.

THE CONTRACTOR SHALL BE REQUIRED TO PROVIDE ACCESS TO ABUTTING PROPERTY AT ALL TIMES DURING THE CONSTRUCTION OF THIS PROJECT.

DO NOT SCALE PLANS FOR CONSTRUCTION DIMENSIONS.

THE CONTRACTOR SHALL OBTAIN COAST GUARD APPROVAL FOR ANY WORK THAT MAY INTERFERE WITH NAVIGATIONAL OPERATIONS OF THE NAVIGABLE WATERS. A WORK PLAN SHALL BE PREPARED BY THE CONTRACTOR, REVIEWED AND APPROVED BY THE ENGINEER AND BE SUBMITTED BY THE ENGINEER TO THE COAST GUARD AT THE ADDRESS LISTED BELOW FOR APPROVAL.

BRIDGE ADMINISTRATOR
US COAST GUARD
NINTH COAST GUARD DISTRICT
1240 E. NINTH ST
CLEVELAND, OH 44199-2060

GENERAL PAINT NOTES

CLEANING AND PAINTING OF THE EXISTING STRUCTURAL STEEL SHALL BE AS SPECIFIED IN THE SPECIAL PROVISION FOR "CLEANING AND PAINTING EXISTING STEEL STRUCTURES".

ALL EXISTING STEEL WITHIN SPAN 3 (SUCH AS, BUT NOT LIMITED TO: (TRUSS MEMBERS, FLOOR BEAMS, STRINGERS, LATERAL BRACING, BEARINGS), AND AS NOTED ON THE PLANS, SHALL BE CLEANED PER NEAR WHITE BLAST CLEANING - SSPC-SP10 AND SHALL BE PAINTED ACCORDING TO THE REQUIREMENTS OF PAINT SYSTEM 1-OZ/E/U. THE COLOR OF THE FINAL FINISH COAT FOR ALL INTERIOR STEEL SURFACES SHALL BE GRAY, MUNSELL NO 5B 7/1. THE COLOR OF THE FINAL FINISH COAT FOR TRUSS MEMBERS SHALL BE BLUE, MUNSELL NO 10B 3/6.

THE CONTRACTOR SHALL SUBMIT CALCULATIONS AND DETAILS DEMONSTRATING THE STRUCTURAL INTEGRITY OF THE BRIDGE IS MAINTAINED UNDER THE ADDITIONAL IMPOSED LOADS OF THE CONTAINMENT SYSTEM. SEE SPECIAL PROVISIONS.

A MINIMUM OF TWO (2) AIR MONITORS WILL BE REQUIRED TO MONITOR ABRASIVE BLASTING OPERATIONS AT THIS SITE. SEE SPECIAL PROVISION FOR "CONTAINMENT AND DISPOSAL OF LEAD PAINT CLEANING RESIDUES."

ALL ITEMS (SUCH AS, BUT NOT LIMITED TO: (TRUSS MEMBERS, FLOOR BEAMS, STRINGERS, LATERAL BRACING, BEARINGS) SHOULD BE CLEANED AND PAINTED.

AT PIERS 2 & 3, ALL BEAMS, BEARINGS AND OTHER STRUCTURAL STEEL WITHIN 5 FEET (MEASURED ALONG THE BEAM) OF EITHER SIDE OF DECK JOINTS, SHALL BE CLEANED PER NEAR WHITE BLAST CLEANING SSPC-SP10. THE COLOR OF THE FINAL COAT SHALL BE GRAY, MUNSELL NO 5B 7/1.

MDPIT: D:\pav\... FILE NAME: 041118\4848\DOT\FEG... \Projects\Design\CADD\work\design\2018\18016\041118\041118\DOT\Documents\DOT - Offices\District 1\Projects\Design\CADD\work\design\2018\18016\041118\041118\DOT\Documents\DOT - Offices\p1n.dgn

USER NAME = pyrzanoskib	DESIGNED -	REVISED -
	DRAWN -	REVISED -
PLOT SCALE = 100,0000' / in.	CHECKED -	REVISED -
PLOT DATE = 5/11/2018	DATE -	REVISED -

**STATE OF ILLINOIS
DEPARTMENT OF TRANSPORTATION**

INDEX OF SHEETS, STATE STANDARDS AND GENERAL NOTES			
SCALE:	SHEET	OF	SHEETS

F.A.H. RTE. 3578	SECTION 2018-009-BP	COUNTY COOK	TOTAL SHEETS 27	SHEET NO. 2
				CONTRACT NO. 62G15
				ILLINOIS FED. AID PROJECT

FOR INFORMATION ONLY

BENCH MARK No. 2, ELEV. 183.946:

"x" on Flange Bolt of Fire Hydrant, Sta. 1+135, 12.7m Lt.

EXISTING STRUCTURE: NO. 016-0464

The Structure was built in 1931. It was reconstructed in 1971 and further structural repairs were made in 1982 and 1998. The North 2.5m section of steel beneath the deck in exist. Span 3 was painted as part of the 1998 repairs. The last painting of the entire structure was recorded in July of 1984.

The existing Bridge carries five spans. The Approach Spans (No's 5, 4, 2 & 1) consist of Precast Channel Beams 1.14m wide and 533mm deep with a 44mm Bituminous Wearing Surface. The Center Span (No. 3) is composed of a Parker Steel Truss comprised of both Roll Formed and Built-Up Sections. This Superstructure supports a 190mm Cast-In-Place Reinforced Concrete Deck Slab with no Overlay.

Both Abutments and all four Piers are supported by Timber Piles. The Abutments are full-height or "closed" type. Piers 1 and 4 are column Bent with Cast-In-Place Cap Beams. Piers 2 and 3 are Column Piers and have a Conventionally Reinforced Strut and a Post-Tensioned Cap Beam to support the Channel Beams of Spans 2 and 4.

The overall length of the Structure measured in the field (Surveyed) 105.605m from back of Abutment to back of Abutment. The Out to Out deck width measures approximately 18.44m. Clear Roadway width provides a 3.28m Outside Lane and a 3.35m Inside Lane in each direction. Safety Walks on both the East and West sides of the Bridge measures approximately 1.83m.

Stage Construction will be utilized to maintain passenger vehicle traffic. Truck traffic will be detoured.

All dimensions are in millimeters (mm) except as noted.

No Salvage.

*Dimensions taken from Field Survey.

DESIGN SPECIFICATIONS

AASHTO 1996 with 1997 thru 1999 Interims

LOADING MS18

DESIGN STRESSES

FIELD UNITS

NEW CONSTRUCTION

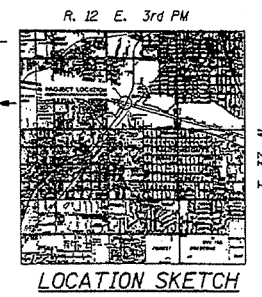
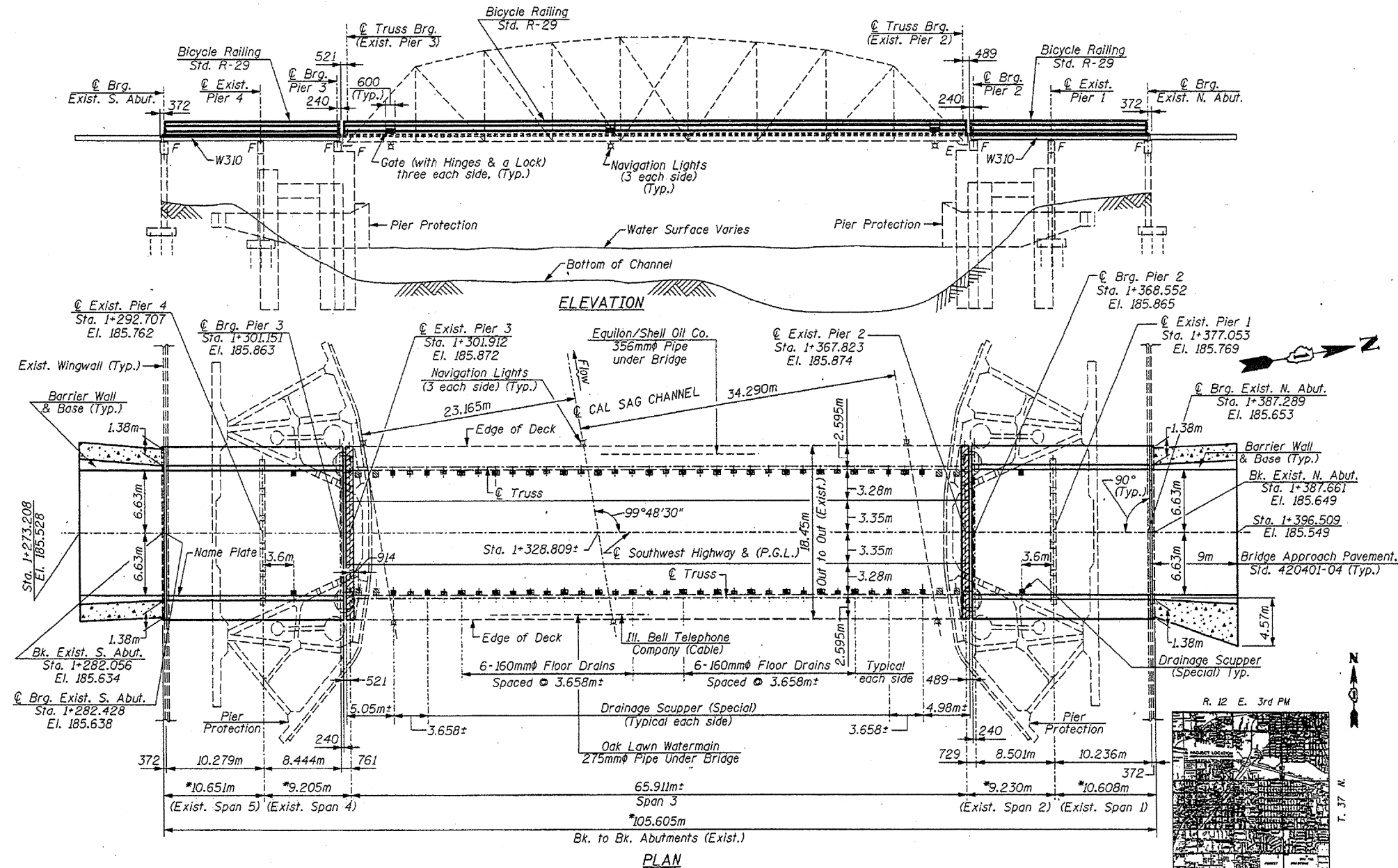
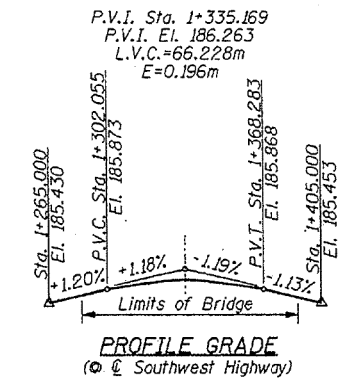
$f'_c = 24 \text{ MPa}$
 $f_y = 400 \text{ MPa}$ (Reinforcement)
 $f_y = 345 \text{ MPa}$ (Approach Spans)
 $f_y = 250 \text{ MPa}$ (Truss Members)

EXISTING CONSTRUCTION

$f_s = 125 \text{ MPa}$ (Truss)
 $f_s = 138 \text{ MPa}$ (Rehab. Truss Members)

SEISMIC DATA

Seismic Performance Category (SPC) = A
 Bedrock Acceleration Coefficient (A) = 0.038g
 Site Coefficient (S) = 1.0



MODEL: Default
 FILE: \\mspc01\p01\B&E\BID\NTEC\Illinois.gov\PW\DOT\Documents\BIDD\Office\BIDD\1\Projects\B&E\Illinois\016-0464\016-0464.dwg
 PROJECT: B&E\BID\NTEC\Illinois.gov\PW\DOT\Documents\BIDD\Office\BIDD\1\Projects\B&E\Illinois\016-0464\016-0464.dwg

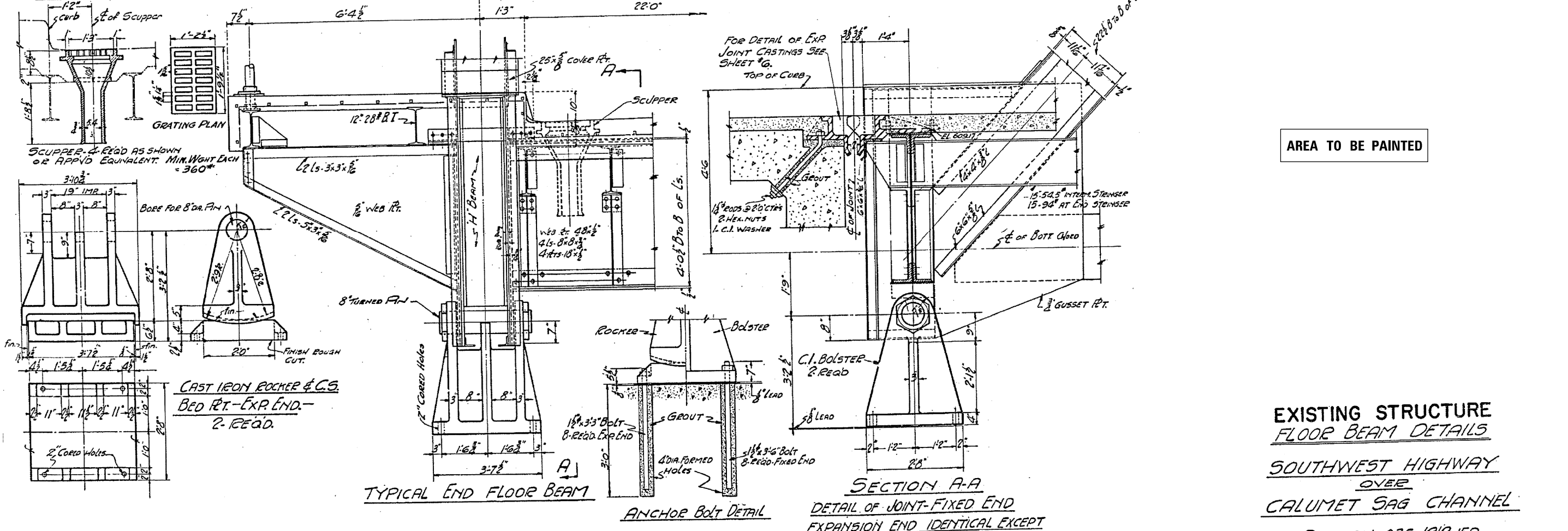
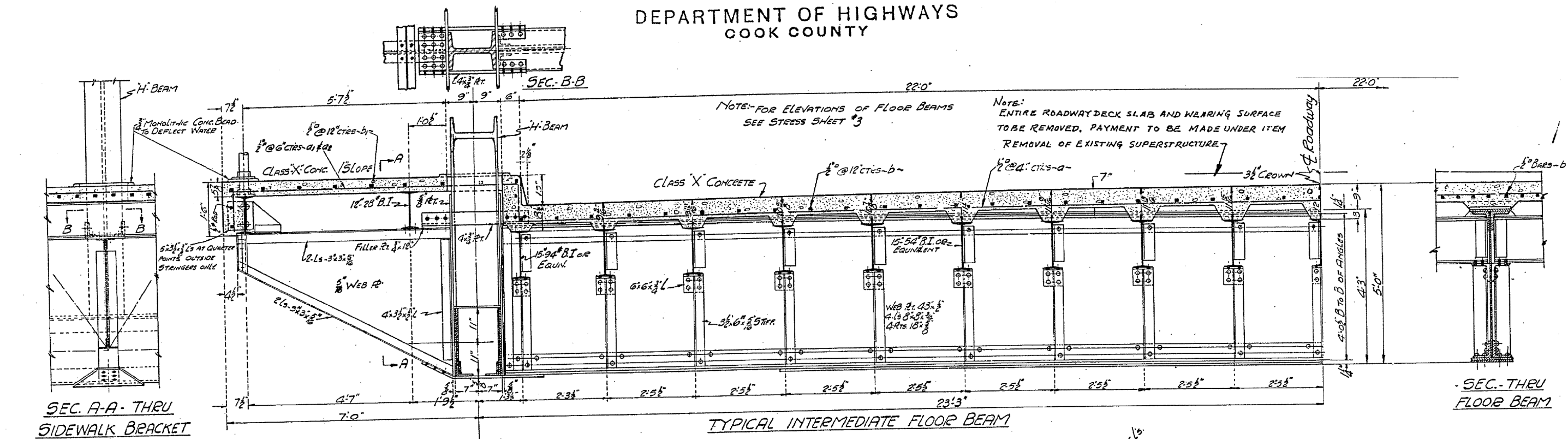
USER NAME = pyranowski	DESIGNED -	REVISED -
DRAWN -	REVISED -	REVISED -
PLOT SCALE = 100,0000' / in.	CHECKED -	REVISED -
PLOT DATE = 5/11/2018	DATE -	REVISED -

**STATE OF ILLINOIS
 DEPARTMENT OF TRANSPORTATION**

**GENERAL PLAN AND ELEVATION (SN 016-0464)
 IL RTE. 7 (SOUTHWEST HIGHWAY) OVER CAL SAG CHANNEL**

F.A.U. RTE. 3578	SECTION 2018-009-BP	COUNTY COOK	TOTAL SHEETS 27	SHEET NO. 4
SCALE: SHEET OF SHEETS STA. TO STA.			CONTRACT NO. 62G15	
ILLINOIS FED. AID PROJECT				

DEPARTMENT OF HIGHWAYS
COOK COUNTY



"EXISTING STRUCTURE INFORMATION ONLY"

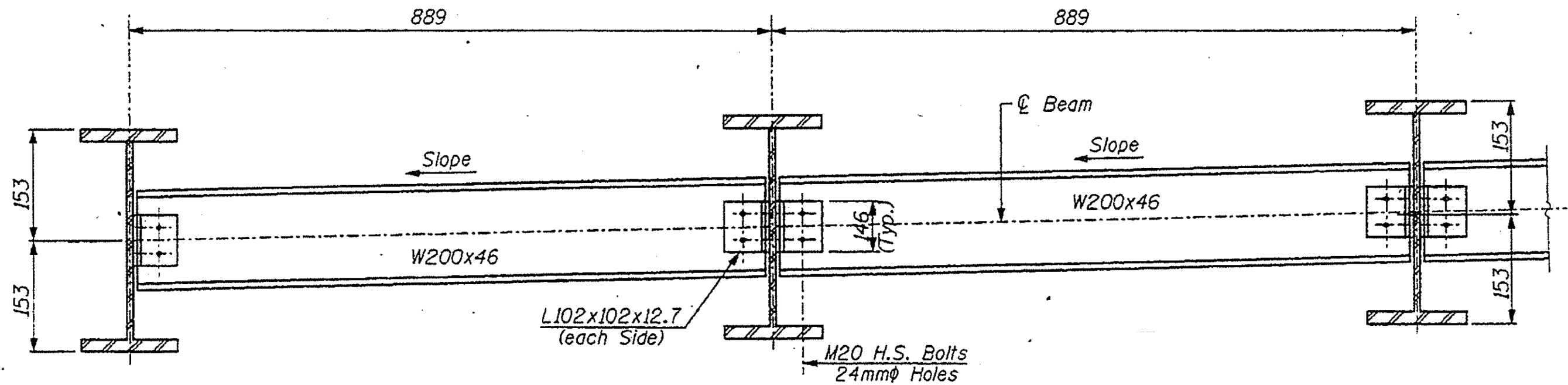
MODEL: Default
FILE: \\paulbaeb@rednet.ec.milwaukee.gov\paulbaeb\DOT\Documents\DOT Office\Drawings\1\Projects\Design\CADD\Drawings\2018\01546464\CAD\Drawings\1\1546464.dwg

USER NAME = pyranowski	DESIGNED -	REVISED -
PLOT SCALE = 100,0000' / in.	DRAWN -	REVISED -
PLOT DATE = 5/11/2018	CHECKED -	REVISED -
	DATE -	REVISED -

STATE OF ILLINOIS
DEPARTMENT OF TRANSPORTATION

STRUCTURAL STEEL DETAILS (SN 016-0464)
IL RTE. 7 (SOUTHWEST HIGHWAY) (OVER CAL SAG CHANNEL)

F.A.U. RTE. 3578	SECTION 2018-009-BP	COUNTY COOK	TOTAL SHEETS 27	SHEET NO. 7
SCALE: SHEET OF SHEETS STA. TO STA.			CONTRACT NO. 62G15	
ILLINOIS FED. AID PROJECT				



INTERIOR DIAPHRAGM D
AND END DIAPHRAGM D
 ○ C BRGS. PIER 3 & 2
 (152 Required)

AREA TO BE PAINTED

MODEL: Default
 FILE: \\nas01\p01\B08AEBID\NTEC\Illinois.gov\PIV\DOT\Documents\DOT_Offices\DI\Irtet 1\Projects\Design\CADD\B08AEBID\Design\2018\0154\0464\CADD\B08AEBID\B08AEBID.dgn

USER NAME = pyzranowski	DESIGNED -	REVISED -
	DRAWN -	REVISED -
PLOT SCALE = 100,0000' / in.	CHECKED -	REVISED -
PLOT DATE = 5/11/2018	DATE -	REVISED -

STATE OF ILLINOIS
DEPARTMENT OF TRANSPORTATION

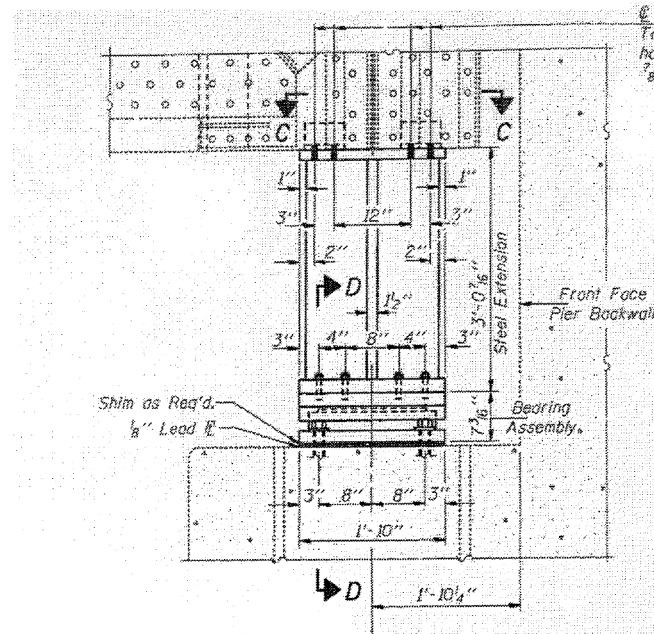
STRUCTURAL STEEL DETAILS (SN 016-0464)
IL RTE. 7 (SOUTHWEST HIGHWAY) (OVER CAL SAG CHANNEL)

SCALE: SHEET OF SHEETS STA. TO STA.

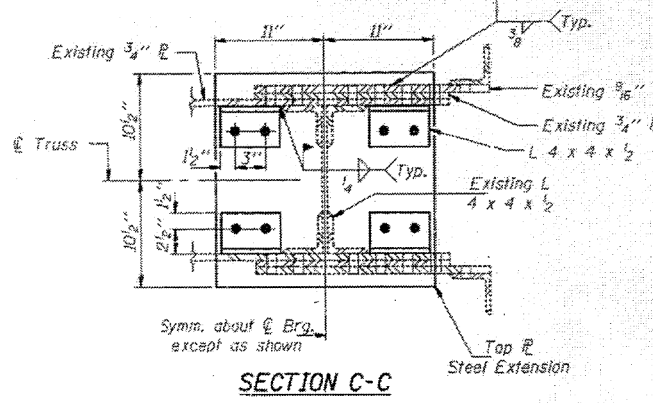
F.A.U. RTE.	SECTION	COUNTY	TOTAL SHEETS	SHEET NO.
3578	2018-009-BP	COOK	27	9
CONTRACT NO. 62G15				
ILLINOIS FED. AID PROJECT				

STATE OF ILLINOIS
DEPARTMENT OF TRANSPORTATION

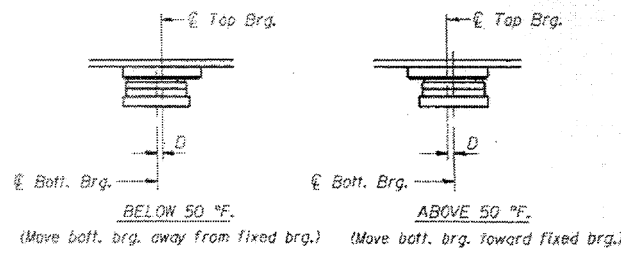
AREA TO BE PAINTED



ELEVATION AT PIER 2
EXPANSION FLOATING BEARING

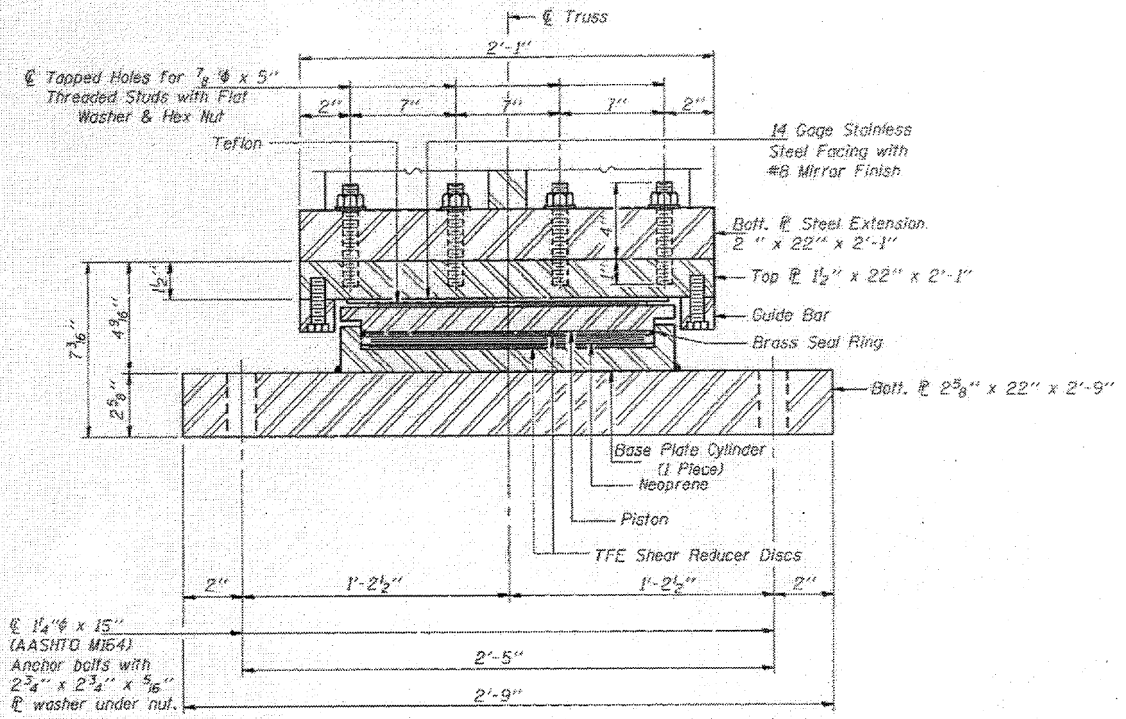


SECTION C-C

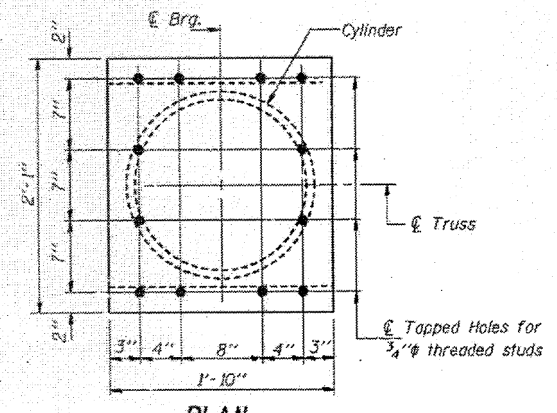


SETTING ANCHOR BOLTS AT EXP. BRG.

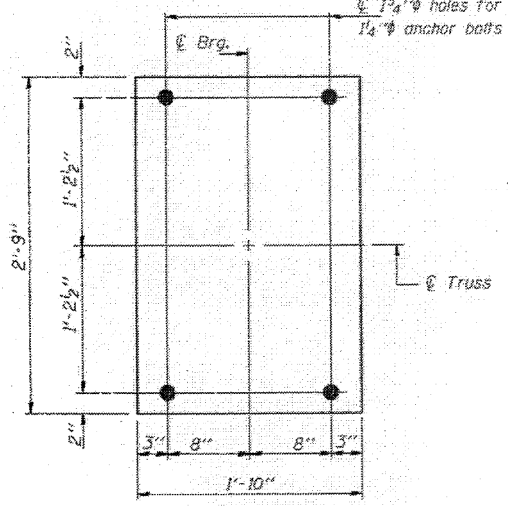
0.5" per each 100' of expansion for every 15 °F. temp. change from the normal temp. of 50 °F.



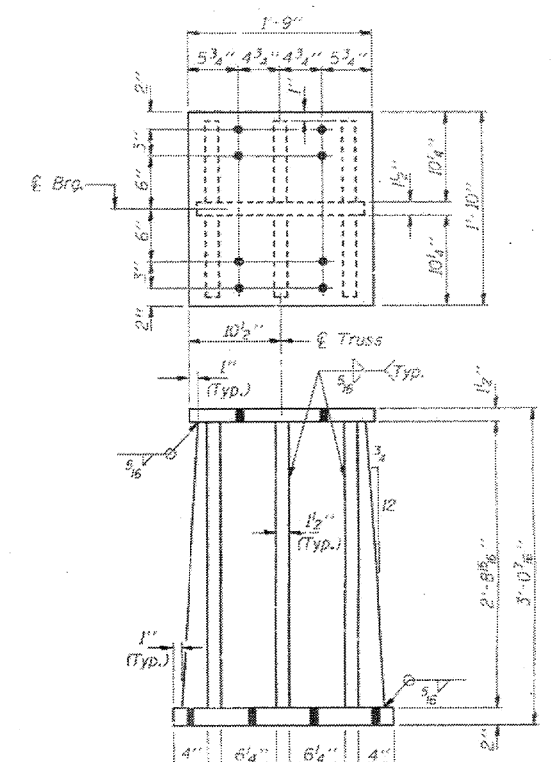
SECTION D-D



PLAN TOP BRG. P
1 1/2" x 22" x 2'-1"



PLAN BOTTOM BRG. P
2 5/8" x 22" x 2'-9"



STEEL EXTENSION

PIER 2

BEARING DATA	
RR (K)	702
RL (K)	172
RTP (K)	25
RR+L+T (K)	899
Lateral Load (K)	140
Expansion Length	2.16'

Notes: For Anchor Bolt installation details see Sheet 4 of 4.
Provide 2-1/2" x 22" x 2'-9" adjusting shims for each Bearing at Pier 2.

MODEL: Default
FILE: \\p11010848\BID\NETC\Illinois\gov\p11010848\Documents\DOT Office\BID\Drawings\11010848\CD\000000\Design\01\11010848-01-01.dgn

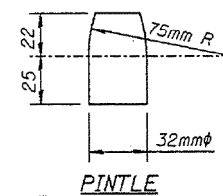
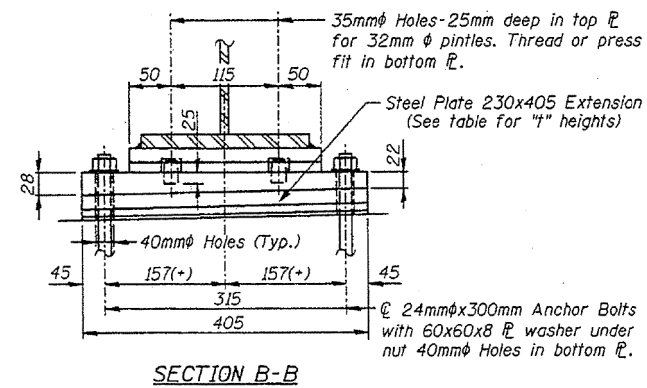
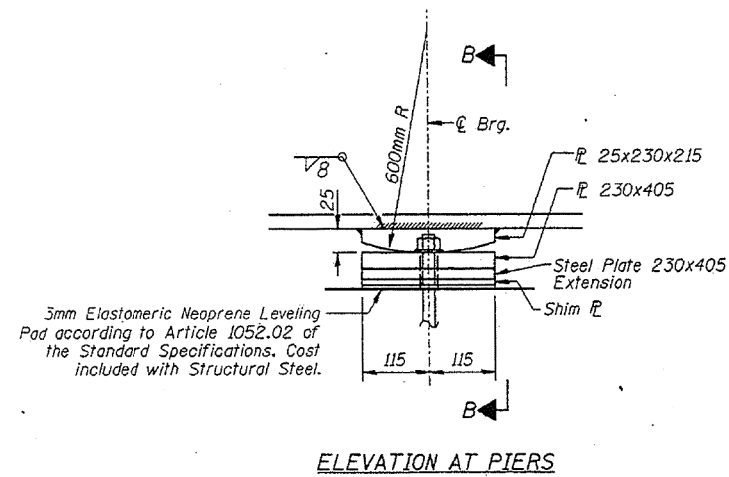
USER NAME = pyranowski	DESIGNED -	REVISED -
PLOT SCALE = 100.0000' / in.	DRAWN -	REVISED -
PLOT DATE = 5/11/2018	CHECKED -	REVISED -
	DATE -	REVISED -

STATE OF ILLINOIS
DEPARTMENT OF TRANSPORTATION

BEARING DETAILS (SN 016-0464)
IL RTE. 7 (SOUTHWEST HIGHWAY) (OVER CAL SAG CHANNEL)
SCALE: SHEET OF SHEETS STA. TO STA.

F.A.U. RTE.	SECTION	COUNTY	TOTAL SHEETS	SHEET NO.
3578	2018-009-BP	COOK	27	11
CONTRACT NO. 62G15				
ILLINOIS FED. AID PROJECT				

AREA TO BE PAINTED



FIXED BEARING
(At Abutments & Piers 4, 3, 2 & 1)

STEEL PLATE EXTENSION HEIGHT (mm)

BEAM NO.	I 200x405		I 230x405			
	SOUTH ABUTMENT	NORTH ABUTMENT	PIER 4	PIER 3	PIER 2	PIER 1
1	59	72	60	41	73	68
2	64	76	63	42	71	71
3	69	78	65	45	71	75
4	75	82	68	47	70	78
5	80	85	69	49	70	82
6	86	89	72	50	68	85
7	88	86	72	50	66	86
8	85	84	65	43	56	81
9	82	78	58	37	47	75
10	80	75	54	32	39	71
11	80	75	54	32	39	71
12	81	78	57	35	40	72
13	83	83	62	39	41	75
14	86	88	69	44	42	77
15	82	86	67	41	37	72
16	76	82	63	38	30	66
17	69	78	60	33	23	59
18	63	74	56	29	15	52
19	57	71	52	24	7	45
20	51	67	-	21	-	38

NOTES:

Prior to ordering any Material, the Contractor shall verify in the field, all Bearing height and shim thickness dimensions.

All Steel Extensions, Bearing Plates & Pintles to be AASHTO M270M Gr. 345.

See Sht. S23 for Anchor Bolt Installation.

All Dimensions are in millimeters (mm) except as noted.

MODEL: Default
 FILE: \\hulb08aebid\ntec\illinois\gov\pww\dot\Documents\DOT_Offices\Director_1\Projects\Design\CADD\Bearing\2018\016\0464\CAD\Bearing\016xxxx-struct-plm.dgn

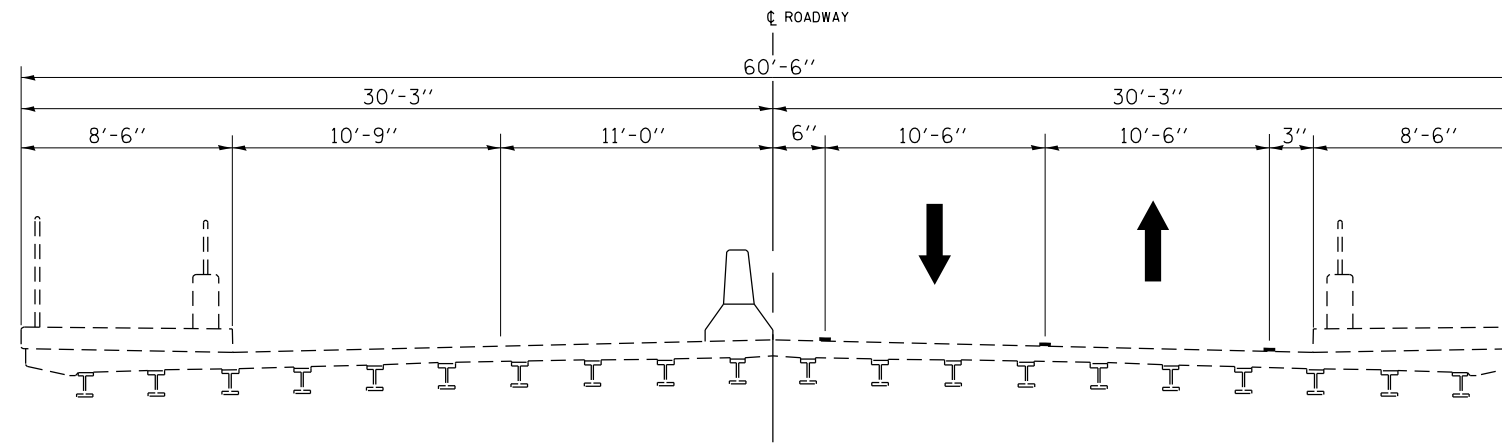
USER NAME = pyzranowski	DESIGNED -	REVISED -
	DRAWN -	REVISED -
PLOT SCALE = 100.0000' / in.	CHECKED -	REVISED -
PLOT DATE = 5/11/2018	DATE -	REVISED -

STATE OF ILLINOIS
DEPARTMENT OF TRANSPORTATION

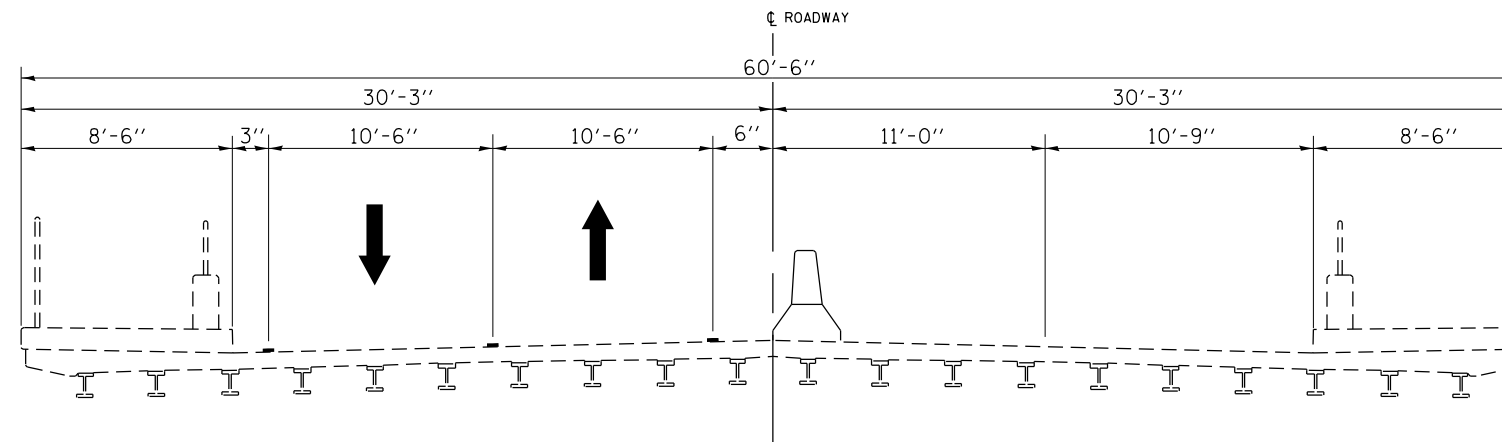
BEARING DETAILS (SN 016-0464)
IL RTE. 7 (SOUTHWEST HIGHWAY) (OVER CAL SAG CHANNEL)

SCALE: SHEET OF SHEETS STA. TO STA.

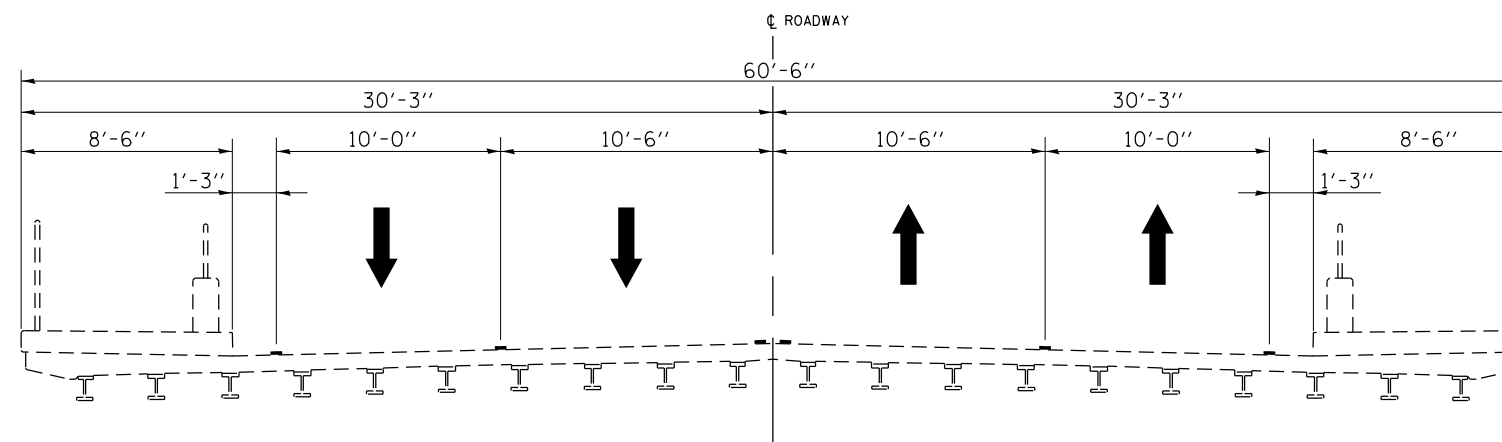
F.A.U. RTE. 3578	SECTION 2018-009-BP	COUNTY COOK	TOTAL SHEETS 27	SHEET NO. 12
ILLINOIS FED. AID PROJECT			CONTRACT NO. 62G15	



STAGE I CROSS SECTION
(LOOKING NORTH)



STAGE II CROSS SECTION
(LOOKING NORTH)



FINAL CROSS SECTION
(LOOKING NORTH)

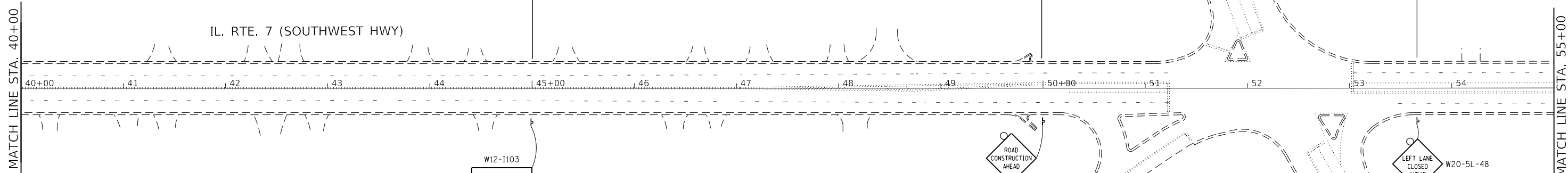
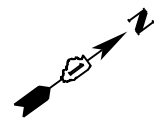
MODEL: Default
 FILE: \\mhc-pw\ulb848E8D1NTEC\Illinois.gov\PIWDOT\Documents\DOT_Offices\District 1\Projects\Design\CADD\BAs\Design\2018\015-0164\CAD\BAs\Design\015-xxxx-2ht-plm.dgn

USER NAME = pyzranowski	DESIGNED -	REVISED -
PLOT SCALE = 100.0000' / in.	DRAWN -	REVISED -
PLOT DATE = 5/11/2018	CHECKED -	REVISED -
	DATE -	REVISED -

**STATE OF ILLINOIS
DEPARTMENT OF TRANSPORTATION**

TRAFFIC STAGING CROSS SECTIONS			
IL RTE. 7 (SOUTHWEST HIGHWAY) (OVER CAL SAG CHANNEL)			
SCALE:	SHEET	OF SHEETS	STA. TO STA.

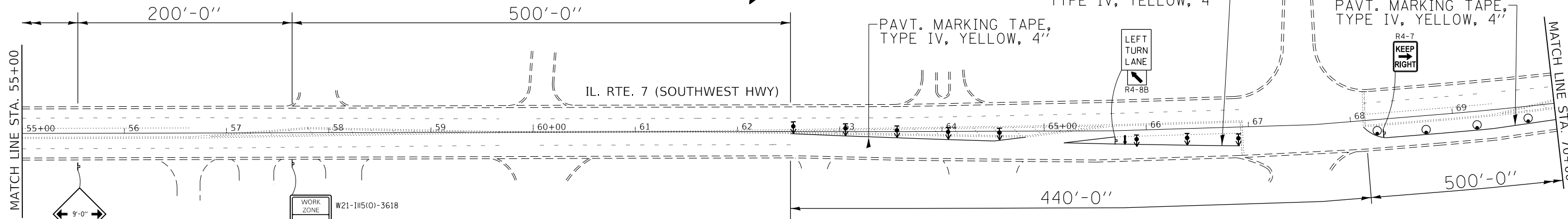
F.A.U. RTE.	SECTION	COUNTY	TOTAL SHEETS	SHEET NO.
3578	2018-009-BP	COOK	27	15
CONTRACT NO. 62G15				
ILLINOIS FED. AID PROJECT				



LEGEND

- BI-DIRECTIONAL BARRIER WALL MARKERS, TYPE C (CRYSTAL)
- TYPE III BARRICADE
- DRUM WITH STEADY BURN MONO-DIRECTIONAL LIGHT (LIGHTS ONLY IN TANGENT SECTION)
- WORK ZONE
- IMPACT ATTENUATOR, TEMPORARY, NON-REDIRECTIVE, TEST LEVEL 3
- ARROW BOARD
- TEMPORARY CONCRETE BARRIER
- DIRECTION INDICATOR BARRICADE WITH STEADY BURN MONODIRECTIONAL LIGHT @ 25' SPACING

W12-1103
MAX WIDTH
9'-0"
0.5 MILES AHEAD



WORK ZONE	W21-1115(O)-3618
SPEED LIMIT	R2-1-3648
35	
PHOTO ENFORCED	R10-19αP-3618
\$XXX FINE MINIMUM	R2-1106-3618

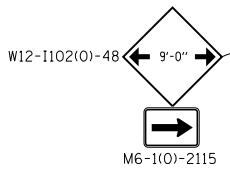
MODEL: Default
 FILE: \\nas01\p01\B&E\BID\NTEC\Illinois.gov\RW\DOT\Documents\DOT_Offices\Director\Projects\Design\CADD\B&E\Design\2018\0154\6464\CADD\B&E\Design\B1\11111111.dgn

USER NAME = pyzranowski	DESIGNED -	REVISED -
	DRAWN -	REVISED -
PLOT SCALE = 100,0000' / in.	CHECKED -	REVISED -
PLOT DATE = 5/11/2018	DATE -	REVISED -

**STATE OF ILLINOIS
DEPARTMENT OF TRANSPORTATION**

STAGE I			
IL. RTE. 7 (SOUTHWEST HIGHWAY) (OVER CAL SAG CHANNEL)			
SCALE:	SHEET	OF SHEETS	STA. TO STA.

F.A.U. RTE.	SECTION	COUNTY	TOTAL SHEETS	SHEET NO.
3578	2018-009-BP	COOK	27	16
CONTRACT NO. 62G15				
ILLINOIS		FED. AID PROJECT		



111th ST.

200'-0"

1200'-0"

112th PL.

IL. RTE. 7 (SOUTHWEST HWY)

MATCH LINE STA. 99+00

MATCH LINE STA. 114+00

99

100+00

101

102

103

104

105+00

106

107

108

109

110+00

111

112

113



W20-5R(0)-48

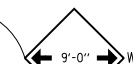


W20-1103(0)-48

LEGEND

- BI-DIRECTIONAL BARRIER WALL MARKERS, TYPE C (CRYSTAL)
- TYPE III BARRICADE
- DRUM WITH STEADY BURN MONO-DIRECTIONAL LIGHT (LIGHTS ONLY IN TANGENT SECTION)
- WORK ZONE
- IMPACT ATTENUATOR, TEMPORARY, NON-REDIRECTIVE, TEST LEVEL 3
- ARROW BOARD
- TEMPORARY CONCRETE BARRIER
- DIRECTION INDICATOR BARRICADE WITH STEADY BURN MONODIRECTIONAL LIGHT @ 25' SPACING

W12-1103
MAX WIDTH
9'-0"
0.7 MILES AHEAD

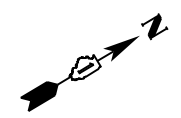


W12-1102(10)-48

M6-1(0)-2115

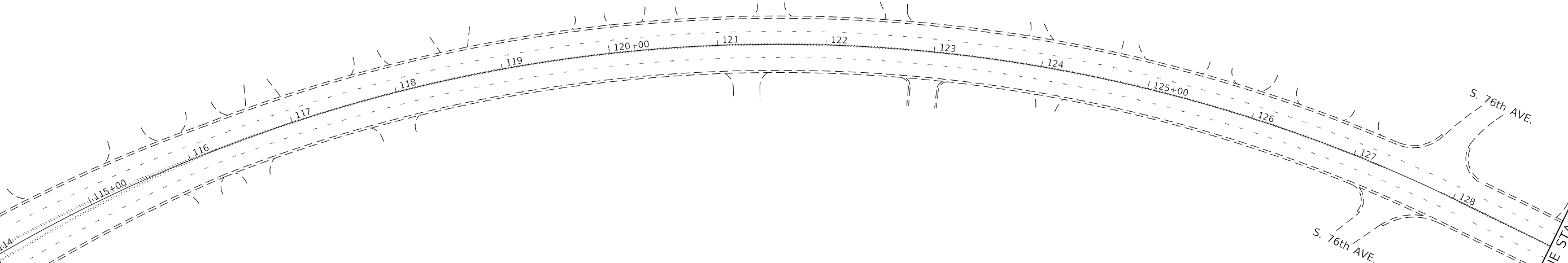
111th ST.

IL. RTE. 7 (SOUTHWEST HWY)



MATCH LINE STA. 114+00

MATCH LINE STA. 129+00



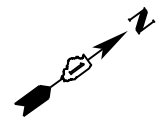
MODEL: Default
FILE: h:\mhc\p\11408\BID\NTEC\Illinois.gov\PWIDOT\Documents\DOT_Offices\Director_1\Projects\Design\CADD\Bids\Design\2018\1016\0464\CADD\Bids\Design\1016\0464\NTEC\Bids\Bids.dgn

USER NAME = pyrzanowski	DESIGNED -	REVISED -
PLOT SCALE = 100,0000' / in.	DRAWN -	REVISED -
PLOT DATE = 5/11/2018	CHECKED -	REVISED -
	DATE -	REVISED -

STATE OF ILLINOIS
DEPARTMENT OF TRANSPORTATION

STAGE I			
IL. RTE. 7 (SOUTHWEST HIGHWAY) (OVER CAL SAG CHANNEL)			
SCALE:	SHEET	OF SHEETS	STA. TO STA.

F.A.U. RTE. 3578	SECTION 2018-009-BP	COUNTY COOK	TOTAL SHEETS 27	SHEET NO. 18
CONTRACT NO. 62G15				
ILLINOIS FED. AID PROJECT				



MATCH LINE STA. 40+00

MATCH LINE STA. 55+00

40+00 41 42 43 44 45+00 46 47 48 49 50+00 51 52 53 54

LEGEND

- BI-DIRECTIONAL BARRIER WALL MARKERS, TYPE C (CRYSTAL)
- TYPE III BARRICADE
- DRUM WITH STEADY BURN MONO-DIRECTIONAL LIGHT (LIGHTS ONLY IN TANGENT SECTION)
- WORK ZONE
- IMPACT ATTENUATOR, TEMPORARY, NON-REDIRECTIVE, TEST LEVEL 3
- ARROW BOARD
- TEMPORARY CONCRETE BARRIER
- DIRECTION INDICATOR BARRICADE WITH STEADY BURN MONODIRECTIONAL LIGHT @ 25' SPACING

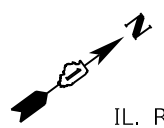
W12-1103
MAX WIDTH
9'-0"
0.5 MILES
AHEAD

MATCH LINE STA. 55+00

MATCH LINE STA. 70+00

55+00 56 57 58 59 60+00 61 62 63 64 65+00 66 67 68 69

WORK ZONE W21-115(0)-3618
SPEED LIMIT R2-1-3648
35
PHOTO ENFORCED R10-19aP-3618
SXXX FINE MINIMUM R2-1106-3618



IL. RTE. 7 (SOUTHWEST HWY)

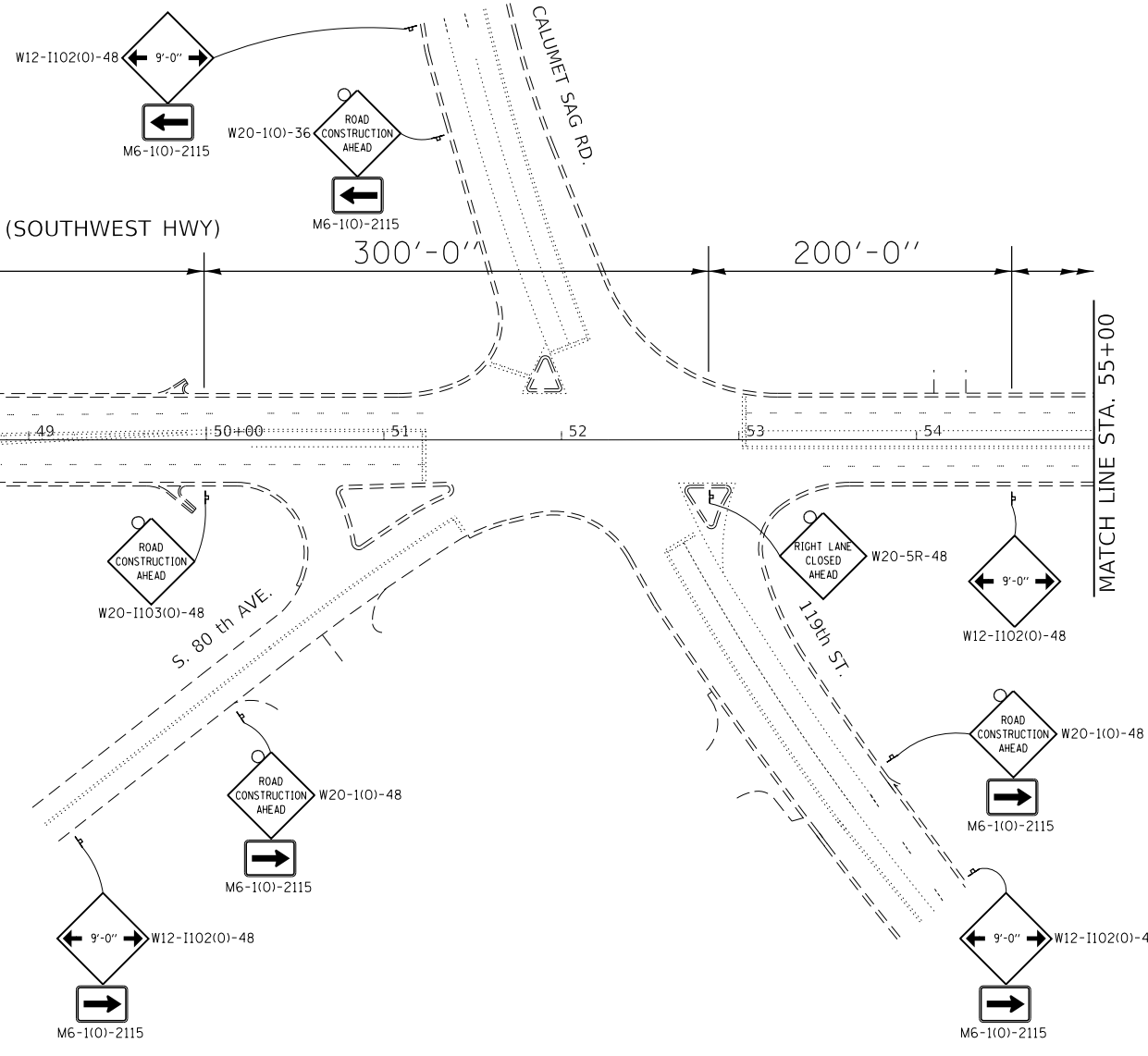
500'-0" IL. RTE. 7 (SOUTHWEST HWY) 300'-0" 200'-0"

PAVT. MARKING TAPE, TYPE IV, WHITE, 4"

PAVT. MARKING TAPE, TYPE IV, WHITE, 4"

440'-0"

500'-0"



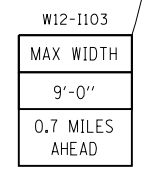
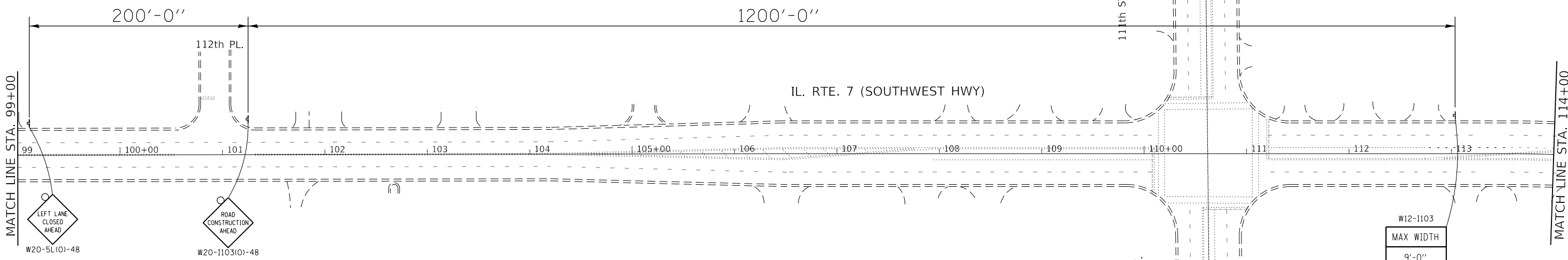
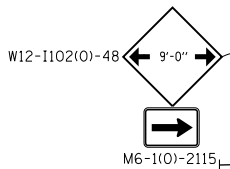
MODEL: Default
FILE: \\blc08a8e1d1ntec\illinois\pov\p\w\dot\Documents\DOT_Offices\Director_1\Projects\Bridges\CAD\Drawings\2018\0154\6464\CAD\Drawings\DOT\1xxxxx-2ht-2p1a.dgn

USER NAME = pyzranowski	DESIGNED -	REVISED -
PLOT SCALE = 100.0000' / in.	DRAWN -	REVISED -
PLOT DATE = 5/11/2018	CHECKED -	REVISED -
	DATE -	REVISED -

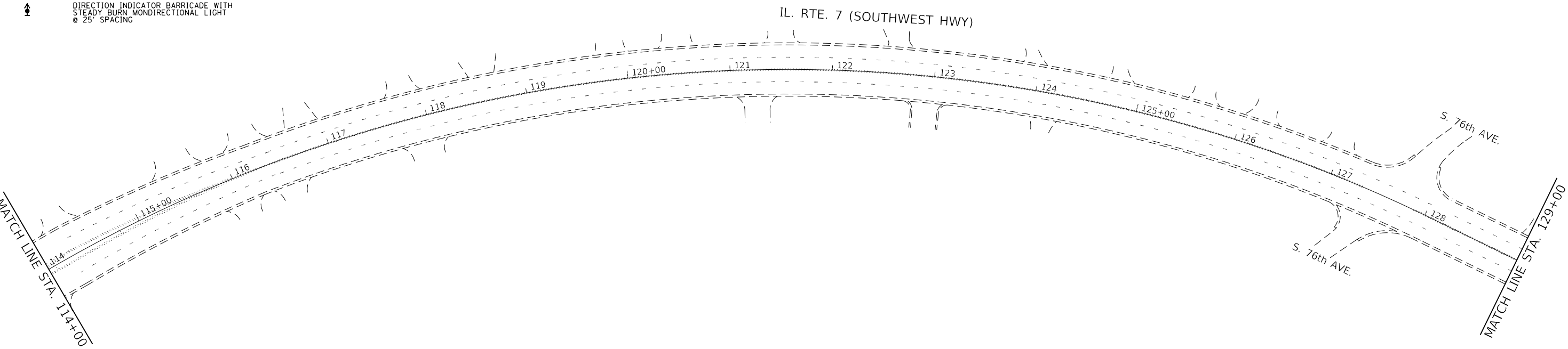
**STATE OF ILLINOIS
DEPARTMENT OF TRANSPORTATION**

STAGE II			
IL. RTE. 7 (SOUTHWEST HIGHWAY) (OVER CAL SAG CHANNEL)			
SCALE:	SHEET	OF SHEETS	STA. TO STA.

F.A.U. RTE. 3578	SECTION 2018-009-BP	COUNTY COOK	TOTAL SHEETS 27	SHEET NO. 19
CONTRACT NO. 62G15				
ILLINOIS FED. AID PROJECT				



- LEGEND**
- BI-DIRECTIONAL BARRIER WALL MARKERS, TYPE C (CRYSTAL)
 - TYPE III BARRICADE
 - DRUM WITH STEADY BURN MONO-DIRECTIONAL LIGHT (LIGHTS ONLY IN TANGENT SECTION)
 - WORK ZONE
 - IMPACT ATTENUATOR, TEMPORARY, NON-REDIRECTIVE, TEST LEVEL 3
 - ARROW BOARD
 - TEMPORARY CONCRETE BARRIER
 - DIRECTION INDICATOR BARRICADE WITH STEADY BURN MONODIRECTIONAL LIGHT @ 25' SPACING



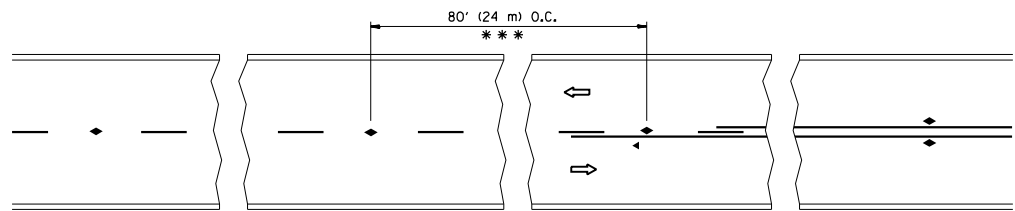
MODEL: Default
 FILE: \\blu08a08e01dntec\illinois\gov\pww\dot\Documents\DOT - Offices\Director - 1\Projects\Design\CADD\BNA\Design\2018\016\046\CAD\BNA\BNA.dgn

USER NAME = pyrzanowski	DESIGNED -	REVISED -
PLOT SCALE = 100,0000' / in.	DRAWN -	REVISED -
PLOT DATE = 5/11/2018	CHECKED -	REVISED -
	DATE -	REVISED -

**STATE OF ILLINOIS
DEPARTMENT OF TRANSPORTATION**

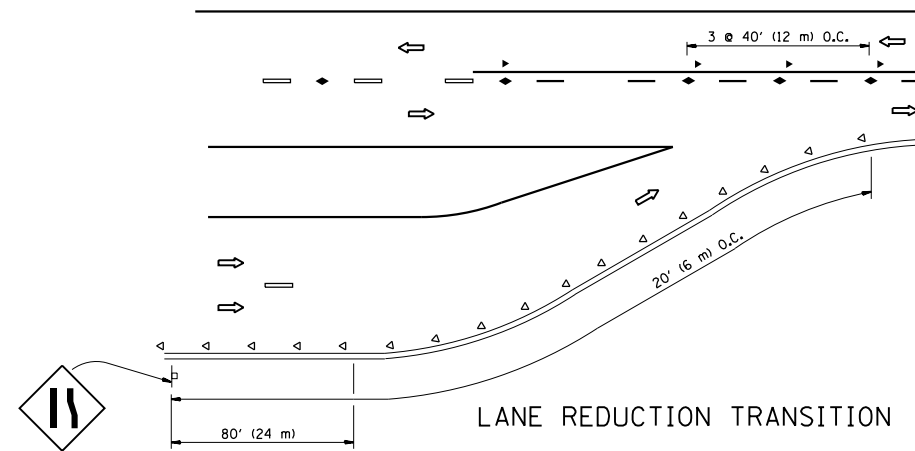
STAGE II			
IL. RTE. 7 (SOUTHWEST HIGHWAY) (OVER CAL SAG CHANNEL)			
SCALE:	SHEET	OF SHEETS	STA. TO STA.

F.A.U. RTE. 3578	SECTION 2018-009-BP	COUNTY COOK	TOTAL SHEETS 27	SHEET NO. 21
CONTRACT NO. 62G15				
ILLINOIS FED. AID PROJECT				

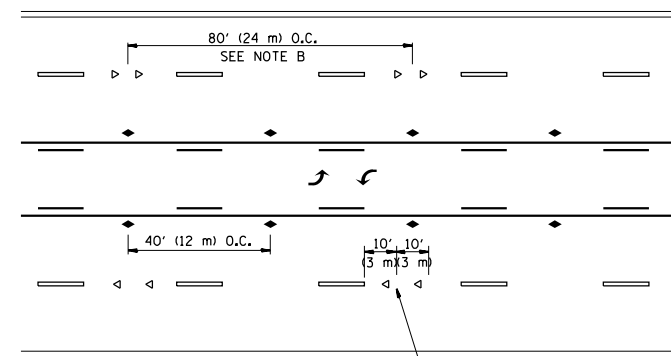


*** REDUCE TO 40' (12 m) O.C. ON CURVES WITH POSTED OR ADVISORY SPEED 45 M.P.H. (70 km/h) OR LESS.

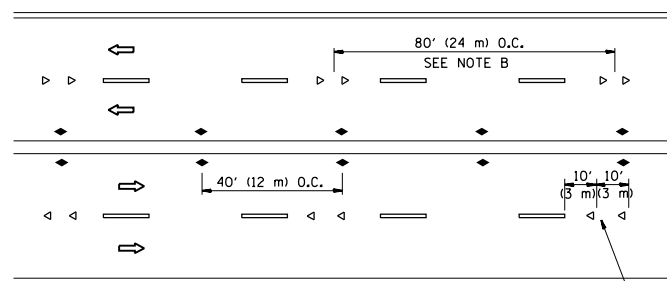
TWO-LANE/TWO-WAY



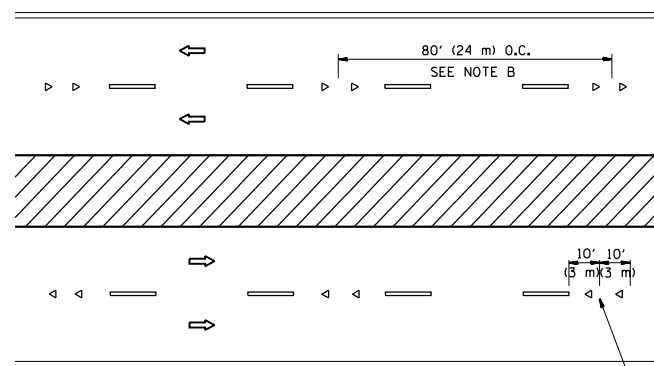
LANE REDUCTION TRANSITION



TWO-WAY LEFT TURN



MULTI-LANE/UNDIVIDED



MULTI-LANE/DIVIDED

GENERAL NOTES

1. MARKERS USED WITH DASHED LINES SHALL BE CENTERED IN THE GAP BETWEEN SEGMENTS.
2. MARKERS USED ADJACENT TO SOLID LINES SHALL BE OFFSET 2 TO 3 (50 TO 75) TOWARD TRAFFIC AS SHOWN.
3. MARKERS THROUGH TANGENTS LESS THAN 500' (150 m) IN LENGTH BETWEEN CURVES SHALL BE INSTALLED AT THE LESSER OF THE TWO CURVE SPACINGS.

SYMBOLS

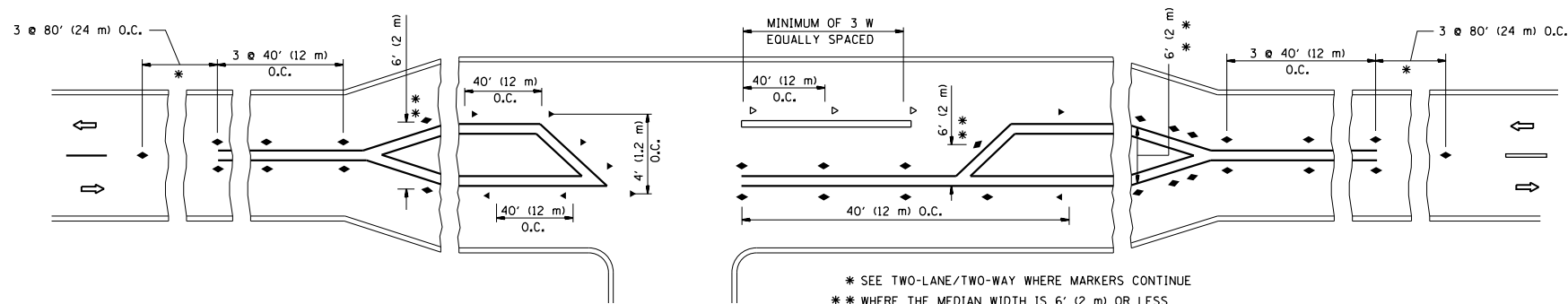
- YELLOW STRIPE
- WHITE STRIPE
- ◀ ONE-WAY AMBER MARKER
- ◁ ONE-WAY CRYSTAL MARKER (W/O)
- ◆ TWO-WAY AMBER MARKER

LANE MARKER NOTES

- A. USE DOUBLE LANE LINE MARKERS SPACED AS SHOWN.
- B. REDUCE TO 40' (12 m) O.C. ON CURVES WHERE ADVISORY SPEEDS ARE 10 M.P.H (20 km/h) LOWER THAN POSTED SPEEDS.

DESIGN NOTES

1. DOUBLE LANE LINE MARKERS SHALL BE USED UNLESS SPECIFIED OTHERWISE.
2. EXCEPT AS SHOWN ON THE LANE REDUCTION TRANSITION AND FREEWAY EXIT RAMP DETAIL, MARKERS ARE NOT TO BE SPECIFIED ON RIGHT EDGE LINES.
3. THE EXACT MARKER LIMITS, SPACING, AND COLOR SHALL BE INCLUDED IN THE PLANS WHEN STANDARD SPECIFICATIONS ARE NOT BEING USED.
4. MARKERS SHOULD NOT BE USED ALONGSIDE CURBS EXCEPT FOR EXTREMELY SHORT SECTIONS OF CURBS WHERE NOT MORE THAN TWO MARKERS WOULD BE INVOLVED.

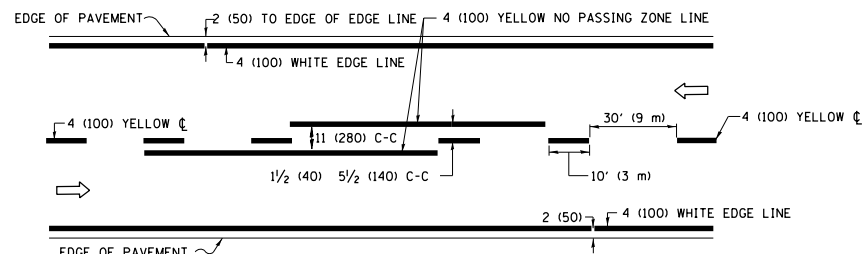


LEFT TURN

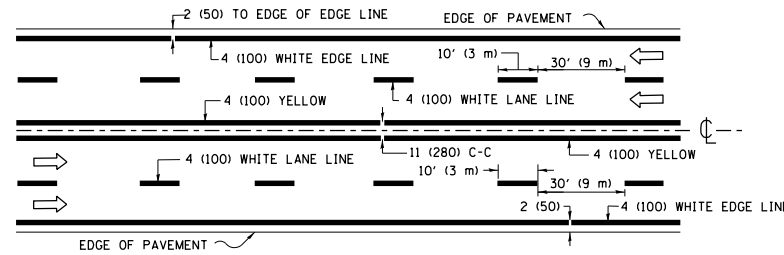
* SEE TWO-LANE/TWO-WAY WHERE MARKERS CONTINUE
 ** WHERE THE MEDIAN WIDTH IS 6' (2 m) OR LESS USE TWO-WAY MARKERS.

All dimensions are in inches (millimeters) unless otherwise shown.

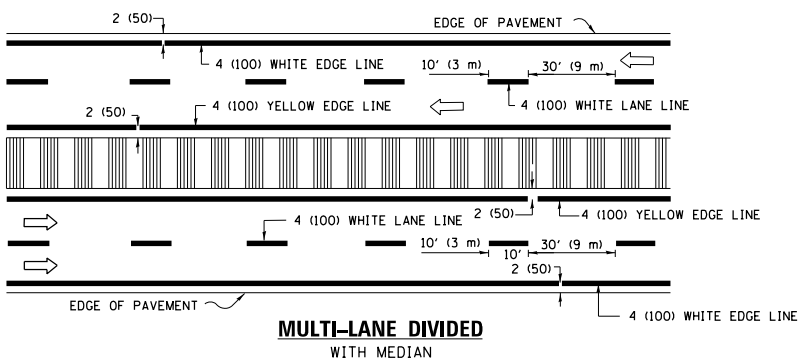
FILE NAME =	USER NAME = pyznowskirb	DESIGNED -	REVISED - T. RAMMACHER 09-19-94	STATE OF ILLINOIS DEPARTMENT OF TRANSPORTATION	TYPICAL APPLICATIONS RAISED REFLECTIVE PAVEMENT MARKERS (SNOW-PLOW RESISTANT)			F.A.U. RTE.	SECTION	COUNTY	TOTAL SHEETS	SHEET NO.
pw:\11\084EBIDINTEG.illinois.gov\PI\DOT\Documents\DOT Offices\District 1\Projects\Design\2018\016-0464\CADD\DATA\REVISED\T. RAMMACHER 03-12-99	DRAWN to Design\2018\016-0464\CADD\DATA\REVISED\T. RAMMACHER 01-06-00	CHECKED -	REVISED - T. RAMMACHER 01-06-00					3578	2018-009-BP	COOK	27	24
PLOT SCALE = 100.0000' / in.	DATE -	REVISED - C. JUCIUS 09-09-09	REVISED - C. JUCIUS 09-09-09		TC-11		CONTRACT NO. 62G15					
PLOT DATE = 5/11/2018					FED. ROAD DIST. NO. 1 ILLINOIS FED. AID PROJECT							



2-LANE ROADWAY

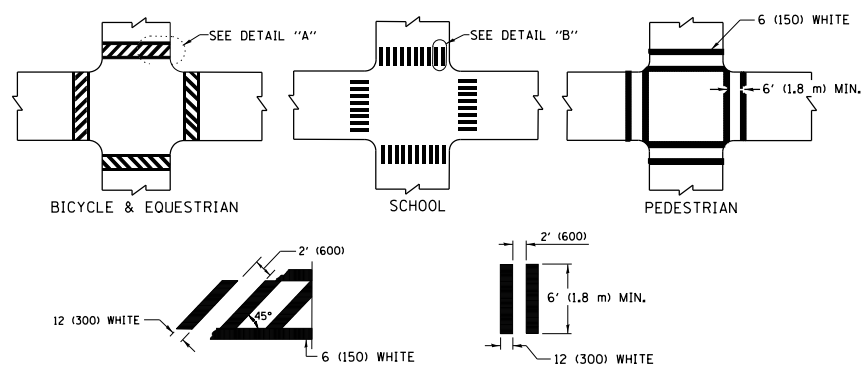


MULTI-LANE UNDIVIDED



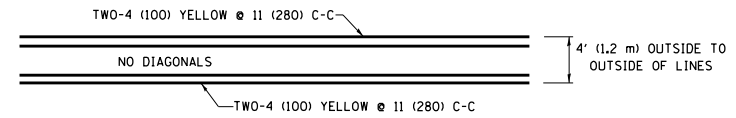
MULTI-LANE DIVIDED WITH MEDIAN

TYPICAL LANE AND EDGE LINE MARKING

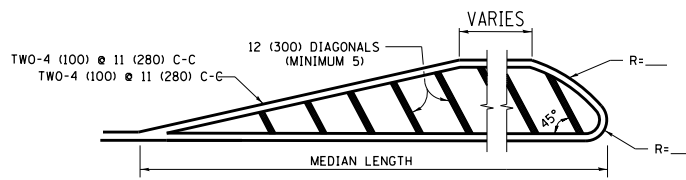


TYPICAL CROSSWALK MARKING

* MARKINGS SHALL BE INSTALLED PARALLEL TO THE CENTERLINE OF THE ROAD WHICH IT CROSSES

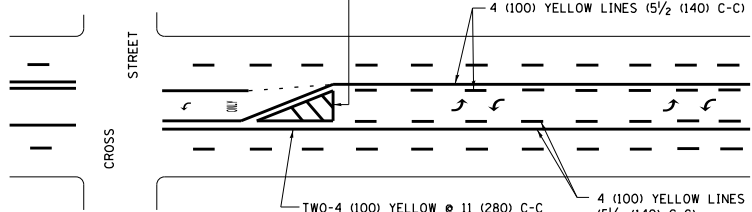


4' (1.2 m) WIDE MEDIANS ONLY



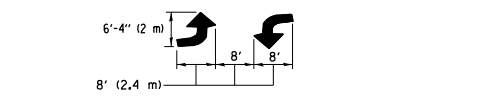
MEDIANS OVER 4' (1.2 m) WIDE

DIAGONAL LINE SPACING: 50' (15 m) C-C (LESS THAN 30MPH (50 km/h))
75' (25 m) C-C 30MPH (50 km/h) TO 45MPH (70 km/h)
150' (45 m) C-C (MORE THAN 45MPH (70 km/h))



MEDIAN WITH TWO-WAY LEFT TURN LANE TYPICAL PAINTED MEDIAN MARKING

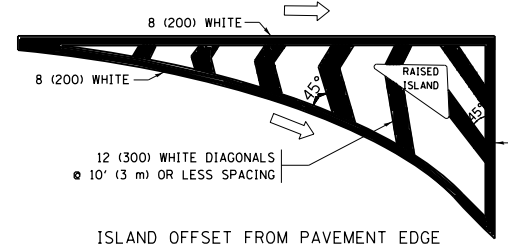
A MINIMUM OF TWO PAIRS OF TURN ARROWS SHALL BE USED, WHITE IN COLOR. ADDITIONAL PAIRS SHALL BE PLACED AT 200' (60 m) TO 300' (90 m) INTERVALS.



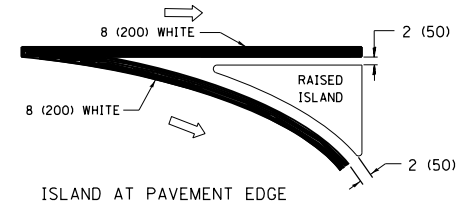
TYPICAL LEFT (OR RIGHT) TURN LANE

TYPICAL TURN LANE MARKING

FULL SIZE LETTERS 8' (2.4 m) AND ARROWS SHALL BE USED.
AREA = 15.6 SQ. FT. (1.5 m²) ONLY AREA = 20.8 SQ. FT. (1.9 m²)
* TURN LANES IN EXCESS OF 400' (120 m) IN LENGTH MAY HAVE AN ADDITIONAL SET OF ARROW - "ONLY" INSTALLED MIDWAY BETWEEN THE OTHER TWO SETS OF ARROW - "ONLY".

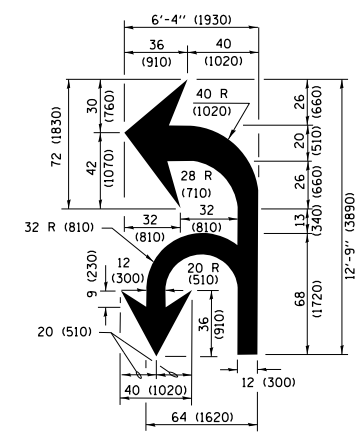


ISLAND OFFSET FROM PAVEMENT EDGE

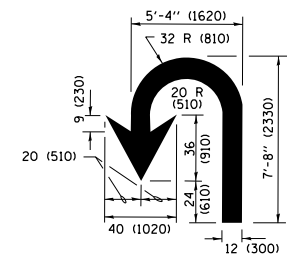


ISLAND AT PAVEMENT EDGE

TYPICAL ISLAND MARKING



COMBINATION LEFT AND U-TURN



U-TURN

LANE REDUCTION TRANSITION

* LANE REDUCTION ARROWS REQUIRED AT SPEEDS OF 45 MPH OR GREATER OR WHEN SPECIFIED IN PLANS.

D(FT)	SPEED LIMIT
345	30
425	35
500	40
580	45
665	50
750	55

TYPE OF MARKING	WIDTH OF LINE	PATTERN	COLOR	SPACING /REMARKS
CENTERLINE ON 2 LANE PAVEMENT	4 (100)	SKIP-DASH	YELLOW	10' (3 m) LINE WITH 30' (9 m) SPACE
CENTERLINE ON MULTI-LANE UNDIVIDED PAVEMENT	2 @ 4 (100)	SOLID	YELLOW	11 (280) C-C
NO PASSING ZONE LINES FOR ONE DIRECTION FOR BOTH DIRECTIONS	4 (100) 2 @ 4 (100)	SOLID SOLID	YELLOW YELLOW	5/2 (140) C-C FROM SKIP-DASH CENTERLINE 11 (280) C-C OMIT SKIP-DASH CENTERLINE BETWEEN
LANE LINES	4 (100) 5 (125) ON FREEWAYS	SKIP-DASH SKIP-DASH	WHITE WHITE	10' (3 m) LINE WITH 30' (9 m) SPACE
DOTTED LINES (EXTENSIONS OF CENTER, LANE OR TURN LANE MARKINGS)	SAME AS LINE BEING EXTENDED	SKIP-DASH	SAME AS LINE BEING EXTENDED	2' (600) LINE WITH 6' (1.8 m) SPACE
EDGE LINES	4 (100)	SOLID	YELLOW-LEFT WHITE-RIGHT	OUTLINE MEDIANS IN YELLOW
TURN LANE MARKINGS	6 (150) LINE; FULL SIZE LETTERS & SYMBOLS (8' (2.4m))	SOLID	WHITE	SEE TYPICAL TURN LANE MARKING DETAIL
TWO WAY LEFT TURN MARKING	2 @ 4 (100) EACH DIRECTION 8' (2.4m) LEFT ARROW	SKIP-DASH AND SOLID IN PAIRS	YELLOW WHITE	10' (3 m) LINE WITH 30' (9 m) SPACE FOR SKIP-DASH; 5/2 (140) C-C BETWEEN SOLID LINE AND SKIP-DASH LINE SEE TYPICAL TWO-WAY LEFT TURN MARKING DETAIL
CROSSWALK LINES (PEDESTRIAN) A. DIAGONALS (BIKE & EQUESTRIAN) B. LONGITUDINAL BARS (SCHOOL)	2 @ 6 (150) 12 (300) @ 45° 12 (300) @ 90°	SOLID SOLID SOLID	WHITE WHITE WHITE	NOT LESS THAN 6' (1.8 m) APART 2' (600) APART SEE TYPICAL CROSSWALK MARKING DETAILS.
STOP LINES	24 (600)	SOLID	WHITE	PLACE 4' (1.2 m) IN ADVANCE OF AND PARALLEL TO CROSSWALK, IF PRESENT, OTHERWISE, PLACE AT DESIRED STOPPING POINT, PARALLEL TO CROSSROAD CENTERLINE, WHERE POSSIBLE
PAINTED MEDIANS	2 @ 4 (100) WITH 12 (300) DIAGONALS @ 45° NO DIAGONALS USED FOR 4' (1.2 m) WIDE MEDIANS	SOLID	YELLOW; TWO WAY TRAFFIC WHITE; ONE WAY TRAFFIC	11 (280) C-C FOR THE DOUBLE LINE SEE TYPICAL PAINTED MEDIAN MARKING.
GORE MARKING AND CHANNELIZING LINES	8 (200) WITH 12 (300) DIAGONALS @ 45°	SOLID	WHITE	DIAGONALS: 15' (4.5 m) C-C (LESS THAN 30MPH (50 km/h)) 20' (6 m) C-C 30MPH (50 km/h) TO 45MPH (70 km/h) 30' (9 m) C-C (OVER 45MPH (70 km/h))
RAILROAD CROSSING	24 (600) TRANSVERSE LINES; "RR" IS 6' (1.8 m) LETTERS; 16 (400) LINE FOR "X"	SOLID	WHITE	SEE STATE STANDARD 780001 AREA OF: "R"=3.6 SQ. FT. (0.33 m ²) EACH "X"=54.0 SQ. FT. (5.0 m ²)
SHOULDER DIAGONALS (REQUIRED FOR SHOULDERS ≥ 8')	12 (300) @ 45°	SOLID	WHITE - RIGHT YELLOW - LEFT	50' (15 m) C-C (LESS THAN 30MPH (50 km/h)) 75' (25 m) C-C (30 MPH (50 km/h) TO 45MPH (70 km/h)) 150' (45 m) C-C (OVER 45MPH (70 km/h))
U TURN ARROW	SEE DETAIL	SOLID	WHITE	16.3 SF
2 ARROW COMBINATION LEFT AND U TURN	SEE DETAIL	SOLID	WHITE	30.4 SF

FOR FURTHER DETAILS ON PAVEMENT MARKING REFER TO STANDARD SPECIFICATIONS FOR ROAD AND BRIDGE CONSTRUCTION AND STATE STANDARD 780001.

All dimensions are in inches (millimeters) unless otherwise shown.

FILE NAME =	USER NAME = pyrzonowski	DESIGNED - EVERS	REVISED - C. JUCIUS 09-09-09
pw:\IL\084EBID\INTEG\illinois.gov\PI\DOT\Documents\DOT Offices\District 1\Projects\Design\DR\11016-016-0464\CADData\PAVING\Std\sgn		CHECKED -	REVISED - C. JUCIUS 07-01-13
Default	PLOT SCALE = 100.0000' / in.	DATE - 03-19-90	REVISED - C. JUCIUS 12-21-15
	PLOT DATE = 5/11/2018		REVISED - C. JUCIUS 04-12-16

STATE OF ILLINOIS DEPARTMENT OF TRANSPORTATION

DISTRICT ONE TYPICAL PAVEMENT MARKINGS

SCALE: NONE SHEET 1 OF 1 SHEETS STA. TO STA.

F.A.U. RTE.	SECTION	COUNTY	TOTAL SHEETS	SHEET NO.
3578	2018-009-BP	COOK	27	25
TC-13			CONTRACT NO. 62G15	
ILLINOIS FED. AID PROJECT				

TURN BAY ENTRANCE AT START OF LANE CLOSURE TAPER

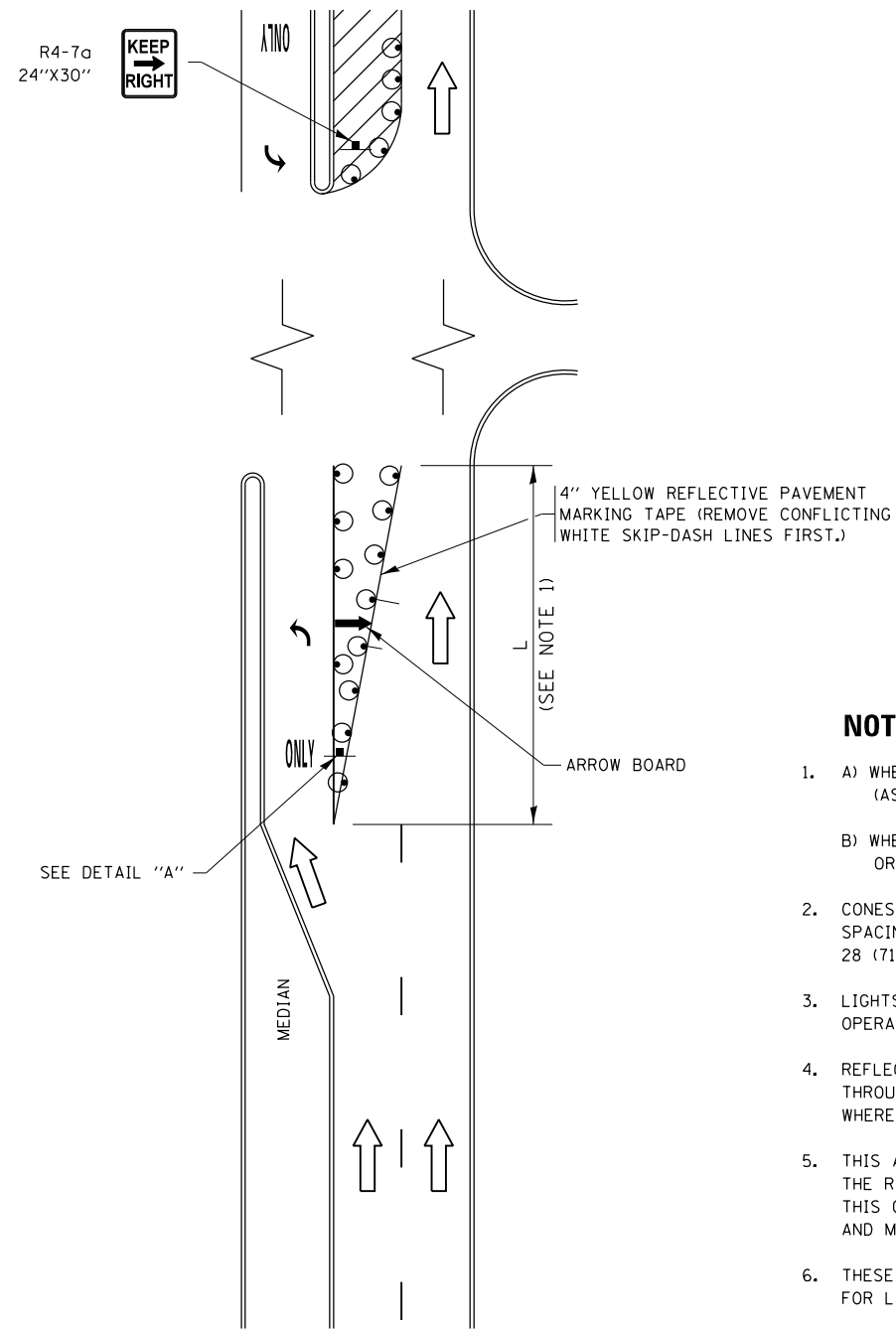
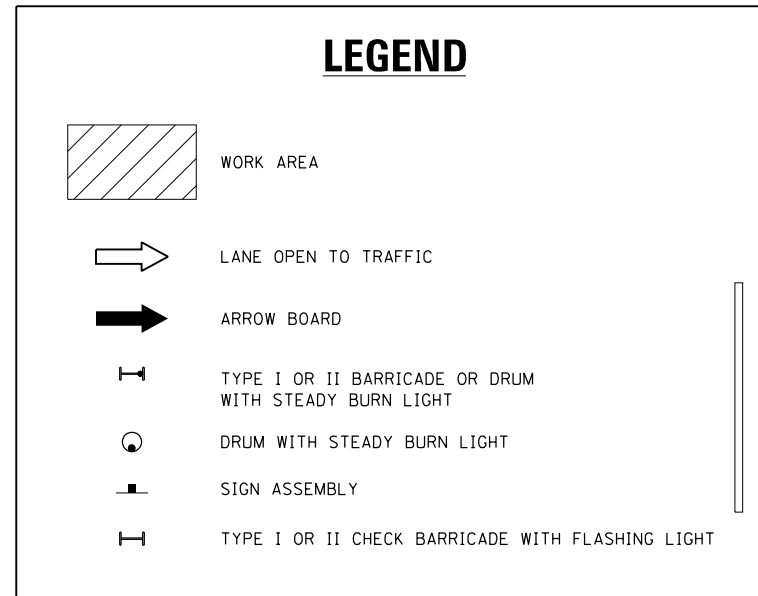


FIGURE 1



NOTES:

1. A) WHEN "L" IS \leq THE STORAGE LENGTH OF THE TURN LANE (AS SHOWN IN FIG. 1), USE FIGURE 1.
B) WHEN "L" IS $>$ THE STORAGE LENGTH OF THE TURN LANE OR THE TURN LANE IS WITHIN THE LANE CLOSURE, USE FIGURE 2.
2. CONES MAY BE SUBSTITUTED FOR BARRICADES OR DRUMS AT HALF THE SPACING DURING DAY OPERATIONS. CONES SHALL BE A MINIMUM OF 28 (710) IN HEIGHT.
3. LIGHTS WILL NOT BE REQUIRED ON BARRICADES OR DRUMS FOR DAY OPERATIONS. ALL LIGHTS SHALL BE MONODIRECTIONAL.
4. REFLECTIVE TEMPORARY PAVEMENT MARKINGS SHALL BE PLACED THROUGHOUT THE BARRICADED AREAS OF EACH TURN BAY AS SHOWN WHERE THE CLOSURE TIME IS GREATER THAN FOURTEEN (14) DAYS.
5. THIS APPLICATION ALSO APPLIES WHEN WORK IS BEING PERFORMED IN THE RIGHT LANE(S) AND THE RIGHT TURN BAY IS TO REMAIN OPEN. UNDER THIS CONDITION, "RIGHT TURN LANE" R3-I100R 24 x 24 (600 x 600) AND M6-2R 21 x 15 (530 x 380) SHALL BE USED.
6. THESE CONTROLS SHALL SUPPLEMENT MAINLINE TRAFFIC CONTROL FOR LANE CLOSURES.
7. THE SIGNS SHALL BE MOUNTED ABOVE THE BARRICADES/DRUMS ON SEPARATE SIGN SUPPORTS THAT MEET NCHRP 350 OR MASH PREQUIREMENTS.
8. TRAFFIC CONTROL AND PROTECTION AT TURN BAYS (TO REMAIN OPEN TO TRAFFIC) SHALL BE INCLUDED IN THE COST OF SPECIFIED TRAFFIC CONTROL STANDARDS OR ITEMS.

TURN BAY ENTRANCE WITHIN A LANE CLOSURE

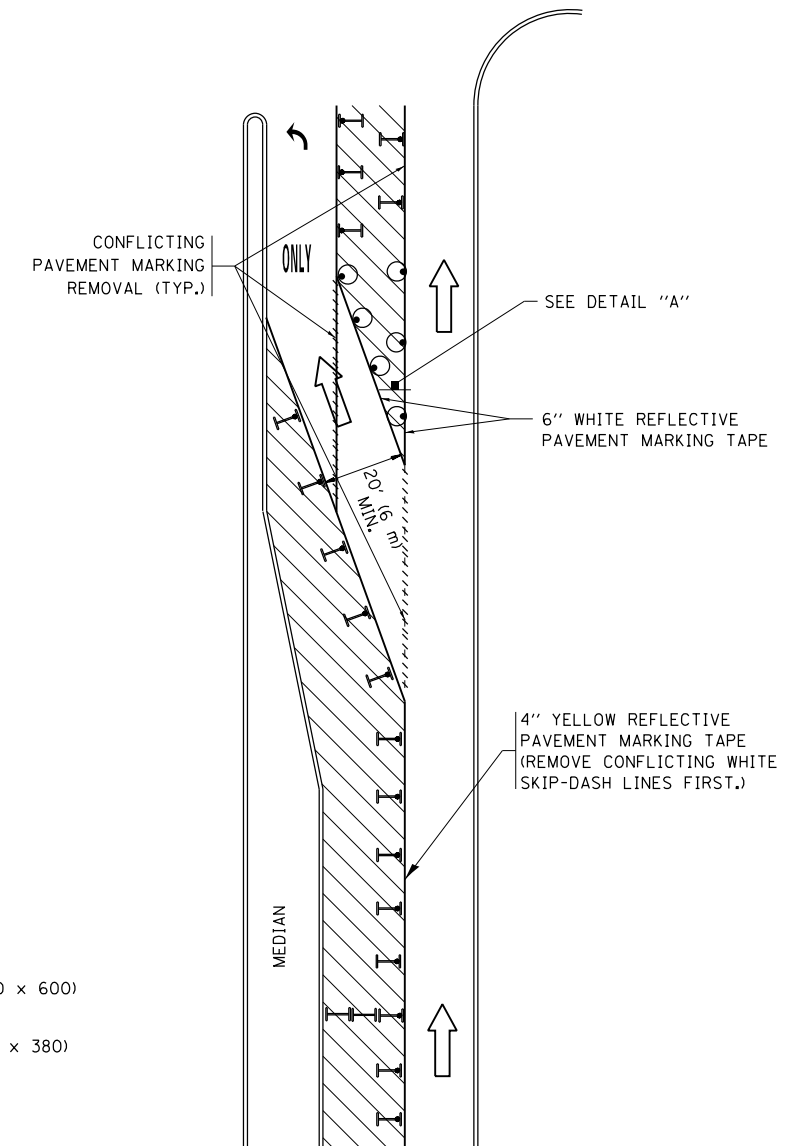
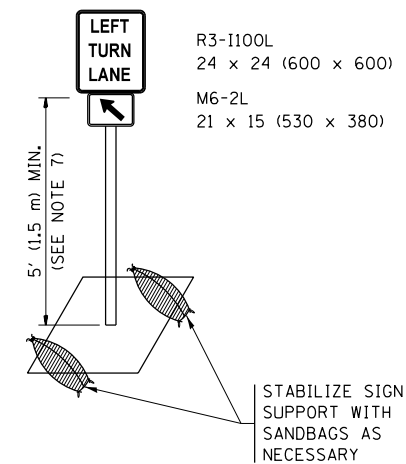


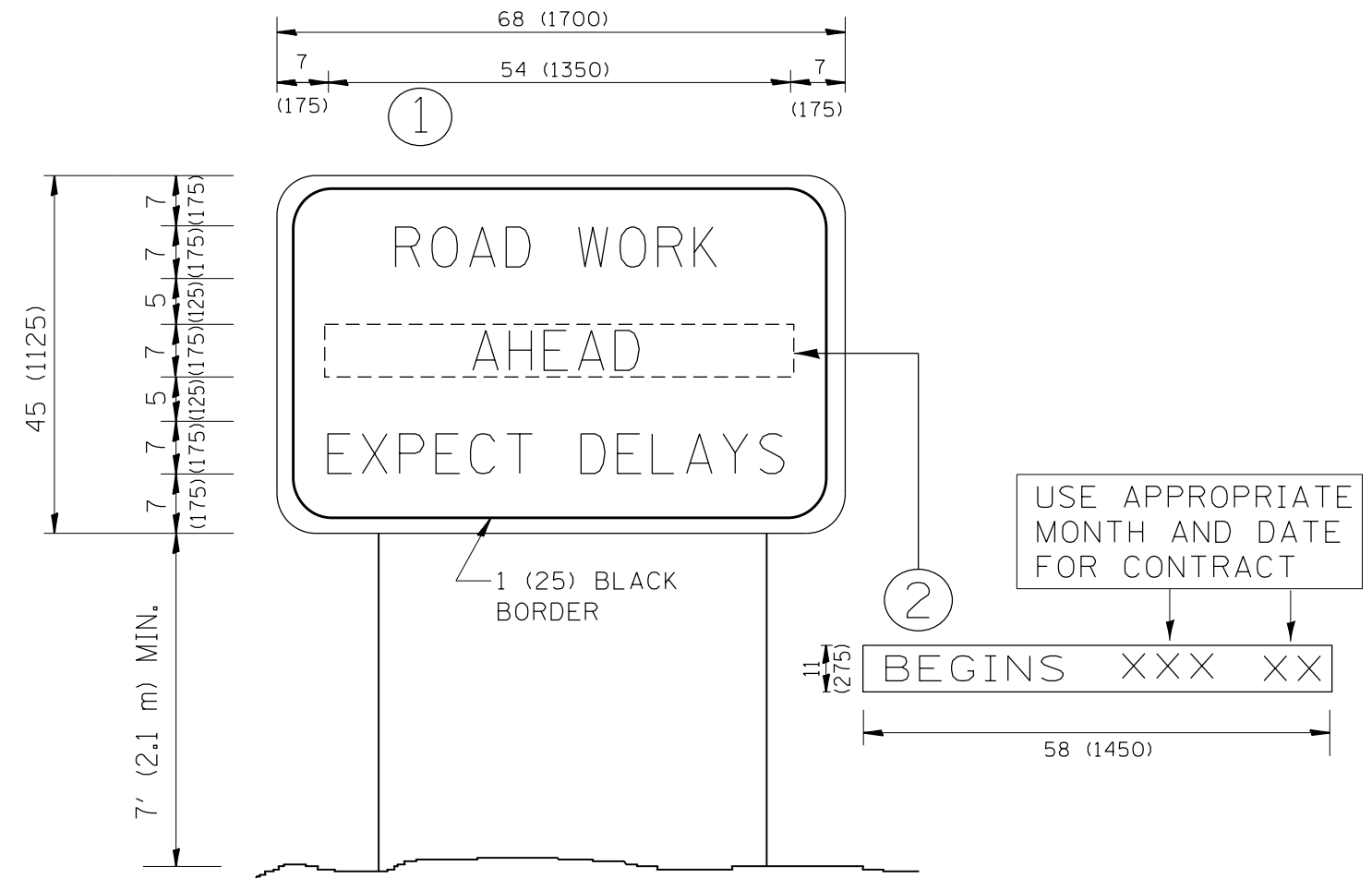
FIGURE 2



DETAIL A

All dimensions are in inches (millimeters) unless otherwise shown.

FILE NAME =	USER NAME = pyrzenowskirb	REVISED - T. RAMMACHER 09-08-94	REVISED - R. BORO 09-14-09	STATE OF ILLINOIS DEPARTMENT OF TRANSPORTATION	TRAFFIC CONTROL AND PROTECTION AT TURN BAYS (TO REMAIN OPEN TO TRAFFIC)			F.A.U. R.T.E.	SECTION	COUNTY	TOTAL SHEETS	SHEET NO.
pw:\IL\084EBIDINTEG\illinois.gov\PIDOT\Documents\DOT Offices\District 1\Projects\Design\2018\HOUSEH-11-01-95\REVISED\Std.dgn	REVISED - A. HOUSEH 10-12-96	REVISED - A. SCHUETZE 07-01-13	REVISED - A. SCHUETZE 09-15-16					3578	2018-009-BP	COOK	27	26
Default	PLOT DATE = 5/11/2018	REVISED - T. RAMMACHER 01-06-00	REVISED -					TC-14			CONTRACT NO. 62G15	
				SCALE: NONE	SHEET 1	OF 1	SHEETS	STA.	TO STA.	ILLINOIS FED. AID PROJECT		



NOTES:

1. USE BLACK LETTERING ON ORANGE BACKGROUND.
2. ERECT SIGNS IN ADVANCE OF THE LOCATION FOR THE "ROAD CONSTRUCTION AHEAD" SIGN AT LOCATIONS AS DIRECTED BY THE ENGINEER.
3. ERECT SIGN ① WITH INSTALLED PANEL ② ONE WEEK PRIOR TO THE START OF CONSTRUCTION.
4. REMOVE PANEL ② SOON AFTER THE START OF CONSTRUCTION.
5. SEE SPECIAL PROVISION FOR "TEMPORARY INFORMATION SIGNING" FOR ADDITIONAL INFORMATION.
6. ONE SIGN ASSEMBLY EQUALS 25.70 SQ. FT. (2.3 SQ. M.)
7. SHALL BE PAID FOR AS TEMPORARY INFORMATION SIGNING.

ALL DIMENSIONS ARE IN INCHES (MILLIMETERS) UNLESS OTHERWISE SHOWN.

FILE NAME =	USER NAME = pyrzenowski	DESIGNED -	REVISED - R. MIRS 09-15-97	STATE OF ILLINOIS DEPARTMENT OF TRANSPORTATION	ARTERIAL ROAD INFORMATION SIGN	F.A.U. RTE.	SECTION	COUNTY	TOTAL SHEETS	SHEET NO.
p:\11\084EBIDINTEG.illinois.gov\PI\DOT\Documents\DOT Offices\District 1\Projects\Design\2018\016-0464\CADData\REVISED	DRAWN -	REVISED - T. RAMMACHER 02-02-99	3578			2018-009-BP	COOK	27	27	
PLOT SCALE = 100.0000' / in.	CHECKED -	REVISED - C. JUCIUS 01-31-07	TC-22			CONTRACT NO. 62G15				
PLOT DATE = 5/11/2018	DATE -		FED. ROAD DIST. NO. 1 ILLINOIS FED. AID PROJECT							
				SCALE: NONE	SHEET NO. 1 OF 1 SHEETS	STA.	TO STA.			