

STATE OF ILLINOIS
DEPARTMENT OF TRANSPORTATION
DIVISION OF HIGHWAYS
PROPOSED
HIGHWAY PLANS

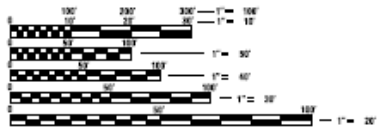
VARIOUS ROUTES
REGION 2 & 3 SIGN MAINTENANCE 23-12
VARIOUS COUNTIES
M-60-012-23

INDEX OF SHEETS

- 1 COVER SHEET
- 2-5 ESTIMATED SUMMARY OF QUANTITIES
- 6-8 SAMPLE WORK ORDER
- 9 CLEAR HEIGHT DETAIL
- 10 EXIT PANEL DETAIL SHEET - B
- 11 REINFORCEMENT PLATE DETAILS
- 12-13 BREAKAWAY STEEL SIGN POST DETAILS
- 14-16 BREAKAWAY COUPLING DEVICES
- 17-18 BREAKAWAY TUBULAR STEEL SIGN POSTS
- 19-24 TYPICAL LOGO SIGNING DETAILS
- 25-27 REST AREA SIGNING DETAILS
- 28 REST AREA SIGN MOUNTING DETAILS
- 29-35 ALUMINUM TRUSS AND SUPPORT FRAME DETAILS
- 36-38 OVERHEAD SIGN STRUCTURES WALKWAY DETAILS
- 39-41 BRIDGE MOUNT SIGN SUPPORT DETAILS
- 42 BRIDGE MOUNT SIGN SUPPORT WALKWAY DETAILS
- 43-46 OVERHEAD SIGN STRUCTURE SPREAD FOOT DETAILS
- 47-50 OVERHEAD SIGN STRUCTURE DRILLED SHAFT DETAILS
- 51-52 OVERHEAD SIGN STRUCTURE MEDIAN FOUNDATION DETAILS
- 53-62 A CANTILEVER SIGN STRUCTURE DETAILS

STANDARDS

- 701006-05
- 701101-05
- 701106-02
- 701201-05
- 701301-04
- 701400-11
- 701401-13
- 701406-13
- 701411-09
- 701426-09
- 701901-08
- 720021-03
- 701428-01
- 701446-11
- 701451-05
- 701456-05



FULL SIZE PLANS HAVE BEEN PREPARED USING STANDARD ENGINEERING SCALES, REDUCED SIZED PLANS WILL NOT CONFORM TO STANDARD SCALES, IN MAKING MEASUREMENTS ON REDUCED PLANS, THE ABOVE SCALES MAY BE USED.

J.U.L.I.E.
 JOINT UTILITY LOCATION INFORMATION FOR EXCAVATION
 1-800-392-0123

CONTRACT NO. 46602

F.A. SITE NUMBER	SECTION	COUNTY	TOTAL SHEETS	SHEET NO.
			* 62 + 1 = 63 TOTAL SHEETS	



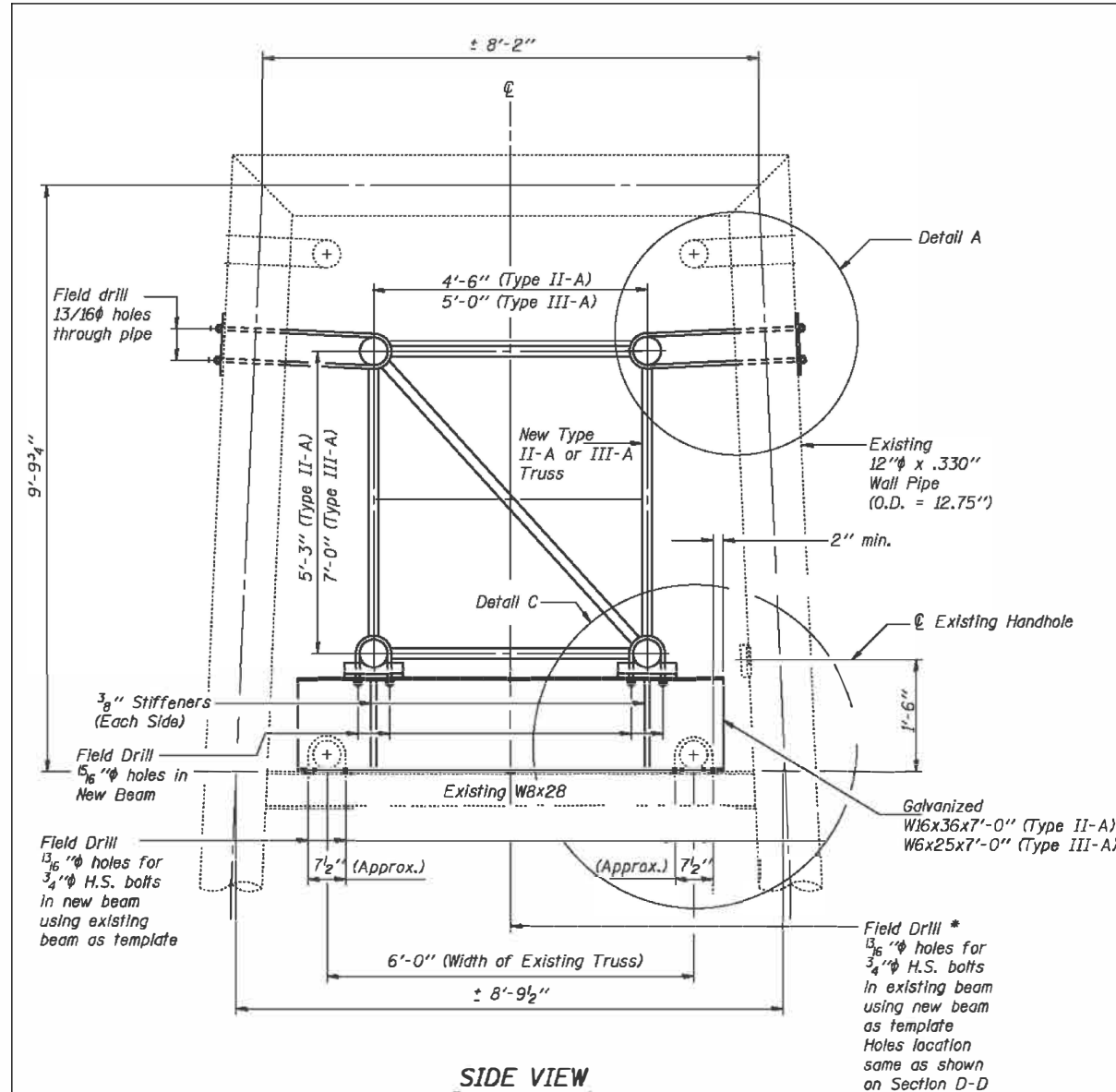
STATE OF ILLINOIS
 DEPARTMENT OF TRANSPORTATION
 DIVISION OF HIGHWAYS

SUBMITTED: June 30, 22
Amey Elden KDA
 REGIONAL ENGINEER

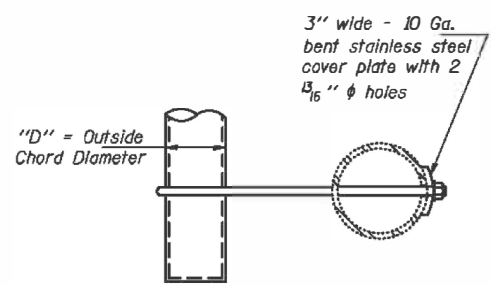
July 1, 2022 [Signature]
 ENGINEER OF DESIGN AND ENVIRONMENT

July 1, 2022 [Signature]
 DIRECTOR OF HIGHWAYS PROJECT IMPLEMENTATION

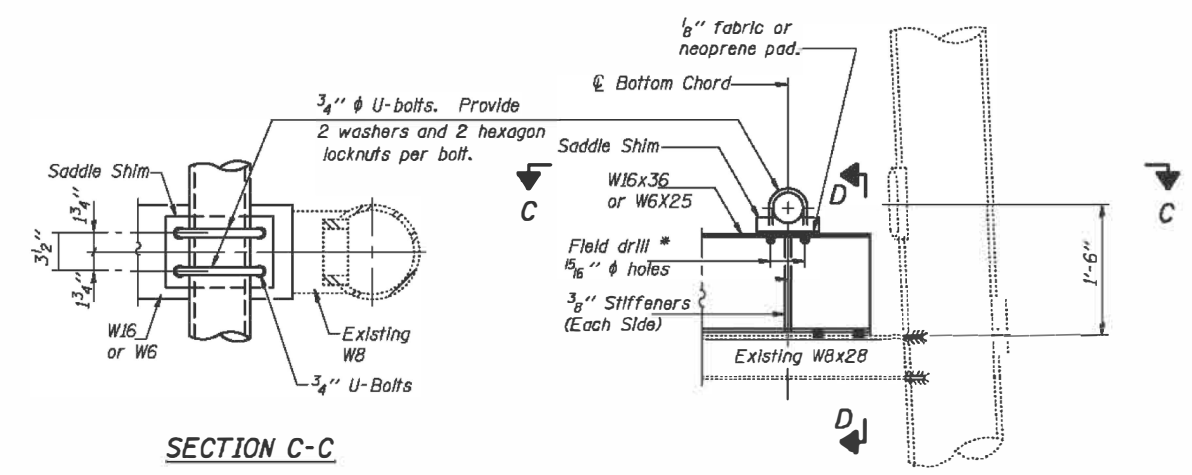
PRINTED BY THE AUTHORITY
OF THE STATE OF ILLINOIS



SIDE VIEW

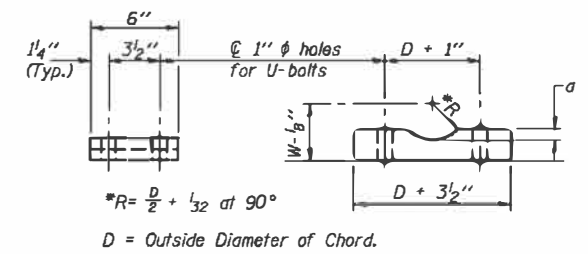


SECTION B-B



SECTION C-C

DETAIL C

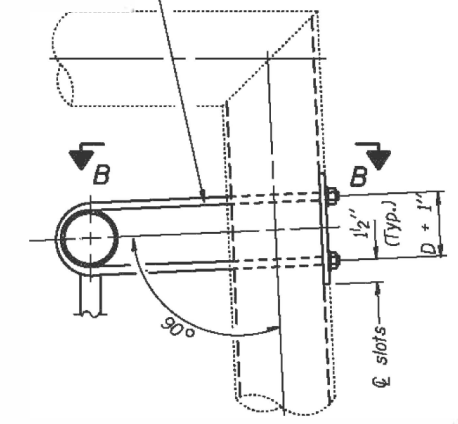


SADDLE SHIM DETAIL

ASTM B26 Alloy 356-F
or
ASTM B209 Alloy 6061-T651
(4 required per sign truss)

Truss Chord Nominal Dia.	a	W
5 1/2"	13/16"	4 3/4"
6"	7/8"	4 3/4"
6 1/2"	15/16"	4 3/4"
7"	1"	5 1/2"
8 1/2"	1 1/4"	5 1/2"
9"	1 3/8"	5 1/2"

3/4" stainless steel U-bolt. Provide two washers and two hexagon locknuts. Field drill 13/16" holes through pipe. (4 holes required per pipe)



DETAIL A

OS-A-12-Retrofit

FILE NAME =	USER NAME = michael.olson	DESIGNED =	REVISED =
		DRAWN =	REVISED =
		CHECKED =	REVISED =
		DATE =	REVISED =

**STATE OF ILLINOIS
DEPARTMENT OF TRANSPORTATION**

SCALE: _____	SHEET NO. 1 OF 1 SHEET	STA. _____ TO STA. _____	F.A. RTE. _____	SECTION _____	COUNTY _____	TOTAL SHEETS _____	SHEET NO. _____	
			VAR REGION 2 & 3 SIGN MAINTENANC 23-2	VARIOUS	VARIOUS	62A	62A	
			ILLINOIS FED. AID PROJECT				CONTRACT NO. 46602	