

STATE OF ILLINOIS
DEPARTMENT OF TRANSPORTATION
DIVISION OF HIGHWAYS
PROPOSED
HIGHWAY PLANS

FAI ROUTE 55 (I 55)
SECTION D6 SPRING RD REPAIR 2014-2

MILL, RESURFACE
LOGAN/SANGAMON COUNTY

C-96-073-14

F.A.I. RTE. 55	SECTION *	COUNTY **	TOTAL SHEETS 19	SHEET NO. 1
		ILLINOIS	CONTRACT NO. 72H02	

* D6 SPRING ROAD REPAIR 2014-2
 ** LOGAN/SANGAMON COUNTIES

INDEX OF SHEETS

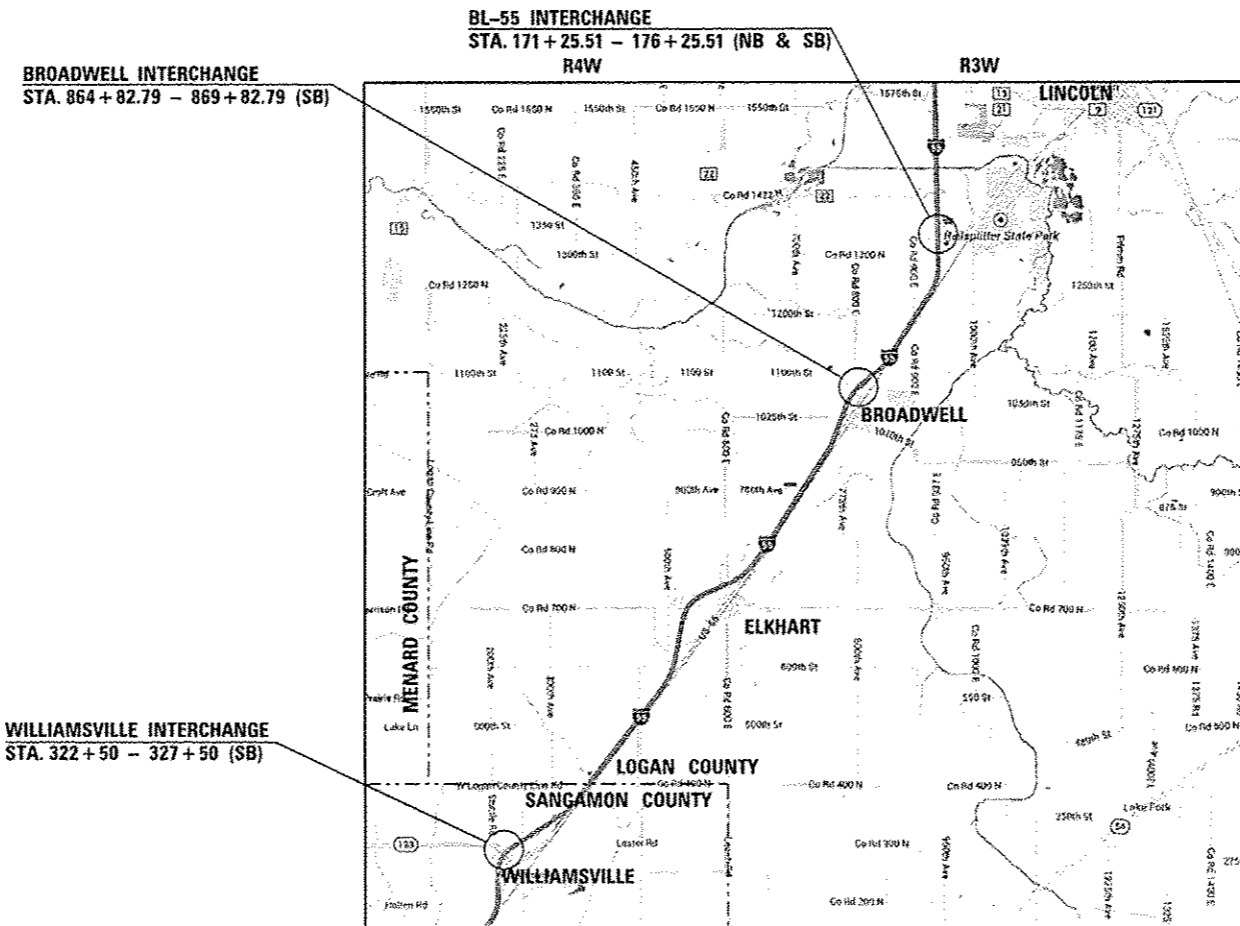
1. COVER SHEET
2. GENERAL NOTES, COMMITMENTS & STANDARDS
3. PROJECT LOCATIONS
4. - 5. SUMMARY OF QUANTITIES
6. - 7. TYPICAL SECTIONS
8. - 10. PLAN SHEETS

WILLIAMSVILLE
 ADT (2013) = 29,900
 PV = 68%
 SU = 8.7%
 MU = 22.4%

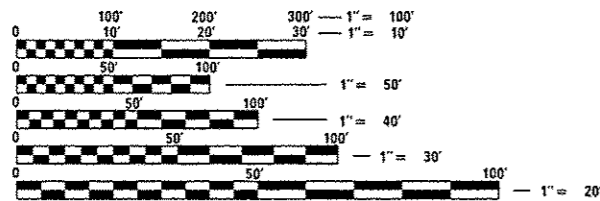
BROADWELL
 ADT (2013) = 29,900
 PV = 76.0%
 SU = 3.3%
 MU = 20.7%

BL-55
 ADT (2013) = 29,900
 PV = 76.2%
 SU = 3.1%
 MU = 20.7%

D-96-073-14



SEE SHEET NO. 3 FOR EXPANDED VIEW OF PROJECT LOCATIONS



FULL SIZE PLANS HAVE BEEN PREPARED USING STANDARD ENGINEERING SCALES. REDUCED SIZED PLANS WILL NOT CONFORM TO STANDARD SCALES. IN MAKING MEASUREMENTS ON REDUCED PLANS, THE ABOVE SCALES MAY BE USED.

J.U.I.E.
 JOINT UTILITY LOCATION INFORMATION FOR EXCAVATION
 1-800-892-0123
 OR 811

PROJECT ENGINEER: VINCENT J. MADONIA (217) 785-9046
PROJECT MANAGER: VICTOR T. YOUNG (217) 524-0472

GROSS LENGTH = 1500 FT. = 0.28 MILE
 NET LENGTH = 1500 FT. = 0.28 MILE

CONTRACT NO. 72H02

STATE OF ILLINOIS
 DEPARTMENT OF TRANSPORTATION
 DIVISION OF HIGHWAYS

SUBMITTED April 17 20 14

Roger Z. Druhal
 DEPUTY DIRECTOR OF HIGHWAYS, REGION ENGINEER

May 9 20 14
John D. Baranzelli, P.E.
 ENGINEER OF DESIGN AND ENVIRONMENT

May 9 20 14
Omor Osman, P.E.
 DIRECTOR OF HIGHWAYS, CHIEF ENGINEER

PRINTED BY THE AUTHORITY OF THE STATE OF ILLINOIS