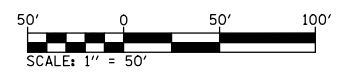
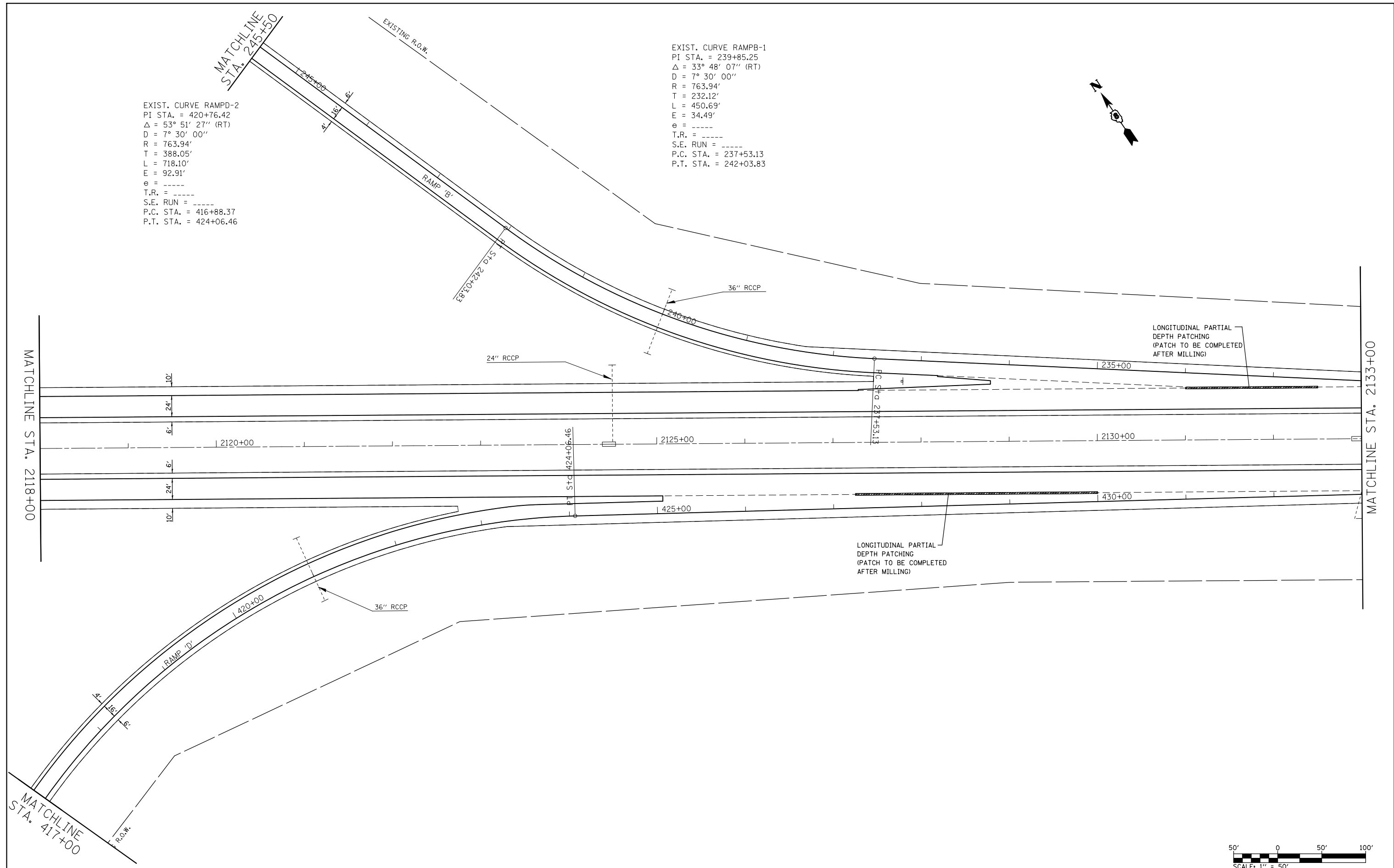
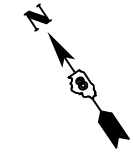


EXIST. CURVE RAMPD-2
 PI STA. = 420+76.42
 $\Delta = 53^\circ 51' 27''$ (RT)
 $D = 7^\circ 30' 00''$
 $R = 763.94'$
 $T = 388.05'$
 $L = 718.10'$
 $E = 92.91'$
 $e = \text{-----}$
 $T.R. = \text{-----}$
 $S.E. \text{ RUN} = \text{-----}$
 $P.C. \text{ STA.} = 416+88.37$
 $P.T. \text{ STA.} = 424+06.46$

EXIST. CURVE RAMPB-1
 PI STA. = 239+85.25
 $\Delta = 33^\circ 48' 07''$ (RT)
 $D = 7^\circ 30' 00''$
 $R = 763.94'$
 $T = 232.12'$
 $L = 450.69'$
 $E = 34.49'$
 $e = \text{-----}$
 $T.R. = \text{-----}$
 $S.E. \text{ RUN} = \text{-----}$
 $P.C. \text{ STA.} = 237+53.13$
 $P.T. \text{ STA.} = 242+03.83$



FILE NAME =	USER NAME = conoverpj	DESIGNED -	REVISED -
et:\pwork\pwork\conoverpj\d0145718\d876d20-sh1-plan.dgn		DRAWN -	REVISED -
	PLOT SCALE = 100.0000' / in.	CHECKED -	REVISED -
	PLOT DATE = 6/13/2014	DATE -	REVISED -

**STATE OF ILLINOIS
 DEPARTMENT OF TRANSPORTATION**

PLAN SHEETS

SCALE: 1" = 50' SHEET NO. 16 OF 33 SHEETS STA. 2118+00 TO STA. 2133+00

F.A.I. RTE.	SECTION	COUNTY	TOTAL SHEETS	SHEET NO.
64	95-1,2 RS-1	WASHINGTON	126	41
CONTRACT NO. 76D20				
FED. ROAD DIST. NO.		ILLINOIS FED. AID PROJECT		