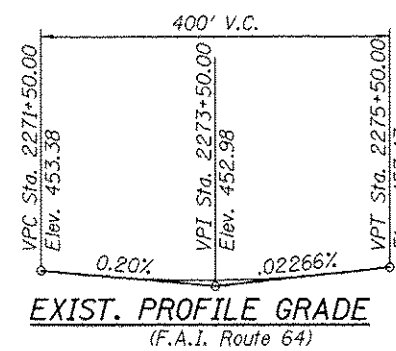
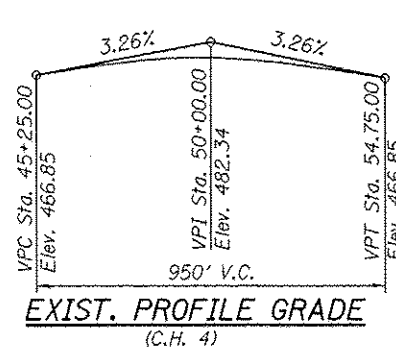


Existing Structure: S.M. 095-0036 built in 1969 as County Highway 4 over F.A.I. Route 64, Sec. 95-2HB at Sta. 2273+56.75. Existing structure consist of two span 48" web, continuous steel plate girder bridge, (90'-90') with 36' approach spans on 36" P.P.C. I-beams. The back to back of approach span length is 253'-6" and the out to out bridge width is 30'-0" with no skew. Vaulted abutments, approach bents and hammerhead pier bear on footings supported by steel H-Piles.

Structure improvements include scarification of deck and approaches, application of microsilica overlay, replacement of vaulted abutment doors and the installation of polymer concrete nosing, silicone joint sealer at expansion joints and abutment angle bumpers.

One lane of traffic in each direction is to be maintained during construction using staged construction..

No salvage.



TOTAL BILL OF MATERIAL

ITEM	UNIT	TOTAL
Bridge Deck Grooving	Sq. Yd.	690
Access Door	Each	2
Structural Steel Repair	Pound	790
Bridge Deck Scarification, 3/4"	Sq. Yd.	746
Bridge Deck Microsilica Concrete Overlay, 2 1/2"	Sq. Yd.	746
Silicone Joint Sealer, 1.5"	Foot	60
Polymer Concrete	Cu. Ft.	8

SCOPE OF WORK

Structure improvements include scarifying the deck and approaches, installing a microsilica overlay, replacing vaulted abutment doors, modifying existing expansion joints for the installation of and silicone joint sealer and installing abutment angle bumpers.

GENERAL NOTES:

Plan dimensions and details relative to existing plans are subject to nominal construction variations. The Contractor shall field verify existing dimensions and details affecting new construction and make necessary approved adjustments prior to construction or ordering of materials. Such variations shall not be cause for additional compensation for a change in scope of the work, however, the Contractor will be paid for the quantity actually furnished at the unit price bid for the work.

The existing structural steel coating contains lead. The Contractor shall take appropriate precautions to deal with the presence of lead on this project.

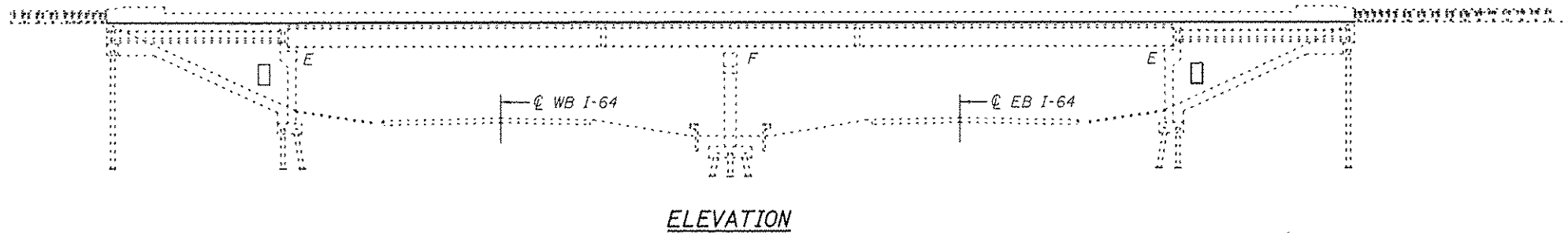
Existing structural steel that will be in contact with new structural steel shall be cleaned and painted prior to erection as required by the Special Provision "Cleaning and Painting Contact Surface Areas of Existing Steel Structures". Cost Included with Structural Steel Repair.

Existing structural steel shall only be cleaned and painted as required by the Special Provision "Cleaning and Painting Adjacent Areas of Existing Steel Structures".

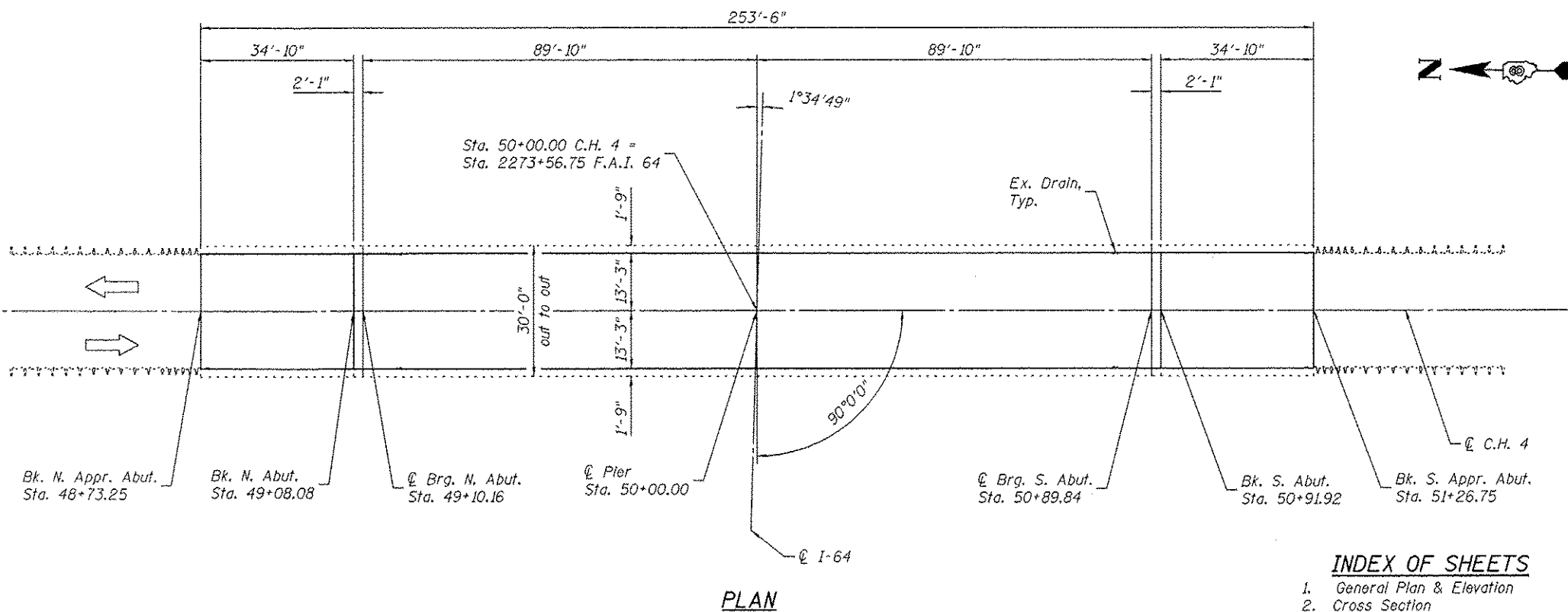
All structural steel shall be shop painted with inorganic zinc primer per AASHTO M 300, Type 1. Cost Included with Structural Steel Repair.

The Inorganic Zinc Rich Primer / Acrylic / Acrylic Paint System shall be used for shop and field painting of new structural steel except where otherwise noted. The color of the final finish coat for all interior steel surfaces shall be Gray, Munsell No. 5B 7/1. The color of the final finish coat for the exterior and bottom flange of the fascia beams shall be Gray, Munsell No. 5B 7/1. See Special Provision "Cleaning and Painting New Metal Structures". Cost included with Structural Steel Repair.

Fasteners shall be high strength bolts. Bolts 3/4" φ, open holes 13/16" φ, unless otherwise noted.



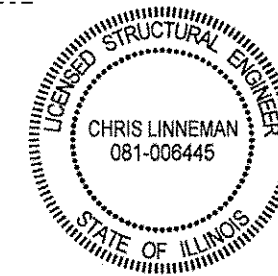
ELEVATION



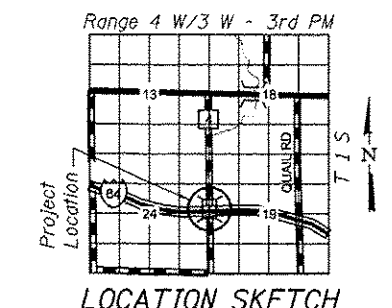
PLAN

INDEX OF SHEETS

1. General Plan & Elevation
2. Cross Section
3. Details
4. Details



Signed: *[Signature]*
Date: 6/11/2014
License Expires: 11/30/2014



GENERAL PLAN & ELEVATION
CH 4 OVER F.A.I. 64
F.A.I. 64 - SECTION 95-(1,2)RS-1
WASHINGTON COUNTY
STA. 2273+56.75
STRUCTURE NO. 095-0036

PRINT DATE: 6/11/2014 2:03:50 PM Y:\2014\1-64 Bridge Repairs\DWG\Bridges\Final\Plot\sheet\095-0036-0000036-00000-001-GPE.dgn

EFK•Moen, LLC
Civil Engineering Design
303 Fountains Parkway, Suite 240
Fairview Heights, IL 62208
Phone 618-296-4250

USER NAME = cdl	DESIGNED - CDL	REVISED -
	CHECKED - CTW	REVISED -
PLOT SCALE = 0/2 '1' / 1"	DRAWN - JA	REVISED -
PLOT DATE = 6/11/2014	DATE - 6/11/2014	REVISED -

STATE OF ILLINOIS
DEPARTMENT OF TRANSPORTATION

GENERAL PLAN & ELEVATION
STRUCTURE NO. 095-0036

F.A.I. RTE.	SECTION	COUNTY	TOTAL SHEETS	SHEET NO.
64	95-(1,2)RS-1	WASHINGTON	126	92
			CONTRACT NO. 76D20	
ILLINOIS FED. AID PROJECT				