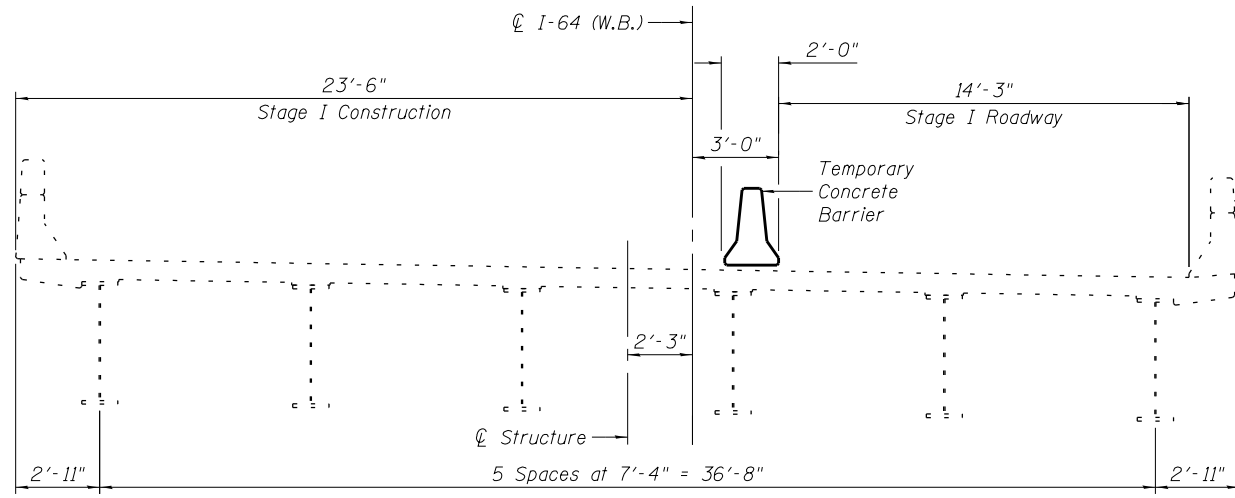
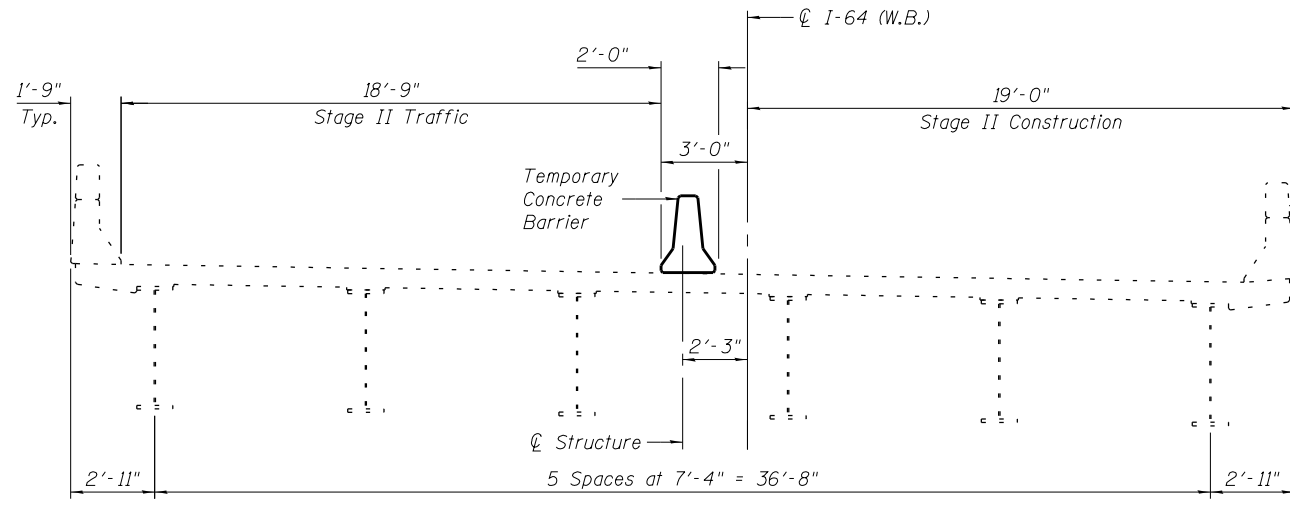
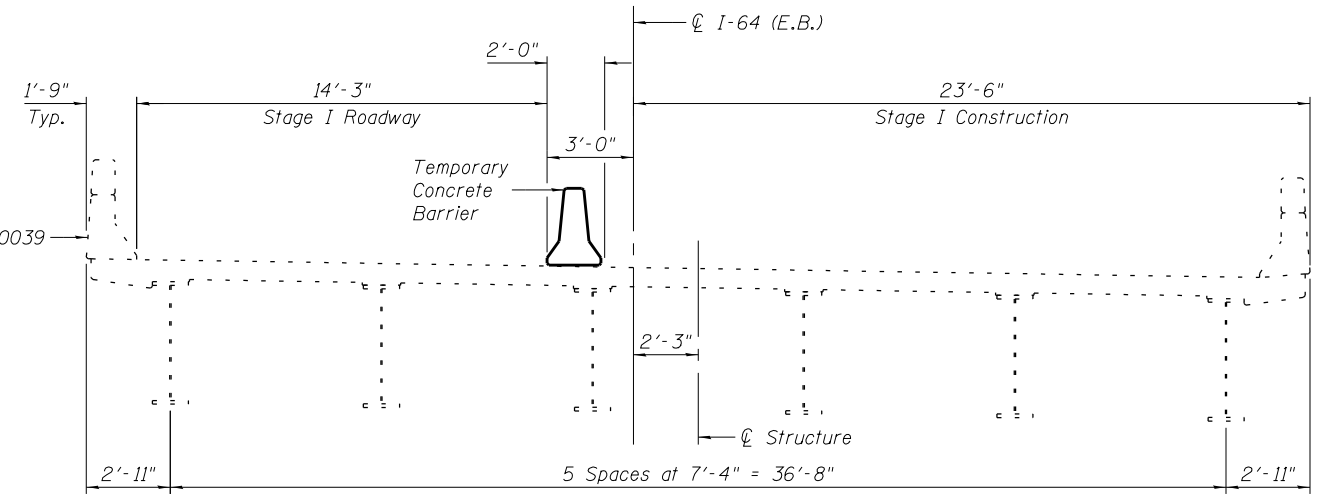


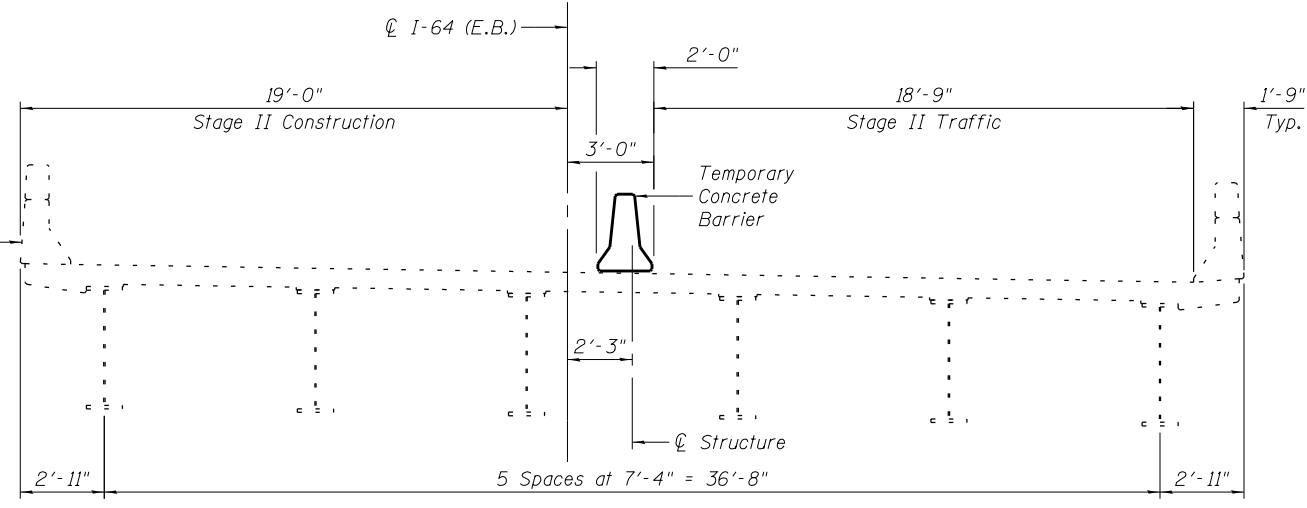
PRINT DATE: 6/11/2014 2:29:48 PM Y:\2014\I-64 Bridge Repair\DCN\Bridg\Final\Plotsheets\095-0039\_0040\0950039-0000-002-Staging Plan.dgn



**STAGE I**  
(Looking East)



**STAGE II**  
(Looking East)



**EFK•Moen, LLC**  
 Civil Engineering Design  
 303 Fountains Parkway, Suite 240  
 Fairview Heights, IL 62208  
 Phone 618-206-4250

USER NAME = cdl	DESIGNED - CDL	REVISED -
	CHECKED - CTW	REVISED -
PLOT SCALE = 0.2" = 1' - 0"	DRAWN - JA	REVISED -
PLOT DATE = 6/11/2014	DATE - 6/11/2014	REVISED -

**STATE OF ILLINOIS**  
**DEPARTMENT OF TRANSPORTATION**

**STAGING PLAN**  
**STRUCTURE NO. 095-0039 & 095-0040**

SHEET NO. 2 OF 6 SHEETS

F.A.I. RTE.	SECTION	COUNTY	TOTAL SHEETS	SHEET NO.
64	95-1,21RS-1	WASHINGTON	126	98
CONTRACT NO. 76D20				
ILLINOIS FED. AID PROJECT				