

CODE NO.	ITEM	UNIT	VILLAGE OF RIVERDALE 0028	FPDCC 0028	TOTAL QUANTITY 0028
20100110	TREE REMOVAL (6 TO 15 UNITS DIAMETER)	UNIT	62	0	62
20101000	TEMPORARY FENCE	FOOT	120	0	120
20200100	EARTH EXCAVATION	CU YD	56	7	63
20201200	REMOVAL AND DISPOSAL OF UNSUITABLE MATERIAL	CU YD	950	185	1,135
20400800	FURNISHED EXCAVATION	CU YD	252	20	272
21001000	GEOTECHNICAL FABRIC FOR GROUND STABILIZATION	SQ YD	2,489	579	3,068
21101625	TOPSOIL FURNISH AND PLACE, 6"	SQ YD	852	282	1,134
* 25000115	SEEDING, CLASS 1B	ACRE	0.2	0.1	0.3
* 25000400	NITROGEN FERTILIZER NUTRIENT	POUND	18	9	27
* 25000600	POTASSIUM FERTILIZER NUTRIENT	POUND	18	9	27
* 25100115	MULCH, METHOD 2	ACRE	0.2	0.1	0.3
* 25100630	EROSION CONTROL BLANKET	SQ YD	852	282	1,134
* 25200200	SUPPLEMENTAL WATERING	UNIT	9	3	12
28000250	TEMPORARY EROSION CONTROL SEEDING	POUND	20	10	30
28000400	PERIMETER EROSION BARRIER	FOOT	1,937	877	2,814
30300001	AGGREGATE SUBGRADE IMPROVEMENT	CU YD	142	28	170
35101600	AGGREGATE BASE COURSE, TYPE B 4"	SQ YD	315	31	346
35102000	AGGREGATE BASE COURSE, TYPE B 8"	SQ YD	1,812	457	2,269
40600275	BITUMINOUS MATERIALS (PRIME COAT)	POUND	4,076	1,029	5,105
40600290	BITUMINOUS MATERIALS (TACK COAT)	POUND	105	0	105
40600625	LEVELING BINDER (MACHINE METHOD), N50	TON	4	0	4
40603335	HOT-MIX ASPHALT SURFACE COURSE, MIX "D", N50	TON	223	51	274
42001300	PROTECTIVE COAT	SQ YD	432	34	466

CODE NO.	ITEM	UNIT	VILLAGE OF RIVERDALE 0028	FPDCC 0028	TOTAL QUANTITY 0028
42400300	PORTLAND CEMENT CONCRETE SIDEWALK 6 INCH	SQ FT	3,161	236	3,397
42400800	DETECTABLE WARNINGS	SQ FT	454	40	494
44000100	PAVEMENT REMOVAL	SQ YD	26	0	26
44000500	COMBINATION CURB AND GUTTER REMOVAL	FOOT	51	0	51
44000600	SIDEWALK REMOVAL	SQ FT	1,000	0	1,000
60250400	CATCH BASINS TO BE ADJUSTED WITH NEW TYPE 1 FRAME, OPEN LID	EACH	1	0	1
60255500	MANHOLES TO BE ADJUSTED	EACH	6	0	6
60603800	COMBINATION CONCRETE CURB AND GUTTER, TYPE B-6.12	FOOT	22	0	22
* 66900200	NON-SPECIAL WASTE DISPOSAL	CU YD	105	0	105
* 66900450	SPECIAL WASTE PLANS AND REPORTS	LSUM	1	0	1
* 66900530	SOIL DISPOSAL ANALYSIS	EACH	2	0	2
67000500	ENGINEER'S FIELD OFFICE, TYPE B	CAL MO	12	0	12
67100100	MOBILIZATION	L SUM	0.7	0.3	1
70102620	TRAFFIC CONTROL AND PROTECTION, STANDARD 701501	LSUM	1	0	1
70102630	TRAFFIC CONTROL AND PROTECTION, STANDARD 701601	L SUM	1	0	1
70102635	TRAFFIC CONTROL AND PROTECTION, STANDARD 701701	L SUM	0.8	0.2	1
70102640	TRAFFIC CONTROL AND PROTECTION, STANDARD 701801	L SUM	1	0	1
70103815	TRAFFIC CONTROL SURVEILLANCE	CAL DA	20	0	20
* 72000100	SIGN PANEL - TYPE 1	SQ FT	613	24	637
* 72400310	REMOVE SIGN PANEL - TYPE 1	SQ FT	11	0	11
* 72400500	RELOCATE SIGN PANEL ASSEMBLY - TYPE A	EACH	6	0	6
* 72400600	RELOCATE SIGN PANEL ASSEMBLY - TYPE B	EACH	2	0	2
* 72900100	METAL POST - TYPE A	FOOT	449	10	459
* 72900200	METAL POST - TYPE B	FOOT	1,048	30	1,078

* = SPECIALTY ITEMS

FILE NAME = P:\Blue Island_25367145_Cal-Sag Trail\Phase 2\Roadway\Riverdale\General\500_Cal-Sag_Riverdale.dgn



USER NAME = ken_moy	DESIGNED - KLM	REVISED - AUGUST 30, 2016
PLOT SCALE = 1/4" = 1'-0"	DRAWN - KLM	REVISED -
PLOT DATE = 5/25/2016 9:46:26 AM	CHECKED - BMC	REVISED -
	DATE - MAY 23, 2016	REVISED -

STATE OF ILLINOIS
DEPARTMENT OF TRANSPORTATION

CAL-SAG GREENWAY TRAIL (RIVERDALE SEGMENT)
SUMMARY OF QUANTITIES

SHEET NO. 1 OF 3 SHEETS STA. TO STA.

F.A.P. RTE.	SECTION	COUNTY	TOTAL SHEETS	SHEET NO.
	15-00131-00-BT	COOK	51	3
CONTRACT NO. 61C73				
FED. ROAD DIST. NO. 1 ILLINOIS FED. AID PROJECT				

CODE NO.	ITEM	UNIT	VILLAGE OF RIVERDALE 0028	FPDCC 0028	TOTAL QUANTITY 0028
* 78000100	THERMOPLASTIC PAVEMENT MARKING - LETTERS AND SYMBOLS	SQ FT	757	0	757
* 78000200	THERMOPLASTIC PAVEMENT MARKING - LINE 4"	FOOT	4,091	0	4,091
* 78000400	THERMOPLASTIC PAVEMENT MARKING - LINE 6"	FOOT	741	165	906
* 78000500	THERMOPLASTIC PAVEMENT MARKING - LINE 8"	FOOT	473	0	473
* 78000600	THERMOPLASTIC PAVEMENT MARKING - LINE 12"	FOOT	1,248	402	1,650
* 78000650	THERMOPLASTIC PAVEMENT MARKING - LINE 24"	FOOT	98	0	98
* 78001110	PAINT PAVEMENT MARKING - LINE 4"	FOOT	1,790	428	2,218
* 78001150	PAINT PAVEMENT MARKING - LINE 12"	FOOT	80	10	90
* 78008200	POLYUREA PAVEMENT MARKING TYPE I - LETTERS AND SYMBOLS	SQ FT	310	0	310
* 78008210	POLYUREA PAVEMENT MARKING TYPE I - LINE 4"	FOOT	7,207	0	7,207
* 78008230	POLYUREA PAVEMENT MARKING TYPE I - LINE 6"	FOOT	248	0	248
* 78008240	POLYUREA PAVEMENT MARKING TYPE I - LINE 8"	FOOT	533	0	533
* 78008250	POLYUREA PAVEMENT MARKING TYPE I - LINE 12"	FOOT	1,005	0	1,005
* 81028210	UNDERGROUND CONDUIT, GALVANIZED STEEL, 2 1/2" DIA.	FOOT	30	10	40
* 85000200	MAINTENANCE OF EXISTING TRAFFIC SIGNAL INSTALLATION	EACH	0.5	0.5	1
* 87301215	ELECTRIC CABLE IN CONDUIT, SIGNAL NO. 14 2C	FOOT	818	0	818
* 87301225	ELECTRIC CABLE IN CONDUIT, SIGNAL NO. 14 3C	FOOT	846	0	846
* 87500600	TRAFFIC SIGNAL POST, 10 FT.	EACH	2	1	3
* 87800100	CONCRETE FOUNDATION, TYPE A	FOOT	8	4	12
* 87900200	DRILL EXISTING HANDHOLE	EACH	2	1	3
* 88102717	PEDESTRIAN SIGNAL HEAD, LED, 1-FACE, BRACKET MOUNTED WITH COUNTDOWN TIMER	EACH	3	1	4
* 88800100	PEDESTRIAN PUSH BUTTON	EACH	3	1	4
* 89502200	MODIFY EXISTING CONTROLLER	EACH	0.5	0.5	1
* 89502376	REBUILD EXISTING HANDHOLE	EACH	1	1	2

CODE NO.	ITEM	UNIT	VILLAGE OF RIVERDALE 0028	FPDCC 0028	TOTAL QUANTITY 0028
* A2002916	TREE, CELTIS OCCIDENTALIS (COMMON HACKBERRY), 2" CALIPER, BALLED AND BURLAPPED	EACH	4	0	4
* A2006514	TREE, QUERCUS BICOLOR (SWAMP WHITE OAK), 1-3/4" CALIPER, BALLED AND BURLAPPED	EACH	4	0	4
* B2001616	TREE, CRATAEGUS CRUSGALLI INERMIS (THORN LESS COCKSPUR HAWTHORN), 2" CALIPER, TREE FORM, BALLED AND BURLAPPED	EACH	4	0	4
* K1005863	TREE ROOT PRUNING	EACH	3	0	3
X0321322	DROP GATE	EACH	0	1	1
* X2010400	STUMP REMOVAL ONLY	UNIT	22	0	22
* X0327979	PAVEMENT MARKING REMOVAL - GRINDING	SQ FT	192	0	192
X4401198	HOT-MIX ASPHALT SURFACE REMOVAL, VARIABLE DEPTH	SQ YD	90	0	90
* XX005642	GATEWAY MONUMENT SIGN COMPLETE	EACH	2	0	2
* XX007399	MONUMENT TYPE A FOUNDATION	EACH	12	1	13
* XX008268	DECORATIVE GATEWAY ELEMENT	EACH	1	0	1
* XX008600	DECORATIVE SIGN AND POST (DIRECT POST)	EACH	12	1	13
* XX008910	PAVEMENT MARKING (SPECIAL)	SQ FT	3,026	0	3,026
XX009026	BENCH REMOVAL	EACH	1	0	1
Z0013798	CONSTRUCTION LAYOUT	LSUM	1	0	1
Z0022800	FENCE REMOVAL	FOOT	50	0	50
Z0004562	COMBINATION CONCRETE CURB AND GUTTER REMOVAL AND REPLACEMENT	FOOT	271	14	285
Z0042300	PORTLAND CEMENT CONCRETE SIDEWALK CURB	FOOT	346	50	396

* = SPECIALTY ITEMS

FILE NAME = P:\Blue Island\25367145_Col-Sag Trail\Phase 2\Roadway\Riverdale\General\SD0_Col-Sag-Riverdale.dgn



USER NAME = ken_moj	DESIGNED - KLM	REVISED - <u>AUGUST 30, 2016</u>
PLOT SCALE = 1/4" = 1'-0"	DRAWN - KLM	REVISED -
PLOT DATE = 5/25/2016 9:47:00 AM	CHECKED - BMC	REVISED -
	DATE - MAY 23, 2016	REVISED -

STATE OF ILLINOIS
DEPARTMENT OF TRANSPORTATION

CAL-SAG GREENWAY TRAIL (RIVERDALE SEGMENT)
SUMMARY OF QUANTITIES

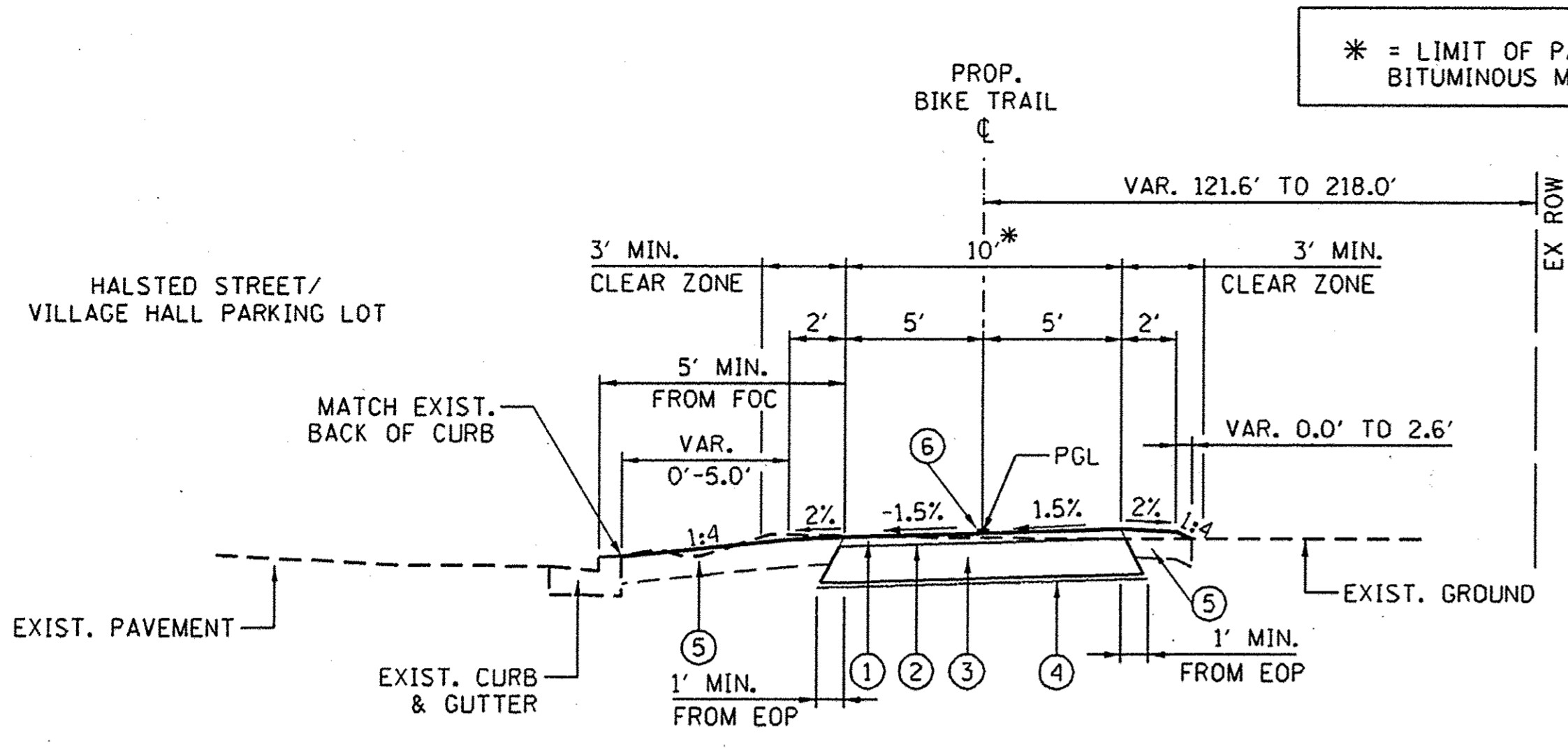
SHEET NO. 2 OF 3 SHEETS STA. TO STA.

F.A.P. RTE.	SECTION	COUNTY	TOTAL SHEETS	SHEET NO.
	15-00131-00-BT	COOK	51	4
CONTRACT NO. 61C73				
FED. ROAD DIST. NO. 1 [ILLINOIS] FED. AID PROJECT				

* = LIMIT OF PAYMENT FOR ASPHALT, BITUMINOUS MATERIAL, AND AGGREGATE BASES

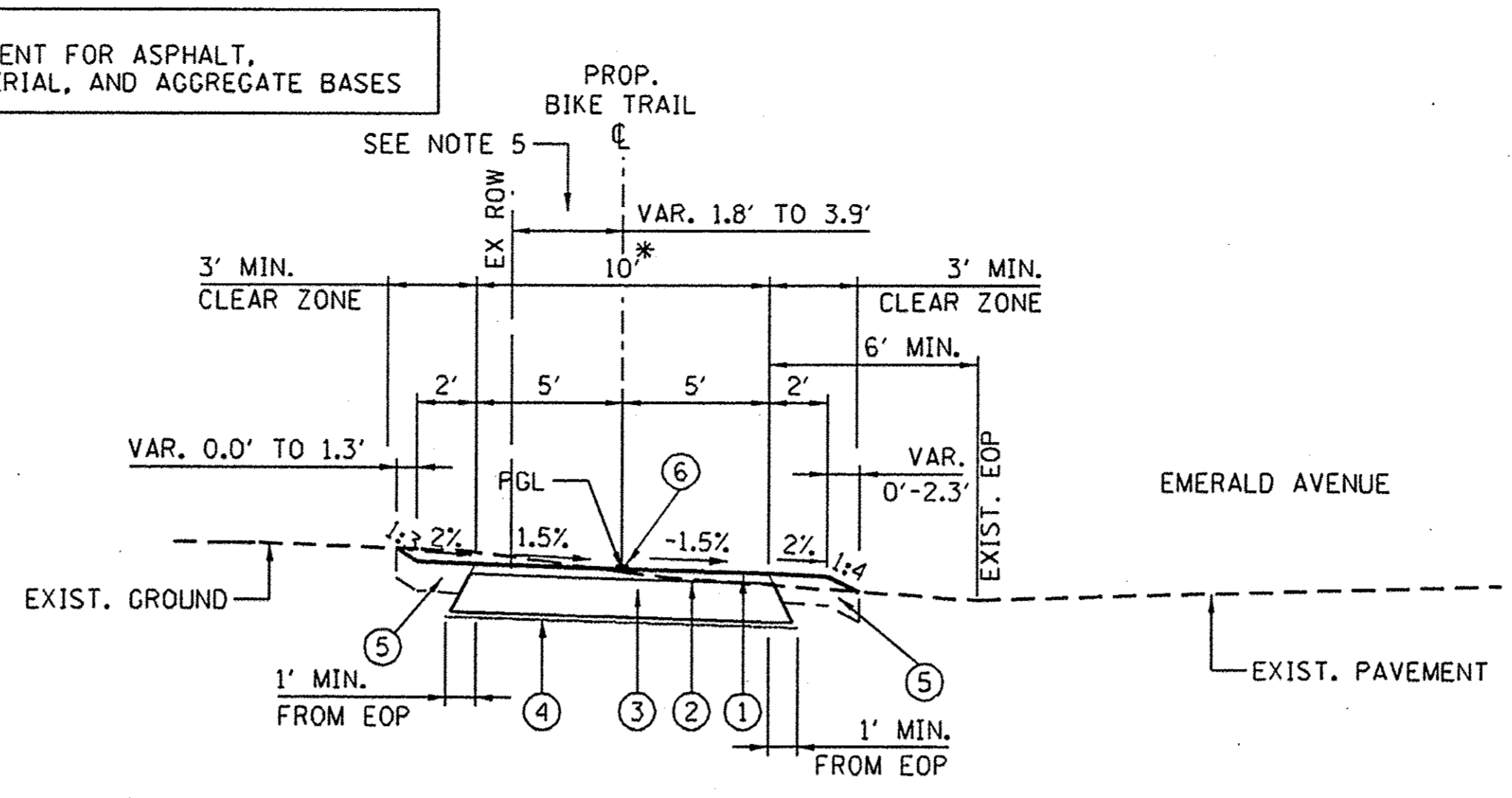
- LEGEND:**
- ① HOT-MIX ASPHALT SURFACE COURSE, MIX "D", N50, 2"
 - ② BITUMINOUS MATERIALS (PRIME COAT)
 - ③ AGGREGATE BASE COURSE, TYPE B, 8"
 - ④ GEOTECHNICAL FABRIC FOR GROUND STABILIZATION
 - ⑤ TOPSOIL FURNISH AND PLACE, 6", AND SEEDING, CLASS 1B
 - ⑥ PAINT PAVEMENT MARKING, LINE 4" YELLOW
 - ⑦ THERMOPLASTIC PAVEMENT MARKING
 - ⑧ POLYUREA PAVEMENT MARKING, TYPE I

- NOTE 1:**
WHERE UNSUITABLE MATERIAL UNDERLIES THE BIKE TRAIL, SHOULDERS AND/OR EMBANKMENT, AS DETERMINED BY THE ENGINEER, THE SUBGRADE TREATMENT WILL CONSIST OF EXCAVATION OF SUCH UNSUITABLE MATERIAL TO A DEPTH 12" BELOW AGGREGATE BASE COURSE AND PLACEMENT OF 12" OF AGGREGATE SUBGRADE IMPROVEMENT AND A GEOTECHNICAL FABRIC FOR GROUND STABILIZATION.
- NOTE 2:**
ADDITIONAL FILL MATERIAL TO BE PLACED ABOVE FABRIC IN CUT SECTIONS SHALL NOT BE MEASURED FOR PAYMENT. MATERIAL SHALL BE SUITABLE EMBANKMENT MATERIAL.
- NOTE 3:**
AT ALL INTERSECTIONS OF BIKE PATH AND ROADWAYS, DEPRESS THE CURB (IF APPLICABLE) AND MAINTAIN EXISTING PAVEMENT ELEVATIONS.
- NOTE 4:**
NO PROPOSED TYPICAL SECTION FOR "PROJECT OMISSION"
STA. 497+00.00 TO STA. 512+50.00
- NOTE 5:**
SECTION OF BIKE TRAIL WILL BE CONSTRUCTED ON VILLAGE OF RIVERDALE RIGHT-OF-WAY.



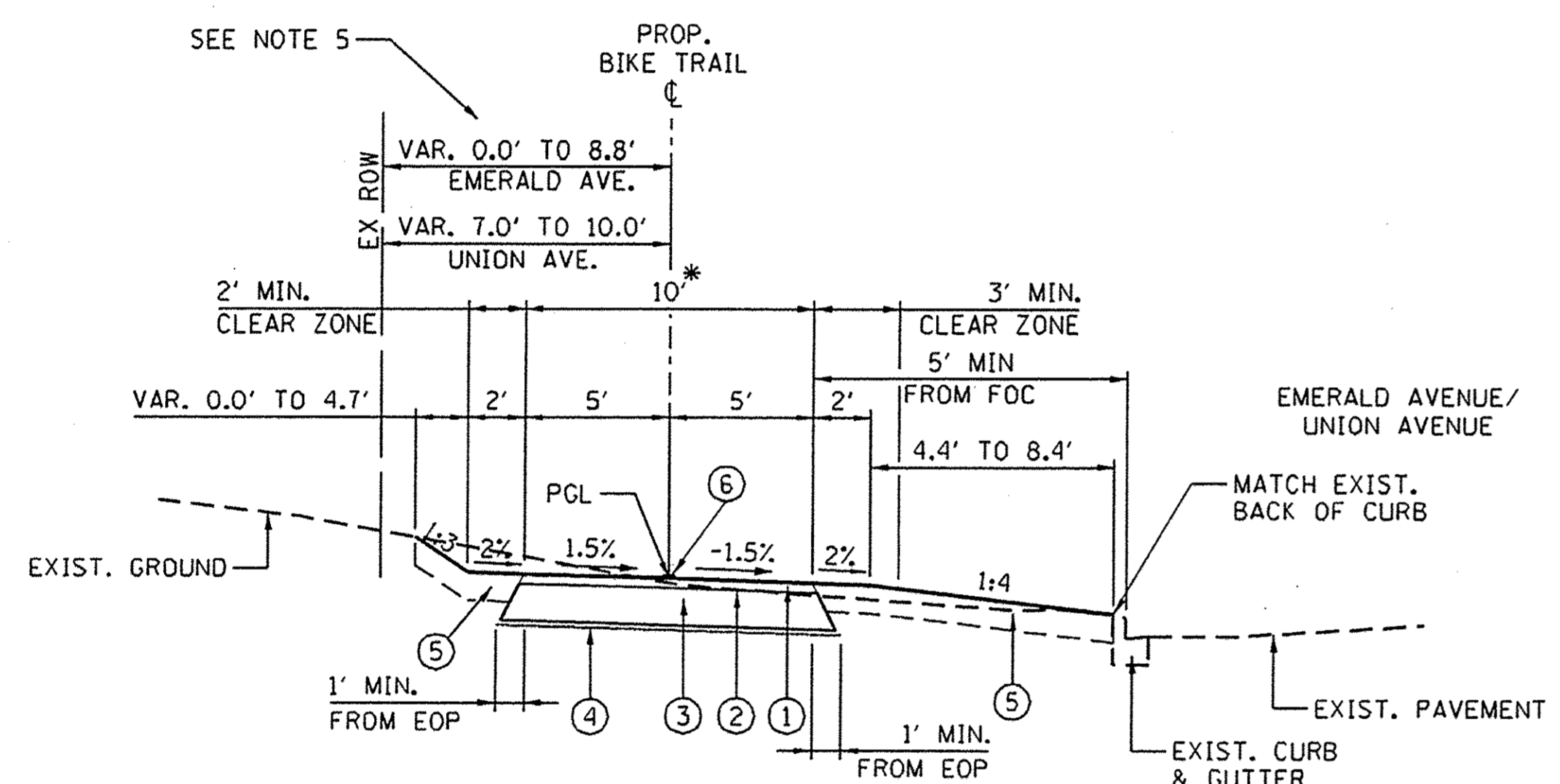
PROPOSED TYPICAL SECTION

STA. 494+43.51 TO STA. 497+00.00 (LOOKING SOUTH)
STA. 512+50.00 TO STA. 513+49.89 (LOOKING SOUTH)
STA. 529+59.41 TO STA. 529+97.51 (LOOKING SOUTH)
STA. 536+36.56 TO STA. 539+87.45 (LOOKING EAST)



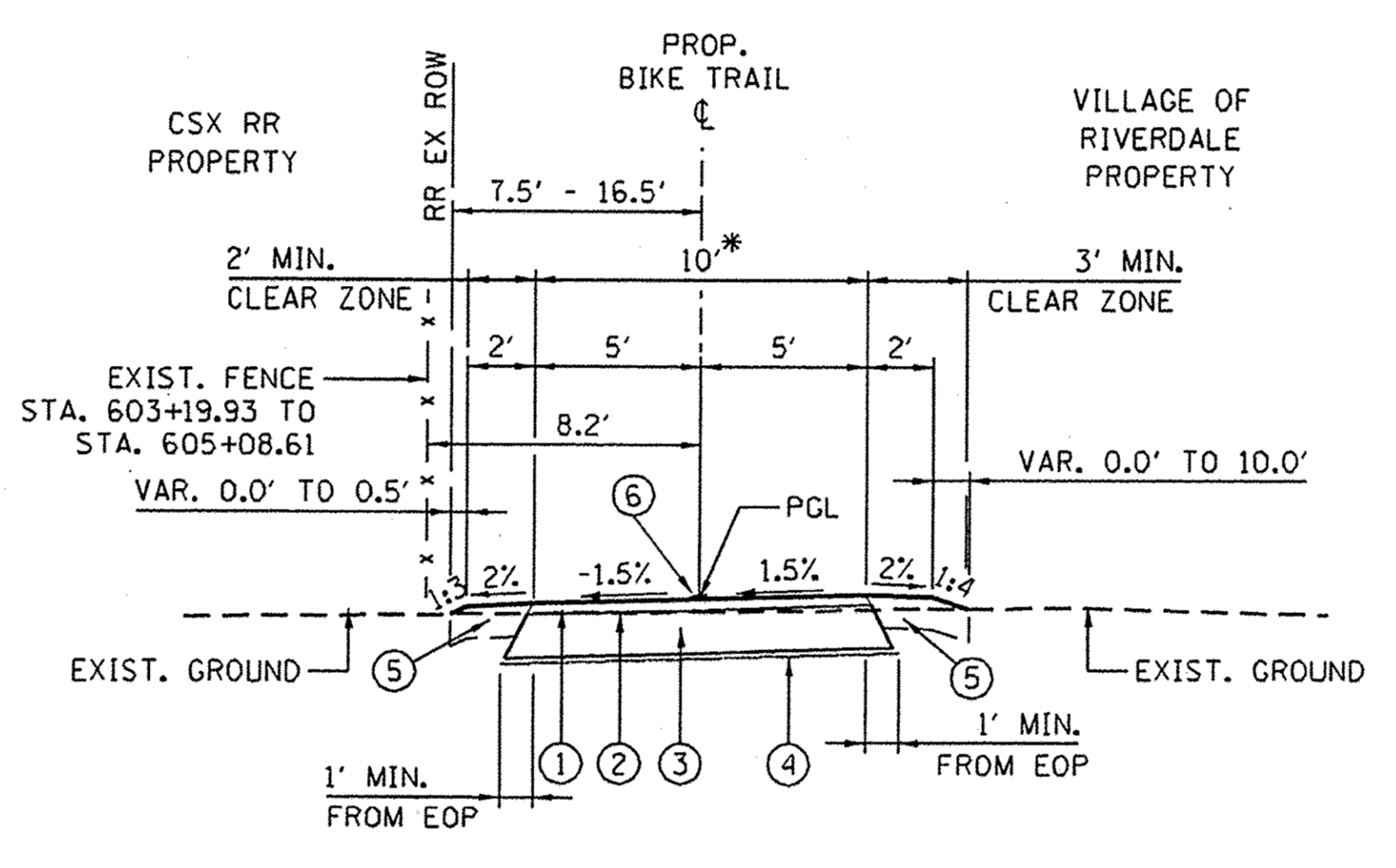
PROPOSED TYPICAL SECTION

STA. 530+21.83 TO STA. 532+34.00 (LOOKING SOUTH)



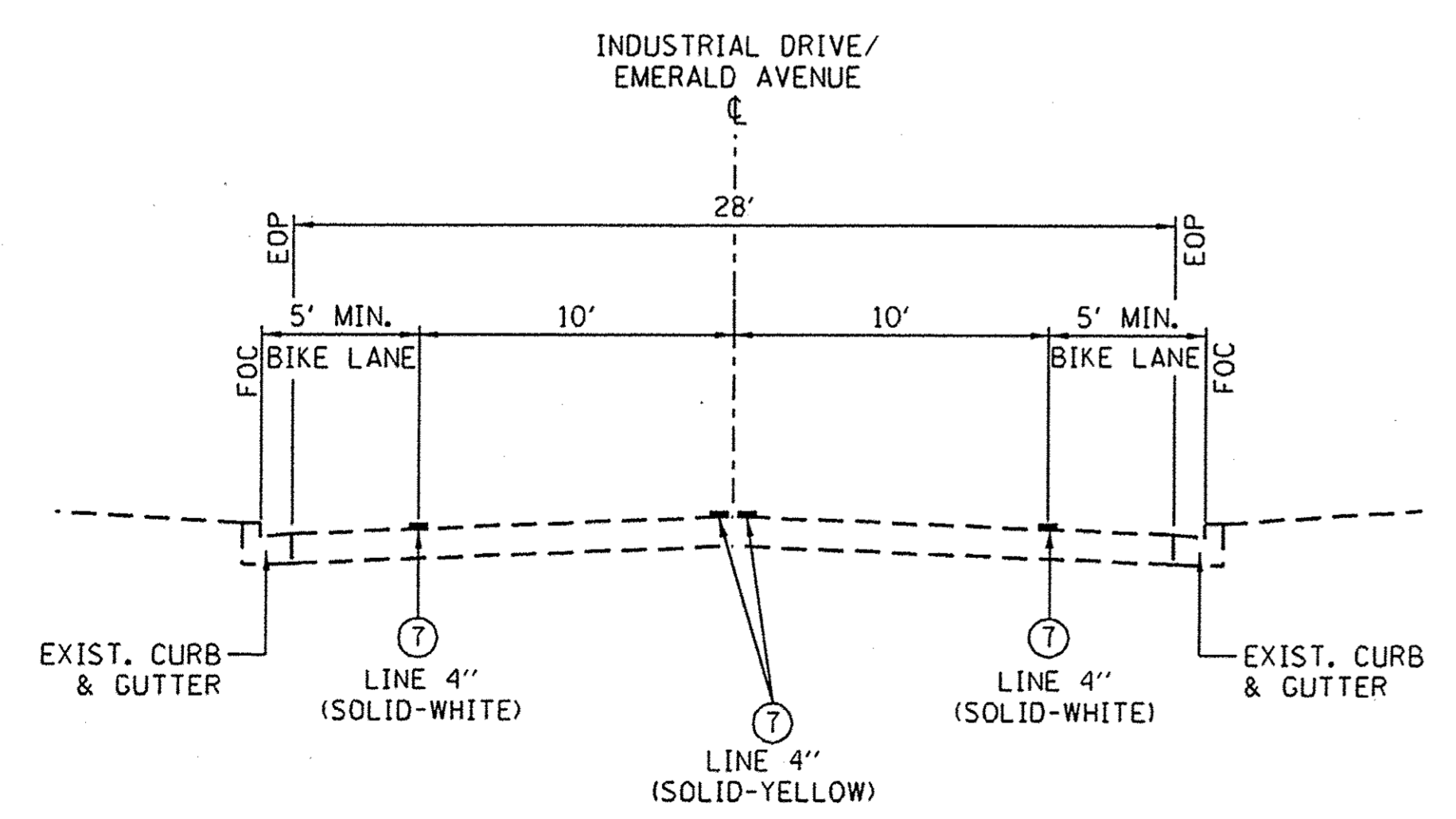
PROPOSED TYPICAL SECTION

STA. 532+65.87 TO STA. 535+38.50 (LOOKING SOUTH)
STA. 540+15.05 TO STA. 543+33.26 (LOOKING SOUTH)



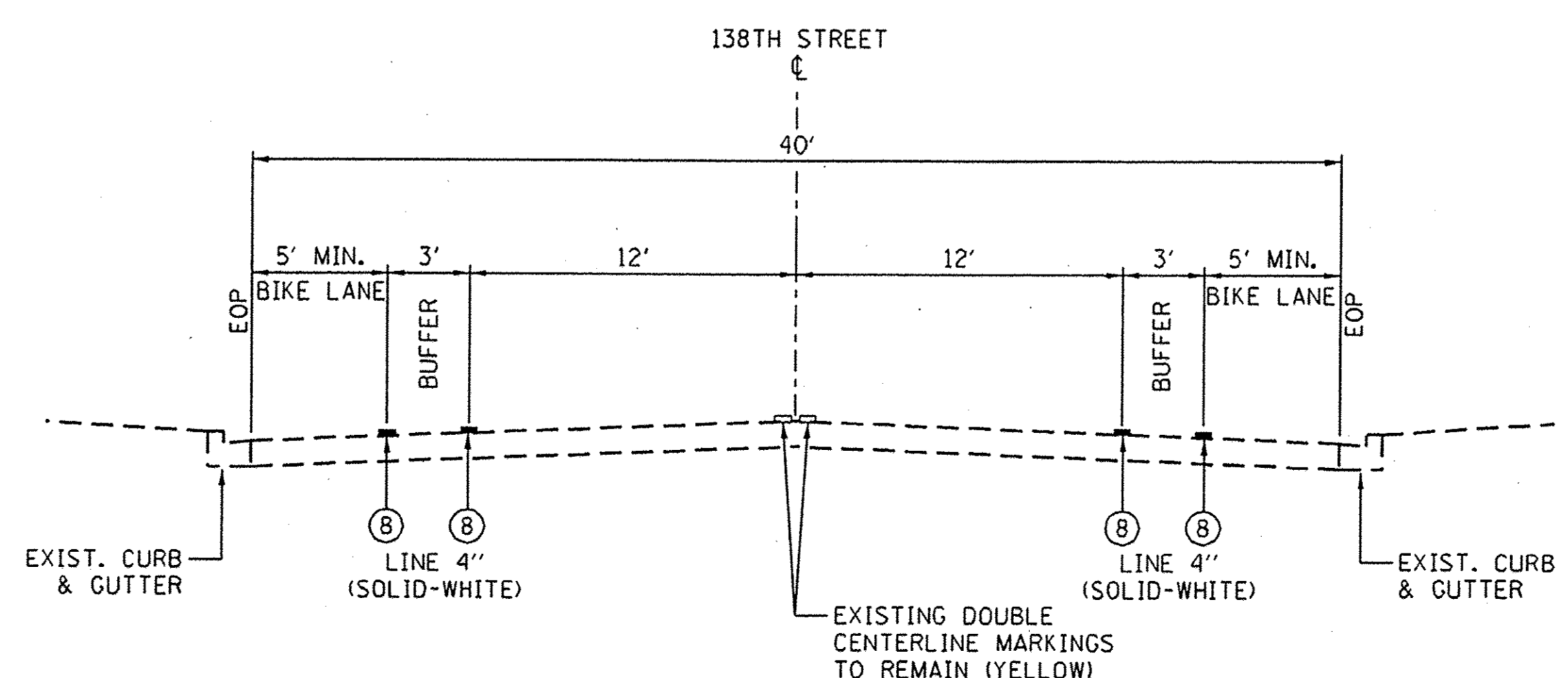
PROPOSED TYPICAL SECTION

STA. 602+89.88 TO STA. 607+16.65 (LOOKING SOUTHEAST)



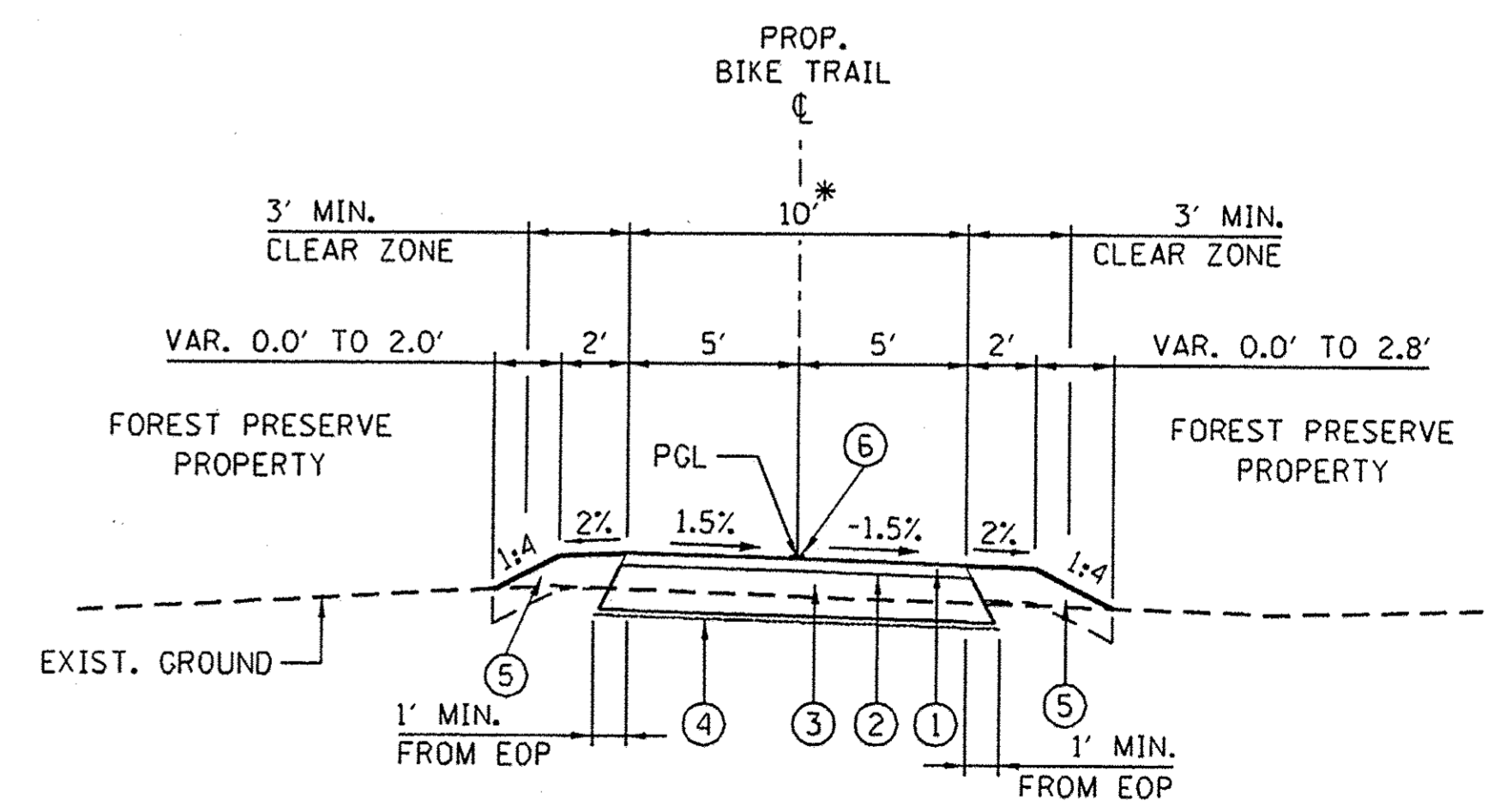
PROPOSED TYPICAL SECTION

STA. 513+86.95 TO STA. 529+59.41



PROPOSED TYPICAL SECTION

STA. 543+52.80 TO STA. 562+85.86
STA. 611+98.75 TO STA. 616+00.00



PROPOSED TYPICAL SECTION

STA. 100+95.64 TO STA. 105+33.52 (MAJOR TAYLOR SPUR - LOOKING EAST)

BITUMINOUS MIXTURE REQUIREMENTS

ITEM	VOIDS	USAGE
HOT-MIX ASPHALT SURFACE COURSE, MIX D, N50 (IL 9.5mm), 2 INCHES	4% @ 50 GYR	BIKE TRAIL SURFACE

THE UNIT WEIGHT USED TO CALCULATE ALL HMA SURFACE MIXTURES IS 112 LBS/SOYD/IN.

THE "AC TYPE" SHALL BE "PG 64-22" UNLESS MODIFIED BY DISTRICT ONE SPECIAL PROVISIONS

FOR USE OF RECYCLED MATERIALS SEE SPECIAL PROVISIONS.

FILE NAME: P:\Blue Island\2016\745_Cal-Sag Trail\Phase 2\Roadway\Riverdale\Typical Sections\TgrSec_Riverdale.dgn



USER NAME = ken.may	DESIGNED - KLM	REVISED - AUGUST 30, 2016
PLOT SCALE = 50,0000 1" = 100'	DRAWN - KLM	REVISED -
PLOT DATE = 8/30/2016 4:03:47 PM	CHECKED - BMC	REVISED -
	DATE - MAY 23, 2016	REVISED -

**STATE OF ILLINOIS
DEPARTMENT OF TRANSPORTATION**

**CAL-SAG GREENWAY TRAIL (RIVERDALE SEGMENT)
PROPOSED TYPICAL SECTIONS**

F.A.P. RTE.	SECTION	COUNTY	TOTAL SHEETS	SHEET NO.
	15-00131-00-BT	COOK	51	5
CONTRACT NO. 61C73				
FED. ROAD DIST. NO. 1 (ILLINOIS) FED. AID PROJECT				

SHEET NO. OF SHEETS STA. TO STA.

EARTHWORK SCHEDULE											
	STATION	TO	STATION	EARTH EXCAVATION CU YD	EARTH EXCAVATION ADJUSTED FOR SHRINKAGE (25%) CU YD	EMBANKMENT CU YD	EARTHWORK BALANCE WASTE (+) OR SHORTAGE (-) FURNISHED EXCAVATION CU YD	UNSUITABLE EXCAVATION (REMOVAL & DISPOSAL OF UNSUITABLE MATERIAL) CU YD	UNSUITABLE MATERIAL ADJUSTED FOR SHRINKAGE (25%) CU YD	TOPSOIL FURNISH AND PLACE, 6" CU YD	EARTHWORK BALANCE WASTE (+) OR SHORTAGE (-) (UNSUITABLE MATERIAL) CU YD
1	494+43.51		497+00.00	2	1	21	-20	83	63	15	48
OMISSION	497+00.00		512+50.00	-	-	-	-	-	-	-	-
2	512+50		513+46.26	3	2	8	-6	48	36	7	29
3	529+59.41		535+35.79	15	11	77	-66	280	210	39	171
4	536+38.20		543+31.68	32	24	65	-41	356	267	54	213
5	602+91.49		607+16.65	4	3	54	-50	183	137	27	110
6	100+98.47		105+32.93	7	5	94	-89	185	139	47	92
TOTAL:				63	47	320	-272	1,135	851	189	662

SCHEDULE FOR GATEWAY MONUMENT SIGN COMPLETE, DECORATIVE GATEWAY ELEMENT, DECORATIVE SIGN AND POST (DIRECT POST)																
Cook FPD Location	Round directional signs	Round Logo Signs	Rect. Trail Signs	Rect. Info Signs	Decorative sign & post	Decorative Gateway Element	Gateway Mon. Sign Complete	Logo 2 sided	Restroom Sign (arrow)	Bus sign (arrow)	Train Sign (arrow)	Restaur Sign (arrow)	Bike Shop (arrow)	Mile Marker	Sign Sup Brack	Directional Sign Callout with single arrows
494+61	4		2		1											(1) Riverdale (up), (1) Blue Island (up), (2) Major Taylor Trail (1 lt & 1 rt)
105+30	2				1											(1) Major Taylor Trail (lt), (1) Cal-Sag Trail (up)
Extras		2			1											
Subtotal	6	2	2	0	3	0	0	0	2					0	0	
Riverdale Location	Round directional signs	Round Logo Signs	Rect. Trail Signs	Rect. Info Signs	Decorative sign & post	Decorative Gateway Element	Gateway Mon. Sign Complete	Logo 2 sided	Restroom Sign (arrow)	Bus sign (arrow)	Train Sign (arrow)	Restaur Sign (arrow)	Bike Shop (arrow)	Mile Marker	Sign Sup Brack	Directional Sign Callout with single arrows
496+00							1									
513+40	2	2			1											(1) Riverdale (lt), (1) Blue Island (up)
543+10	1	1			1										2	(1) Riverdale (up)
562+45	1	1			1										2	(1) Dolton (lt)
563+50	1	1			1											(1) Blue Island (rt)
568+85	1	1	2		1									2		(1) Dolton (rt), MM=21
570+00	1	1			1											(1) Blue Island (lt)
583+15	1	1			1											(1) Blue Island (rt)
583+85	1	1			1											(1) Dolton (rt)
589+63						1										
595+70		2	2		1						1 lt & 1 rt				2	
603+45	2	2			1											(1) Dolton (up), Blue Island (lt)
611+60	2	2	2		1										2	(1) Riverdale (rt), Dolton (up)
614+50							1									
Extras		2			1		1									
Subtotal	13	17	6	0	12	1	3	0			2			2	8	

FILE NAME = PANBlue Island_25367145_Cal-Sag Trail_Village_2\Roadway\Riverdale\General\Schedules_Cal-Sag_Riverdale.dgn



USER NAME = ken.may	DESIGNED - KLM	REVISED - AUGUST 30, 2016
	DRAWN - KLM	REVISED -
PLOT SCALE = 20,0000' / in.	CHECKED - BMC	REVISED -
PLOT DATE = 8/30/2016 4:03:49 PM	DATE - MAY 23, 2016	REVISED -

**STATE OF ILLINOIS
DEPARTMENT OF TRANSPORTATION**

**CAL-SAG GREENWAY TRAIL (RIVERDALE SEGMENT)
SCHEDULES**

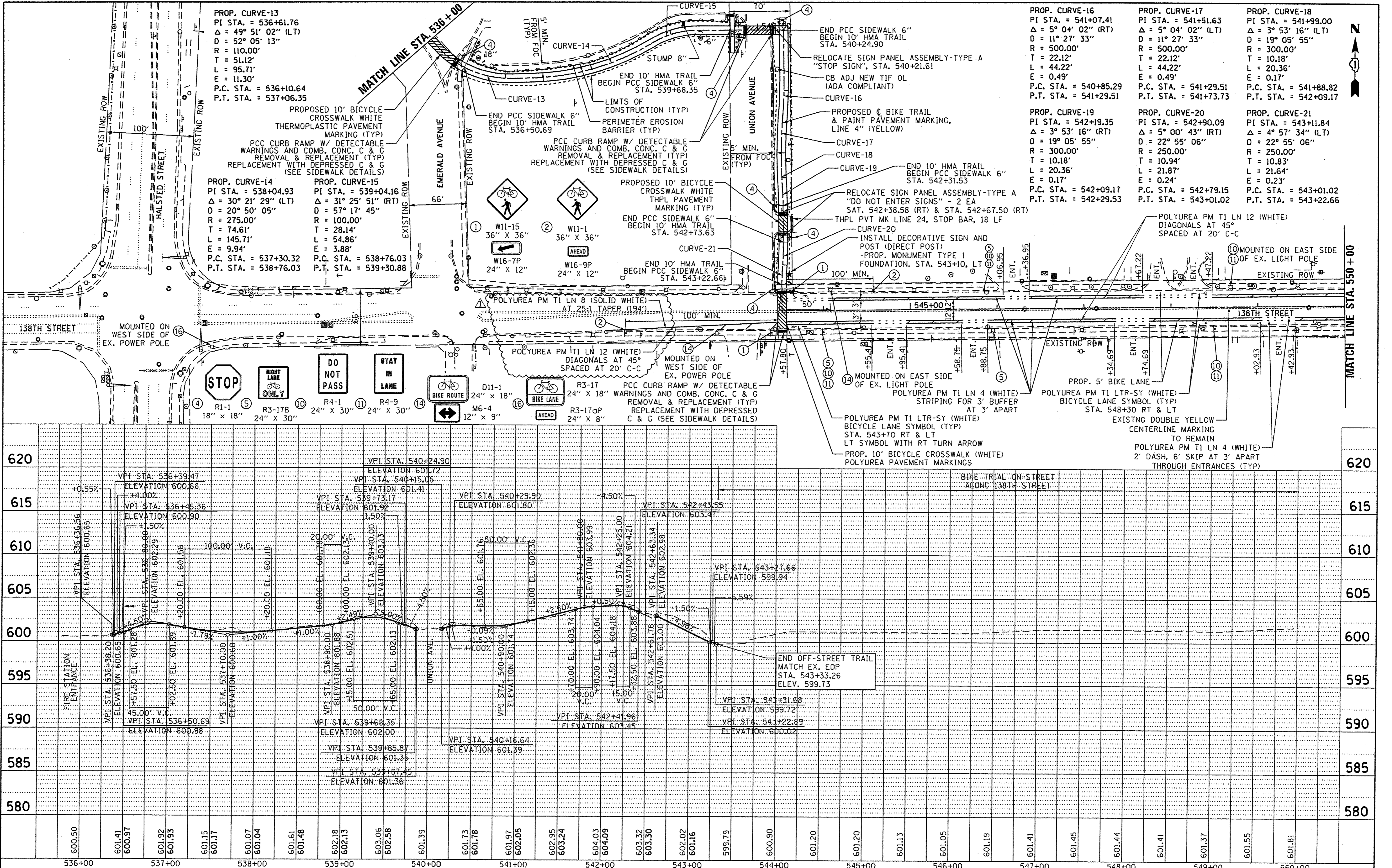
F.A.P. RTE.	SECTION	COUNTY	TOTAL SHEETS	SHEET NO.
	15-00131-00-BT	COOK	51	6
FED. ROAD DIST. NO. 1 ILLINOIS FED. AID PROJECT			CONTRACT NO. 61C73	

SHEET NO. OF SHEETS STA. TO STA.

DATE
BY
REVISIONS
DATE
BY
NO. 1
NO. 2
NO. 3
NO. 4

DATE
BY
REVISIONS
DATE
BY
NO. 1
NO. 2
NO. 3
NO. 4

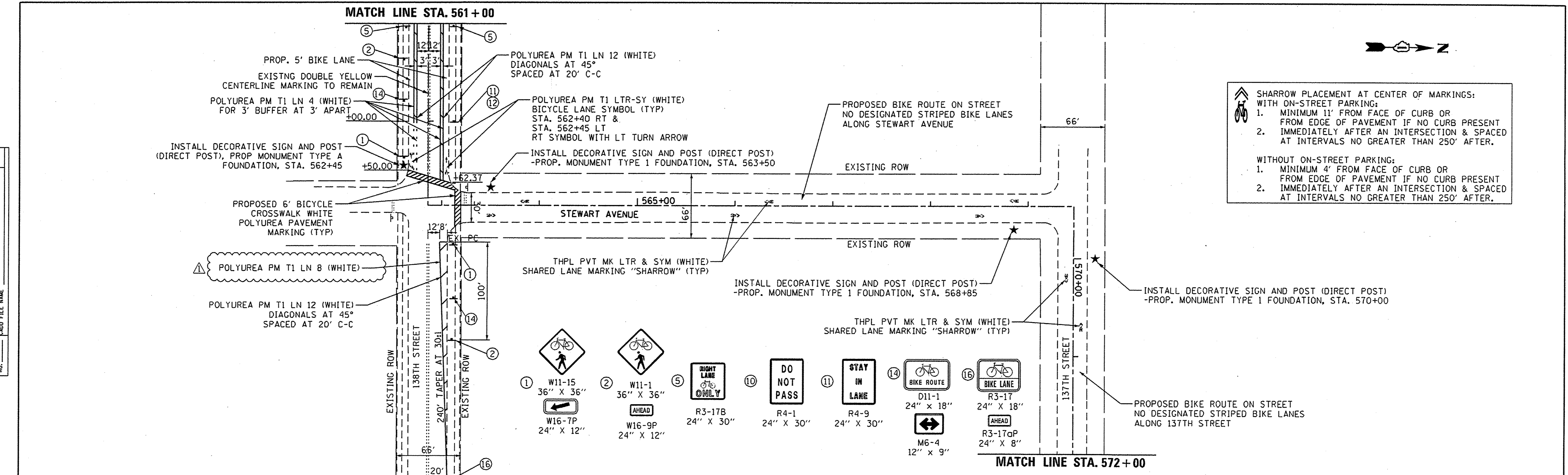
FILE NAME
P:\Blue_Island\25062745_Cal-Sag Trail\Phase 2\Roadway\Riverdale\PlanProfile\138th.dgn



AECOM 303 East Wacker Drive, Suite 1400, Chicago, IL 60601 T 312-373-7700 F 312-373-6800		USER NAME = ken.moy DESIGNED - KLM DRAWN - KLM CHECKED - BMC DATE - MAY 23, 2016		REVISED - AUGUST 30, 2016 REVISED - REVISED - REVISED -		STATE OF ILLINOIS DEPARTMENT OF TRANSPORTATION		CAL-SAG GREENWAY TRAIL (RIVERDALE SEGMENT) PLAN AND PROFILE		F.A. RTE. SECTION: 15-00131-00-BT COUNTY: COOK TOTAL SHEETS: 51 SHEET NO.: 13	
SCALE: 1" = 50' SHEET NO. 4 OF 9 SHEETS STA. 536+00 TO STA. 550+00						CONTRACT NO. 61C73		FED. ROAD DIST. NO. ILLINOIS FED. AID PROJECT			

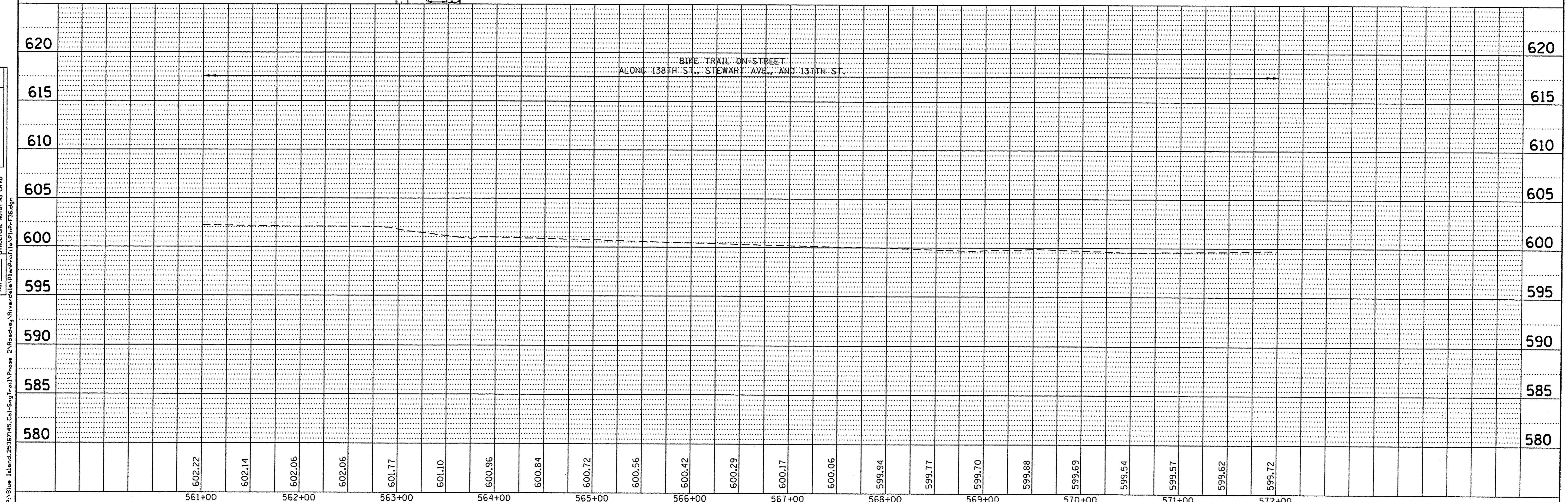
DATE	
BY	
PLANNED	
DESIGNED	
DRAWN	
CHECKED	
NO. _____	
FILE NAME	

DATE	
BY	
PROF. FILE	
GRADES CHECKED	
NO. _____	
STRUCTURE NOTATIONS CHKD	
FILE NAME	



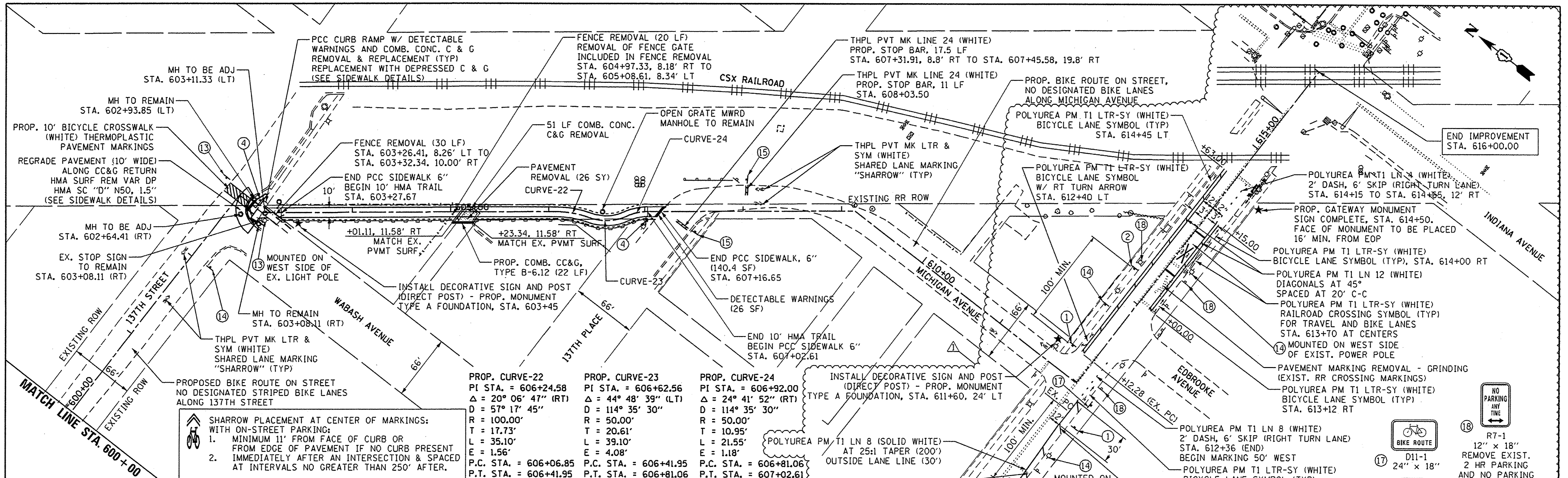
SHARROW PLACEMENT AT CENTER OF MARKINGS:
WITH ON-STREET PARKING:
1. MINIMUM 11' FROM FACE OF CURB OR FROM EDGE OF PAVEMENT IF NO CURB PRESENT
2. IMMEDIATELY AFTER AN INTERSECTION & SPACED AT INTERVALS NO GREATER THAN 250' AFTER.

WITHOUT ON-STREET PARKING:
1. MINIMUM 4' FROM FACE OF CURB OR FROM EDGE OF PAVEMENT IF NO CURB PRESENT
2. IMMEDIATELY AFTER AN INTERSECTION & SPACED AT INTERVALS NO GREATER THAN 250' AFTER.



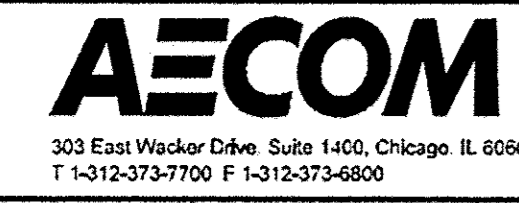
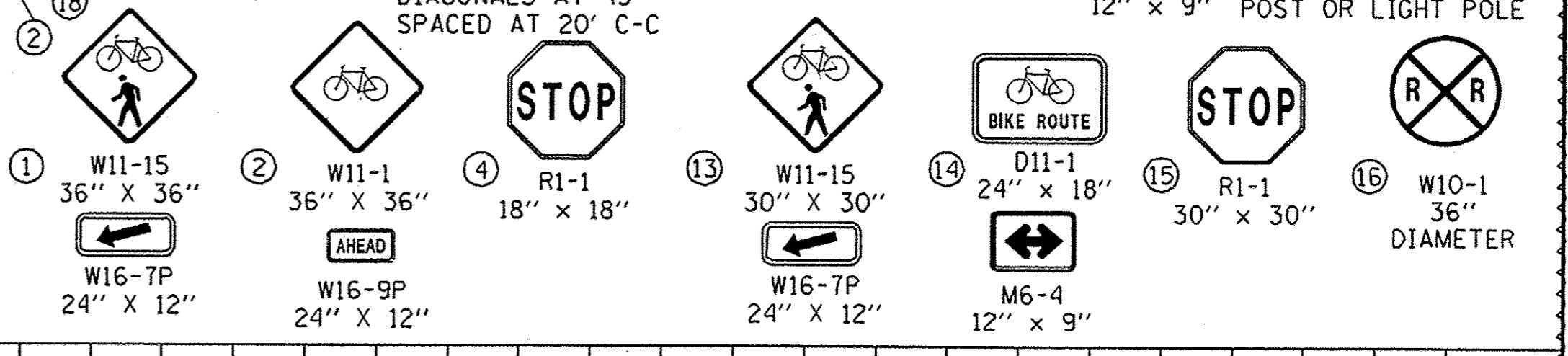
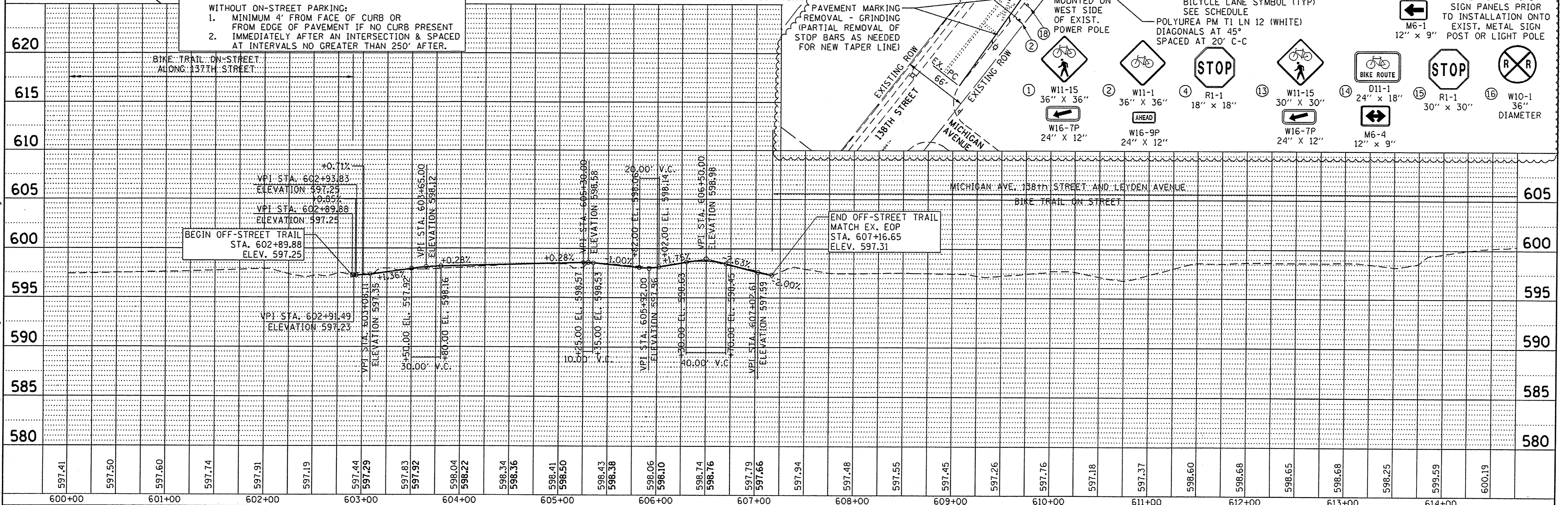
DATE	
BY	
REVISION	
NO.	
DESCRIPTION	
DATE	
BY	
REVISION	
NO.	
DESCRIPTION	
DATE	
BY	
REVISION	
NO.	
DESCRIPTION	

DATE	
BY	
REVISION	
NO.	
DESCRIPTION	
DATE	
BY	
REVISION	
NO.	
DESCRIPTION	
DATE	
BY	
REVISION	
NO.	
DESCRIPTION	



SHARROW PLACEMENT AT CENTER OF MARKINGS:
 WITH ON-STREET PARKING:
 1. MINIMUM 11' FROM FACE OF CURB OR FROM EDGE OF PAVEMENT IF NO CURB PRESENT IMMEDIATELY AFTER AN INTERSECTION & SPACED AT INTERVALS NO GREATER THAN 250' AFTER.
 WITHOUT ON-STREET PARKING:
 1. MINIMUM 4' FROM FACE OF CURB OR FROM EDGE OF PAVEMENT IF NO CURB PRESENT IMMEDIATELY AFTER AN INTERSECTION & SPACED AT INTERVALS NO GREATER THAN 250' AFTER.

PROP. CURVE-22 PI STA. = 606+24.58 Δ = 20° 06' 47" (RT) D = 57' 17' 45" R = 100.00' T = 17.73' L = 35.10' E = 1.56' P.C. STA. = 606+06.85 P.T. STA. = 606+41.95	PROP. CURVE-23 PI STA. = 606+62.56 Δ = 44° 48' 39" (LT) D = 114' 35' 30" R = 50.00' T = 20.61' L = 21.55' E = 4.08' P.C. STA. = 606+41.95 P.T. STA. = 606+81.06	PROP. CURVE-24 PI STA. = 606+92.00 Δ = 24° 41' 52" (RT) D = 114' 35' 30" R = 50.00' T = 10.95' L = 1.18' E = 1.18' P.C. STA. = 606+81.06 P.T. STA. = 607+02.61
---	---	--



USER NAME = ken.moy	DESIGNED - KLM	REVISED - AUGUST 30, 2016
PLLOT SCALE = 50.0000' / 1"	DRAWN - KLM	REVISED -
PLLOT DATE = 8/30/2016	CHECKED - BMC	REVISED -
	DATE - MAY 23, 2016	REVISED -

STATE OF ILLINOIS
DEPARTMENT OF TRANSPORTATION

CAL-SAG GREENWAY TRAIL (RIVERDALE SEGMENT)
PLAN AND PROFILE

F.A. RTE.	SECTION	COUNTY	TOTAL SHEETS	SHEET NO.
	15-00131-00-BT	COOK	51	18
FED. ROAD DIST. NO.	ILLINOIS FED. AID PROJECT	CONTRACT NO. 61C73		

SCALE: 1" = 50' SHEET NO. 9 OF 9 SHEETS STA. 600+00 TO STA. 616+00

FILE NAME: P:\Blue Island\25362745_Cal-Sag Trail\Phase 2\Roadway\Riverdale\PlanProfile\15-00131-00-BT.dwg