

STATE OF ILLINOIS
DEPARTMENT OF TRANSPORTATION

F.A.U. RTE.	SECTION	COUNTY	TOTAL SHEETS	SHEET NO.
9251	28-2HB-BP-1	ST. CLAIR	19	1
		ILLINOIS	CONTRACT NO. 76P69	

FOR INDEX OF SHEETS, SEE SHEET NO. 2

PROPOSED HIGHWAY PLANS

FAU ROUTE 9251 (IL 13)
SECTION 28-2HB-BP-1
PROJECT STP-01S7(885)
BRIDGE PAINTING
ST. CLAIR COUNTY

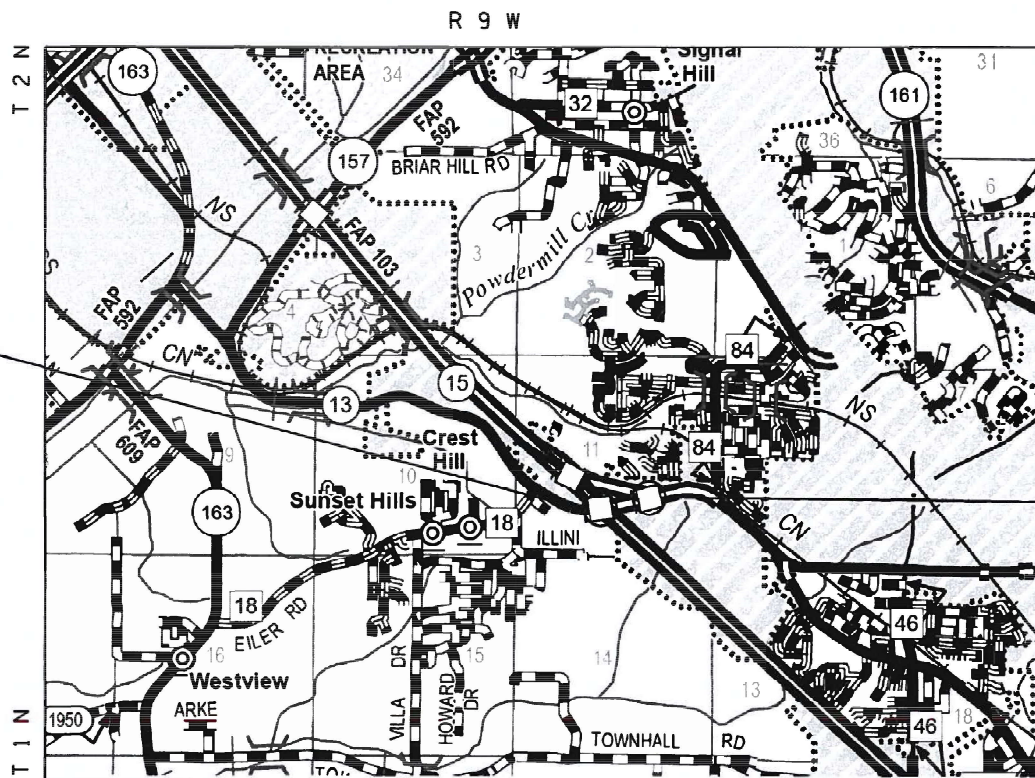
C-98-107-21

TRAFFIC DATA	
LOCATION	NB/SB IL 13
2019 ADT	8350 (ACTUAL)
2041 ADT	10,400 (ESTIMATED)
MU%	1.0
SU%	2.3
FUNCTIONAL CLASS:	MINOR ARTERIAL

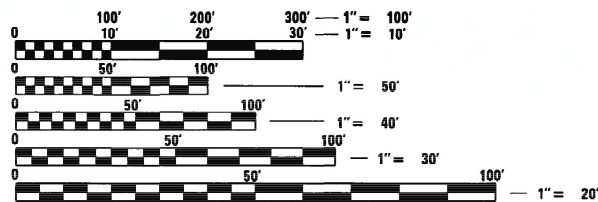
LOCATION	NB/SB IL 15
2018 ADT	24,100 (ACTUAL)
2041 ADT	30,000 (ESTIMATED)
MU%	3.7
SU%	3.0
FUNCTIONAL CLASS:	OTHER PRINCIPAL ARTERIAL



LOCATION 1
S.N. 082-0115
LAT: 38.54618
LONG: -90.06506
(230.7 FT)

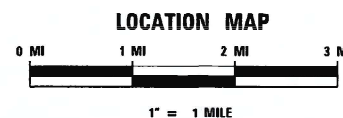


LOCATION 2
S.N. 082-0116
LAT: 38.54690
LONG: -90.06040
(181.7 FT)



FULL SIZE PLANS HAVE BEEN PREPARED USING STANDARD ENGINEERING SCALES. REDUCED SIZED PLANS WILL NOT CONFORM TO STANDARD SCALES. IN MAKING MEASUREMENTS ON REDUCED PLANS, THE ABOVE SCALES MAY BE USED.

J.U.L.I.E.
JOINT UTILITY LOCATION INFORMATION FOR EXCAVATORS
1-800-892-0123
OR 811



GROSS LENGTH = 412.4 FT. = 0.08 MILE
NET LENGTH = 412.4 FT. = 0.08 MILE

PROJECT ENGINEER: BILLIE OWEN (618) 346-3209
PROJECT MANAGER: PHIL FREIMUTH (618) 346-3194

CONTRACT NO. 76P69

STATE OF ILLINOIS
DEPARTMENT OF TRANSPORTATION

SUBMITTED June 24 2021
Keith Roberts
REGIONAL ENGINEER

August 13, 2021
Scott A. Elk
ENGINEER OF DESIGN AND ENVIRONMENT

August 13, 2021
James J. Gu
DIRECTOR OF HIGHWAYS PROJECT IMPLEMENTATION

PRINTED BY THE AUTHORITY
OF THE STATE OF ILLINOIS

INDEX OF SHEETS

- 1 COVER SHEET
- 2 INDEX OF SHEETS, HIGHWAY STANDARDS, GENERAL NOTES, & COMMITMENTS
- 3 SUMMARY OF QUANTITIES
- 4 TYPICAL SECTIONS
- 5 SCHEDULE OF QUANTITIES
- 6-13 PLAN, DETAIL, & ELEVATION SHEETS SN 082-0115
- 14-19 PLAN, DETAIL, & ELEVATION SHEETS SN 082-0116

HIGHWAY STANDARDS

- 000001-08 STANDARD SYMBOLS, ABBREVIATIONS AND PATTERNS
- 001006 DECIMAL OF AN INCH AND OF A FOOT
- 701101-05 OFF-RD OPERATIONS, MULTILANE 15' (4.5 M) TO 24 " (600 MM) FROM PAVEMENT EDGE
- 701106-02 OFF-RD OPERATIONS, MULTILANE MORE THAN 15' (4.5 M) AWAY
- 701400-10 APPROACH LANE CLOSURE, FREEWAY/EXPRESSWAY
- 701411-09 LANE CLOSURE, MULTILANE, ENTRANCE OR EXIT RAMP 45 MPH OR MORE
- 701422-10 LANE CLOSURE, MULTILANE, FOR SPEEDS ≥ 45 MPH TO 55 MPH
- 701423-10 LANE CLOSURE, MULTILANE, WITH BARRIER, FOR SPEEDS ≥ 45 MPH TO 55 MPH
- 701428-01 TRAFFIC CONTROL SETUP AND REMOVAL FREEWAY/EXPRESSWAY
- 701451-05 RAMP CLOSURE FREEWAY/EXPRESSWAY
- 701901-08 TRAFFIC CONTROL DEVICES
- 704001-08 TEMPORARY CONCRETE BARRIER
- 782006-01 GUARDRAIL AND BARRIER WALL REFLECTOR MOUNTING DETAILS

COMMITMENTS

NONE

GENERAL NOTES

- ① AGENCIES KNOWN TO HAVE FACILITIES WITHIN THE PROJECT AREA ARE AS FOLLOWS:

	AERIAL	BURIED
AMEREN ILLINOIS (GAS & ELECTRIC)	X	X
AT&T ILLINOIS (COMMUNICATIONS)	X	X
CITY OF BELLEVILLE (SANITARY SEWER)		X
CHARTER COMMUNICATIONS, INC. (CABLE TV)	X	X
CLEARWAVE COMMUNICATIONS (COMMUNICATIONS)	X	X
EVERSTREAM GLC HOLDING COMPANY LLC (COMMUNICATIONS)	X	X
LEVEL 3 COMMUNICATIONS (COMMUNICATIONS)	X	X
- ② NO SURVEY WAS PERFORMED FOR THIS PROJECT. THE PLANS WERE CREATED USING MICROFILM AND FIELD MEASUREMENTS.
- ③ THE SSPC-QP1 AND SSPC-QP2 CERTIFICATIONS WILL BE REQUIRED FOR ALL BRIDGES.
- ④ FOR LOCATIONS 1 AND 2, CLEANING AND PAINTING OF THE EXISTING STRUCTURES STEEL SHALL BE AS SPECIFIED IN THE SPECIAL PROVISION FOR "CLEANING AND PAINTING EXISTING STEEL STRUCTURES." ALL EXISTING STEEL SHALL BE CLEANED PER NEAR WHITE BLAST CLEANING - SSPC-SP10. ALL EXISTING STEEL SHALL BE PAINTED ACCORDING TO REQUIREMENTS OF PAINT SYSTEM 1-OZ/E/U. THE COLOR OF THE FINAL FINISH COAT FOR ALL SURFACES SHALL BE GRAY, MUNSELL NO. SB 7/1.
- ⑤ A MINIMUM OF TWO AIR MONITORS WILL BE REQUIRED TO MONITOR ABRASIVE BLAST OPERATIONS AT EACH STRUCTURE. SEE SPECIAL PROVISION FOR "CONTAINMENT AND DISPOSAL OF LEAD PAINT CLEANING RESIDUES."
- ⑥ FOUR CHANGEABLE MESSAGE SIGNS SHALL BE PROVIDED TO BE PLACED ALONG NORTHBOUND AND SOUTHBOUND IL 15 AND IL 13 TO ALERT DRIVERS OF THE UPCOMING ROAD CONSTRUCTION. CHANGEABLE MESSAGE SIGNS SHALL BE PLACED 14 DAYS PRIOR TO LANE CLOSURES ON IL 15 AND IL 13. EXACT LOCATIONS OF THE CHANGEABLE MESSAGE SIGNS SHALL BE DETERMINED BY THE ENGINEER
- ⑦ ALL TURF AREA DISTURBED BY THE CONTRACTOR SHALL BE SEEDED WITH THE APPROPRIATE EROSION CONTROL AS DIRECTED BY THE RESIDENT ENGINEER/TECHNICIAN AT THE CONTRACTOR'S EXPENSE.
- ⑧ THE USE OF CONES SHALL NOT BE PERMITTED AT THIS LOCATION.
- ⑨ "ROAD CONSTRUCTION AHEAD" SIGNS SHALL BE PLACED AT EACH END OF THE PROJECT LOCATIONS AND ALL INTERSECTING SIDE ROADS AND WILL BE INCLUDED IN THE TRAFFIC CONTROL PAY ITEMS. ALL CONSTRUCTION SIGNS SHALL BE FLUORESCENT ORANGE. 48".
- ⑩ WB IL 13 TO SB IL 15 LOOP RAMP SHALL BE CLOSED DURING ANY LANE CLOSURES ON IL 15 FOR PAINTING OF SN 082-0115.

MODEL: Default
 FILE NAME: p:\mllerra\room.dwg
 PROJECT: I:\projects\082-0115\DOT\Office\Drawings\082-0115-01-INDEX.dwg
 PLOT DATE: 6/24/2021

USER NAME = mllerra	DESIGNED -	REVISED -
	DRAWN -	REVISED -
PLOT SCALE = 100,0000' / in.	CHECKED -	REVISED -
PLOT DATE = 6/24/2021	DATE -	REVISED -

**STATE OF ILLINOIS
DEPARTMENT OF TRANSPORTATION**

**INDEX OF SHEETS, HIGHWAY STANDARDS, GENERAL NOTES,
& COMMITMENTS**

SCALE: NTS SHEET 1 OF 1 SHEETS STA. TO STA.

F.A.U. RTE.	SECTION	COUNTY	TOTAL SHEETS	SHEET NO.
9251	28-2HB-BP-1	ST. CLAIR	19	2
CONTRACT NO. 76P69				
ILLINOIS FED. AID PROJECT				

80% FED 20% STATE

80% FED 20% STATE

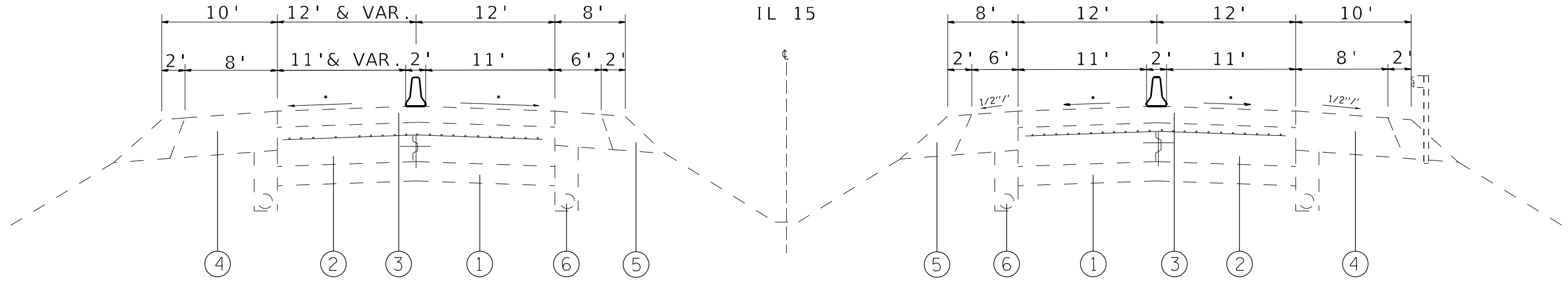
CODE NO.	ITEM	UNIT	TOTAL QUANTITY	CONSTRUCTION CODE	
				URBAN	URBAN
				BRIDGE 0047	BRIDGE 0047
				082-0115	082-0116
67100100	MOBILIZATION	L SUM	1	0.5	0.5
70100315	TRAFFIC CONTROL AND PROTECTION, STANDARD 701422	EACH	2	1	1
70100325	TRAFFIC CONTROL AND PROTECTION, STANDARD 701423	EACH	2	1	1
70100420	TRAFFIC CONTROL AND PROTECTION, STANDARD 701411	EACH	2	2	
70100820	TRAFFIC CONTROL AND PROTECTION, STANDARD 701451	L SUM	1	0.5	0.5
70107005	PAVEMENT MARKING BLACKOUT TAPE, 5"	FOOT	5655	3770	1885
70107025	CHANGEABLE MESSAGE SIGN	CAL DA	42	42	0
70300150	SHORT TERM PAVEMENT MARKING REMOVAL	SQ FT	2355	1570	785
70400100	TEMPORARY CONCRETE BARRIER	FOOT	1200	800	400
70400200	RELOCATE TEMPORARY CONCRETE BARRIER	FOOT	789	526	263
70600250	IMPACT ATTENUATORS, TEMPORARY (NON- REDIRECTIVE), TEST LEVEL 3	EACH	3	2	1
70600350	IMPACT ATTENUATORS, RELOCATE (NON- REDIRECTIVE), TEST LEVEL 3	EACH	3	2	1
Z0007101	CONTAINMENT AND DISPOSAL OF LEAD PAINT CLEANING RESIDUES NO. 1	L SUM	1	1	
Z0007102	CONTAINMENT AND DISPOSAL OF LEAD PAINT CLEANING RESIDUES NO. 2	L SUM	1		1

CODE NO.	ITEM	UNIT	TOTAL QUANTITY	CONSTRUCTION CODE	
				URBAN	URBAN
				BRIDGE 0047	BRIDGE 0047
				082-0115	082-0116
Z0010501	CLEANING AND PAINTING STEEL BRIDGE NO. 1	L SUM	1	1	
Z0010502	CLEANING AND PAINTING STEEL BRIDGE NO. 2	L SUM	1		1

MODEL: Default
FILE NAME: P:\ip\amcom.dct\illinois.gov\PIWDOT\Documents\DOT - Offices\District B\Project\0876969\CAD\data\CAD\sheet\0876969-01-cover.dgn

REV. - MS

USER NAME = millerraj	DESIGNED -	REVISED -	STATE OF ILLINOIS DEPARTMENT OF TRANSPORTATION	SUMMARY OF QUANTITIES				F.A.U. RTE.	SECTION	COUNTY	TOTAL SHEETS	SHEET NO.		
	DRAWN -	REVISED -		SCALE: NTS	SHEET 1	OF 1	SHEETS	STA.	TO STA.	9251	28-2HB-BP-1	ST. CLAIR	19	3
PLOT SCALE = 100.0000' / in.	CHECKED -	REVISED +		CONTRACT NO. 76P69										
PLOT DATE = 6/24/2021	DATE -	REVISED +		ILLINOIS FED. AID PROJECT										

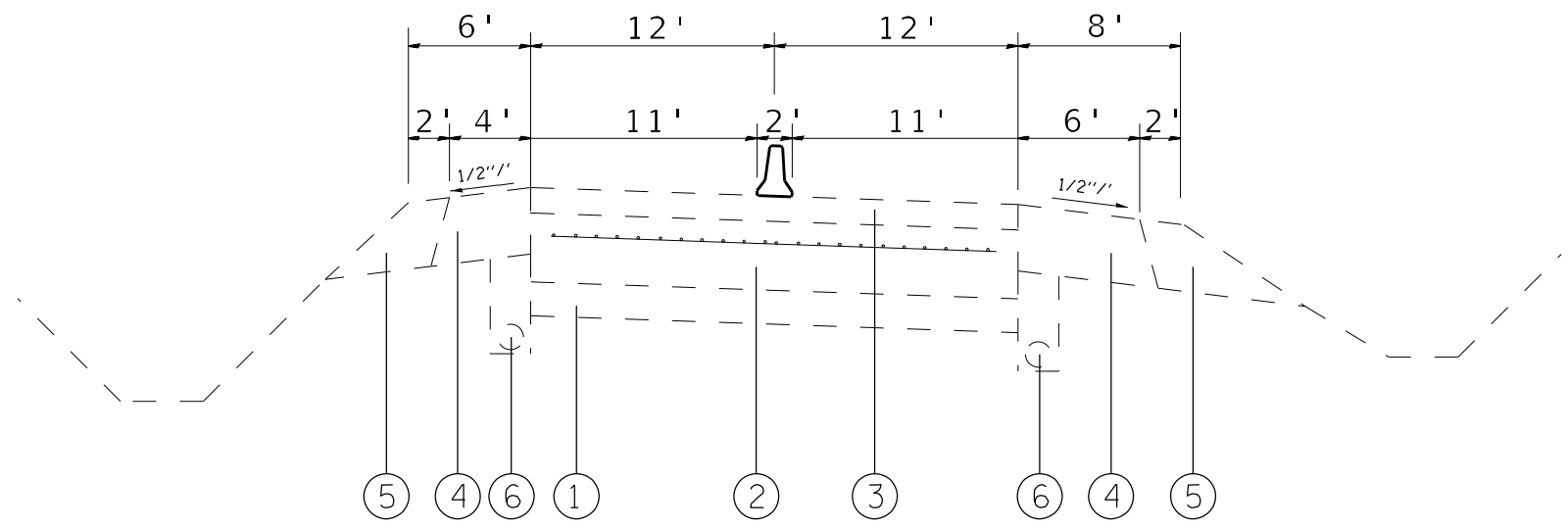


WB LANE

WB/EB IL 15 TYPICAL SECTION

EB LANE

STA. 342+00 TO STA. 343+00



IL 13/15 BASELINE B RAMP TYPICAL SECTION

STA. 10+600 TO STA. 10+700

LEGEND

- ① EXISTING SUB-BASE GRANULAR MATERIAL, VARIES 4" TO 12"
- ② EXISTING PCC PAVEMENT 10"
- ③ EXISTING HMA RESURFACING 2.5"
- ④ EXISTING HMA SHOULDER 8"
- ⑤ EXISTING AGG. WEDGE SHOULDER, TYPE B
EXISTING PIPE UNDERDRAINS

MODEL: Default
 FILE NAME: p:\data\mroom.dwg
 PROJECT: 0776691\DOT Documents\DOT Office\Drawings\Project\0776691\CADD\0776691\0776691-11-10-2021.dwg

USER NAME = millerra]	DESIGNED -	REVISED -
	DRAWN -	REVISED -
PLOT SCALE = 100,0000 ' / in.	CHECKED -	REVISED -
PLOT DATE = 6/24/2021	DATE -	REVISED -

**STATE OF ILLINOIS
DEPARTMENT OF TRANSPORTATION**

SCALE: NTS		SHEET 1 OF 1 SHEETS		STA. TO STA.	
		TYPICAL SECTION			

F.A.U. RTE.	SECTION	COUNTY	TOTAL SHEETS	SHEET NO.
9251	28-2HB-BP-1	ST. CLAIR	19	4
CONTRACT NO. 76P69				
ILLINOIS FED. AID PROJECT				

PAVEMENT MARKING SCHEDULE

LOCATION	LENGTH	TEMPORARY CONCRETE BARRIER	RELOCATE TEMPORARY CONCRETE BARRIER	IMPACT ATTENUATORS, TEMPORARY (NON-REDIRECTIVE) TEST LEVEL 3	IMPACT ATTENUATORS, RELOCATE (NON-REDIRECTIVE) TEST LEVEL 3	PAVEMENT MARKING BLACKOUT TAPE 5"	SHORT-TERM PAVEMENT MARKING REMOVAL
	FOOT	FOOT	FOOT	EACH	EACH	FOOT	SQFT
SN 082-0115							
STAGE I							
323+17 TO 342+02	1885	400	263	1	1	1885	785
STAGE II							
343+93 TO 362+78	1885	400	263	1	1	1885	785
SN 082-0116							
329+61 TO 348+46	1885	400	263	1	1	1885	785
TOTAL :		1200	789	3	3	5655	2355

MODEL: Default
 FILE NAME: p:\mllerra\mllerra\p\7669\DOT\Documents\DOT_Offices\District 8\Projects\082-0115\082-0115-CAD\data\CAD\Drawings\082-0115-PAVEMENT-MARKING-SCHEDULE.dgn

USER NAME = mllerra	DESIGNED -	REVISED -
	DRAWN -	REVISED -
PLOT SCALE = 100,0000' / in.	CHECKED -	REVISED -
PLOT DATE = 6/24/2021	DATE -	REVISED -

**STATE OF ILLINOIS
DEPARTMENT OF TRANSPORTATION**

SCHEDULE OF QUANTITIES

SCALE: NTS SHEET 1 OF 1 SHEETS STA. TO STA.

F.A.U. RTE.	SECTION	COUNTY	TOTAL SHEETS	SHEET NO.
9251	28-2HB-BP-1	ST. CLAIR	19	5
CONTRACT NO. 76P69				
ILLINOIS FED. AID PROJECT				

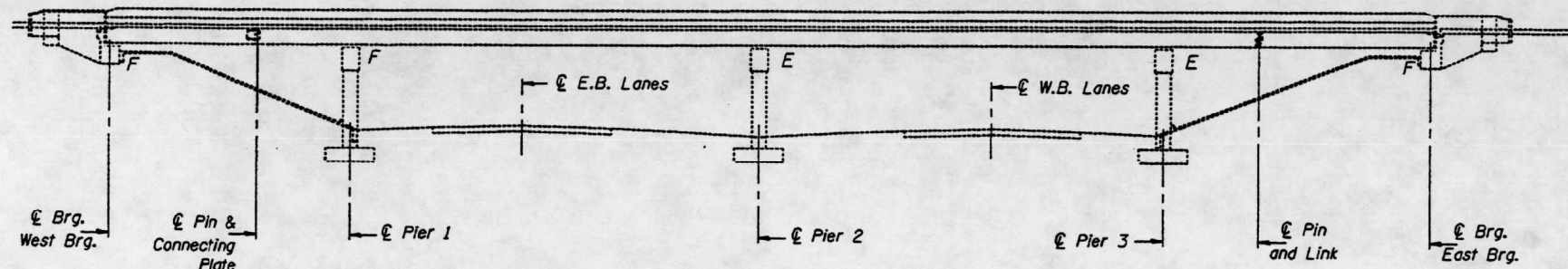
STATE OF ILLINOIS
DEPARTMENT OF TRANSPORTATION

ROUTE NO.	SECTION	COUNTY	SHEETS	SHEET NO.
F.A.U. 9251	*	ST. CLAIR	15	13
SHEET NO. 1 3 SHEETS				

* DISTRICT 8 PIN AND LINK 2000-1

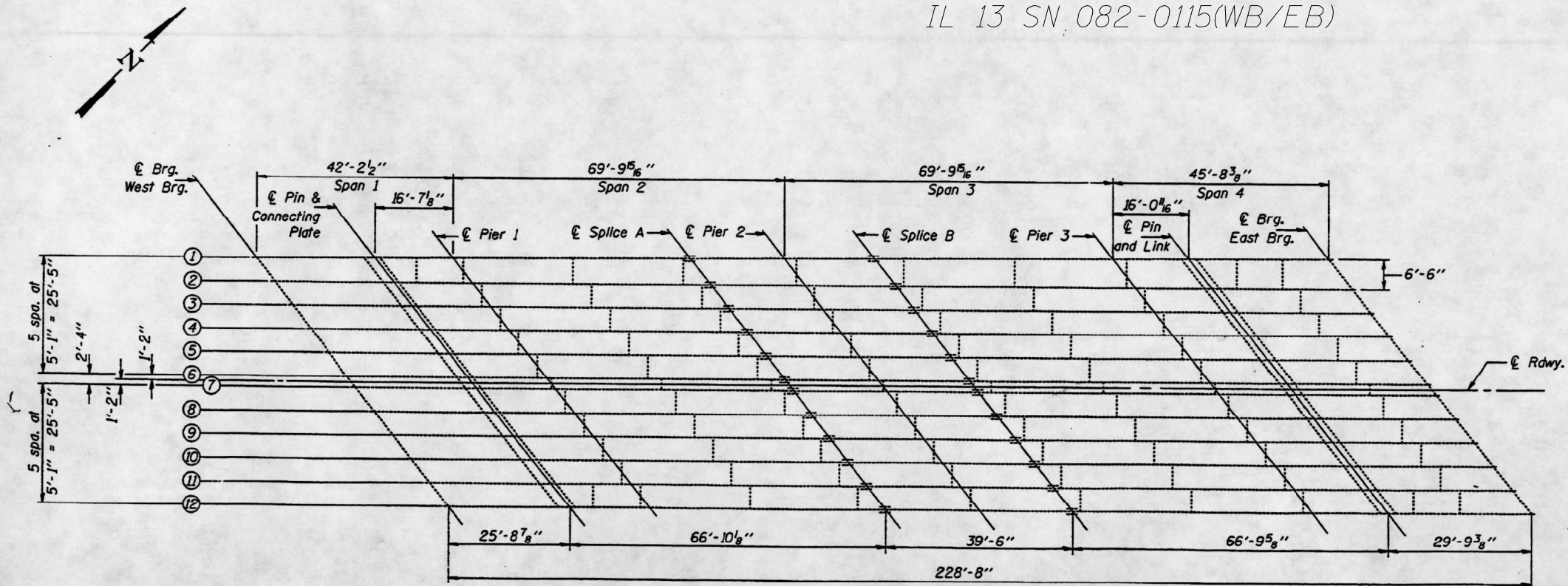
GENERAL NOTES

- All new structural steel shall conform to AASHTO Classification M-270 Gr. 36, unless otherwise noted.
- The Contractor shall provide support and/or shoring systems for the beam in the area of existing pin and link plate replacement. See Special Provision "Temporary Support System."
- The inorganic zinc rich primer/acrylic/acrylic paint system shall be used for shop and field painting of new structural steel except where otherwise noted. The color of the acrylic finish coat shall be Interstate Green, Munsell No. 7.5G 4/8. See Special Provision "Cleaning and Painting New Metal Structures". Cost shall be included in the cost of "Pin and Link Plate Replacement."
- Existing Structural steel shall only be cleaned and painted as required by the Special Provision "Cleaning and Painting Adjacent Areas of Existing Steel Structures". Cost shall be included in the cost of "Pin and Link Plate Replacement."
- All existing steel surfaces behind link plates shall be cleaned and primed before installation of new link plates. Cost shall be included in the cost of "Pin and Link Plate Replacement."
- Plan dimensions and details relative to existing structure have been taken from existing plans and are subject to nominal construction variations. It shall be the Contractor's responsibility to verify such dimensions and details in the field, except the pin diameters, and make necessary approved adjustments prior to construction or ordering of materials. Such variations shall not be cause for additional compensation for a change in the scope of the work, however, the Contractor will be paid for the quantity actually furnished at the unit price bid for the work.
- The Pins and Link Plates shall conform to the minimum Charpy V-Notch Toughness of 25 ft.-lbs. at 40° F.
- The pins, link plates, bushings, nuts, Set Bolts, Neoprene Pad, silicone sealant and high strength bolts are the items included in "Pin and Link Plate Replacement".
- The existing structural steel coating contains lead. The Contractor should take appropriate precautions to deal with the presence of lead on this project.
- Only a below-deck temporary support system to be used during the pin and link replacement.



ELEVATION

IL 13 SN 082-0115(WB/EB)



FRAMING PLAN

TOTAL BILL OF MATERIAL

ITEM	UNIT	QUANTITY
Temporary Support System	Each	24
Pin & Link Plate Replacement	Each	24

DESIGNED *Richard L. Chapp*
CHECKED *Kenneth P. Smith*
DRAWN *Dierbert*
CHECKED *RJC KPS*

DECEMBER 29, 1999

EXAMINED *John A. Morris*
PASSED

ENGINEER OF STRUCTURAL SERVICES
ENGINEER OF BRIDGES AND STRUCTURES

FOR INFORMATIONAL USE ONLY

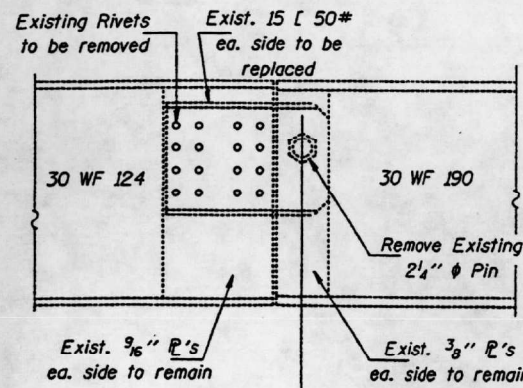
PIN & LINK PLATE REPLACEMENT
F.A.U. RT. 9251 OVER ILL. RTE 15
SEC. 28-2HBR
ST. CLAIR COUNTY
STA. 50+00.00
S.N. 082-0115

USER NAME = millerraj	DESIGNED -	REVISED -	STATE OF ILLINOIS DEPARTMENT OF TRANSPORTATION	PLAN & ELEVATION	F.A.U. RTE. 9251	SECTION 28-2HB-BP-1	COUNTY ST. CLAIR	TOTAL SHEETS 19	SHEET NO. 6
PLOT SCALE = 100,0000' / in.	CHECKED -	REVISED -	SCALE: NTS	SHEET 1 OF 8 SHEETS	STA.	TO STA.	CONTRACT NO. 76P69		
PLOT DATE = 7/20/2021	DATE -	REVISED -				ILLINOIS FED. AID PROJECT			

STATE OF ILLINOIS
DEPARTMENT OF TRANSPORTATION

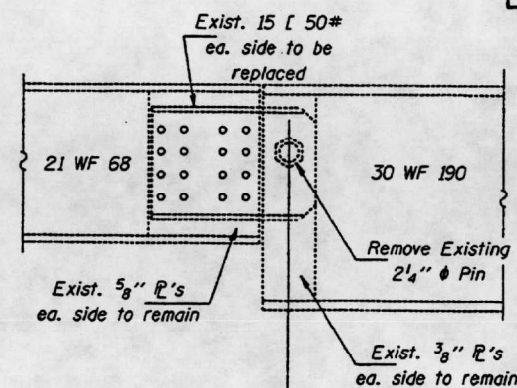
ROUTE NO.	SECTION	COUNTY	TOTAL SHEETS	SHEET NO.
F.A.U. 9251	*	ST. CLAIR	15	14
SHEET NO. 2 3 SHEETS				

* DISTRICT 8 PIN AND LINK 2000-1



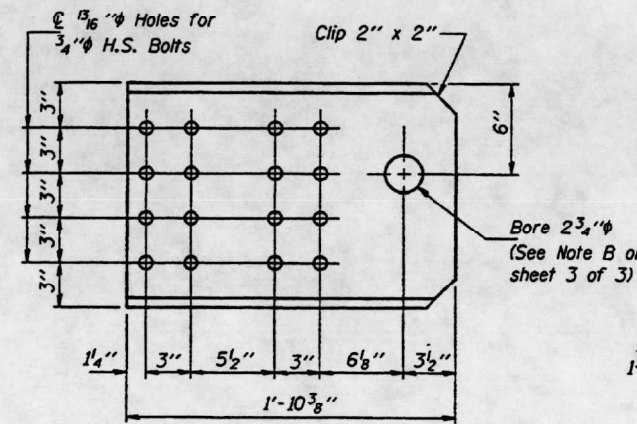
**ELEVATION AT EXISTING SPAN 1
PIN ASSEMBLY FOR EXTERIOR BEAMS**

(Looking North)

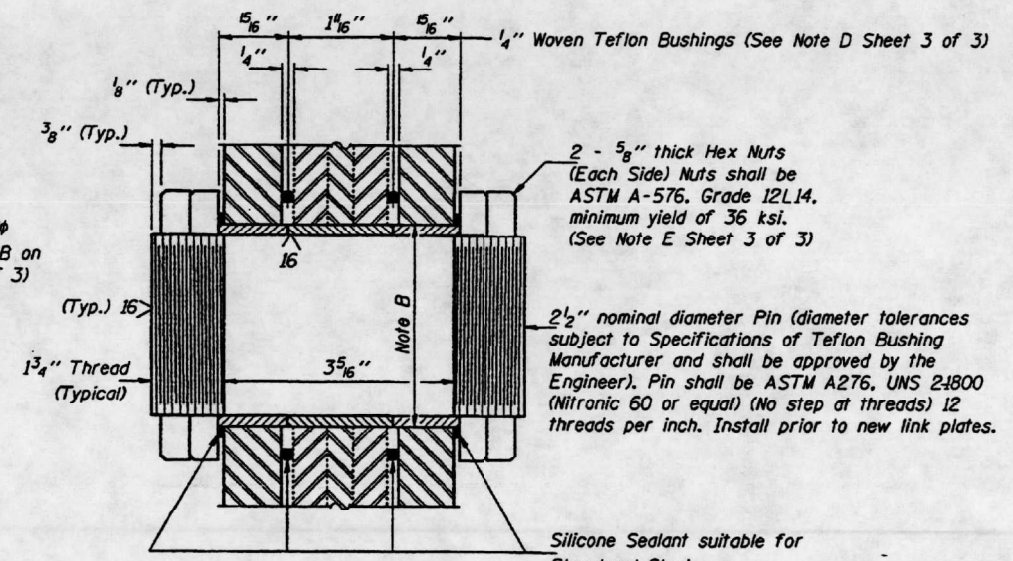


**ELEVATION AT EXISTING SPAN 1
PIN ASSEMBLY FOR INTERIOR BEAMS**

(Looking North)

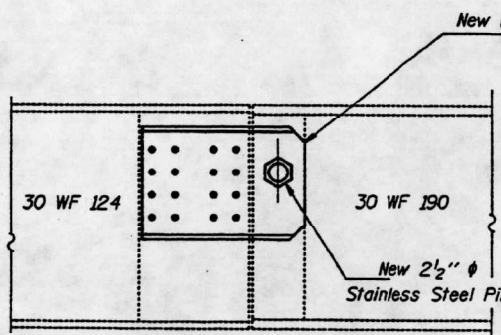


CHANNEL DETAIL
(24 Required)



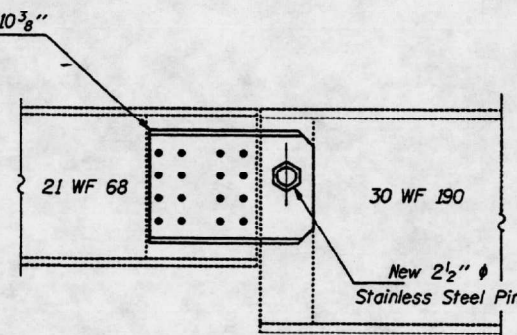
SECTION THRU PIN
(12 Required)

Silicone Sealant suitable for Structural Steel



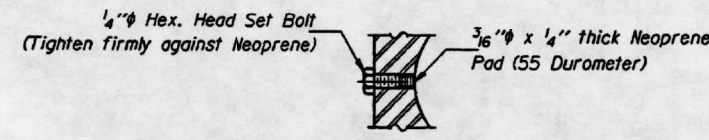
**ELEVATION AT NEW SPAN 1
PIN ASSEMBLY FOR EXTERIOR BEAMS**

(Looking North)



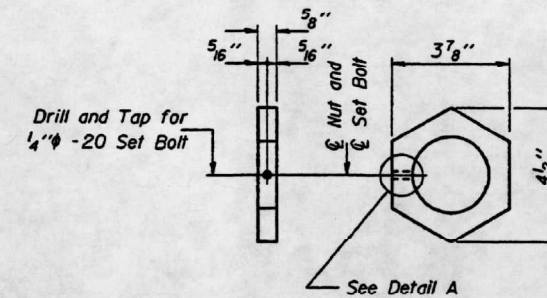
**ELEVATION AT NEW SPAN 1
PIN ASSEMBLY FOR INTERIOR BEAMS**

(Looking North)

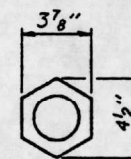


DETAIL A

Set Bolts shall conform to the requirements of ASTM A 307 and shall be galvanized according to AASHTO M 232.



EXTERIOR NUT DETAIL
(24 Required)



INTERIOR NUT DETAIL
(24 Required)

IL 13 SN 082-0115(WB/EB)

MAXIMUM REACTIONS AT PIN (SPAN 1)

RP	(K)	11.1
Rt	(K)	21.6
Imp.	(K)	6.5
R (Total)	(K)	39.2

FOR INFORMATIONAL USE ONLY

PIN & CONNECTING PLATE REPLACEMENT

F.A.U. RT. 9251 SEC. 28-2HBR

ST. CLAIR COUNTY

STATION 50+00.00

S.N. 082-0115

DESIGNED	R.J.C.	DECEMBER 29, 1999
CHECKED	K.P.S.	EXAMINED <i>John A. Morris</i>
DRAWN	D-herbert	ENGINEER OF STRUCTURAL SERVICES
CHECKED	R.J.C. V.H.V.	PASSED
		ENGINEER OF BRIDGES AND STRUCTURES

MODEL: Default
 FILE NAME: p:\miller\proj\111111\DOT\Documents\DOT - Office\District 8\Projects\082-0115\CAD\Process\082-0115-28-2HBR-14-10-00.dwg
 PROJECT: 082-0115

USER NAME = milleraj	DESIGNED -	REVISED -
	DRAWN -	REVISED -
PLOT SCALE = 100,0000' / in.	CHECKED -	REVISED -
PLOT DATE = 7/20/2021	DATE -	REVISED -

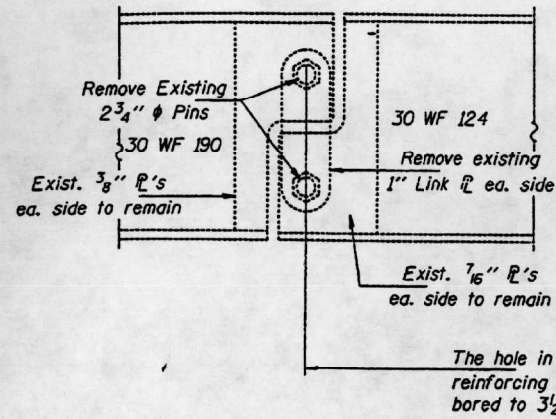
STATE OF ILLINOIS
DEPARTMENT OF TRANSPORTATION

PLAN & ELEVATION

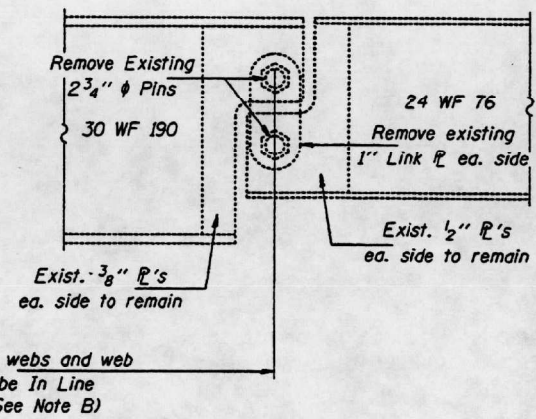
SCALE: NTS SHEET 2 OF 8 SHEETS STA. TO STA.

F.A.U. RTE.	SECTION	COUNTY	TOTAL SHEETS	SHEET NO.
9251	28-2HB-BP-1	ST. CLAIR	19	7
CONTRACT NO. 76P69				
ILLINOIS FED. AID PROJECT				

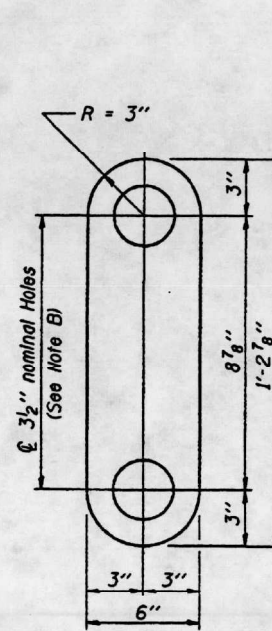
* DISTRICT B PIN AND LINK 2000-1



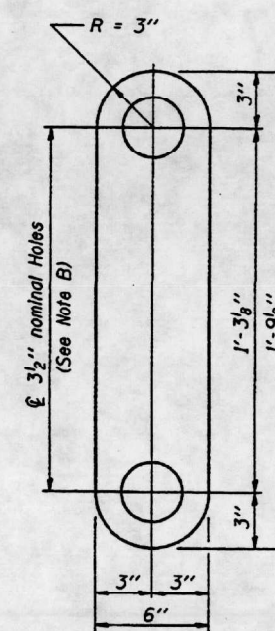
**ELEVATION AT EXISTING SPAN 4
PIN ASSEMBLY FOR EXTERIOR BEAMS**
(Looking North)



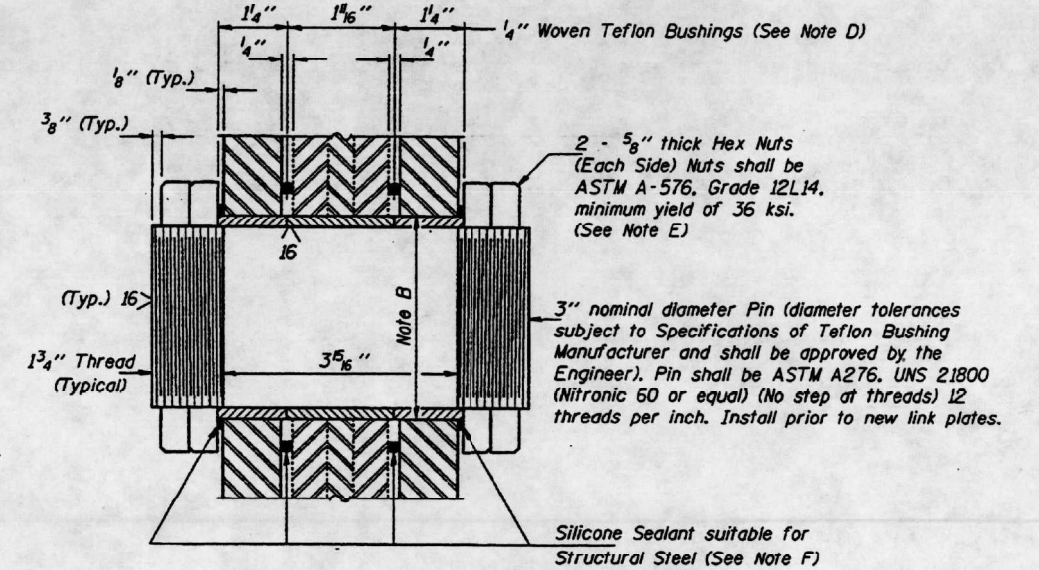
**ELEVATION AT EXISTING SPAN 4
PIN ASSEMBLY FOR INTERIOR BEAMS**
(Looking North)



**LINK PLATE FOR
INTERIOR BEAMS**
(20 Required)



**LINK PLATE FOR
EXTERIOR BEAMS**
(4 Required)



SECTION THRU PIN
(24 Required)

Note A:
Existing welds shall be inspected for cracks using liquid dye penetrant or magnetic particle testing. Any cracks that are found shall be identified and reported to the Bureau of Bridges and Structures for further disposition. Clean and paint before installing new link plates.

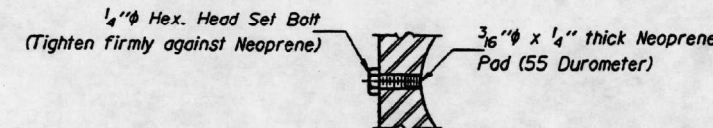
Note B:
Bore diameter for bushing in link plate, existing webs and web reinforcement plates shall correspond to bushing manufacturer's allowable tolerances for proper functioning. Hole diameter may be adjusted to allow use of stock bushings.

Note C:
Inside face of new link plates shall receive first field coat in shop. The primer shall pass the M.E.K. Rub Test before the first field coat is applied.

Note D:
Actual bushing thickness per manufacturer's specifications. 1/4" is approximate. Bushings shall be a self lubricating filament wound epoxy matrix backed Duralon Bearing, metal backed Fiber Glide Bearing or equivalent. No primer or grease shall be allowed on bushings. Bushings shall be suitable for dynamic loads of 20,000 psi.

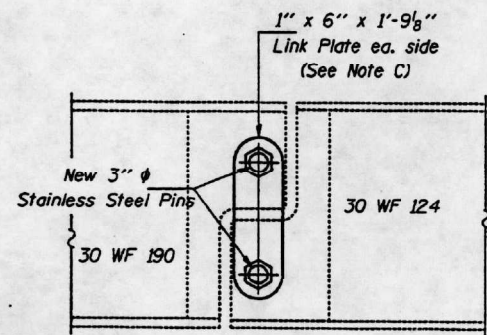
Note E:
Tighten inside nuts to bring all bushings into firm contact, then back off 1/4 turn and tighten outer nuts and set bolts.

Note F:
Apply 3/8" bead to face of the web reinforcing plates approximately 1/2" from bushing immediately before installing new link plates. Place sealant around nuts after installation. Sealant shall be suitable for prolonged exterior exposure without losing flexibility or adhesion to painted steel surfaces. Proposed products shall be subject to Department's acceptance based on documented testing or other evidence.

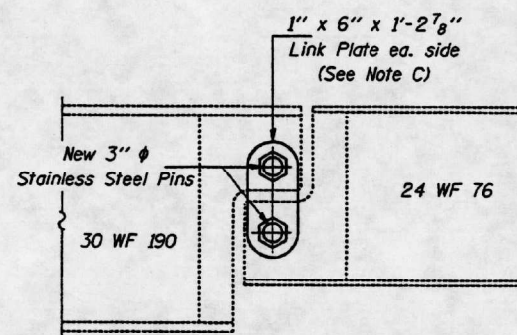


DETAIL A

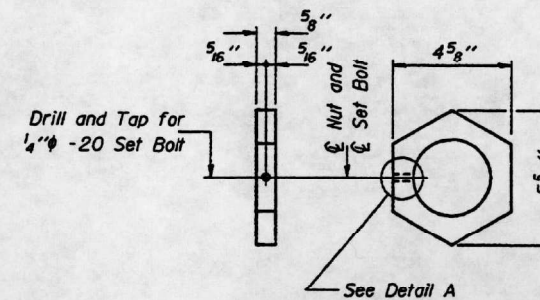
Set Bolts shall conform to the requirements of ASTM A 307 and shall be galvanized according to AASHTO M 232.



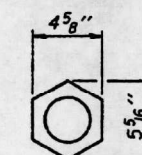
**ELEVATION AT NEW SPAN 4
PIN ASSEMBLY FOR EXTERIOR BEAMS**
(Looking North)



**ELEVATION AT NEW SPAN 4
PIN ASSEMBLY FOR INTERIOR BEAMS**
(Looking North)



EXTERIOR NUT DETAIL
(48 Required)



INTERIOR NUT DETAIL
(48 Required)

MAXIMUM REACTIONS AT PIN (SPAN 4)

R _l	(K)	12.9
R _t	(K)	22.9
Imp.	(K)	6.9
R (Total)	(K)	42.9

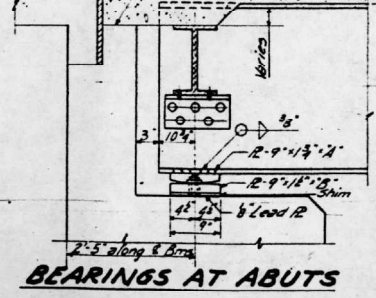
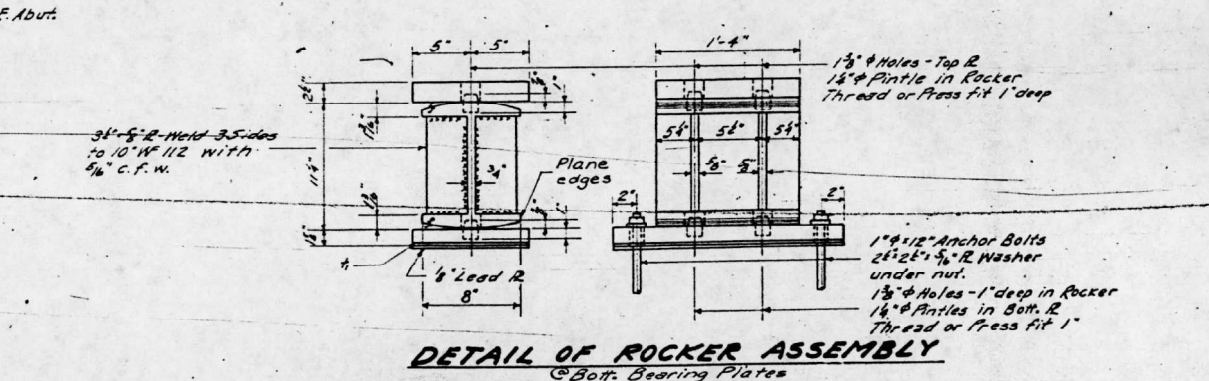
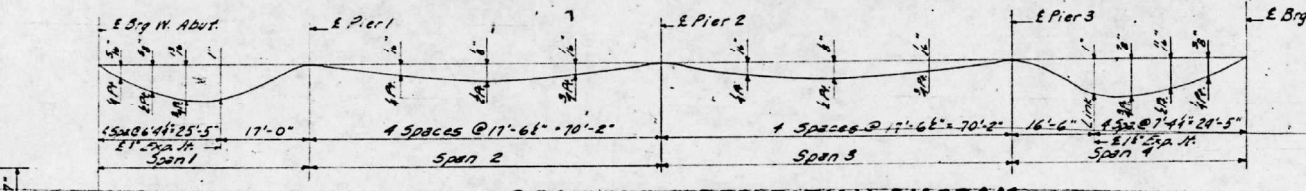
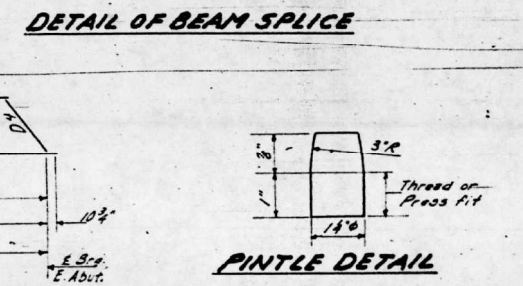
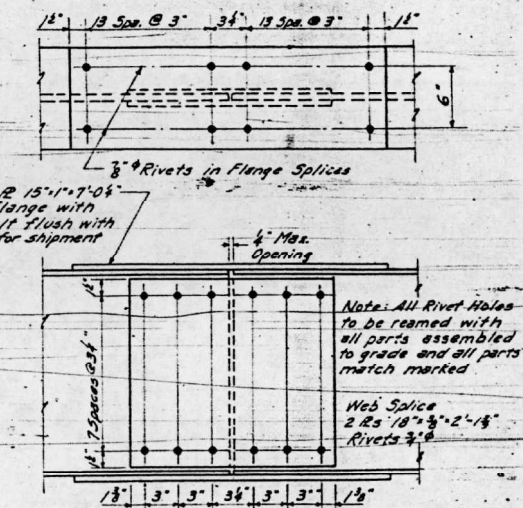
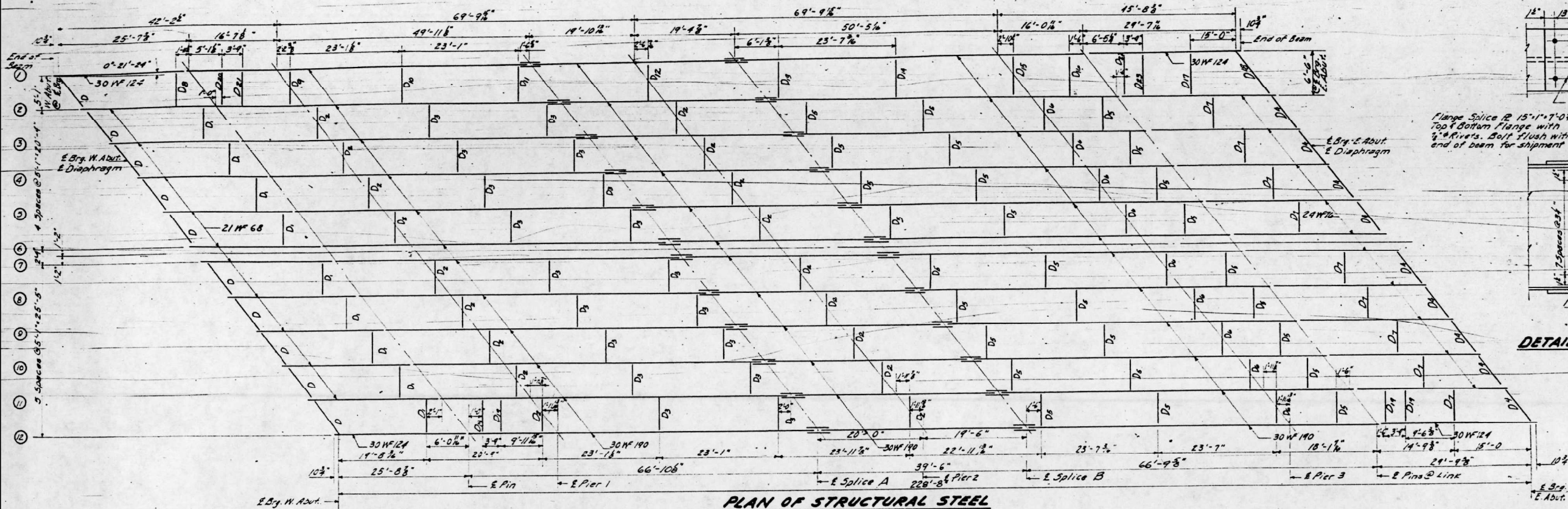
FOR INFORMATIONAL USE ONLY

DESIGNED	R.J.C.	DECEMBER 29, 1999
CHECKED	K.P.S.	EXAMINED <i>John A. Morris</i> ENGINEER OF STRUCTURAL SERVICES
DRAWN	D-erbert	PASSED
CHECKED	R.J.C. V.H.V.	ENGINEER OF BRIDGES AND STRUCTURES

PIN & LINK PLATE REPLACEMENT
F.A.U. RT. 9251 SEC. 28-2HBR
ST. CLAIR COUNTY
STATION 50+00.00
S.N. 082-0115

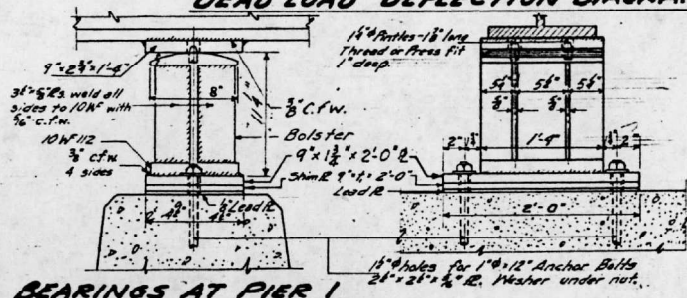
MODEL: Default
 FILE NAME: p:\miller\p\miller\dot\Documents\DOT - Office\District 8\Projects\082-0115\082-0115\DOT\082-0115\082-0115-0115.dwg
 PROJECT: 082-0115
 SHEET: 15 OF 15
 DATE: 7/20/2021

USER NAME = millerrj	DESIGNED -	REVISED -	STATE OF ILLINOIS DEPARTMENT OF TRANSPORTATION	PLAN & ELEVATION	F.A.U. RTE. 9251	SECTION 28-2HB-BP-1	COUNTY ST. CLAIR	TOTAL SHEETS 19	SHEET NO. 8
PLOT SCALE = 100,0000' / in.	CHECKED -	REVISED -	SCALE: NTS	SHEET 3 OF 8 SHEETS	STA.	TO STA.	CONTRACT NO. 76P69		
PLOT DATE = 7/20/2021	DATE -	REVISED -	ILLINOIS FED. AID PROJECT						



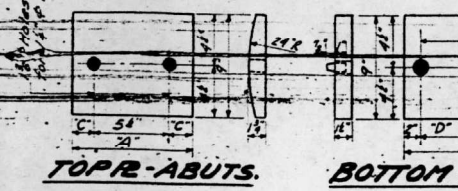
R DIMENSIONS AT ABUTS.

Location	A	B	C	D
Beams 2 full incl. West Abutment	9' 1"	5'	18'	3'
Beams 2 full incl. East Abutment	10' 1"	6'	24'	4'
Beams 11/2 C.F.W. Abutments	11'	7'	3'	5'



SHIM TABLE
T, Dimension @ Beams (inches)

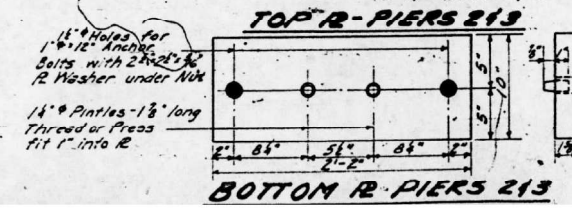
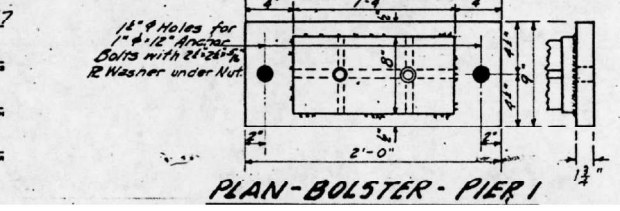
Location	Bms	1	2	3	4	5	6	7	8	9	10	11	12
W. Abutment		0	0	0	0	0	0	0	0	0	0	0	0
Pier 1		0	0	0	0	0	0	0	0	0	0	0	0
Pier 2		0	0	0	0	0	0	0	0	0	0	0	0
Pier 3		0	0	0	0	0	0	0	0	0	0	0	0
E. Abutment		0	0	0	0	0	0	0	0	0	0	0	0



DESIGNED: J. Kellogg
CHECKED: Abraham P. Wood
DRAWN: M. Kelly
CHECKED: Abraham P. Wood

EXAMINED: M. Stinson
PASSED: E. Stinson
APPROVED: R. Bartelme

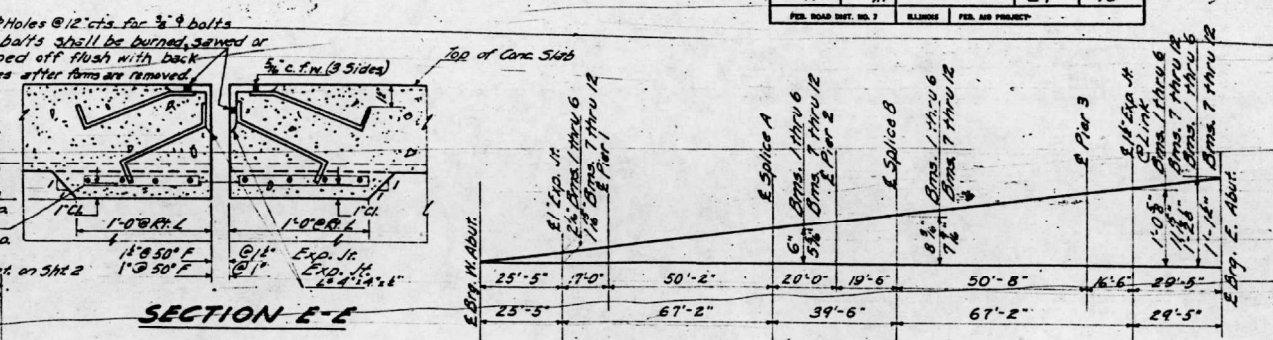
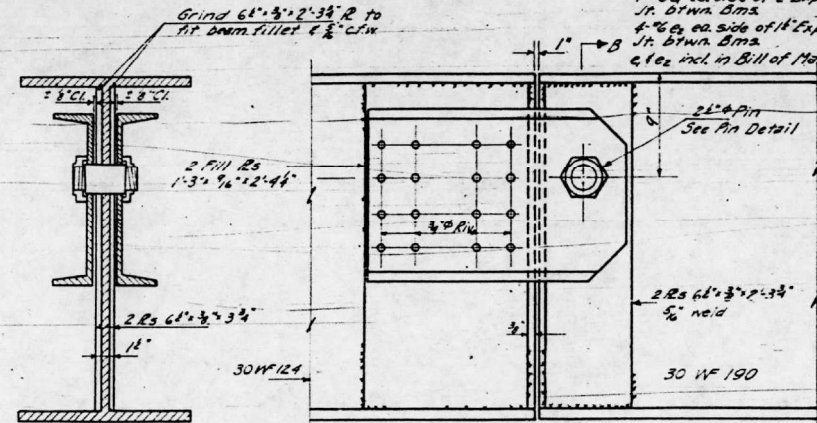
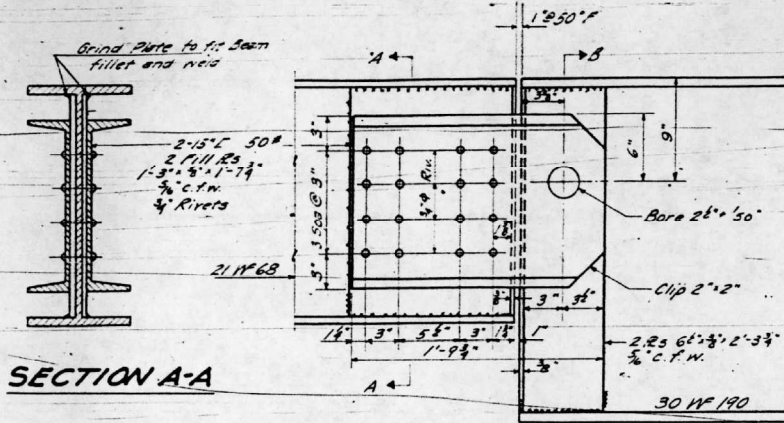
DATE: July 21, 1957



FOR INFORMATIONAL USE ONLY

**STRUCTURAL STEEL LAYOUT
GRADE SEPARATION**
MAIN LINE F.A. RT. 14 SEC. 28 2HF. 10
UNDER STA. 50+00 LINES E.T.
ST. CLAIR COUNTY
STATION 50+00

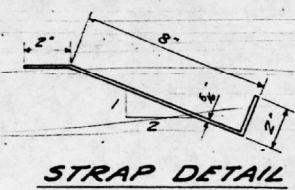
IL 13 SN 082-0115(WB/EB)



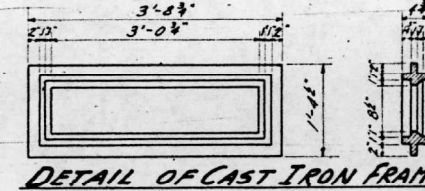
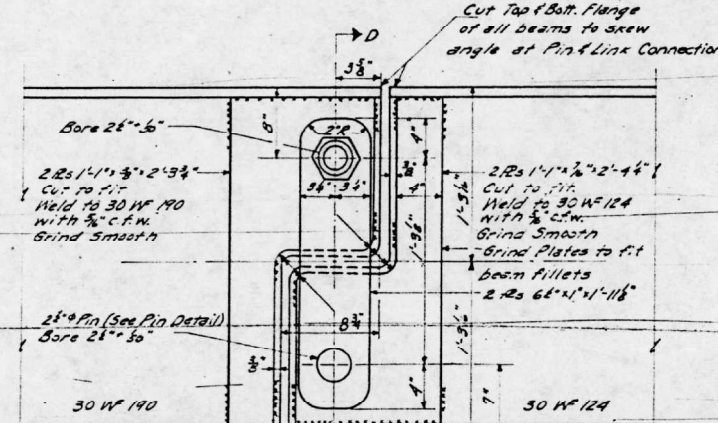
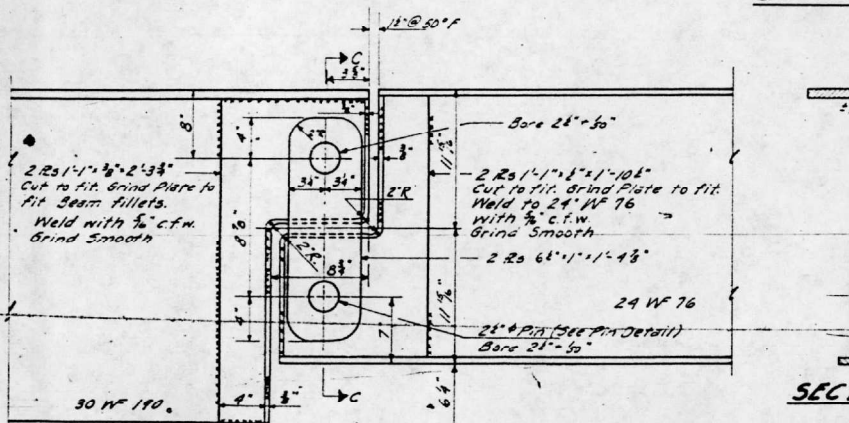
FABRICATION DIAGRAM

TABLE OF ELEVATIONS-TOP OF BEAMS

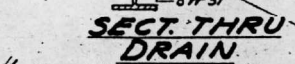
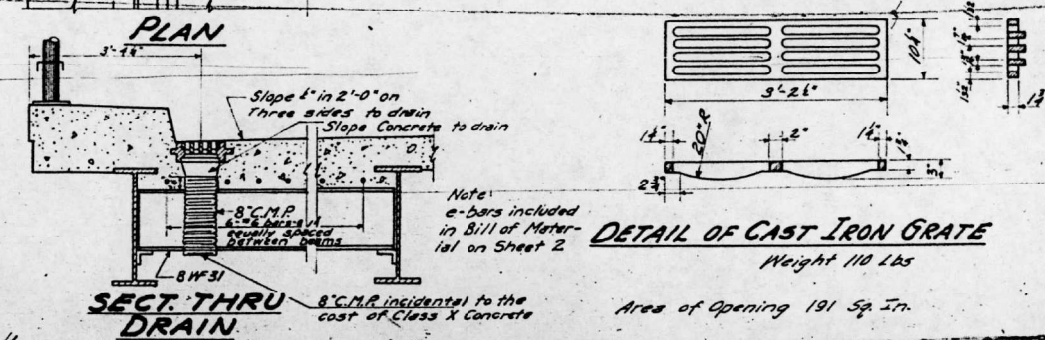
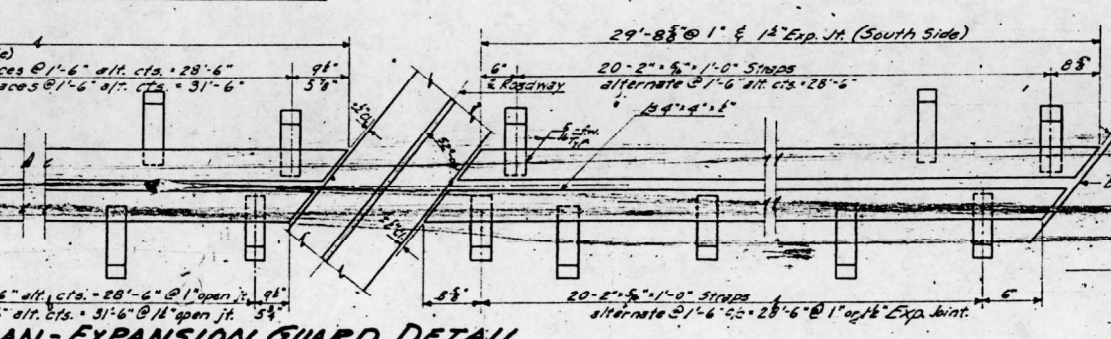
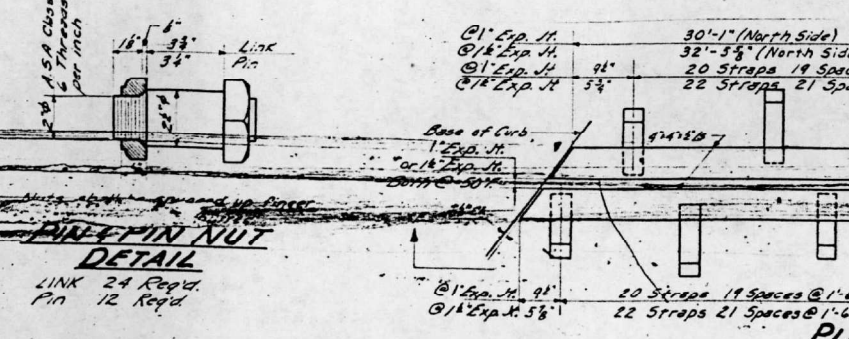
Location	Beam 1	2	3	4	5	6
E. Brg. W. Abut.	577.28	577.35	577.42	577.40	577.56	577.63
E. Pin	577.45	577.52	577.60	577.67	577.74	577.80
E. Splice 'A'	577.78	577.85	577.92	577.99	578.06	578.13
E. Splice 'B'	577.95	578.03	578.10	578.17	578.24	578.31
E. Link	578.32	578.40	578.47	578.54	578.61	578.67
E. Brg. E. Abut.	578.46	578.53	578.60	578.68	578.74	578.81
Location	Beam 7	8	9	10	11	12
E. Brg. W. Abut.	577.64	577.64	577.62	577.60	577.59	577.57
E. Pin	577.80	577.80	577.78	577.76	577.75	577.73
E. Splice 'A'	578.09	578.09	578.07	578.05	578.03	578.02
E. Splice 'B'	578.27	578.27	578.25	578.23	578.22	578.20
E. Link	578.63	578.63	578.62	578.60	578.58	578.57
E. Brg. E. Abut.	578.77	578.77	578.75	578.73	578.71	578.70



DETAILS AT PIN



DETAILS AT LINK



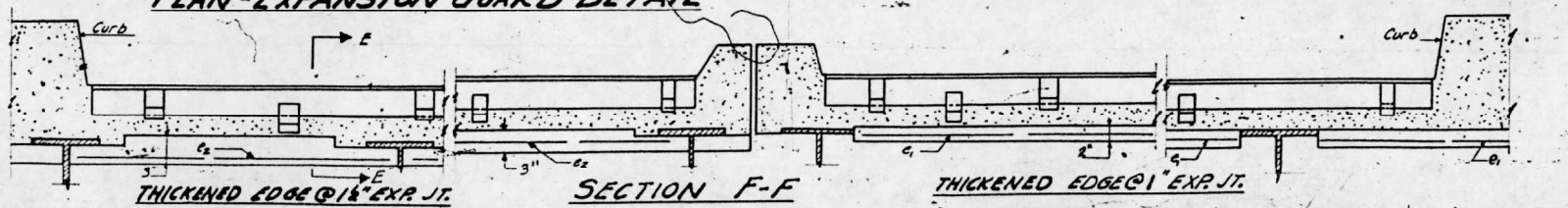
Note: Expansion guards shall be fabricated and erected in accordance with Article 51.12(d) of the Standard Specifications. All surfaces shall receive two shop coats of lead paint except the top surface. The straps shall not be painted. Expansion guards complete shall be included in the quantity, 'Structural Steel'. The weight of the Expansion Guards complete is 3,470 lbs. and is included in the Total Bill of Material on Sheet No. 1.

FOR INFORMATIONAL USE ONLY

DESIGNED: J. Kellogg
CHECKED: Abraham P. Nord
DRAWN: C. Phillip Brown
CHECKED: Abraham P. Nord

EXAMINED: [Signature]
PASSED: [Signature]
APPROVED: [Signature]

JUNE 21 19 57



FRAME-PIN-LINK DETAILS
GRADE SEPARATION
MAINLINE F.A. RT. 14 - SECTION 28-2HF, HB
UNDER STATION 50+00 LINES E.Y.F.
ST. CLAIR COUNTY
STATION 50+00

IL 13 SN 082-0115(WB/EB)

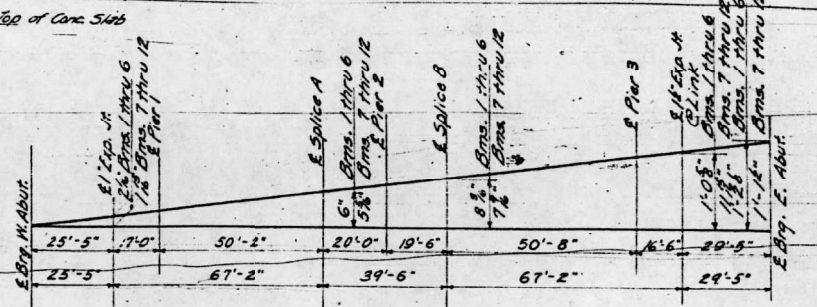
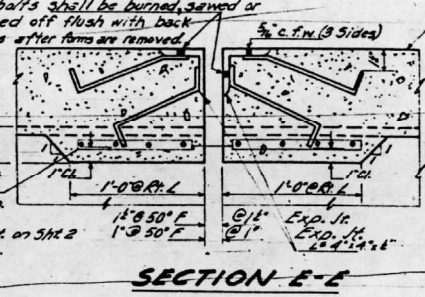
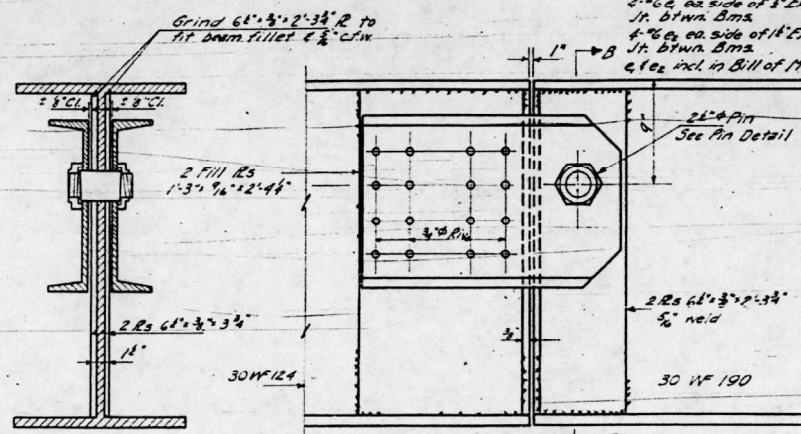
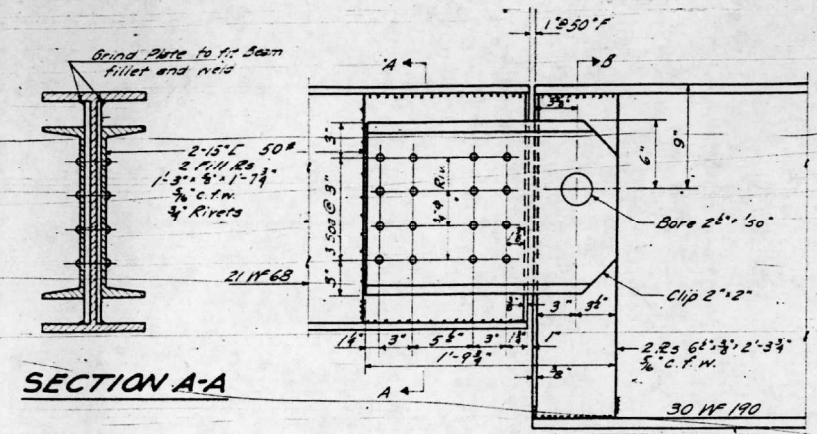


TABLE OF ELEVATIONS-TOP OF BEAMS

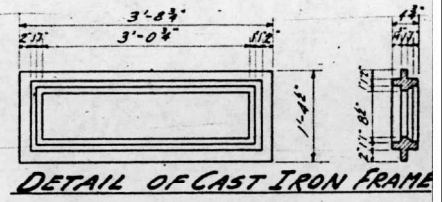
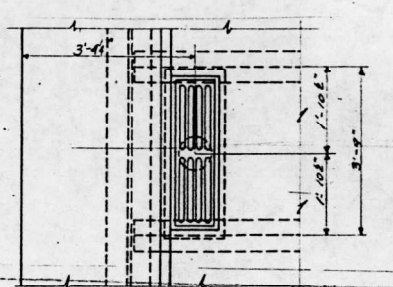
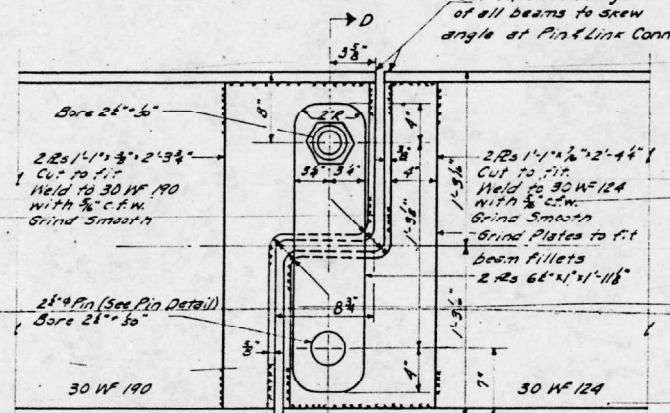
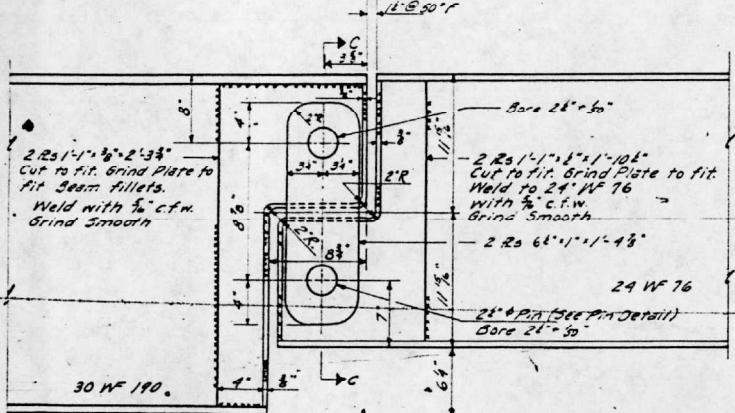
Location	Beam	1	2	3	4	5	6
E. Brg. W. Abut.		577.23	577.55	577.42	577.90	577.56	577.63
E. Pin		577.45	577.52	577.60	577.67	577.74	577.80
E. Splice A		577.78	577.85	577.92	577.99	578.06	578.13
E. Splice B		577.95	578.03	578.10	578.17	578.24	578.31
E. Link		578.32	578.40	578.47	578.54	578.61	578.67
E. Brg. E. Abut.		578.46	578.53	578.60	578.68	578.74	578.81
Location	Beam	7	8	9	10	11	12
E. Brg. W. Abut.		577.64	577.64	577.62	577.60	577.59	577.57
E. Pin		577.80	577.80	577.78	577.76	577.75	577.73
E. Splice A		578.05	578.09	578.07	578.05	578.03	578.02
E. Splice B		578.21	578.21	578.25	578.23	578.22	578.20
E. Link		578.63	578.63	578.62	578.60	578.58	578.57
E. Brg. E. Abut.		578.77	578.77	578.75	578.73	578.71	578.70

BEAMS 2 TO 11 INCLUSIVE

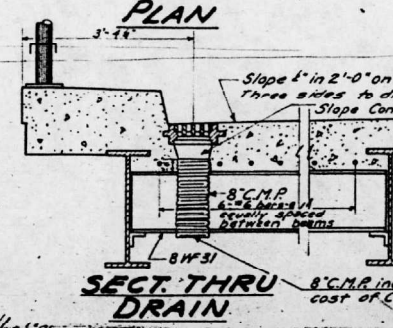
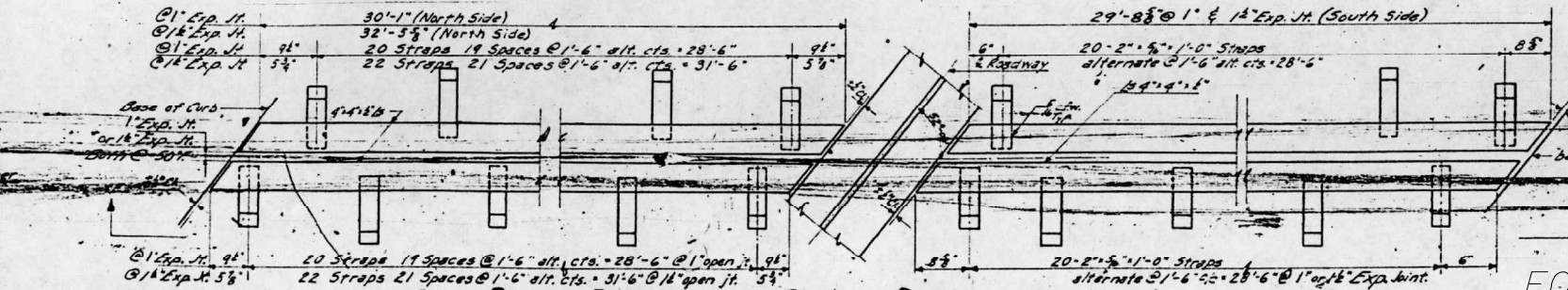
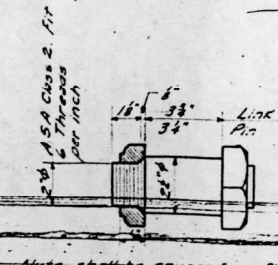
SECTION B-B

BEAMS 14 1/2
For dimensions not shown
See details of Beams 2 to 11 Incl.

DETAILS AT PIN



DETAILS AT LINK

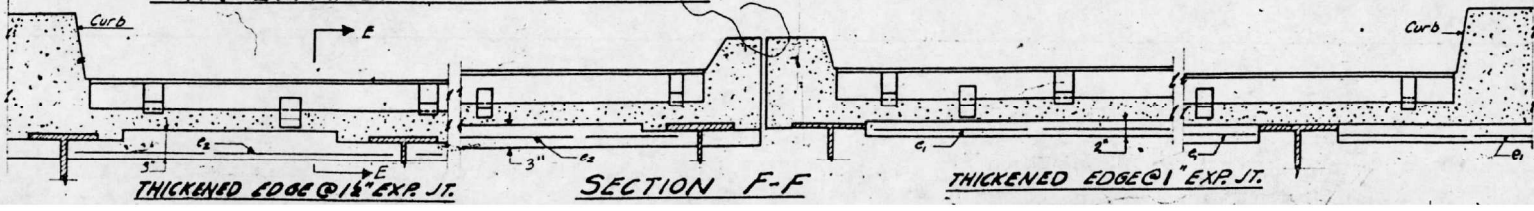


Note:
Expansion guards shall be fabricated and erected in accordance with Article 51.12 (d) of the Standard Specifications.
All surfaces shall receive two shop coats of red lead paint except the top surfaces. The strips shall not be painted.
Expansion guards complete shall be included in the quantity, "Structural Steel." The weight of the Expansion Guards complete is 3,470 lbs. and is included in the Total Bill of Material on Sheet No. 1.

FOR INFORMATIONAL USE ONLY

DESIGNED: J. Kellogg
CHECKED: Abraham P. Kirk
DRAWN: C. M. Phillips
CHECKED: Abraham P. Kirk

JUNE 21 1957
EXAMINED: [Signature]
PASSED: [Signature]
APPROVED: [Signature]



**FRAME-PIN-LINK DETAILS
GRADE SEPARATION
MAIN LINE FA. RT. 18 - SECTION 28-2 HB, HB
UNDER STATION 50+00 LINES E/F
ST. CLAIR COUNTY
STATION 50+00**

STATE OF ILLINOIS
DEPARTMENT OF PUBLIC WORKS & BUILDINGS
DIVISION OF HIGHWAYS

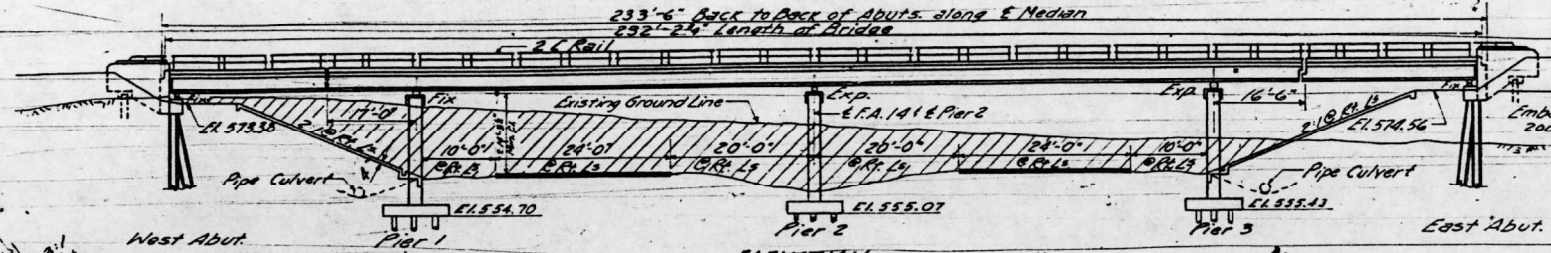
ROUTE NO.	SECTION	COUNTY	TOTAL SHEETS	SHEET NO.
14	282	St. Clair	59	13
PROJECT NO.			27	10

3.11. NAV. 14' Catalpa 47.14'
Sta. 349+20 El. 567.84
Existing Structure: None

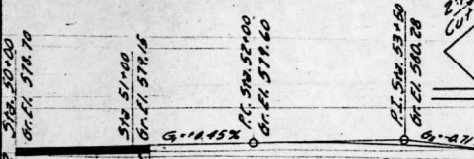
IL 13 SN 082-0115(WB/EB)

GENERAL NOTES

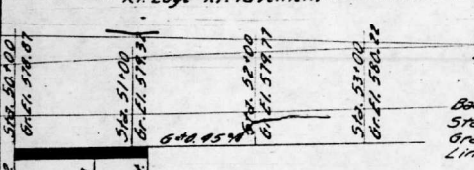
Class X Concrete shall be used throughout.
The Concrete Floor Slab shall be poured in one continuous operation between longitudinal joints (shall be finished in accordance with Article 51.1(a) of the Standard Specifications.
The Curbs and Slab outside of longitudinal construction joint, shown on cross section shall be poured monolithically.
All Transverse Construction Joints shall be made in the slab except by written permission of the Engineer.
Metal Handrail and Structural Steel shall receive one shop coat of red lead paint and two field coats of aluminum paint after inspection by the Illinois Division of Highways. See Articles 51.1 to 51.3 inclusive of the Standard Specifications.
Rivets; 1/2" Open Holes shall be used for all connections unless noted.
All I Beam Splices shall be sub punched 2" and reamed to proper size. Assemble all beams in shop in proper position, with or without diaphragms in place, for inspection.
Field connections riveted, except as noted or specified.
High Tensile Strength Bolts may be used in place of field rivets. See Special Provisions.
All Deckers, Choring As, Lead As, Shim As, Pintles and Anchor Bolts shall be fabricated and installed in accordance with Article 51.19 of the Standard Specifications and are included for payment as Structural Steel. Estimated Weight of this steel is 12,870 lbs.
Expansion Guards shall be fabricated and erected in accordance with Article 51.12(a) of the Standard Specs.
All Metal Handrail, including All Post Anchors, is included for payment as Metal Handrail. The number of linear feet is measured and based on the rail.
The Contract Unit Price for Metal Handrail includes installing and painting it in place, for inspection.
Railings shall be adjusted to true alignment after curbs have been poured. All rail posts shall be vertical.
The Contractor shall drive 1 concrete pile of each abutment in a permanent location and limit the depth of the pile to the depth of the structure by the Engineer before placing the remaining piles.
Welding shall comply with Article 55.4(a) of the Standard Specifications.
Anchor Bolts shall be set before riveting diaphragms over abutments and piers.



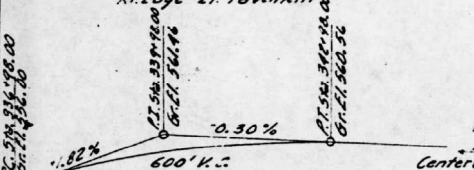
GRADE PROFILE - LINES 217'-STA. 50+00 BACK



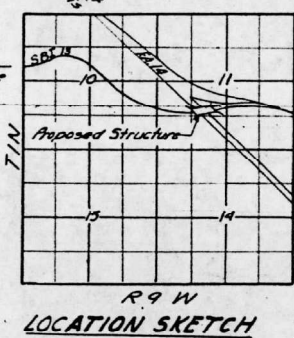
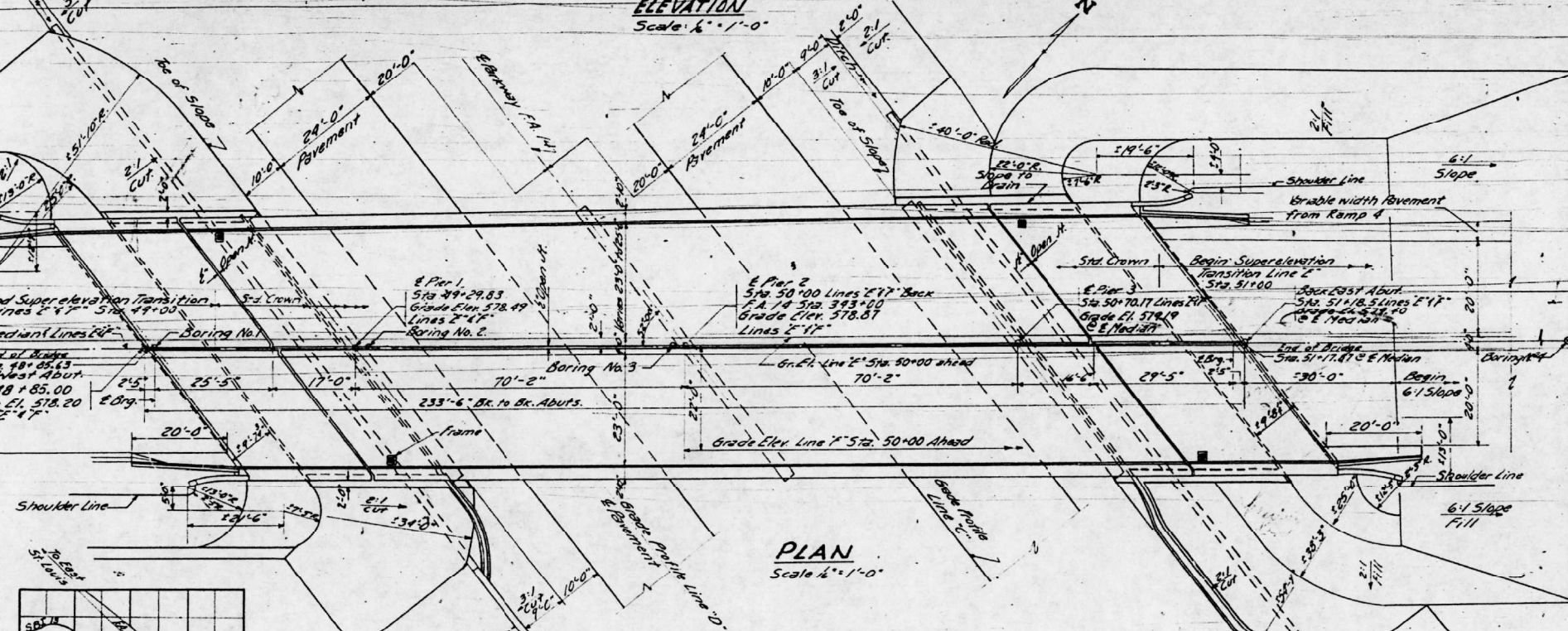
GRADE PROFILE - LINE 1'-STA. 50+00 AHEAD



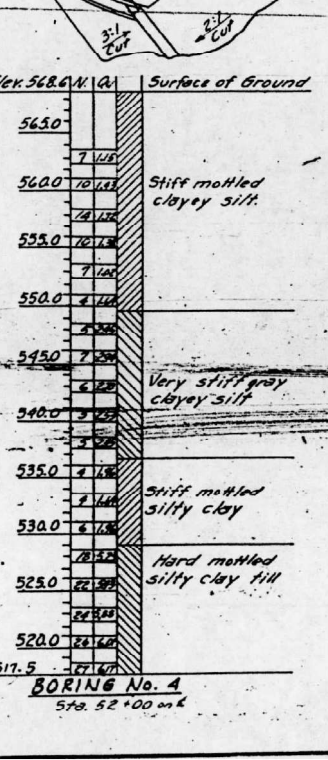
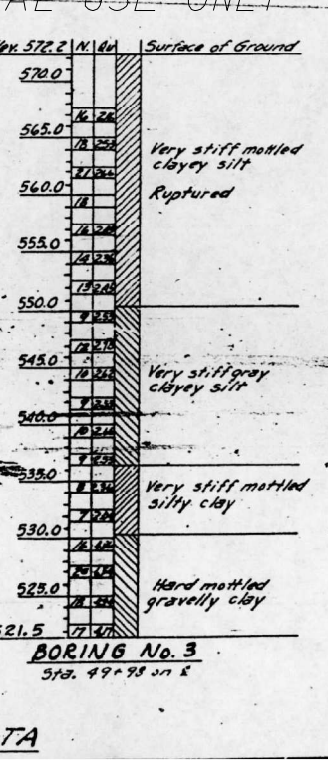
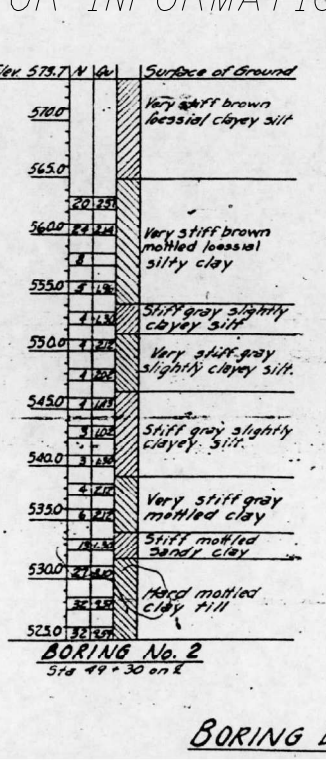
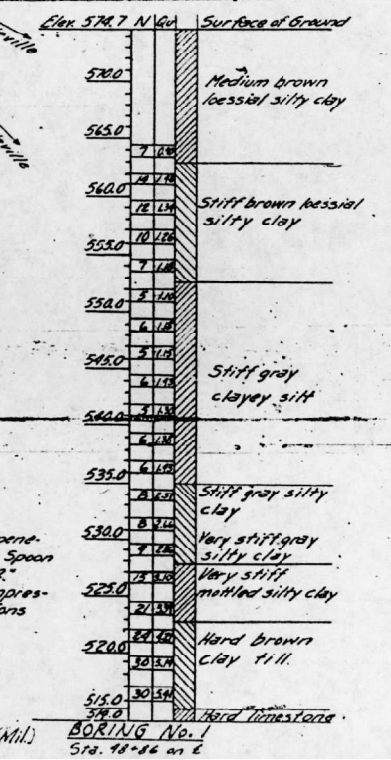
GRADE PROFILE - LINE 2'-STA. 50+00 AHEAD



GRADE PROFILE - LINE C



STRESSES
f_c 1400 psi. (Super)
f_c 820 psi. (Sub.)
f_s 20,000 psi. (Reinf.)
f_s 18,000 psi. (Struct.)
n 10



FOR INFORMATIONAL USE ONLY

TOTAL BILL OF MATERIAL - SECTION 28-2HF

ITEM	SUPER	SUB	TOTAL
Furnishing Structural Steel Lbs.	537,970		537,970
Furnishing Metal Handrail Lin. Ft.	492		492

TOTAL BILL OF MATERIAL - SECTION 28-2HB

ITEM	SUPER	SUB	TOTAL
Class X Concrete Cu. Yds.	3507	454.6	785.5
Reinforcement Bars Lbs.	65,980	37,860	103,340
Erecting Structural Steel Lbs.	537,970		537,970
Name Plate Ea.	1		1
Slope Wall Sq. Yds.		660	660
Concrete Piles Lin. Ft.	1100		1100
Test Piles (Concrete Piles) Ea.	2		2
Crossed Piles Lbs. Ft.	4130		4130
Test Piles (Timber) Ea.	2		2
Class A Excav. for Structure Cu. Yds.		520	520
Cast Iron Frames Ea.	4		4
Erecting Metal Handrail Lin. Ft.	492		492

GENERAL PLAN & ELEVATION

F.A. PROJECT U-110(25)
GRADE SEPARATION
MAIN LINE F.A. RT. 14 - SECTION 28-2HF, HB
UNDER STA. 50+00 - LINES 217'
ST. CLAIR COUNTY
STATION 50+00

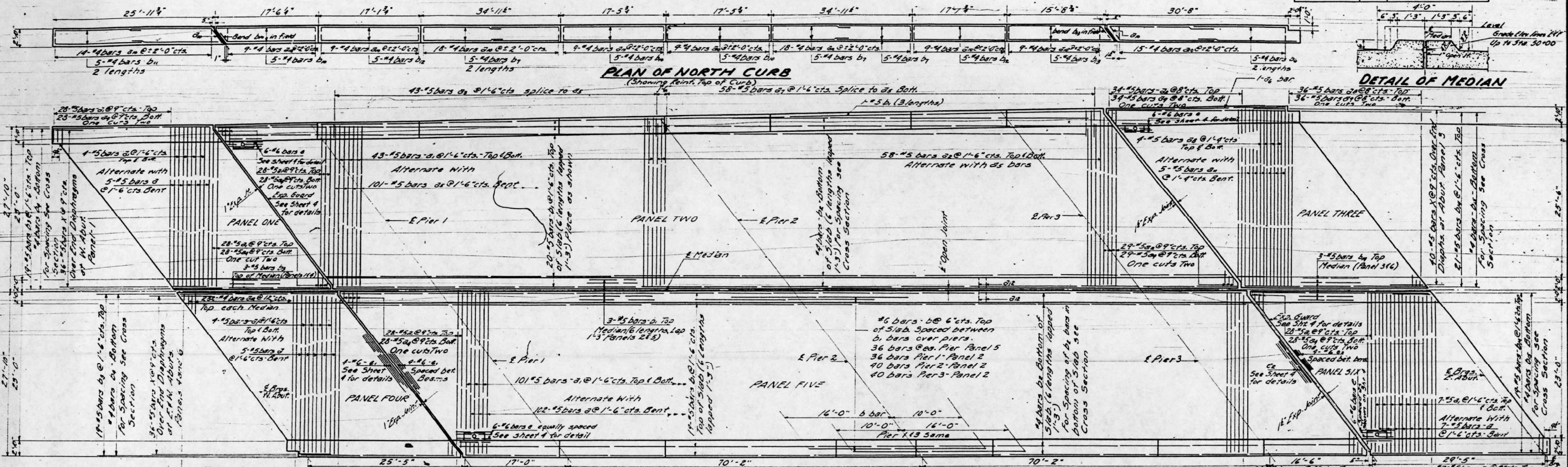
DESIGNED: J. Kelley
CHECKED: A. P. Wood
DRAWN: C. M. Kelly, B. Brown
CHECKED: A. P. Wood
EXAMINED: M. P. ...
PASSED: ...
APPROVED: ...

Note:
N-Blow per ft. of penetration of Sampling Spoon Wt. 350 lbs. Drop 12".
Q_u Uncentified Compressive Strength in Tons per sq. ft.
Loading H20-S16-44 (Mil.)

IL 13 SN 082-0115(WB/EB)

STATE OF ILLINOIS
DEPARTMENT OF PUBLIC WORKS & BUILDINGS
DIVISION OF HIGHWAYS

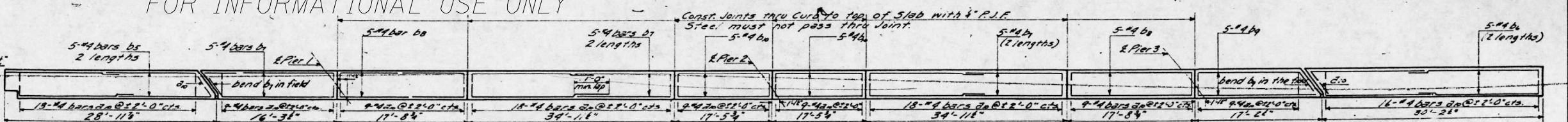
ROUTE NO.	SECTION	COUNTY	TOTAL SHEETS	SHEET NO.
13	28-2	St. Clair	59	14
			27	11



DETAIL OF MEDIAN

FOR INFORMATIONAL USE ONLY

METHOD OF DETERMINING FILLET HEIGHTS
After all structural steel has been erected elevations of the top flanges of the beams shall be taken at intervals not to exceed 10 ft. From these elevations subtract the increment of deflection for these points, determined from the D.L. Deflection diagram. The elevations so obtained subtracted from the theoretical grade elevations, minus floor thickness, equals the fillet heights above top of beam.

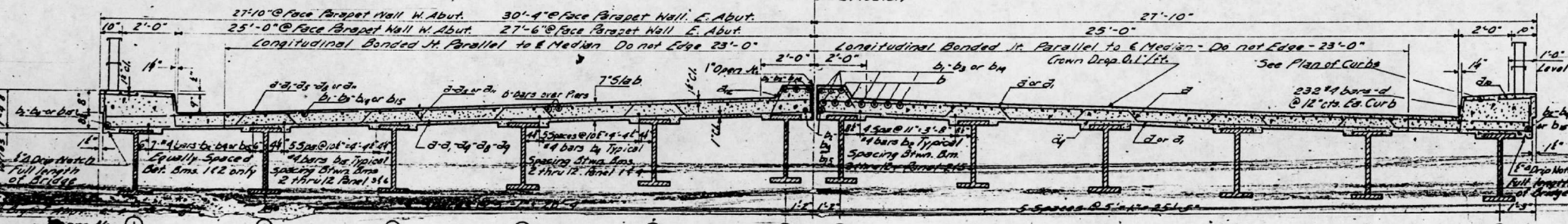


PLAN OF SOUTH CURB
(Reinf. Top of Curb)

BILL OF MATERIAL - SUPERSTRUCTURE

BAR	NR	SIZE	LENGTH	SHAPE	BAR	NR	SIZE	LENGTH	SHAPE
a	119	15	30.5	UNNU	ba	10	4	14.3	
b	444	15	27.6		bb	20	4	14.3	
c	181	15	28.9		bc	45	4	17.0	
d	43	15	3.8		bd	10	4	17.6	
e	126	15	29.7		be	5	4	12.10	
f	101	15	29.7	UNNU	bfa	25	4	17.5	
g	1	15	30.3		bfb	10	4	13.6	
h	58	15	4.2		bfc	10	4	16.9	
i	43	15	29.6		bfd	7	4	17.0	
j	35	15	31.3		bfe	46	15	30.9	
k	212	14	3.2		bfg	65	14	30.9	
l	5	15	32.9	UNNU					
m	44	15	2.9						
n	224	16	26.0						
o	273	15	30.0						
p	58	15	26.0						
q	42	15	26.0						
r	65	14	26.9						

Class X Concrete	Co. Wt.	350.7
Reinforcement Bars	Lbs.	65,480
Structural Steel	Lbs.	537,970
Metal Highrail	Lt.Ft.	492
Cast Iron Frames	Ea.	4

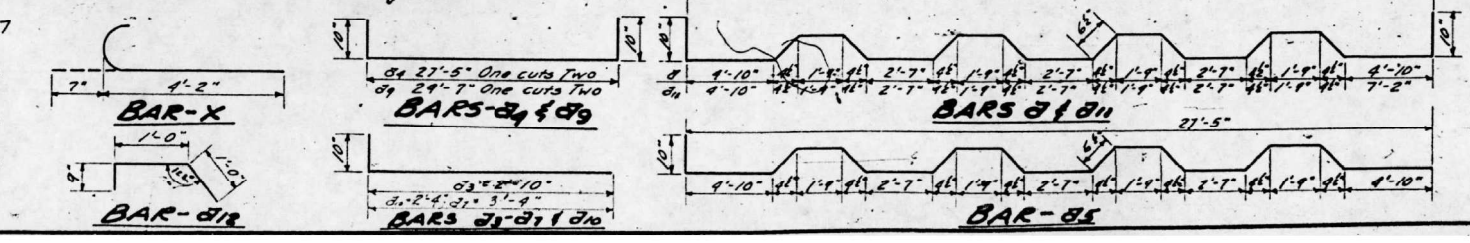


CROSS SECTION
Looking East

DESIGNED: J Kellogg
CHECKED: Abraham P. Nard
DRAWN: C. L. Kelley
CHECKED: Abraham P. Nard

EXAMINED: M. J. [Signature]
PASSED: [Signature]
APPROVED: [Signature]

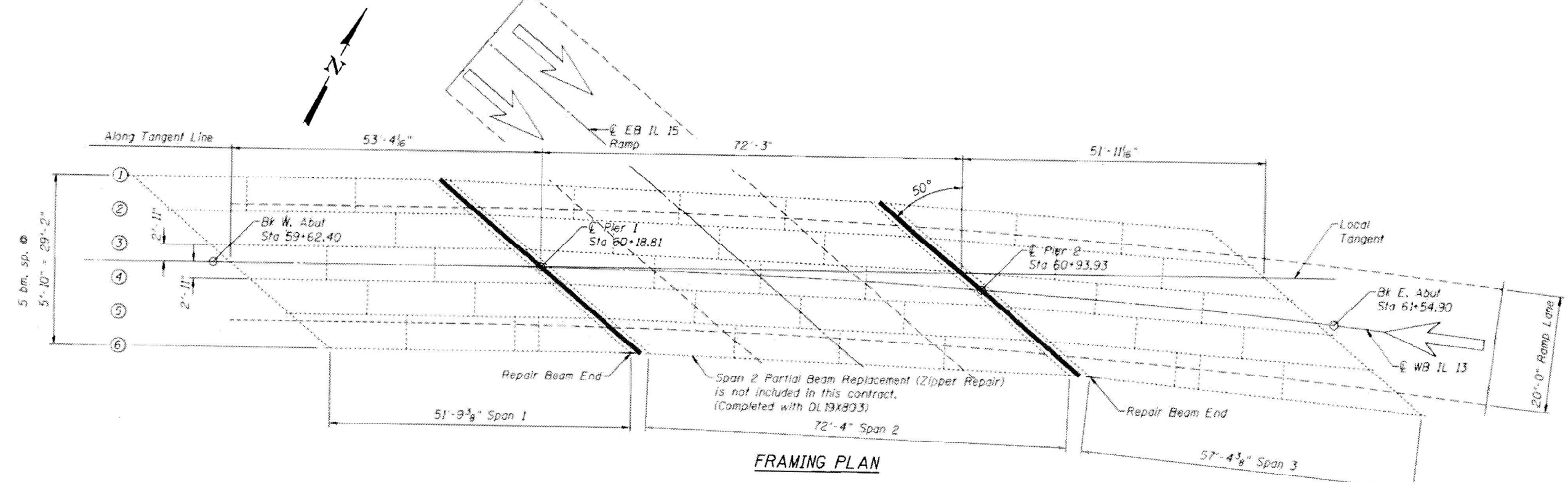
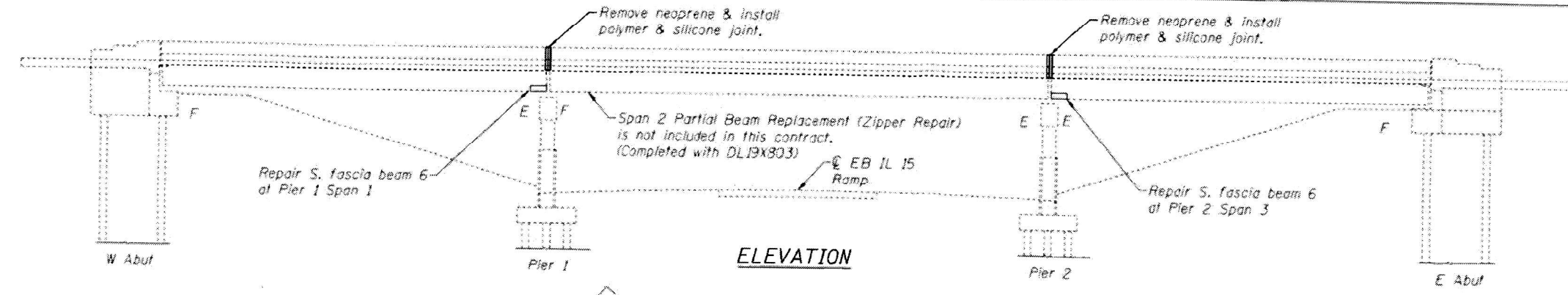
JUNE 21 1957



SUPERSTRUCTURE GRADE SEPARATION
MAIN LINE R.R. 19-SEC. 28-2HE. NB
UNDER STATION 50+00 LINES E 17'
ST. CLAIR COUNTY
STATION 50+00

INDEX OF SHEETS
 1) General Plan & Elevation
 2) Spans 1 & 3 Beam End Repairs

IL 13 SN 082-0116(WB)



GENERAL NOTES

All structural steel shall conform to AASHTO Classification M-270 Gr. 36. All structural steel, bolts, nuts, washers shall be galvanized according to AASHTO M111 or M232 as applicable. Cost included with "Structural Steel Repair".

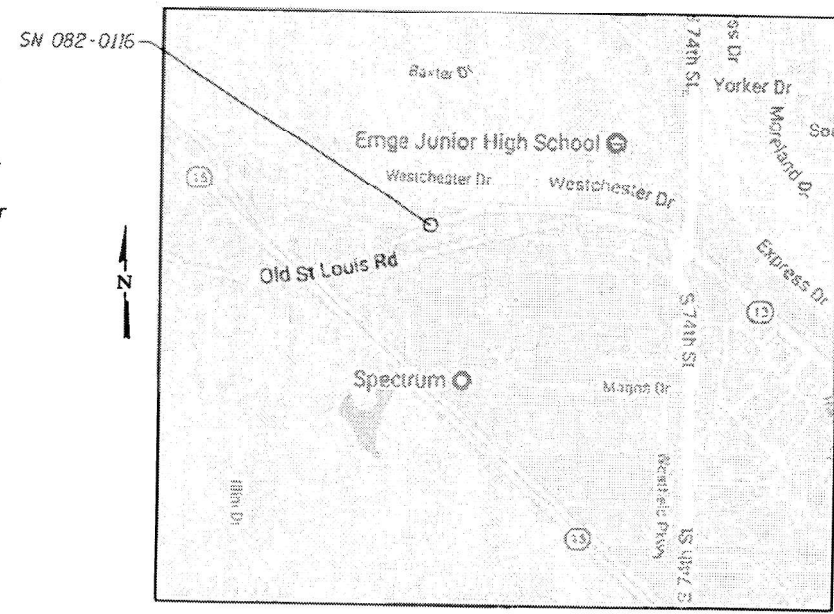
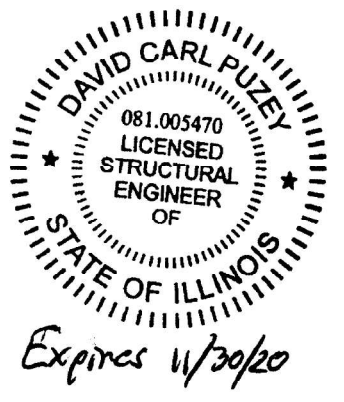
Plan dimensions and details relative to existing plans are subject to nominal construction variations. The Contractor shall field verify existing dimensions and details affecting new construction and make necessary approved adjustments prior to construction or ordering of materials. Such variations shall not be cause for additional compensation for a change in scope of the work, however, the Contractor will be paid for the quantity actually furnished at the unit price bid for the work.

Fasteners shall be high strength bolts. Bolts $\frac{3}{4}$ " \varnothing , open holes $1\frac{1}{16}$ " \varnothing , unless otherwise noted.

No field welding is permitted, except as specified in the contract documents at the existing top bearing plates.

Existing structural steel that will be in contact with new structural steel shall be cleaned and painted prior to erection as required by the special provision "Cleaning and Painting Contact Surface Areas of Existing Steel Structures".

The existing structural steel coating contains lead. The Contractor shall take appropriate precautions to deal with the presence of lead on this project.



FOR INFORMATIONAL USE ONLY

TOTAL BILL OF MATERIAL

ITEM	UNIT	TOTAL
Structural Steel Repair	Pound	320
Silicone Joint Sealer, 2"	Foot	93
Polymer Concrete	Cu. Ft.	9.6
Traffic Control & Protection, Standard 701451	L.S.	1
Traffic Control & Protection, Standard 701456	L.S.	1

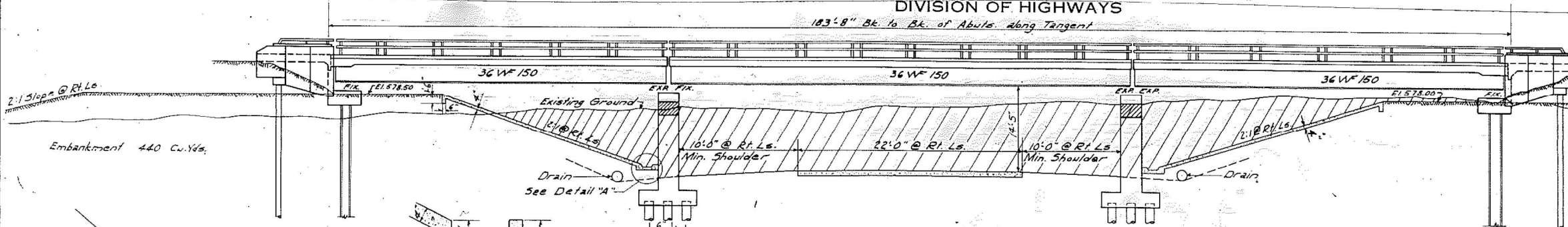
DESIGNED -		REVISOR -		SCALE: NTS		SHEET 1 OF 6 SHEETS		STA. TO STA.	
DRAWN -		REVISOR -		STATE OF ILLINOIS DEPARTMENT OF TRANSPORTATION		PLAN & ELEVATION		F.A.U. RTE. SECTION COUNTY TOTAL SHEETS SHEET NO.	
CHECKED -		REVISOR -		9251		28-2HB-BP-1		ST. CLAIR 19 14	
DATE -		REVISOR -		CONTRACT NO. 76P69		ILLINOIS FED. AID PROJECT			

B.M. R.R. Spike in Power Pole
41' R.L. of Sta. 276+12
(Existing 3 R.L. R. 13) El. 575.55

STATE OF ILLINOIS
DEPARTMENT OF PUBLIC WORKS & BUILDINGS
DIVISION OF HIGHWAYS

ROUTE NO.	SECTION	COUNTY	TOTAL SHEETS	SHEET NO.
14	28-2	St. Clair	59	23
F.A. RT. 14			27	17

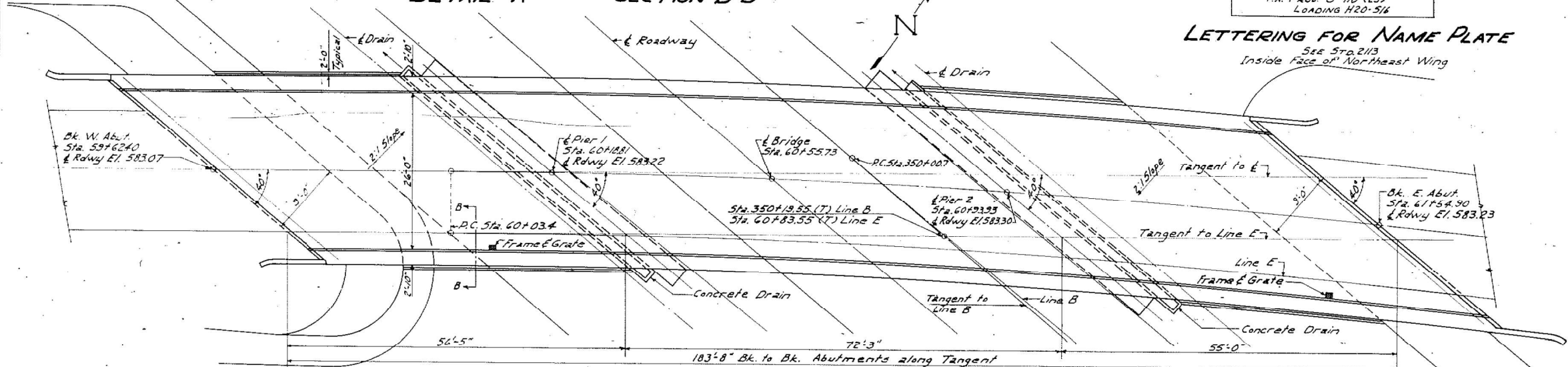
10 SHEETS



ELEVATION
Scale: 1"=10'-0"

STATION 60+55.73
BUILT 195 BY
STATE OF ILLINOIS
F.A. RT. 14 SEC. 28-2HB
F.A. PROJ. U-110 (25)
LOADING H20-516

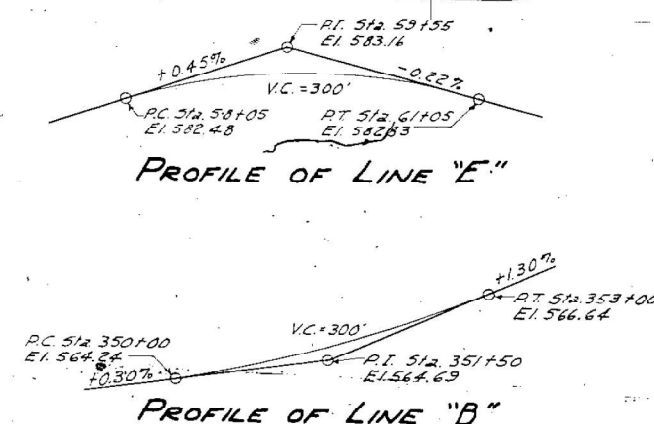
LETTERING FOR NAME PLATE
See 57a.2113
Inside face of Northeast Wing



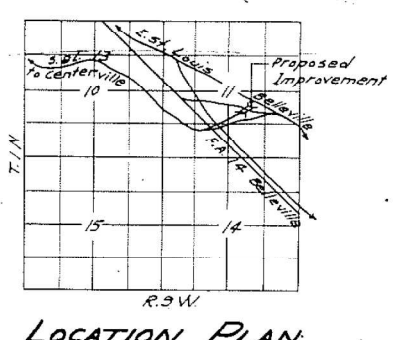
PLAN
Scale: 1"=10'-0"

GENERAL NOTES
Class X Concrete shall be used throughout.
The concrete floor slab shall be finished in accordance with Article 51.18(a) of the Std. Specs.
Slope wall shall be reinforced with welded wire fabric 6 x 6 mesh, #4 wires, weighing 38# per 100 sq. ft.
Layout of slope walls may be varied to suit ground conditions in the field, as directed by the Engineer.
Rivets 3/4" Open holes 1/2", unless noted.
Field connections, 3/4" machine bolts with kn-cock nuts or equal.
All rockers, bearing plates, lead plates, pintles and anchor bolts shall be fabricated and set in accordance with Article 51.14 of the Std. Specs. and are included for payment as Structural Steel, Est. Wt.=9354 Lbs.
Anchor bolts shall be set before riveting diaphragms over supports.
Expansion guards are included for payment as Structural Steel, Est. Wt.=4800 Lbs.
Expansion guards shall be fabricated and erected in accordance with Article 51.12(d) of the Std. Specs.
Except as otherwise provided, all structural steel shall receive one shop coat of red lead paint and two field coats of aluminum paint. See Articles 57.1 to 57.5 inclusive of the Std. Specs.
All paint shall be furnished and applied by the Contractor involved.
The contractor shall drive one concrete test pile at each abutment in a permanent location and one timber test pile in the vicinity of Pier 1 before ordering the remainder of the piles.
Granular fill filled or solid studs may be substituted for channel shear connectors at no extra cost to the State. Channel shear connectors have been included for payment as Structural Steel.

IL 13 SN 082-0116(WB)



Boring No.	Station	Surface of Ground	Soil Description
Boring No. 1	Sta. 59+62	570	Very stiff mottled loessial silty clay.
Boring No. 2	Sta. 60+19	570	Stiff mottled silty clay.
Boring No. 3	Sta. 60+93	570	Stiff mottled silty clay.
Boring No. 4	Sta. 61+52	570	Medium mottled silty clay.
		565	Med. mottled clayey silt.
		560	Stiff mottled clayey silt.
		555	Very stiff mottled clayey silt.
		550	Very stiff mottled loessial clayey silt.
		545	Stiff gray clayey silt.
		540	Stiff gray mottled clay silt.
		535	Very stiff brown mottled clay fill.
		530	Hard mottled clay fill.



LOCATION PLAN

DESIGN STRESSES
Pc = 1400 p.s.i. (Superstructure)
Ps = 800 p.s.i. (Substructure)
fs = 2000.
n = 10

CURVE DATA
P.C. = Sta. 63+96.6
D = 4'-00"
L = 767.5'
S = 1432.4'
P.T. = Sta. 67+03.4
P.C. = Sta. 67+03.4
P.T. = Sta. 67+70.9
Super. El. attained: 581.84 to Sta. 61+23
64+00 to Sta. 66+00

TOTAL BILL OF MATERIAL

Section 28-2HB	Unit	Super.	Sub.	TOTAL
Class X Concrete	Cu.Yds.	1750	2182	3932
Reinforcement Bars	Lbs.	29240	14180	43420
Erecting Structural Steel	Lbs.	203130		203130
Erecting Metal Handrail	Lin. Ft.	413		413
Name Plates	Each	1		1
Cast Iron Frames	Each	2		2
Class A Excav. for structures	Cu.Yds.		100	100
Concrete Piles	Lin. Ft.		400	400
Creasofed Piles	Lin. Ft.		1560	1560
Test Piles (Concrete)	Each	2		2
Test Piles (Timber)	Each	1		1
Slope Wall	Sq. Yds.		293	293

DESIGNED: J. Ganci
CHECKED: C. P. O.
DRAWN: J. Ganci
APPROVED: J. Ganci
JUNE 21 1957

Note: N = Blows per foot of penetration of sampling spoon. Hammer Wt = 350 lbs. Drop = 72 inches.
qc = Unconfined compressive strength in tons per square ft.

BORING DATA FOR INFORMATIONAL USE ONLY

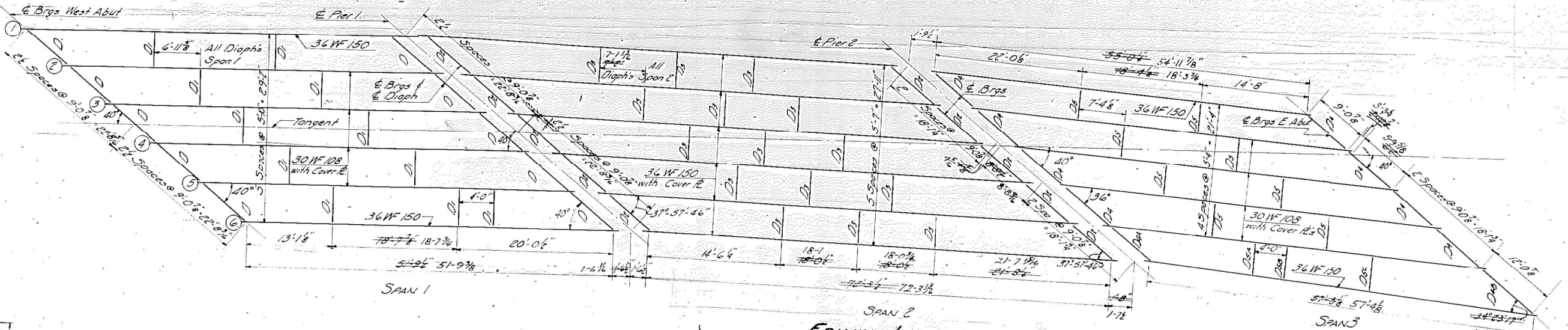
TABLE OF ELEVATIONS TOP OF BEAMS

Location	Br 1	Br 2	Br 3	Br 4	Br 5	Br 6
West Abut	582.68	582.60	582.54	582.45	582.34	582.22
E Pier 1	583.01	582.88	582.79	582.56	582.37	582.17
E Pier 2	583.91	583.09	582.85	582.60	582.33	582.04
East Abut	583.40	583.11	582.84	582.57	582.29	581.93

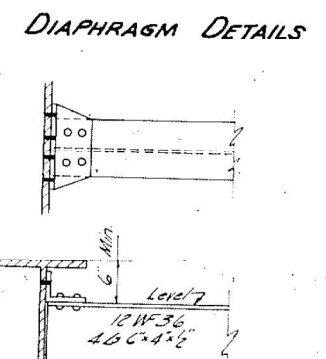
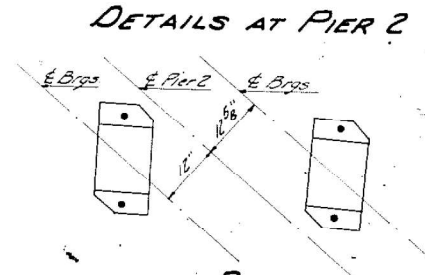
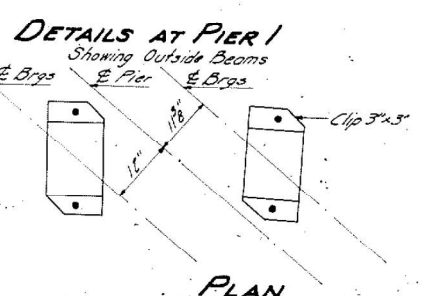
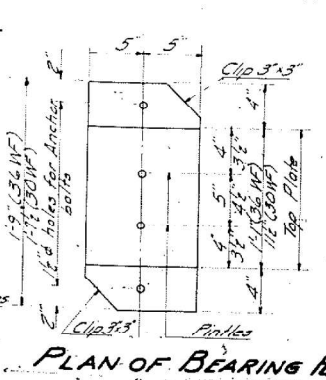
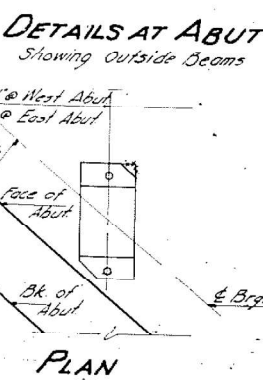
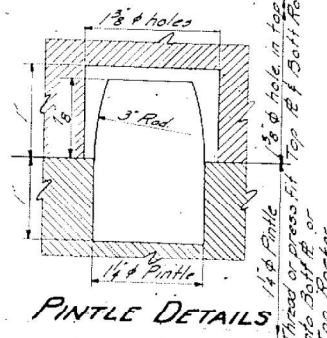
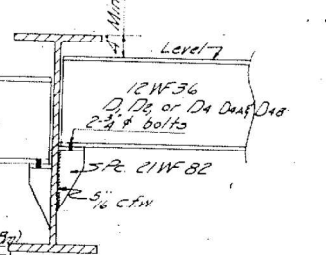
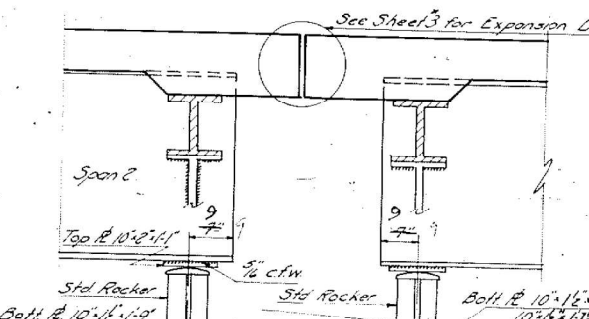
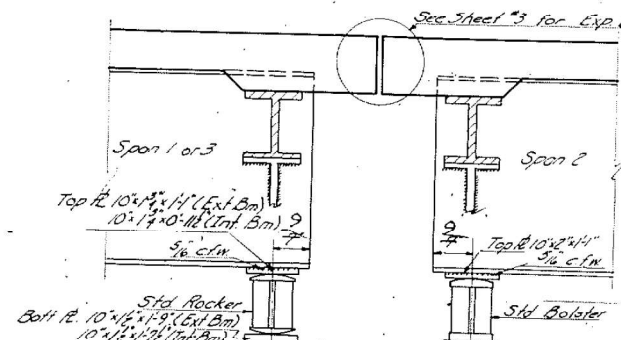
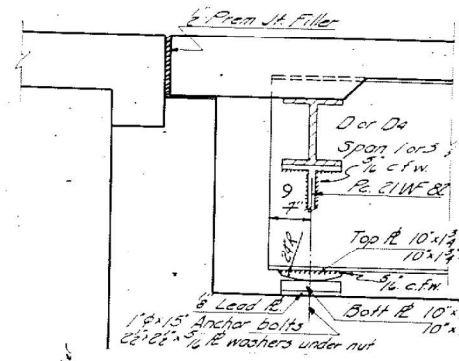
STATE OF ILLINOIS
DEPARTMENT OF PUBLIC WORKS & BUILDINGS
DIVISION OF HIGHWAYS

IL 13 SN 082-0116(WB)

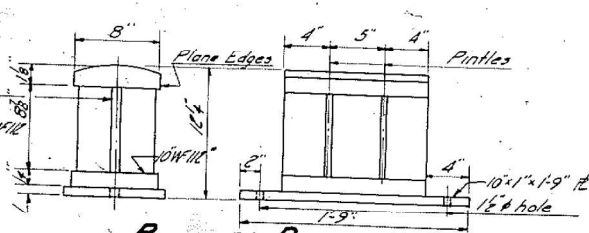
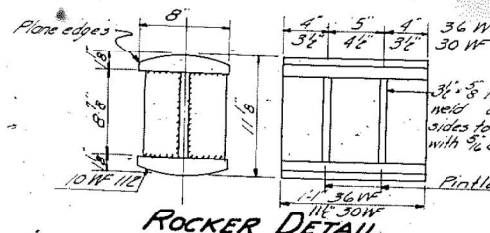
ROUTE NO.	SECTION	COUNTY	TOTAL SHEETS	SHEET NO.
14	28-2	St. Clair	59	27
FED. ROAD DIST. NO. 7	ILLINOIS	FED. AID PROJECT		10 SHEETS



CUTTING DIAGRAM
21" W82



DESIGNED	June 21 1957
CHECKED	Engineer of Bridge and Traffic Structures
DRAWN	Chief Designer
CHECKED	Chief Highway Engineer



LOCATION AND THICKNESS OF SHIM PLATES

Beam	Span	Thickness	Pier
Beam 1	Span 3	1/2"	Pier 2
Beam 6	Span 3	1/2"	Pier 2

Note: No other shims used.

Note: For details and spacing of shear connectors and for Cover & sizes and culverts see sheets 2, 3 & 4.

FOR INFORMATIONAL USE ONLY

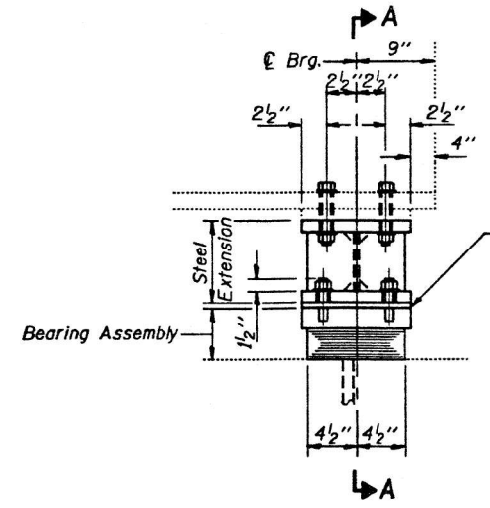
STRUCTURAL STEEL LINE E/B
F.A. RT. 14 SEC. 28-2HB
ST. CLAIR COUNTY
STA. 60+55.73

USER NAME	DESIGNED	REVISIONS	STATE OF ILLINOIS DEPARTMENT OF TRANSPORTATION	PLAN & ELEVATION	F.A.U. RTE.	SECTION	COUNTY	TOTAL SHEETS	SHEET NO.
= millerra	-	-			9251	28-2HB-BP-1	ST. CLAIR	19	16
									CONTRACT NO. 76P69
									ILLINOIS FED. AID PROJECT

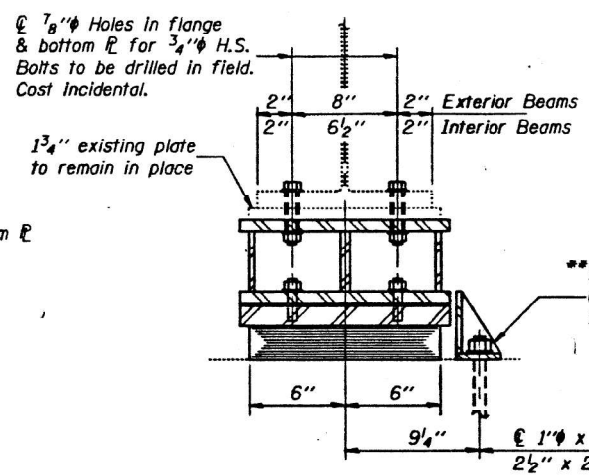
Model: Default
FILE NAME: p:\work\082-0116\DOT\Documents\DOT - Office\Drawings\Bridges\082-0116\082-0116-0116-WB-01.dwg
PROJECT: 082-0116
CADD: 082-0116-0116-WB-01.dwg
DATE: 6/21/57
SCALE: 1/8" = 1'-0"

STATE OF ILLINOIS
DEPARTMENT OF TRANSPORTATION

PROJECT NO.	SECTION	COUNTY	SHEET NO.	SHEET
F.A.U. 9251	28-2-1HBR	ST. CLAIR	08	03
SHEET NO. 14 19 SHEETS				



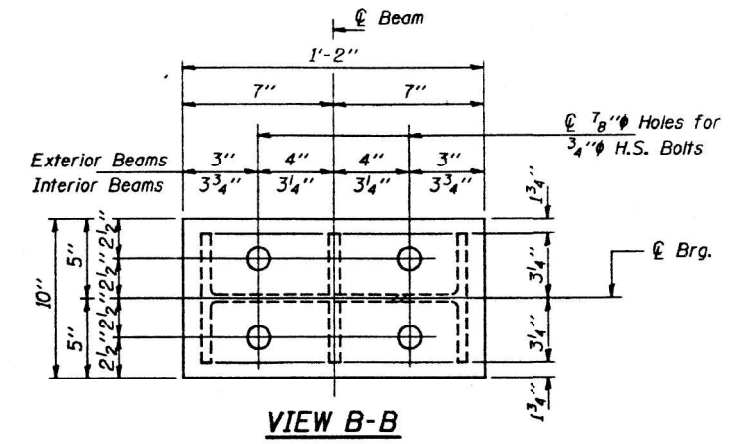
**ELEVATION AT PIER 1 - SPAN 1
AND PIER 2 - SPAN 3**
(Pier 1 - Looking North & Pier 2 - Looking South)



SECTION A-A

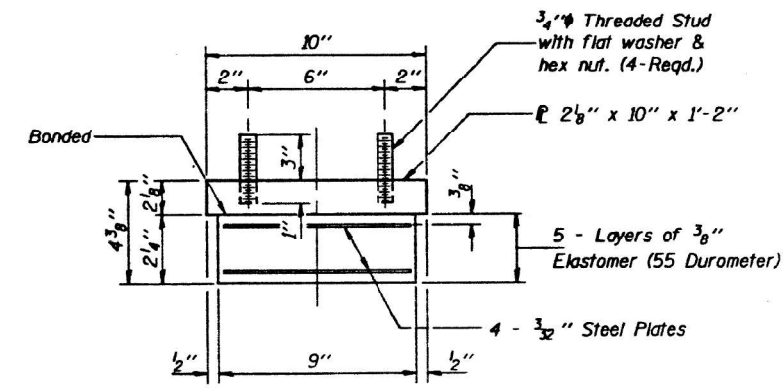
** Also for Stage I Const. provide side retainers at Beam 4, N. Side Pier 1 (Span 1) and Beam 4, S. Side Pier 2 (Span 3).

** Side Retainer (at each face of exterior beams only). See Plan below for location.



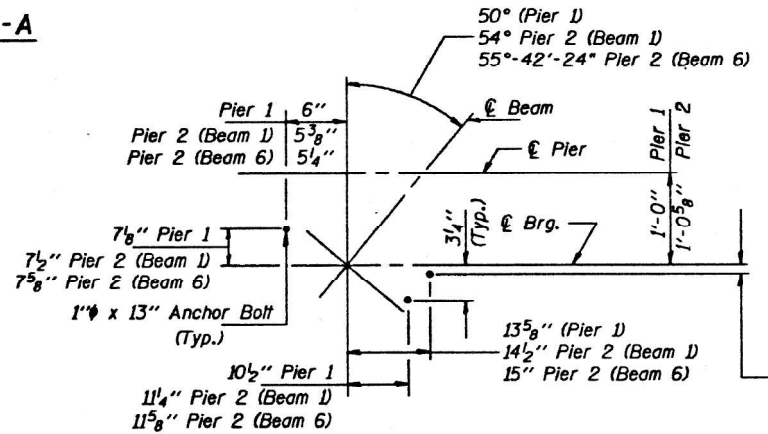
VIEW B-B

TYPE I ELASTOMERIC EXP. BRG.

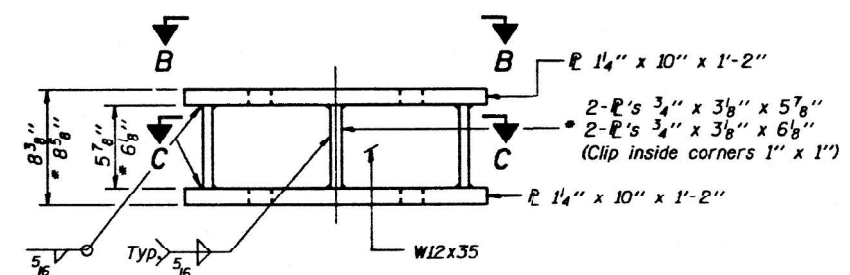


BEARING ASSEMBLY

Note: Shim plates shall not be placed under Bearing Assembly.



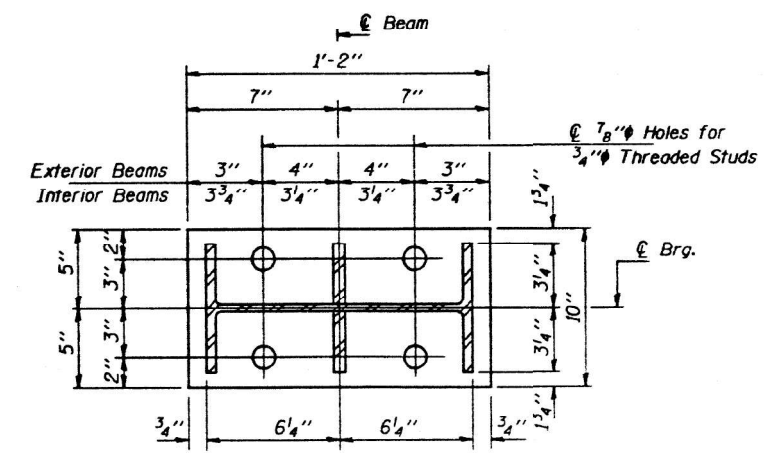
**PLAN AT PIER 1 - SPAN 1
AND PIER 2 - SPAN 3**



STEEL EXTENSION

Equivalent welded plates will be allowed in lieu of the W12x35 section.

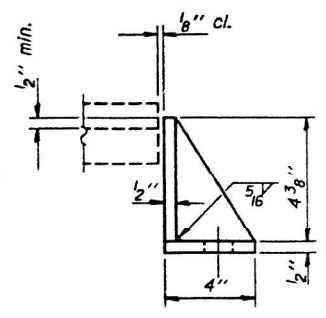
* Pier 2 (Beams 1 & 6 only)



SECTION C-C

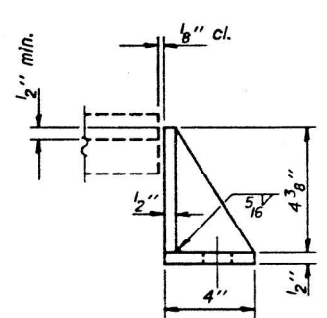
BILL OF MATERIAL

Item	Unit	Total
Elastomeric Bearing Assembly, Type I	Each	12
Jack and Remove Existing Bearings	Each	12



SIDE RETAINER

(N. Side Pier 1 - Span 1 & S. Side Pier 2 - Span 3)



SIDE RETAINER

(S. Side Pier 1 - Span 1 & N. Side Pier 2 - Span 3)

Equivalent rolled angle with stiffeners will be allowed in lieu of welded plates.

FOR INFORMATIONAL USE ONLY

Notes: For anchor bolt installation details see sheet #19 of 19. See sheet #15 of 19 for Jack and Remove Existing Brg. procedure. Existing anchor bolts which are not under side retainer shall be covered with a 2" thick layer of cement mortar. Cost incidental to "Jack and Remove Existing Bearings".

IL 13 SN 082-0116(WB)

BEARING DETAILS
F.A.U. RT. 9251 SEC. 28-2-1HBR
ST. CLAIR COUNTY
STA. 60+55.73

DESIGNED BY: JASSEM M. ELBACHA	EXAMINED BY: <i>Rajiv D. Kapan</i>
CHECKED BY: MICHAEL S. ABUDISAW	PASSED BY: <i>Ralph E. Anderson</i>
DRAWN BY: R. Doty	APPROVED BY: _____
CHECKED BY: JMF	MGA

I-2-E1 12-1-83

USER NAME = millerraj	DESIGNED -	REVISED -	STATE OF ILLINOIS DEPARTMENT OF TRANSPORTATION	PLAN & ELEVATION	F.A.U. RT. 9251	SECTION 28-2HB-BP-1	COUNTY ST. CLAIR	TOTAL SHEETS 19	SHEET NO. 17
PLOT SCALE = 100,0000' / in.	CHECKED -	REVISED -	SCALE: NTS	SHEET 4 OF 6 SHEETS	STA.	TO STA.	CONTRACT NO. 76P69	ILLINOIS	FED. AID PROJECT
PLOT DATE = 7/20/2021	DATE -	REVISED -							

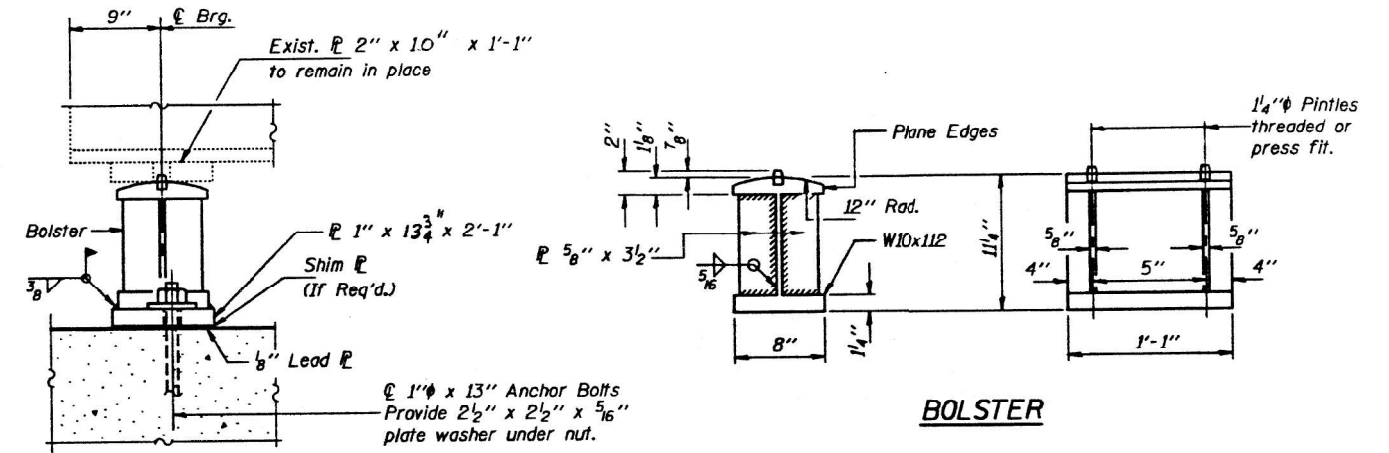
STATE OF ILLINOIS
DEPARTMENT OF TRANSPORTATION

ROUTE NO.	SECTION	COUNTY	SHEETS	SHEET	SHEET NO. 15
9251	28-2	ST. CLAIR	88	84	19 SHEETS
F.A.U. RT. 9251		I-HBR		ILLINOIS FED. AID PROJECT	

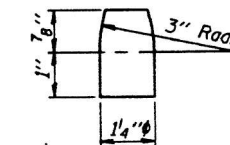
IL 13 SN 082-0116(WB)

JACK AND REMOVE EXISTING BEARING PROCEDURE

1. The Contractor shall submit for approval by the Engineer, plans for jacking prior to commencing any work at the bearings. Dead Load = 7.0K at each beam without concrete deck.
2. During each stage of construction, jacking and removing existing bearings shall be done after deck removal is completed and before the new deck is poured.
3. Three beams may be lifted at one time.
4. Jacking shall be limited to a maximum of $\frac{1}{8}$ " lift.
5. The existing anchor bolts shall be removed by cutting off flush with the bridge seat. The rockers and bottom plates shall be removed by cutting the pintles, leaving the existing top plate intact. The bottom flange area of the beam and existing top plate shall be cleaned and painted as required and as specified for structural steel prior to placing the new bearings.
6. The new bearings and steel extensions shall be placed and the jacks shall be lowered before the new deck is poured.

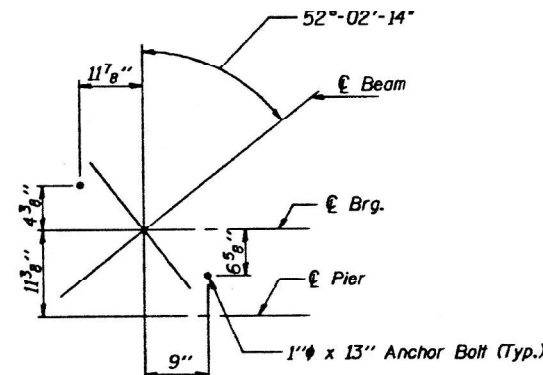


ELEVATION AT PIER 1 - SPAN 2
(Beams 5 and 6)
(Looking North)

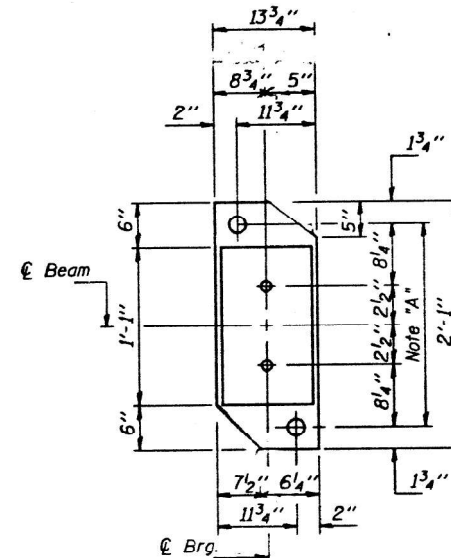


PINTLE

Note "A"
 $\frac{1}{2}$ " ϕ Holes for 1" ϕ Anchor Bolts - $\frac{5}{16}$ " x $2\frac{1}{2}$ " x $2\frac{1}{2}$ " ϕ washer under nut.



PLAN AT PIER 1 - SPAN 2
(Beams 5 and 6)



PLAN AT PIER 1
SPAN 2
(Beams 5 and 6)

Notes: For anchor bolt installation details see sheet #19 of 19.

DESIGNED	W. W. E. P. H. M. B.
CHECKED	N. C. H. A. E. L. S. A. B. I. O. G. U. N.
DRAWN	R. D. O. Y.
CHECKED	J. M. F.

Oct 30 1990
 EXAMINED *Raj D. K. S.*
 PASSED *Ralph E. Anderson*
 APPROVED _____
 DIRECTOR OF HIGHWAYS

FOR INFORMATIONAL USE ONLY

BEARING DETAILS
 F.A.U. RT. 9251 SEC. 28-2-1HBR
 ST. CLAIR COUNTY
 STA. 60+55.73

BILL OF MATERIAL

Item	Unit	Total
Jack and Remove Existing Bearings	Each	2

MODEL: Default
 FILE NAME: p:\mllerra\mllerra\p\110101\Doc\mllerra\DOT - Office\Drawings\9251\28-2-1HBR\9251-28-2-1HBR-84.dwg
 PROJECT: 9251-28-2-1HBR
 CADD: 9251-28-2-1HBR
 DATE: 7/20/2021

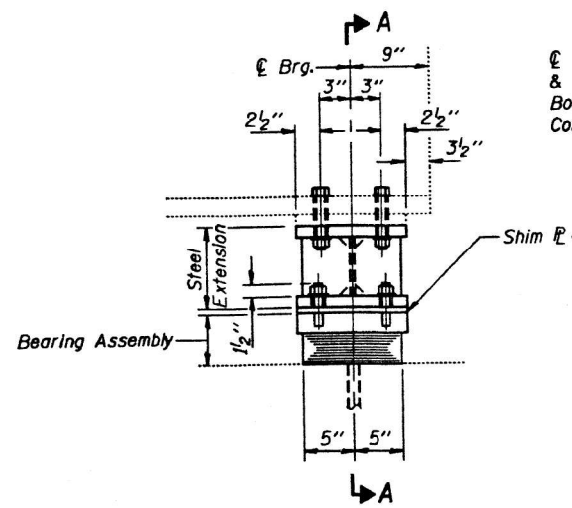
USER NAME = mllerra	DESIGNED -	REVISED -
	DRAWN -	REVISED -
PLOT SCALE = 100,0000' / in.	CHECKED -	REVISED -
PLOT DATE = 7/20/2021	DATE -	REVISED -

STATE OF ILLINOIS
DEPARTMENT OF TRANSPORTATION

PLAN & ELEVATION

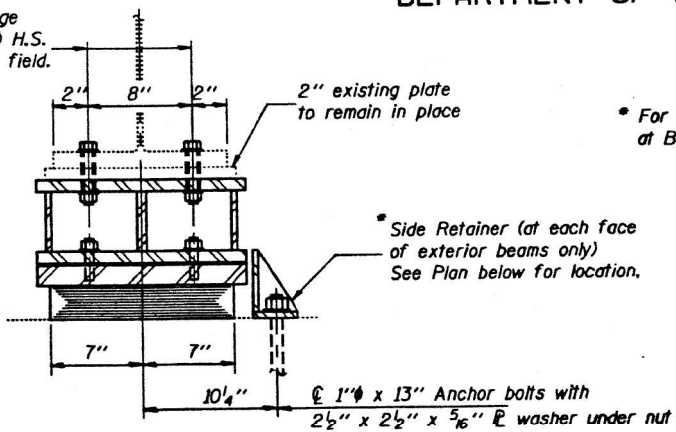
SCALE: NTS SHEET 5 OF 6 SHEETS STA. TO STA.

F.A.U. RTE.	SECTION	COUNTY	TOTAL SHEETS	SHEET NO.
9251	28-2HB-BP-1	ST. CLAIR	19	18
CONTRACT NO. 76P69				
ILLINOIS FED. AID PROJECT				



ELEVATION AT PIER 2 - SPAN 2
(Looking North)

7/8" Holes in flange & bottom flange for 3/4" H.S. Bolts to be drilled in field. Cost incidental.

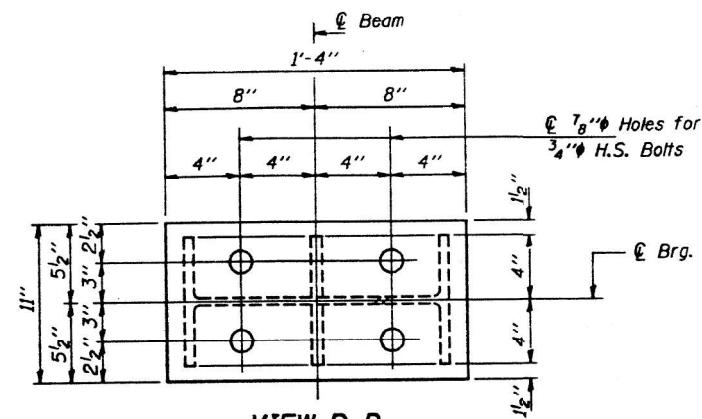


SECTION A-A

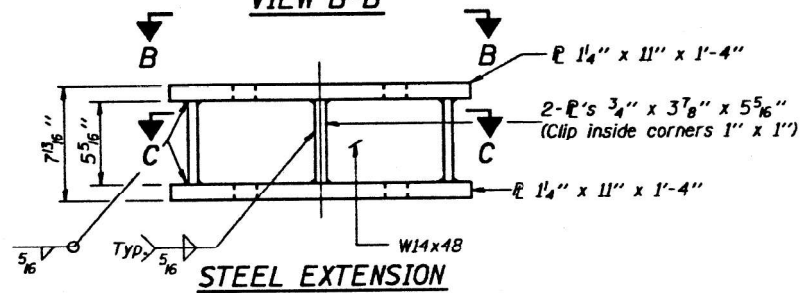
* For Stage I Const. provide side retainers at Beam 4 N. side Pier 2 - Span 2.

* Side Retainer (at each face of exterior beams only) See Plan below for location.

1" x 13" Anchor bolts with 2 1/2" x 2 1/2" x 5/16" washer under nut

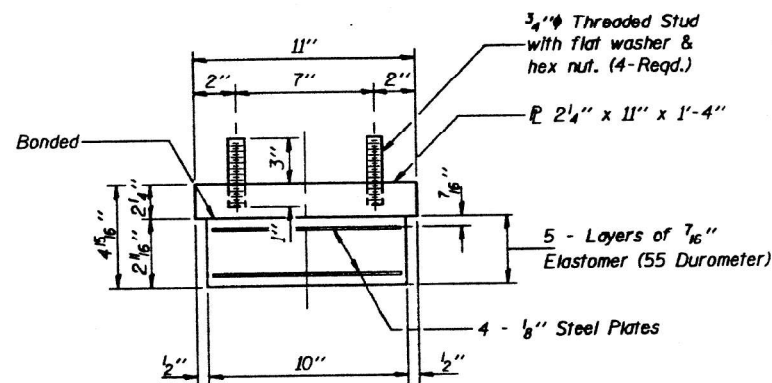


VIEW B-B



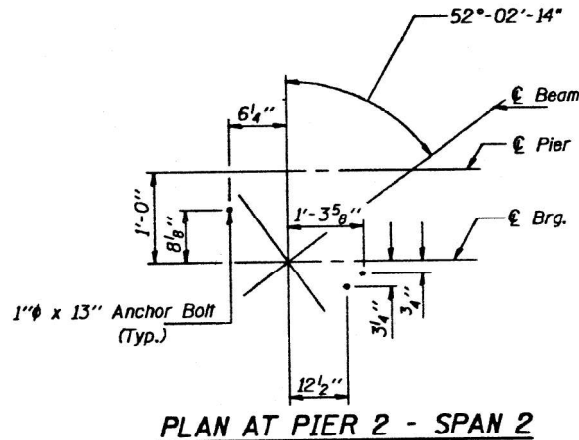
Equivalent welded plates will be allowed in lieu of the W14x48 section.

TYPE I ELASTOMERIC EXP. BRG.



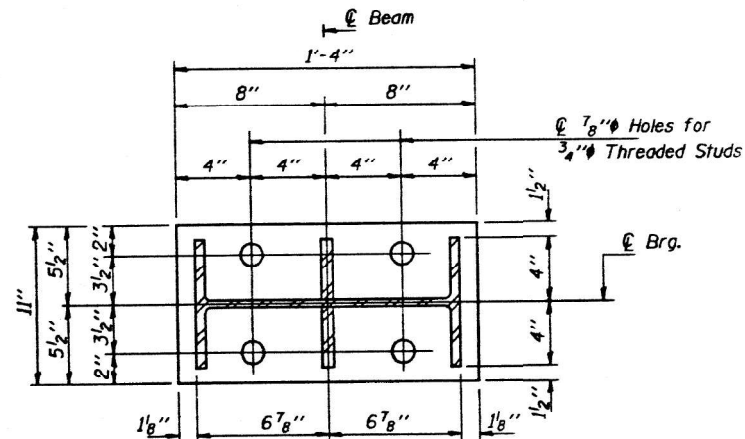
BEARING ASSEMBLY

Note: Shim plates shall not be placed under Bearing Assembly.

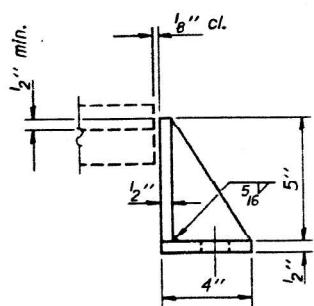


PLAN AT PIER 2 - SPAN 2

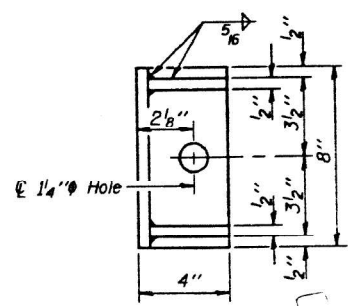
IL 13 SN 082-0116(WB)



SECTION C-C



SIDE RETAINER
N. Side Pier 2 (Span 2)



SIDE RETAINER
S. Side Pier 2 (Span 2)

FOR INFORMATIONAL USE ONLY

BILL OF MATERIAL

Item	Unit	Total
Elastomeric Bearing Assembly, Type I	Each	6
Jack and Remove Existing Bearings	Each	6

Equivalent rolled angle with stiffeners will be allowed in lieu of welded plates.

Notes: For anchor bolt installation details see sheet #19 of 19. See sheet #15 of 19 for Jack and Remove Existing Brg. procedure. Existing anchor bolts which are not under side retainer shall be covered with a 2" thick layer of cement mortar. Cost incidental to "Jack and Remove Existing Bearings".

DESIGNED	Oct 30 1990
CHECKED	
DRAWN	
CHECKED	

BEARING DETAILS
F.A.U. RT. 9251 SEC. 28-2-IHBR
ST. CLAIR COUNTY
STA. 60+55.73

I-2-E1 12-1-83

MODEL: Default
FILE NAME: p:\pub\m3000m.dwg
PROJECT: I-28-2-1HBR-1-83-01
DRAWING: BEARING DETAILS
DATE: 7/20/2021

USER NAME = millerraj	DESIGNED -	REVISED -
PLOT SCALE = 100,0000' / in.	DRAWN -	REVISED -
PLOT DATE = 7/20/2021	CHECKED -	REVISED -
	DATE -	REVISED -

STATE OF ILLINOIS
DEPARTMENT OF TRANSPORTATION

PLAN & ELEVATION

SCALE: NTS SHEET 6 OF 6 SHEETS STA. TO STA.

F.A.U. RTE. 9251	SECTION 28-2HB-BP-1	COUNTY ST. CLAIR	TOTAL SHEETS 19	SHEET NO. 19
CONTRACT NO. 76P69			ILLINOIS FED. AID PROJECT	