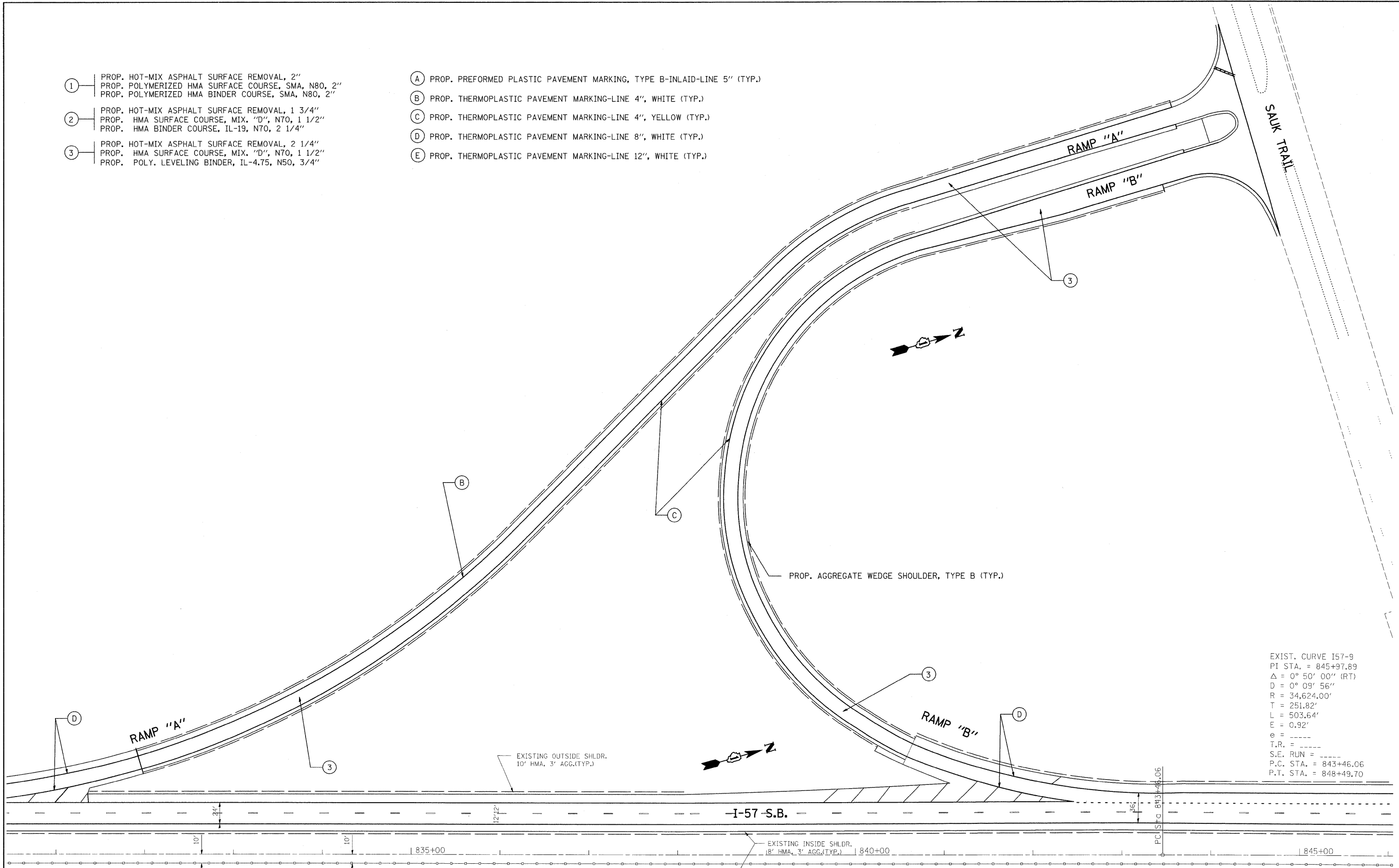


- ① PROP. HOT-MIX ASPHALT SURFACE REMOVAL, 2"  
PROP. POLYMERIZED HMA SURFACE COURSE, SMA, N80, 2"  
PROP. POLYMERIZED HMA BINDER COURSE, SMA, N80, 2"
- ② PROP. HOT-MIX ASPHALT SURFACE REMOVAL, 1 3/4"  
PROP. HMA SURFACE COURSE, MIX. "D", N70, 1 1/2"  
PROP. HMA BINDER COURSE, IL-19, N70, 2 1/4"
- ③ PROP. HOT-MIX ASPHALT SURFACE REMOVAL, 2 1/4"  
PROP. HMA SURFACE COURSE, MIX. "D", N70, 1 1/2"  
PROP. POLY. LEVELING BINDER, IL-4.75, N50, 3/4"

- Ⓐ PROP. PREFORMED PLASTIC PAVEMENT MARKING, TYPE B-INLAID-LINE 5" (TYP.)
- Ⓑ PROP. THERMOPLASTIC PAVEMENT MARKING-LINE 4", WHITE (TYP.)
- Ⓒ PROP. THERMOPLASTIC PAVEMENT MARKING-LINE 4", YELLOW (TYP.)
- Ⓓ PROP. THERMOPLASTIC PAVEMENT MARKING-LINE 8", WHITE (TYP.)
- Ⓔ PROP. THERMOPLASTIC PAVEMENT MARKING-LINE 12", WHITE (TYP.)



EXIST. CURVE I57-9  
 PI STA. = 845+97.89  
 $\Delta = 0^\circ 50' 00''$  (RT)  
 $D = 0^\circ 09' 56''$   
 $R = 34,624.00'$   
 $T = 251.82'$   
 $L = 503.64'$   
 $E = 0.92'$   
 $e = \text{---}$   
 $T.R. = \text{---}$   
 $S.E. \text{ RUN} = \text{---}$   
 P.C. STA. = 843+46.06  
 P.T. STA. = 848+49.70

FILE NAME =	USER NAME = abebawa	DESIGNED -	REVISED -	<b>STATE OF ILLINOIS DEPARTMENT OF TRANSPORTATION</b>	<b>I-57 RAMPS "A" AND "B" AT SAUK TRAIL</b>				F.A.I RTE.	SECTION	COUNTY	TOTAL SHEETS	SHEET NO.
os:\pwork\p\WIDOT\ABEBAWA\0142330\DI75809-sht-plen.dgn		DRAWN -	REVISED -		I-57	2009-064 RS	COOK	63	27				
PLOT SCALE = 50.0000 ' / IN.		CHECKED -	REVISED -		SCALE: SHEET NO. OF SHEETS STA. TO STA.				CONTRACT NO. 60H57				
PLOT DATE = 7/7/2009		DATE -	REVISED -		ILLINOIS FED. AID PROJECT								