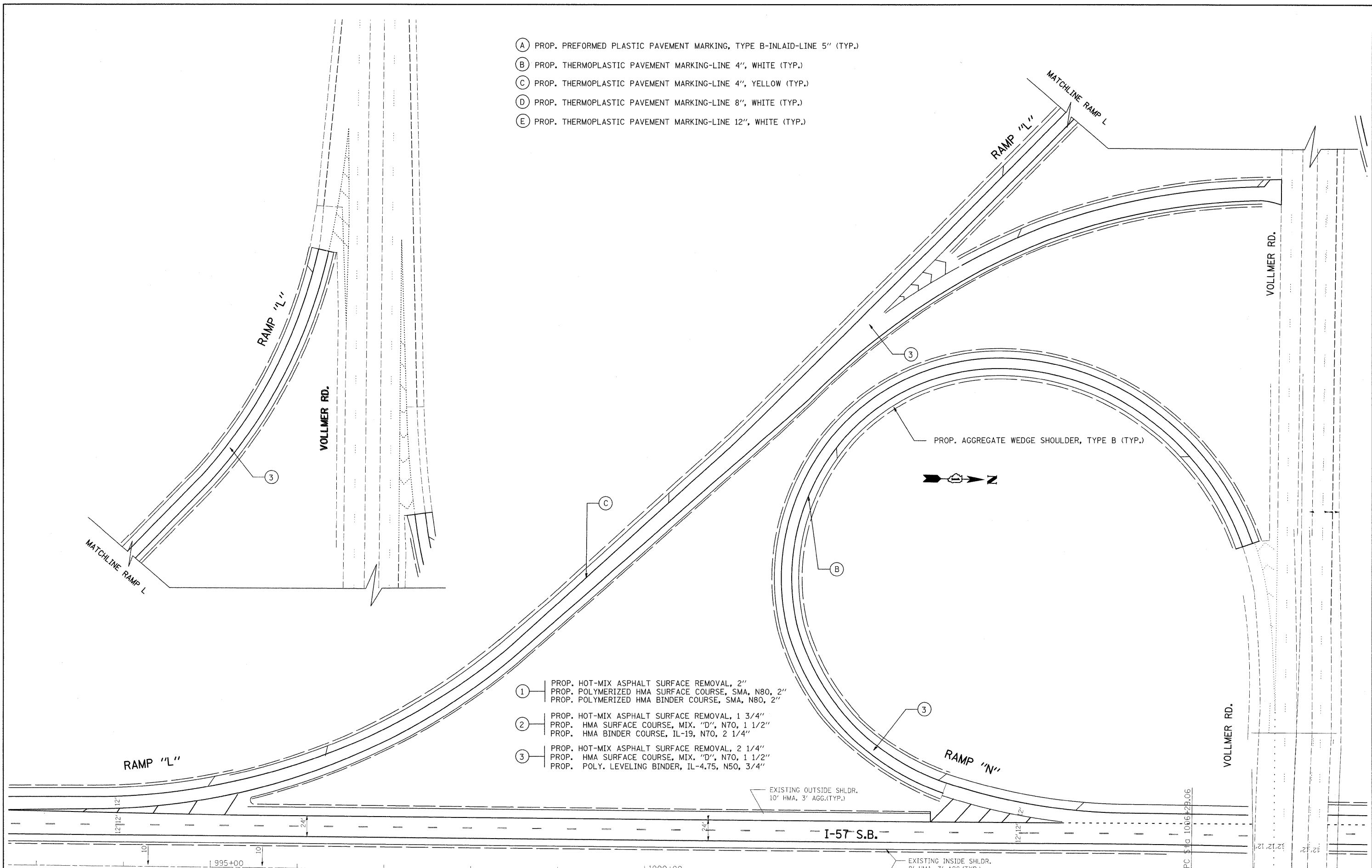


- (A) PROP. PREFORMED PLASTIC PAVEMENT MARKING, TYPE B-INLAID-LINE 5" (TYP.)
- (B) PROP. THERMOPLASTIC PAVEMENT MARKING-LINE 4", WHITE (TYP.)
- (C) PROP. THERMOPLASTIC PAVEMENT MARKING-LINE 4", YELLOW (TYP.)
- (D) PROP. THERMOPLASTIC PAVEMENT MARKING-LINE 8", WHITE (TYP.)
- (E) PROP. THERMOPLASTIC PAVEMENT MARKING-LINE 12", WHITE (TYP.)



- (1) PROP. HOT-MIX ASPHALT SURFACE REMOVAL, 2"  
PROP. POLYMERIZED HMA SURFACE COURSE, SMA, N80, 2"  
PROP. POLYMERIZED HMA BINDER COURSE, SMA, N80, 2"
- (2) PROP. HOT-MIX ASPHALT SURFACE REMOVAL, 1 3/4"  
PROP. HMA SURFACE COURSE, MIX. "D", N70, 1 1/2"  
PROP. HMA BINDER COURSE, IL-19, N70, 2 1/4"
- (3) PROP. HOT-MIX ASPHALT SURFACE REMOVAL, 2 1/4"  
PROP. HMA SURFACE COURSE, MIX. "D", N70, 1 1/2"  
PROP. POLY. LEVELING BINDER, IL-4.75, N50, 3/4"

FILE NAME =	USER NAME = abebawa	DESIGNED -	REVISED -	<b>STATE OF ILLINOIS DEPARTMENT OF TRANSPORTATION</b>	<b>I-57 RAMP "L" AND "N" AT VOLLMER ROAD</b>	F.A.I. RTE.	SECTION	COUNTY	TOTAL SHEETS	SHEET NO.	
c:\pwork\NPWIDOT\ABEBAWA\0142330\175509-aht-plan.dgn		DRAWN -	REVISED -			I-57	2009-064 RS	COOK	63	33	
PLOT SCALE = 50.0000' / IN.		CHECKED -	REVISED -			CONTRACT NO. 60H57					
PLOT DATE = 6/29/2009		DATE -	REVISED -			ILLINOIS FED. AID PROJECT					