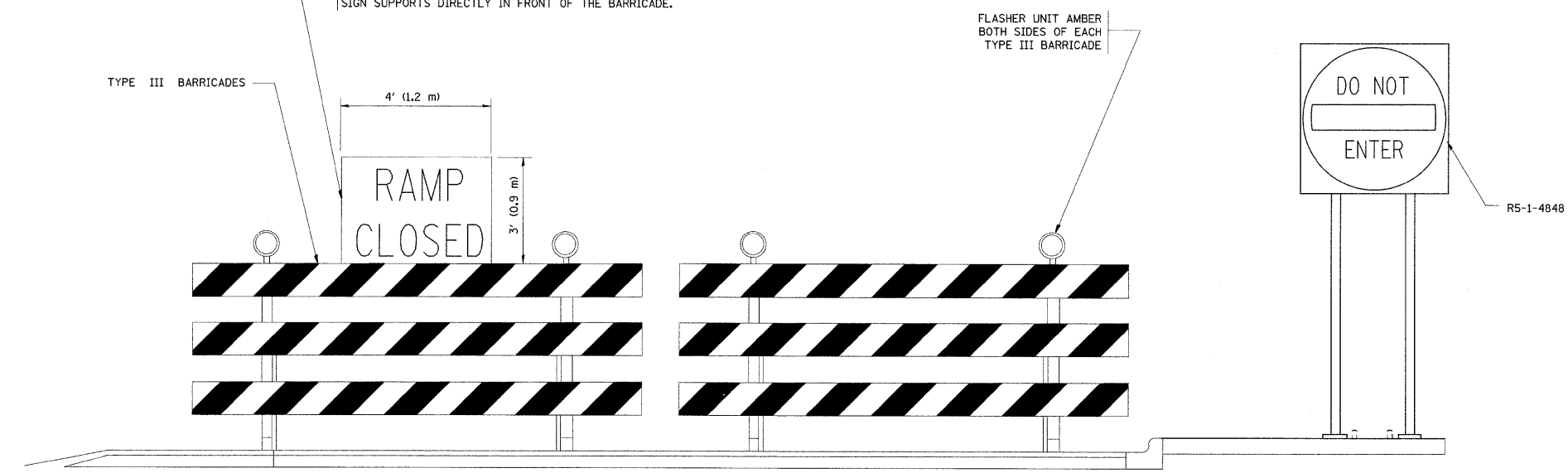


THE "RAMP CLOSED" SIGN SHALL BE B/W WITH 8 (200) CAPS. IF A TYPE III BARRICADE WITH AN ATTACHED SIGN PANEL WHICH MEETS NCHRP 350 IS NOT AVAILABLE, THE SIGNS MAY BE MOUNTED ON NCHRP 350 TEMPORARY SIGN SUPPORTS DIRECTLY IN FRONT OF THE BARRICADE.



- GENERAL NOTES:**
1. CONES MAY BE SUBSTITUTED FOR DRUMS OR TYPE II BARRICADES DURING DAY OPERATIONS. CONES SHALL BE A MINIMUM OF 28 (700) HIGH.
 2. STEADY BURN LIGHTS WILL NOT BE REQUIRED FOR DAY OPERATIONS.
 3. A FLAGGER SHALL BE POSITIONED AT EACH CLOSED RAMP THAT IS OPEN TO CONSTRUCTION VEHICLES.
 4. ALL ROUTE MARKERS AND TRAILBLAZER ASSEMBLIES WHICH DIRECT MOTORISTS TO A CLOSED ENTRANCE RAMP SHALL BE COVERED.
 5. THE SIGNING AND BARRICADING WHICH IS REQUIRED BY THIS DETAIL SHALL BE INCLUDED IN THE COST OF TRAFFIC CONTROL AND PROTECTION (EXPRESSWAYS).
 6. AUTHORIZATION FROM THE DISTRICT'S BUREAU OF TRAFFIC IS REQUIRED FOR ALL RAMP CLOSURES.
 7. THE RAMP CLOSURE ADVANCE INFORMATION SIGNS SHALL BE ERECTED IF THE CLOSURE TIME EXCEEDS TWENTY-FOUR (24) HOURS. ADDITIONAL ADVANCE WARNING SIGNS ON EXIT GUIDE SIGNING WILL BE REQUIRED FOR EXIT RAMP CLOSURES THAT EXCEED TWENTY-FOUR (24) HOURS IN LENGTH.

- SYMBOLS**
- ▬ TYPE II BARRICADE, DRUM OR VERTICAL BARRICADE WITH STEADY BURN MONO-DIRECTIONAL LIGHT
 - ⊞ TYPE III BARRICADE WITH FLASHING LIGHT

ALL DIMENSIONS ARE IN INCHES (MILLIMETERS) UNLESS OTHERWISE SHOWN.

FILE NAME =	USER NAME = abebawa	DESIGNED - DWS	REVISED - DWS 12-94	STATE OF ILLINOIS DEPARTMENT OF TRANSPORTATION	FREEWAY ENTRANCE AND EXIST RAMP CLOSURE DETAILS			F.A.I. RTE. I-57	SECTION 2009-064 RS	COUNTY COOK	TOTAL SHEETS 63	SHEET NO. 56
c:\pw_work\p\WIDOT\ABEBAWA\0142330\ND\st	td.dgn	DRAWN -	REVISED - DWS/JAF 12-02		SCALE: NONE	SHEET NO. 1 OF 1 SHEETS	STA.	TO STA.	TC-08	CONTRACT NO. 60H57	FED. ROAD DIST. NO. 1 ILLINOIS FED. AID PROJECT	
		PLOT SCALE = 50,0000' / IN.	REVISOR - JAF 02-06									
		PLOT DATE = 6/29/2009	DATE - 02-83		REVISED - SPB 01-07							