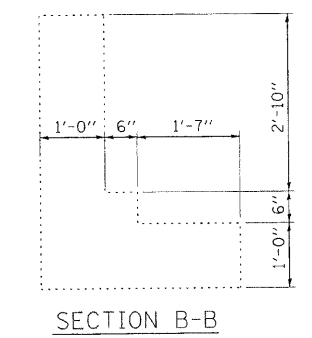
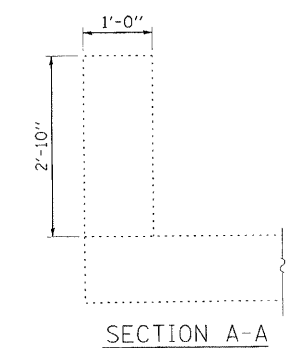


IL ROUTE 176 BRIDGE
OVER THE DES PLAINES RIVER

LEGEND

- APPROACH SLAB REMOVAL
- PAVEMENT REMOVAL
- COMBINATION CONCRETE CURB AND GUTTER REMOVAL
- GUTTER REMOVAL
- CONCRETE REMOVAL



• ALL SAW CUTS WILL BE CONSIDERED INCIDENTAL TO THE REMOVAL

FILE NAME = c:\p\proj\3386\3386.dgn\Removal\3386-31-Rem.dgn

Ciorba Group, Inc.
CONSULTING ENGINEERS
5507 North Cumberland Avenue, Suite 402
Chicago, Illinois 60656
Tel: 773.775.4009 Fax: 773.775.4014

USER NAME = espina	DESIGNED -	REVISED -
PLOT SCALE = 8.0000' / IN.	DRAWN -	REVISED -
PLOT DATE = 6/24/2009	CHECKED -	REVISED -
	DATE = 06-24-2009	REVISED -

STATE OF ILLINOIS
DEPARTMENT OF TRANSPORTATION

IL ROUTE 176			
APPROACH PAVEMENT REMOVAL DETAIL			
SCALE:	SHEET NO.	OF SHEETS	STA. TO STA.

F.A.U. RTE. 1238	SECTION (0 & 31) RS-7	COUNTY LAKE	TOTAL SHEETS 32	SHEET NO. 13
FED. ROAD DIST. NO. 1 ILLINOIS FED. AID PROJECT			CONTRACT NO. 62662	