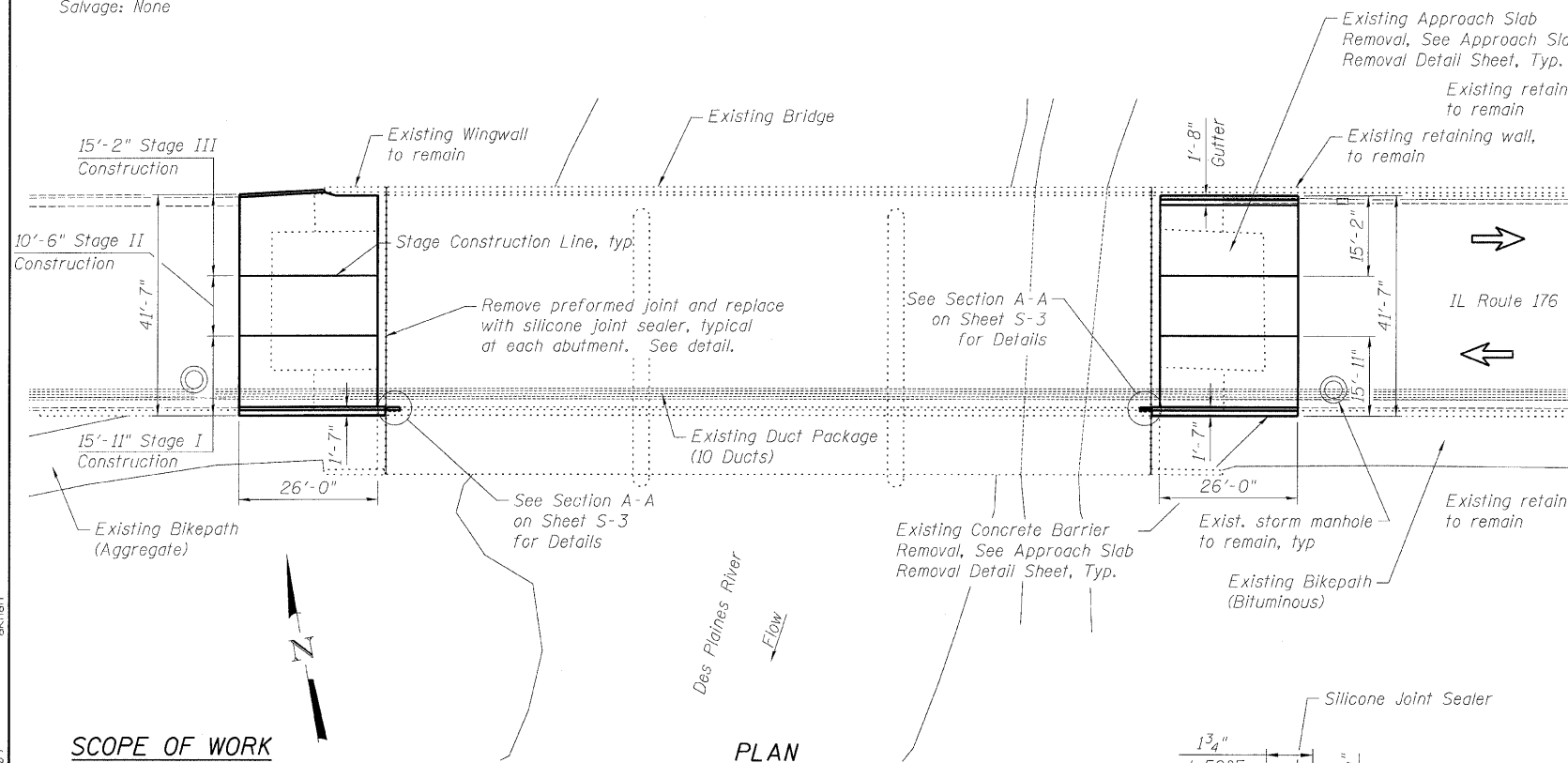


Benchmark: C.G.I # 1- Chiseled "X" on top of curb at SW Corner of IL-176 and Ashbury Lane intersection. Elev 657.77

Existing Structure: S.N. 049-0068 built in 1983. Three span (continuous), reinforced concrete deck on steel beams.

Salvage: None

STATE OF ILLINOIS  
DEPARTMENT OF TRANSPORTATION



**SCOPE OF WORK**

1. Remove existing approach pavement, concrete shoulders and portion of concrete railing; replace with 26' Bridge approach slab.
2. Remove, store and reinstall existing steel railing. Cost included with "Concrete Superstructure."
3. Replace existing preformed joint seal with silicone joint sealer and backer rod at each abutment.

**GENERAL NOTES**

1. Reinforcement bars shall conform to the requirements of ASTM A 706 Gr 60. See Special Provisions.
2. Reinforcement bars designated (E) shall be epoxy coated.
3. Plan dimensions and details relative to existing plans are subject to nominal construction variations. The Contractor shall field verify existing dimensions and details affecting new construction and make necessary approved adjustments prior to construction or ordering of materials. Such variations shall not be cause for additional compensation for a change in scope of the work, however, the Contractor will be paid for the quantity actually furnished at the unit price bid for the work.
4. Existing reinforcement shall be cleaned and incorporated into the new construction. Any reinforcement bars that are damaged during concrete removal shall be replaced with an approved bar splicer or anchorage system. Cost included with "Approach Slab Removal."
5. See "Approach Slab Removal Detail" Sheet in Roadway plans for concrete removal.

**DESIGN SPECIFICATIONS**

2007 AASHTO LRFD Bridge Design Specifications with 2008 Interims

**DESIGN STRESSES**  
**FIELD UNITS**

$f'_c = 3,500$  psi  
 $f_y = 60,000$  psi (Reinforcement)

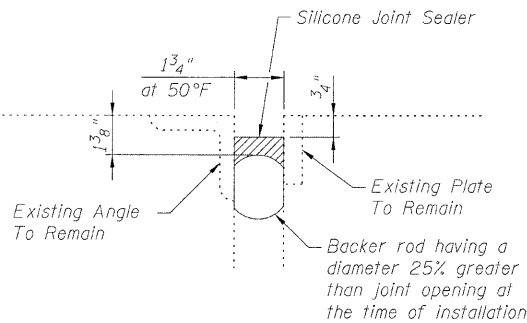
**LOADING HL-93**

**TOTAL BILL OF MATERIAL**

ITEM	UNIT	TOTAL
* Approach Slab Removal	Sq Yd	120
Concrete Removal	Cu Yd	9.2
Concrete Structures	Cu Yd	25.0
Concrete Superstructure	Cu Yd	113.8
Bridge Deck Grooving	Sq Yd	220
Protective Coat	Sq Yd	256
Reinforcement Bars, Epoxy Coated	Pound	29,540
Bar Splicers	Each	408
* Silicone Joint Sealer	Foot	109

\* - Special provision

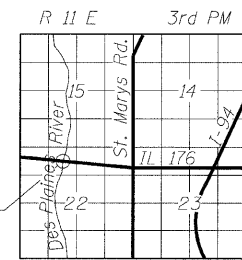
**SILICONE JOINT SEALER**  
**DETAILS**



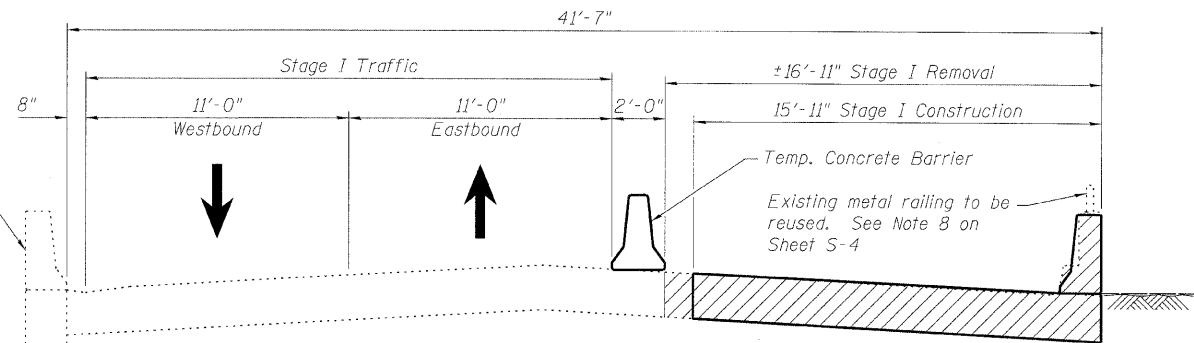
Existing Retaining wall, To Remain

**INDEX OF SHEETS**

- S-1 General Plan, Notes and Details
- S-2 Top of Approach Slab Elevations
- S-3 Approach Slab Details I
- S-4 Approach Slab Details II
- S-5 Bar Splicer Assembly Details
- S-6 Temporary Concrete Barrier

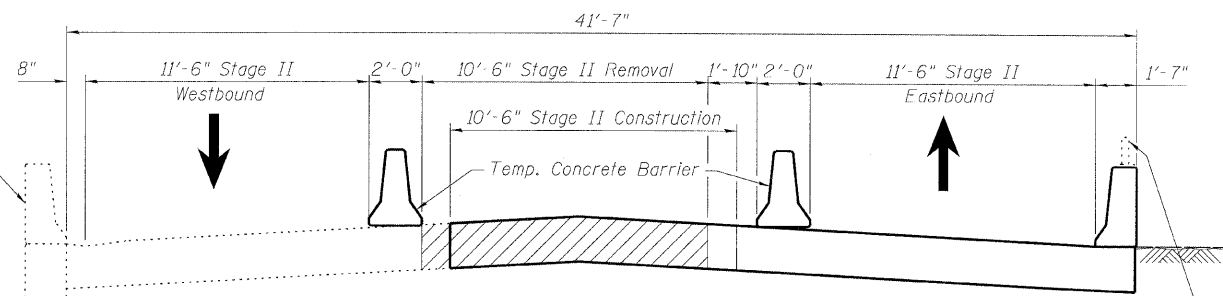


LOCATION SKETCH



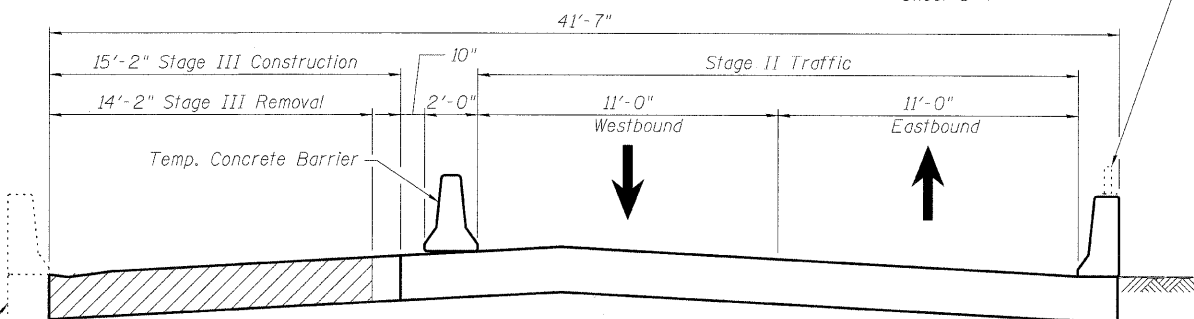
**CROSS-SECTION (STAGE I)**

Looking East  
East approach shown, West approach similar



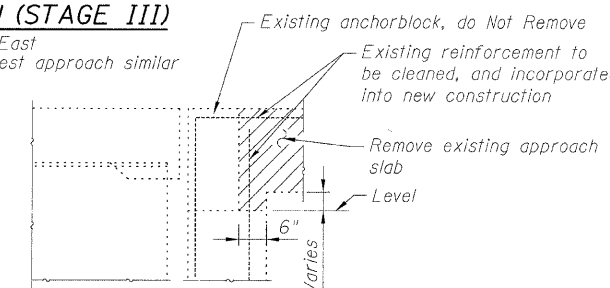
**CROSS-SECTION (STAGE II)**

Looking East  
East approach shown, West approach similar



**CROSS-SECTION (STAGE III)**

Looking East  
East approach shown, West approach similar



**SECTION THRU ABUTMENT**

**GENERAL PLAN, NOTES AND DETAILS**  
**ILLINOIS ROUTE 176 OVER DES PLAINES RIVER**  
**STRUCTURE NO. 049-0068**



SHEET NO. S-1	F.A. RTE. 1238	SECTION (Q & 31) RS-7	COUNTY LAKE	TOTAL SHEETS -	SHEET NO. 15
S-6 SHEETS	CONTRACT NO. 62662			FED. ROAD DIST. NO. 1 ILLINOIS FED. AID PROJECT	

**Ciorba Group, Inc.**  
CONSULTING ENGINEERS  
5507 North Cumberland Avenue, Suite 402 Chicago, Illinois 60656  
Tel. 773.775.4009 Fax 773.775.4014 Email chicago@ciorba.com

7/28/2009 akhen