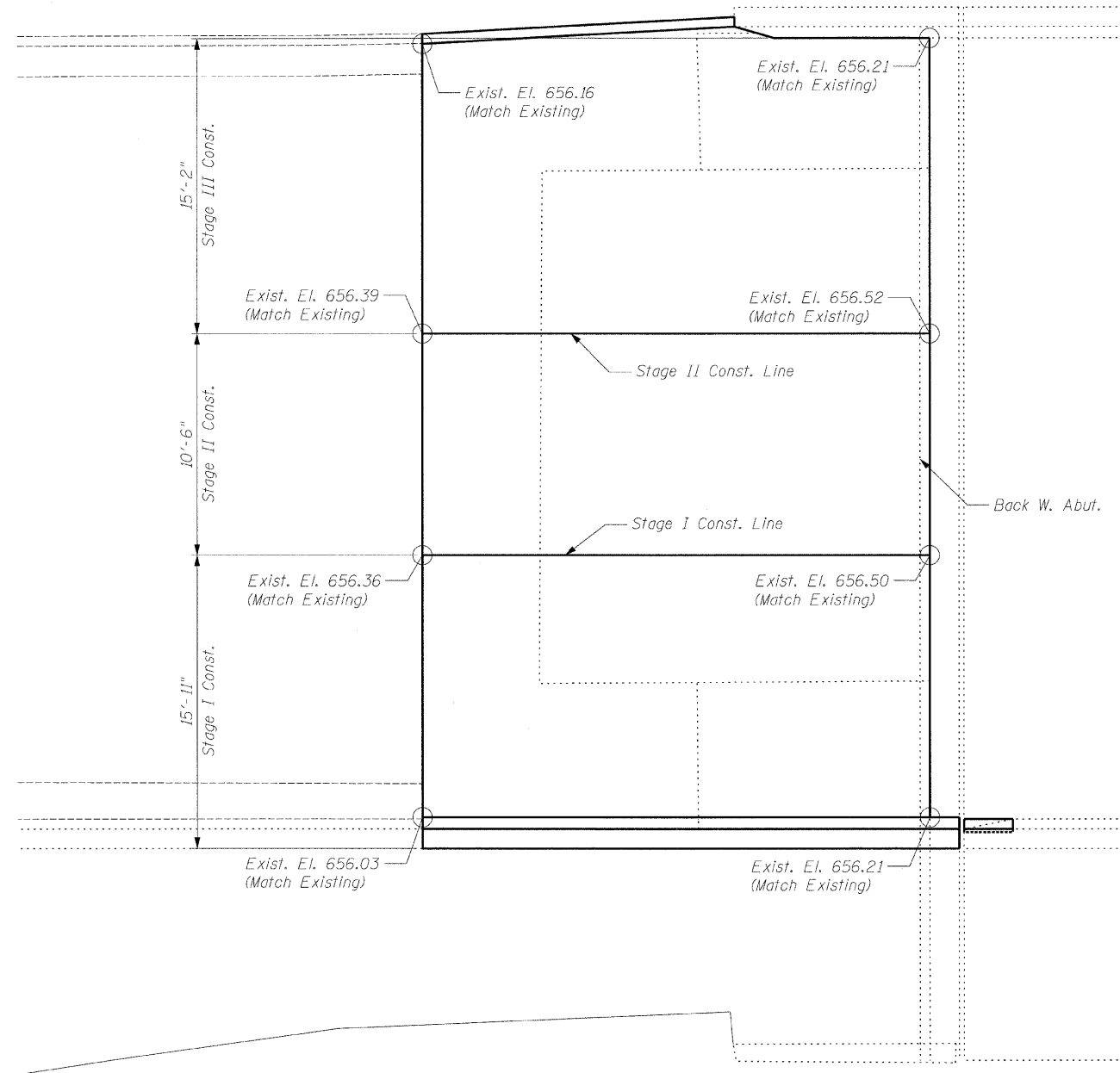
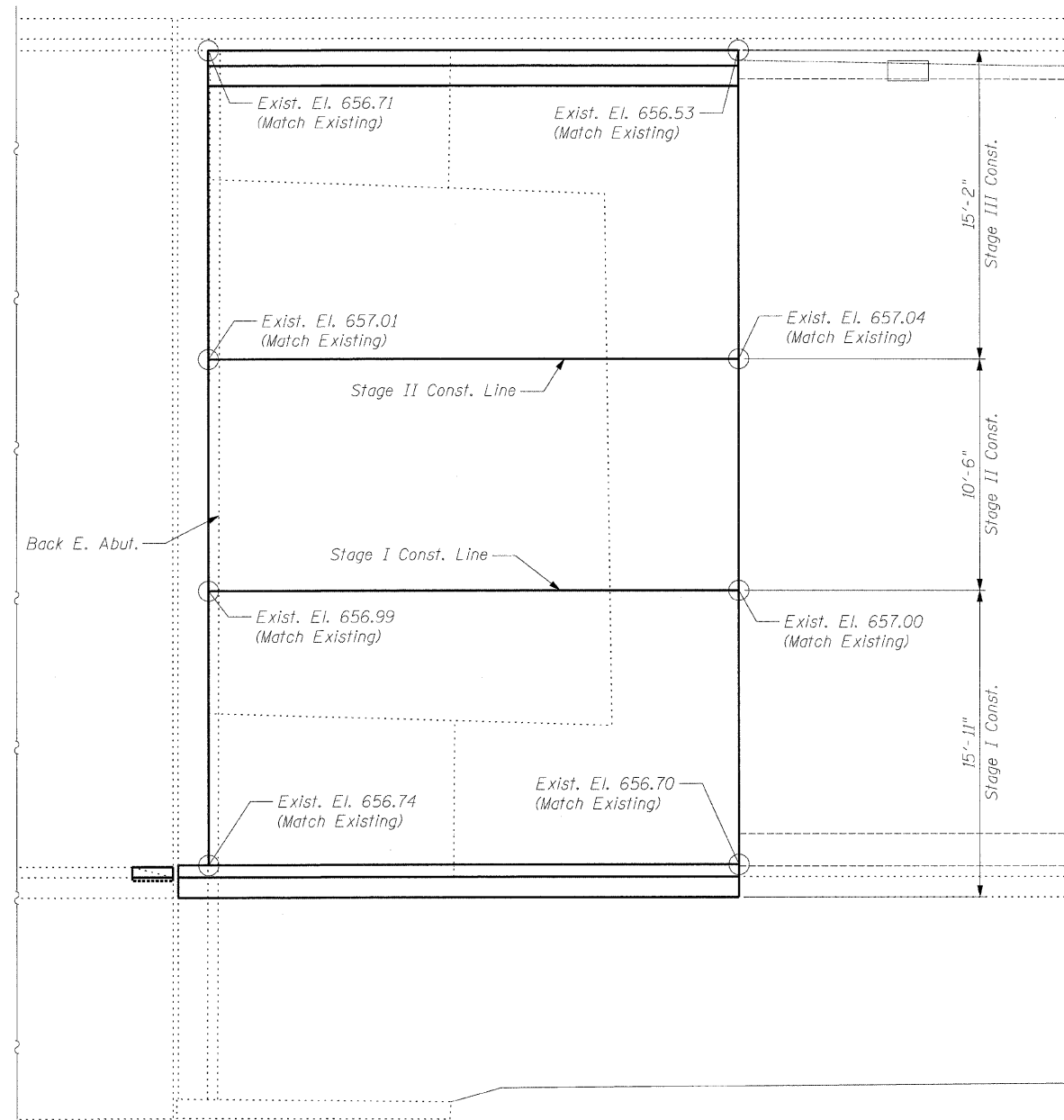


STATE OF ILLINOIS  
DEPARTMENT OF TRANSPORTATION



**PLAN**  
West Approach



**PLAN**  
East Approach

**TOP OF APPROACH  
SLAB ELEVATIONS  
STRUCTURE NO. 049-0068**

DESIGNED	BWS
CHECKED	AMK
DRAWN	BWS
CHECKED	EKM



**Ciorba Group, Inc.**  
CONSULTING ENGINEERS  
5507 North Cumberland Avenue, Suite 402 Chicago, Illinois 60656  
Tel. 773.775.4009 Fax 773.775.4014 Email chicago@ciorba.com

SHEET NO. S-2	F.A. - RTE.	SECTION	COUNTY	TOTAL SHEETS	SHEET NO.
	1238	(Q & 31) RS-7	LAKE	-	14
S-6 SHEETS		CONTRACT NO. 62662			
FED. ROAD DIST. NO. 1 ILLINOIS FED. AID PROJECT					

7/28/2009 7:28:20 AM N:\PROJ\3368\3368\_3A\Design\Structural\CAD\3368\_34\_02\_West Approach Elevations.dgn akhen