

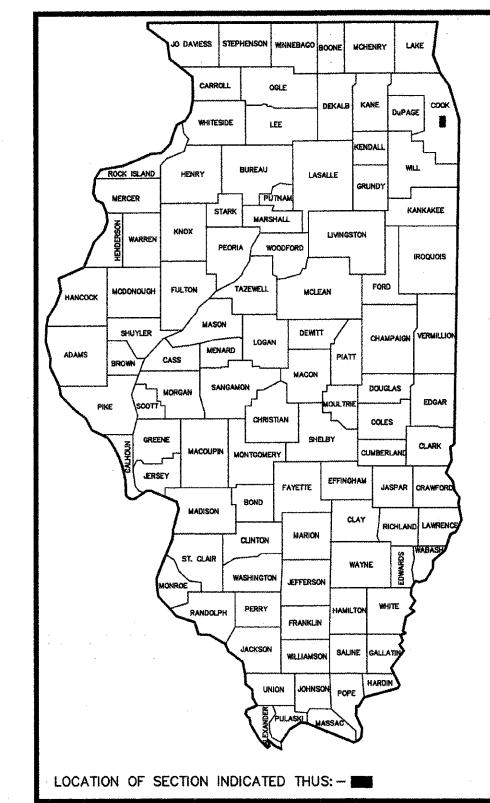
FAU RTE	SECTION	COUNTY	TOTAL SHEETS	SHEET NO.
FAU 2779	08-00165-00-RS	COOK	15	1
F.H.W.A. REG.	ILLINOIS PROJECT	ARA-9003(176)		

CONTRACT NO. 63203

STATE OF ILLINOIS
DEPARTMENT OF TRANSPORTATION
DIVISION OF HIGHWAYS

**PLANS FOR PROPOSED
FEDERAL AID HIGHWAY**

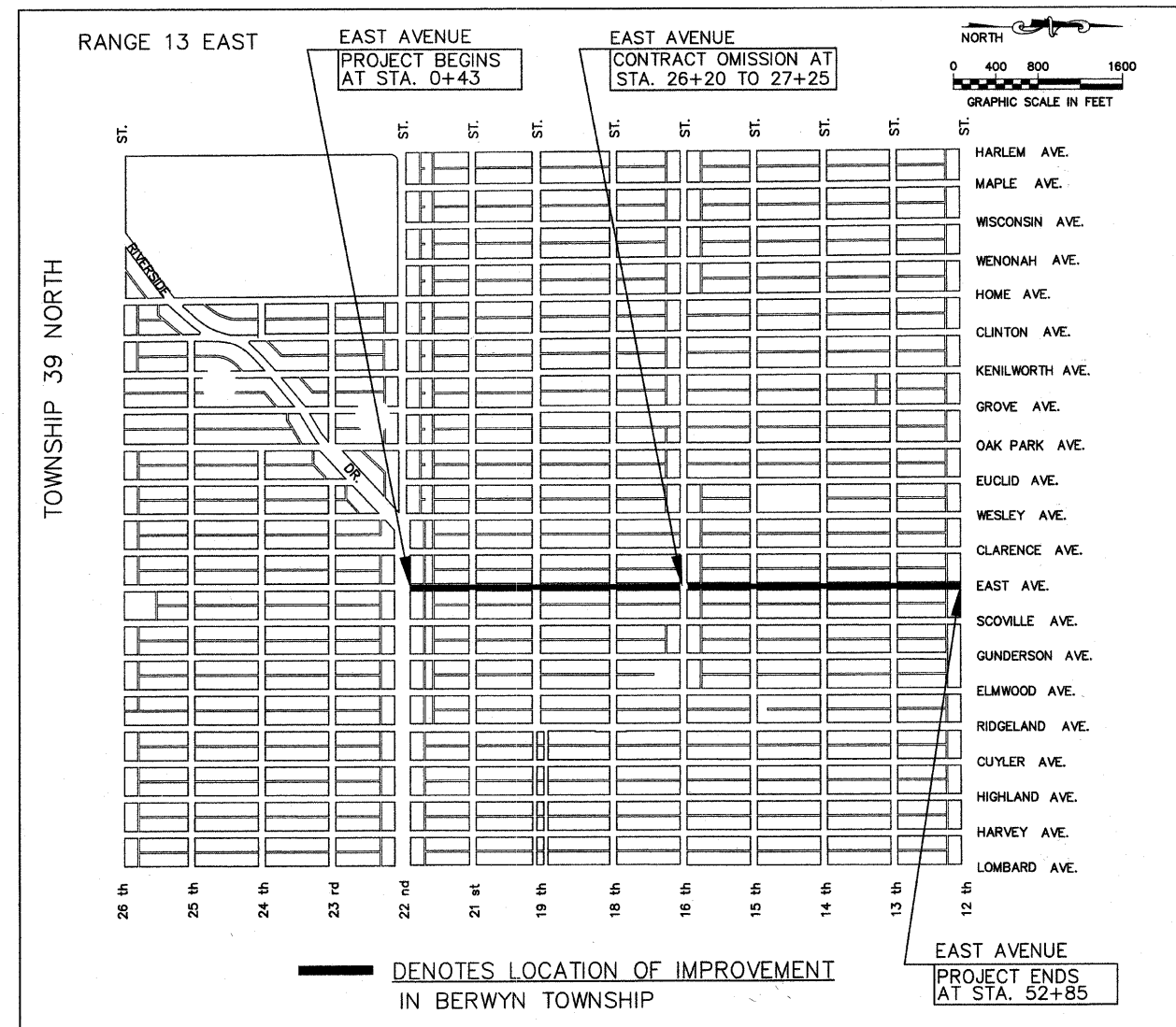
EAST AVENUE (FAU RTE. 2779)
FROM CERMAK ROAD (FAU 1453) TO ROOSEVELT RD. (FAP 347)
LAPP RESURFACING
FEDERAL PROJECT ARA-9003(176)
SECTION NO. 08-00165-00-RS
CITY OF BERWYN
COOK COUNTY
JOB NO. C-91-208-09



- INDEX OF SHEETS**
- COVER SHEET, INDEX OF SHEETS, LOCATION MAP, INDEX OF STATE STANDARDS
 - GENERAL NOTES, JOINT DETAILS, AND SUMMARY OF QUANTITIES
 - TYPICAL CROSS SECTIONS, HOT-MIX ASPHALT MIXTURE REQUIREMENTS
 - PLAN & PROFILE: EAST AVENUE (RESURFACING) - CERMAK RD. TO STA. 26+00
 - PLAN & PROFILE: EAST AVENUE (RESURFACING) - STA. 26+00 TO ROOSEVELT RD.
 - PLAN: EAST AVENUE (PAVEMENT MARKING) - CERMAK RD. TO STA. 24+50
 - PLAN: EAST AVENUE (PAVEMENT MARKING) - STA. 24+50 TO ROOSEVELT RD.
 - DISTRICT ONE TYPICAL PAVEMENT MARKINGS
 - PAVEMENT MARKING LETTERS AND SYMBOLS FOR TRAFFIC STAGING
 - TRAFFIC CONTROL AND PROTECTION FOR SIDEROADS, INTERSECTIONS, AND DRIVEWAYS
 - SIGNING FOR FLAGGING OPERATION AT WORK ZONE OPENINGS
 - CURB OR CURB AND GUTTER REMOVAL AND REPLACEMENT
 - FRAMES AND LIDS ADJUSTMENTS WITH MILLING
 - BUTT JOINT AND HOT-MIX ASPHALT TAPER DETAILS
 - DISTRICT ONE DETECTOR LOOP INSTALLATION DETAILS FOR ROADWAY RESURFACING

STATE STANDARDS

- 000001-05 STANDARDS SYMBOLS, ABBREVIATIONS, AND PATTERNS
- 424001-05 CURB RAMPS FOR SIDEWALK
- 442201-03 CLASS C AND D PATCHES
- 602501-01 VALVE VAULT TYPE A
- 604001-03 FRAME & LIDS, TYPE 1
- 606001-04 CONCRETE CURB AND COMBINATION CONCRETE CURB & GUTTER
- 701301-03 LANE CLOSURE, 2 L, 2 W, SHORT TIME OPERATIONS
- 701501-05 URBAN LANE CLOSURE, 2 L, 2 W UNDIVIDED
- 701701-06 URBAN LANE CLOSURE, MULTILANE INTERSECTION
- 701801-04 LANE CLOSURE MULTILANE 1W OR 2W CROSSWALK OR SIDEWALK CLOSURE
- 701901-01 TRAFFIC CONTROL DEVICES
- 780001-02 TYPICAL PAVEMENT MARKINGS
- 886001-01 DETECTOR LOOP INSTALLATIONS
- 886006-01 TYPICAL LAYOUTS FOR DETECTION LOOPS
- 781001-03 TYPICAL APPLICATIONS RAISED REFLECTIVE PAVEMENT MARKERS

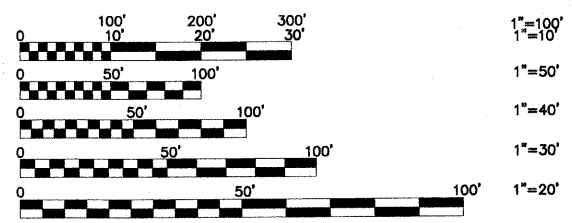


LOCATION MAP

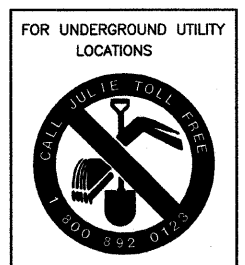
LENGTH OF PROJECT

GROSS LENGTH OF PROJECT	5,242 FEET (0.9928 MILES)
NET LENGTH OF PROJECT	5,137 FEET (0.9729 MILES)

FIELD ENGINEER: MARILIN SOLOMON (847)705-4407
CONSULTANT: FRANK NOVOTNY AND ASSOCIATES, INC. (630)887-8640



FULL SIZE PLANS HAVE BEEN PREPARED USING STANDARD ENGINEERING SCALES. REDUCED SIZED PLANS WILL NOT CONFORM TO STANDARD SCALES. IN MAKING MEASUREMENTS ON REDUCED PLANS, THE ABOVE SCALES MAY BE USED.



STATE OF ILLINOIS
DEPARTMENT OF TRANSPORTATION
DIVISION OF HIGHWAYS

APPROVED June 26th 2009

CITY MAYOR Rlt J...

PASSED July 16, 2009

C. H. H. ...
DISTRICT #1 ENGINEER OF LOCAL ROADS & STREETS

RELEASING FOR BID
BASED ON LIMITED
REVIEW July 16, 2009

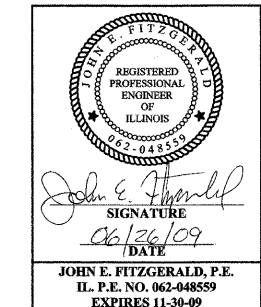
Diana M. O'Keefe
DEPUTY DIRECTOR OF HIGHWAYS, REGION #1 ENGINEER

PROJECT LOCATED IN THE
CITY OF BERWYN

PRINTED BY THE AUTHORITY
OF THE STATE OF ILLINOIS

SEE SHEET 3 FOR
DESIGN DETAILS

TRAFFIC DATA:
ADT (2015): 8,800
POSTED SPEED LIMIT = 30 MPH
DESIGN SPEED LIMIT = 30 MPH



CONTRACT NO. 63203

REVISIONS

NO.	BY	DATE	DESCRIPTION
1	JEF	5-1-09	PER I.D.O.T. REVIEW
2	JEF	6-24-09	PER I.D.O.T. REVIEW
3	JEF	7-08-09	PER BERWYN
4	JEF	7-09-09	PER I.D.O.T. REVIEW
5	JEF	7-16-09	PER I.D.O.T. REVIEW

Frank Novotny & Associates, Inc.
Civil Engineers / Municipal Consultants
825 Midway Drive • Willowbrook, IL • 60527 • Telephone: (630) 887-8640 • Fax: (630) 887-0132
ILLINOIS PROFESSIONAL DESIGN FIRM NO. 184-00828

FNA JOB # 06077