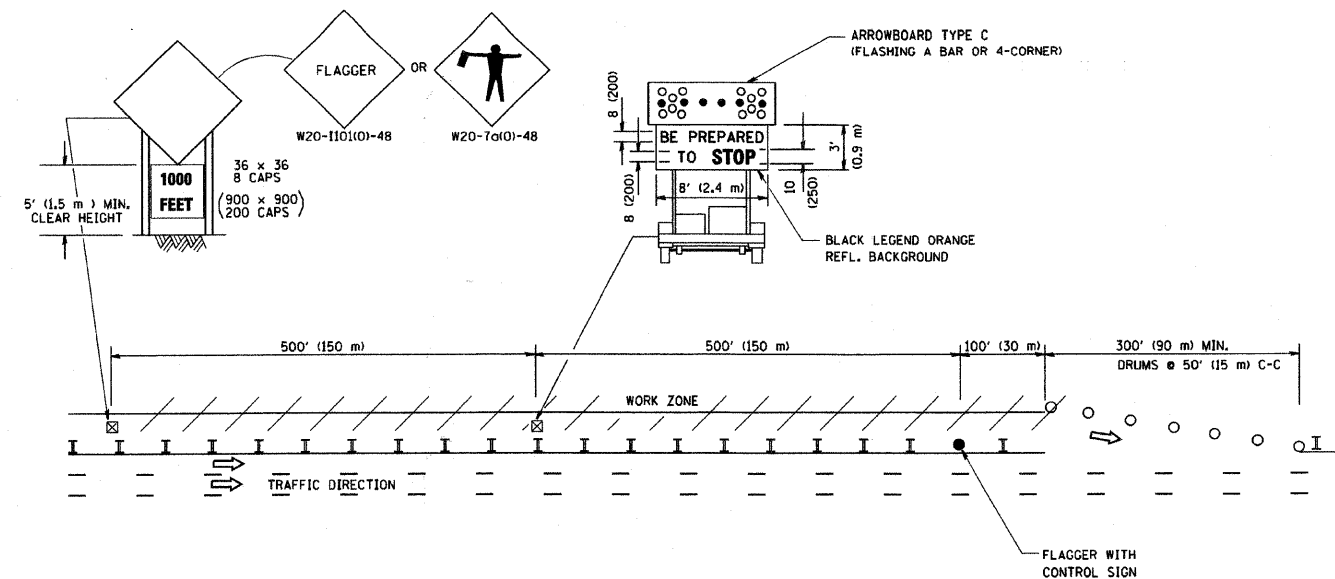


FAU RTE	SECTION	COUNTY	TOTAL SHEETS	SHEET NO.
FAU 2779	08-00165-00-RS	COOK	15	11
F.H.W.A. REG.	ILLINOIS PROJECT	ARA-9003(176)		

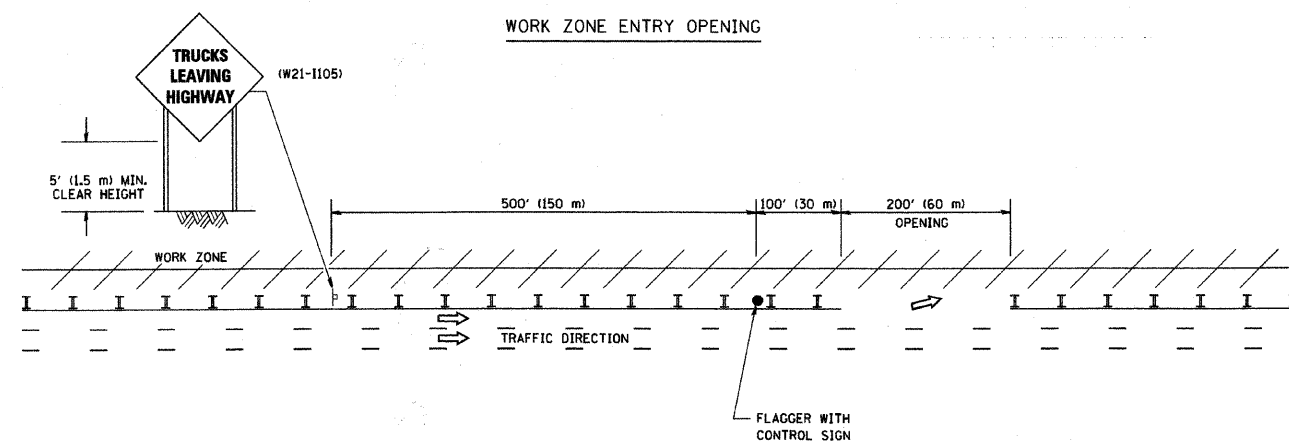
CONTRACT NO. 63203

SIGNING FOR FLAGGING OPERATIONS AT WORK ZONE OPENINGS

WORK ZONE EXIT OPENING



WORK ZONE ENTRY OPENING



NOTES:

1. The Arrowboard, the Flagger Ahead trailer mounted sign, and the Trucks Leaving Highway sign shall be removed or turned away from traffic and the exit and entry openings shall be closed when the flagging operation ceases.
2. Work Zone Exit Openings should be a minimum of one half mile apart.
3. Exiting the work zone at any place other than at a Work Zone Exit Opening will be prohibited.
4. All vehicles shall enter the work zone at entry openings, using their turn signals to warn motorists

ALL DIMENSIONS ARE IN INCHES (MILLIMETERS) UNLESS OTHERWISE SHOWN

REVISIONS	
NO.	DATE
DWS	8/98
JAF	4/03
JAF	2/06
SPB	1/07

ILLINOIS DEPARTMENT OF TRANSPORTATION
SIGNING FOR FLAGGING OPERATIONS AT WORK ZONE OPENINGS

SCALE: NONE

DRAWN BY CADD
CHECKED BY TC-18

PLOT DATE: 3/7/2007
FILE NAME: K:\data\civil\bdgn\08-00165-00-RS.dwg
USER: NAME
PLOTTER: HP DesignJet 710

REVISIONS			
NO.	BY	DATE	DESCRIPTION