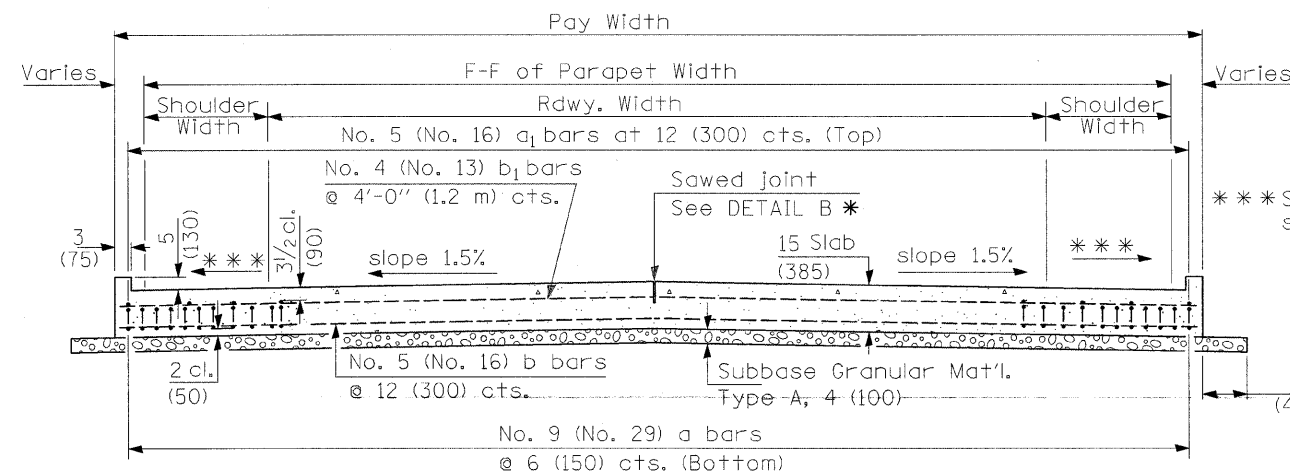
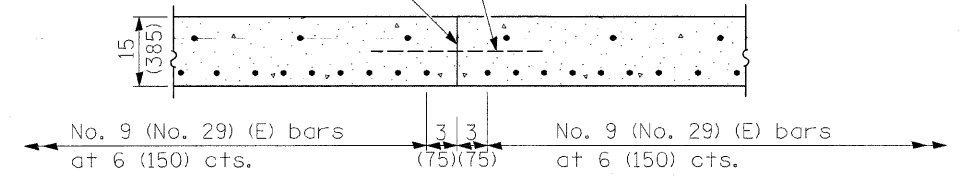


① Stagger No. 9 (No. 29) a bars as shown on plan - full width



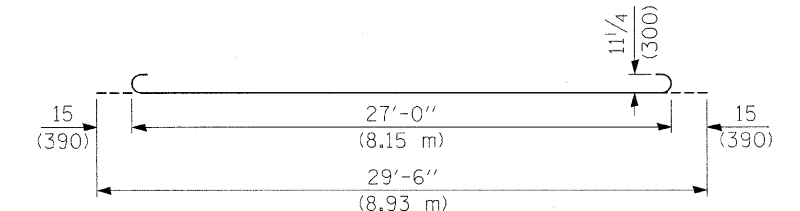
SECTION D-D
(See Plan for Dimensions not shown)

Longitudinal Construction Joint in accordance with details shown on Standard 420001.

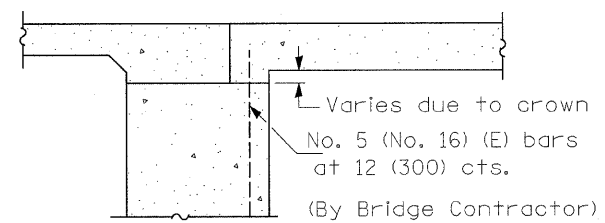


OPTIONAL LONGITUDINAL CONSTRUCTION JOINT

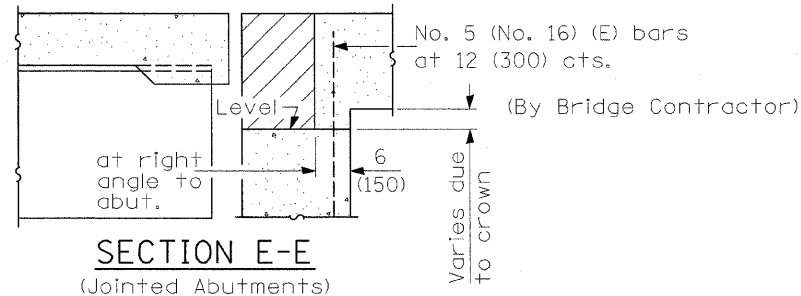
As approved by the Engineer, the Contractor may elect to reduce the widths of pour by use of the Optional Longitudinal Construction Joint shown. Joints shall be located at the edge of a traffic lane.



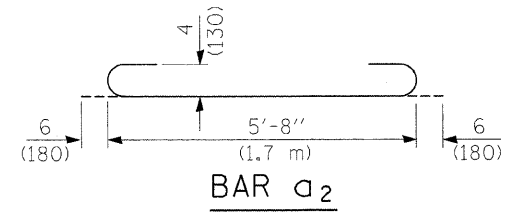
BAR a



SECTION E-E
(Integral Abutments)



SECTION E-E
(Jointed Abutments)



BAR a2

DESIGN STRESSES
 fy = 60,000 p.s.i. (400 MPa)
 f'c = 3,500 p.s.i. (24 MPa)
 n = 8.5

FILE NAME =	USER NAME = stoffmann	DESIGNED -	REVISED -	STATE OF ILLINOIS DEPARTMENT OF TRANSPORTATION	BRIDGE APPROACH PAVEMENT DETAILS	F.A.P. RTE. 328	SECTION (9BRI, 10BRI)B1	COUNTY WAYNE	TOTAL SHEETS 67	SHEET NO. 18
PLOT SCALE = 50.0000' / IN.	DRAWN -	REVISED -	SCALE:			SHEET NO. OF SHEETS STA. TO STA.	FED. ROAD DIST. NO.	ILLINOIS FED. AID PROJECT	CONTRACT NO. 74214	
PLOT DATE = 1/12/2009	CHECKED -	REVISED -								
	DATE -	REVISED -								