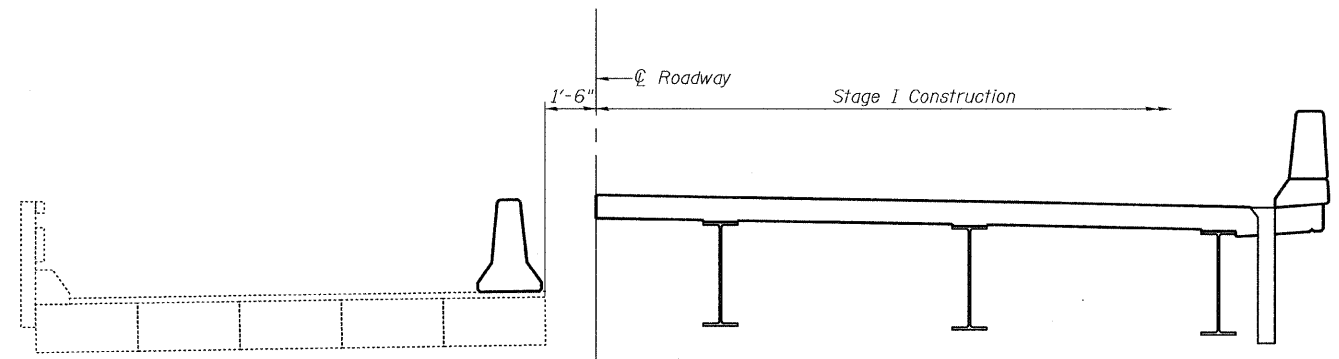
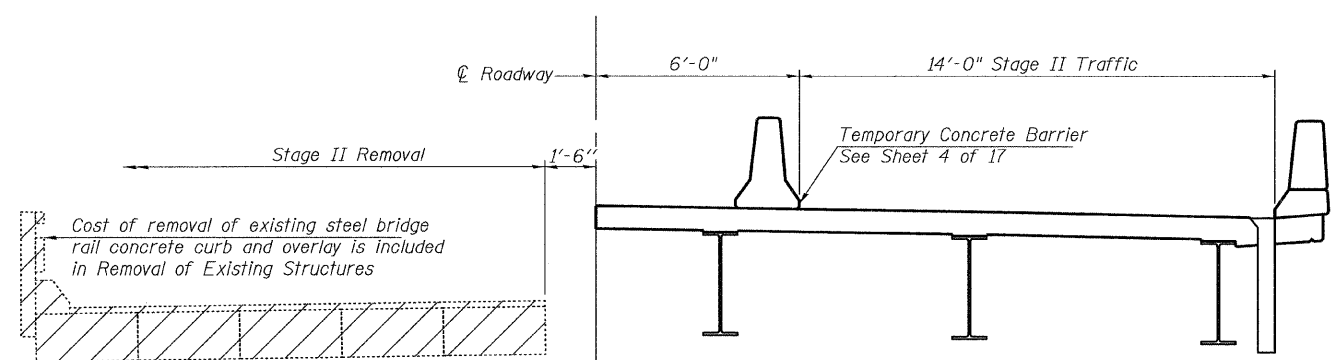


*Traffic restricted to legal loads only.

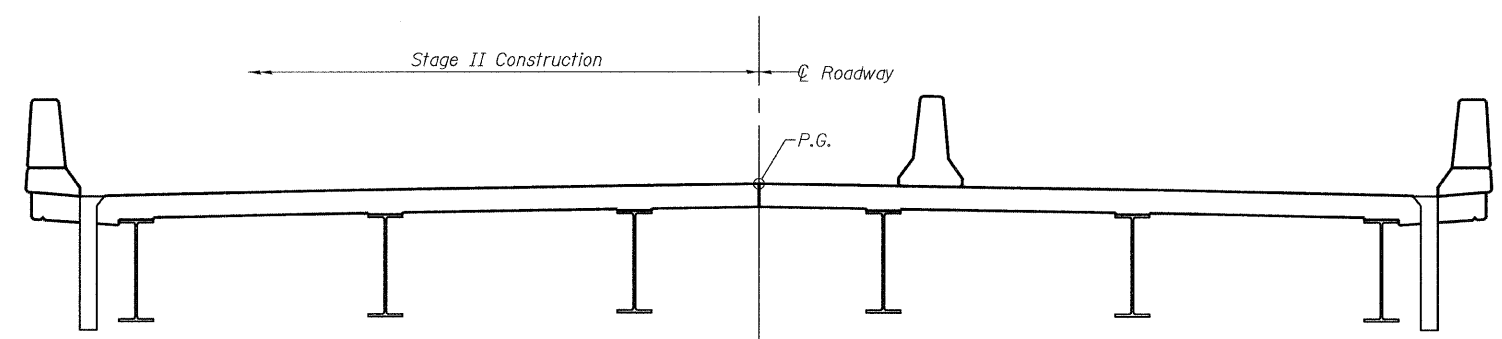
STAGE I REMOVAL



STAGE I CONSTRUCTION



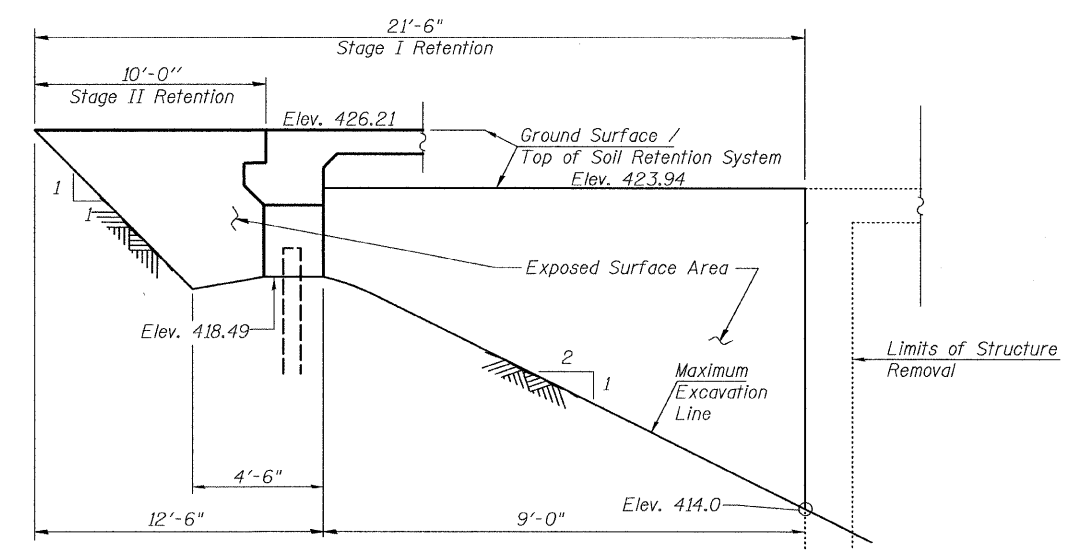
STAGE II REMOVAL



STAGE II CONSTRUCTION

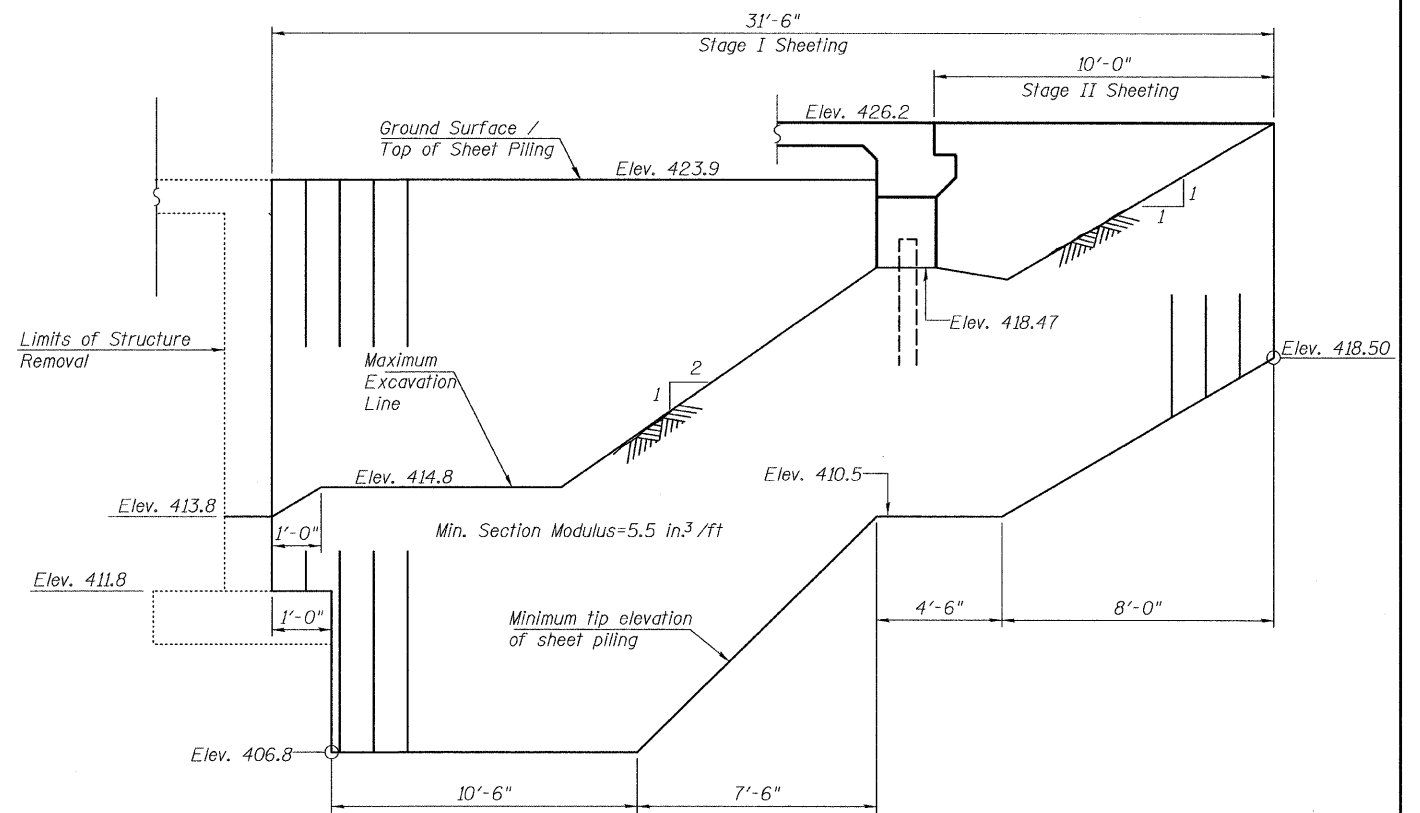
NOTES

All staging cross sections are looking north.
 Hatched areas indicates Removal of Existing Structures.
 For quantity of Temporary Concrete Barrier see roadway plans.
 Removal of existing precast concrete bridge slabs at each approach corner is included with Removal of Existing Structures.



Note: A cantilevered sheet piling design does not appear feasible and additional members or other retention systems may be necessary. The Contractor shall submit a temporary soil retention system design including plan details and calculations for review and acceptance by the Engineer.

TEMPORARY SOIL RETENTION SYSTEM AT S. ABUT.



TEMPORARY SHEET PILING AT N. ABUT.

If the Contractor chooses to alter the temporary cantilevered sheet piling design requirements shown on the plans, a design submittal including plan details and calculations will be required for review and acceptance by the Engineer.
 The Contractor shall connect the first sheet to the existing abutment wall to ensure stability of sheets driven to the top of the existing footing. This connection shall be reviewed and accepted by the Engineer and included in the cost for Temporary Sheet Piling.

STAGE CONSTRUCTION DETAILS
U.S. ROUTE 45 OVER MARTIN CREEK
F.A.P. RT. 328 SEC. (9BR1-10BR1) B-1
WAYNE COUNTY
STATION 139+10.00
STRUCTURE NO. 096-0069

PLOT DATE = 09/06/2008
 PLOT SCALE = 1/8"=1'-0"
 USER NAME = TFC

COOMBE-BLOXDORF P.C. Engineers / Land Surveyors Springfield, Illinois Design Firm License No. 184-002703	PROJECT NO. 07053-8 SCALE DATE 8/05/08 DRAWN BY TFG CHECKED BY CME/RM/MCB	SHEET NO. 3 17 SHEETS	F.A.P. RTE. 328 SECTION (9BR1-10BR1) B-1 COUNTY WAYNE CONTRACT NO. 74214	TOTAL SHEETS 67 SHEET NO. 26
	FED. ROAD DIST. NO. 7 ILLINOIS FED. AID PROJECT			