








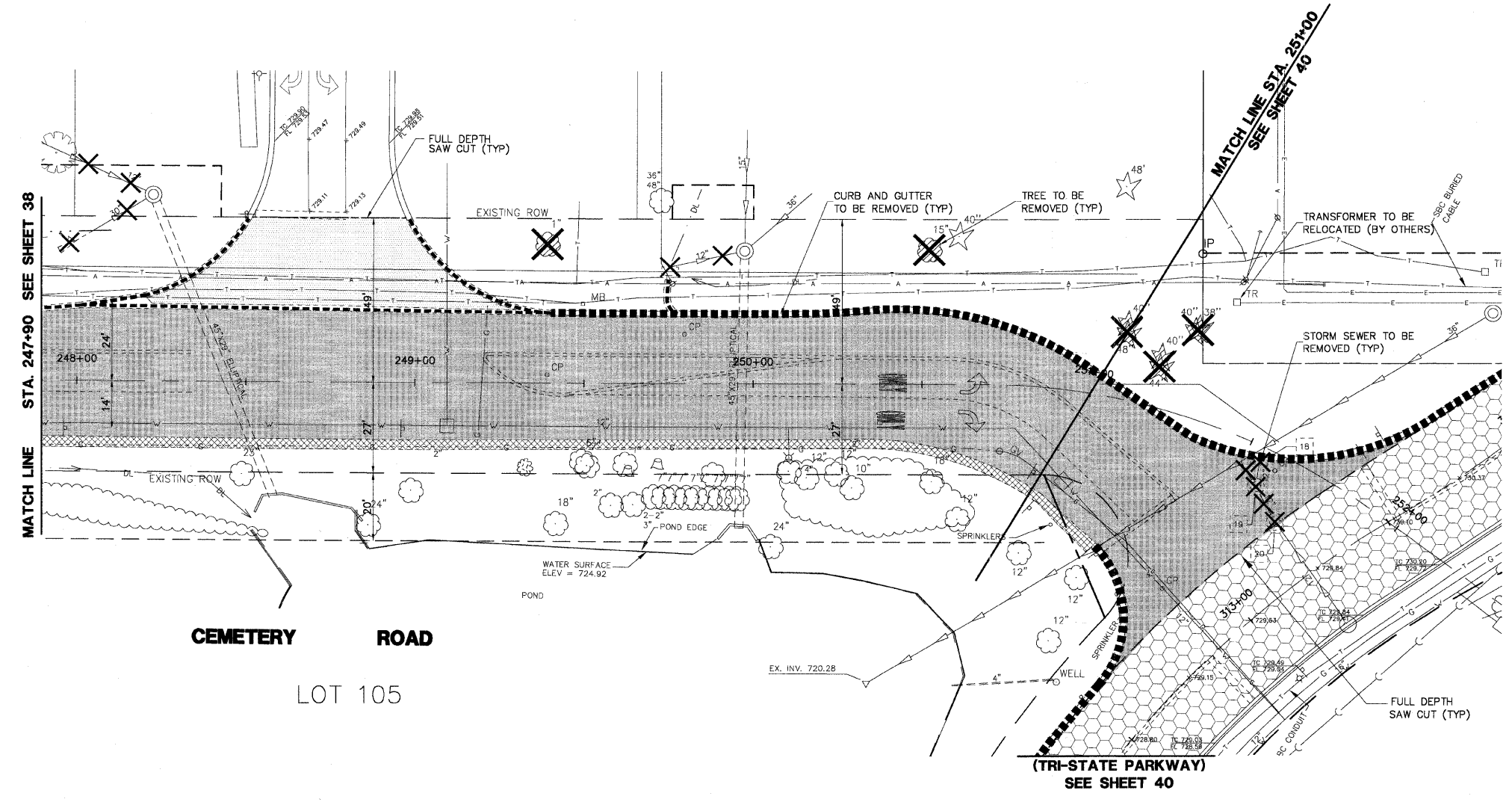
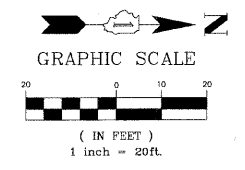
F.A.U. R.T.E.	SECTION	COUNTY	TOTAL SHEETS	SHEET NO.
2903	00-00047-00-FP	LAKE	180	39
DEMO - STA 247+90 TO TRI-STATE				
CONTRACT NO. 83845		ILLINOIS		

**DEMOLITION PLAN NOTES**

1. ALL MAILBOXES WITHIN PROJECT SHALL BE REMOVED, INSTALLED TEMPORARILY DURING CONSTRUCTION AND INSTALLED PERMANENTLY TO POST MASTER STANDARDS AT THE END OF PROJECT.
2. ALL FIRE HYDRANTS SHOWN FOR REMOVED SHALL BE PRESERVED FOR INSTALLATION AS SHOWN ON THE DRAINAGE & UTILITY PLANS, UNLESS OTHERWISE NOTED
3. CONTRACTOR SHALL PROVIDE TEMPORARY DRAINAGE, SPECIFICALLY AT THE PROFILE LOW POINTS. RIP RAP SEDIMENT BASINS, TEMPORARY DITCHING, TEMPORARY UNDERDRAINS SHALL BE USED TO FACILITATE POSITIVE DRAINAGE AWAY FROM THE PROPOSED AGGREGATE SUBGRADE.

**DEMOLITION CONDITIONS LEGEND**

- FULL DEPTH BITUMINOUS PAVEMENT REMOVAL 
- BITUMINOUS SURFACE REMOVAL, 2 1/2" 
- FULL DEPTH BITUMINOUS DRIVEWAY REMOVAL 
- B-6.12 CURB AND GUTTER REMOVAL 
- AGGREGATE REMOVAL 
- TREE TO BE REMOVED 
- STORM SEWER TO BE REMOVED 



PLANS PREPARED BY:  
**GEWALT HAMILTON**  
 ASSOCIATES, INC.  
 Consulting Engineers & Surveyors  
 850 Forest Edge Drive  
 Vernon Hills, IL 60061  
 (847) 478-9700  
 (847) 478-9701 Fax

REVISIONS	
NAME	DATE
REV.-1 IDOT COMMENTS	02-03-06
REV.-2 PLANS STAGED	06-02-06
REV.-3 LCDOT COMMENTS	11-20-06
REV.-5 PRE-FINAL SUB	02-20-09
PS&E SUBMITTAL	04-10-09

ILLINOIS DEPARTMENT OF TRANSPORTATION  
**DEMO PLAN**  
**STA 247+90 TO TRI-STATE**  
**PROPOSED ROADWAY WIDENING**  
**AND INTERSECTION IMPROVEMENTS**  
**CEMETERY ROAD**

SCALE: 1" = 20'  
 DATE: 07-27-05

DRAWN BY: CAD  
 DESIGNED BY: TPG  
 CHECKED BY: BLS