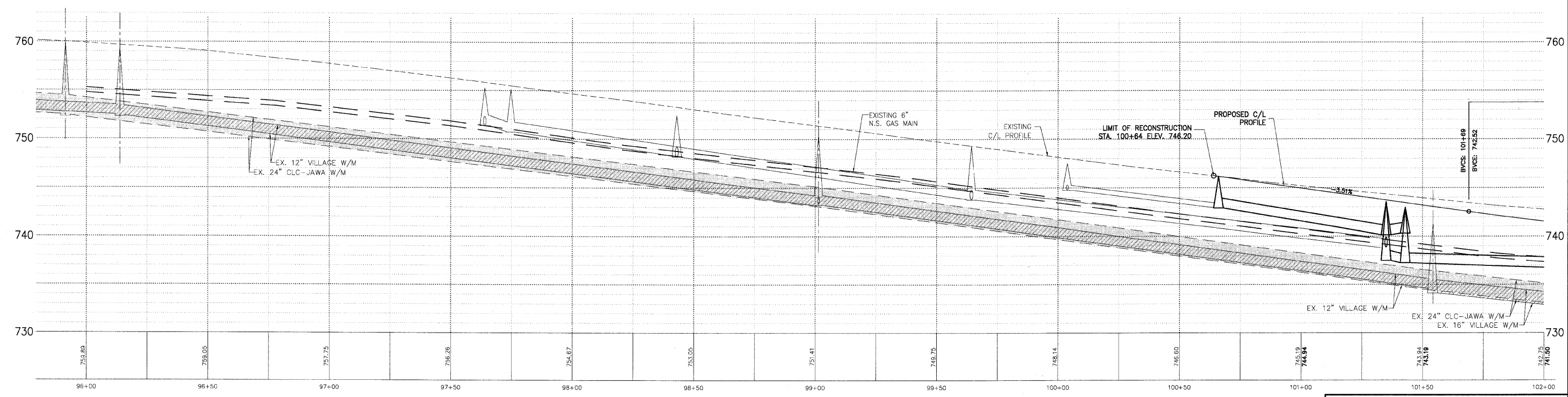
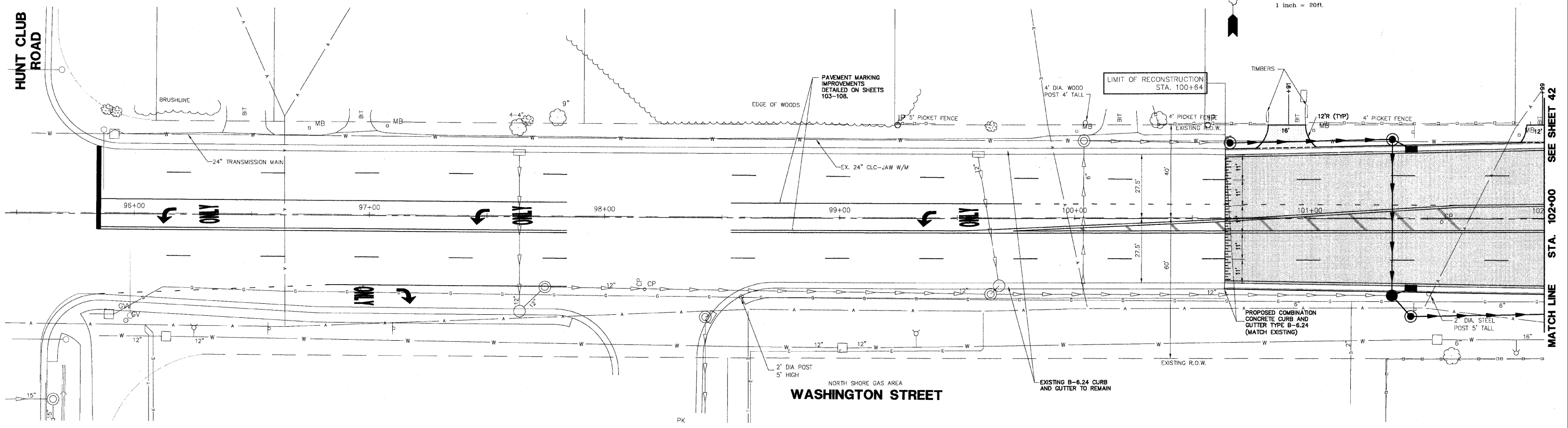
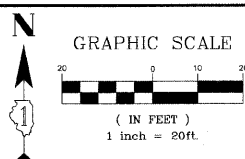


F.A.U. R.T.E.	SECTION	COUNTY	TOTAL SHEETS	SHEET NO.
1223	00-00047-00-FP	LAKE	180	41
PLAN & PROFILE STA 95+50 TO 102+00		CONTRACT NO. 83845 ILLINOIS		



PLAN & PROFILE LEGEND
WASHINGTON STREET

HOT-MIX ASPHALT PAVEMENT (FULL DEPTH), 12\"/>	TYPE B-6.24 COMB. CONC. CURB AND GUTTER (B-6.12 CEMETERY ROAD)
12\"/>	DEPRESSED SECTION CURB AND GUTTER
PROPOSED SHARED USE PATH	5\"/>
2\"/>	6\"/>
2\"/>	CURB RAMPS FOR SIDEWALK DETECTABLE WARNING
6\"/>	

PLANS PREPARED BY:
GEWALT HAMILTON ASSOCIATES, INC.
Consulting Engineers & Surveyors
850 Forest Edge Drive
Vernon Hills, IL 60061
(847) 478-9700
(847) 478-9700 Fax

REVISIONS	
NAME	DATE
REV.-1 IDOT COMMENTS	02-03-06
REV.-2 PLANS STAGED	06-02-06
REV.-5 PRE-FINAL SUB	02-20-09
PS&S SUBMITTAL	04-10-09

ILLINOIS DEPARTMENT OF TRANSPORTATION
PLAN AND PROFILE
STA 95+50 TO 102+00
PROPOSED ROADWAY RECONSTRUCTION
WASHINGTON STREET
SCALE: H: 1"=20' V: 1"=5'
DATE: 10-05-04
DRAWN BY: CGP
DESIGNED BY: TPG
CHECKED BY: BLS