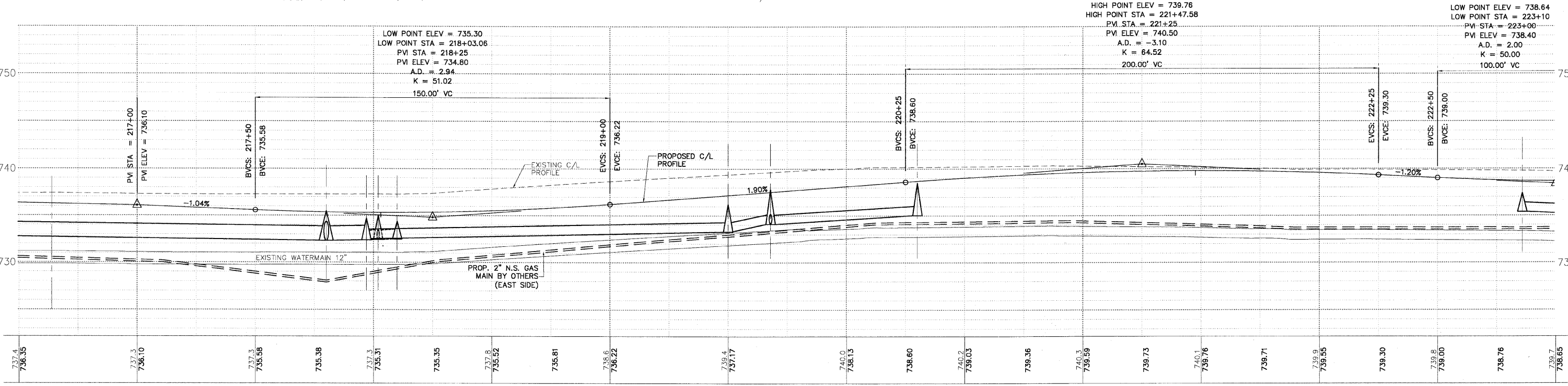
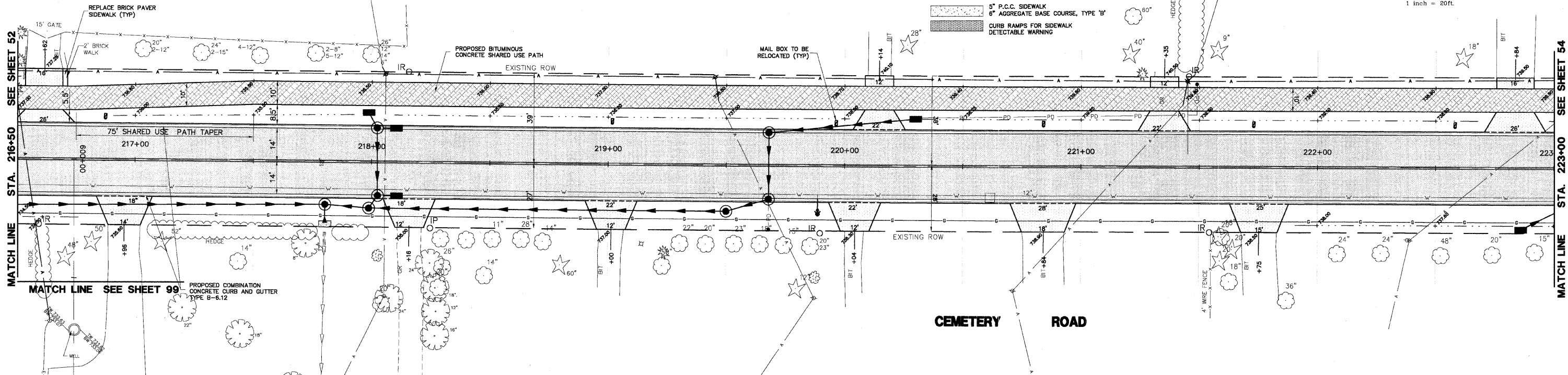
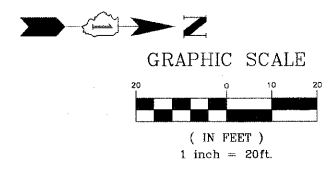


F.A.I.I. R.T.E.	SECTION	COUNTY	TOTAL SHEETS	SHEET NO.
2903	00-00047-00-FP	LAKE	180	53
P&P-CEM RD STA 216+50 TO 223+00				
CONTRACT NO. 83845		ILLINOIS		

**PLAN & PROFILE LEGEND**

- HOT-MIX ASPHALT PAVEMENT (FULL DEPTH), 8" 12" AGGREGATE SUBGRADE
- PROPOSED SHARED USE PATH 2" HOT-MIX ASPHALT SURFACE COURSE, MIX 'D', N50 2" HOT-MIX ASPHALT BINDER COURSE, IL-19.0, N50 6" AGGREGATE BASE COURSE, TYPE 'B'
- PROPOSED MINOR ACCESS DRIVEWAY 2 1/2" HOT-MIX ASPHALT SURFACE COURSE, MIX 'D', N50 6" AGGREGATE BASE COURSE, TYPE 'B'
- TYPE B-6.12 COMB. CONC. CURBS AND GUTTER (B-6.24 WASHINGTON STREET)
- DEPRESSED SECTION CURB AND GUTTER
- 5" P.C.C. SIDEWALK 6" AGGREGATE BASE COURSE, TYPE 'B'
- CURB RAMPS FOR SIDEWALK DETECTABLE WARNING



ILLINOIS DEPARTMENT OF TRANSPORTATION

**PLAN AND PROFILE  
PROPOSED ROADWAY WIDENING  
AND INTERSECTION IMPROVEMENTS  
CEMETERY ROAD**

PLANS PREPARED BY:  
**GEWALT HAMILTON**  
ASSOCIATES, INC.  
Consulting Engineers & Surveyors  
850 Forest Ridge Drive  
Vernon Hills, IL 60061  
(847) 478-9700  
(847) 478-9701 Fax

REVISIONS	
NAME	DATE
REV.-1 IDOT COMMENTS	02-05-06
REV.-2 PLANS STAGED	06-02-06
REV.-5 PRE-FINAL SUB	02-20-09
PS&S SUBMITTAL	04-10-09

SCALE: H: 1"=20' V: 1"=5'  
DATE: 10-05-04  
DRAWN BY: CGP  
DESIGNED BY: TPG  
CHECKED BY: BLS