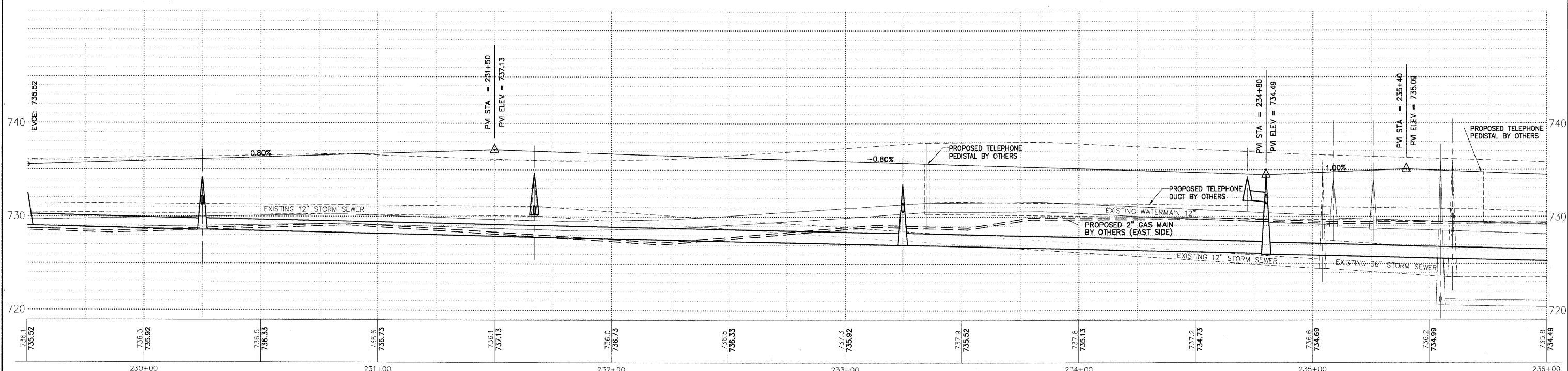
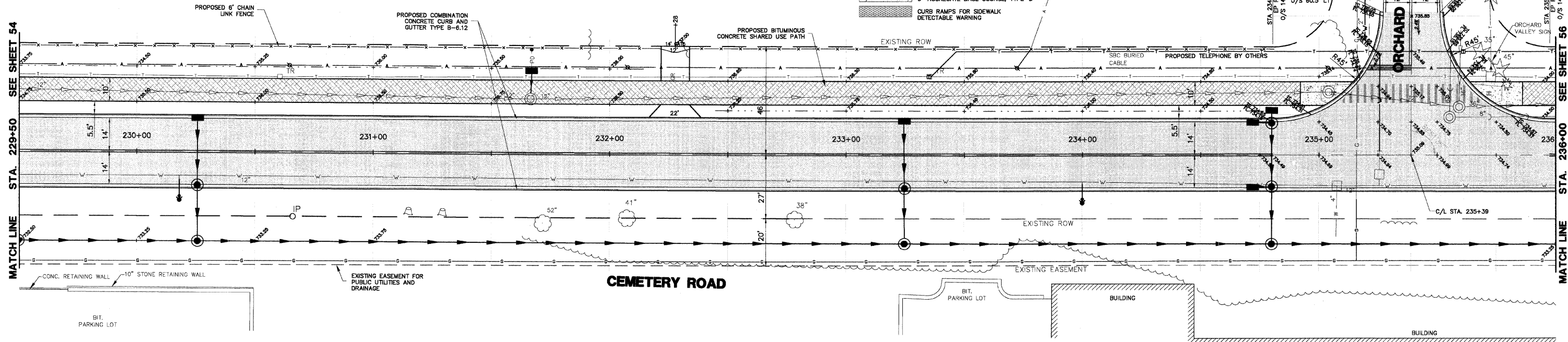
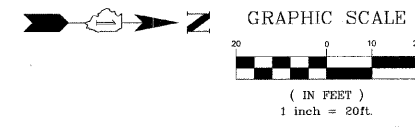


F.A.U. NO.	SECTION	COUNTY	TOTAL SHEETS	SHEET NO.
2903	00-00047-00-FP	LAKE	180	55
P&P CEM RD STA 229+50 TO 236+00				
CONTRACT NO. 83845 ILLINOIS				

PLAN & PROFILE LEGEND

- CEMETERY ROAD
- HOT-MIX ASPHALT PAVEMENT (FULL DEPTH), 8"
- 12" AGGREGATE SUBGRADE
- PROPOSED SHARED USE PATH
- 2" HOT-MIX ASPHALT SURFACE COURSE, MIX 'D', N50
- 2" HOT-MIX ASPHALT BINDER COURSE, IL-19.0, N50
- 6" AGGREGATE BASE COURSE, TYPE 'B'
- PROPOSED MINOR ACCESS DRIVEWAY
- 2 1/2" HOT-MIX ASPHALT SURFACE COURSE, MIX 'D', N50
- 6" AGGREGATE BASE COURSE, TYPE 'B'
- TYPE B-6.12 COMB. CONC. CURB AND GUTTER (B-6.24 WASHINGTON STREET)
- DEPRESSED SECTION CURB AND GUTTER
- 5" P.C.C. SIDEWALK
- 6" AGGREGATE BASE COURSE, TYPE 'B'
- CURB RAMP FOR SIDEWALK
- DETECTABLE WARNING



PLANS PREPARED BY:
GEWALT HAMILTON
 ASSOCIATES, INC.
 Consulting Engineers & Surveyors
 850 Forest Edge Drive
 Vernon Hills, IL 60061
 (847) 478-9700
 (847) 478-9701 Fax

REVISIONS	
NAME	DATE
REV.-1 IDOT COMMENTS	02-03-06
REV.-2 PLANS STAGED	06-02-06
REV.-5 PRE-FINAL SUB	02-20-09
PS&S SUBMITTAL	04-10-09

ILLINOIS DEPARTMENT OF TRANSPORTATION

PLAN AND PROFILE
 PROPOSED ROADWAY WIDENING
 AND INTERSECTION IMPROVEMENTS
 CEMETERY ROAD

SCALE: H: 1"=20' V: 1"=5'
 DATE: 10-05-04

DRAWN BY: CGP
 DESIGNED BY: TPG
 CHECKED BY: BLS