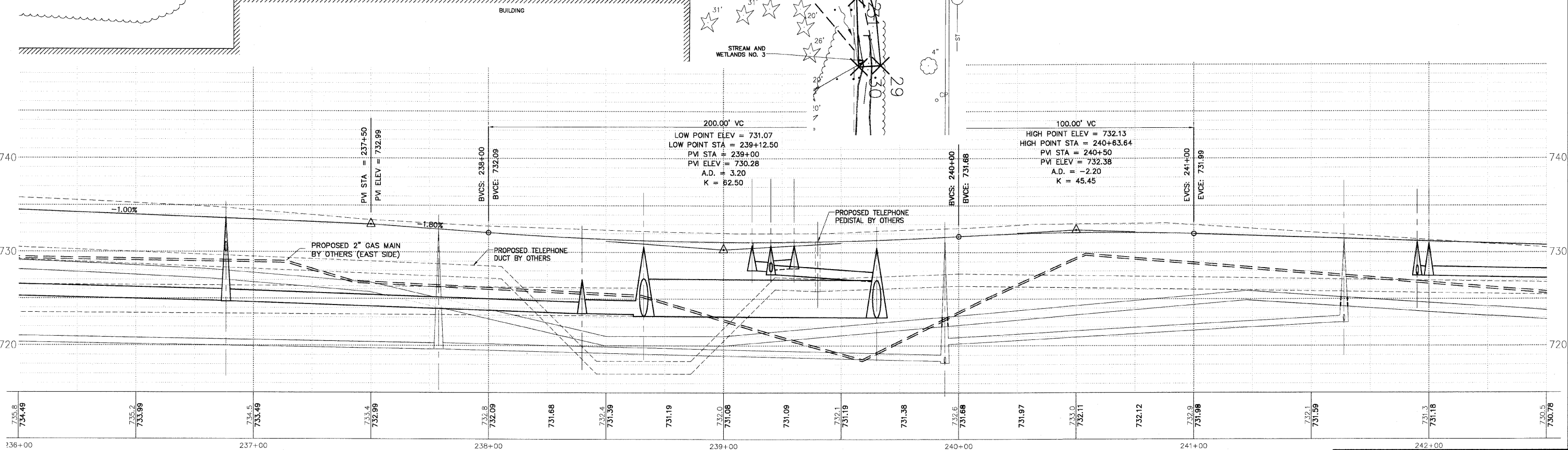
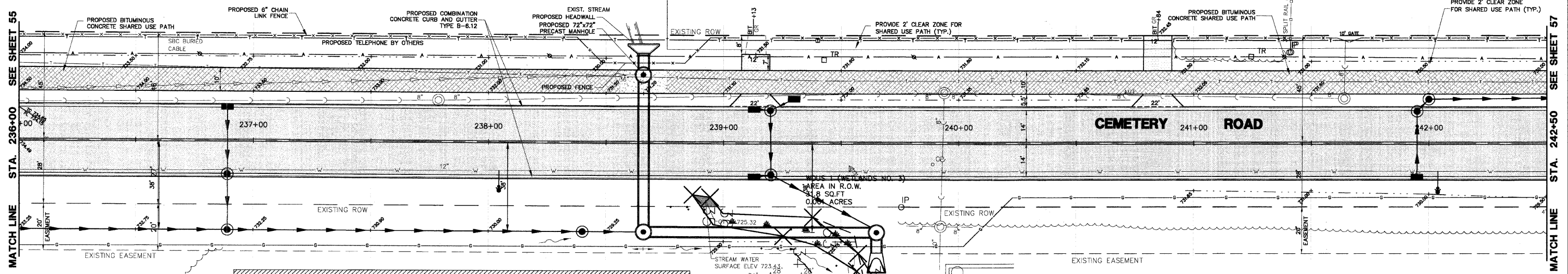
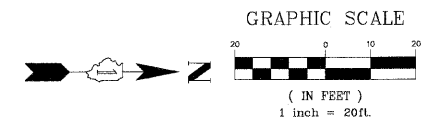


F.A.U. R.T.E.	SECTION	COUNTY	TOTAL SHEETS	SHEET NO.
2903	00-00047-00-FP	LAKE	180	56
P&P CEM RD STA 236+00 TO 242+50				
CONTRACT NO. 83845		ILLINOIS		

PLAN & PROFILE LEGEND

- HOT-MIX ASPHALT PAVEMENT (FULL DEPTH), 8" 12" AGGREGATE SUBGRADE
- PROPOSED SHARED USE PATH 2" HOT-MIX ASPHALT SURFACE COURSE, MIX 'D', N50 2" HOT-MIX ASPHALT BINDER COURSE, IL-19.0, N50 6" AGGREGATE BASE COURSE, TYPE 'B'
- PROPOSED MINOR ACCESS DRIVEWAY 2 1/2" HOT-MIX ASPHALT SURFACE COURSE, MIX 'D', N50 6" AGGREGATE BASE COURSE, TYPE 'B'
- TYPE B-6.12 COMB. CONC. CURB AND GUTTER (B-6.24 WASHINGTON STREET)
- DEPRESSED SECTION CURB AND GUTTER
- 5' P.C.C. SIDEWALK 6" AGGREGATE BASE COURSE, TYPE 'B'
- CURB RAMP FOR SIDEWALK DETECTABLE WARNING



ILLINOIS DEPARTMENT OF TRANSPORTATION

**PLAN AND PROFILE
PROPOSED ROADWAY WIDENING
AND INTERSECTION IMPROVEMENTS
CEMETERY ROAD**

PLANS PREPARED BY:
GEWALT HAMILTON
ASSOCIATES, INC.
Consulting Engineers & Surveyors
850 Forest Ridge Drive
Vernon Hills, IL 60061
(847) 478-9700
(847) 478-9701 Fax

REVISIONS	
NAME	DATE
REV.-1 IDOT COMMENTS	02-03-06
REV.-2 PLANS STAGED	06-02-06
REV.-5 PRE-FINAL SUB	02-20-09
PS&S SUBMITTAL	04-10-09

SCALE: H: 1"=20' V: 1"=5'
DATE: 10-05-04
DRAWN BY: CGP
DESIGNED BY: TPG
CHECKED BY: BLS