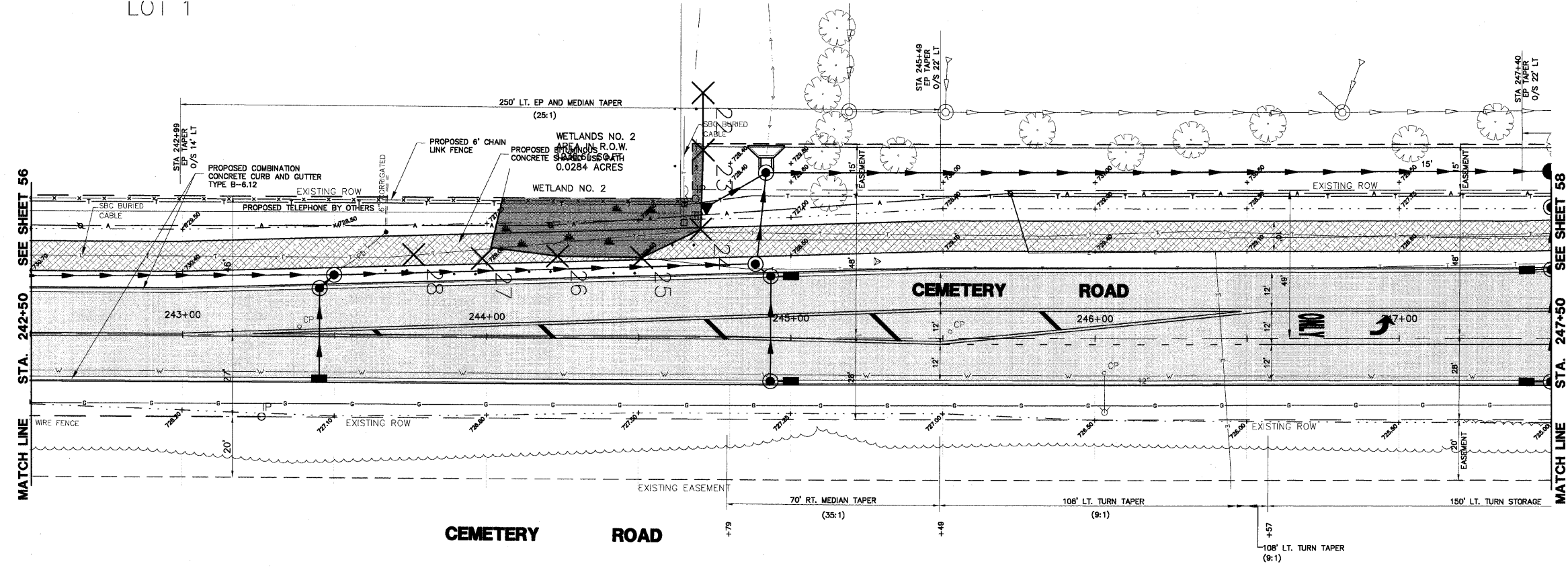
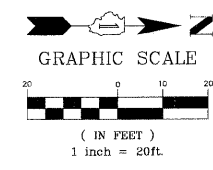
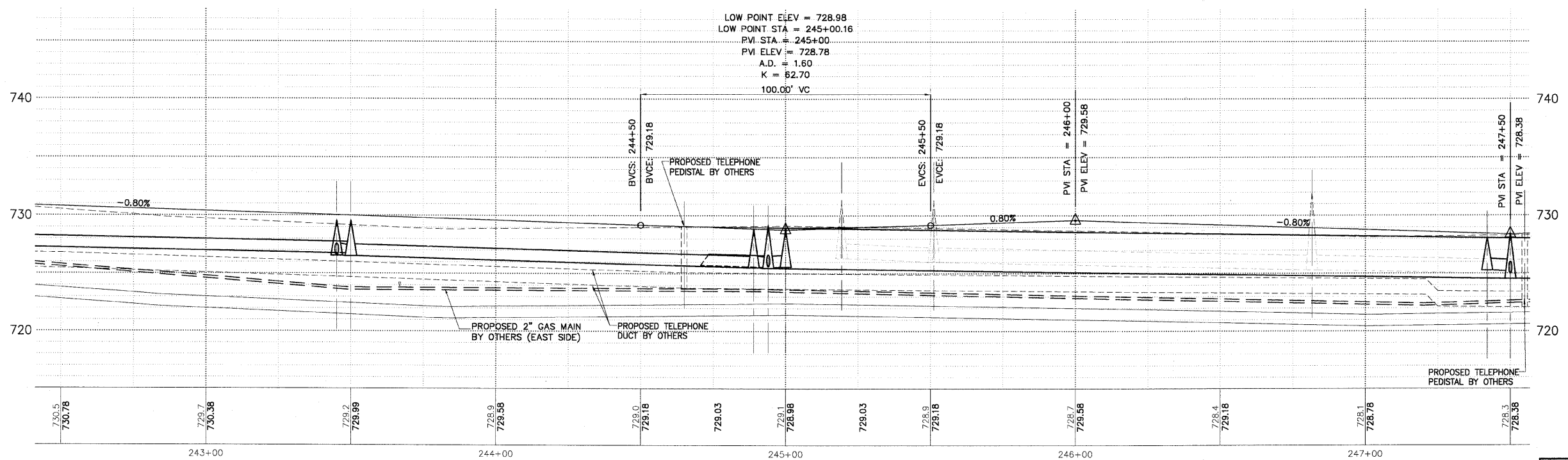


F.A.U. R.T.E.	SECTION	COUNTY	TOTAL SHEETS	SHEET NO.
2903	00-00047-00-FP	LAKE	180	57
P&P CEM RD STA 242+50 TO 247+50				
CONTRACT NO. 83845		ILLINOIS		

LOT 1



- PLAN & PROFILE LEGEND**
- CEMETERY ROAD
  - HOT-MIX ASPHALT PAVEMENT (FULL DEPTH), 8" 12" AGGREGATE SUBGRADE
  - PROPOSED SHARED USE PATH 2" HOT-MIX ASPHALT SURFACE COURSE, MIX 'D', N50 2" HOT-MIX ASPHALT BINDER COURSE, IL-19.0, N50 6" AGGREGATE BASE COURSE, TYPE 'B'
  - PROPOSED MINOR ACCESS DRIVEWAY 2 1/2" HOT-MIX ASPHALT SURFACE COURSE, MIX 'D', N50 6" AGGREGATE BASE COURSE, TYPE 'B'
  - TYPE B-6.12 COMB. CONC. CURB AND GUTTER (B-6.24 WASHINGTON STREET)
  - DEPRESSED SECTION CURB AND GUTTER
  - 5" P.C.C. SIDEWALK 6" AGGREGATE BASE COURSE, TYPE 'B'
  - CURB RAMPS FOR SIDEWALK DETECTABLE WARNING



PLANS PREPARED BY:  
**GEWALT HAMILTON ASSOCIATES, INC.**  
 Consulting Engineers & Surveyors  
 850 Forest Edge Drive  
 Vernon Hills, IL 60061  
 (847) 478-9700  
 (847) 478-9701 Fax

REVISIONS	
NAME	DATE
REV.-1 IDOT COMMENTS	02-03-06
REV.-2 PLANS STAGED	06-02-06
REV.-5 PRE-FINAL SUB	02-20-09
PS&S SUBMITTAL	04-10-09

ILLINOIS DEPARTMENT OF TRANSPORTATION

**PLAN AND PROFILE  
 PROPOSED ROADWAY WIDENING  
 AND INTERSECTION IMPROVEMENTS  
 CEMETERY ROAD**

SCALE: H: 1"=20' V: 1"=5'  
 DATE: 10-05-04

DRAWN BY: CGP  
 DESIGNED BY: TPG  
 CHECKED BY: BLS