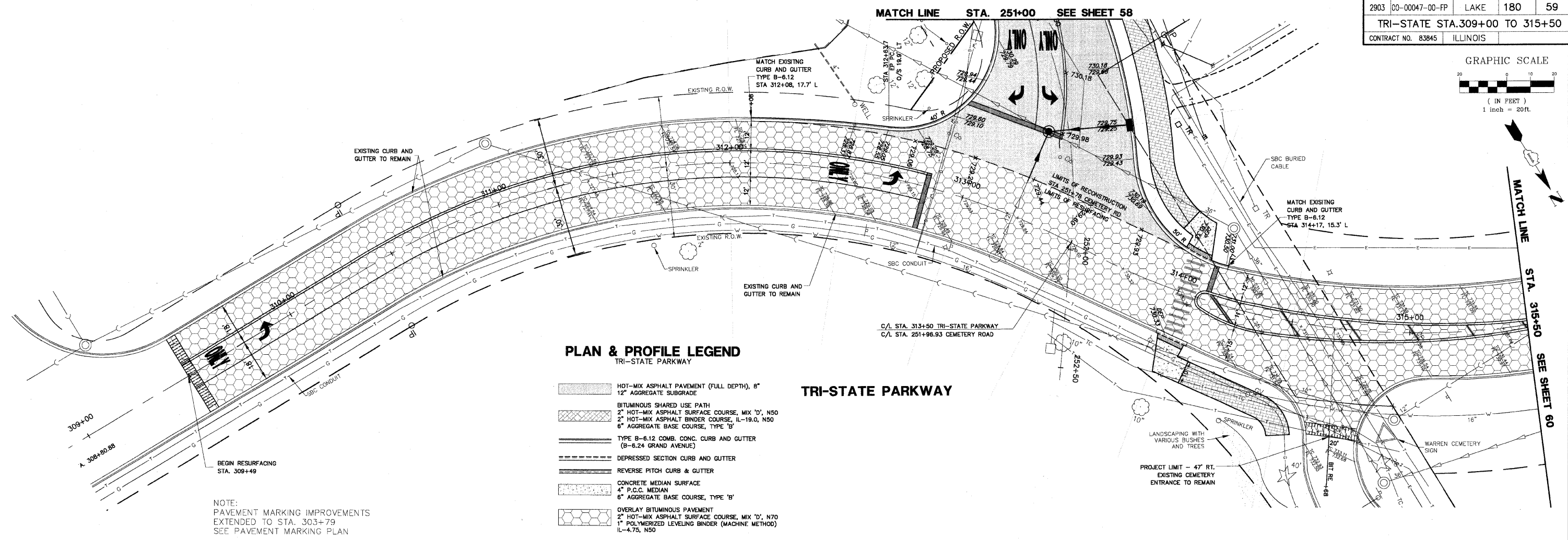
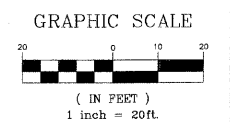
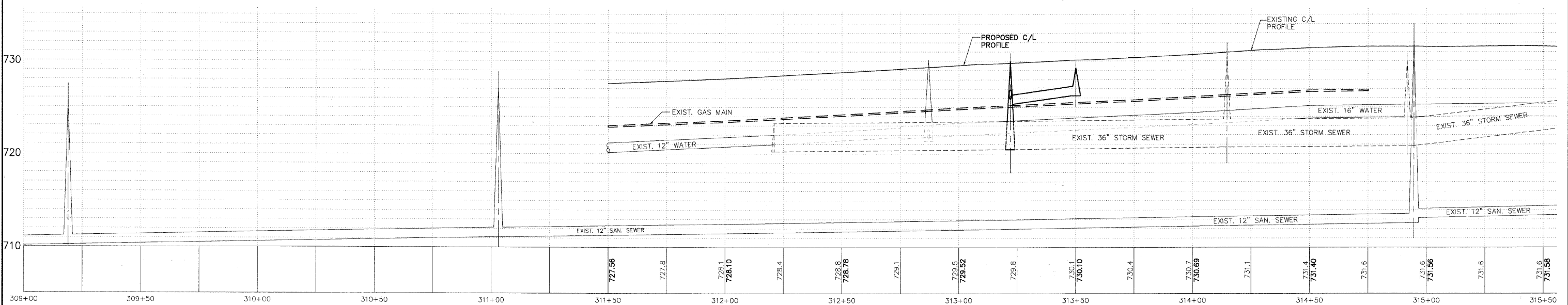


F.A.U. R.T.E.	SECTION	COUNTY	TOTAL SHEETS	SHEET NO.
2903	00-0047-00-FP	LAKE	180	59
TRI-STATE STA.309+00 TO 315+50				
CONTRACT NO. 83845 ILLINOIS				



- PLAN & PROFILE LEGEND**  
TRI-STATE PARKWAY
- HOT-MIX ASPHALT PAVEMENT (FULL DEPTH), 8" 12" AGGREGATE SUBGRADE
  - BITUMINOUS SHARED USE PATH
  - 2" HOT-MIX ASPHALT SURFACE COURSE, MIX 'D', N50
  - 2" HOT-MIX ASPHALT BINDER COURSE, IL-19.0, N50
  - 6" AGGREGATE BASE COURSE, TYPE 'B'
  - TYPE B-6.12 COMB. CONC. CURB AND GUTTER (B-6.24 GRAND AVENUE)
  - DEPRESSED SECTION CURB AND GUTTER
  - REVERSE PITCH CURB & GUTTER
  - CONCRETE MEDIAN SURFACE
  - 4" P.C.C. MEDIAN
  - 6" AGGREGATE BASE COURSE, TYPE 'B'
  - OVERLAY BITUMINOUS PAVEMENT
  - 2" HOT-MIX ASPHALT SURFACE COURSE, MIX 'D', N70
  - 1" POLYMERIZED LEVELING BINDER (MACHINE METHOD) IL-4.75, N50

NOTE:  
PAVEMENT MARKING IMPROVEMENTS  
EXTENDED TO STA. 303+79  
SEE PAVEMENT MARKING PLAN



PLANS PREPARED BY:  
**GEWALT HAMILTON**  
ASSOCIATES, INC.  
Consulting Engineers & Surveyors  
850 Forest Ridge Drive  
Warren Hills, IL 60091  
(847) 478-9700  
(847) 478-9701 Fax

REVISIONS	
NAME	DATE
REV.-1 IDOT COMMENTS	02-03-06
REV.-2 PLANS STAGED	06-02-06
REV.-5 PRE-FINAL SUB	02-20-09
PS&S SUBMITTAL	04-10-09

ILLINOIS DEPARTMENT OF TRANSPORTATION

**PLAN AND PROFILE**  
**PROPOSED ROADWAY WIDENING**  
**AND INTERSECTION IMPROVEMENTS**  
**TRI-STATE PARKWAY**

SCALE: H: 1"=20' V: 1"=5'  
DATE: 10-05-04

DRAWN BY: CGP  
DESIGNED BY: TPG  
CHECKED BY: BLS