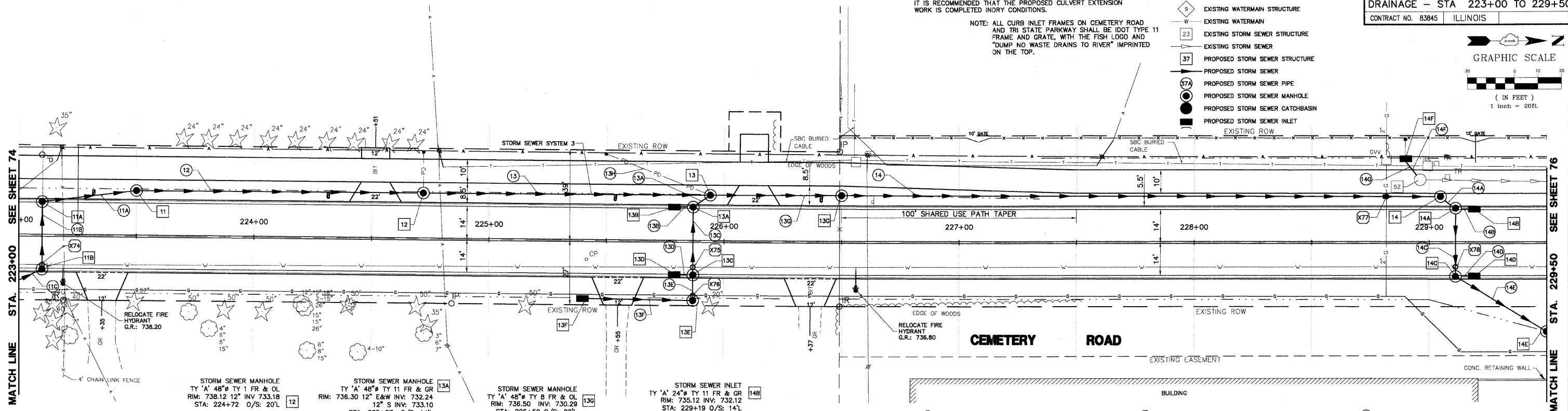
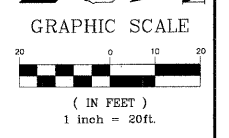


CONTRACTOR SHALL PROVIDE TEMPORARY DRAINAGE, SPECIFICALLY AT THE PROFILE LOW POINTS. RIP RAP SEDIMENT BASINS, TEMPORARY DITCHING, TEMPORARY UNDERDRAINS SHALL BE USED TO FACILITATE POSITIVE DRAINAGE AWAY FROM THE PROPOSED AGGREGATE SUBGRADE. IT IS RECOMMENDED THAT THE PROPOSED CULVERT EXTENSION WORK IS COMPLETED IN DRY CONDITIONS.

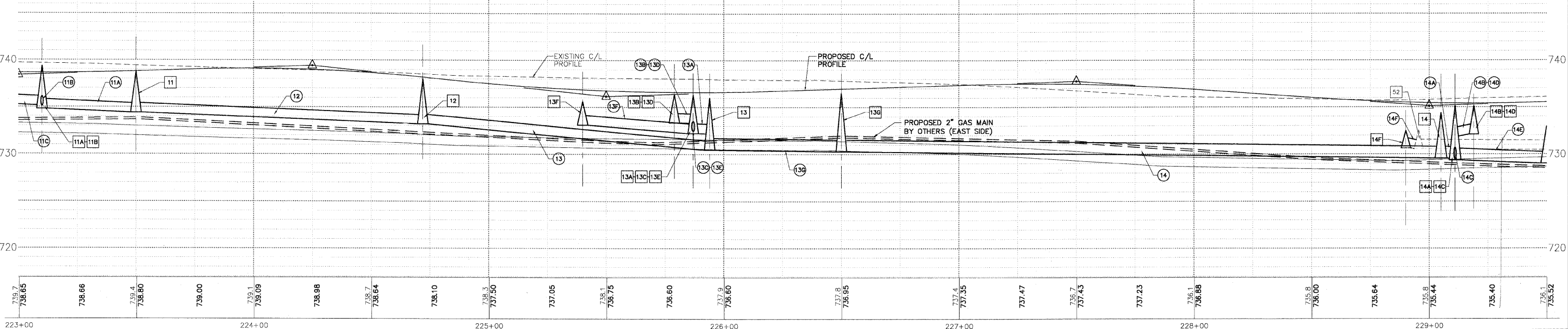
NOTE: ALL CURB INLET FRAMES ON CEMETERY ROAD AND TRI STATE PARKWAY SHALL BE IDOT TYPE 11 FRAME AND GRATE, WITH THE FISH LOGO AND "DUMP NO WASTE DRAINS TO RIVER" IMPRINTED ON THE TOP.

- DRAINAGE & UTILITY PLAN LEGEND**
- 5 EXISTING SANITARY STRUCTURE
 - 9 EXISTING SANITARY SEWER
 - 10 EXISTING WATERMAIN STRUCTURE
 - W EXISTING WATERMAIN
 - 23 EXISTING STORM SEWER STRUCTURE
 - 37 EXISTING STORM SEWER
 - 37 PROPOSED STORM SEWER STRUCTURE
 - PROPOSED STORM SEWER
 - 37A PROPOSED STORM SEWER PIPE
 - PROPOSED STORM SEWER MANHOLE
 - PROPOSED STORM SEWER CATCHBASIN
 - PROPOSED STORM SEWER INLET
 - EXISTING ROW

F.A.U. R.T.E.	SECTION	COUNTY	TOTAL SHEETS	SHEET NO.
2903	00-00047-00-FP	LAKE	180	75
DRAINAGE - STA 223+00 TO 229+50				
CONTRACT NO. 83845 ILLINOIS				



<p>STORM SEWER MANHOLE TY 'A' 48" TY 1 FR & OL RIM: 738.12 INV: 733.18 STA: 224+72 O/S: 20'L</p> <p>STORM SEWER MANHOLE TY 'A' 48" TY 8 FR & OL RIM: 736.00 INV: 733.10 STA: 225+94 O/S: 20'L</p> <p>STORM SEWER MANHOLE TY 'A' 48" TY 1 FR & OL RIM: 737.75 INV: 734.40 STA: 223+50 O/S: 20'L</p>	<p>STORM SEWER MANHOLE TY 'A' 48" TY 11 FR & GR RIM: 736.30 INV: 732.24 STA: 225+87 O/S: 14'L</p> <p>STORM SEWER INLET TY 'A' 24" TY 11 FR & GR RIM: 736.34 INV: 733.34 STA: 225+79 O/S: 14'L</p> <p>STORM SEWER MANHOLE TY 'A' 48" TY 11 FR & GR RIM: 736.30 INV: 732.52 STA: 225+87 O/S: 14'R</p> <p>STORM SEWER INLET TY 'A' 24" TY 11 FR & GR RIM: 736.34 INV: 733.43 STA: 225+79 O/S: 14'R</p>	<p>STORM SEWER MANHOLE TY 'A' 48" TY 8 FR & OL RIM: 736.50 INV: 730.29 STA: 226+50 O/S: 20'L</p> <p>STORM SEWER MANHOLE TY 'A' 48" TY 1 FR & CL RIM: 734.37 INV: 729.56 STA: 229+05 O/S: 36'L</p> <p>STORM SEWER INLET TY 'A' 24" TY 8 GR RIM: 732.80 INV: 730.75 STA: 228+90 O/S: 36'L</p> <p>STORM SEWER MANHOLE TY 'A' 48" TY 11 FR & GR RIM: 735.13 INV: 729.48 STA: 229+11 O/S: 14'L</p>	<p>STORM SEWER INLET TY 'A' 24" TY 11 FR & GR RIM: 735.12 INV: 732.12 STA: 229+19 O/S: 14'L</p> <p>STORM SEWER MANHOLE TY 'A' 48" TY 11 FR & GR RIM: 735.12 INV: 732.12 STA: 229+11 O/S: 14'R</p> <p>STORM SEWER INLET TY 'A' 24" TY 8 GR RIM: 735.12 INV: 732.12 STA: 229+19 O/S: 14'R</p> <p>STORM SEWER MANHOLE TY 'A' 48" TY 8 GR RIM: 732.50 INV: 729.00 STA: 229+50 O/S: 36'R</p>	<p>STORM SEWER CATCHBASIN RIM: 732.55 ADJ TO 734.80 12" N INV: 730.55 SW INV: 730.65 STA: 228+96 O/S: 26' L</p>	<p>25 LF 12" SS, CL A, TY 1, @ 1.00%, TBF 3.8 CY</p> <p>28 LF 12" SS, CL A, TY 1, @ 1.00%, TBF 3.1 CY</p> <p>40 LF 12" SS, CL A, TY 1, @ 1.00%, TBF 9.7 CY</p> <p>122 LF 12" SS, CL A, TY 1, @ 1.00%, TBF 38.5 CY</p> <p>122 LF 12" SS, CL A, TY 1, @ 2.23%, TBF 57.5 CY</p> <p>8 LF 12" SS, CL A, TY 1, @ 1.00%, TBF 2.3 CY</p> <p>11 LF 12" SS, CL A, TY 1, @ 1.00%, TBF 2.4 CY</p> <p>47 LF 4" SS PVC SDR 35, @ 1.00%, TBF 3.8 CY</p>	<p>8 LF 12" SS, CL A, TY 1, @ 3.00%, TBF 0.7 CY</p> <p>28 LF 12" SS, CL A, TY 1, @ 1.00%, TBF 4.7 CY</p> <p>8 LF 12" SS, CL A, TY 1, @ 3.00%, TBF 0.6 CY</p> <p>47 LF 12" SS, CL A, TY 1, @ 1.00%, TBF 7.6 CY</p> <p>56 LF 15" SS, CL A, TY 1, @ 0.30%, TBF 36.5 CY</p> <p>255 LF 15" SS, CL A, TY 1, @ 0.30%, TBF 125.6 CY</p> <p>8 LF 15" SS, CL A, TY 1, @ 1.00%, TBF 3.7 CY</p> <p>8 LF 12" SS, CL A, TY 1, @ 3.00%, TBF 0.7 CY</p>	<p>28 LF 15" SS, CL A, TY 1, @ 0.50%, TBF 10.6 CY</p> <p>8 LF 12" SS, CL A, TY 1, @ 3.00%, TBF 0.7 CY</p> <p>45 LF 15" SS, CL A, TY 1, @ 0.75%, TBF 17.5 CY</p> <p>10 LF 12" SS, CL A, TY 1, @ 1.00%, TBF 1.0 CY</p> <p>8 LF 4" SS, PVC SDR 35, @ 1.00%, TBF 0.7 CY</p>
--	---	---	---	---	--	---	---



<p>STORM OVER WATER B/STORM = 734.90 T/WATER = 732.80</p> <p>STORM OVER WATER B/STORM = 733.00 T/WATER = 730.80</p> <p>STORM OVER GAS B/STORM = 732.40 T/GAS = 731.40</p>	<p>GAS OVER STORM B/GAS = 732.60 T/STORM = 731.20</p> <p>STORM OVER WATER B/STIM = 729.20 T/WATER = 727.70</p>	<p>ILLINOIS DEPARTMENT OF TRANSPORTATION DRAINAGE AND UTILITY PLAN STA 223+00 TO 229+50 PROPOSED ROADWAY WIDENING AND INTERSECTION IMPROVEMENTS CEMETERY ROAD</p>	<p>PLANS PREPARED BY: GEWALT HAMILTON ASSOCIATES, INC. Consulting Engineers & Surveyors 850 Forest Edge Drive Vernon Hills, IL 60061 (847) 478-9700 (847) 478-9701 Fax</p>	<p>REVISIONS</p> <table border="1"> <tr> <th>NAME</th> <th>DATE</th> </tr> <tr> <td>REV.-1 IDOT COMMENTS</td> <td>02-03-06</td> </tr> <tr> <td>REV.-2 PLANS STAGED</td> <td>06-02-06</td> </tr> <tr> <td>REV.-5 PRE-FINAL SUB</td> <td>02-20-09</td> </tr> <tr> <td>PS&S SUBMITTAL</td> <td>04-10-09</td> </tr> </table>	NAME	DATE	REV.-1 IDOT COMMENTS	02-03-06	REV.-2 PLANS STAGED	06-02-06	REV.-5 PRE-FINAL SUB	02-20-09	PS&S SUBMITTAL	04-10-09	<p>DRAWN BY: CGP DESIGNED BY: TPG CHECKED BY: BLS</p>
NAME	DATE														
REV.-1 IDOT COMMENTS	02-03-06														
REV.-2 PLANS STAGED	06-02-06														
REV.-5 PRE-FINAL SUB	02-20-09														
PS&S SUBMITTAL	04-10-09														