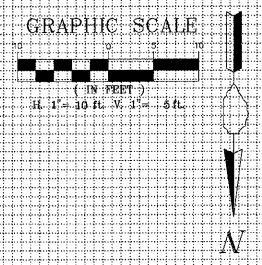
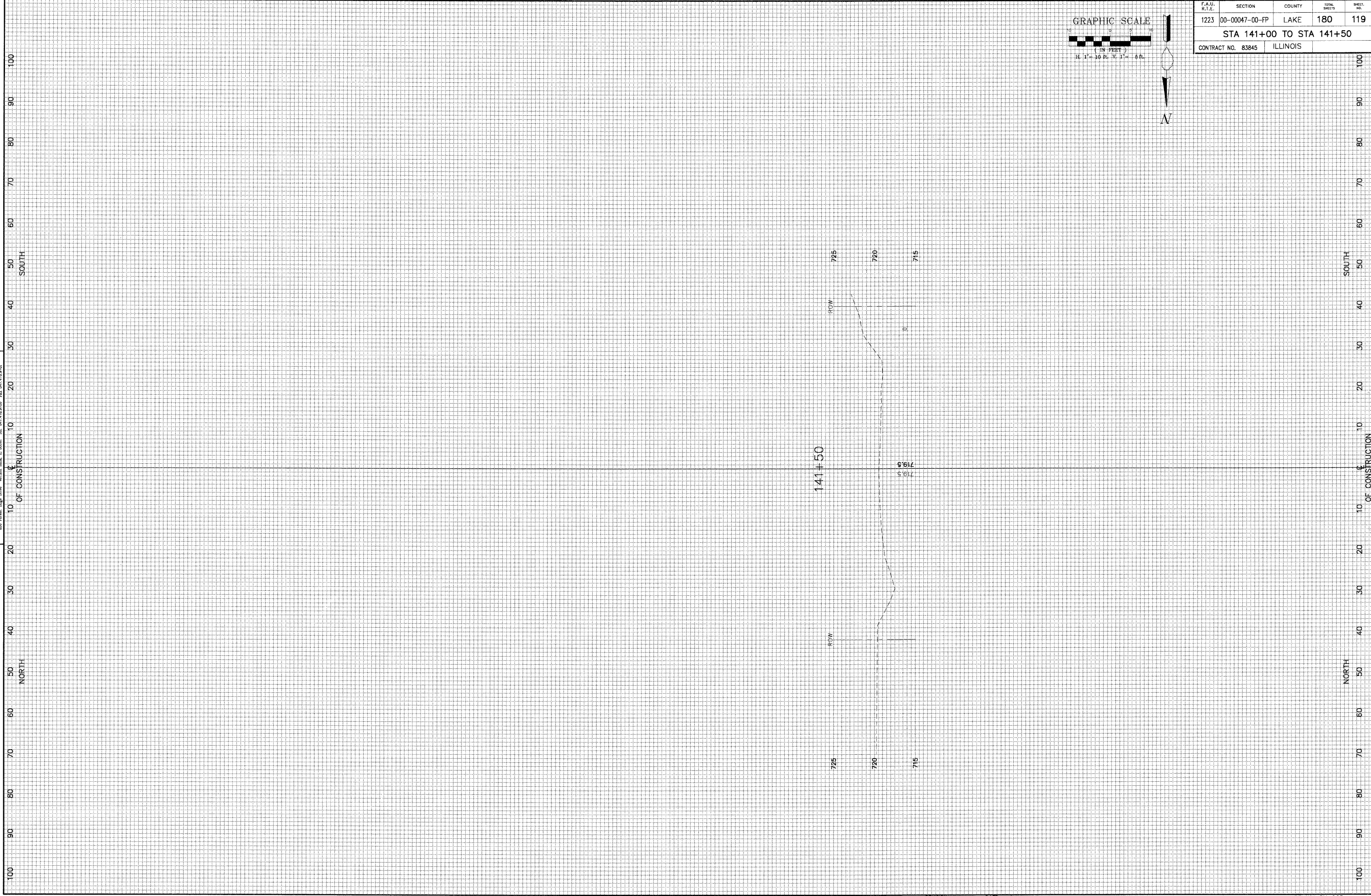


GEWALT HAMILTON
ASSOCIATES, INC.
CONSULTING ENGINEERS & SURVEYORS
Normal, Ill., U.S.A. Tel. 815/243-8700 Fax 815/243-8701
850 Forest Ridge Drive



F.A.U. R.T.E.	SECTION	COUNTY	TOTAL SHEETS	SHEET NO.
1223	00-00047-00-FP	LAKE	180	119
STA 141+00 TO STA 141+50				
CONTRACT NO. 83845		ILLINOIS		

REVISION	DATE	REVISION	DATE
REV-5 PRE-FINAL SUB	02-20-09		
REV-2 PLANS STAGED	08-02-08		
REV-1 100% COMMENTS	02-03-08	PS&E SUBMITTAL	04-10-09

WASHINGTON STREET

SCALE: H:1"=10' V:1"=5'
DATE: 12-10-04

DRAWN BY: CGP
DESIGNED BY: TPG
CHECKED BY: BLS

5/05/12 MKS REG-046