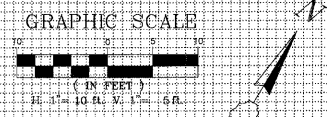
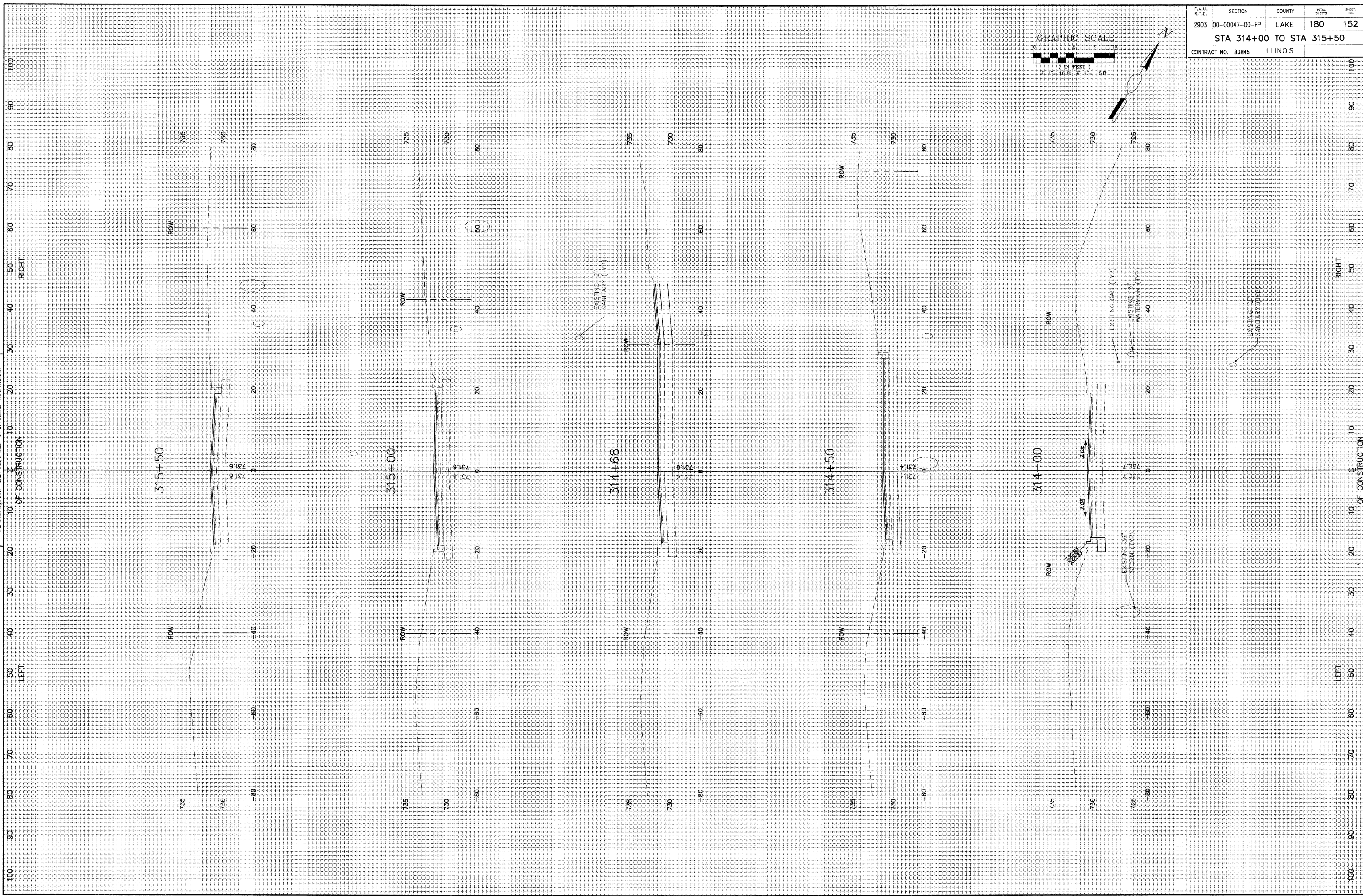


GEWALT HAMILTON
ASSOCIATES, INC.

CONSULTING ENGINEERS & SURVEYORS
Normal, Ill. U. 60091 Tel. 647.788.0000 Fax 647.788.0700

650 Forest Edge Drive



F.A.U. R.T.E.	SECTION	COUNTY	TOTAL SHEETS	SHEET NO.
2903	00-00047-00-FP	LAKE	180	152
CONTRACT NO. 83845			ILLINOIS	

STA 314+00 TO STA 315+50

100
90
80
70
60
50
40
30
20
10
0
10
20
30
40
50
60
70
80
90
100

RIGHT

LEFT

RIGHT

LEFT

REVISION	DATE	REVISION	DATE
REV -5 PRE-FINAL SUB	02-20-09		
REV -2 PLANS STAGED	08-02-06		
REV -1 100% COMM'S	02-03-06	PS&E SUBMITTAL	04-10-09

TRI-STATE PARKWAY

SCALE: H:1"=10' V:1"=5'
DATE: 1-27-05

DRAWN BY: CGP
DESIGNED BY: TFG
CHECKED BY: BLS