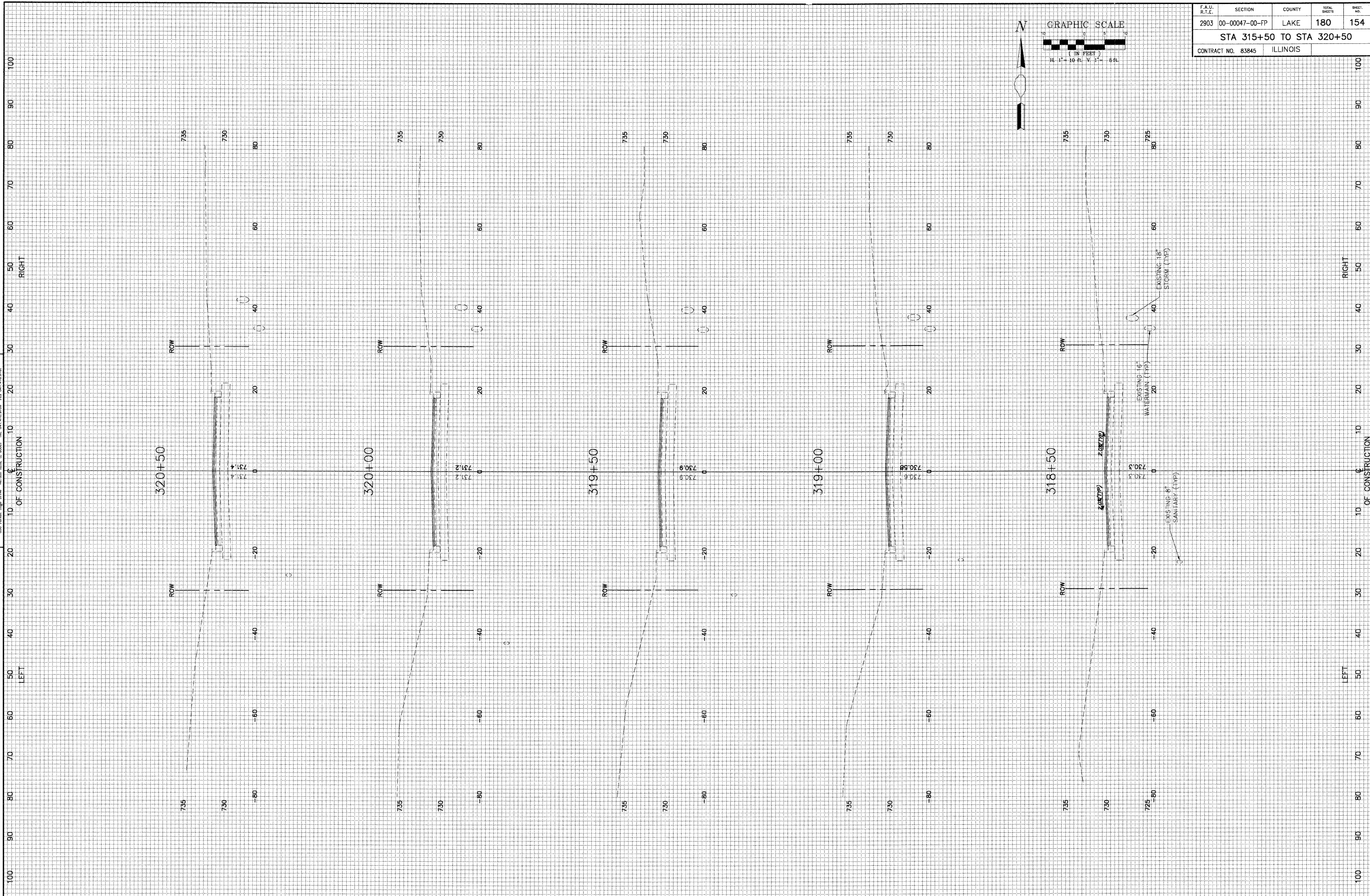
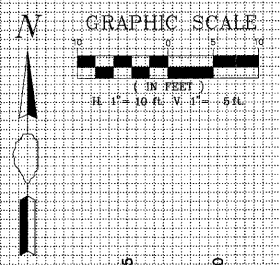


GEWALT HAMILTON
ASSOCIATES, INC.

CONSULTING ENGINEERS & SURVEYORS
800 Rowlett Edge Drive, Vernon Hills, IL 60061, Tel. 847.276.6700 Fax 847.276.6703

F.A.U. R.T.E.	SECTION	COUNTY	TOTAL SHEETS	SHEET NO.
2903	00-00047-00-PP	LAKE	180	154
STA 315+50 TO STA 320+50				
CONTRACT NO. 83845		ILLINOIS		



REVISION	DATE	REVISION	DATE
REV. 5 PRE-FINAL SUB	02-20-09		
REV. 4 PLANS STAGED	08-02-08		
REV. 1 100% COMMENTS	02-03-08	PS&T SUBMITTAL	04-10-09

TRI-STATE PARKWAY SCALE: H:1"=10' V:1"=5' DRAWN BY: CGP
DATE: 1-27-05 DESIGNED BY: TPG CHECKED BY: BLS