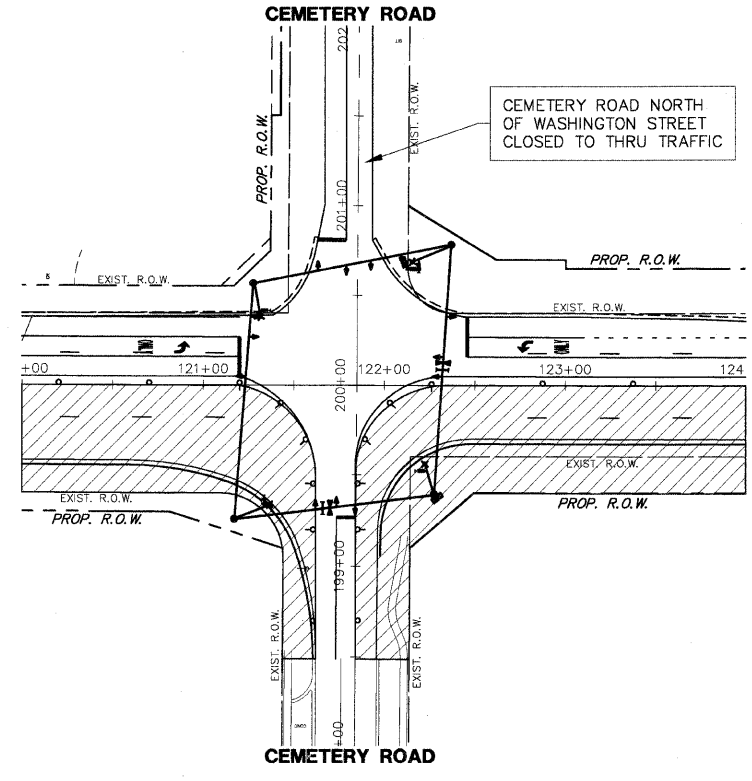
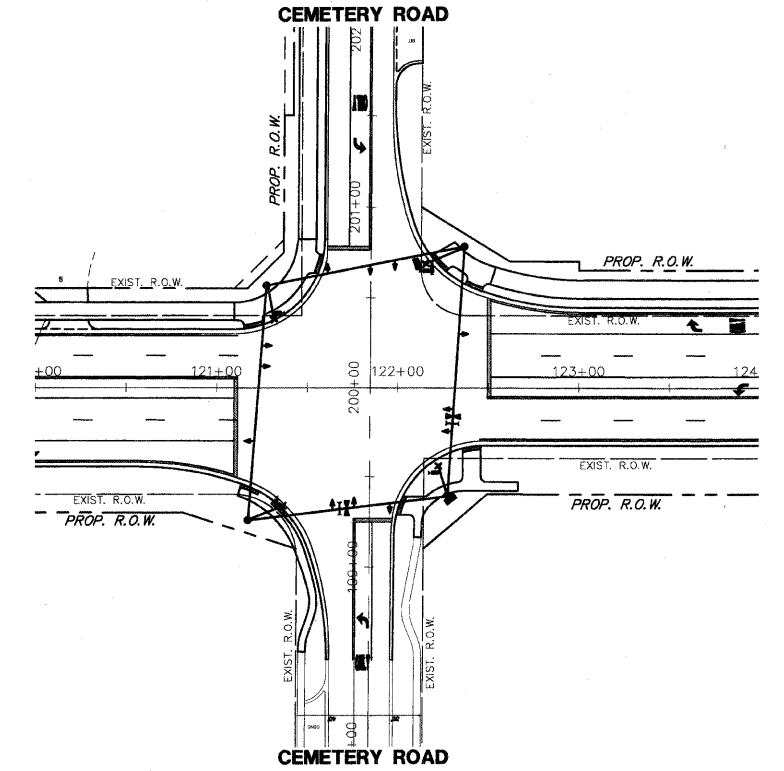


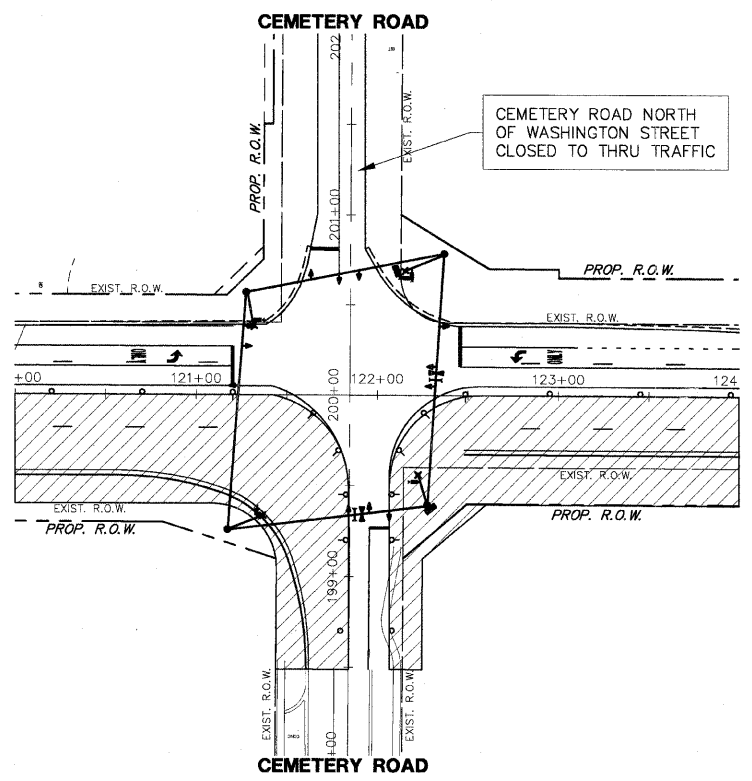
**STAGE 1**



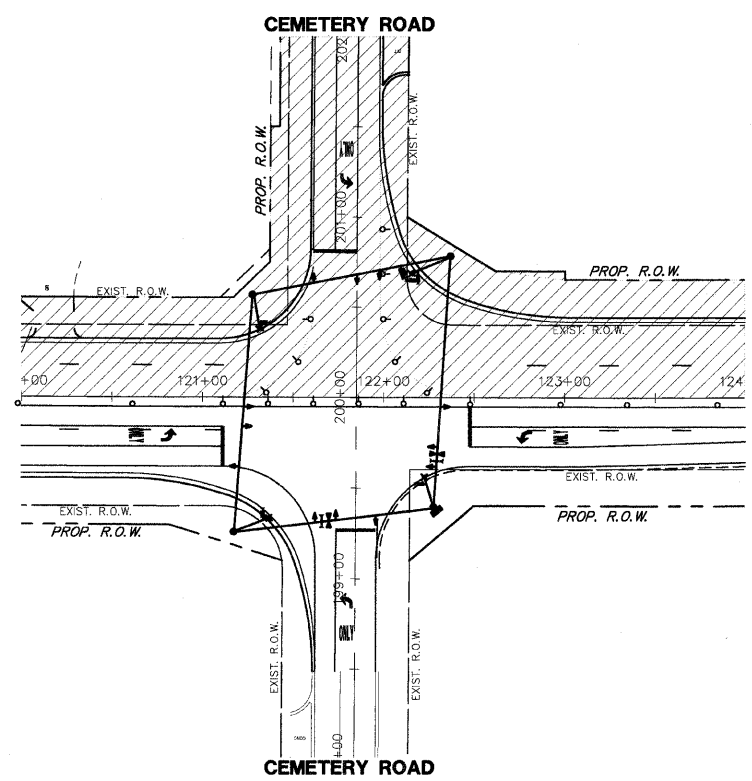
**STAGE 2B**



**STAGE 4**



**STAGE 2A**



**STAGE 3**

- LEGEND**
- TEMPORARY PAVEMENT
  - WORK AREA
  - SIGN
  - ARROW BOARD
  - VERTICAL BOARD
  - TYPE II BARRICADES WITH STEADY BURN LIGHT (SHRP BARRICADES USED FOR LANE TAPERS)
  - TYPE II BARRICADES WITH FLASHING LIGHTS
  - TYPE III BARRICADE

**NOTE:**  
TRAFFIC CONTROL SHALL BE IN ACCORDANCE WITH THE DETAILS SHOWN IN THE PLANS AND THE APPLICABLE PORTIONS OF LAKE COUNTY STANDARDS LC7003 AND LC7004.

PLANS PREPARED BY:  
**GEWALT HAMILTON ASSOCIATES, INC.**  
Consulting Engineers & Surveyors  
850 Forest Edge Drive  
Vernon Hills, IL 60061  
(847) 478-9700  
(847) 478-9700 Fax

REVISIONS	
NAME	DATE
PER IDOT/LCDOT REVIEW	02-15-05
PER LCDOT REVIEW	09-01-05
R-2 PLANS STAGED	06-02-06
R-3 PER LCDOT REVIEW	11-20-06
REV.-5 PRE-FINAL SUB	02-20-09

LAKE COUNTY DIVISION OF TRANSPORTATION  
**TEMPORARY TRAFFIC SIGNAL STAGING**  
**WASHINGTON STREET AT CEMETERY ROAD**  
SCALE: 1"=50'  
DATE: 11-15-04  
DRAWN BY: CGP  
DESIGNED BY: JRD  
CHECKED BY: BLS

REVISION	DATE	REVISION	DATE
		PS&E SUBMITAL	4-10-09