

|                      |                       |                      |           |
|----------------------|-----------------------|----------------------|-----------|
| SECTION              | COUNTY                | TOTAL SHEETS         | SHEET NO. |
| 09-00088-00-RS       | WHITE                 | 3                    | 3         |
| CITY OF CARMEL       |                       | VARIOUS CITY STREETS |           |
| FED. RD. DIST. NO. 9 | LEC JOB NO. H091010CA |                      |           |

CONTRACT 99402

323 W. 3RD ST.  
P.O. BOX 160  
MT. CARMEL, IL  
62863  
PHONE: (618)-262-8651  
FAX: (618)-263-3327

405 W. STATE ST.  
SUITE 1  
PRINCETON, IN  
47570  
PHONE: (812)-386-7611  
FAX: (812)-385-2812

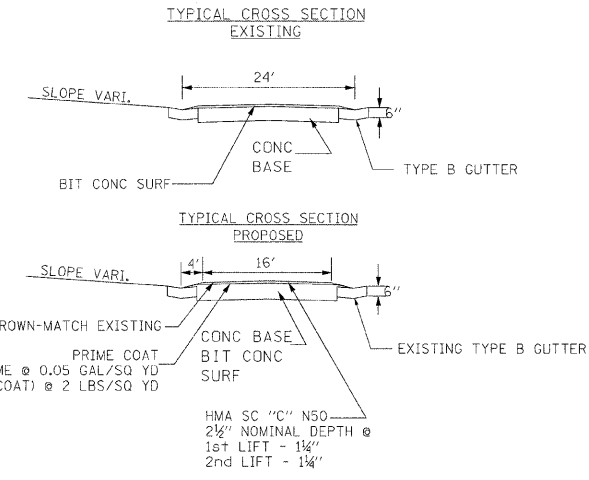
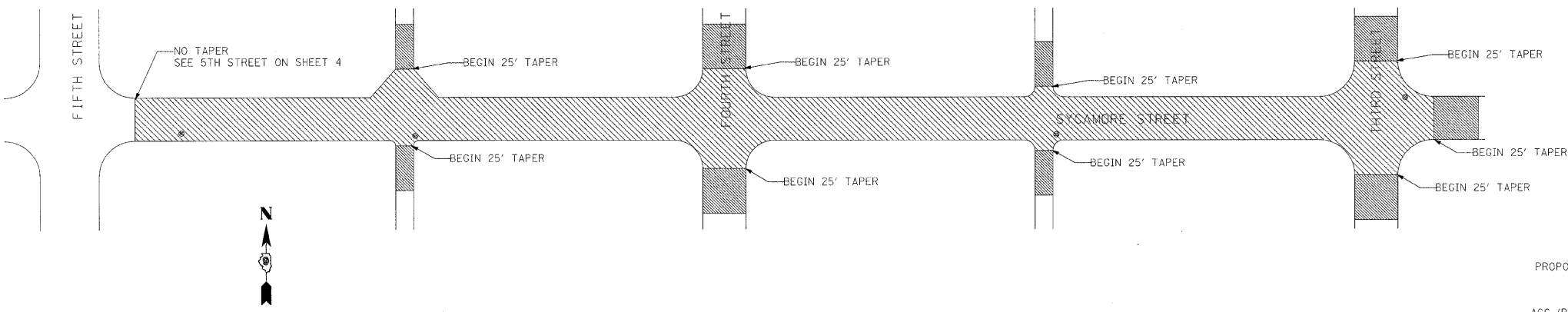


PROFESSIONAL DESIGN FIRM  
LAND SURVEY & PROFESSIONAL ENGINEERING CORPORATION  
184-000887  
(62-032435)(35-002769)

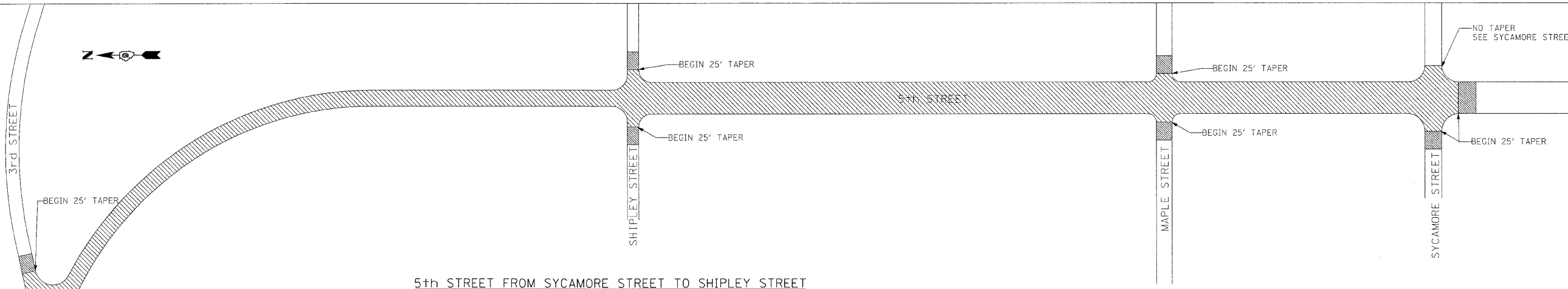
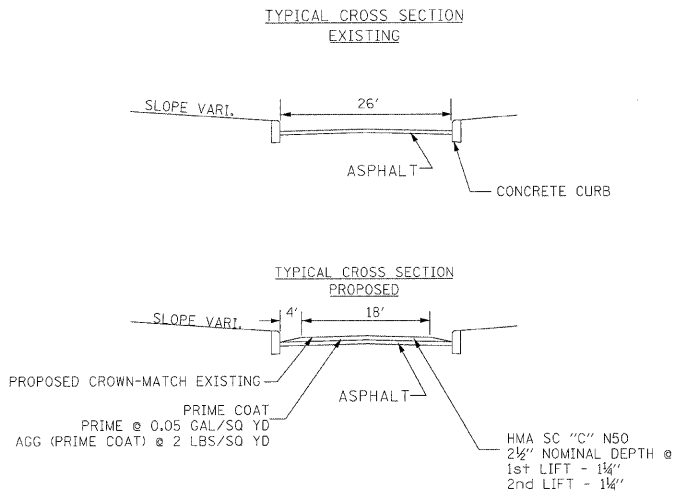
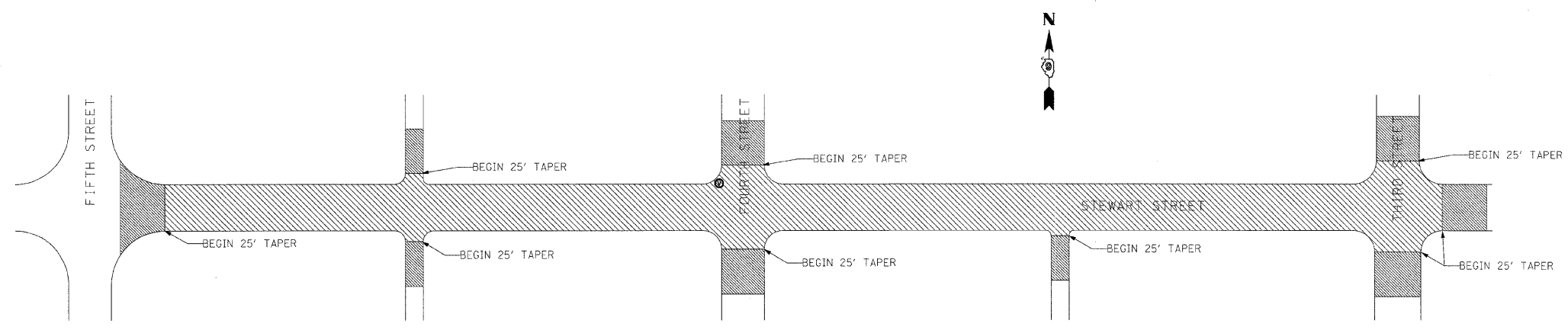


AARON M. MEFFORD  
NAME  
*Aaron Mefford*  
SIGNATURE  
7-16-09  
DATE  
11-30-09  
EXPIRES

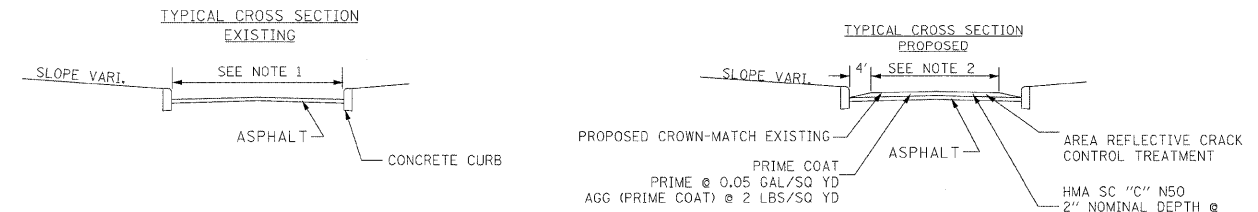
SYCAMORE FROM THIRD TO FIFTH ST



STEWART STREET FROM THIRD TO FIFTH ST



5th STREET FROM SYCAMORE STREET TO SHIPLEY STREET



- NOTES:
- 36' WIDE IN TAPER SOUTH OF SYCAMORE ST. AND 44.1' WIDE FROM SYCAMORE NORTH TO SHIPLEY ST.
  - 28' WIDE IN TAPER SOUTH OF SYCAMORE ST. AND 36.1' WIDE FROM SYCAMORE NORTH TO SHIPLEY ST.

5th STREET FROM SHIPLEY STREET TO 3RD STREET

