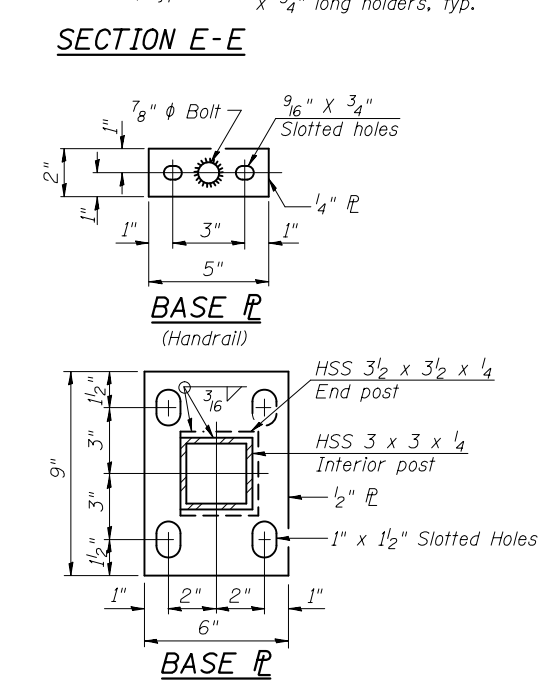
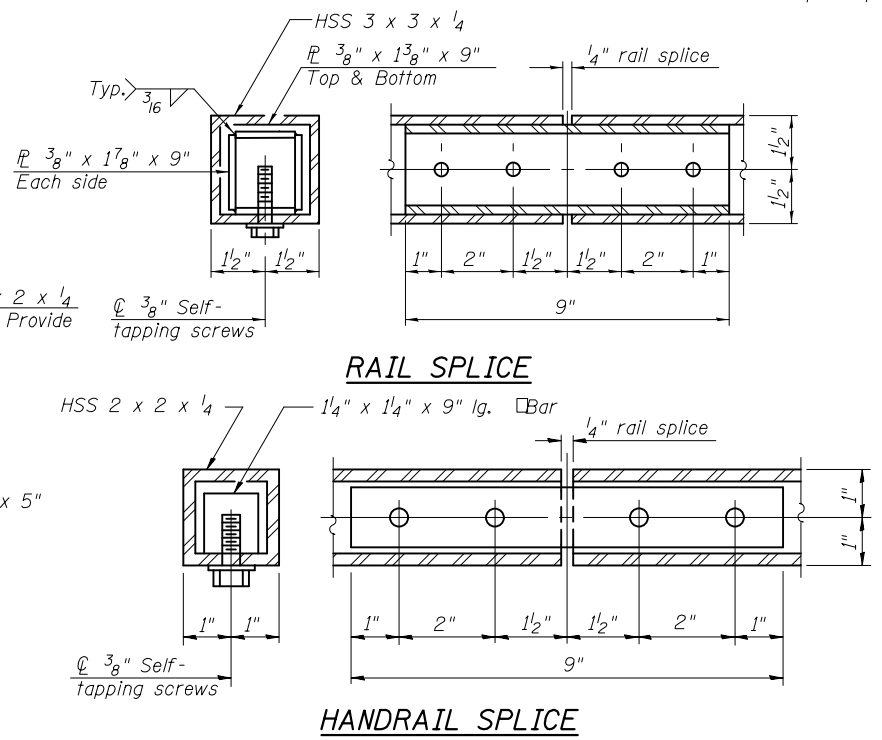
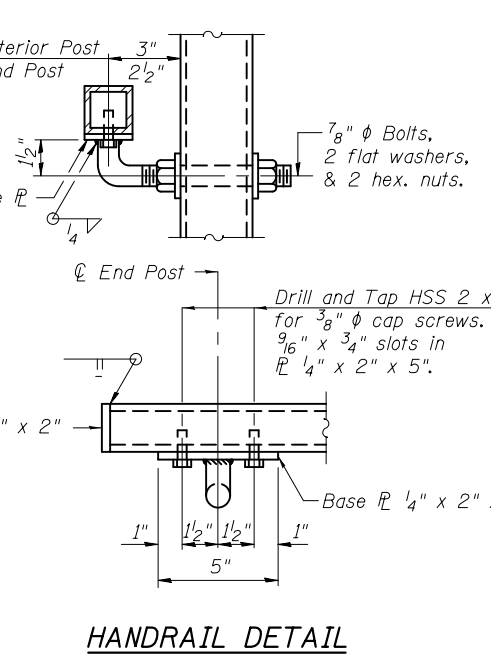
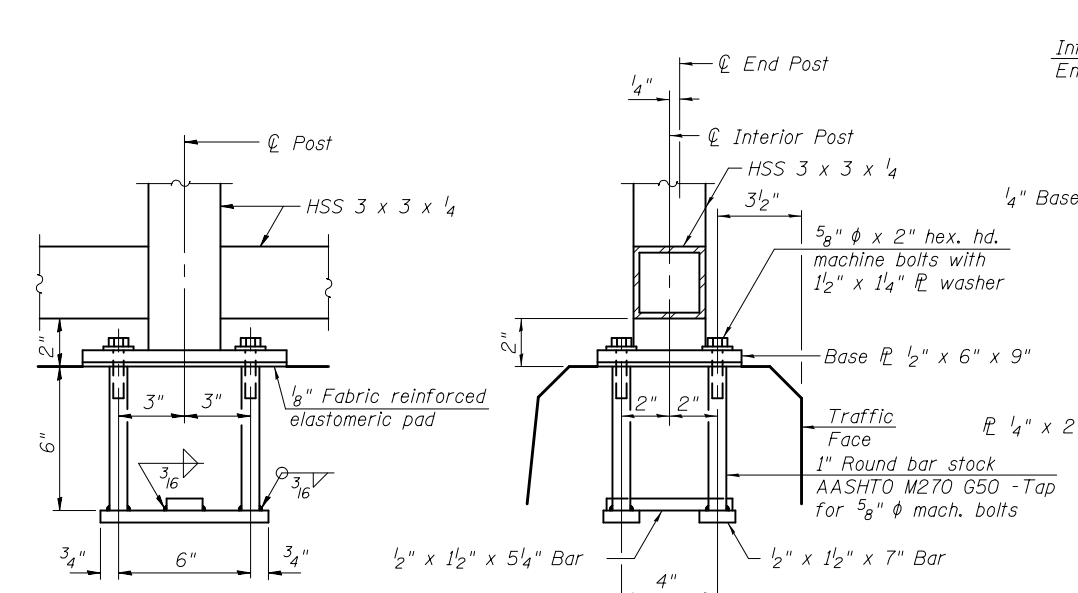
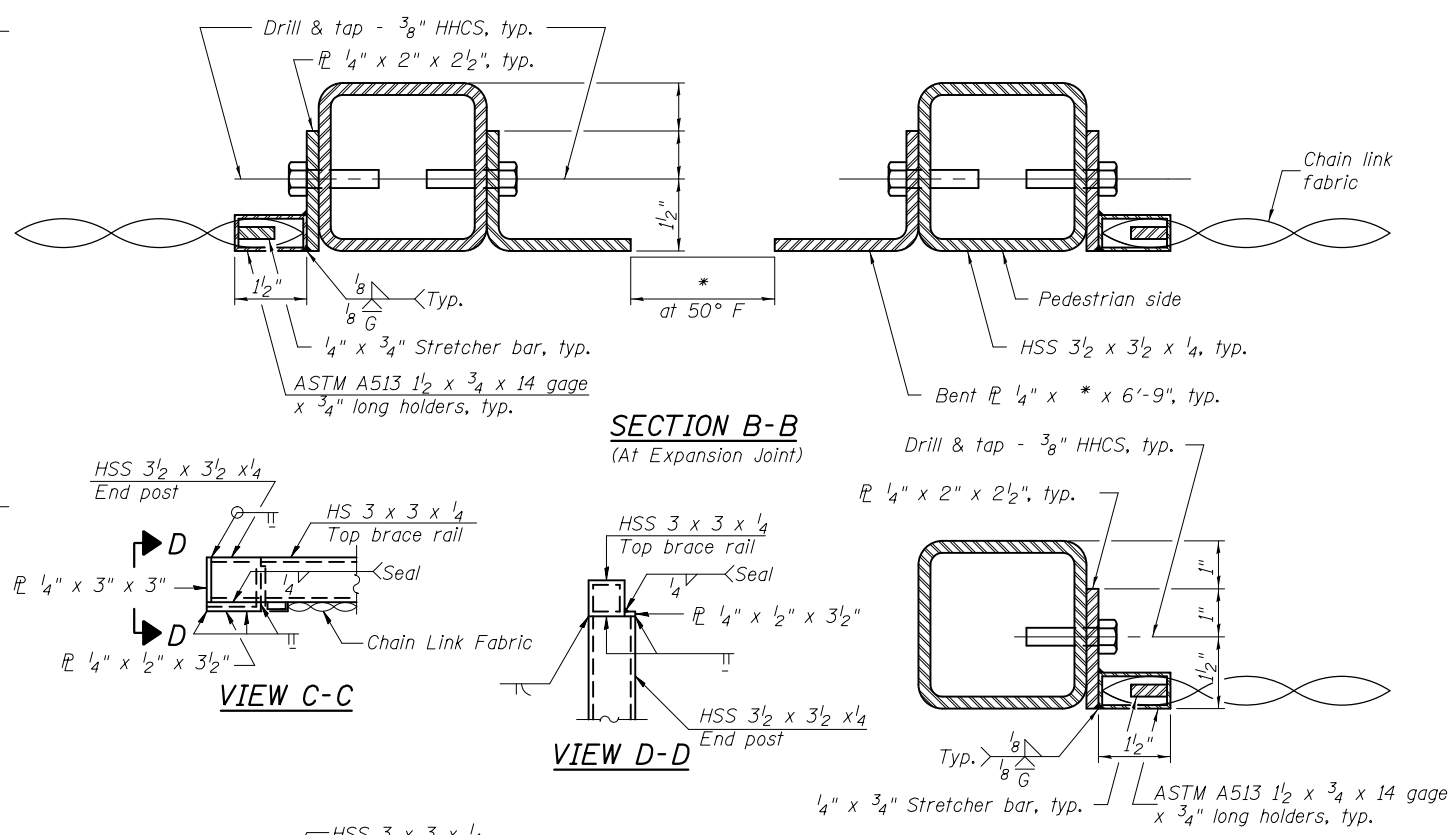
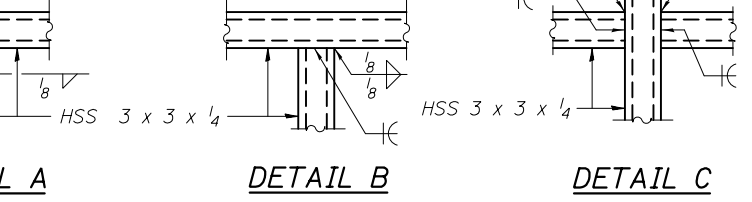
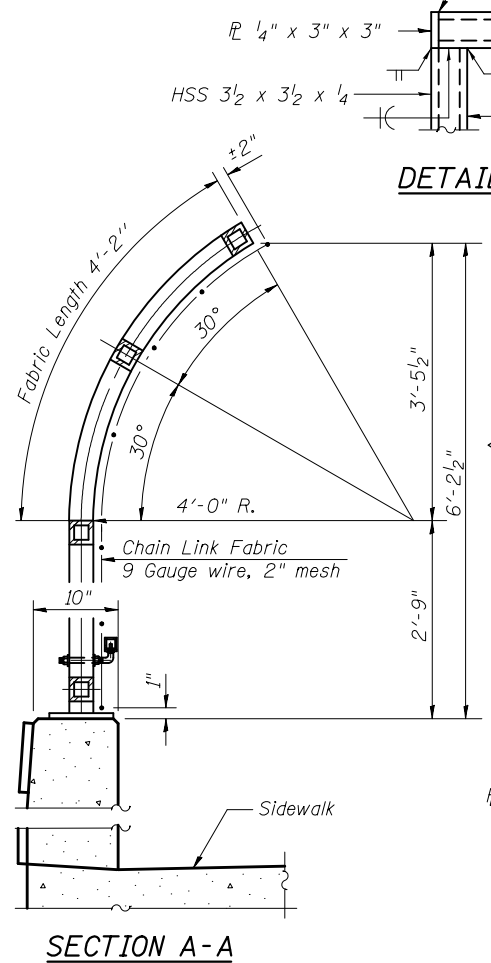
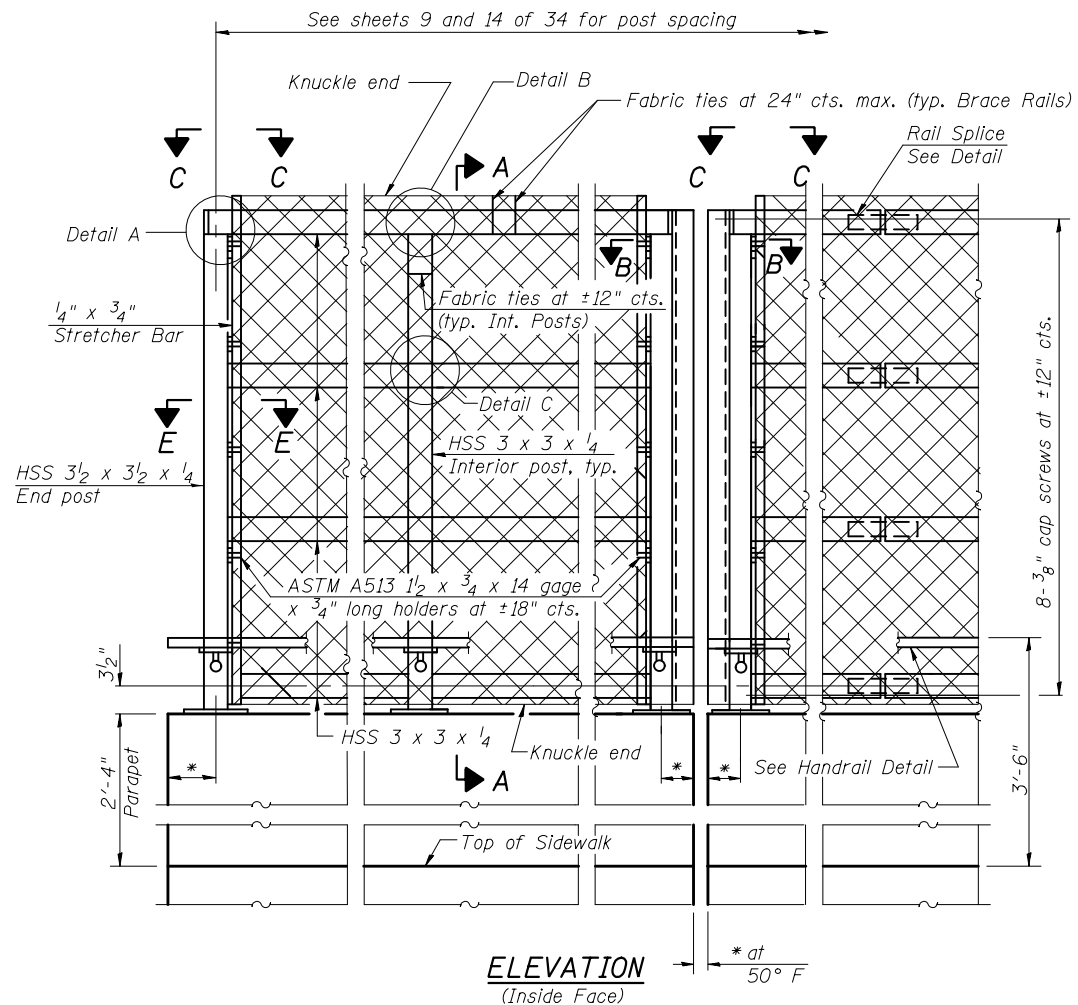


All steel rail elements shall be galvanized according to Article 509.05 of the Standard Specifications.
 All steel rail elements shall be finished with Black Polyester Powder Coating over galvanized steel. See Special Provisions.
 CVN testing may be omitted for the Bridge Fence Railing.

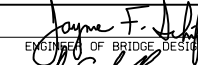



ANCHOR BOLT DETAILS
 In lieu of the cast-in-place anchor device shown, the Contractor has the option of drilling and setting 5/8" φ anchor rods according to Article 509.06 of the Standard Specifications. Embedment shall be according to the manufacturer's specifications.

*Variable - See Plans
 (10'-0" Maximum Post Spacing)

9/10/2020 11:36:27 AM

DESIGNED - NICHOLAS R. BARNETT	EXAMINED
CHECKED - PAUL GURKLYS/CORY KOLTVEIT	PASSED
DRAWN - MICHAEL B. MOSSMAN	
CHECKED - PG / CDK / GRA	


 ENGINEER OF BRIDGE DESIGN

 ENGINEER OF BRIDGES AND STRUCTURES

DATE - AUGUST 6, 2020
REVISED 3/ 9/10/2020 G.R.A.
REVISED

**STATE OF ILLINOIS
 DEPARTMENT OF TRANSPORTATION**

**BRIDGE FENCE RAILING, PARAPET MOUNTED
 STRUCTURE NO. 101 - 0188**

SHEET NO. 18 OF 34 SHEETS

F.A.P. RTE. 301	SECTION 4HBR	COUNTY WINNEBAGO	TOTAL SHEETS 148	SHEET NO. 83
CONTRACT NO. 64A08			ILLINOIS FED. AID PROJECT	

BILL OF MATERIAL

Item	Unit	Quantity
Bridge Fence Railing	Foot	270