

STATE OF ILLINOIS
DEPARTMENT OF TRANSPORTATION

F.A.P. RTE.	SECTION	COUNTY	TOTAL SHEETS	SHEET NO.
310	(56,57)RS-4	GREENE/JERSEY	12	1
		ILLINOIS	CONTRACT NO. 76L20	

D-98-028-18



FOR INDEX OF SHEETS, SEE SHEET NO. 2

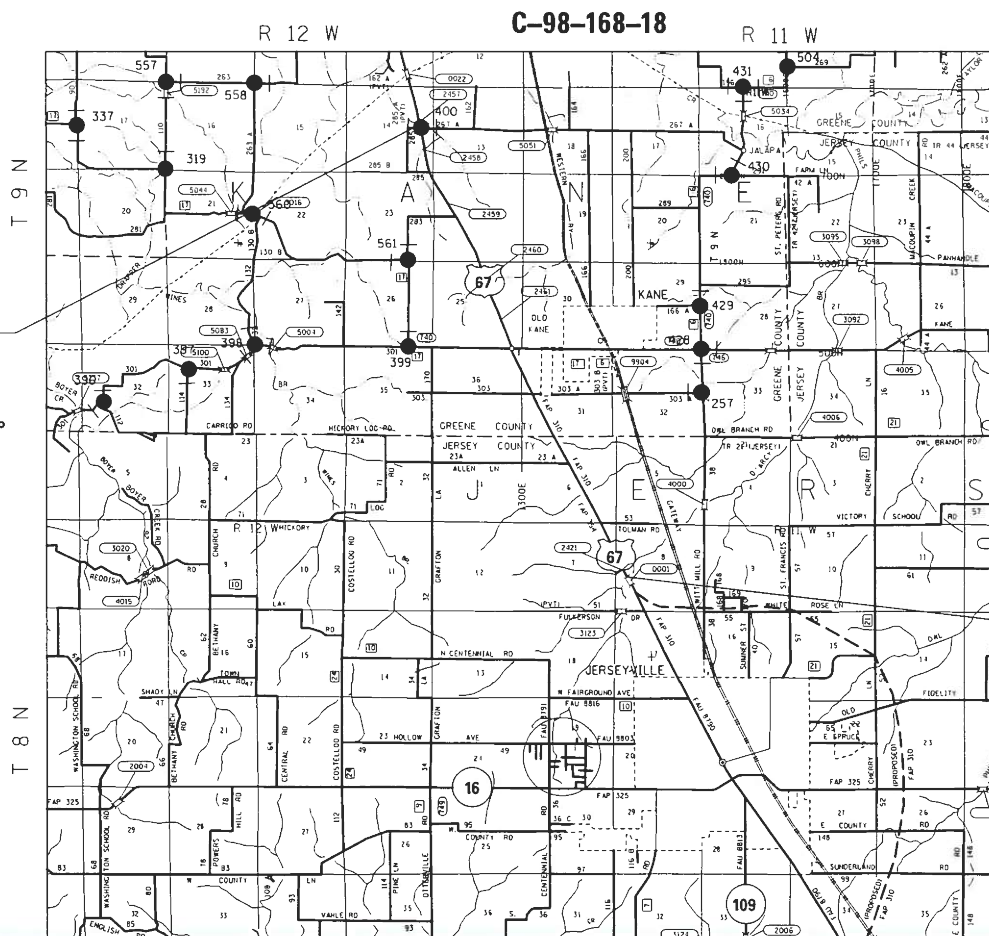
GREENE COUNTY	TRAFFIC DATA
LOCATION	US 67
2019 ADT	5100 (ACTUAL)
2029 ADT	6000 (ESTIMATED)
MU%	7.9
SU%	5.0

JERSEY COUNTY	TRAFFIC DATA
LOCATION	US 67
2019 ADT	5900 (ACTUAL)
2029 ADT	6900 (ESTIMATED)
MU%	6.0
SU%	2.8

FUNCTIONAL CLASSIFICATION: OTHER ARTERIAL

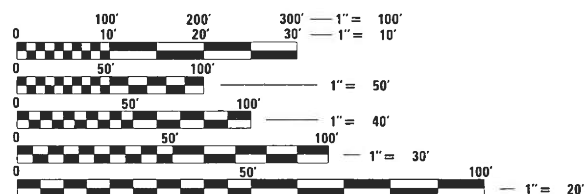
PROPOSED HIGHWAY PLANS

FAP ROUTE 310 (US 67)
SECTION (56,57)RS-4
PROJECT NHPP-DOOP(337)
STANDARD OVERLAY PROJECT
GREENE, JERSEY COUNTIES



BEGIN PROJECT
(EXISTING JOINT)
STA. 349+00
LAT: 39.226878°
LONG: -90.392239°

END PROJECT
(EXISTING JOINT)
STA. 654+45 (S.N. 041-0001)
LAT: 39.150767°
LONG: -90.347947°

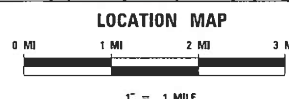


FULL SIZE PLANS HAVE BEEN PREPARED USING STANDARD ENGINEERING SCALES. REDUCED SIZED PLANS WILL NOT CONFORM TO STANDARD SCALES. IN MAKING MEASUREMENTS ON REDUCED PLANS, THE ABOVE SCALES MAY BE USED.

J.U.L.I.E.
JOINT UTILITY LOCATION INFORMATION FOR EXCAVATION
1-800-892-0123
OR 811

PROJECT ENGINEER: TIM PADGETT (618) 346-3325
PROJECT MANAGER: RAHSHUN MILLER (618) 346-3196

CONTRACT NO. 76L20



GROSS LENGTH = 30,545 FT. = 5.79 MILE
NET LENGTH = 30,545 FT. = 5.79 MILE

STATE OF ILLINOIS
DEPARTMENT OF TRANSPORTATION

SUBMITTED *June 10, 2020*
Keith Roberts
REGIONAL ENGINEER

August 14, 2020
Scott A. Elk
ENGINEER OF DESIGN AND ENVIRONMENT

August 14, 2020
German J. Gu
DIRECTOR OF HIGHWAYS PROJECT IMPLEMENTATION

PRINTED BY THE AUTHORITY
OF THE STATE OF ILLINOIS

INDEX OF SHEETS

1	COVER
2	INDEX OF SHEETS, STANDARDS, GENERAL NOTES & COMMITMENTS
3-4	SUMMARY OF QUANTITIES
5-6	TYPICAL SECTIONS
7-9	SCHEDULES OF QUANTITIES
10	LOCATION MAP
11	DETAILS SHEET
12	EROSION CONTROL DETAILS (SWPPP)

STANDARDS

000001-07	STANDARD SYMBOLS, ABBREVIATIONS AND PATTERNS
001006	DECIMAL OF AN INCH AND OF A FOOT
420001-09	PAVEMENT JOINTS
442201-03	CLASS C & D PATCHES
482011-03	HMA SHOULDER, STRIPS/SHOULDER, WITH RESURFACING OR WIDENING AND RESURFACING PROJECTS
642006	SHOULDER RUMBLE STRIPS 8 INCH
701201-05	LANE CLOSURE, 2L, 2W, DAY ONLY, FOR SPEEDS ≥ 45 MPH
701301-04	LANE CLOSURE, 2L, 2W SHORT TERM OPERATIONS
701306-04	LANE CLOSURE, 2L, 2W, SLOW MOVING OPERATIONS DAY ONLY, FOR SPEEDS ± 45 MPH
701311-03	LANE CLOSURE, 2L, 2W, MOVING OPERATIONS - DAY ONLY
701326-04	LANE CLOSURE, 2L, 2W PAVEMENT WIDENING, FOR SPEEDS ≥ 45 MPH
701336-07	LANE CLOSURE, 2L, 2W WORK AREAS IN SERIES, FOR SPEEDS ≥ 45 MPH
701901-08	TRAFFIC CONTROL DEVICES
780001-05	TYPICAL PAVEMENT MARKINGS
781001-04	TYPICAL APPLICATIONS RAISED REFLECTIVE PAVEMENT MARKERS

GENERAL NOTES

1. UTILITIES KNOWN TO HAVE FACILITIES WITHIN THE PROJECT AREA ARE AS FOLLOWS:

UTILITY	TYPE	ABOVE GROUND	BELOW GROUND
*AMEREN ILLINOIS	GAS, ELECTRIC	X	X
*FRONTIER COMMUNICATIONS	COMMUNICATIONS	X	X
*GRAFTON TELEPHONE COMPANY	COMMUNICATIONS	X	X
*GREENE COUNTY RURAL WATER DISTRICT	WATER		X
*ILLINOIS RURAL ELECTRIC COOPERATIVE	ELECTRIC	X	X
*JERSEY COUNTY RURAL WATER COMPANY	WATER		X
*VILLAGE OF KANE	WATER		X
*NEWWAVE COMMUNICATIONS	CABLE TV	X	X

MEMBERS OF J.U.L.I.E. (800-892-0123 OR 811) ARE INDICATED BY AN *. NON-JULIE MEMBERS MUST BE NOTIFIED INDIVIDUALLY.

- THE CONTRACTOR AND THE ENGINEER SHALL BE AWARE THAT NO SURVEY WAS PERFORMED FOR THIS PROJECT, THE STATIONING, TOPOGRAPHY AND QUANTITIES SHOWN ON THESE PLANS WERE CREATED USING MICROFILM AND FIELD MEASUREMENTS. ALL SHALL BE ASSUMED TO BE APPROXIMATE. THE CONTRACTOR SHALL VERIFY DIMENSIONS AND CONDITIONS IN THE FIELD PRIOR TO CONSTRUCTION AND ORDERING OF MATERIALS.
- PROPOSED PAVEMENT MARKING SHALL MATCH THE LOCATION OF THE EXISTING PAVEMENT MARKINGS AS DIRECTED BY THE ENGINEER.
- NO OVERNIGHT LANE CLOSURES WILL BE PERMITTED.
- AN ESTIMATED QUANTITY OF 81,453 TONS OF CUTTINGS FROM THE HOT-MIX ASPHALT SURFACE REMOVAL OPERATION IS ANTICIPATED. WIDTHS AS MEASURED IN THE FIELD.
- SHORT TERM PAVEMENT MARKING SHALL BE APPLIED TO MILLED, PRIMED SURFACE AND FINAL SURFACE. ONLY REMOVAL FROM FINAL SURFACE SHALL BE PAID FOR AS SHORT TERM PAVEMENT MARKING REMOVAL.
- "ROAD CONSTRUCTION AHEAD" SIGNS SHALL BE PLACED AT EACH END OF THE PROJECT PLUS THE INTERSECTING SIDE ROADS, AND WILL BE CONSIDERED INCLUDED IN THE TRAFFIC CONTROL PAY ITEMS. ALL CONSTRUCTION SIGNS SHALL BE 48"X 48" FLUORESCENT ORANGE.

- THE THICKNESS OF THE HMA MIXTURE SHOWN ON THE PLANS IS THE NOMINAL THICKNESS. DEVIATIONS FROM THE NOMINAL THICKNESS WILL BE PERMITTED WHEN SUCH DEVIATIONS OCCUR DUE TO IRREGULARITIES IN THE EXISTING SURFACE OR BASE ON WHICH THE HMA MIXTURE IS PLACED.
- IF THE SURFACE REMOVAL ON THIS PROJECT PRODUCES A MILLED EDGE NEAR CENTERLINE GREATER THAN 1.5 INCHES BETWEEN ADJACENT OPEN LANES OF TRAFFIC, ONE OF THE FOLLOWING SHALL APPLY:
 - * THE CONTRACTOR SHALL ORGANIZE THE WORK TO AVOID THE MILLED EDGE.
 - * THE CONTRACTOR SHALL CONSTRUCT A TEMPORARY HOT MIX ASPHALT WEDGE ALONG THE MILLED EDGE.
 - * THE CONTRACTOR SHALL CONSTRUCT A MILLED SLOPED EDGE (MINIMUM 1:3) ALONG THE MILLED EDGE.
 THE COST OF THIS WORK SHALL BE INCLUDED IN THE COST PER SQUARE YARD FOR HOT-MIX ASPHALT SURFACE REMOVAL OF THE DEPTH SPECIFIED.
- AN EMPTIED MATERIAL TRANSFER DEVICE IS ALLOWED OVER CULVERTS 031-2458; 031-2459; 031-2460; 031-2461; 042-2421; AND S.N. 042-0001.
- THE 4' HMA SHOULDERS ARE TO BE CONSTRUCTED WITHOUT REMOVING ANY GUARDRAIL.
- ALL MILLED AREAS SHALL BE RESURFACED WITH THE APPROPRIATE SURFACE COURSE PRIOR TO OPENING THE LANE(S) TO TRAFFIC TO ALLEVIATE ANY DROP OFFS BETWEEN ADJACENT SURFACES OF MORE THAN 2".
- ALL PATCHING ON THIS PROJECT SHALL BE COMPLETED PRIOR TO BITUMINOUS SURFACE REMOVAL.

COMMITMENTS

NONE

MIXTURE REQUIREMENTS

ADT (CONSTRUCTION YR):	5800
MU%	7.9
SU%	5
20 YR. ESAL'S:	2.72

MIXTURE USE	SURFACE	BINDER	PATCHING
AC/PG	PG 64-22	PG 64-22	PG 64-22
RAP % (MAX)	SEE SPECIAL PROVISION	SEE SPECIAL PROVISION	SEE SPECIAL PROVISION
DESIGN AIR VOIDS	4.0% @ Ndes=70	4.0% @ Ndes=70	4.0% @ Ndes=70
MIX COMPOSITION (GRADATION MIXTURE)	IL 9.5	IL 9.5 FG	IL 19.0
FRICTION AGG	MIXTURE "D"	MIXTURE "C"	MIXTURE "B"
QUALITY MGMT PROGRAM	QCP	QCP	QC/QA

MIXTURE USE	SHOULDERS > 2.25"	SHOULDERS < 2.25"
AC/PG	PG 64-22	PG 64-22
RAP % (MAX)	SEE SPECIAL PROVISION	SEE SPECIAL PROVISION
DESIGN AIR VOIDS	4.0% @ Ndes=30	4.0% @ Ndes=30
MIX COMPOSITION (GRADATION MIXTURE)	IL 19.0L	IL 9.5L
FRICTION AGG		
QUALITY MGMT PROGRAM	QC/QA	QC/QA

PLAN QUANTITIES FOR BITUMINOUS CONCRETE SURFACE COURSE ITEMS ARE CALCULATED USING A UNIT WEIGHT OF 112 LB/SQ YD/IN (59.8 KG/SQ M/25 MM THICKNESS).

STATE OF ILLINOIS DEPARTMENT OF TRANSPORTATION

INDEX OF SHEETS, STANDARDS GENERAL NOTES & COMMITMENTS

SCALE: NTS SHEET 1 OF 1 SHEETS STA. TO STA.

F.A.P. RTE.	SECTION	COUNTY	TOTAL SHEETS	SHEET NO.
310	(56,57)RS-4	GREENE/JERSEY	12	2
CONTRACT NO. 76L20				
ILLINOIS		FED. AID PROJECT		

MODEL: Default
 FILE: Main1.dwg
 PLOT: P:\p1\p1room.dwg
 ILLINOIS.GOV:PWIDOT\Documents\DOT_Offices\District 8\Projects\076L20\CADData\CADsheets\076L20-ph-500.dgn

CODE NO.	ITEM	UNIT	TOTAL QUANTITY	CONSTRUCTION CODE		
				80% FED 20% STATE	GREENE	JERSEY
					ROADWAY	ROADWAY
					0005	0005
				RURAL	RURAL	
44200215	PAVEMENT PATCHING, TYPE IV, 19 INCH	SQ YD	173		0	173
20200600	EXCAVATING AND GRADING EXISTING SHOULDER	UNIT	595	411		184
40600290	BITUMINOUS MATERIALS (TACK COAT)	POUND	54981	38016		16965
40600990	TEMPORARY RAMP	SQ YD	577	455		122
40602985	HOT-MIX ASPHALT BINDER COURSE, IL-9.5, N70	TON	5702	3943		1759
40604012	HOT-MIX ASPHALT SURFACE COURSE, IL-9.5FG, MIX "D", N70	TON	6842	4731		2111
40700100	BITUMINOUS MATERIALS (TACK COAT)	POUND	4173	2931.5		1241.5
44000160	HOT-MIX ASPHALT SURFACE REMOVAL, 2 3/4"	SQ YD	81453	56320		25133
44000500	COMBINATION CURB AND GUTTER REMOVAL	FOOT	306	252		54
44004250	PAVED SHOULDER REMOVAL	SQ YD	6607	4556		2051
48102100	AGGREGATE WEDGE SHOULDER, TYPE B	TON	1590	1103		487
48203029	HOT-MIX ASPHALT SHOULDERS, 8"	SQ YD	26514	18263.5		8250.5
64200108	SHOULDER RUMBLE STRIPS, 8 INCH	FOOT	59464	40806		18658
67000400	ENGINEER'S FIELD OFFICE, TYPE A	CAL MO	3	2		1

REV. - MS

USER NAME = millerraj	DESIGNED -	REVISED -
	DRAWN -	REVISED -
PLOT SCALE = 100.0000 ' / in.	CHECKED -	REVISED -
PLOT DATE = 3/10/2020	DATE -	REVISED -

**STATE OF ILLINOIS
DEPARTMENT OF TRANSPORTATION**

SUMMARY OF QUANTITIES

SCALE: NTS SHEET 1 OF 2 SHEETS STA. TO STA.

F.A.P. RTE.	SECTION	COUNTY	TOTAL SHEETS	SHEET NO.
310	(56.57)RS-4	GREENE/JERSEY	12	3
			CONTRACT NO. 76L20	
ILLINOIS FED. AID PROJECT				

MODEL: Default
 FILE: \\nrcs-pkgs\planroom\dat\illinois.gov\PWIDOT\Documents\DOT_Offices\District 8\Projects\0876L20\CADD\Drawings\CAD\Sheets\0876L20-ph-500.dgn

CODE NO.	ITEM	UNIT	TOTAL QUANTITY	CONSTRUCTION CODE	
				80% FED 20% STATE	
				GREENE	JERSEY
				ROADWAY	ROADWAY
				0005	0005
				RURAL	RURAL
67100100	MOBILIZATION	L SUM	1	0.6	0.4
70100450	TRAFFIC CONTROL AND PROTECTION, STANDARD 701201	L SUM	1	0.6	0.4
70100460	TRAFFIC CONTROL AND PROTECTION, STANDARD 701306	L SUM	1	0.6	0.4
70100500	TRAFFIC CONTROL AND PROTECTION, STANDARD 701326	L SUM	1	0.6	0.4
70100600	TRAFFIC CONTROL AND PROTECTION, STANDARD 701336	L SUM	1	0.6	0.4
70103815	TRAFFIC CONTROL SURVEILLANCE	CAL DA	7	4	3
70300100	SHORT TERM PAVEMENT MARKING	FOOT	8921	6194	2727
70300150	SHORT TERM PAVEMENT MARKING REMOVAL	SQ FT	991	688	303
70300220	TEMPORARY PAVEMENT MARKING - LINE 4"	FOOT	82442	58209	24233
* 78000200	THERMOPLASTIC PAVEMENT MARKING - LINE 4"	FOOT	82442	58209	24233
* 78100100	RAISED REFLECTIVE PAVEMENT MARKER	EACH	382	264	118
78300200	RAISED REFLECTIVE PAVEMENT MARKER REMOVAL	EACH	382	264	118
X7030005	TEMPORARY PAVEMENT MARKING REMOVAL	SQ FT	27736	19531	8205
Ø Z0076600	TRAINEES	HOUR	1500	1500	
Z0033700	LONGITUDINAL JOINT SEALANT	FOOT	30545	21120	9425
Ø Z0076604	TRAINEES TRAINING PROGRAM GRADUATE	HOUR	1500	1500	

Ø 0042
 * SPECIALTY ITEM

REV. - MS

USER NAME = millerraj	DESIGNED -	REVISED -
	DRAWN -	REVISED -
PLOT SCALE = 100.0000' / in.	CHECKED -	REVISED -
PLOT DATE = 3/10/2020	DATE -	REVISED -

**STATE OF ILLINOIS
 DEPARTMENT OF TRANSPORTATION**

SUMMARY OF QUANTITIES

SCALE: NTS SHEET 2 OF 2 SHEETS STA. TO STA.

F.A.P. RTE.	SECTION	COUNTY	TOTAL SHEETS	SHEET NO.
310	(56,57)RS-4	GREENE/JERSEY	12	4
CONTRACT NO. 76L20				
ILLINOIS		FED. AID PROJECT		

MODEL: Default
 FILE: \\nrcr-pc1\pub\room\dat\illinois.gov\PWIDOT\Documents\DOT_Offices\District 8\Projects\0876L20\CADD\data\CAD\Sheets\0876L20-ph-500.dgn

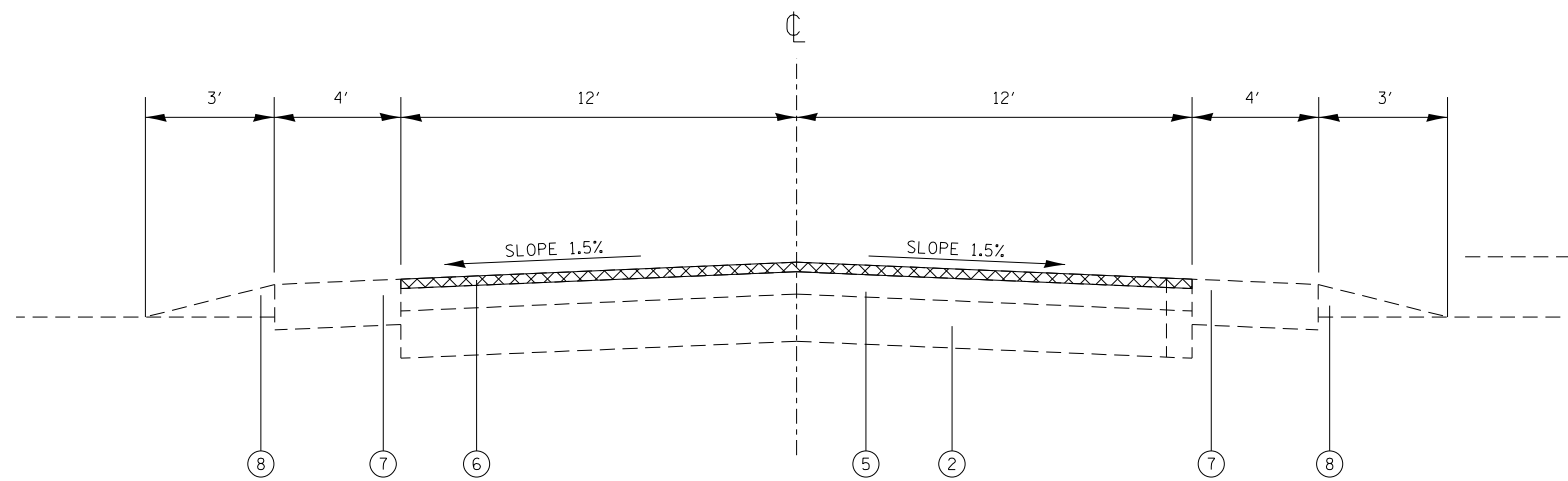
CODE NO.	ITEM	UNIT	TOTAL QUANTITY	CONSTRUCTION CODE	
				GREENE	JERSEY
				ROADWAY	ROADWAY
				0005	0005
				RURAL	RURAL
Z0034105	MATERIAL TRANSFER DEVICE	TON	12544	8673	3871

USER NAME = millerraj	DESIGNED -	REVISED -
	DRAWN -	REVISED -
PLOT SCALE = 100.0000' / in.	CHECKED -	REVISED -
PLOT DATE = 3/10/2020	DATE -	REVISED -

**STATE OF ILLINOIS
 DEPARTMENT OF TRANSPORTATION**

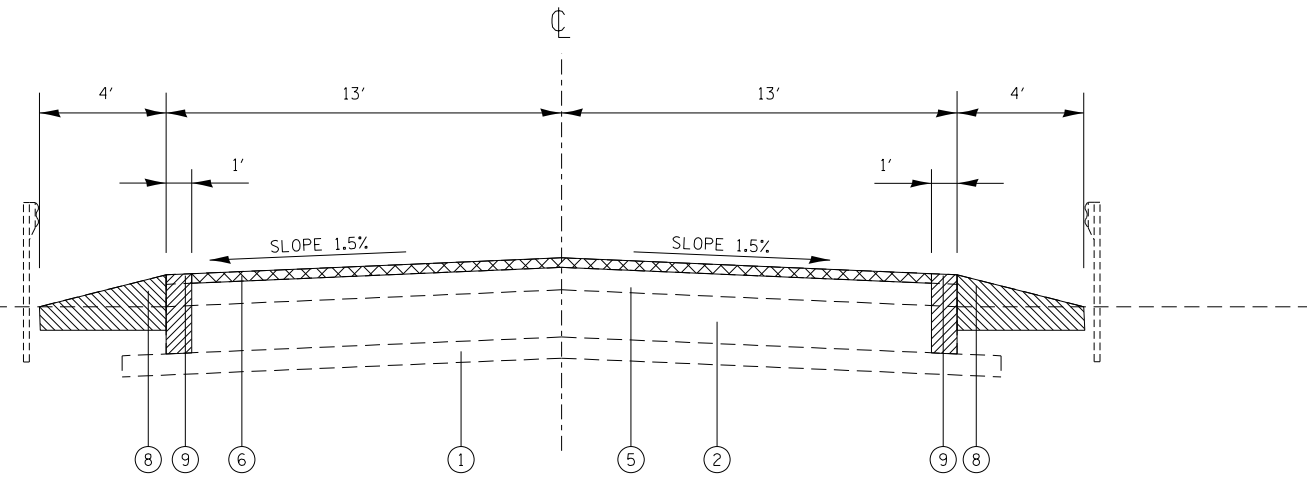
SUMMARY OF QUANTITIES			
SCALE: NTS	SHEET 2	OF 2 SHEETS	STA. TO STA.

F.A.P. RTE.	SECTION	COUNTY	TOTAL SHEETS	SHEET NO.
310	(56,57)RS-4	GREENE/JERSEY	12	5
CONTRACT NO. 76L20				
		ILLINOIS	FED. AID PROJECT	



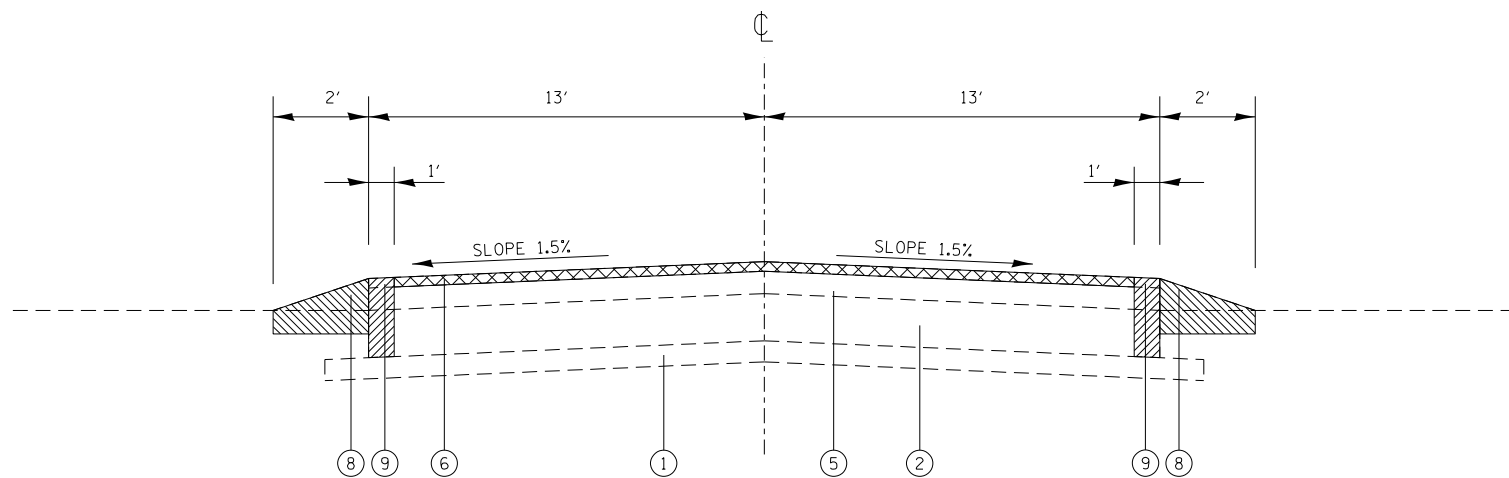
EXISTING TYPICAL SECTION

STA 349+00 TO STA 353+30



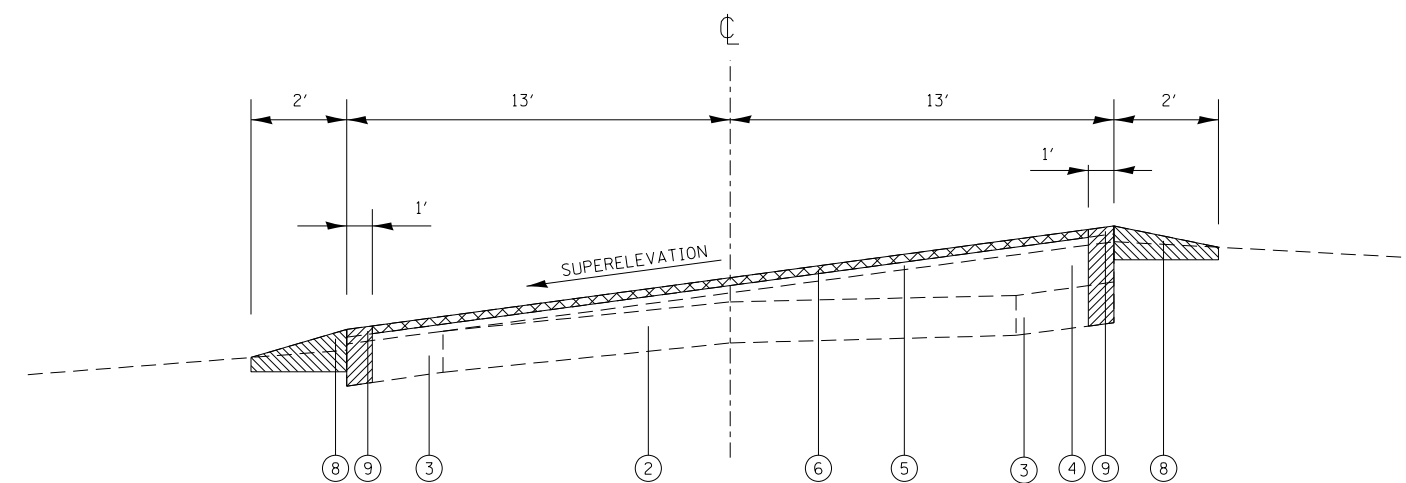
EXISTING TYPICAL SECTION

STA 363+55 TO STA 365+65



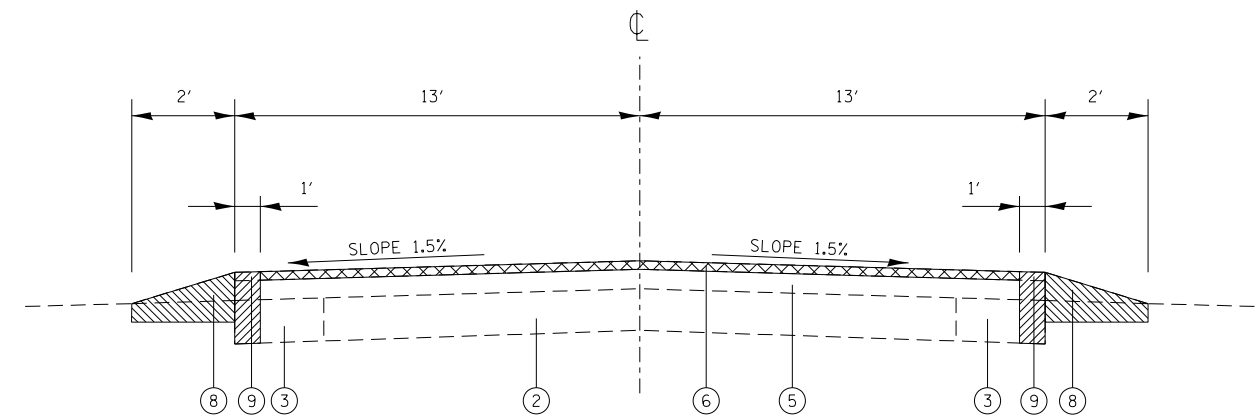
EXISTING TYPICAL SECTION

STA 353+30 TO STA 363+55
 STA 365+65 TO STA 361+53
 STA 483+00 TO STA 489+95
 STA 588+00 TO STA 600+00
 STA 642+75 TO STA 643+15



EXISTING SUPERELEVATION TYPICAL SECTION

STA 373+55 TO STA 384+45
 STA 419+88 TO STA 431+31

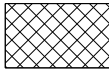
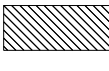



EXISTING TYPICAL SECTION

STA 361+53 TO STA 373+55 STA 489+95 TO STA 588+00
 STA 384+45 TO STA 419+88 STA 600+00 TO STA 642+75
 STA 431+31 TO STA 483+00 STA 643+15 TO STA 654+45

LEGEND

- ① EXISTING SUBBASE GRANULAR MATERIAL, TYPE A, 4"
- ② EXISTING P.C.C. BASE COURSE 9"
- ③ EXISTING P.C.C. BASE COURSE WIDENING 9"
- ④ EXISTING LEVELING BINDER (MM) 1 1/3"
- ⑤ EXISTING BIT. CONCRETE BINDER COURSE 1 2/3"
- ⑥ EXISTING BITUMINOUS CONCRETE SURFACE COURSE SUBCLASS I-11
- ⑦ EXISTING HMA SHOULDERS 8"
- ⑧ EXISTING GRAVEL OR CRUSHED STONE SHOULDER, TYPE B
- ⑨ EXISTING SAFTEY SHOULDER 1'
- ⑩ PROPOSED HMA BINDER COURSE IL-9.5FG, N70, 1 1/4"
- ⑪ PROPOSED BITUMINOUS MATERIALS (TACK COAT)
- ⑫ PROPOSED HOT-MIX ASPHALT SURFACE COURSE, MIX "D", N70, 1-1/2"
- ⑬ PROPOSED HOT-MIX ASPHALT SHOULDERS 8"
- ⑭ PROPOSED AGGREGATE WEDGE SHOULDER, TYPE B
- ⑮ PROPOSED LONGITUDINAL JOINT SEALANT

-  HMA SURFACE REMOVAL 2 3/4"
-  EXCAVATING AND GRADING EXISTING SHOULDER
-  PAVED SHOULDER REMOVAL

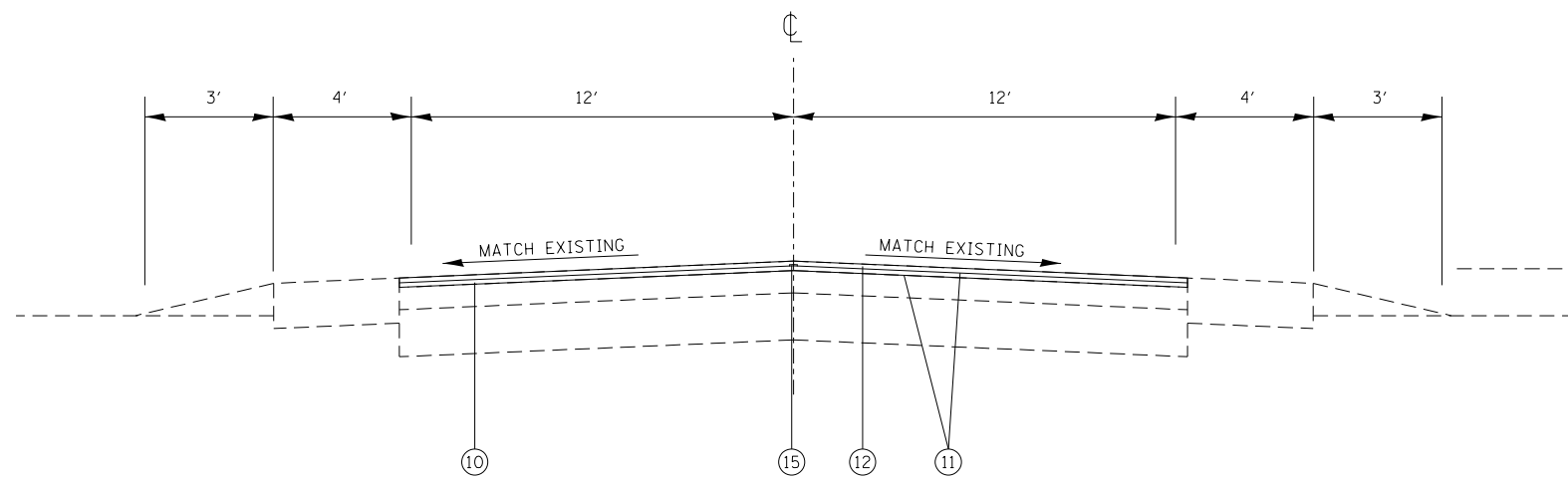
MODEL: Default
 FILE: Model2_Plan\p1ghamroom.dwg
 PROJECT: \p1ghamroom.dwg
 PLOT DATE: 3/10/2020
 PLOT SCALE: = 100.0000 ' / in.
 USER NAME: = millerraj
 DESIGNED: -
 DRAWN: -
 CHECKED: -
 DATE: -
 REVISED: -
 REVISED: -
 REVISED: -
 REVISED: -

**STATE OF ILLINOIS
 DEPARTMENT OF TRANSPORTATION**

TYPICAL SECTIONS

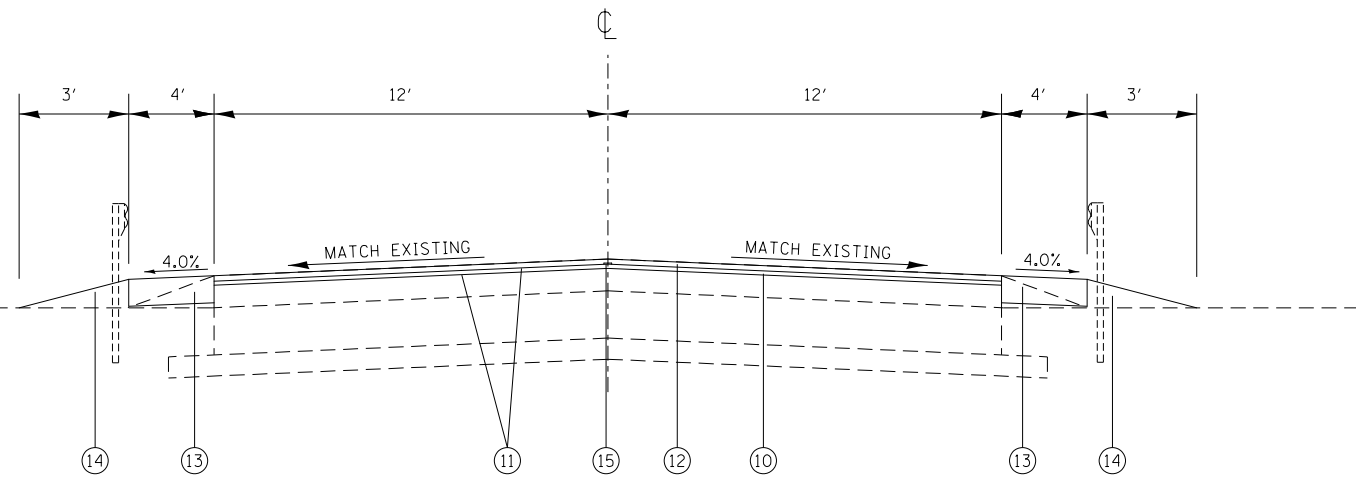
SCALE: NTS SHEET 1 OF 2 SHEETS STA. TO STA.

F.A.P. RTE.	SECTION	COUNTY	TOTAL SHEETS	SHEET NO.
310	(56,57)RS-4	GREENE/JERSEY	12	6
CONTRACT NO. 76L20				
ILLINOIS FED. AID PROJECT				



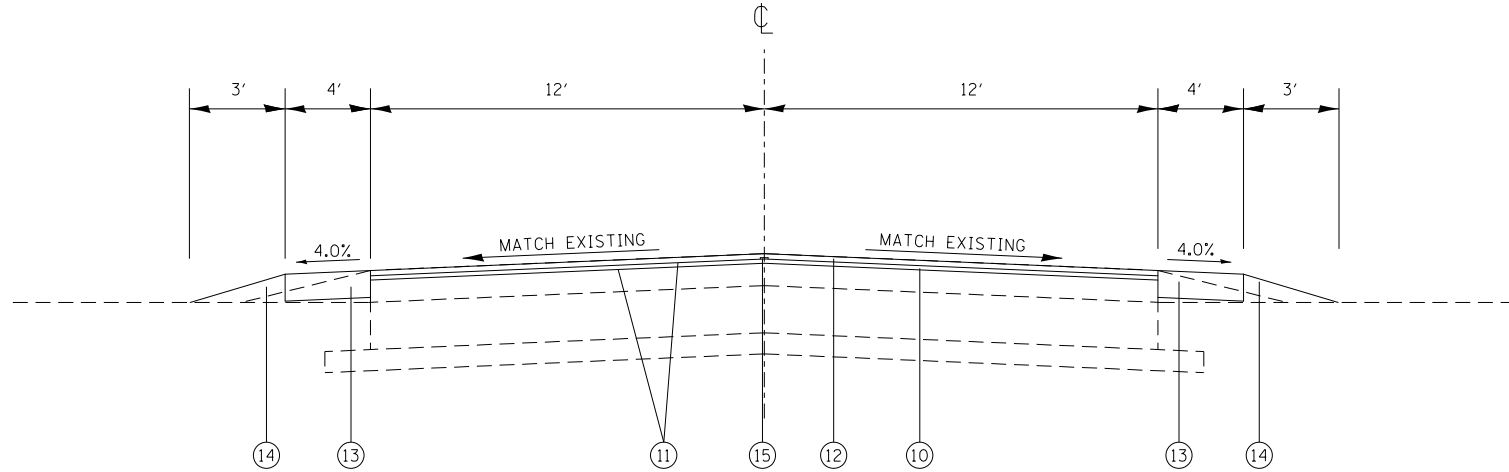
PROPOSED TYPICAL SECTION

STA 349+00 TO STA 353+30



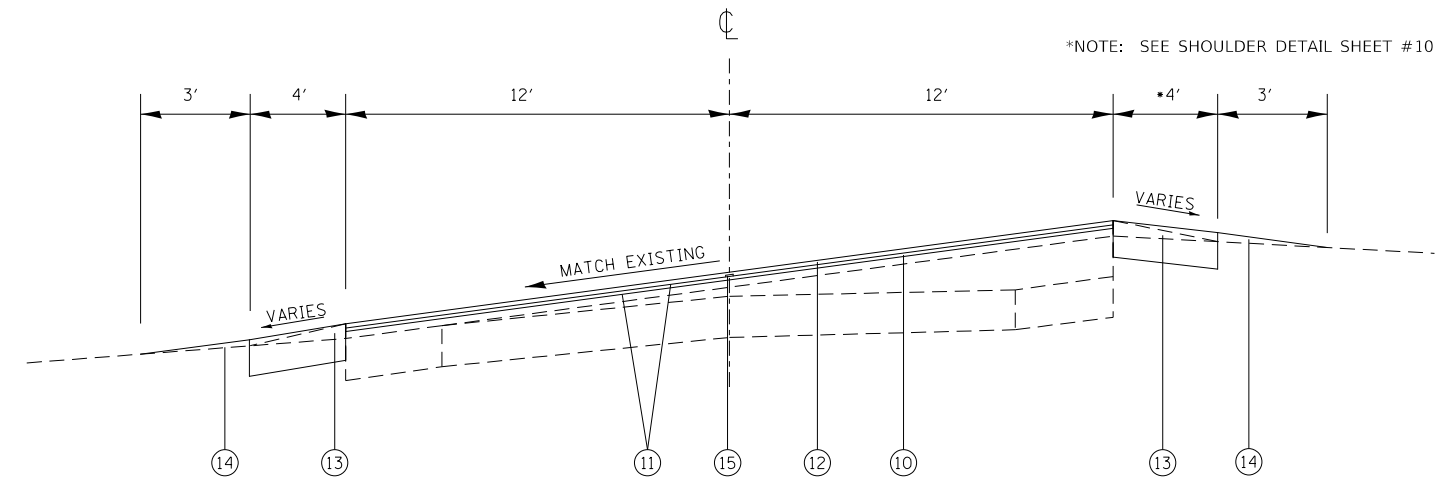
PROPOSED TYPICAL SECTION

STA 363+55 TO STA 365+65



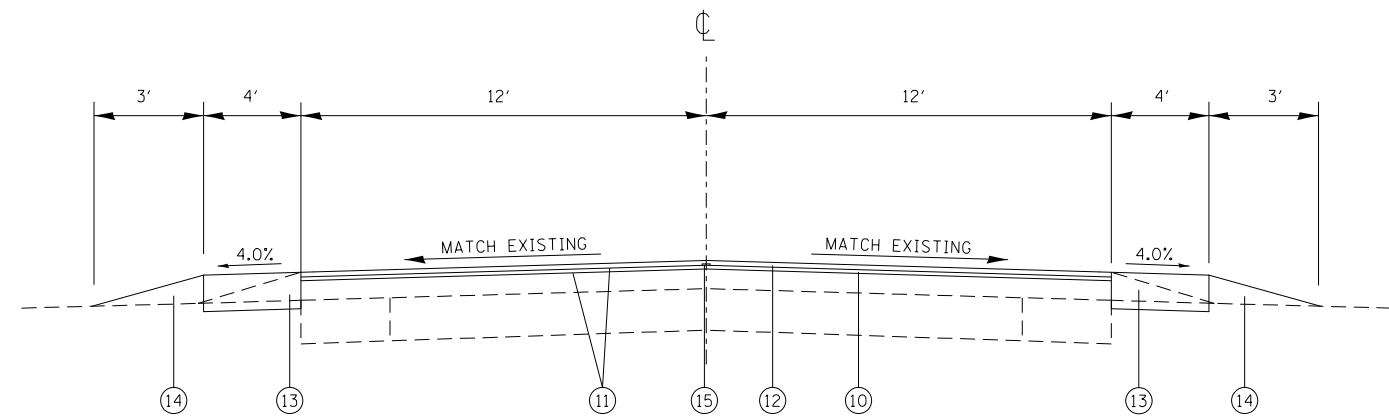
PROPOSED TYPICAL SECTION

STA 353+30 TO STA 363+55
 STA 365+65 TO STA 361+53
 STA 483+00 TO STA 489+95
 STA 588+00 TO STA 600+00
 STA 642+75 TO STA 643+15



PROPOSED SUPERELEVATION TYPICAL SECTION

STA 373+55 TO STA 384+45
 STA 419+88 TO STA 431+31



PROPOSED TYPICAL SECTION

STA 361+53 TO STA 373+55 STA 489+95 TO STA 588+00
 STA 384+45 TO STA 419+88 STA 600+00 TO STA 642+75
 STA 431+31 TO STA 483+00 STA 643+15 TO STA 654+45

LEGEND

- ① EXISTING SUBBASE GRANULAR MATERIAL, TYPE A, 4"
- ② EXISTING P.C.C. BASE COURSE 9"
- ③ EXISTING P.C.C. BASE COURSE WIDENING 9"
- ④ EXISTING LEVELING BINDER (MM) 1 1/3"
- ⑤ EXISTING BIT. CONCRETE BINDER COURSE 1 2/3"
- ⑥ EXISTING BITUMINOUS CONCRETE SURFACE COURSE SUBCLASS I-11
- ⑦ EXISTING HMA SHOULDERS 8"
- ⑧ EXISTING GRAVEL OR CRUSHED STONE SHOULDER, TYPE B
- ⑨ EXISTING SAFETY SHOULDER 1'
- ⑩ PROPOSED HMA BINDER COURSE IL-9.5FG, N70, 1 1/4"
- ⑪ PROPOSED BITUMINOUS MATERIALS (TACK COAT)
- ⑫ PROPOSED HOT-MIX ASPHALT SURFACE COURSE, MIX "D", N70, 1-1/2"
- ⑬ PROPOSED HOT-MIX ASPHALT SHOULDERS 8"
- ⑭ PROPOSED AGGREGATE WEDGE SHOULDER, TYPE B
- ⑮ PROPOSED LONGITUDINAL JOINT SEALANT

USER NAME = millerraj	DESIGNED -	REVISED -
	DRAWN -	REVISED -
PLOT SCALE = 100.0000' / in.	CHECKED -	REVISED -
PLOT DATE = 3/10/2020	DATE -	REVISED -

**STATE OF ILLINOIS
 DEPARTMENT OF TRANSPORTATION**

TYPICAL SECTIONS

SCALE: NTS SHEET 2 OF 2 SHEETS STA. TO STA.

F.A.P. RTE.	SECTION	COUNTY	TOTAL SHEETS	SHEET NO.
310	(56,57)RS-4	GREENE/JERSEY	12	7
CONTRACT NO. 76L20				
ILLINOIS FED. AID PROJECT				

MODEL: Default
 FILE: \\nrcs-pc1\pub\harron.dwg
 PLOT: \\nrcs-pc1\pub\harron.dwg
 PLOT DATE: 3/10/2020
 PLOT SCALE: 100.0000' / in.
 PLOT SHEET: 2 OF 2
 PLOT STA: STA.
 PLOT TO STA: TO STA.
 PROJECT: ILLINOIS FED. AID PROJECT
 CONTRACT NO.: 76L20
 SHEET NO.: 7
 COUNTY: GREENE/JERSEY
 SECTION: (56,57)RS-4
 F.A.P. RTE.: 310

SHOULDER SCHEDULE									
STA.	TO	STA.	LENGTH	*EXCAVATING AND GRADING EXISTING SHOULDER	*HMA SHOULDERS 8"	*PAVED SHOULDER REMOVAL	*AGGREGATE WEDGE SHOULDER, TYPE B	*SHOULDER RUMBLE STRIPS, 8"	*BITUMINOUS MATERIAL (TACK COAT)
			FOOT	UNIT	SQ YD	SQ YD	TON	FOOT	POUND
GREENE COUNTY									
353+30	TO	560+20	20690	414	18391	4598	1106.3	41380	2931.15
JERSEY COUNTY									
560+20	TO	654+45	9425	189	8378	2094	503.9	18850	1241.40
TOTAL:				595	26514	6607	1590	59464	4173

NOTE: *TOTAL QUANTITIES WERE ADJUSTED TO SUBTRACT SIDE ROAD ENTRANCES 766'

COMBINATION CURB & GUTTER REMOVAL SCHEDULE		
LOCATION	CORNER OF INTERSECTION N/W/S/E	CURB & GUTTER REMOVAL (FOOT)
GREENE COUNTY		
TR 285 (750 N/MID CITY RD.) STA. 353+60	NW	54
	NE	27
	SW	20
	SE	17
N 700 RD. STA. 380+68	NW	5
	NE	
	SW	10
	SE	
650 N. STA. 412+36	NW	9
	NE	
	SW	9
	SE	
E. KANE RD. (500 N.) STA. 502+12	NW	10
	NE	19
	SW	15
	SE	5
450 N. (SE 850 RD.) STA. 528+52	NW	10
	NE	17
	SW	10
	SE	15
JERSEY COUNTY		
ALLEN RD. STA. 576+04	NW	9
	NE	
	SW	10
	SE	
TOLMAN LN. STA. 618+28	NW	
	NE	25
	SW	
	SE	10
TOTAL:		306

PAVEMENT PATCHING, 19"				
STATION	LOCATION NB/SB	WIDTH	LENGTH	TYPE IV
		(FOOT)	(FOOT)	(SQ YD)
JERSEY COUNTY				
618+28	NB	13	20	29.0
618+28	SB	13	20	29.0
644+68	NB	13	30	43.0
644+68	SB	13	30	43.0
SUB TOTAL:				144.0
PROJECTED FAILURES 20%				29
TOTAL:				173

RESURFACING SCHEDULE								
STA.	TO	STA.	LENGTH	HMA SURFACE REMOVAL 2 3/4"	HMA BINDER COURSE, IL-9.5FG, N70, 1 1/4"	HMA SURFACE COURSE, IL-9.5, MIX D, 1 1/2"	BITUMINOUS MATERIAL (TACK COAT)	LONGITUDINAL JOINT SEALER
			FOOT	SQ YD	TON	TON	POUND	FOOT
GREENE COUNTY								
349+00	TO	560+20	21120	56320.0	3942.4	4730.9	38016.0	21120.0
JERSEY COUNTY								
560+20	TO	654+45	9425	25133.3	1759.3	2111.2	16965.0	9425.0
TOTAL:				81453	5702	6842	54981	30545

SIDEROADS SCHEDULE	
STATION	TEMPORARY RAMPS (SQYD)
GREENE COUNTY	
349+00	33.3
750 N. (TR 285)	48.0
750 N. (TR 285)	46.7
700 N.	42.7
650 N.	52.0
KANE RD. (500 N.)	77.3
KANE RD. (500 N.)	67.3
450 N. (SE 850)	43.3
450 N. (SE 850)	44.7
JERSEY COUNTY	
ALLEN RD.	44.7
TOLMAN RD.	44.0
654+45	33.3
TOTAL:	577

MODEL: Default
FILE: \\nrc\p\planningroom\dat\illinois.gov\PROJECTS\DOT\Documents\DOT\Office\Drawings\DOT\Projects\DOT\Drawings\DOT\76L20\sh-sched.dgn

USER NAME = millerraj	DESIGNED -	REVISED -
	DRAWN -	REVISED -
PLOT SCALE = 100,0000 ' / in.	CHECKED -	REVISED -
PLOT DATE = 3/10/2020	DATE -	REVISED -

STATE OF ILLINOIS
DEPARTMENT OF TRANSPORTATION

SCHEDULES OF QUANTITIES

SCALE: NTS SHEET 1 OF 2 SHEETS STA. TO STA.

F.A.P. RTE.	SECTION	COUNTY	TOTAL SHEETS	SHEET NO.
310	(56,57)RS-4	GREENE/JERSEY	12	8
CONTRACT NO. 76L20			ILLINOIS FED. AID PROJECT	

THERMOPLASTIC PAVEMENT MARKING SCHEDULE													
STA	TO	STA	LENGTH FOOT	NO PASSING DIRECTION NB/SB	4" LINE			RAISED REFLECTIVE PAVEMENT MARKERS TWO-WAY		SHORT TERM PAVEMENT MARKING FOOT	SHORT TERM PAVEMENT MARKINGS REMOVAL SQ FT	TEMPORARY PAVEMENT MARKINGS 4" FOOT	TEMPORARY PAVEMENT MARKING REMOVAL SQ FT
					WHITE *EDGE LINE FOOT	YELLOW 10'-30' SKIP-DASH FOOT	SOLID NO PASSING FOOT	AMBER EACH	REMOVAL EACH				
GREENE COUNTY													
349+00	TO	363+73	1473		2946	368.3		18	18	402	45	3314.3	1105
363+73	TO	374+88	1115	SB	2230	278.8	1115	14	14	608	68	3623.8	1208
374+88	TO	381+38	650	NB/SB	1300		1300	8	8	177	20	2600.0	867
381+38	TO	391+88	1050	NB	2100	262.5	1050	13	13	286	32	3412.5	1138
391+88	TO	392+88	100		200	25.0		1	1	27	3	225.0	75
392+88	TO	400+73	785	SB	1570	196.3	785	10	10	214	24	2551.3	850
400+73	TO	404+08	335		670	83.8		4	4	91	10	753.8	251
404+08	TO	411+50	742	NB	1484	185.5	742	9	9	202	22	2411.5	804
411+50	TO	423+68	1218		2436	304.5		15	15	332	37	2740.5	914
423+68	TO	432+38	870	SB	1740	217.5	870	11	11	237	26	2827.5	943
432+38	TO	434+58	220		440	55.0		3	3	60	7	495.0	165
434+58	TO	443+18	860	NB	1720	215.0	860	11	11	235	26	2795.0	932
443+18	TO	455+93	1275		2550	318.8		16	16	348	39	2868.8	956
455+93	TO	466+91	1098	SB	2196	274.5	1098	14	14	299	33	3568.5	1190
466+91	TO	471+66	475	NB/SB	950		950	6	6	259	29	1900.0	633
471+66	TO	481+88	1022	NB	2044	255.5	1022	13	13	279	31	3321.5	1107
481+88	TO	488+53	665	SB	1330	166.3	665	8	8	181	20	2161.3	720
488+53	TO	493+03	450		900	112.5		6	6	123	14	1012.5	338
493+03	TO	501+99	896	NB	1792	224.0	896	11	11	244	27	2912.0	971
501+99	TO	560+20	5821		11642	1455.3		73	73	1588	176	13097.3	4366
JERSEY COUNTY													
560+20	TO	567+21	701	SB	1210	175.3	701	9	9	191	21	2086.3	695
567+21	TO	570+51	330		468	82.5		4	4	90	10	550.5	184
570+51	TO	576+26	575	NB/SB	958		1150	7	7	314	35	2108.0	703
576+26	TO	582+62	636	SB	1080	159.0	636	8	8	173	19	1875.0	625
582+62	TO	585+12	250		308	62.5		3	3	68	8	370.5	124
585+12	TO	593+12	800	NB	1408	200.0	800	10	10	218	24	2408.0	803
593+12	TO	601+16	804	SB	1416	201.0	804	10	10	219	24	2421.0	807
601+16	TO	604+01	285		378	71.3		4	4	78	9	449.3	150
604+01	TO	612+01	800	NB	1408	200.0	800	10	10	218	24	2408.0	803
612+01	TO	625+71	1370		2548	342.5		17	17	374	42	2890.5	964
625+71	TO	632+21	650	SB	1108	162.5	650	8	8	177	20	1920.5	640
632+21	TO	636+11	390		588	97.5		5	5	106	12	685.5	229
636+11	TO	643+11	700	NB	1208	175.0	700	9	9	191	21	2083.0	694
643+11	TO	654+45	1134		2076	283.5		14	14	309	34	2359.5	787
SUB TOTAL:					57636	7211	17594					82441	
TOTAL:					82441			382	382	8921	991	82441	27736

NOTE: *TOTAL QUANTITY WAS ADJUSTED TO SUBTRACT SIDE ROAD ENTRANCES 766' FROM EDGELINE ONLY THE REMOVAL OF THE FINAL APPLICATION OF SHORT TERM SHALL BE PAID FOR.

MODEL: Default
FILE: Model: pic\uplanroom.dwg\illinois.gov\PWIDOT\Documents\DOT_Offices\Illin\DOT_CADD\data\CAD\sheet\0876L20-ht-sched.rle.dgn

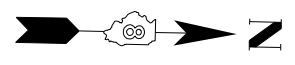
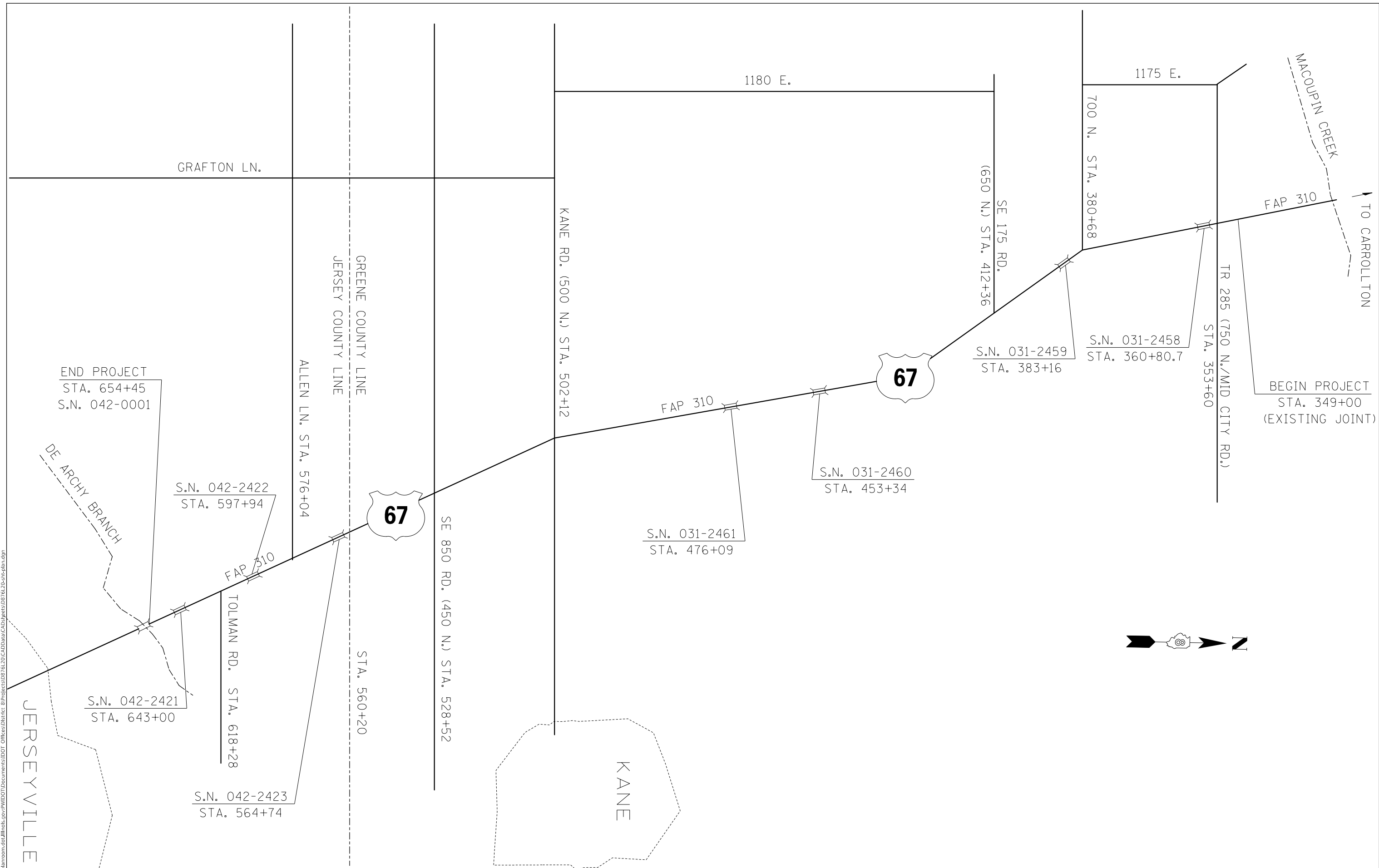
USER NAME = millerraj	DESIGNED -	REVISED -
	DRAWN -	REVISED -
PLOT SCALE = 100.0000' / in.	CHECKED -	REVISED -
PLOT DATE = 3/10/2020	DATE -	REVISED -

**STATE OF ILLINOIS
DEPARTMENT OF TRANSPORTATION**

SCHEDULES OF QUANTITIES

SCALE: NTS SHEET 2 OF 2 SHEETS STA. TO STA.

F.A.P. RTE.	SECTION	COUNTY	TOTAL SHEETS	SHEET NO.
310	(56,57)RS-4	GREENE/JERSEY	12	9
CONTRACT NO. 76L20				
ILLINOIS FED. AID PROJECT				



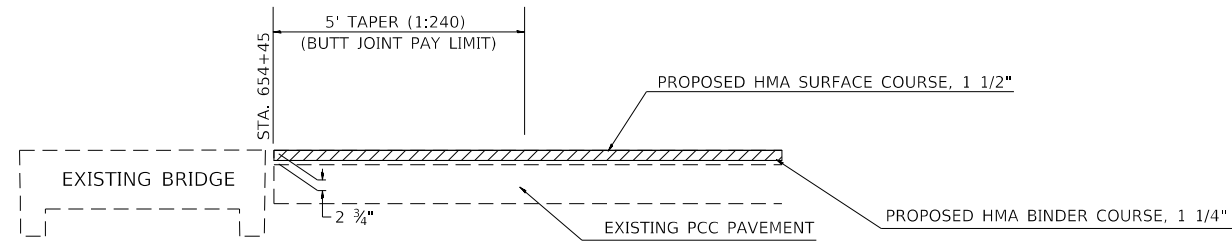
MODEL: Default
 FILE: \\miller\c:\p\planningroom\dat\illinois\gov\p\w\dot\Documents\IBDOT\Office\IBDOT\Projects\IBDOT\Projects\IBDOT\76L20\p\lbn.dgn

USER NAME = millerraj	DESIGNED -	REVISED -
	DRAWN -	REVISED -
PLOT SCALE = 100,0000' / in.	CHECKED -	REVISED -
PLOT DATE = 3/10/2020	DATE -	REVISED -

**STATE OF ILLINOIS
DEPARTMENT OF TRANSPORTATION**

LOCATION MAP	
SCALE: NTS	SHEET 1 OF 1 SHEETS
STA.	TO STA.

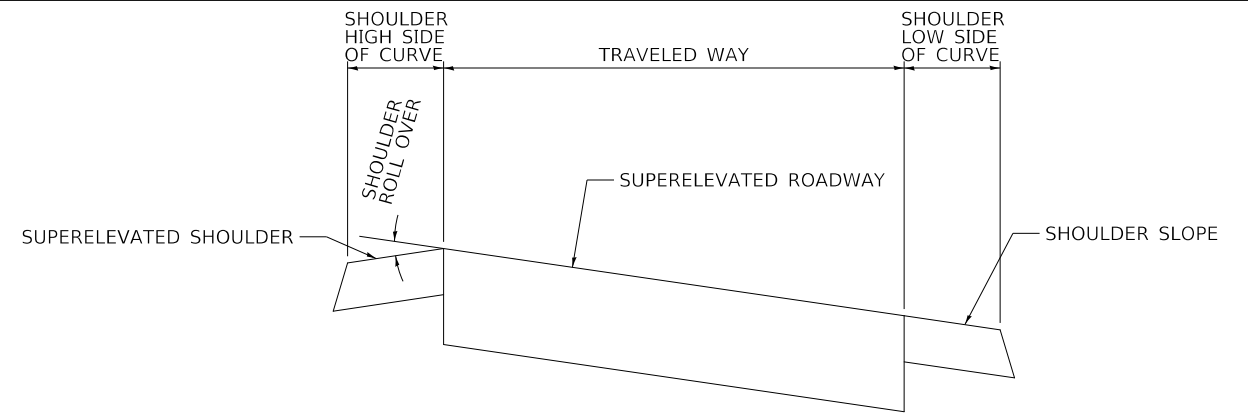
F.A.P. RTE.	SECTION	COUNTY	TOTAL SHEETS	SHEET NO.
310	(56,57)R5-4	GREENE/JERSEY	12	10
CONTRACT NO. 76L20				
ILLINOIS FED. AID PROJECT				



PROPOSED SURFACE REMOVAL 2 3/4"

JOINT TO BE CONSTRUCTED AT BRIDGE APPROACH

STA. 654+45

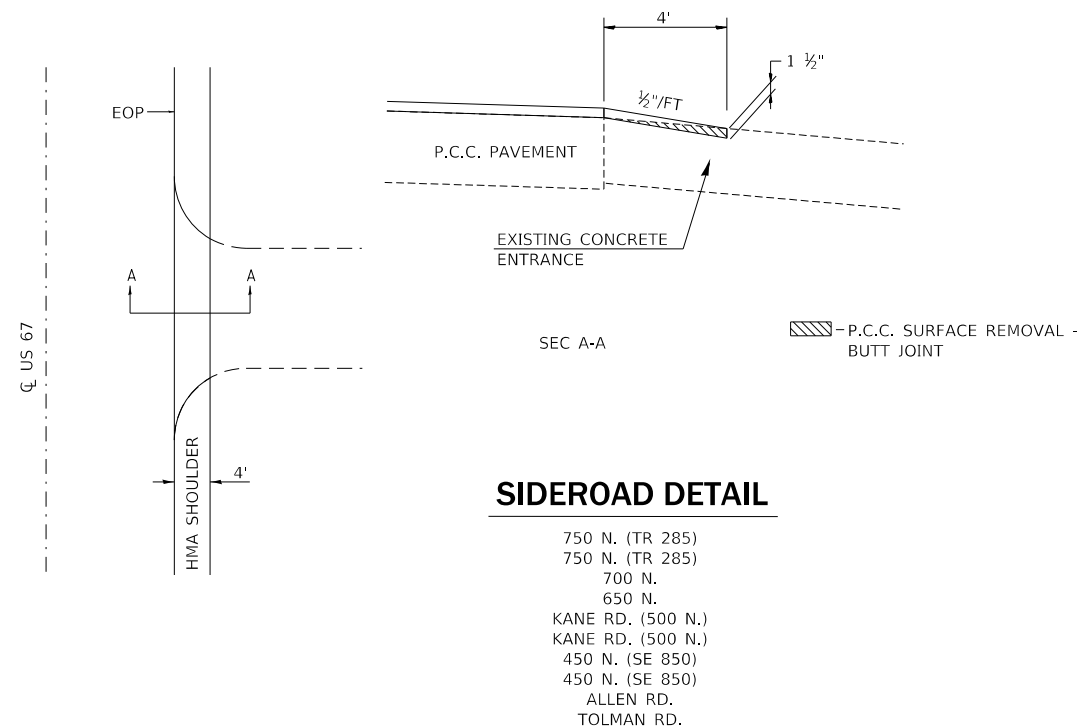


TRAVELED WAY (%)	SHOULDER SLOPE (%)		ROLLOVER (%)
	HIGH SIDE	LOW SIDE	
3.5%	4.0%	4.0%	7.5%
4.0%	4.0%	4.0%	8.0%
4.5%	3.5%	4.5%	8.0%
5.0%	3.0%	5.0%	8.0%
5.5%	2.5%	5.5%	8.0%
6.0%	2.0%	6.0%	8.0%
6.5%	1.5%	6.5%	8.0%
7.0%	1.0%	7.0%	8.0%
7.5%	0.5%	7.5%	8.0%
8.0%	0.0%	8.0%	8.0%

NOTE: ANY CHANGES TO THE VALUES SHOWN MUST BE APPROVED BY THE RESIDENT ENGINEER. THE MAXIMUM ROLLOVER SHALL NOT EXCEED 8.0%.

SHOULDER DETAIL FOR SUPERELEVATED CURVES

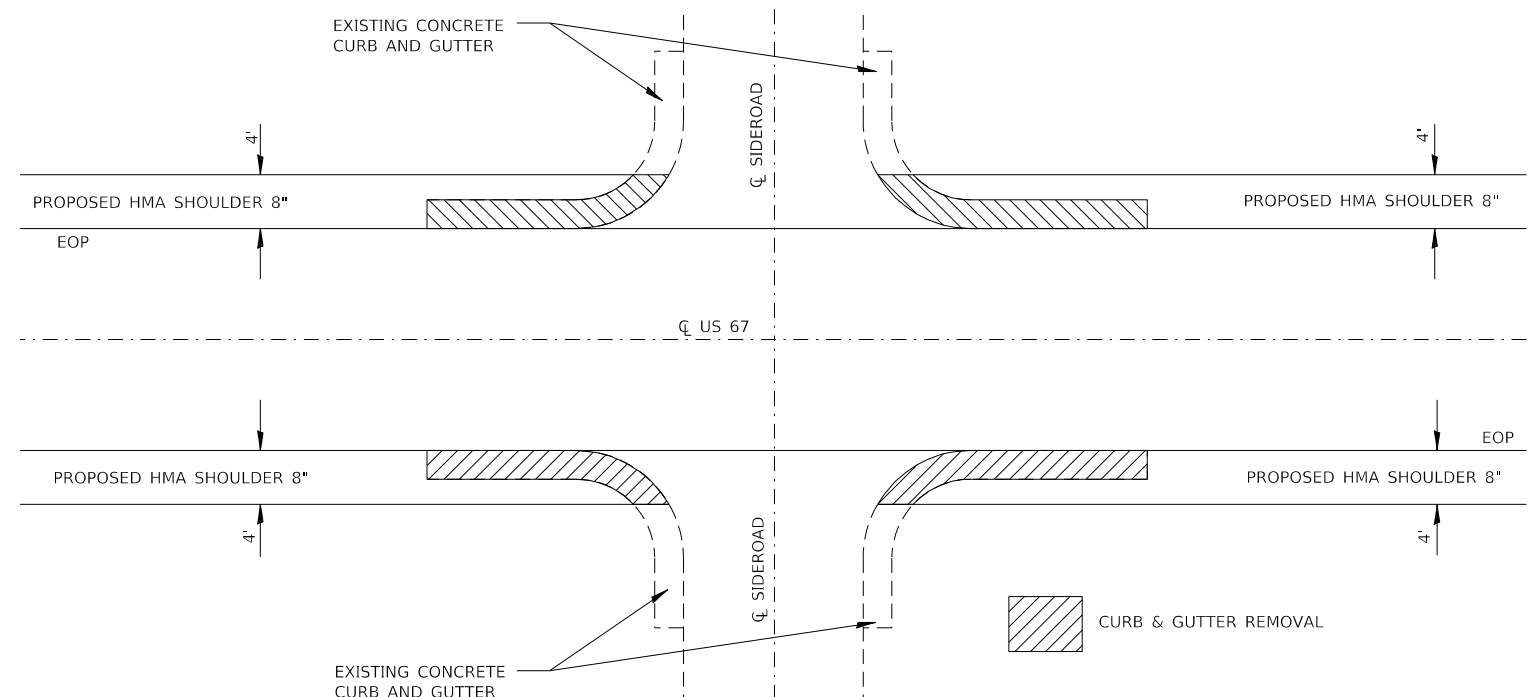
NOT TO SCALE



SIDEROAD DETAIL

750 N. (TR 285)
 750 N. (TR 285)
 700 N.
 650 N.
 KANE RD. (500 N.)
 KANE RD. (500 N.)
 450 N. (SE 850)
 450 N. (SE 850)
 ALLEN RD.
 TOLMAN RD.

NOT TO SCALE



CURB & GUTTER REMOVAL DETAIL

TR 285 (750 N.)
 N. 700 RD.
 SE 175 RD.
 KANE RD.
 SE 600 RD.
 450 N.
 ALLEN RD.
 TOLMAN RD.

MODEL: Default
 FILE: Model: P:\pub\planroom.dwg
 PROJECT: I:\projects\DOT\Documents\DOT_Offices\I\dot\p\projects\DOT\76L20\CADD\Drawings\DOT\76L20\Sheet\plan.dwg

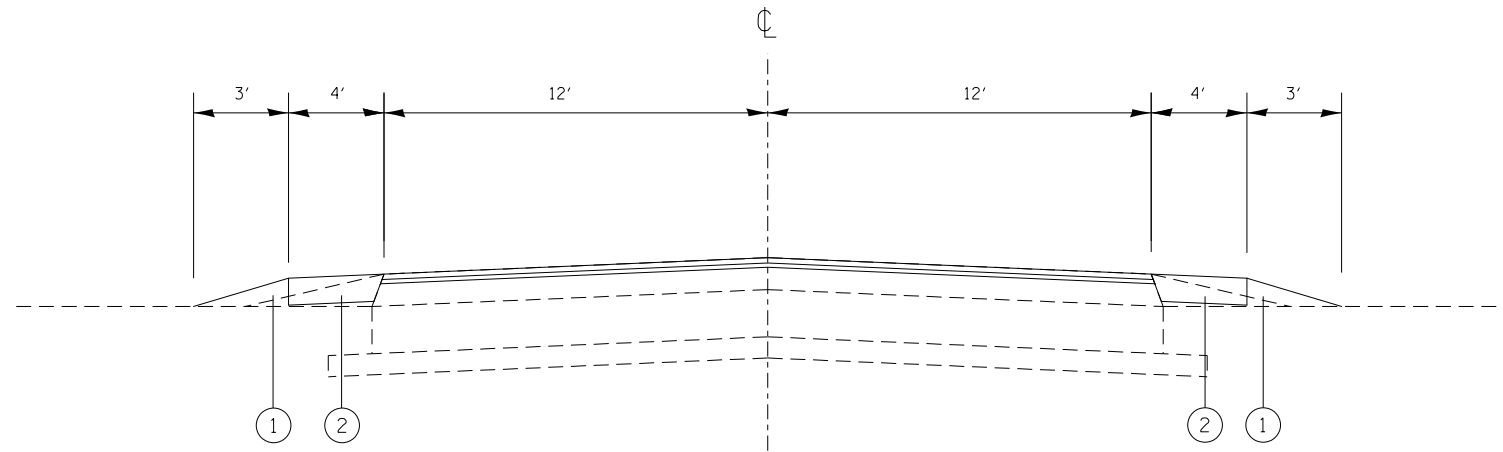
USER NAME = millerraj	DESIGNED -	REVISED -
PLOT SCALE = 100,0000' / in.	DRAWN -	REVISED -
PLOT DATE = 3/10/2020	CHECKED -	REVISED -
	DATE -	REVISED -

**STATE OF ILLINOIS
 DEPARTMENT OF TRANSPORTATION**

DETAILS SHEET

SCALE: NTS SHEET 1 OF 1 SHEETS STA. TO STA.

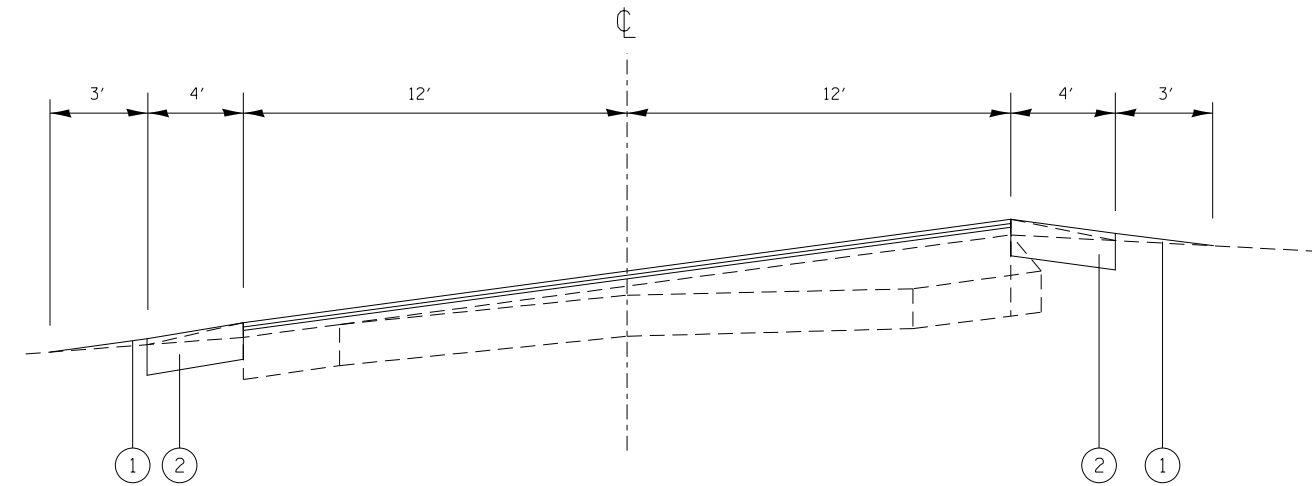
F.A.P. RTE.	SECTION	COUNTY	TOTAL SHEETS	SHEET NO.
310	(56,57)RS-4	GREENE/JERSEY	12	11
CONTRACT NO. 76L20				
ILLINOIS FED. AID PROJECT				



TYPICAL EROSION CONTROL SECTION

STA. 353+30 TO STA. 361+53
 STA. 483+00 TO STA. 489+95
 STA. 588+00 TO STA. 600+00
 STA. 642+75 TO STA. 643+15

NOTE: SEE THE SHOULDER SCHEDULE FOR EXCAVATION AND GRADING OF EXISTING SHOULDERS OMISSIONS.

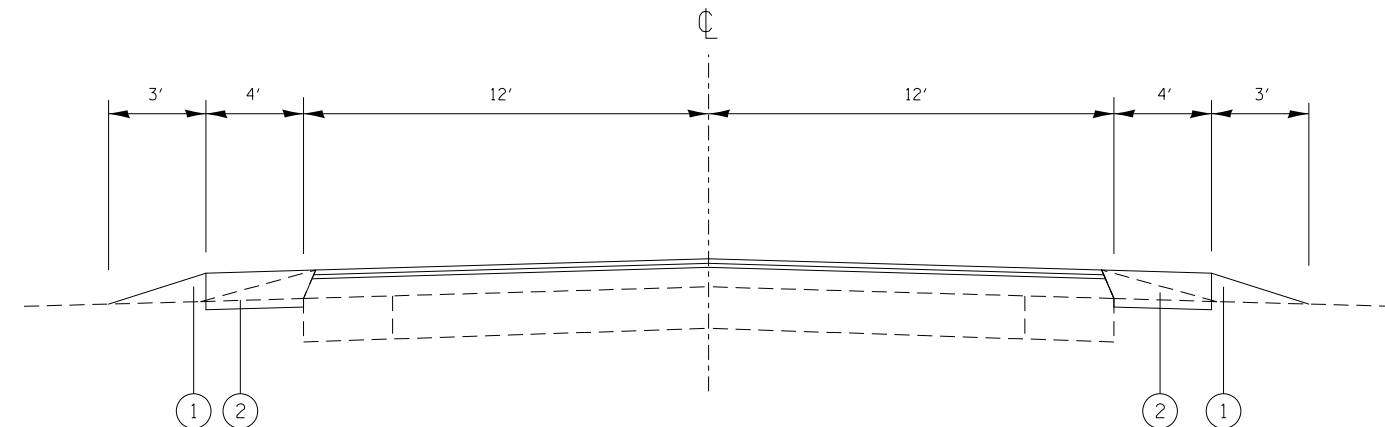


SUPERELEVATED EROSION CONTROL SECTION

STA. 373+55 TO STA. 384+45
 STA. 419+88 TO STA. 431+31

EROSION AND SETTLEMENT CONTROL

1. THE WORK DESCRIBED ON THESE DRAWINGS ARE THE INTEGRAL PART OF THE STORM WATER POLLUTION PREVENTION PLAN USED TO OBTAIN THE NPDES FROM IEPA FOR THE CONSTRUCTION OF THIS PROJECT.
2. THE PURPOSE OF THE EROSION AND SEDIMENT CONTROL MEASURES INCLUDED FOR THIS PROJECT IS TO LIMIT THE SEDIMENT POLLUTION IMPACT OF ANY STORM WATER DISCHARGES THAT ORIGINATE ON THIS SITE OR OFF-SITE FLOWS THAT FLOW OVER THE DISTURBED AREAS OR DOWNSTREAM AREAS.
3. IT IS THE RESPONSIBILITY OF THE CONTRACTOR TO INSURE THAT SEDIMENT TRANSPORTED OFF THE JOB SITE IS REDUCED BY A COMBINATION OF MINIMIZATION OF EROSION AT THE SOURCE AND INSTALLATION OF SPECIFIC MEASURES TO CONTROL OR REDUCE THE TRANSPORT OF SEDIMENT. A COPY OF THE EROSION AND SEDIMENT CONTROL SCHEDULE BEING IMPLEMENTED BY THE CONTRACTOR WILL BE ON THE SITE AT ALL TIMES.
4. TO THE MAXIMUM EXTENT POSSIBLE, ALL FLOWS ORIGINATING OFF THE CONSTRUCTION SITE WILL BE DIVERTED AROUND DISTURBED AREAS OR WILL BE CONVEYED THROUGH THE SITE IN A MANNER THAT UNTREATED ON-SITE RUNOFF DOES NOT MIX WITH THE OFF-SITE RUNOFF.
5. ALL RUNOFF ORIGINATING ON DISTURBED AREAS ASSOCIATED WITH THIS PROJECT WILL PASS THROUGH ONE OR MORE MEASURES THAT WILL MINIMIZE OFF-SITE SEDIMENT IMPACTS OF THE CONSTRUCTION ACTIVITY.
6. DISTURBED AREAS ARE TO BE PROTECTED FROM EROSION IN A TIMELY MANNER. UPON COMPLETION OF GRADING OR CONSTRUCTION, THE AREA WILL BE STABILIZED USING PERMANENT MEASURES.
7. THE CONTRACTOR SHALL DESIGNATE ONE OF HIS EMPLOYEES AS RESPONSIBLE FOR IMPLEMENTATION OF THE EROSION AND SEDIMENT CONTROL PLAN ON ALL DISTURBED AREAS. THIS PERSON IS TO BE KNOWLEDGEABLE ABOUT THE INSTALLATION AND MAINTENANCE OF THE REQUIRED MEASURES. THIS EMPLOYEE IS TO HAVE THE AUTHORITY TO CARRY OUT THE IMPLEMENTATION OF ANY INSTRUCTIONS CONCERNING THE EROSION AND SEDIMENT CONTROL PLAN GIVEN BY THE ENGINEER. ALL MEASURES WILL BE INSPECTED BY THE INDIVIDUAL AND THE ENGINEER ON A REGULAR BASIS (AT LEAST ONCE EVERY SEVEN DAYS) AND AFTER RAINFALL EVENTS GREATER THAN 1/2 INCH.
8. ALL AREAS DISTURBED BY THE CONTRACTOR OUTSIDE THE PROPOSED CONSTRUCTION LIMITS SHALL BE SEEDED AT THE CONTRACTOR'S EXPENSE.
9. THE CONTRACTOR SHALL REMOVE ALL EXCAVATED MATERIAL FOR THE CONSTRUCTION OF THE 4FT HMA SHOULDERS FROM THE JOB SITE UNLESS DIRECTED BY THE RESIDENT ENGINEER.
10. THE CONTRACTOR SHALL REPLACE THE MATERIAL REMOVED FOR THE CONSTRUCTION OF THE 4FT HMA SHOULDER WITH THE FIRST LIFT OF THE HMA SHOULDER WITHIN THE SAME DAY TO PREVENT SEDIMENT EROSION.
11. THE EXCAVATED MATERIAL FROM THE CONSTRUCTION OF THE 3FT SHOULDERS SHALL NOT BE DEPOSITED ON THE JOB SITE.



TYPICAL EROSION CONTROL SECTION

STA. 361+53 TO STA. 373+55 STA. 489+95 TO STA. 588+00
 STA. 384+45 TO STA. 419+88 STA. 600+00 TO STA. 642+75
 STA. 431+31 TO STA. 483+00 STA. 643+15 TO STA. 654+45

LEGEND

- ① PROPOSED AGGREGATE WEDGE SHOULDER, TYPE B
- ② PROPOSED HMA SHOULDER, 8"

**STATE OF ILLINOIS
 DEPARTMENT OF TRANSPORTATION**

EROSION CONTROL DETAIL (SWPPP)

SCALE: NTS SHEET 1 OF 1 SHEETS STA. TO STA.

F.A.P. RTE.	SECTION	COUNTY	TOTAL SHEETS	SHEET NO.
310	(56,57)RS-4	GREENE/JERSEY	12	12
CONTRACT NO. 76L20				
ILLINOIS FED. AID PROJECT				

MODEL: Default
 FILE: \\nrcs\p1\pub\harrington\dot\Documents\DOT - Offices\District 8\Projects\0876L20\CADD\Drawings\0876L20-01-01.dgn