

DISTRICT ONE BUREAU OF MAINTENANCE: J. STUMPNER  
MAINTENANCE LANDSCAPE DESIGNER: R. WANNER / T. JACKSON (847) 705-4171

ROUTE	SECTION	COUNTY	TOTAL SHEETS	SHEET NUMBER
VARIOUS	2008-034 DTR	VARIOUS	4	1

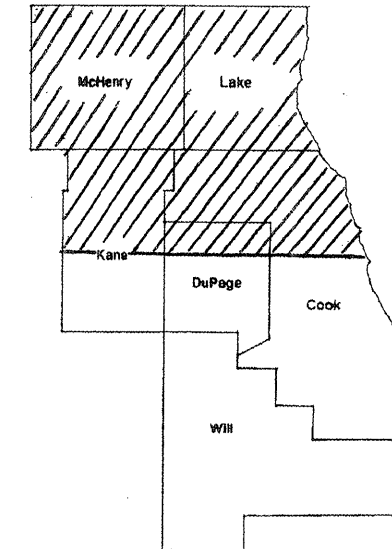
CONTRACT 60E75  
D-91-521-08

STATE OF ILLINOIS  
DEPARTMENT OF TRANSPORTATION  
DIVISION OF HIGHWAYS  
DISTRICT ONE  
**PROPOSED HIGHWAY PLANS**

ROUTE: VARIOUS  
SECTION 2008-034 DTR  
TREE REMOVAL AND PRUNING  
VARIOUS COUNTIES  
C-91-521-08

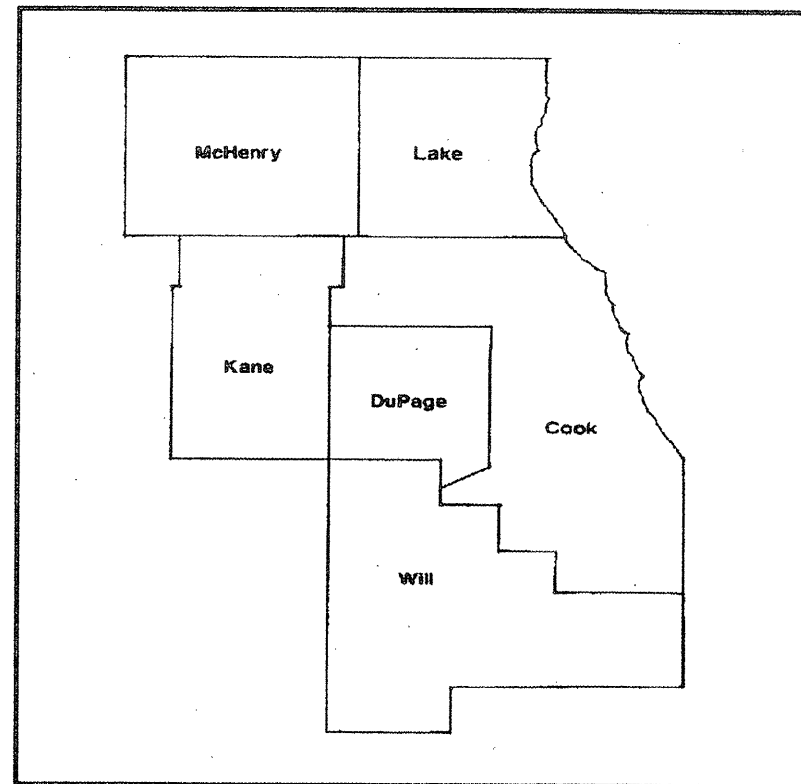
**INDEX OF SHEETS**

- 1) COVER SHEET, INDEX OF SHEETS
- 2) SUMMARY OF QUANTITIES, STATE STANDARDS
- 3) SAMPLE WORK ORDER
- 4) TC-17 TRAFFIC CONTROL DETAIL FOR FREEWAY SHOULDER CLOSURES AND PARTIAL RAMP CLOSURES



LOCATION OF IMPROVEMENT INDICATED THUS:

**IMPROVEMENT IS IN VARIOUS LOCATIONS WITHIN DISTRICT ONE**



**STATE OF ILLINOIS  
DEPARTMENT OF TRANSPORTATION  
DIVISION OF HIGHWAYS**

SUBMITTED: July 17, 2008  
*Diana M. O'Keefe* DEPUTY DIRECTOR OF HIGHWAYS, REGION ENGINEER

August 15, 2008  
*Eric E. Harrel* INTERIM ENGINEER OF DESIGN AND ENVIRONMENT

August 15, 2008  
*Christine M. Reed* DIRECTOR OF HIGHWAYS, CHIEF ENGINEER

**PRINTED BY THE AUTHORITY  
OF THE STATE OF ILLINOIS**

J.U.L.I.E.: JOINT UTILITY LOCATION  
INFORMATION FOR EXCAVATION  
(800) 892-0123 OR 811

CONTRACT 60E75

<b>ROUTE</b>	<b>SECTION</b>	<b>COUNTY</b>	<b>TOTAL SHEETS</b>	<b>SHEET NUMBER</b>
VARIOUS	2008-034 DTR	VARIOUS	4	2

CONTRACT 60E75

**SUMMARY OF QUANTITIES**

URBAN  
100%  
STATE

<b>PAY ITEM</b>	<b>DESCRIPTION</b>	<b>UNIT</b>	<b>CONTRACT MAINT FUND Y003</b>	<b>FORMAL CONTRACTS FUND Y003</b>	<b>TOTAL</b>
20100110	TREE REMOVAL (6- 15 UNITS DIAMETER)	UNIT		1500	1500
20100210	TREE REMOVAL (OVER 15 UNITS DIAMETER)	UNIT	4500		4500
20101300	TREE PRUNING ( 1 TO 10 INCH DIAMETER)	EACH		25	25
20101350	TREE PRUNING (OVER 10 INCH DIAMETER)	EACH		25	25
67100100	MOBILIZATION	L SUM		1	1
K1003680	MULCH	SQ YD		4000	4000
X0322453	WEED CONTROL, PRE-EMERGENT	POUND		200	200
X0322856	WEED CONTROL, NON-SELECTIVE AND NON-RESIDUAL	GALLON		5	5
X0325222	WEED CONTROL, BASAL TREATMENT	GALLON		30	30
X0325897	SELECTIVE ELM CLEARING	UNIT		10	10
X2010100	TREE LIMB REMOVAL (4 TO 10 INCHES DIAMETER)	EACH		25	25
X2010200	TREE LIMB REMOVAL (OVER 10 INCHES DIAMETER)	EACH		25	25
X2010300	TREE REMOVAL (UNDER 6 UNITS DIAMETER)	UNIT		250	250
X2010400	STUMP REMOVAL ONLY	UNIT		100	100
Z0064800	SELECTIVE CLEARING	UNIT		10	10

**STATE STANDARDS**

701001-01 701006-02 701101-01 701106-01

701201-02 701301-02 701421-01

701501-04 701601-05 701901

ILLINOIS DEPARTMENT OF TRANSPORTATION

SUMMARY OF QUANTITIES

TREE REMOVAL AND PRUNING

ROUTE	SECTION	COUNTY	TOTAL SHEETS	SHEET NUMBER
VARIOUS	2005-034DTR	VARIOUS	4	3

CONTRACT 60E75

ID: \_\_\_\_\_

### DEAD AND DISEASED TREE REMOVAL REQUEST

REQUESTED BY: \_\_\_\_\_ DATE OF REQUEST: \_\_\_\_\_

YARD: \_\_\_\_\_ TELEPHONE: (    ) \_\_\_\_\_

*(Please complete information when request for tree removal is from outside the Bureau of Maintenance)*

NAME: \_\_\_\_\_

ADDRESS: \_\_\_\_\_

TELEPHONE: (    ) \_\_\_\_\_

**LOCATION OF DEAD/DISEASED TREE(S)**  
*(Please fill out completely to expedite locating the repair)*

COUNTY: \_\_\_\_\_ TOWN/CITY: \_\_\_\_\_

MARKED/NAMED ROUTE: \_\_\_\_\_

DIRECTIONS FROM NEAREST MAJOR CROSS ROAD OR MAJOR LANDMARK: \_\_\_\_\_

\_\_\_\_\_

SIDE OF ROADWAY: \_\_\_\_\_

ADDITIONAL DIRECTIONS TO TREE: \_\_\_\_\_

\_\_\_\_\_

**PLEASE INDICATE APPROXIMATE SIZE AND NUMBER OF TREES BASED ON VISUAL ESTIMATE**

\_\_\_\_\_ (Size/Number)

COMMENTS: \_\_\_\_\_

OFFICE USE ONLY

DATE INSPECTED: \_\_\_\_\_ TYPE OF REMOVAL: \_\_\_\_\_

DTR #: \_\_\_\_\_

CONTRACT #: \_\_\_\_\_

WORK ORDER #: \_\_\_\_\_ NOTES: \_\_\_\_\_

POSTED IN SUMMARY: \_\_\_\_\_

**RETURN REQUESTS TO CONTRACTS SECTION**

s:\wplcontracts\forms\gr60110e.doc

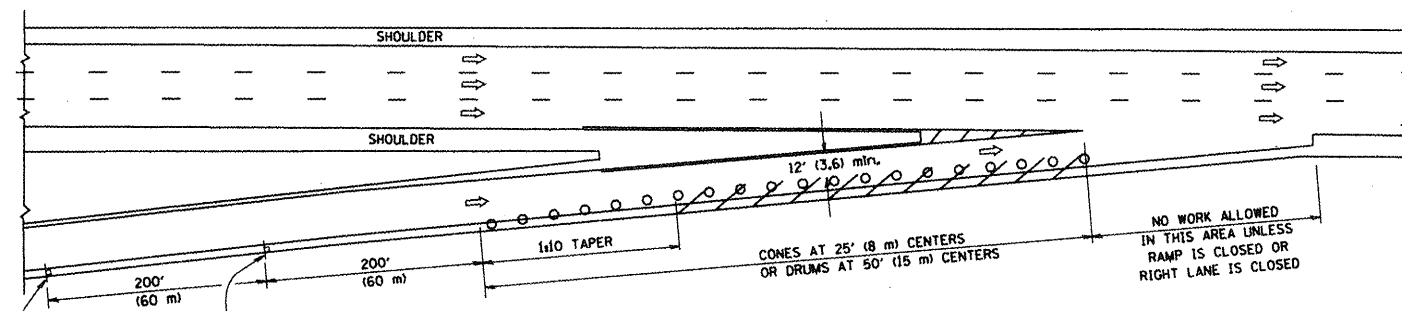
10-28-98

ILLINOIS DEPARTMENT OF TRANSPORTATION

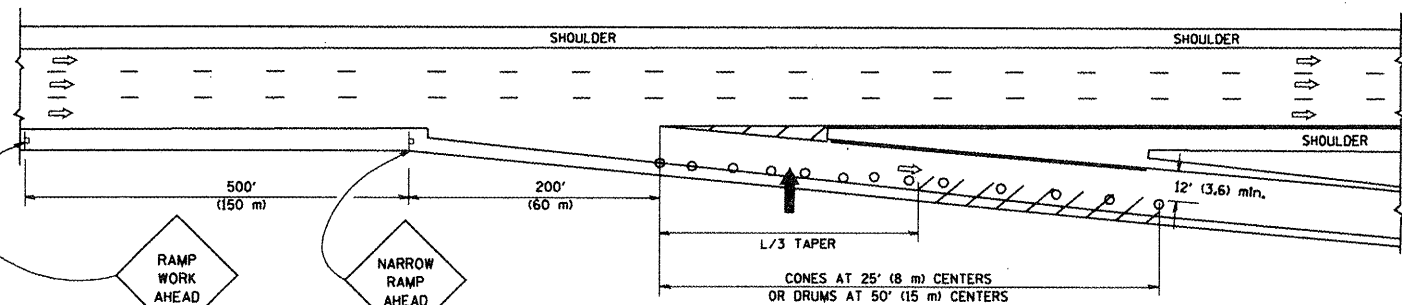
**SAMPLE WORK ORDER**

TREE REMOVAL AND PRUNING

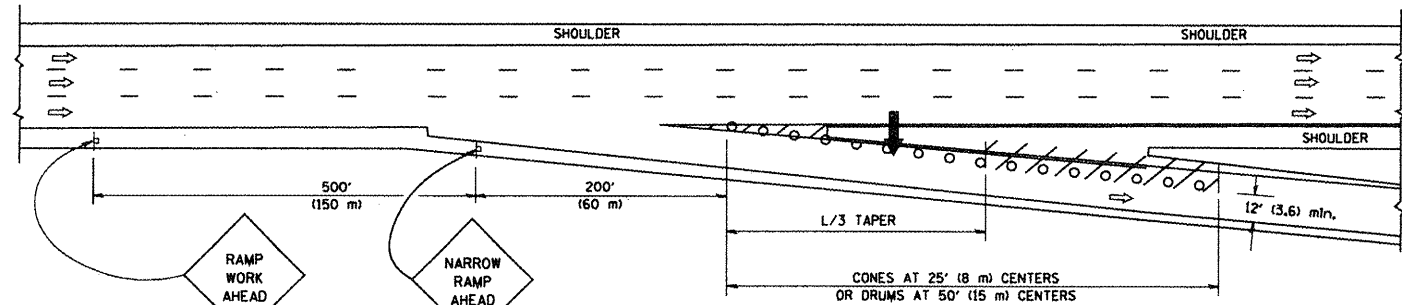
PARTIAL RAMP CLOSURE DETAILS



TYPICAL ENTRANCE RAMP



TYPICAL EXIT RAMP



TYPICAL EXIT RAMP

SYMBOLS

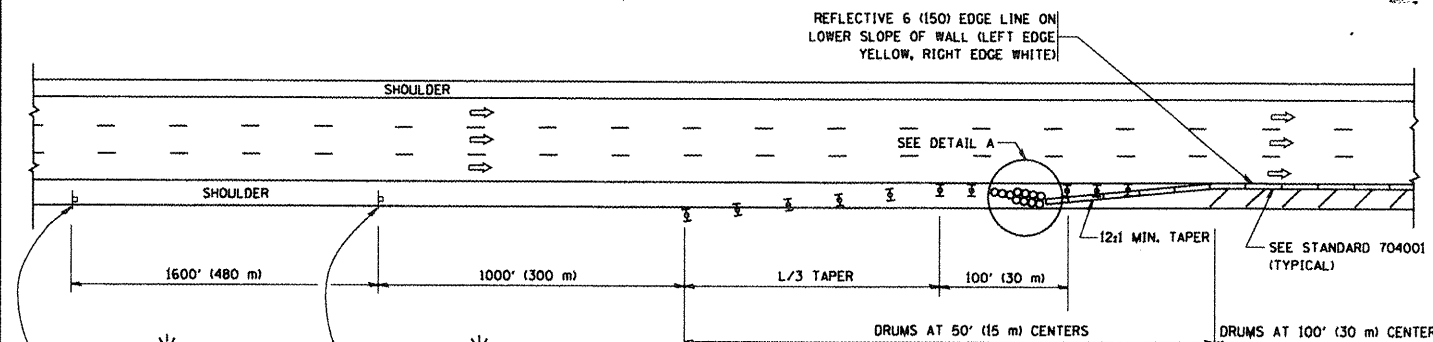
- ARROWBOARD
- WORK AREA
- SIGN ON PORTABLE OR PERMANENT SUPPORT
- FLAGGER WITH CONTROL SIGN
- TYPE II BARRICADE, DRUM OR VERTICAL BARRICADE WITH STEADY BURN MONO-DIRECTIONAL LIGHT
- CONE, DRUM OR BARRICADE

GENERAL NOTES

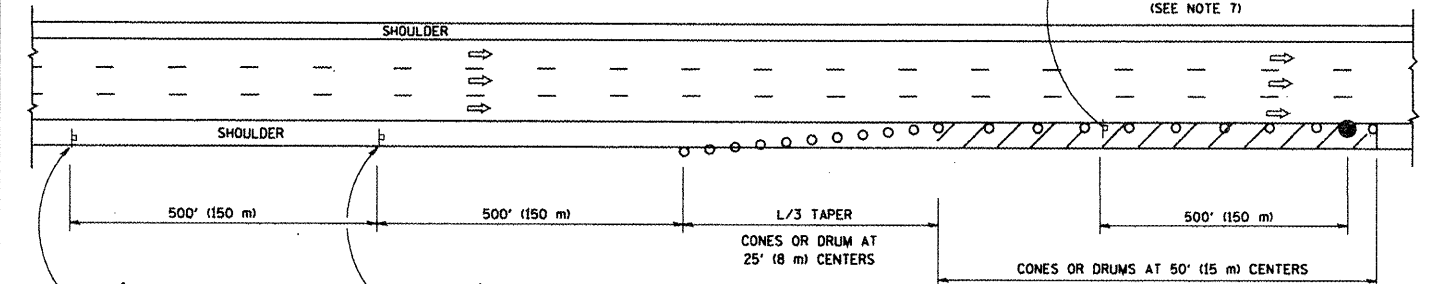
1. THE "L" DISTANCE EQUALS:
 

SPEED LIMIT	FORMULAS
45 mph (80 km/h) OR GREATER:	METRIC: $L=0.65(W/S)$ ENGLISH: $L=(W/S)$
W = WIDTH OF OFFSET IN FEET (METERS)	S = NORMAL POSTED SPEED MPH (KM/H)
2. PLASTIC DRUMS WITH HIGH PERFORMANCE REFLECTIVE SHEETING AND STEADY BURNING LIGHTS ARE REQUIRED FOR ALL NIGHTTIME CLOSURES.
3. ALL SIGNS SHALL BE POST MOUNTED IF THE CLOSURE TIME EXCEEDS FOUR DAYS.
4. FLASHING LIGHTS SHALL BE USED DURING THE HOURS OF DARKNESS AND SHALL BE INSTALLED ABOVE THE FIRST TWO SETS OF SIGNS.

SHOULDER CLOSURE DETAILS



PERMANENT SHOULDER CLOSURE



DAYTIME SHOULDER CLOSURE

THIS DETAIL IS USED WHERE:  
 1. VEHICLES, EQUIPMENT, WORKERS OR THEIR ACTIVITIES ENCR OACH IN AN AREA CLOSER THAN 15' (4.5 m) TO THE EDGE OF PAVEMENT FOR A PERIOD IN EXCESS OF 15 MINUTES.

ARRAY DESIGN PER MANUFACTURER TO BE NCHRP 350 COMPLIANT FOR POSTED SPEED.

DETAIL "A"  
 IMPACT ATTENUATOR, TEMPORARY  
 (SEE NOTE 5)

ALL DIMENSIONS ARE IN INCHES (MILLIMETERS) UNLESS OTHERWISE SHOWN.

FILE NAME = N:\state\d\22x34\1017.dgn	USER NAME = geg1enabt	DESIGNED - DRAWN - CHECKED - DATE -	REVISI ONS - J.A.F. 12-02 - D.W.S. - J.A.F. 12-06 - S.P.B. 01-07
--	--------------------------	--	--

STATE OF ILLINOIS  
 DEPARTMENT OF TRANSPORTATION

TRAFFIC CONTROL DETAILS FOR FREEWAY SHOULDER CLOSURES AND PARTIAL RAMP CLOSURES			
SCALE: NONE	SHEET NO. 1 OF 1 SHEETS	STA.	TO STA.

F.A. RTE.	SECTION	COUNTY	TOTAL SHEETS	SHEET NO.
	2009-0340R VAR 4		4	4
FED. ROAD DIST. NO. 1 ILLINOIS			CONTRACT NO. 60675	