

F.A.P. RTE.	SECTION	COUNTY	TOTAL SHEETS	SHEET NO.
840	143RS-2	WILL	15	1
FED. ROAD DIST. NO.	ILLINOIS	CONTRACT NO. 62658		

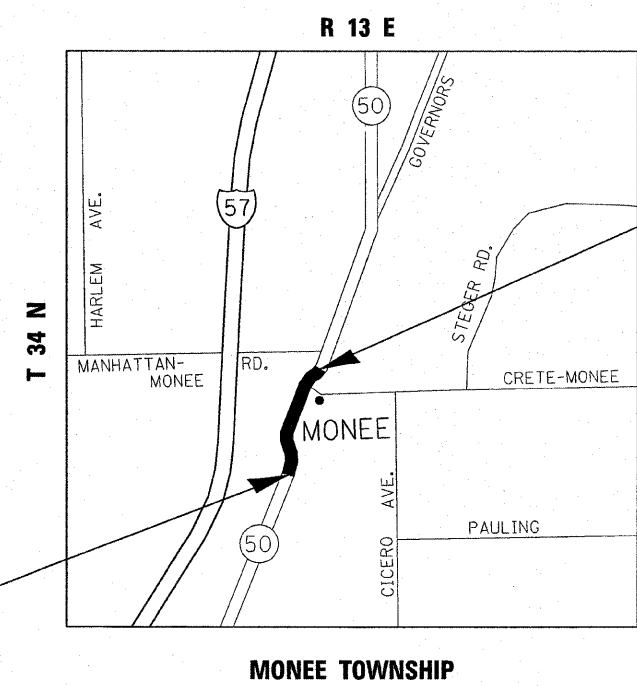
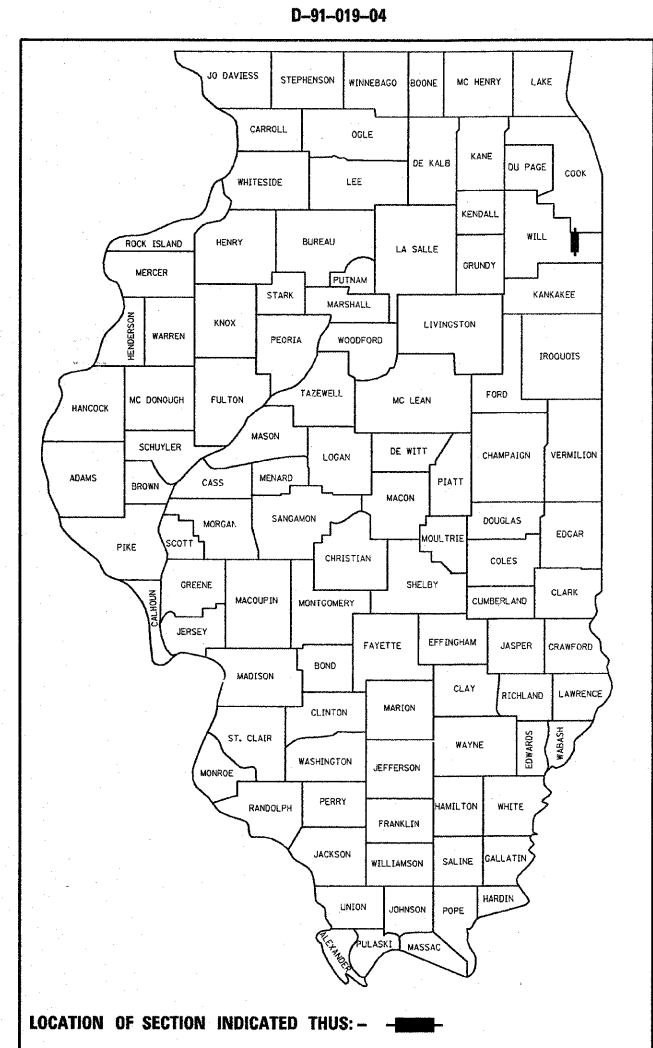
STATE OF ILLINOIS  
DEPARTMENT OF TRANSPORTATION  
DIVISION OF HIGHWAYS

**PROPOSED  
HIGHWAY PLANS**

F.A.P. ROUTE 840: IL-50  
SECTION: 143RS-2  
I.C. RR TO WILSON ST.  
RESURFACING (MAINTENANCE)  
WILL COUNTY  
D-91-019-04

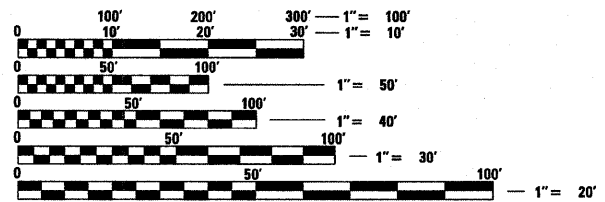
FOR INDEX OF SHEETS, SEE SHEET NO. 2

THE IMPROVEMENT IS LOCATED IN  
THE VILLAGE OF MONEE



IMPROVEMENT ENDS:  
STATION 53+83

IMPROVEMENT BEGINS:  
STATION 15+22.6



FULL SIZE PLANS HAVE BEEN PREPARED USING STANDARD ENGINEERING SCALES. REDUCED SIZED PLANS WILL NOT CONFORM TO STANDARD SCALES. IN MAKING MEASUREMENTS ON REDUCED PLANS, THE ABOVE SCALES MAY BE USED.

J.U.L.I.E.  
JOINT UTILITY LOCATION INFORMATION FOR EXCAVATION  
1-800-892-0123  
OR 811

TRAFFIC DATA  
2007 ADT = 7700  
POSTED SPEED LIMIT: 45-50 MPH

PROJECT ENGINEER: JENPAI CHANG (847) 705-4432  
PROJECT MANAGER: KEN ENG

GROSS AND NET LENGTH OF IMPROVEMENT = 3860.40 FEET = 0.73 MILE

CONTRACT NO. 62658

STATE OF ILLINOIS  
DEPARTMENT OF TRANSPORTATION  
DIVISION OF HIGHWAYS

SUBMITTED August 25, 20 08

*Diana M. O'Keefe*  
DEPUTY DIRECTOR OF HIGHWAYS, REGION ENGINEER

August 29, 20 08  
*Eric E. Harsh*  
Interim ENGINEER OF DESIGN AND ENVIRONMENT

August 29, 20 08  
*Christina M. Reed*  
DIRECTOR OF HIGHWAYS, CHIEF ENGINEER

PRINTED BY THE AUTHORITY  
OF THE STATE OF ILLINOIS