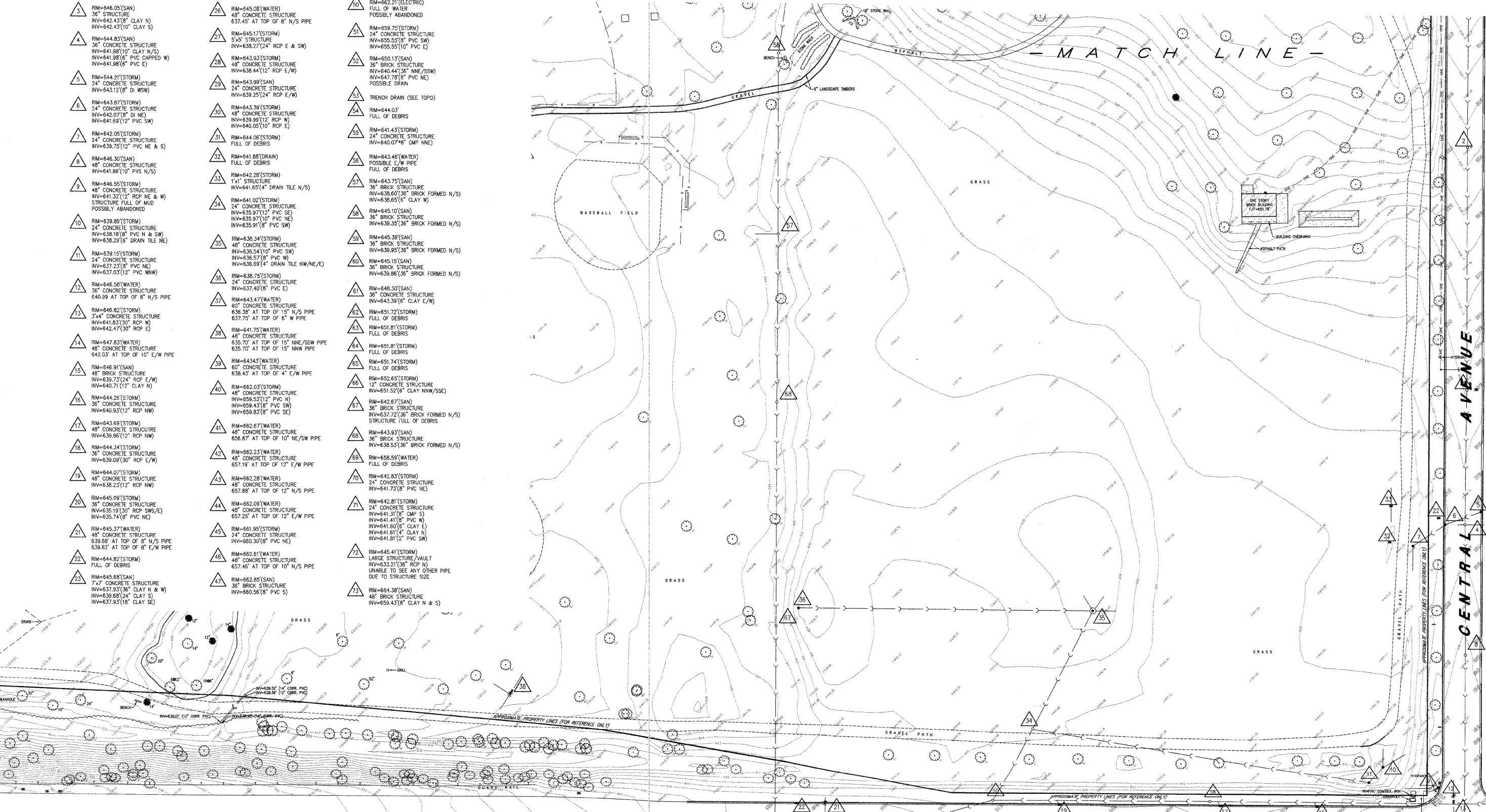


EXISTING UTILITY DATA

- | | | |
|--|---|---|
| 1 RIM=656.36'(SAN)
36" BRICK STRUCTURE
INV=651.92'(8" CLAY N, S, W, NE)
INV=651.92'(8" CLAY CAPPED NW) | 24 RIM=645.16'(STORM)
48" CONCRETE STRUCTURE
INV=640.94'(12" RCP SW) | 48 RIM=661.82'(STORM)
24" CONCRETE STRUCTURE
INV=660.52'(8" PVC NW) |
| 2 RIM=650.52'(SAN)
36" BRICK STRUCTURE
INV=646.34'(8" CLAY N/S) | 25 RIM=645.81'(STORM)
36" CONCRETE STRUCTURE
INV=636.13'(30" RCP WSW/E/NE)
INV=640.31'(12" RCP NE) | 49 RIM=662.81'(WATER)
48" CONCRETE STRUCTURE
657.16' AT TOP OF 12" E/W PIPE |
| 3 RIM=646.05'(SAN)
36" STRUCTURE
INV=642.43'(8" CLAY N)
INV=642.43'(10" CLAY S) | 26 RIM=645.08'(WATER)
48" CONCRETE STRUCTURE
637.45' AT TOP OF 8" N/S PIPE | 50 RIM=662.21'(ELECTRIC)
FULL OF WATER
POSSIBLY ABANDONED |
| 4 RIM=644.83'(SAN)
36" CONCRETE STRUCTURE
INV=641.98'(10" CLAY N/S)
INV=641.98'(6" PVC CAPPED W)
INV=641.98'(6" PVC E) | 27 RIM=645.17'(STORM)
5x8" STRUCTURE
INV=638.27'(24" RCP E & SW) | 51 RIM=659.75'(STORM)
24" CONCRETE STRUCTURE
INV=655.55'(8" PVC SW)
INV=655.55'(10" PVC E) |
| 5 RIM=644.21'(STORM)
24" CONCRETE STRUCTURE
INV=643.12'(8" DI WSW) | 28 RIM=643.93'(STORM)
48" CONCRETE STRUCTURE
INV=638.44'(12" RCP E/W) | 52 RIM=650.13'(SAN)
36" BRICK STRUCTURE
INV=640.44'(36" NNE/SSW)
INV=647.78'(8" PVC NE)
POSSIBLE DRAIN |
| 6 RIM=643.87'(STORM)
24" CONCRETE STRUCTURE
INV=642.07'(8" DI NE)
INV=641.69'(12" PVC SW) | 29 RIM=643.99'(SAN)
24" CONCRETE STRUCTURE
INV=639.25'(24" RCP E/W) | 53 TRENCH DRAIN (SEE TOPO) |
| 7 RIM=642.05'(STORM)
24" CONCRETE STRUCTURE
INV=639.75'(12" PVC NE & S) | 30 RIM=643.39'(STORM)
48" CONCRETE STRUCTURE
INV=639.99'(12" RCP W)
INV=640.05'(10" RCP E) | 54 RIM=644.03'
FULL OF DEBRIS |
| 8 RIM=646.30'(SAN)
48" CONCRETE STRUCTURE
INV=641.86'(10" PVC N/S) | 31 RIM=644.06'(STORM)
FULL OF DEBRIS | 55 RIM=641.43'(STORM)
24" CONCRETE STRUCTURE
INV=640.07'(8" CMP NNE) |
| 9 RIM=646.55'(STORM)
48" CONCRETE STRUCTURE
INV=641.32'(12" RCP NE & W)
STRUCTURE FULL OF MUD
POSSIBLY ABANDONED | 32 RIM=641.85'(DRAIN)
FULL OF DEBRIS | 56 RIM=643.48'(WATER)
POSSIBLE E/W PIPE
FULL OF DEBRIS |
| 10 RIM=638.89'(STORM)
24" CONCRETE STRUCTURE
INV=638.18'(8" PVC N & SW)
INV=638.29'(6" DRAIN TILE NE) | 33 RIM=642.28'(STORM)
1x1" STRUCTURE
INV=641.65'(4" DRAIN TILE N/S) | 57 RIM=643.75'(SAN)
36" BRICK STRUCTURE
INV=638.60'(36" BRICK FORMED N/S)
INV=638.65'(8" CLAY W) |
| 11 RIM=639.15'(STORM)
24" CONCRETE STRUCTURE
INV=637.23'(8" PVC NE)
INV=637.03'(12" PVC WNW) | 34 RIM=641.02'(STORM)
24" CONCRETE STRUCTURE
INV=635.97'(12" PVC SW)
INV=635.97'(10" PVC NE)
INV=635.91'(8" PVC SW) | 58 RIM=645.10'(SAN)
36" BRICK STRUCTURE
INV=639.35'(36" BRICK FORMED N/S) |
| 12 RIM=646.58'(WATER)
36" CONCRETE STRUCTURE
640.99 AT TOP OF 8" N/S PIPE | 35 RIM=638.34'(STORM)
48" CONCRETE STRUCTURE
INV=636.54'(10" PVC SW)
INV=635.57'(8" PVC W)
INV=638.69'(4" DRAIN TILE NW/NE/E) | 59 RIM=645.38'(SAN)
36" BRICK STRUCTURE
INV=639.95'(36" BRICK FORMED N/S) |
| 13 RIM=646.82'(STORM)
3x4" CONCRETE STRUCTURE
INV=641.83'(30" RCP W)
INV=642.47'(30" RCP E) | 36 RIM=638.75'(STORM)
24" CONCRETE STRUCTURE
INV=637.40'(8" PVC E) | 60 RIM=645.15'(SAN)
36" BRICK STRUCTURE
INV=639.86'(36" BRICK FORMED N/S) |
| 14 RIM=647.83'(WATER)
48" CONCRETE STRUCTURE
642.03' AT TOP OF 10" E/W PIPE | 37 RIM=643.47'(WATER)
60" CONCRETE STRUCTURE
638.38' AT TOP OF 15" N/S PIPE
637.75' AT TOP OF 6" W PIPE | 61 RIM=648.30'(SAN)
36" CONCRETE STRUCTURE
INV=643.39'(6" CLAY E/W) |
| 15 RIM=646.91'(SAN)
48" BRICK STRUCTURE
INV=639.73'(24" RCP E/W)
INV=640.71'(12" CLAY N) | 38 RIM=641.75'(WATER)
48" CONCRETE STRUCTURE
635.70' AT TOP OF 15" NNE/SSW PIPE
635.70' AT TOP OF 15" NNW PIPE | 62 RIM=651.72'(STORM)
FULL OF DEBRIS |
| 16 RIM=644.26'(STORM)
36" CONCRETE STRUCTURE
INV=640.93'(12" RCP NW) | 39 RIM=643.43'(WATER)
60" CONCRETE STRUCTURE
638.45' AT TOP OF 4" E/W PIPE | 63 RIM=651.81'(STORM)
FULL OF DEBRIS |
| 17 RIM=643.69'(STORM)
48" CONCRETE STRUCTURE
INV=639.96'(12" RCP NW) | 40 RIM=662.03'(STORM)
48" CONCRETE STRUCTURE
INV=659.53'(12" PVC N)
INV=659.43'(8" PVC SW)
INV=659.83'(8" PVC SE) | 64 RIM=651.81'(STORM)
FULL OF DEBRIS |
| 18 RIM=644.34'(STORM)
36" CONCRETE STRUCTURE
INV=639.09'(30" RCP E/W) | 41 RIM=662.67'(WATER)
48" CONCRETE STRUCTURE
656.87' AT TOP OF 10" NE/SW PIPE | 65 RIM=651.74'(STORM)
FULL OF DEBRIS |
| 19 RIM=644.07'(STORM)
48" CONCRETE STRUCTURE
INV=638.23'(12" RCP NW) | 42 RIM=662.23'(WATER)
48" CONCRETE STRUCTURE
657.88' AT TOP OF 12" N/S PIPE | 66 RIM=652.65'(STORM)
12" CONCRETE STRUCTURE
INV=651.52'(6" CLAY NNW/SSE) |
| 20 RIM=645.09'(STORM)
36" CONCRETE STRUCTURE
INV=635.19'(30" RCP SWS/E)
INV=635.74'(8" PVC NE) | 43 RIM=662.28'(WATER)
48" CONCRETE STRUCTURE
657.88' AT TOP OF 12" N/S PIPE | 67 RIM=642.67'(SAN)
36" BRICK STRUCTURE
INV=637.72'(36" BRICK FORMED N/S)
STRUCTURE FULL OF DEBRIS |
| 21 RIM=645.37'(WATER)
48" CONCRETE STRUCTURE
639.68' AT TOP OF 8" N/S PIPE
639.62' AT TOP OF 8" E/W PIPE | 44 RIM=662.09'(WATER)
48" CONCRETE STRUCTURE
657.25' AT TOP OF 12" E/W PIPE | 68 RIM=643.93'(SAN)
36" BRICK STRUCTURE
INV=638.53'(36" BRICK FORMED N/S) |
| 22 RIM=644.82'(STORM)
FULL OF DEBRIS | 45 RIM=661.95'(STORM)
24" CONCRETE STRUCTURE
INV=660.30'(8" PVC NE) | 69 RIM=658.59'(WATER)
FULL OF DEBRIS |
| 23 RIM=645.68'(SAN)
7x7" CONCRETE STRUCTURE
INV=637.93'(36" CLAY N & W)
INV=639.69'(24" CLAY S)
INV=637.93'(18" CLAY SE) | 46 RIM=662.61'(WATER)
48" CONCRETE STRUCTURE
657.46' AT TOP OF 10" N/S PIPE | 70 RIM=642.83'(STORM)
24" CONCRETE STRUCTURE
INV=641.73'(8" PVC NE) |
| | 47 RIM=662.85'(SAN)
36" BRICK STRUCTURE
INV=660.56'(8" PVC S) | 71 RIM=642.81'(STORM)
24" CONCRETE STRUCTURE
INV=641.31'(8" CMP S)
INV=641.41'(8" PVC W)
INV=641.60'(6" CLAY E)
INV=641.61'(4" CLAY N)
INV=641.81'(2" PVC SW) |
| | | 72 RIM=645.41'(STORM)
LARGE STRUCTURE/VAULT
INV=633.21'(36" RCP N)
UNABLE TO SEE ANY OTHER PIPE
DUE TO STRUCTURE SIZE |
| | | 73 RIM=664.38'(SAN)
48" BRICK STRUCTURE
INV=659.43'(8" CLAY N & S) |

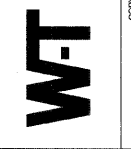
TOPOGRAPHIC MAP



FIELD ENGINEER: MARILIN SOLOMON 847-705-4407

BY	DATE	REVISIONS
	1/29/08	ADDED ADDITIONAL UTILITY AT THE CORNER OF SITE
	6/13/08	ADDED PROPERTY LINES FOR REFERENCE ONLY

W-T LAND SURVEYING, INC.
 LAND AND CONSTRUCTION SURVEYORS
 2876 Primm Avenue
 Naperville, IL 60563
 PH: (224) 393-6333 FAX: (224) 393-9444
 www.wtsurveying.com
 IL License No.: 184-004387 Exp. 04/30/07



SPRING ROCK PARK
(WEST SIDE)
WESTERN SPRINGS, ILLINOIS

TOPOGRAPHIC MAP

LEGEND

<ul style="list-style-type: none"> PROPERTY LINE CENTER LINE EASEMENT LINE BUILDING SETBACK MEASURED DATA RECORD DATA CALCULATED DATA TOP OF (CURB/WALL, ETC.) SPOT GRADE SECTION OF (DRAIN, GUTTER/CHANNEL) CONCRETE EVERGREEN/STAND. TREE SHRUB MONITOR WELL GAS VALVE 	<ul style="list-style-type: none"> TYPICAL SIGN FLARED END SECTION CLOSED MANHOLE OPEN GRATE MANHOLE BEDDING GRATE MANHOLE QUITTER FRAME VALVE VAULT FIRE HYDRANT B-BOX / SERVICE VALVE POST LIGHT, GROUND LIGHT AREA LIGHT STREET LIGHT TRAFFIC SIGNAL POLE ARM SIGNAL HANDHOLE (electric/traffic) POST ELECTRIC METER PEDESTAL (teleco, elec, cable) UTILITY POLE 	<ul style="list-style-type: none"> TELEPHONE VAULT GUARDRAIL GUY WIRE ANCHOR CONTOUR LINE TREE LINE / HEDGE LINE EDGE GRAVEL/STONE FENCE LINE STORM SEWER SANITARY SEWER COMBO SEWER WATER SERVICE LINE WATERMAIN OVERHEAD ELEC. LINE OVERHEAD TELECO LINE GAS LINE U.G. TELECO LINE U.G. ELECTRIC LINE UTILITY MARKINGS (WATER, GAS, ELEC, ETC.)
---	--	---



- NOTES:**
- ONSITE BENCHMARK -- SOUTH FLANGE BOLT OF FIRE HYDRANT LOCATED 522 FEET SOUTH OF THE INTERSECTION OF CENTRAL AVENUE & BURLINGTON AVENUE, WEST SIDE OF CENTRAL AVENUE. ELEVATION=661.78
OFFSITE BENCHMARK -- FEMA REFERENCE MARKER RM 466-1, BEING A CHISELED SQUARE ON SIDEWALK ON THE SOUTHEAST CORNER OF 47th STREET BRIDGE OF FLAG CREEK. ELEVATION=655.09
 - THE LOCATION OF UNDERGROUND UTILITIES WAS DETERMINED BY FIELD OBSERVATION AND VISIBLE MARKINGS ONLY.
 - FIELD WORK COMPLETED: 4/4/06
 - PROPERTY LINES SHOWN ARE APPROXIMATE AND FOR REFERENCE ONLY. THEY HAVE NOT BEEN VERIFIED BY A LEGAL DESCRIPTION OR SURVEYOR.

DATE : 4/5/07
 SCALE : 1"=40'
 FIELD WORK: BSA/REM
 DRAWN : MWO
 CHECK : FIM
 JOB : S07056
 SHEET **6** REVISION
 OF 26 SHEETS