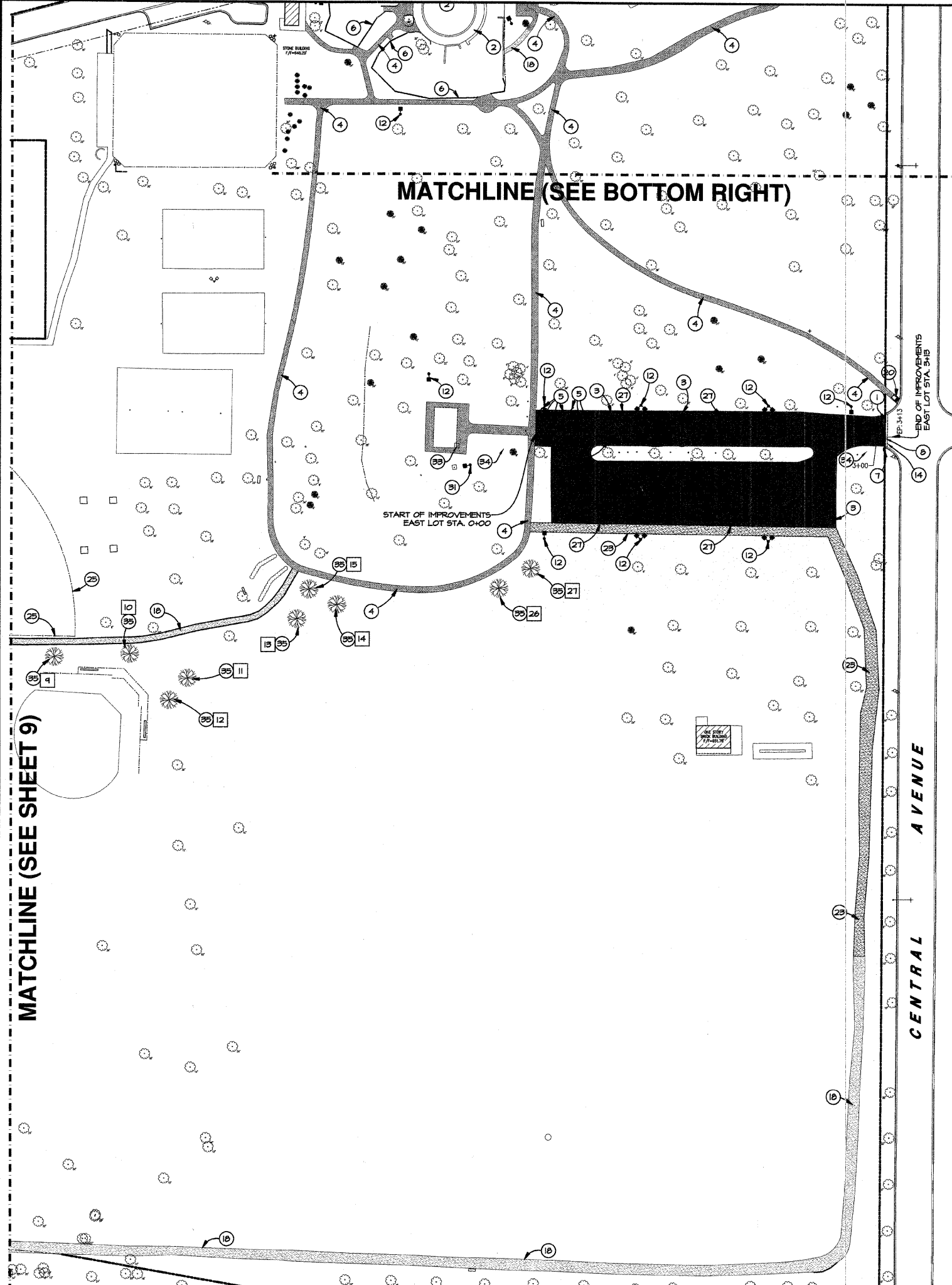


FIELD ENGINEER: MARLIN SOLOMON 847-705-4407



TREE SCHEDULE			
NUMBER	IDOT PAY ITEM NO.	DESCRIPTION	DIAMETER (IN.)
1	A2008024	PRAIRIE PRIDE HACKBERRY	3
2	A2008024	PRAIRIE PRIDE HACKBERRY	3
3	A2008024	PRAIRIE PRIDE HACKBERRY	3
4	A2007824	AMERICAN LINDEN/BASSWOOD	3
5	A2007824	AMERICAN LINDEN/BASSWOOD	3
6	A2006520	SWAMP WHITE OAK	2 1/2
7	A2006520	SWAMP WHITE OAK	2 1/2
8	A2006520	SWAMP WHITE OAK	2 1/2
9	A2007120	RED OAK	2 1/2
10	A2007120	RED OAK	2 1/2
11	A2007624	COMMON BALD CYPRESS	3
12	A2007624	COMMON BALD CYPRESS	3
13	A2007624	COMMON BALD CYPRESS	3
14	A2007624	COMMON BALD CYPRESS	3
15	A2007624	COMMON BALD CYPRESS	3
16	A2008024	PRAIRIE PRIDE HACKBERRY	3
17	A2008024	PRAIRIE PRIDE HACKBERRY	3
18	A2008024	PRAIRIE PRIDE HACKBERRY	3
19	A2007120	RED OAK	2 1/2
20	A2007120	RED OAK	2 1/2
21	A2007120	RED OAK	2 1/2
22	A2007120	RED OAK	2 1/2
23	A2007120	RED OAK	2 1/2
24	A2007624	COMMON BALD CYPRESS	3
25	A2008024	PRAIRIE PRIDE HACKBERRY	3
26	A2008024	PRAIRIE PRIDE HACKBERRY	3
27	A2008024	PRAIRIE PRIDE HACKBERRY	3

**PROJECT NOTES:**

- NEW SAWCUTS - EXISTING PAVEMENT TO BE SAWCUT FULL DEPTH TO PROVIDE CLEAN CONSTRUCTION BREAK. (44215200)
- EXISTING SIDEWALK TO REMAIN
- NEW PAINT PAVEMENT MARKING - LINE 4" (1800110)
- NEW ASPHALT PATHWAY. FOLLOW CONFIGURATION OF THE EXISTING PATHWAY IN LOCATIONS WHERE EXISTING PATHS EXIST. (35100100) & (40603800)
- PAINT PAVEMENT MARKING - LETTERS AND SYMBOLS - NEW HANDICAP, STRIPING, SYMBOL AND SIGN. (18001100)
- EXISTING LANDSCAPE TIMBERS TO REMAIN.
- NEW R-1 STOP SIGN. (12000100)
- PAINT PAVEMENT MARKING - LETTERS AND SYMBOLS - NEW 2' WIDE WHITE PAINTED STOP BAR. (18001100)
- PAINT PAVEMENT MARKING - LETTERS AND SYMBOLS - NEW WHITE PAINTED TRAFFIC ARROWS. (18001100)
- NEW B6.12 CONCRETE CURB AND GUTTER. (60603800)
- NEW SAWCUTS - EXISTING CURB TO BE SAWCUT FULL DEPTH TO PROVIDE CLEAN CONSTRUCTION BREAK. (44215200)
- NEW AREA LIGHT (SEE PHOTOGRAPHIC PLAN FOR DETAILS) (500 ITEM #54558888)
- NEW BASEBALL BACKSTOP. (500 ITEM #81)
- NEW 2" BUTT JOINT. (20007100)
- NEW 5" CURB CUT. (44215200)
- NEW PORTLAND CEMENT CONCRETE SIDEWALK 5". (42400200) & (35100300)
- NEW ASPHALT PAVEMENT. (40603800) & (40603935)
- EXISTING AGGREGATE PATHWAY TO BE RE-SPREAD WITH 2" OF NEW AGGREGATE SCREENINGS. (500 ITEM #16)
- NEW COMBINATION CONCRETE CURB AND GUTTER TYPE B6.12 CURB WITH REVERSE GUTTER FITCH. (60603800)
- NEW CURB RAMPS FOR SIDEWALKS WITH DETECTABLE WARNINGS. (42400200), (35100300) & (42400800)
- EXISTING GRAVEL TO BE REPLACED. CONTRACTOR TO REMOVE EXISTING GRAVEL AND STOCKPILE DURING STORM SEWER INSTALLATION, THEN REPLACE AFTER INSTALLATION IS COMPLETE. (500 ITEM #17)
- NEW 8" CURB CUT. (44215200)
- NEW AGGREGATE PATHWAY. (35100100)
- NEW LOCATION FOR CHAIN LINK FENCE TO BE RELOCATED. (66410410)
- NEW CHAIN LINK FENCE 3' - FOR BASEBALL FIELD. (66400205)
- EXISTING GRAVEL DRIVE FOR SPREADING OF SURFACE MILLINGS.
- NEW CONCRETE WHEEL STOP. (TYP. OF 6)(XXXX03816)
- NEW LANDSCAPE AREA. (1101625 & 25000210)
- EXISTING PAVEMENT TO REMAIN.
- NEW LOCATION OF EXISTING SIGN RELOCATION. (XT240500)
- NEW VANDAL PROOF UPLIGHT. (500 ITEM #10)
- NEW 5" WHITE PAINTED CROSS-WALK. (1800110) & (18001150)
- EXISTING DRINKING FOUNTAIN TO REMAIN.
- APPROXIMATE LOCATION OF WATER MAIN. CONTRACTOR TO USE CAUTION NOT TO DAMAGE WATER MAIN DURING CONSTRUCTION.
- NEW SHADE TREE. (TYP. OF 21) (SEE TREE SCHEDULE FOR DETAILS)

NOTE:  
CONTRACTOR SHALL FOLLOW RECOMMENDATIONS OF THE SOILS ENGINEER FOR SUBGRADE PREPARATION. REFER TO THE SOILS REPORT FOR DETAILS. WHERE IT IS NECESSARY, UNSUITABLE SUBGRADE SHALL BE REMOVED AND FA-2 BACKFILL SHALL BE PLACED. (20201200)

SEE SITE ELECTRICAL PLANS FOR ALL PHOTOMETRIC INFORMATION. ALL PAINTED CURB ON SITE TO BE REPAINTED FOLLOWING RE-PAVING OF THE PARKING LOT. MATCH EXISTING COLOR, REPAINT WITH HIGH QUALITY PAINT. (20036200)

CONTRACTOR AND OWNER TO FIELD CHECK EXISTING CURB PRIOR TO AND FOLLOWING RE-PAVING TO DETERMINE EXTENTS OF THE REMOVAL AND REPLACEMENT OF THE EXISTING CURBS. (44002000) & (60603800)

IN AREAS DESIGNATED TO MATCH THE TOP OF SIDEWALK ELEVATION, THE CONTRACTOR SHALL REMOVE THE EXISTING GRAVEL SIDEWALK AND MATCH THE EXISTING TOP OF SIDEWALK ELEVATION WITH THE NEW PATHWAY. THE NEW PATHWAY SHALL NOT BE RAISED ABOVE THE EXISTING ELEVATION.

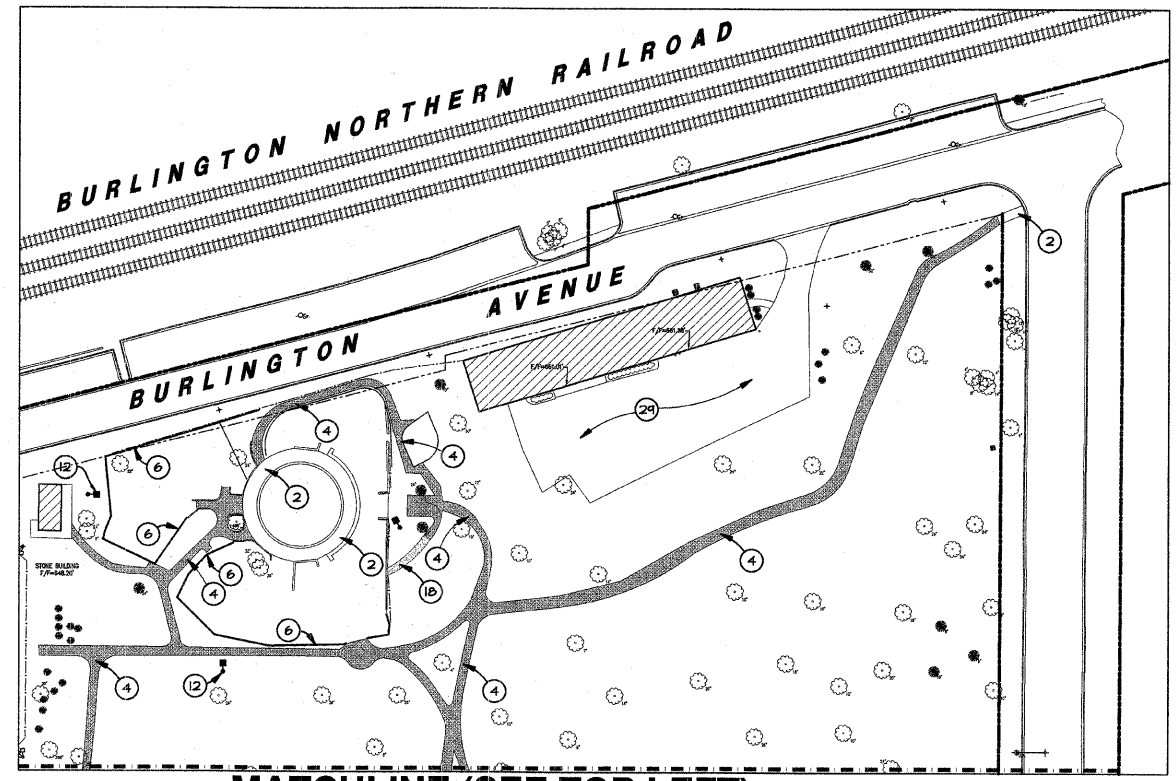
CONTRACTOR TO USE CAUTION WHEN EXCAVATING NEAR EXISTING TELE-CO MAINHOLES AND EXISTING STRUCTURE #18.

MILLINGS FROM RE-PAVING TO BE SPREAD ON NORTH GRAVEL DRIVE. SEE PROJECT NOTE 21 FOR GRAVEL DRIVE LOCATION. COORDINATE WITH OWNER.

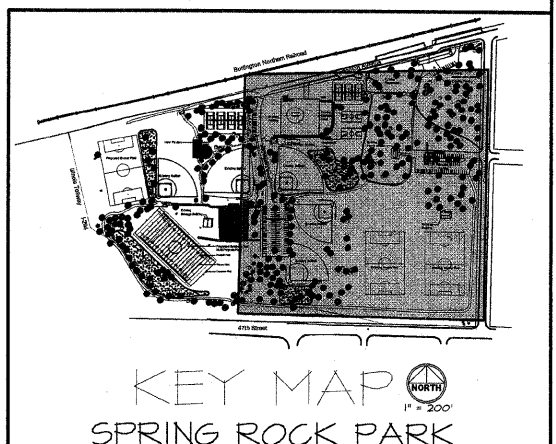
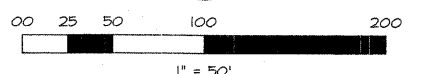
ALL LANDSCAPE AREAS DISTURBED DURING CONSTRUCTION TO HAVE 6" OF TOPSOIL AND CLASS 2A SEED. (21101625) & (25000210)

ALL TREES SHOWN ON THIS PLAN ARE TO REMAIN.

- LEGEND:**
- EXISTING AGGREGATE PATH TO BE RE-SPREAD WITH 2" OF AGGREGATE SCREENINGS. (500 ITEM #16)
  - NEW ASPHALT PAVEMENT. 1-1/2" HMA SURFACE COURSE MIX "C" N50 (40603810) 2-1/4" HMA BINDER COURSE, IL-14.0 N50 (40603800) BITUMINOUS MATERIALS PRIME COAT (40300100) AGGREGATE BASE COURSE, TYPE A 10" (35100400)
  - NEW ASPHALT PATHWAY. 2" HMA SURFACE COURSE MIX "C" N50 (40603810) AGGREGATE BASE COURSE, TYPE A 5" (35100400)
  - NEW AGGREGATE PATHWAY. 3" LIMESTONE SCREENING SURFACE (NEW PATHS) (500 ITEM # 15) AGGREGATE BASE COURSE, TYPE A 8" (35100100)
  - NEW SHADE TREE. (SEE TREE SCHEDULE)



NOTE: SPECIFIC PROJECT NOTE DESCRIPTION TO BE PAID FOR AS THE ITEM NUMBER AND OR IDOT CODE NUMBER LISTED ADJACENT TO THE DESCRIPTION ( ).



FA SITE	SECTION	COUNTY
---	05-P4098-00-PK	COOK
FED. ROAD DIST. NO.	ILLINOIS	CONTRACT NO. 63060

REVISIONS	DATE	BY	JPG
PER IDOT COMMENTS	6-15-08		JPG
PER IDOT COMMENTS	6-24-08		JPG
PER IDOT COMMENTS	7-18-08		JPG
PER IDOT COMMENTS	7-25-08		JPG
PER IDOT COMMENTS	8-4-08		JPG

W-T CIVIL ENGINEERING, LLC.  
CIVIL AND STRUCTURAL ENGINEERS  
2876 Putnam Avenue  
Hoffman Estates, Illinois 60192  
PH: (224) 293-8333 FAX: (224) 293-8444  
www.wtengineering.com  
IL License No.: 184-003492 Exp. 04/30/09

**W-T**

SPRING ROCK PARK  
CENTRAL AVE & 47TH ST  
WESTERN SPRINGS, IL

SITE DEVELOPMENT PLAN

DATE: 05/23/08  
SCALE: 1" = 50'  
DRAWN: JPG  
CHECK: TOA  
JOB: CE06316  
SHEET  
10 OF 26