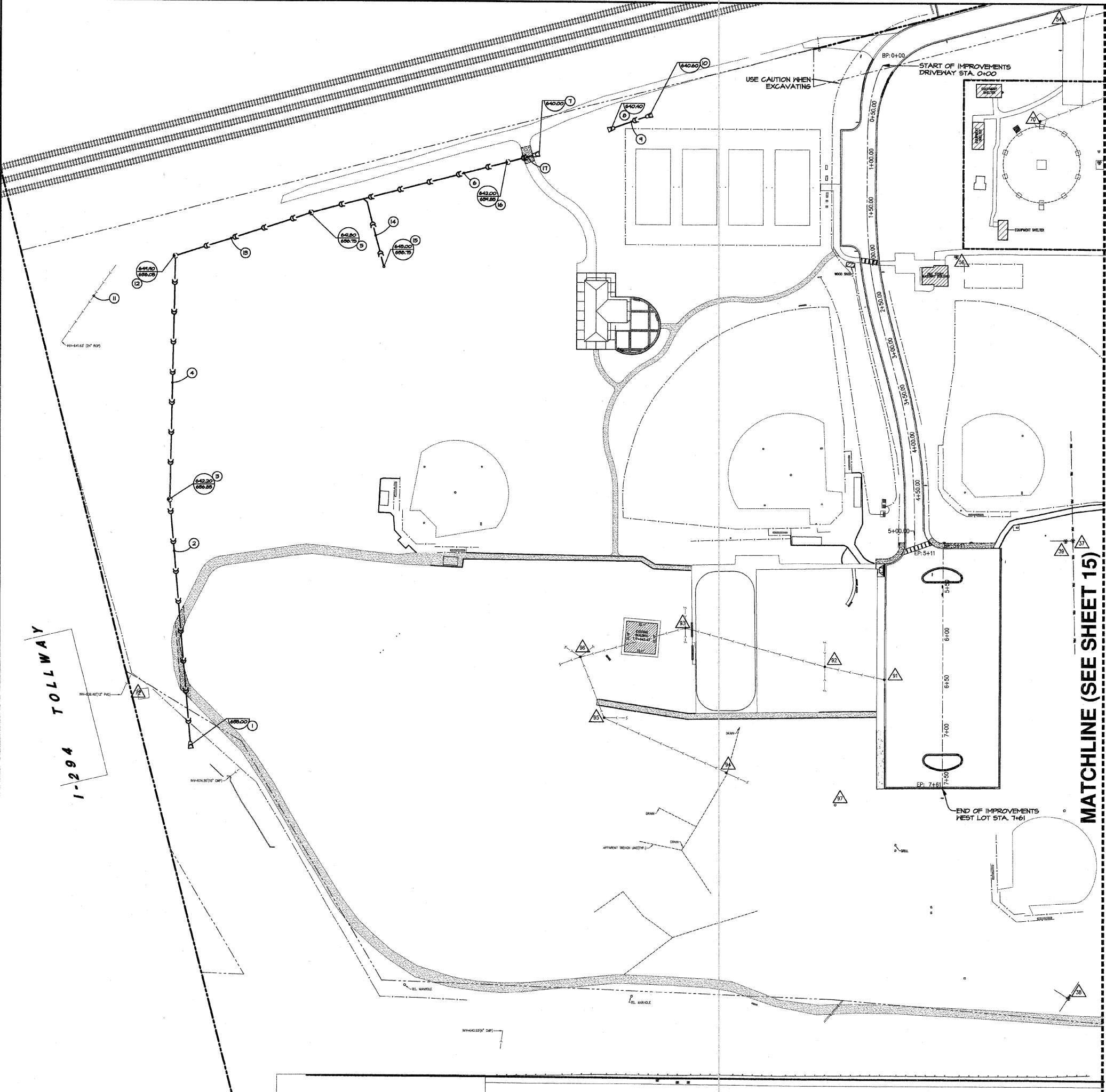


FIELD ENGINEER: MARLIN SOLOMON 847-705-4407

1-294 TOLLWAY



UTILITY LEGEND

- EXISTING STORM SEWER
PROPOSED STORM SEWER
EXISTING SANITARY SEWER
PROPOSED SANITARY SEWER
EXISTING COMBINATION SEWER
PROPOSED COMBINATION SEWER
EXISTING WATER MAIN
PROPOSED WATER MAIN
EXISTING WATER SERVICE
PROPOSED WATER SERVICE
EXISTING ELECTRIC SERVICE
PROPOSED ELECTRIC SERVICE
EXISTING GAS SERVICE
PROPOSED GAS SERVICE
EXISTING TELEPHONE SERVICE
PROPOSED TELEPHONE SERVICE
EXISTING MANHOLE
PROPOSED MANHOLE
EXISTING CATCH BASIN
PROPOSED CATCH BASIN
EXISTING INLET (CURB)
PROPOSED INLET
EXISTING WATER VAULT W/ VALVE
PROPOSED WATER VAULT W/ VALVE
EXISTING B-BOX
PROPOSED B-BOX
EXISTING FIRE HYDRANT
PROPOSED FIRE HYDRANT
PROPOSED AREA LIGHT
PROPOSED RIM ELEVATION
PROPOSED INVERT ELEVATION

STORM SEWER

- 1. PRECAST REINFORCED CONCRETE FLARED END SECTIONS 24" (54213664)
4 GRATING FOR CONCRETE FLARED END SECTION 24" (54241150)
2. STORM SEWER, CLASS A, TYPE I 24", 25' L.F. @ 0.12% SLOPE (550A0120)
CATCH BASIN, TYPE A, 5'-DIAMETER, TYPE B GRATE (60204505)
3. STORM SEWER, CLASS A, TYPE I 24", 255' L.F. @ 0.41% SLOPE (550A0120)
CATCH BASIN, TYPE A, 5'-DIAMETER, TYPE B GRATE (60204505)
4. STORM SEWER, CLASS A, TYPE I 24", 210' L.F. @ 0.52% SLOPE (550A0120)
5. PRECAST REINFORCED CONCRETE FLARED END SECTIONS 24" (54213664)
4 GRATING FOR CONCRETE FLARED END SECTION 24" (54241150)
6. PRECAST REINFORCED CONCRETE FLARED END SECTIONS 24" (54213664)
4 GRATING FOR CONCRETE FLARED END SECTION 24" (54241150)
7. STORM SEWER, CLASS A, TYPE I 24", 40' L.F. @ 0.50% SLOPE (550A0120)
8. PRECAST REINFORCED CONCRETE FLARED END SECTIONS 24" (54213664)
4 GRATING FOR CONCRETE FLARED END SECTION 24" (54241150)
9. EXISTING STORM SEWER TO REMAIN.
CONTRACTOR TO CAP BOTH ENDS WITH CONCRETE.
10. MANHOLE, TYPE A, 5'-DIAMETER, TYPE I FRAME, CLOSED LID (60221100)
11. STORM SEWER, CLASS A, TYPE I 24", 147' L.F. @ 0.41% SLOPE (550A0120)
NEW 6" HDPE UNDERDRAIN, 147' L.F. @ 0.41% SLOPE.
(TO BE PAID FOR AS (60108200))
12. NEW NDS SPEED-D BASIN PART NO. 101 WITH 6" ROUND GRATE PART NO. 10.
(TO BE PAID FOR AS 50Q 180)
13. MANHOLE, TYPE A, 5'-DIAMETER, TYPE B GRATE (60221100)
14. STORM SEWER, CLASS A, TYPE I 24", 30' L.F. @ 0.52% SLOPE (550A0120)
NOTE: CONTRACTOR TO VERIFY LOCATION OF EXISTING UTILITIES IN THE FIELD.

CONTRACTOR TO FIELD CHECK ALL EXISTING STRUCTURES AND PIPES TO VERIFY THERE ARE NO CONFLICTS WITH PROPOSED IMPROVEMENTS. IF CONFLICT EXISTS, CONTRACTOR TO CONTACT SITE ENGINEER IMMEDIATELY.
CONTRACTOR TO USE CAUTION WHEN EXCAVATING IN AREAS NEAR EXISTING UTILITIES.

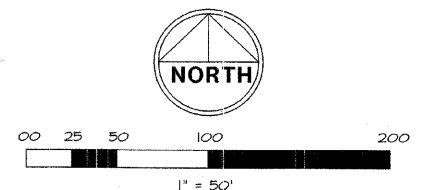
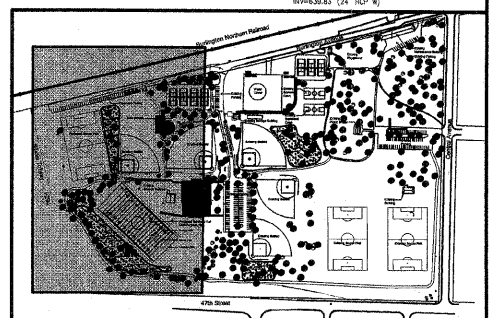


Table with columns: FA RITE, SECTION, COUNTY, FED. ROAD DIST. NO., ILLINOIS CONTRACT NO. 63060

EXISTING UTILITY DATA

Table listing existing utility data with columns: ID, Description, Location, and Notes.

MATCHLINE (SEE SHEET 15)



KEY MAP
1" = 200'
SPRING ROCK PARK

Vertical sidebar containing: W-T CIVIL ENGINEERING, LLC. logo; project name: SPRING ROCK PARK; address: CENTRAL AVE & 47TH ST, WESTERN SPRINGS, IL; date: 05/23/08; scale: 1" = 50'; drawn: JFG; checked: TOA; job: CE06316; sheet: 14 OF 26.