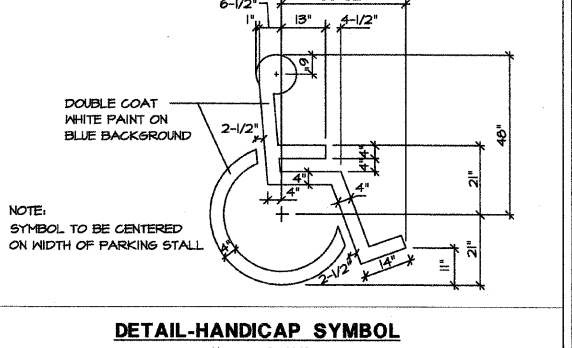
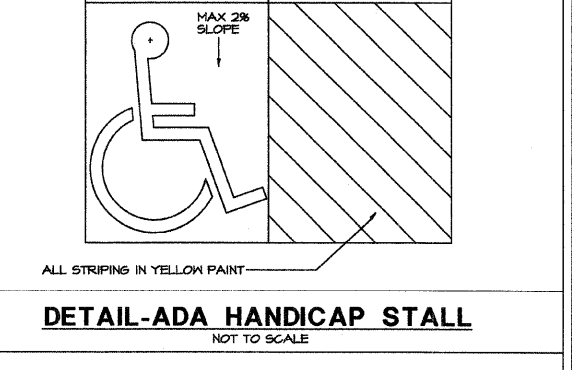
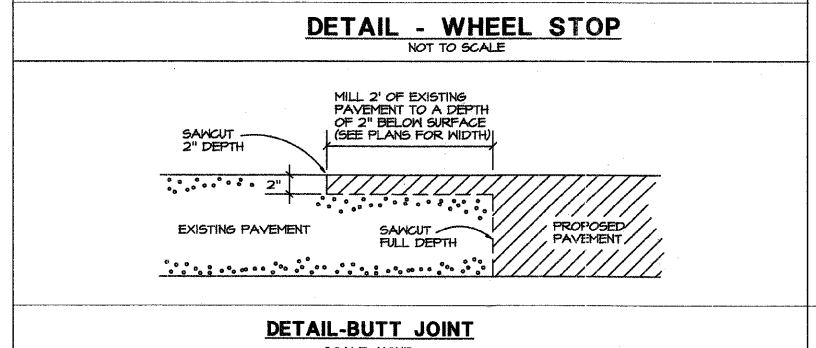
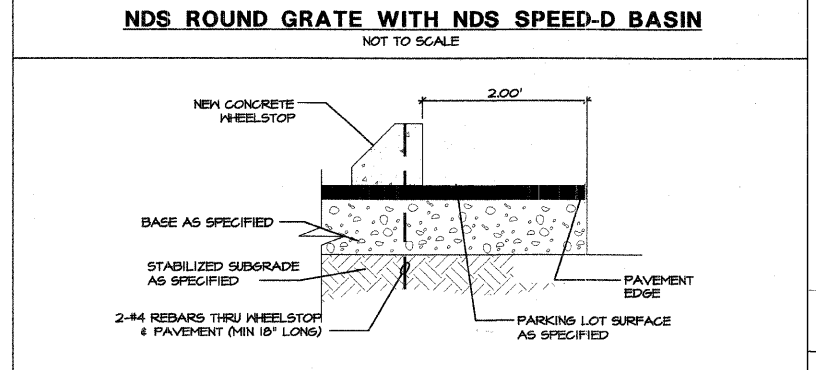
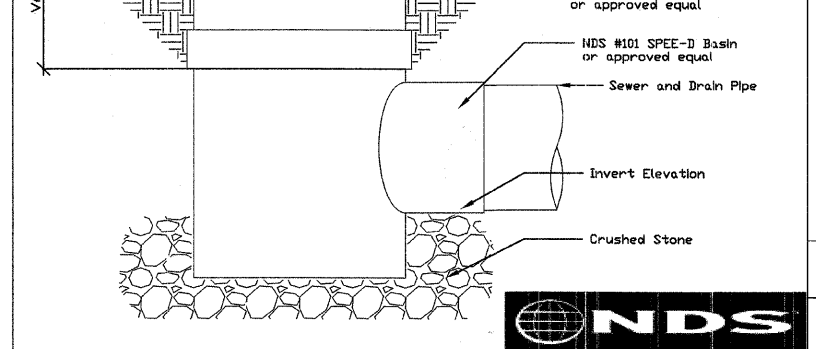
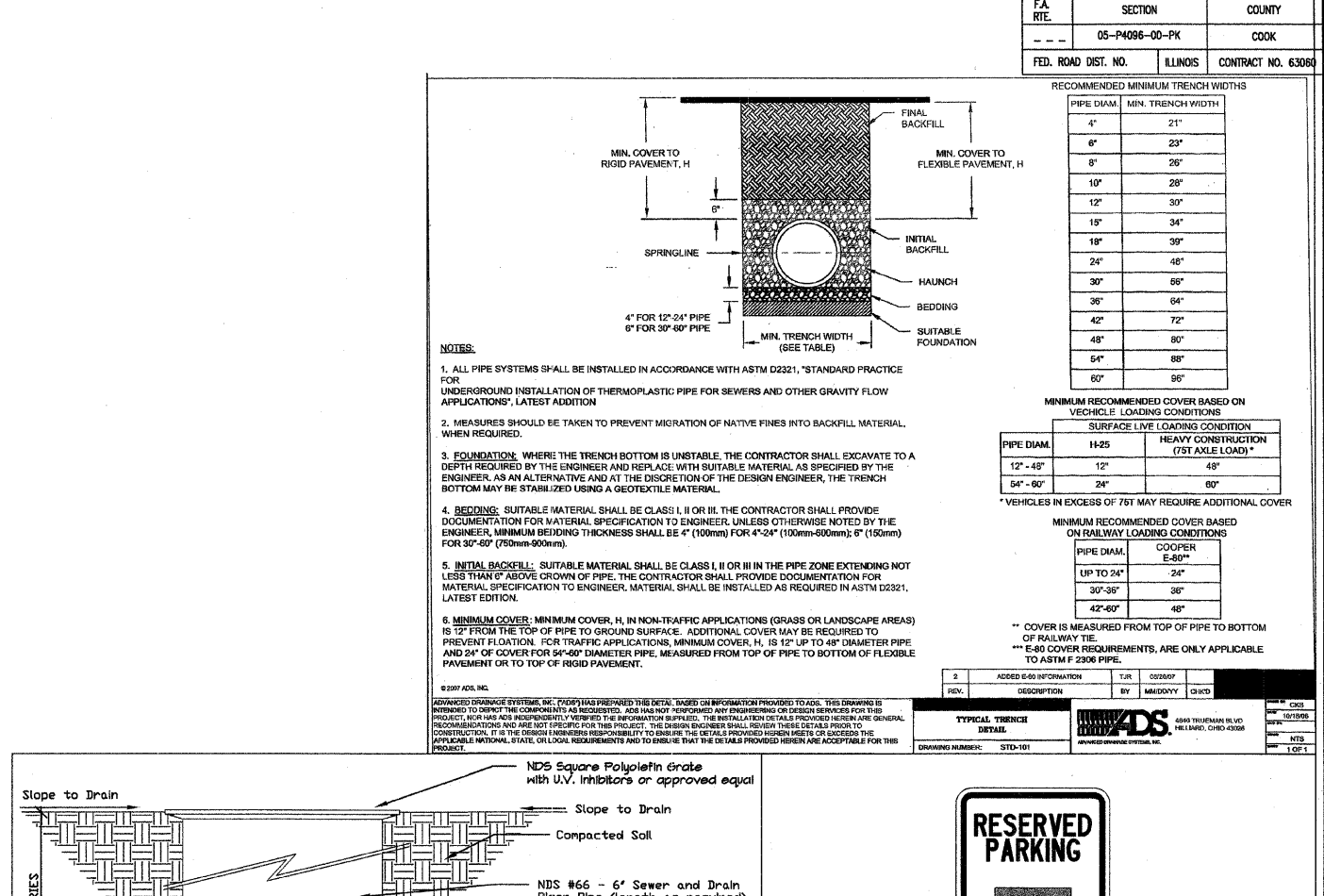
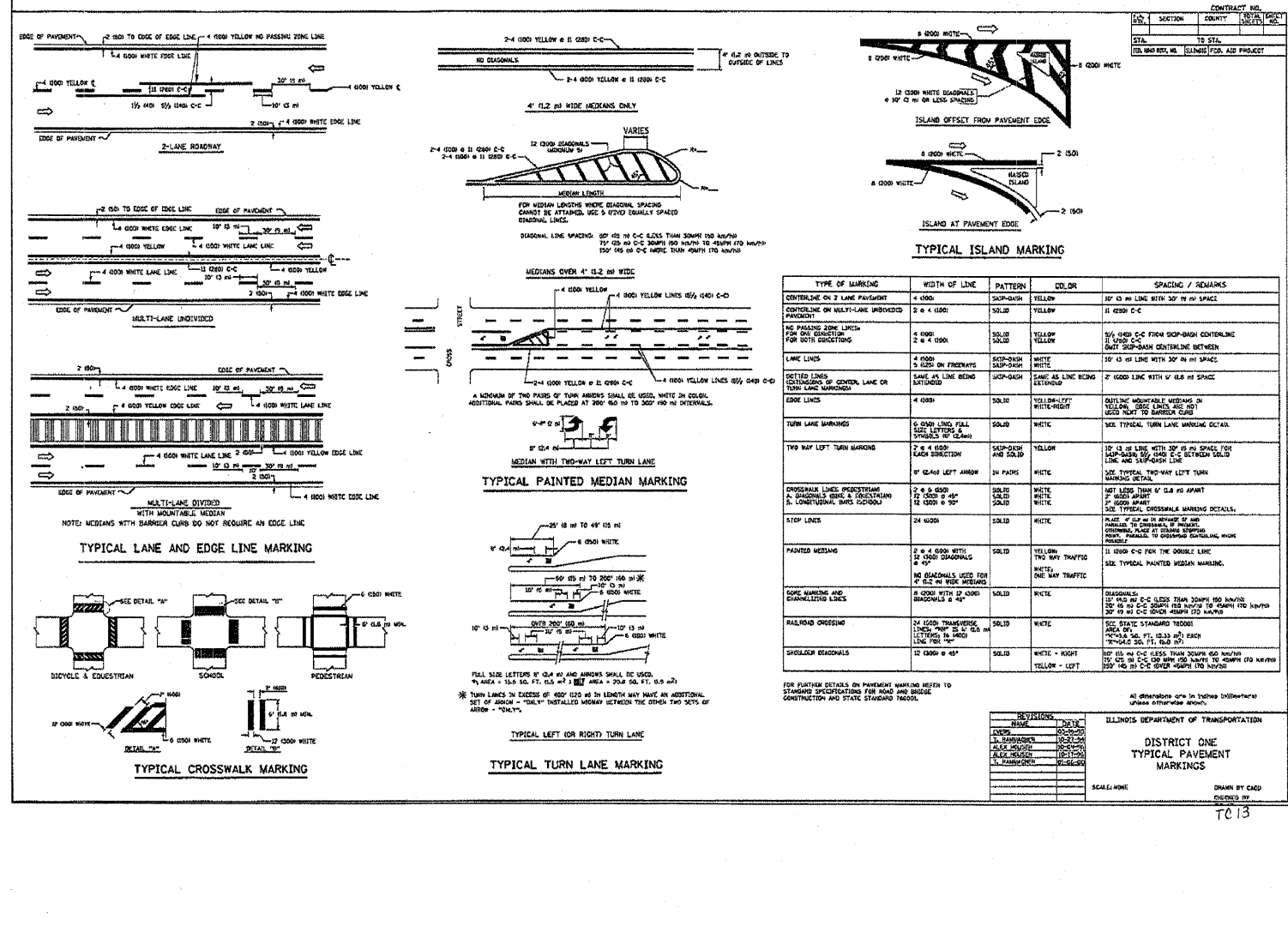
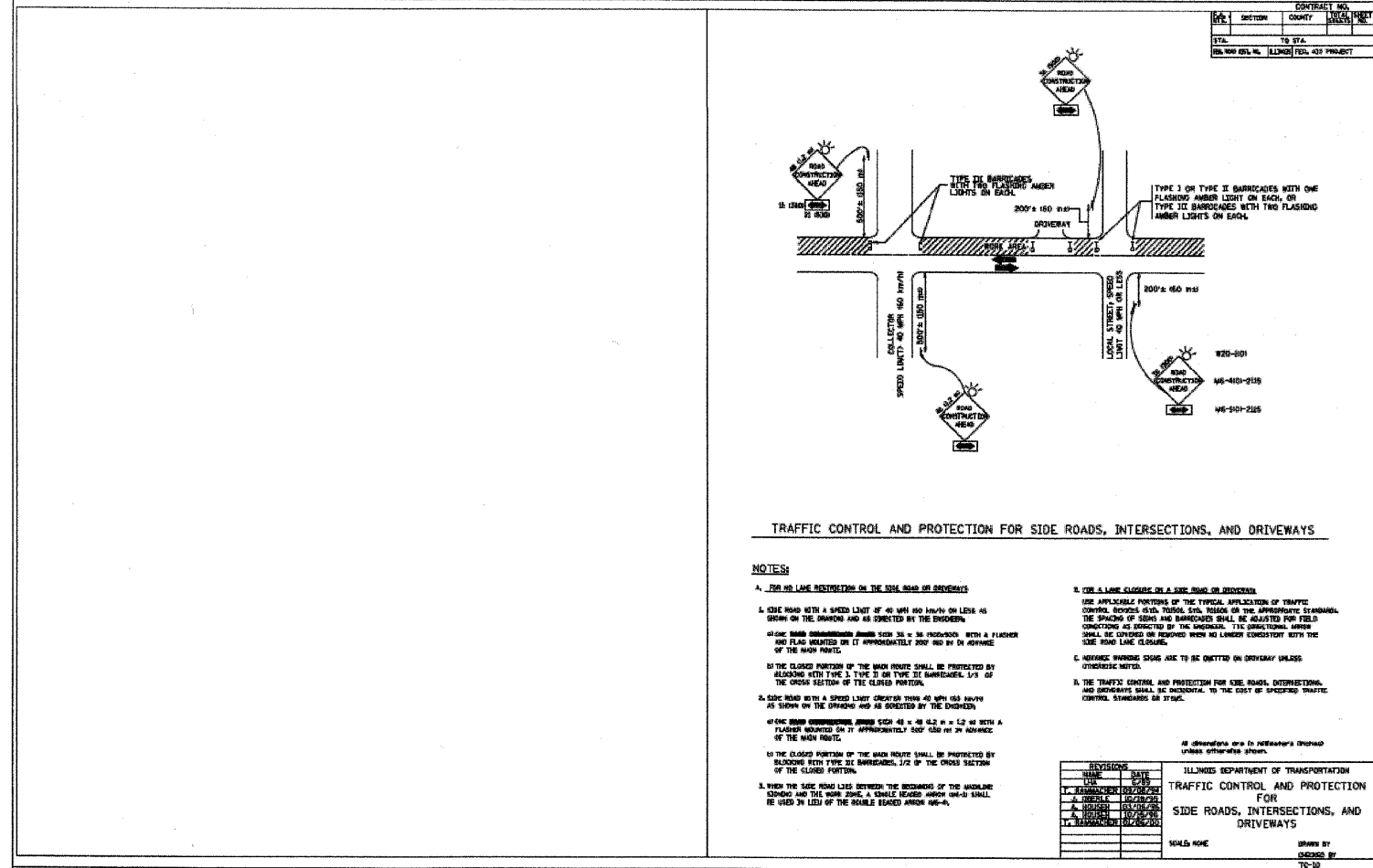


FIELD ENGINEER: MARLIN SOLOMON 847-705-4407



FA. RITE.	SECTION	COUNTY
05-P4096-00-PK		COOK
FED. ROAD DIST. NO.	ILLINOIS	CONTRACT NO. 63090

DATE	BY	REVISIONS
6-15-08	JFG	PER IDOT COMMENTS
6-24-08	JFG	PER IDOT COMMENTS
7-18-08	JFG	PER IDOT COMMENTS
7-25-08	JFG	PER IDOT COMMENTS

W-T CIVIL ENGINEERING, L.L.C.
CIVIL AND STRUCTURAL ENGINEERS

2875 E. Graham Avenue
Hoffman Estates, IL 60130
PH: (224) 283-8333 FAX: (224) 283-8444
www.wtengineering.com

IL License No.: 184-003492 Exp: 04/30/09

W-T

SPRING ROCK PARK
CENTRAL AVE & 47TH ST
WESTERN SPRINGS, IL

DETAILS

DATE: 05/23/08
SCALE: 1" = 50'
DRAWN: JFG
CHECK: TOA
JOB: CE06316
SHEET: 25 OF 26