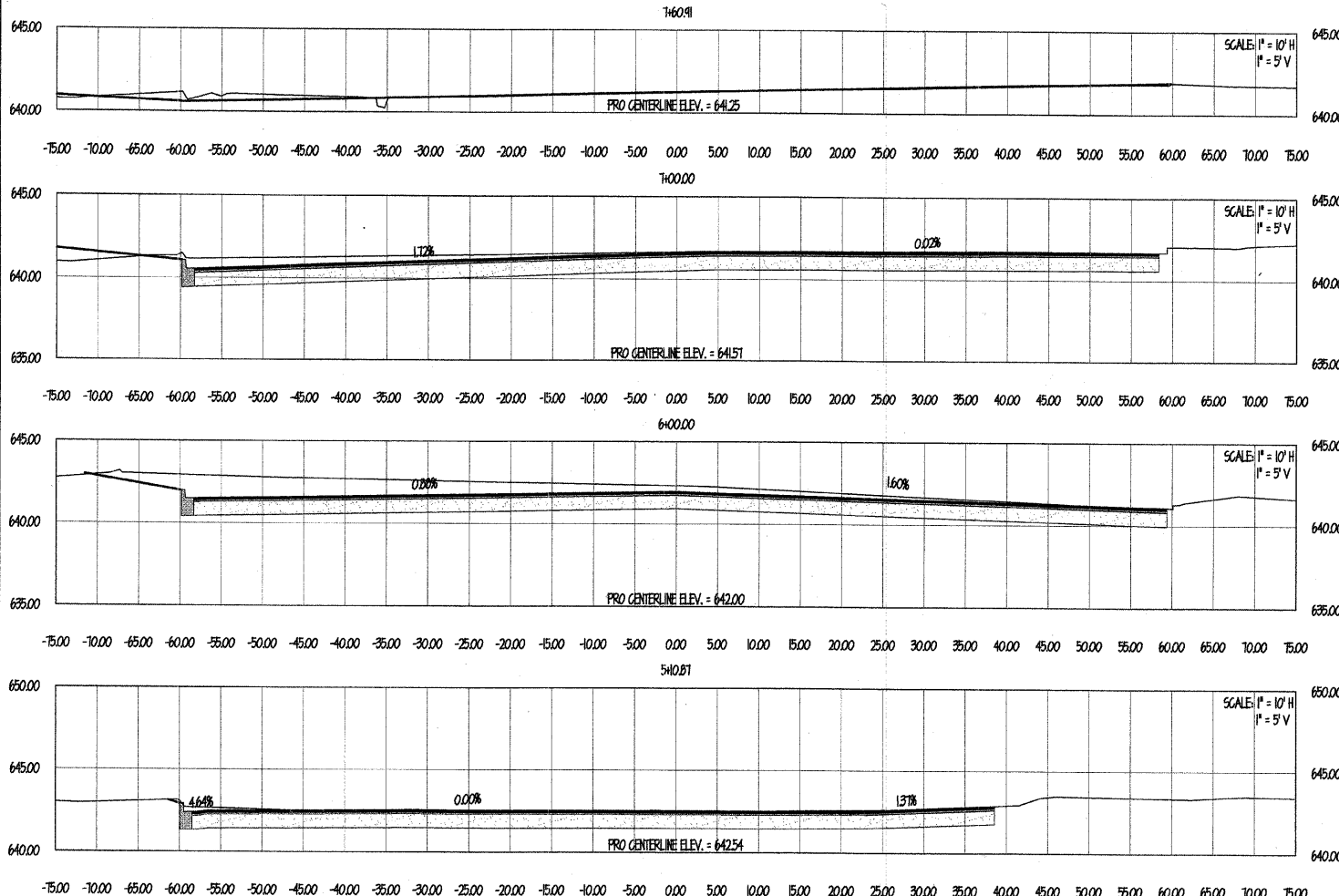
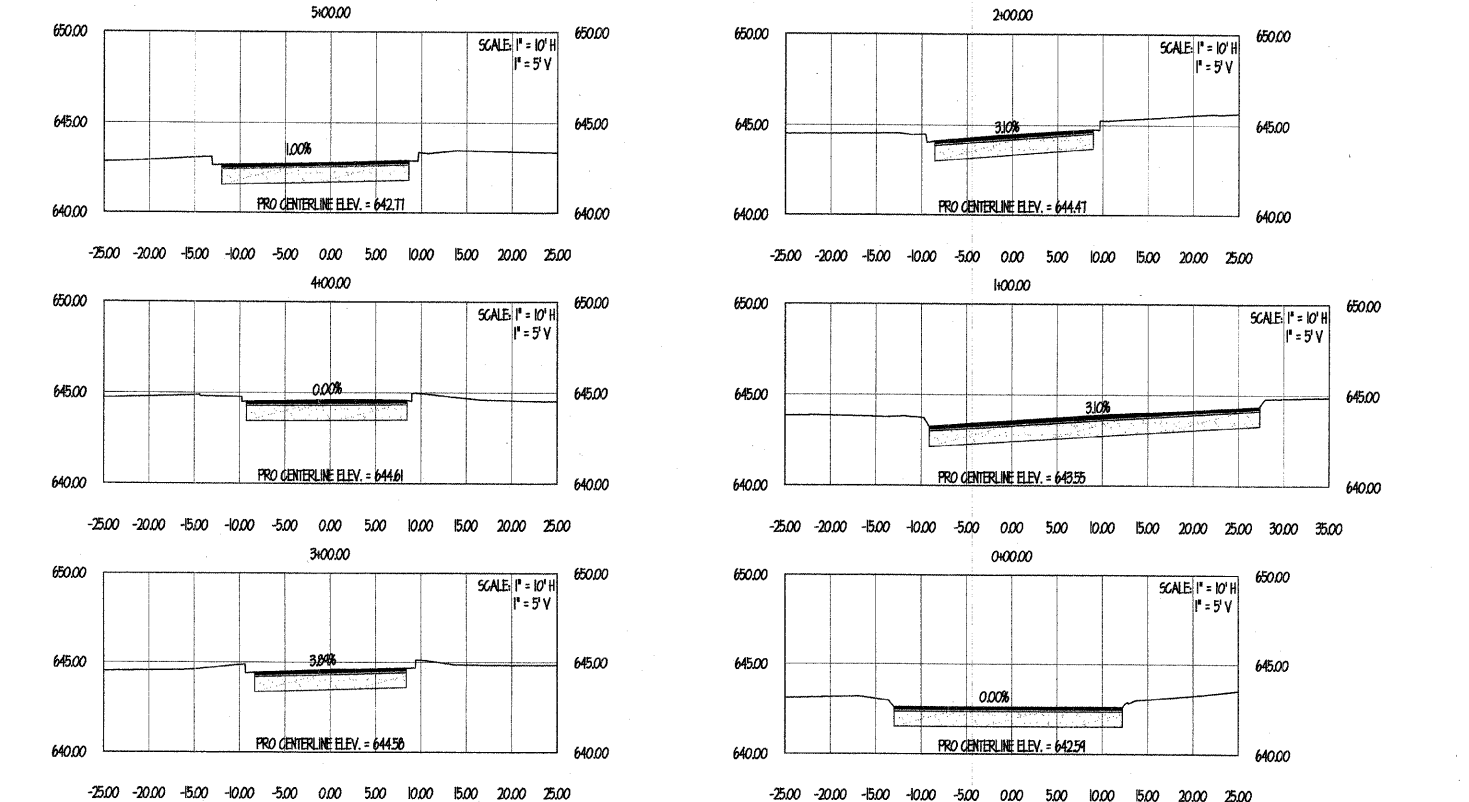


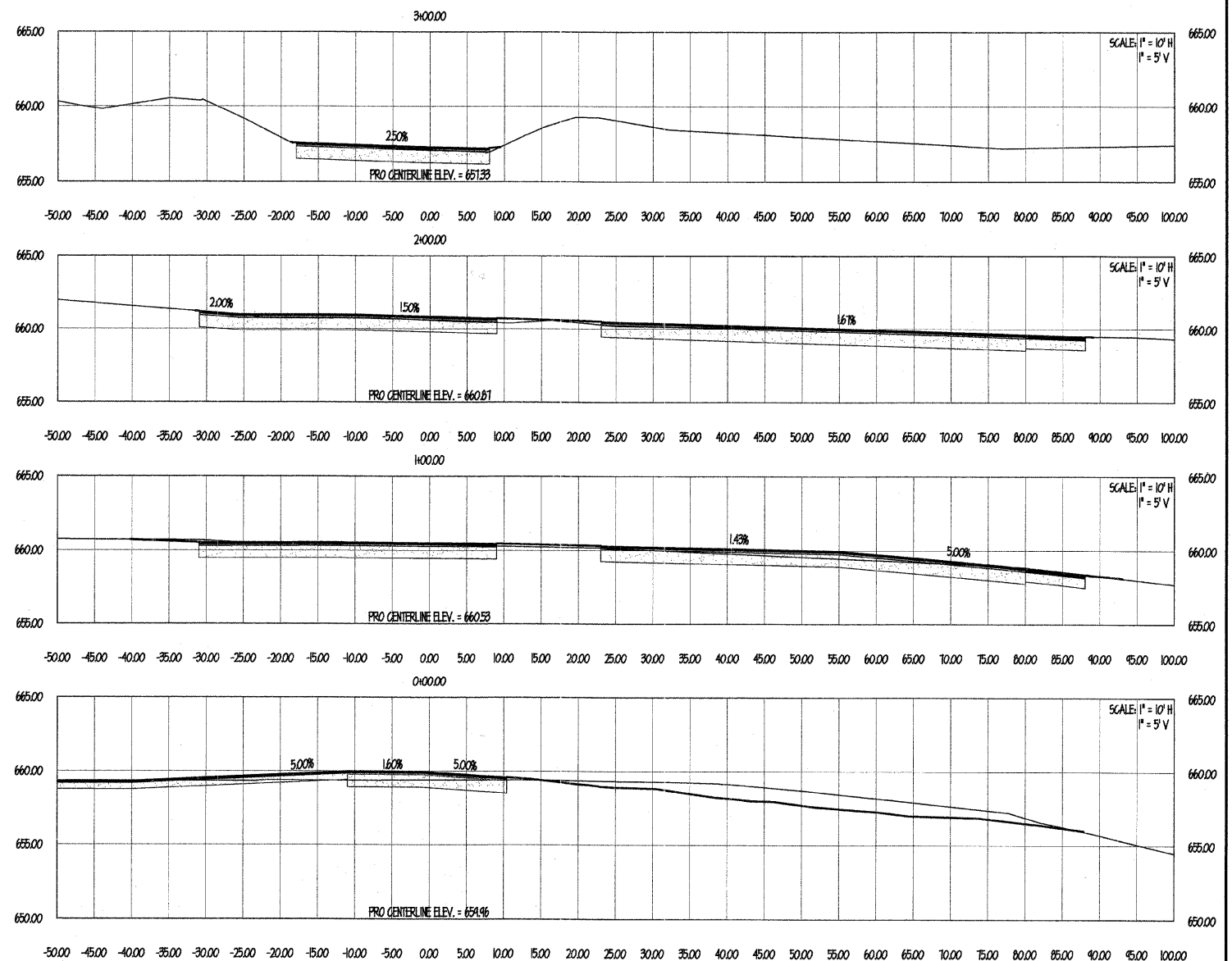
WEST LOT



DRIVEWAY



EAST LOT



NOTE: EXISTING PAVEMENT TO BE REMOVED AND REPLACED.
SEE GEOTECHNICAL REPORT FOR DETAILS.

F.A. RTE.	SECTION	COUNTY
---	05-P4086-00-PK	COOK
FED. ROAD DIST. NO.	ILLINOIS	CONTRACT NO. 63060

BY:	DATE	REVISIONS
JPG	6-18-08	PER IDOT COMMENTS
JPG	6-24-08	PER IDOT COMMENTS
JPG	7-18-08	PER IDOT COMMENTS
JPG	7-25-08	PER IDOT COMMENTS

W-T CIVIL ENGINEERING, LLC.
CIVIL AND STRUCTURAL ENGINEERS
2875 Pratum Avenue
Hoffman Estates, Illinois 60182
PH: (224) 295-6833 FAX: (224) 295-6444
www.wtengineering.com
IL License No.: 184-003492 Exp: 04/30/09

W-T

SPRING ROCK PARK
CENTRAL AVE & 47TH ST
WESTERN SPRINGS, IL

CROSS SECTION SHEET

DATE:	05/23/08
SCALE:	1" = 50'
DRAWN:	JPG
CHECK:	TOA
JOB:	CE06316
SHEET	26 OF 26

FIELD ENGINEER: MARILIN SOLOMON 847-705-4407