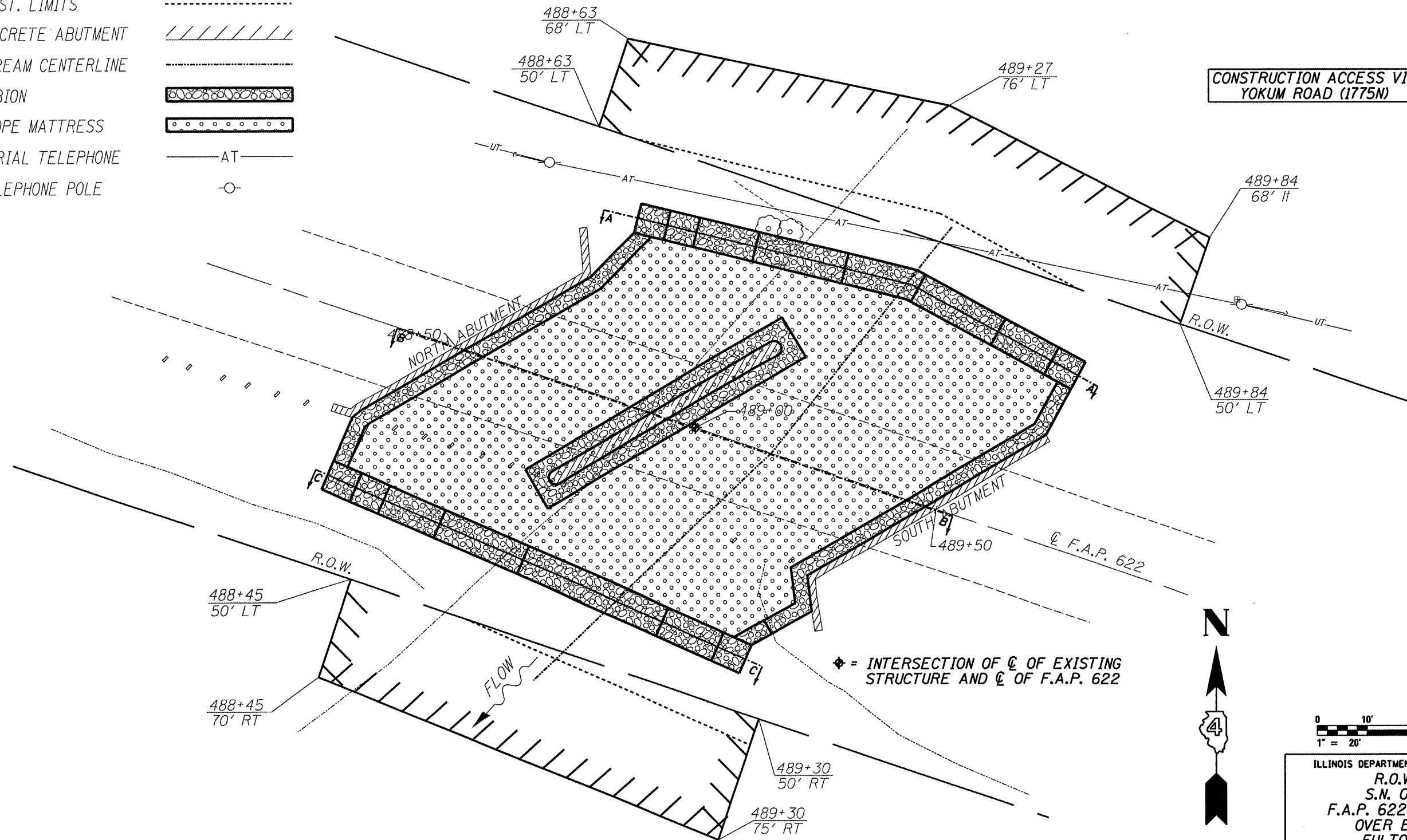


# LEGEND

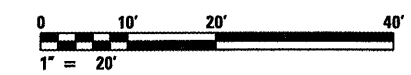
- EXIST. R.O.W. LINE
- TEMPORARY EASEMENT
- CONST. LIMITS
- CONCRETE ABUTMENT
- STREAM CENTERLINE
- GABION
- SLOPE MATTRESS
- AERIAL TELEPHONE
- TELEPHONE POLE

ROUTE NO.	SECTION	COUNTY	TOTAL SHEETS	SHEET NO.
VAR	*	VAR	66	17
FED. ROAD DIST. NO. 4		ILLINOIS	FED. AID PROJECT	

**\* D4 SCOUR MITIGATION 2006**



CONSTRUCTION ACCESS VIA  
YOKUM ROAD (1775N)



ILLINOIS DEPARTMENT OF TRANSPORTATION  
R.O.W. PLAN  
S.N. 029-0027  
F.A.P. 622 (IL. RTE. 97)  
OVER BIG CREEK  
FULTON COUNTY  
SHEET 2 OF 8