

BENCHMARK: BLACK MARKED SQUARE ON SE WINGWALL
ELEV. = 100.00

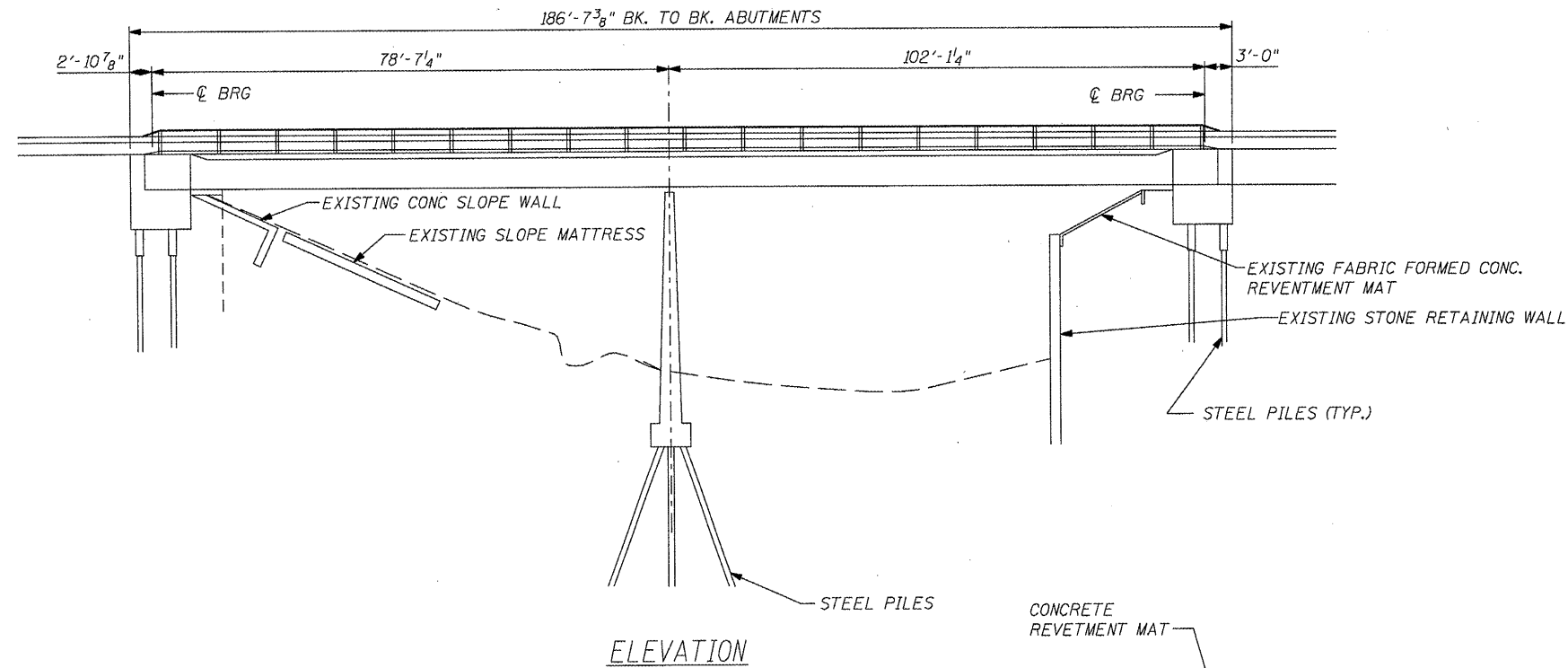
EXISTING STRUCTURE: SN 029-0053 IS A 38'-0" WIDE x 186'-7" LONG R.C. DECK WITH WELDED PLATE GIRDER SUPERSTRUCTURE WITH R.C. CLOSED ABUTMENTS.

ROUTE NO.	SECTION	COUNTY	TOTAL SHEETS	SHEET NO.
VAR	*	VAR	66	24
FED. ROAD DIST. NO. 4		ILLINOIS	FED. AID PROJECT	

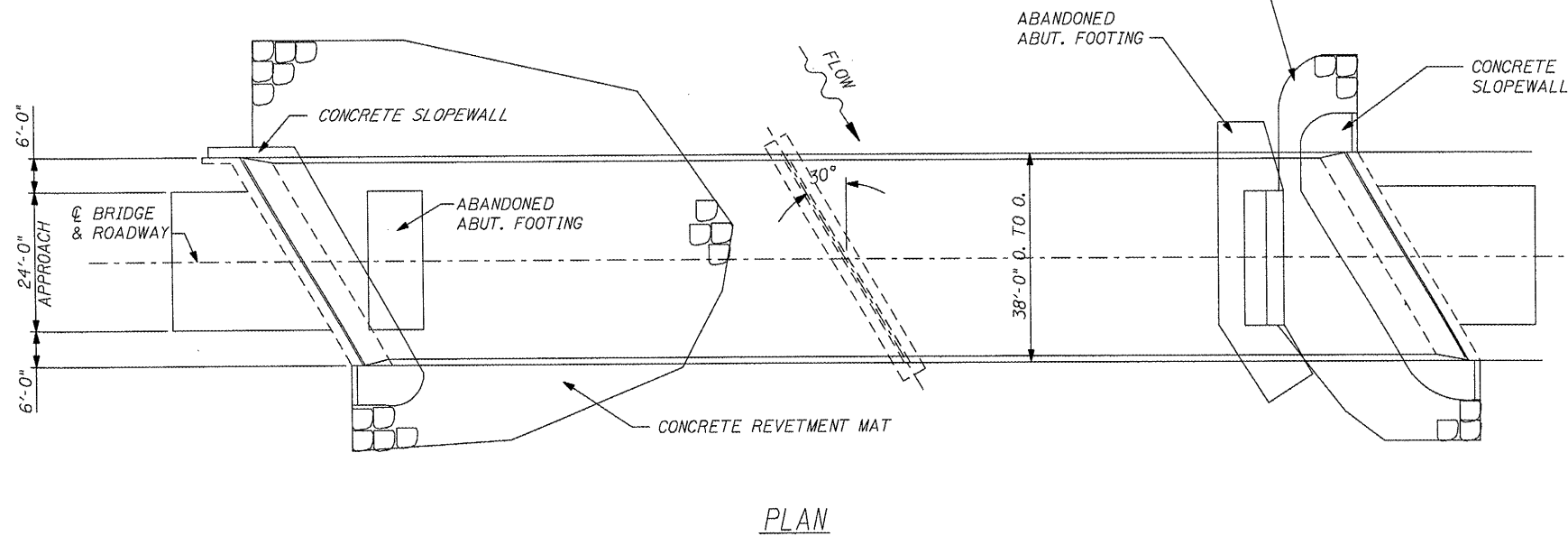
*** D4 SCOUR MITIGATION 2006**

INDEX OF SHEETS

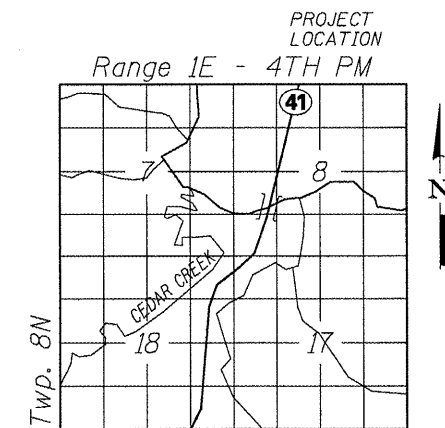
SHEET NUMBER	DESCRIPTION
1	GENERAL PLAN AND PROFILE, SUMMARY OF QUANTITIES, LOCATION MAP
2	R.O.W. PLAN
3	PROPOSED SITE PLAN
4	PROPOSED DIMENSION PLAN
5-6	SITE PROFILE
7-11	CROSS SECTIONS



ITEM	UNIT	TOTAL
CHANNEL EXCAVATION	CU YD	1657
STONE RIP-RAP, CLASS A5	TONS	718
FILTER FABRIC	SQ YD	2902
GABIONS	CU YD	450
SLOPE MATTRESS 12"	SQ YD	2175
SUB-BASE GRANULAR MATERIAL, TYPE C	TONS	869
REMOVE EXISTING STRUCTURE	EACH	2
GABION ANCHOR STAKES	EACH	148
DEWATERING STRUCTURE NO. 3	EACH	1



DAVID L. MAURER
LICENSED PROFESSIONAL ENGINEER
ILLINOIS
Exp. Date 11/2009
P.E. No.: 062-030577



WATERWAY/SCOUR INFORMATION

DESIGN FLOOD	100 YRS
DRAINAGE AREA	252.6 SQ MI
FLOW	17,240 CFS
FLOW DEPTH	22.32 FT
OPENING REQUIRED	1870 SQ FT
OPENING PROVIDED	2382 SQ FT
CONTRACTION SCOUR DEPTH	32 FT

ILLINOIS DEPARTMENT OF TRANSPORTATION
GENERAL PLAN & ELEVATION
S.N. 029-0053
F.A.P. 574 (IL. RTE. 41)
OVER CEDAR CREEK
FULTON COUNTY
SHEET 1 OF 11