

# LEGEND

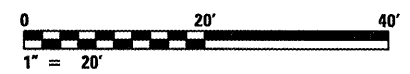
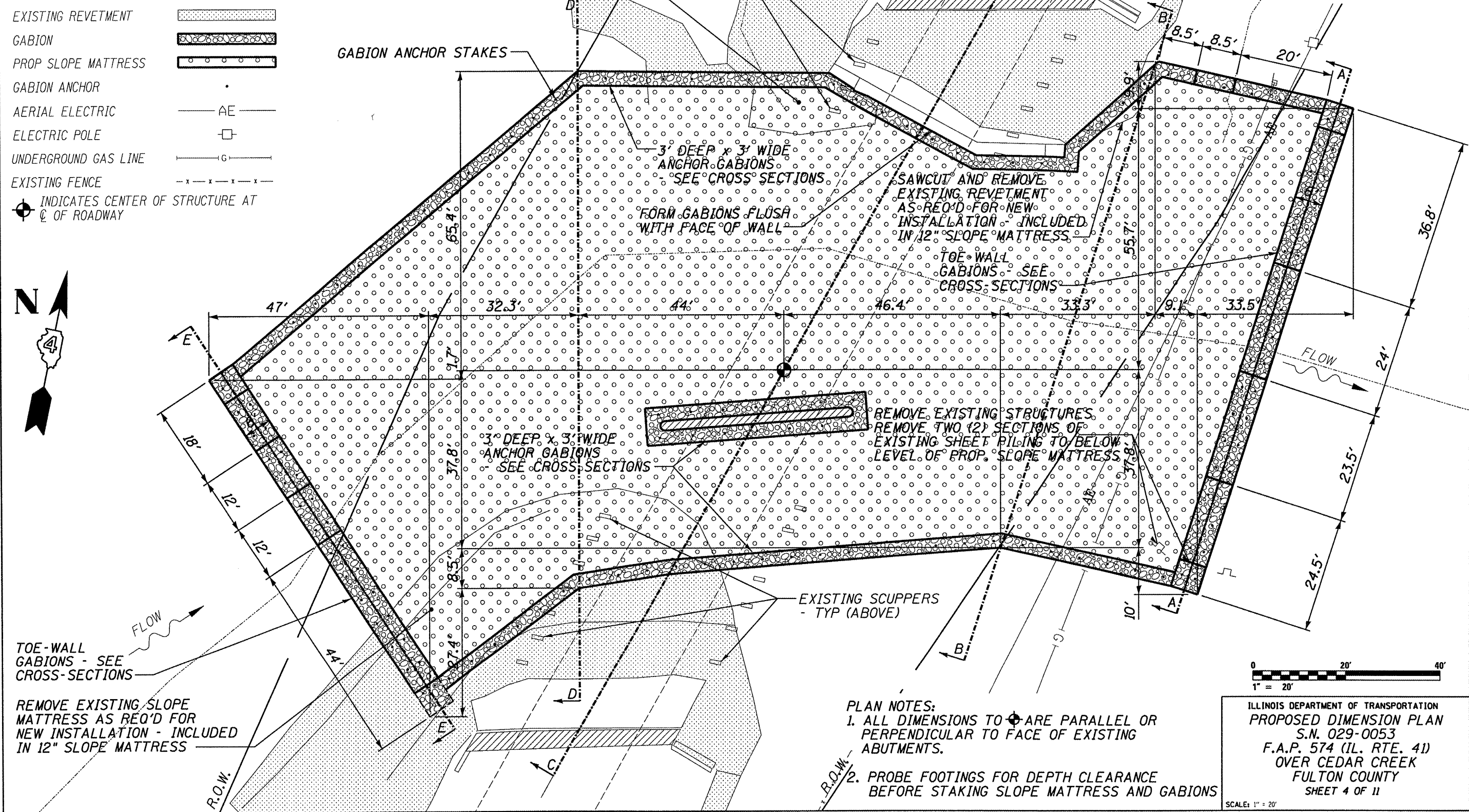
- R.O.W.
- CONCRETE ABUTMENT
- STREAM CENTERLINE
- EXISTING REVETMENT
- GABION
- PROP SLOPE MATTRESS
- GABION ANCHOR
- AERIAL ELECTRIC
- ELECTRIC POLE
- UNDERGROUND GAS LINE
- EXISTING FENCE
- INDICATES CENTER OF STRUCTURE AT  $\phi$  OF ROADWAY

REMOVE EXISTING RIP-RAP AS REQ'D FOR NEW INSTALLATION - INCLUDED IN CHANNEL EXCAVATION

EXISTING SCUPPERS - TYP (ABOVE)

ROUTE NO.	SECTION	COUNTY	TOTAL SHEETS	SHEET NO.
VAR	*	VAR	66	27
FED. ROAD DIST. NO. 4		ILLINOIS	FED. AID PROJECT	

## \* D4 SCOUR MITIGATION 2006



- PLAN NOTES:**
1. ALL DIMENSIONS TO  $\phi$  ARE PARALLEL OR PERPENDICULAR TO FACE OF EXISTING ABUTMENTS.
  2. PROBE FOOTINGS FOR DEPTH CLEARANCE BEFORE STAKING SLOPE MATTRESS AND GABIONS

ILLINOIS DEPARTMENT OF TRANSPORTATION  
 PROPOSED DIMENSION PLAN  
 S.N. 029-0053  
 F.A.P. 574 (IL. RTE. 41)  
 OVER CEDAR CREEK  
 FULTON COUNTY  
 SHEET 4 OF 11

SCALE: 1" = 20'