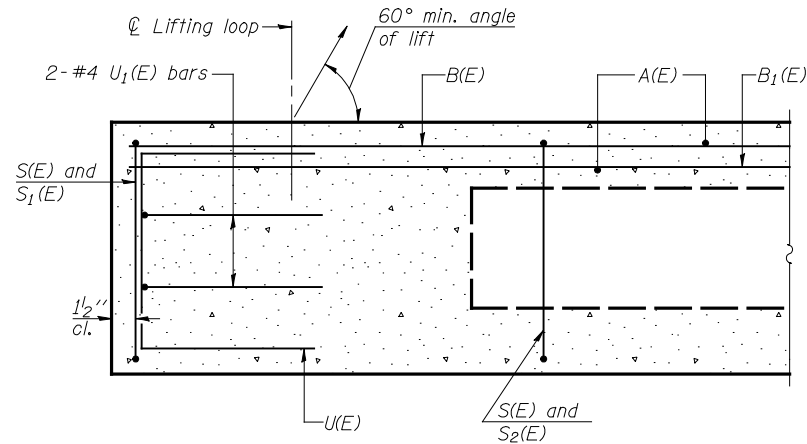


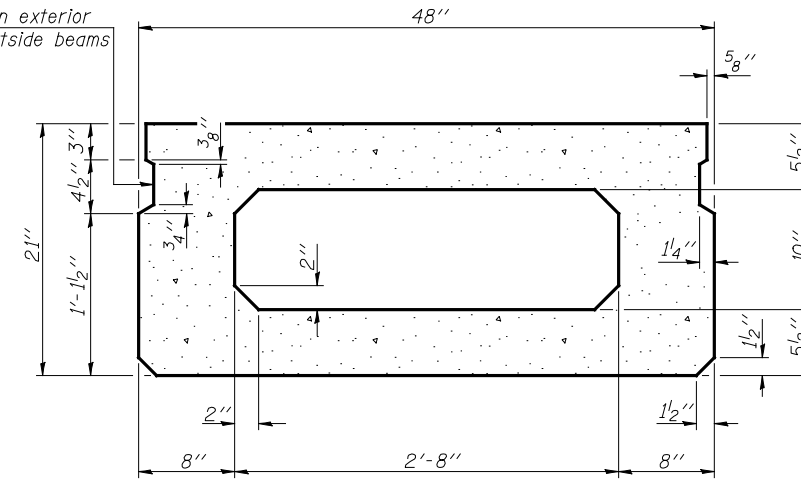
STATE OF ILLINOIS
DEPARTMENT OF TRANSPORTATION

SHEET 6
OF 10

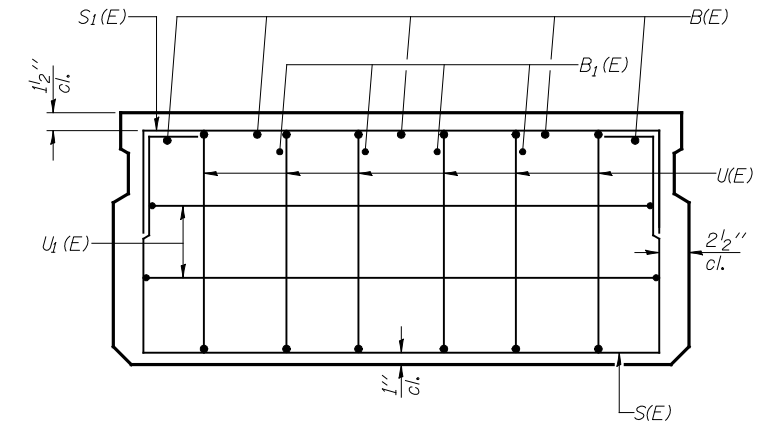
F.A.P. RTE.	SECTION	COUNTY	TOTAL SHEETS	SHEET NO.
721	(115BR-1)BR	PIATT	32	17
FED. ROAD DIST. NO.	ILLINOIS	FED. AID PROJECT		
			CONTRACT NO. 70433	



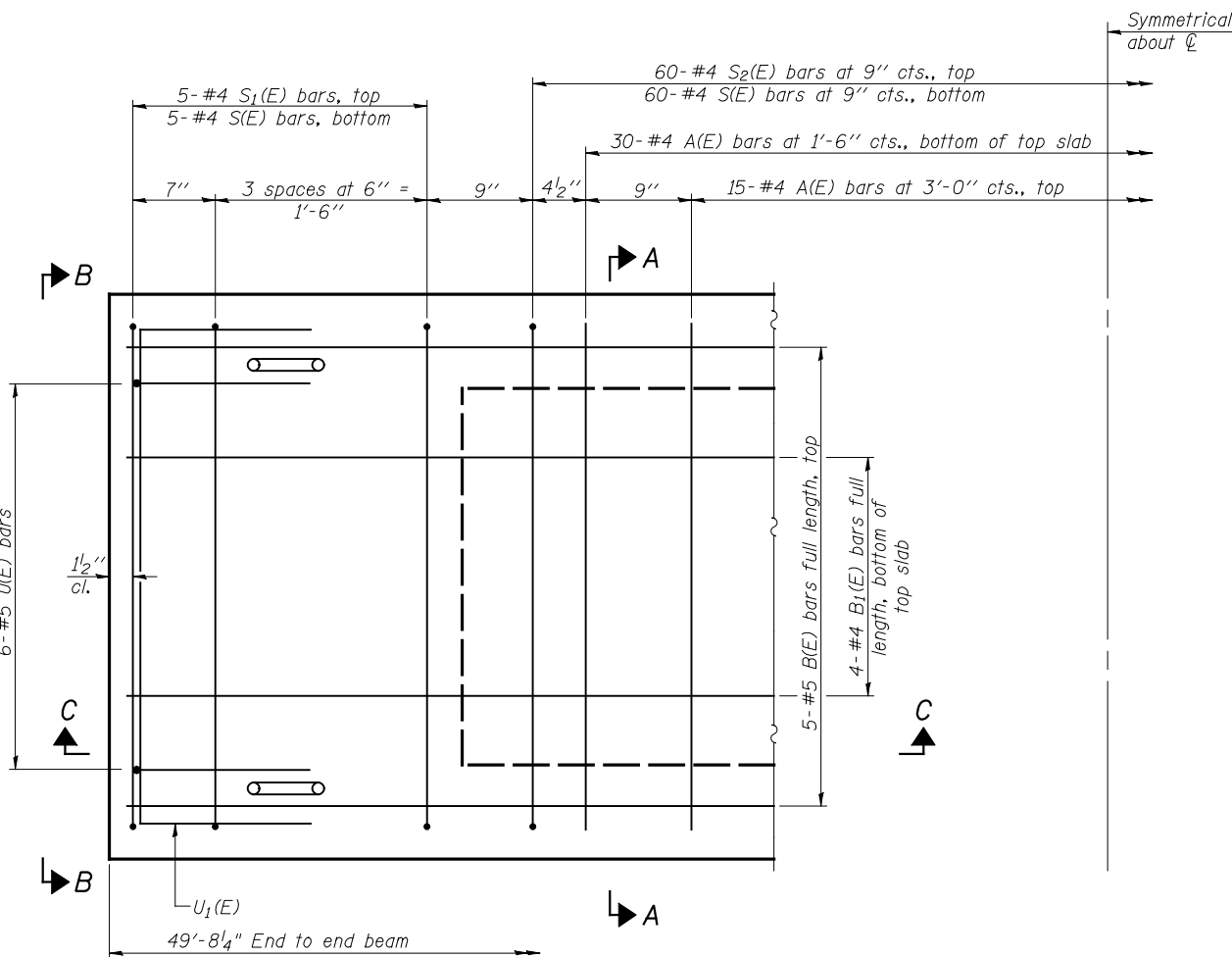
SECTION C-C



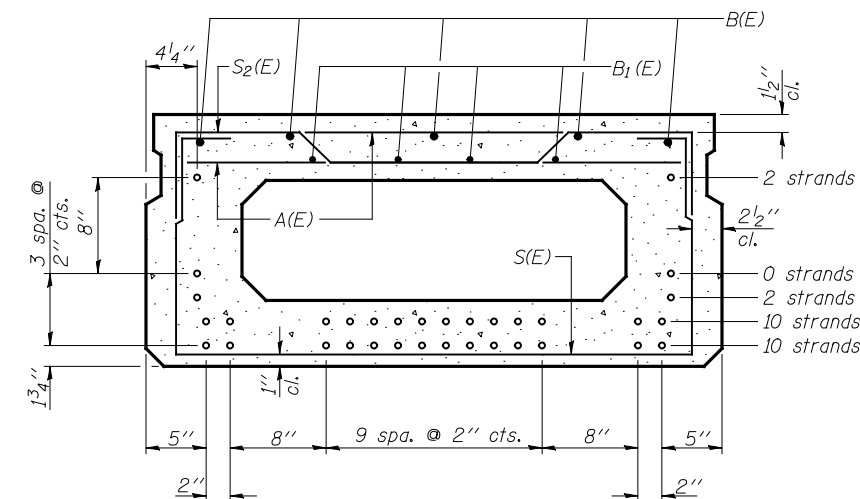
SECTION A-A
(Showing dimensions)



VIEW B-B



PLAN VIEW



SECTION A-A

(Showing reinforcement and permissible strand locations)

Note: Place the number of strands specified in each row symmetrically about the centerline of beam in the permissible strand locations shown.

BAR LIST
ONE BEAM ONLY
(For Information Only)

Bar	No.	Size	Length	Shape
A(E)	46	#4	3'-7"	—
B(E)	5	#5	49'-5"	—
B1(E)	4	#4	49'-5"	—
S(E)	70	#4	7'-5"	□
S1(E)	10	#4	6'-7"	□
S2(E)	60	#4	6'-10"	□
U(E)	12	#5	4'-0"	□
U1(E)	4	#4	6'-0"	□

Note: See sheet 7 of 10 for additional details and Bill of Material.

Note: Spacing of S(E) and S2(E) bars may be adjusted up to 4" in the immediate area of the transverse tie diaphragms to miss the block outs for the transverse ties.

JD Johnson, Depp & Quisenberry
CONSULTING ENGINEERS
Springfield, Illinois

DESIGNED: JDQ	DRAWN: SJS
CHECKED: DCD	CHECKED: DCD

PD-2148-0 8-29-07

21" X 48" PPC DECK BEAM
ILLINOIS 10 OVER
MADDEN CREEK
FAP ROUTE 721 SECTION (115BR-1)BR
PIATT COUNTY
STATION 1210+89.58
STRUCTURE NO. 074-0005