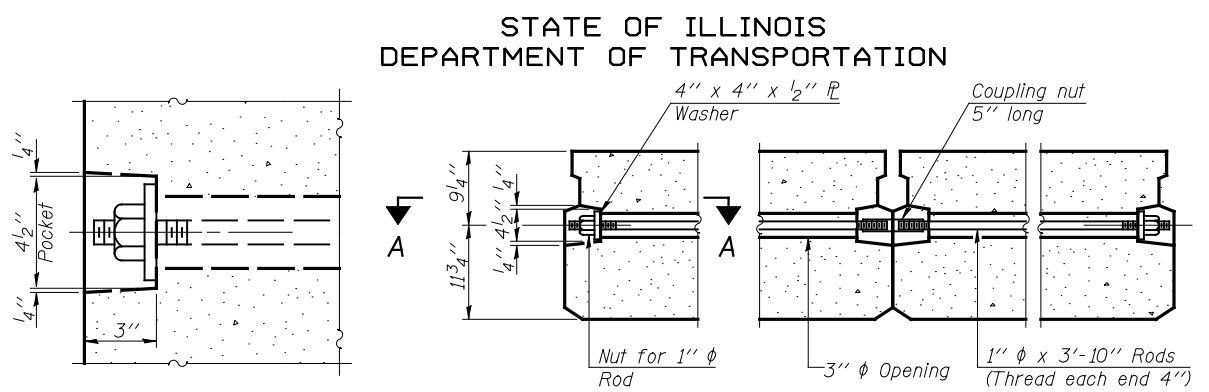
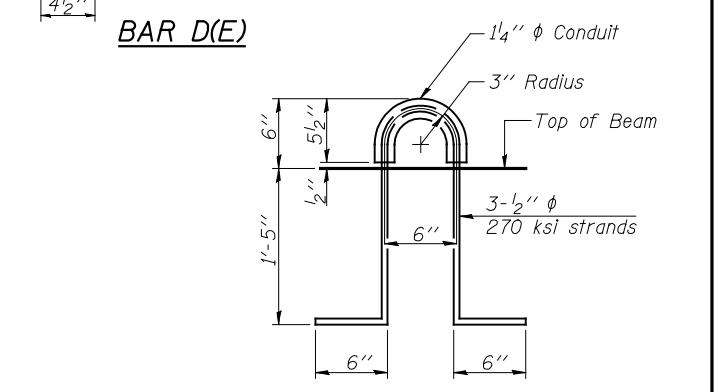
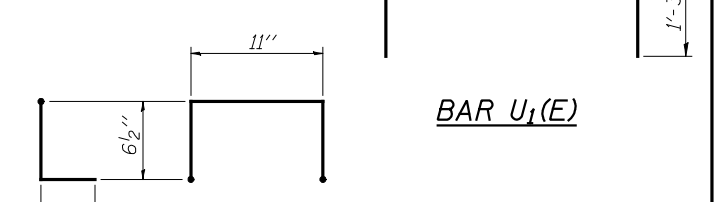
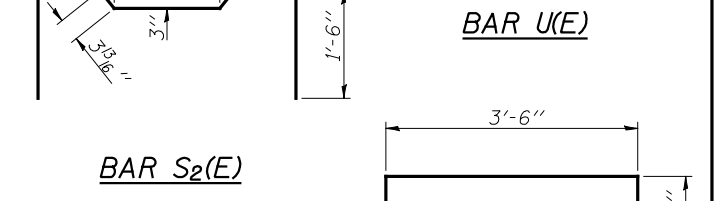
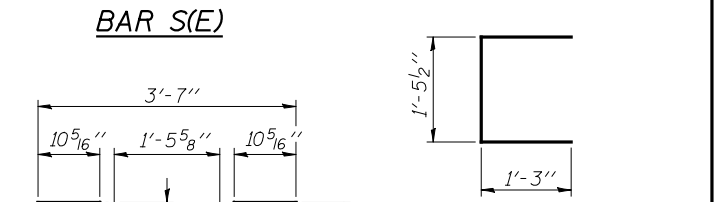
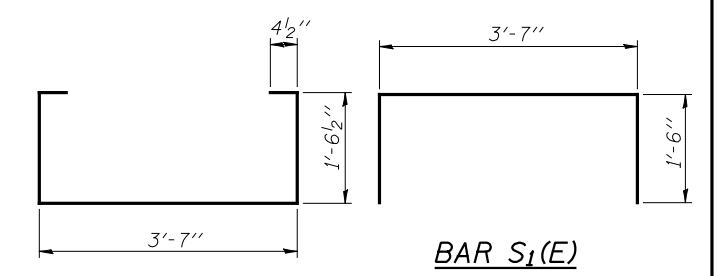


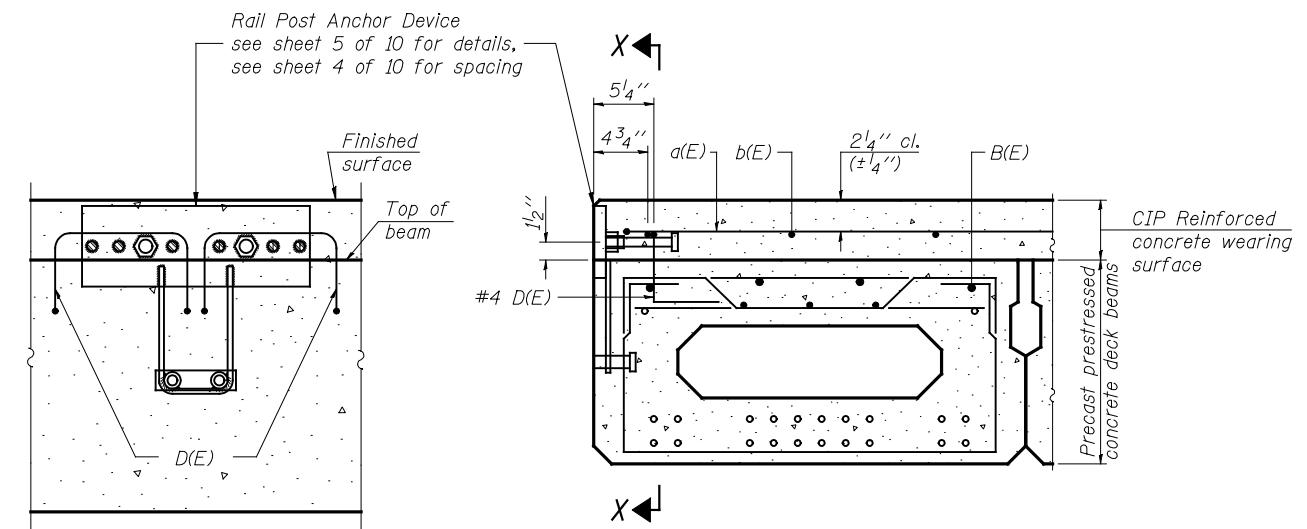
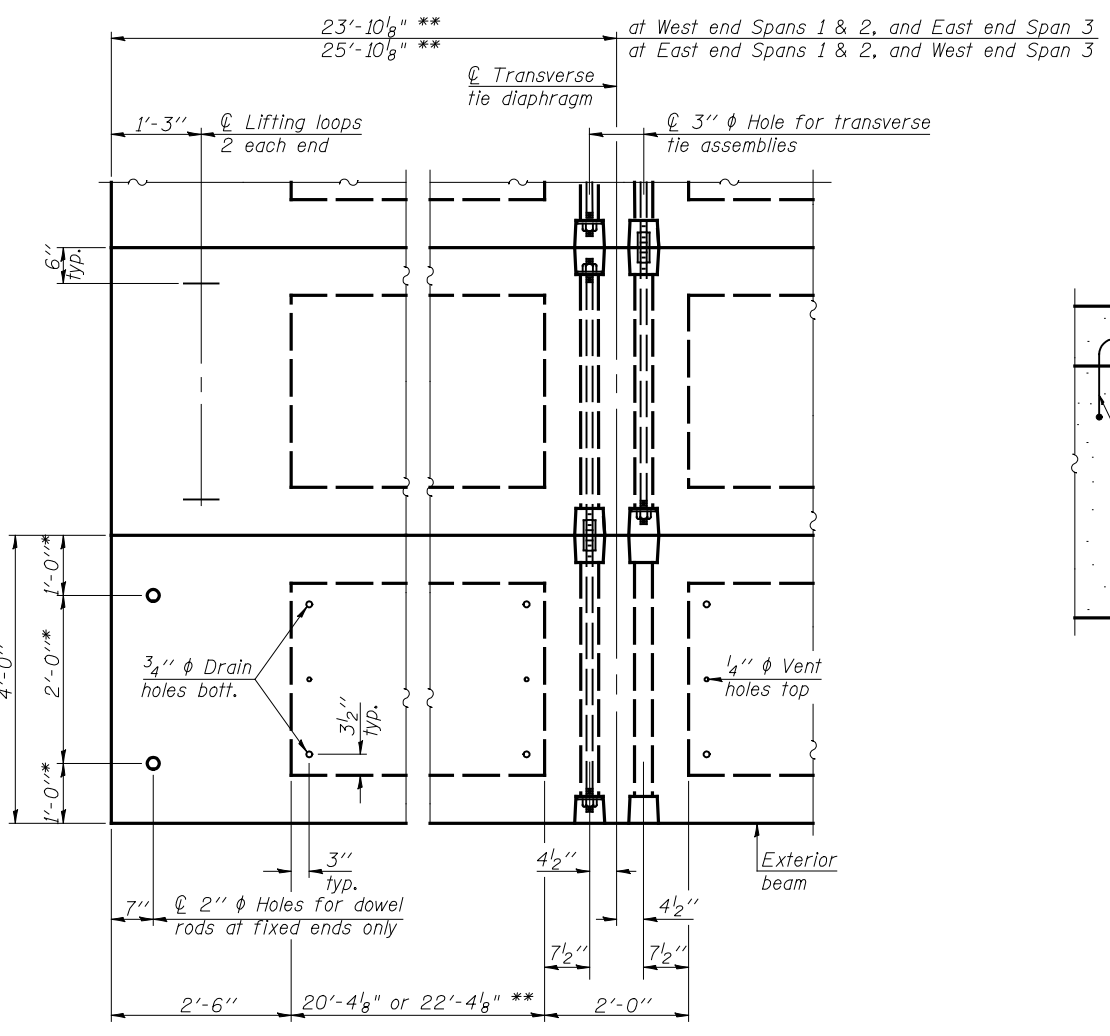
FIXED
 Note: Omit holes when using expansion bearings.



SECTION A-A **TYPICAL TRANSVERSE TIE ASSEMBLY**
 (21 required)



LIFTING LOOP DETAIL



SECTION X-X **CROSS SECTION**
RAIL POST ANCHOR DEVICE

NOTES:
 * Dowel Rod locations and Bearing Pad dimensions are "non-standard", in order to avoid conflicts with existing dowel rods at the piers.
 ** Transverse Tie locations are staggered to avoid conflict with Rail Post Anchors for existing bridge rail.

NOTES
 Prestressing steel shall be uncoated high strength, low relaxation 7-wire strand, Grade 270. The nominal diameter shall be 1/2" and the nominal cross-sectional area shall be 0.153 sq. in. The 1" φ rods in the transverse tie assembly shall be tightened to a snug fit and the threads set. Pockets on exterior faces of bridge shall be filled with grout after transverse tie assembly is in place.
 Reinforcement bars shall conform to ASTM A 706 (IL MOD), Grade 60. (See Special Provisions)
 Two 1/8" fabric adjusting shims of the dimensions of the exterior bearing pad shall be provided for each bearing pad location.
 A minimum 2 1/2" φ lifting pin shall be used to engage the lifting loops during handling.
 Corrosion Inhibitor, per Article 1020.05(b)(12) and 1021.06 of the Standard Specifications, shall be used in the concrete for precast prestressed concrete deck beams.
 Compressive strength of prestressed concrete, f'c, shall be 6000 psi.
 Compressive strength of prestressed concrete at release, f'ci, shall be 5000 psi.

BILL OF MATERIAL

Precast Prestressed Conc. Deck Bms. (21" depth)	Sq. Ft.	4770
---	---------	------

21" X 48" PPC DECK BEAM DETAILS
 ILLINOIS 10 OVER
 MADDEN CREEK
 FAP ROUTE 721 SECTION (115BR-1)BR
 PIATT COUNTY
 STATION 1210+89.58
 STRUCTURE NO. 074-0005

JD Johnson, Depp & Quisenberry
 CONSULTING ENGINEERS
 Springfield, Illinois

DESIGNED: JDQ	DRAWN: SJS
CHECKED: DCD	CHECKED: DCD

PD-2148-OD 8-29-07

FILE: J:\JDO\110149 IL-105VV#4 IL 10 Madden Creek\H-MaddenCreek\07beam2.dgn
 USER: \$(USER)
 DATE: 06/13/2008 09:38:46