

F.A. RTE.	SECTION	COUNTY	TOTAL SHEETS	SHEET NO.
749	(15,21-25)I	DOUGLAS	8	1
FED. ROAD DIST. NO.	ILLINOIS	CONTRACT NO. 70733		

STATE OF ILLINOIS  
DEPARTMENT OF TRANSPORTATION  
DIVISION OF HIGHWAYS

**PROPOSED  
HIGHWAY PLANS**

F.A.P. ROUTE 749 (IL 133)  
SECTION (15,21-25)I

DOUGLAS COUNTY

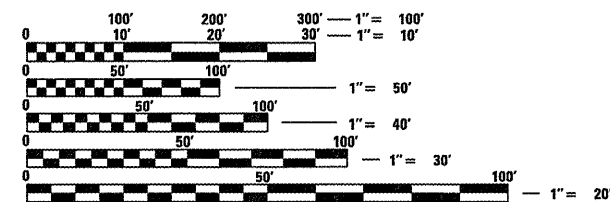
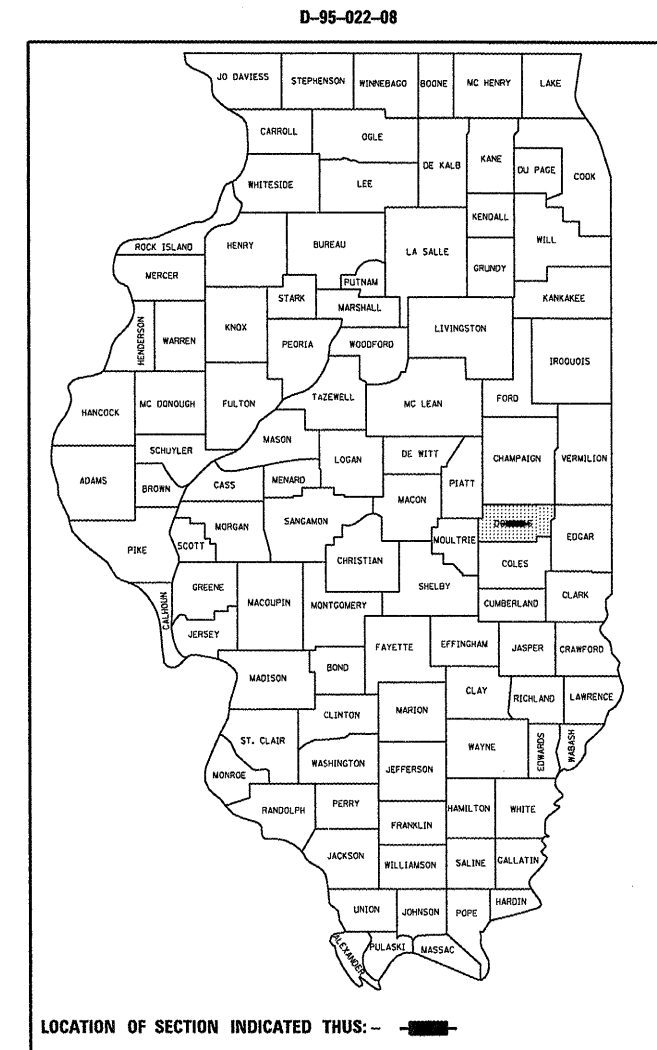
C-95-022-08

PATCHING AND DRAINAGE

FOR INDEX OF SHEETS, SEE SHEET NO. 2  
FOR SUMMARY OF QUANTITIES, SEE SHEET NO. 4

CURRENT ADT:  
F. A 749 (IL133) = 5,000 (2008)

DESIGN DESIGNATION  
N/A

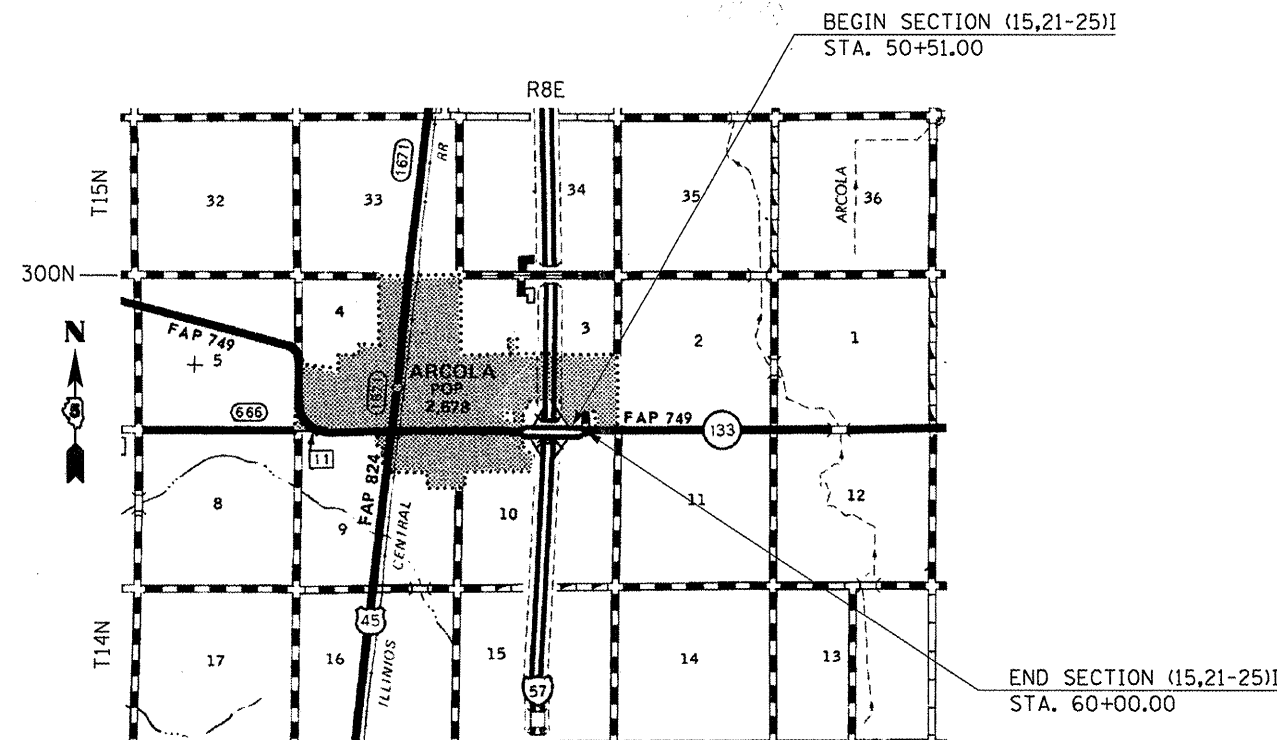


FULL SIZE PLANS HAVE BEEN PREPARED USING STANDARD ENGINEERING SCALES. REDUCED SIZED PLANS WILL NOT CONFORM TO STANDARD SCALES. IN MAKING MEASUREMENTS ON REDUCED PLANS, THE ABOVE SCALES MAY BE USED.

J.U.L.I.E.  
JOINT UTILITY LOCATION INFORMATION FOR EXCAVATION  
1-800-892-0123  
OR 811

PROJECT ENGINEER: KEVIN TRAPP (217)465-4181  
SQUAD LEADER: MICHAEL A. LEROY

CONTRACT NO. 70733



TOTAL LENGTH OF SECTION & PROJECT = 480.00 FEET = 0.091 MILES  
NET LENGTH OF SECTION & PROJECT = 480.00 FEET = 0.091 MILES

STATE OF ILLINOIS  
DEPARTMENT OF TRANSPORTATION  
DIVISION OF HIGHWAYS

SUBMITTED *July 9, 2008*

*[Signature]*  
DEPUTY DIRECTOR OF HIGHWAYS, REGION ENGINEER

*August 15, 2008*  
*Eric E. Harrel*  
ENGINEER OF DESIGN AND ENVIRONMENT

*Interim*  
*August 15, 2008*  
*Christine M. Reed*  
DIRECTOR OF HIGHWAYS, CHIEF ENGINEER

PRINTED BY THE AUTHORITY  
OF THE STATE OF ILLINOIS

## INDEX OF SHEETS

1	COVER SHEET
2	HIGHWAY STANDARDS/INDEX OF SHEETS
3	GENERAL NOTES
4	SUMMARY OF QUANTITIES
5	EXISTING TYPICAL CROSS SECTIONS
6	PROPOSED TYPICAL CROSS SECTIONS
7	SCHEDULE OF QUANTITIES
8	PLAN SHEET

## HIGHWAY STANDARDS

001001-01	AREAS OF REINFORCEMENT BARS
001006	DECIMAL OF AN INCH AND OF A FOOT
421001-02	BAR REINFORCEMENT FOR CRC PAVEMENT
442001-04	CLASS A PATCHES
601001-02	SUB-SURFACE DRAINS
601101	CONCRETE HEADWALL FOR PIPE DRAIN
606301-03	PC CONCRETE ISLANDS AND MEDIANS
701101-01	OFF-ROAD OPERATIONS, MULTILANE, 4.5 M (15') TO 600 MM (24") FROM PAVEMENT EDGE
701201-02	LANE CLOSURE, 2L,2W, DAY ONLY, FOR SPEEDS > 45 MPH
701301-02	LANE CLOSURE, 2L, 2W, SHORT TIME OPERATIONS
701901	TRAFFIC CONTROL DEVICES
780001-01	TYPICAL PAVEMENT MARKINGS

FILE NAME =  
c:\projects\4570733\70733plans.dgn

USER NAME = craig

DESIGNED -

REVISED -

DRAWN -

REVISED -

PLOT SCALE = 40.0000 / IN.

CHECKED -

REVISED -

PLOT DATE = 7/11/2008

DATE -

REVISED -

**STATE OF ILLINOIS  
DEPARTMENT OF TRANSPORTATION**

**INDEX OF SHEETS /HIGHWAY STANDARDS**

SCALE: SHEET NO. OF SHEETS STA. TO STA.

F.A. RTE.	SECTION	COUNTY	TOTAL SHEETS	SHEET NO.
749	(15,21-25)I	DOUGLAS	8	2
CONTRACT NO.			70733	
FED. ROAD DIST. NO. ILLINOIS FED. AID PROJECT				

## GENERAL NOTES

G.N.-100  
 ENGLISH UNITS OF MEASUREMENT SHALL GOVERN OVER AND SUPERSEDE ANY METRIC UNITS SHOWN IN THIS CONTRACT. WHERE INCLUDED, METRIC UNITS ARE FOR INFORMATION ONLY.

G.N.-105.07B  
 EXISTING STATE-OWNED AND MAINTAINED UTILITY LINES ARE SHOWN ON THE PLANS TO INDICATE THEIR PRESENCE AND APPROXIMATE LOCATION. THE CONTRACTOR SHALL SECURE AN APPROVED LOCATING FIRM TO LOCATE STATE-OWNED UTILITIES PRIOR TO COMMENCING ANY EXCAVATION IN THE VICINITY OF THESE LINES IN ACCORDANCE TO SECTION 803 OF THE STANDARD SPECIFICATIONS. SHOULD ANY OF THE LINES BE DAMAGED BY THE CONTRACTOR'S OPERATION, THE CONTRACTOR SHALL REPAIR THEM TO THE SATISFACTION OF THE ENGINEER AT NO COST TO THE STATE.

ALSO THERE MAY BE UTILITIES PRESENT WHICH WERE INSTALLED BY THE STATE BUT ARE MAINTAINED BY OTHERS (CITY, TOWN, ETC.) THE APPROXIMATE LOCATIONS OF THESE LINES ARE ALSO SHOWN ON THE PLANS ALONG WITH THE NAME OF THE MAINTAINING AGENCY. THE CONTRACTOR SHALL COORDINATE THE LOCATION OF THESE LINES WITH THE LOCAL AGENCY PRIOR TO COMMENCING ANY EXCAVATION OR BORING IN THEIR VICINITY. SHOULD THESE LINES BE DAMAGED BY THE CONTRACTOR'S OPERATIONS, THE CONTRACTOR SHALL REPAIR THEM TO THE SATISFACTION OF, AND AT NO COST TO, THE LOCAL AGENCY AND THE STATE.

G.N.-442B -- PATCHING SCHEDULES  
 THE PATCHING SCHEDULES INCLUDED IN THE PLANS REPRESENT THE BEST INFORMATION AVAILABLE AT THE TIME OF COMPLETION OF THE PLANS FOR LETTING. VARIATIONS IN LOCATION AND SIZES OF BOTH FULL-DEPTH AND PARTIAL-DEPTH PATCHES MAY OCCUR.

G.N.-601  
 THE HOT-MIX ASPHALT PLUG SHOWN ON HIGHWAY STANDARD 601001 FOR SHOULDER REMOVAL AND REPLACEMENT SHALL BE CONSTRUCTED OF A HOT-MIX ASPHALT MIXTURE OF 75% CA-11 AND 25% CA-16 WITH 2.8 +/- 0.2% OF ASPHALT CEMENT. THE ASPHALT CEMENT SHALL BE PG-64-22.

NO COMMITMENTS

FILE NAME * c:\projects\4570733\70733plans.dgn	USER NAME = craige	DESIGNED -	REVISED -	<b>STATE OF ILLINOIS DEPARTMENT OF TRANSPORTATION</b>	<b>GENERAL NOTES</b>	F.A. RTE. 749	SECTION (15,21-25)I	COUNTY DOUGLAS	TOTAL SHEETS 8	SHEET NO. 3
PLOT SCALE = 40,0000' / IN.	DRAWN -	CHECKED -	REVISED -	SCALE: SHEET NO. OF SHEETS STA. TO STA.		FED. ROAD DIST. NO. ILLINOIS FED. AID PROJECT CONTRACT NO. 70733				
PLOT DATE = 7/11/2008	DATE -	REVISED -	REVISED -							

# SUMMARY OF QUANTITIES

LOCATION:

FAP 749 (IL 133)  
DOUGLAS COUNTY

STA. 50+51.00  
TO  
STA. 60+00.00  
RURAL  
100% STATE  
J000

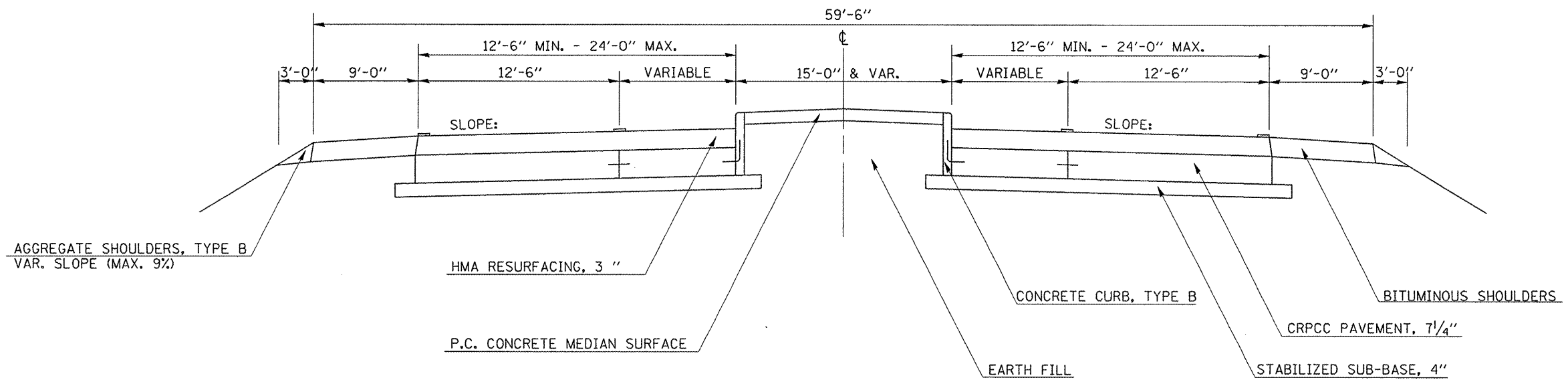
CONSTRUCTION CODE:

PAY ITEM CODE	PAY ITEM	UNIT	TOTAL
25100630	EROSION CONTROL BLANKET	SQ YD	8.0
44200553	CLASS A PATCH, TYPE II, 10 INCH	SQ YD	9.0
44200557	CLASS A PATCH, TYPE III, 10 INCH	SQ YD	18.0
44200559	CLASS A PATCH, TYPE IV, 10 INCH	SQ YD	422.0
44201349	CLASS C PATCH, TYPE I, 10 INCH	SQ YD	8.0
44213000	<i>PATCHING</i> REINFORCEMENT	SQ YD	450.0
44213200	SAW CUTS	FOOT	797.0
60100060	CONCRETE HEADWALL FOR PIPE DRAINS	EACH	2.0
60107600	PIPE UNDERDRAIN54"	FOOT	70.0
60108100	PIPE UNDERDRAIN54"(SPECIAL)	FOOT	106.0
60623711	CONCRETE MEDIAN	SQ FT	552.0
67100100	MOBILIZATION	L SUM	1.0
70100450	TRAFFIC CONTROL AND PROTECTION, <i>STANDARD</i> 701201	L SUM	1.0
70103815	TRAFFIC CONTROL SURVEILLANCE	CAL DA	3.0
78001110	* PAINT PAVEMENT MARKING- LINE 4"	FOOT	280.0
X4403300	CONCRETE MEDIAN REMOVAL	SQ FT	552.0
Z0075300	TIE BARS	EACH	139.0

\* SPECIALTY ITEMS

### EXISTING TYPICAL CROSS SECTION

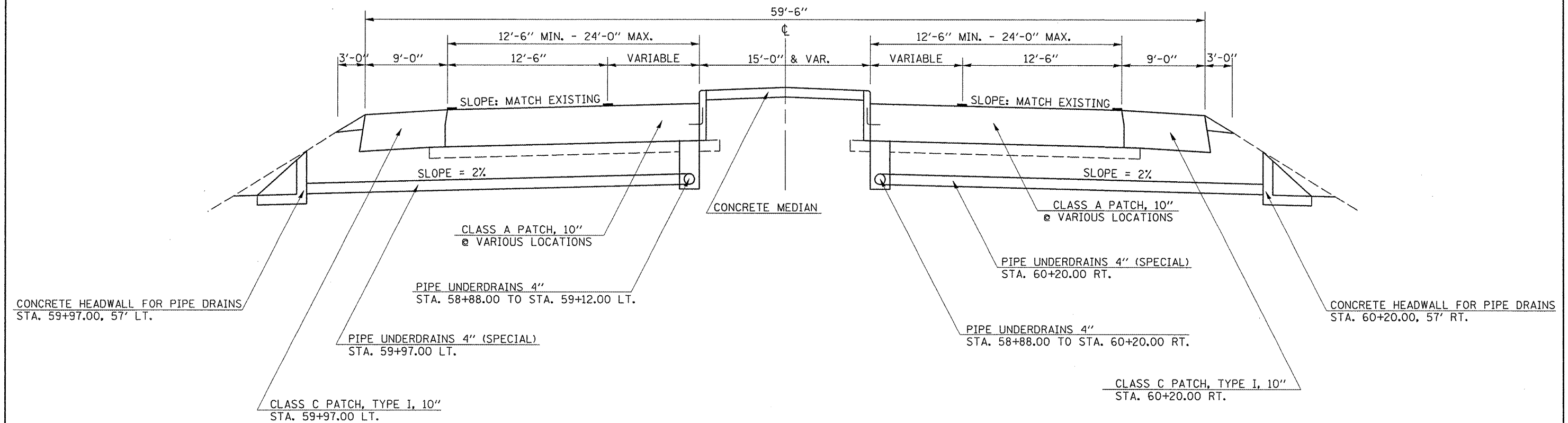
STATION TO STATION  
50+51.00 60+00.00



FILE NAME = c:\projects\4570733\70733plans.dgn	USER NAME = craigre	DESIGNED -	REVISED -	<b>STATE OF ILLINOIS DEPARTMENT OF TRANSPORTATION</b>	<b>EXISTING TYPICAL CROSS SECTION</b>	F.A. RTE. 749	SECTION (15,21-25)I	COUNTY DOUGLAS	TOTAL SHEETS 8	SHEET NO. 5
PLOT SCALE = 40.0000' / IN.	CHECKED -	DATE -	REVISED -	SCALE:	SHEET NO. OF SHEETS STA. TO STA.	CONTRACT NO. 70733 FED. ROAD DIST. NO. ILLINOIS FED. AID PROJECT				

**PROPOSED TYPICAL CROSS SECTION**

STATION TO STATION  
50+51.00 60+00.00



FILE NAME : c:\projects\570733\70733plans.dgn	USER NAME = craigc	DESIGNED -	REVISED -	<b>STATE OF ILLINOIS DEPARTMENT OF TRANSPORTATION</b>	<b>PROPOSED TYPICAL CROSS SECTION</b>	F.A. RTE.	SECTION	COUNTY	TOTAL SHEETS	SHEET NO.
	PLOT SCALE = 40.0000' / IN.	DRAWN -	REVISED -			749	(15.21-25)	DOUGLAS	8	6
	PLOT DATE = 7/11/2008	CHECKED -	REVISED -			CONTRACT NO. 70733				
	DATE -	REVISED -		SCALE:	SHEET NO. OF SHEETS	STA. TO STA.	FED. ROAD DIST. NO. ILLINOIS FED. AID PROJECT			

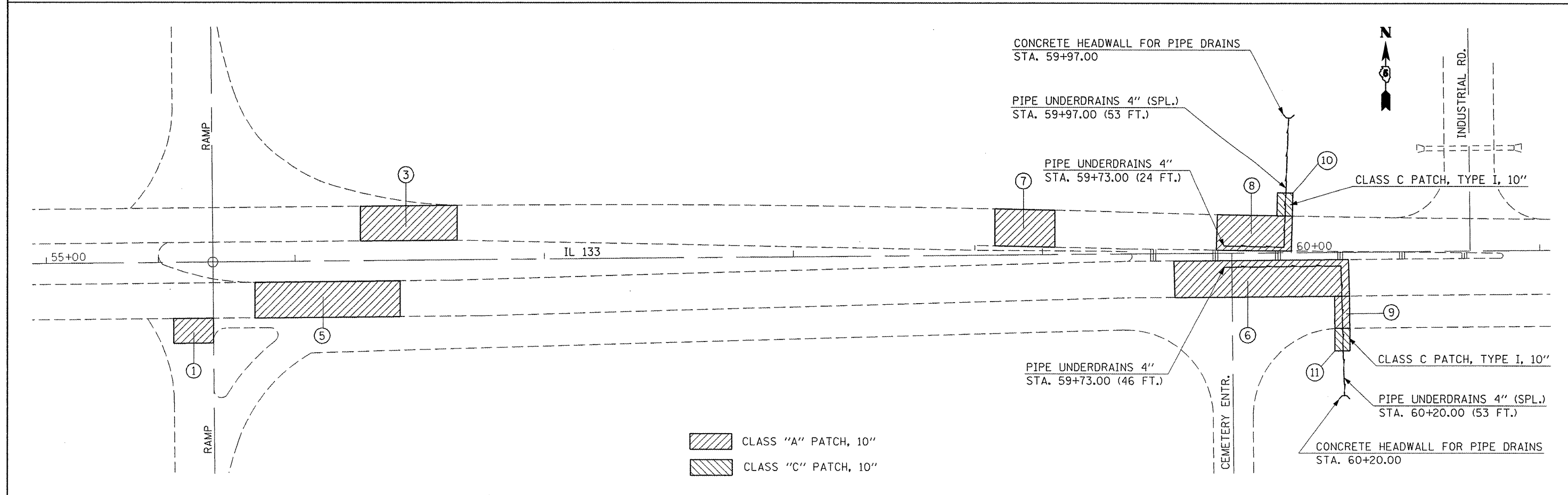
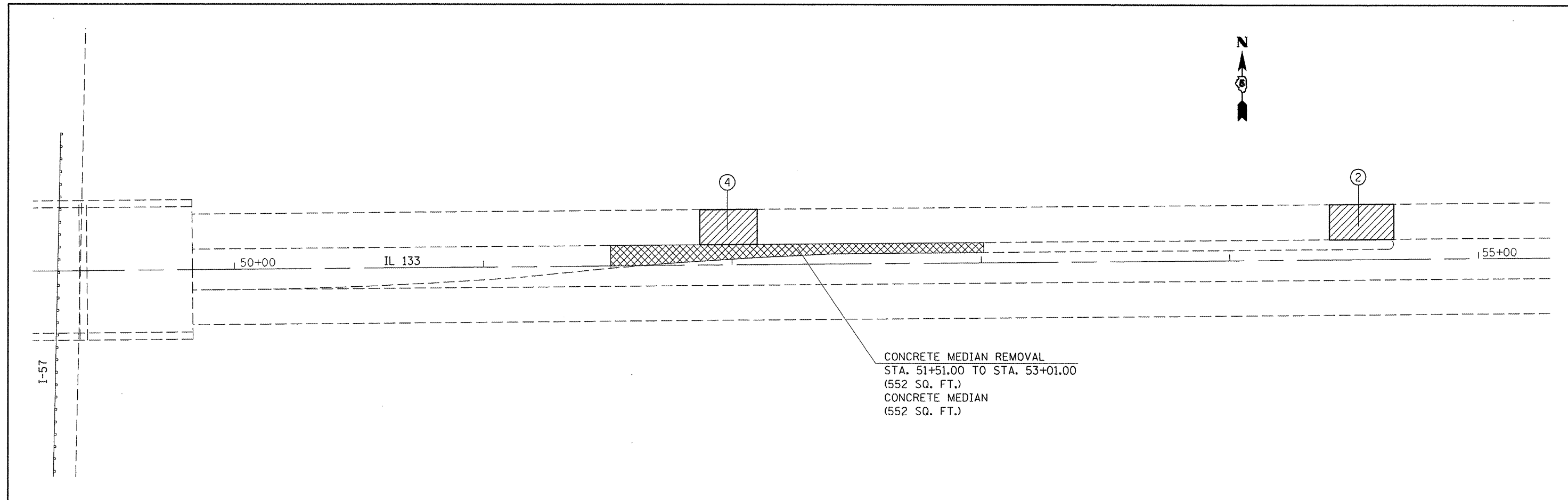
# SCHEDULE OF QUANTITIES

## CLASS "A" PATCHING QUANTITIES

PATCH	STATION	DIRECTION	LENGTH	WIDTH	TYPE II	TYPE III	TYPE IV	SAW CUTS	TIE BARS	PATCH
					10"	10"	10"			REINFORCEMENT
			(FT)	(FT)	44200553	44200557	44200559	44213200	Z0075300	44213000
					(SQ YD)	(SQ YD)	(SQ YD)	(FT)	(EACH)	(SQ YD)
1	55+97.80	NB OFF RAMP	10	16	0.0	17.8	0.0	74.0	0.0	17.8
2	54+66.00	WB	26	14	0.0	0.0	40.4	82.0	13.0	40.4
3	56+26.00	WB	37	14	0.0	0.0	57.6	93.0	19.0	57.6
4	52+10.00	WB	22	15	0.0	0.0	36.7	82.0	11.0	36.7
5	55+84.00	EB	68	14	0.0	0.0	105.8	124.0	34.0	105.8
6	60+23.00	EB (TL)	70	13	0.0	0.0	101.1	122.0	35.0	101.1
7	59+12.00	WB	24	13	0.0	0.0	34.7	76.0	12.0	34.7
8	60+00.00	WB	30	14	0.0	0.0	46.7	86.0	15.0	46.7
9	60+23.00	EB	6	13	8.7	0.0	0.0	58.0	0.0	8.7
<b>TOTAL</b>					<b>8.7</b>	<b>18.0</b>	<b>422.9</b>	<b>797.0</b>	<b>139.0</b>	<b>449.3</b>

## CLASS "C" PATCHING QUANTITIES

PATCH	STATION	DIRECTION	LENGTH	WIDTH	TYPE I
					10"
			(FT)	(FT)	44201349
					(SQ YD)
10	59+97.00	WB SHLDR	4	9	4.0
11	60+20.00	EB SHLDR	4	9	4.0
<b>TOTAL</b>					<b>8.0</b>



FILE NAME : c:\projects\d570733\70733plans.dgn	USER NAME : craigre	DESIGNED -	REVISED -
		DRAWN -	REVISED -
		CHECKED -	REVISED -
		DATE -	REVISED -

**STATE OF ILLINOIS  
 DEPARTMENT OF TRANSPORTATION**

<b>PLAN</b>	
SCALE:	SHEET NO. OF SHEETS STA. TO STA.

F.A. RTE.	SECTION	COUNTY	TOTAL SHEETS	SHEET NO.
749	(15,21-25)I	DOUGLAS	8	8
CONTRACT NO. 70733				
FED. ROAD DIST. NO. ILLINOIS FED. AID PROJECT				