

F.A.P. RTE.	SECTION	COUNTY	TOTAL SHEETS	SHEET NO.
VAB	**	***	9	1

** DIST 8 DEEP WELLS 2009-1
 *** MADISON & ST. CLAIR

INDEX OF SHEETS

- 1 COVER SHEET, STANDARDS, ADT
- 2 GENERAL NOTES
- 3 SUMMARY OF QUANTITIES
- 4 LOCATION NO. 1: SITE PLAN VENICE WELLS (IL ROUTE 3)
- 5 LOCATION NO. 2: SITE PLAN 25TH STREET WELLS
- 6 LOCATION NO. 3: SITE PLAN MISSOURI AVENUE WELLS
- 7 LOCATION NO. 4: SITE PLAN TRI-LEVEL WELLS
- 8 TYPICAL WELL DETAILS LOCATION 1, 2 & 4
- 9 TYPICAL WELL DETAILS LOCATION 3

STATE OF ILLINOIS
 DEPARTMENT OF TRANSPORTATION
 DIVISION OF HIGHWAYS

**PROPOSED
 HIGHWAY PLANS**

VARIOUS ROUTES
 SECTION DIST 8 DEEP WELLS 2009-1

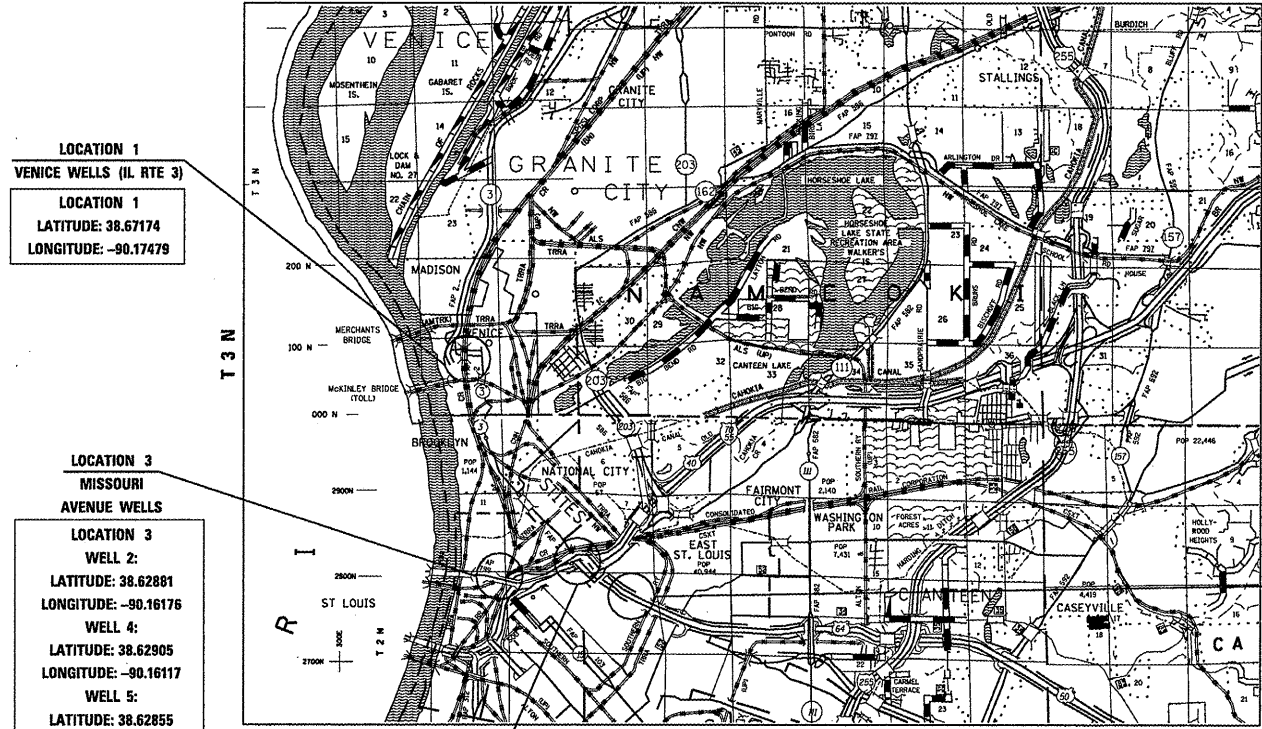
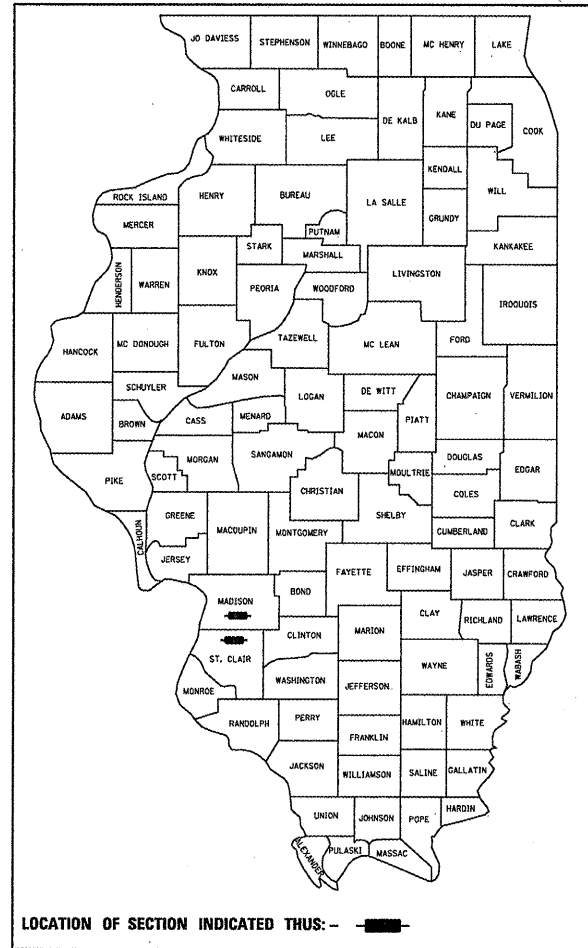
MADISON AND ST. CLAIR COUNTIES

C-98-099-08

STANDARDS

- 701406-04
- 701601-05
- 701901

D-98-104-08

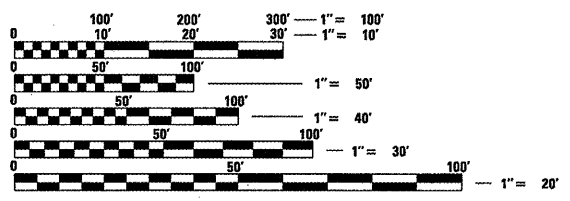


LOCATION 1
 VENICE WELLS (IL RTE 3)
 LOCATION 1
 LATITUDE: 38.67174
 LONGITUDE: -90.17479

LOCATION 3
 MISSOURI AVENUE WELLS
 LOCATION 3
 WELL 2:
 LATITUDE: 38.62881
 LONGITUDE: -90.16176
 WELL 4:
 LATITUDE: 38.62905
 LONGITUDE: -90.16117
 WELL 5:
 LATITUDE: 38.62855
 LONGITUDE: -90.16222
 WELL 6:
 LATITUDE: 38.78946
 LONGITUDE: -90.16568

LOCATION 4
 TRI-LEVEL WELLS
 LOCATION 4
 LATITUDE: 38.6335
 LONGITUDE: -90.1451

LOCATION 2
 25TH STREET WELLS
 LOCATION 2
 LATITUDE: 38.62752
 LONGITUDE: -90.13820

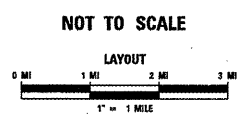


FULL SIZE PLANS HAVE BEEN PREPARED USING STANDARD ENGINEERING SCALES. REDUCED SIZED PLANS WILL NOT CONFORM TO STANDARD SCALES. IN MAKING MEASUREMENTS ON REDUCED PLANS, THE ABOVE SCALES MAY BE USED.

J.U.L.I.E.
 JOINT UTILITY LOCATION INFORMATION FOR EXCAVATION
 1-800-892-0123
 OR 811

PROJECT ENGINEER: PATTI LEBEAU (618)346-3179
 PROJECT MANAGER: CHERYL KEPLAR (618)346-3186

CONTRACT NO. 76C23



TRAFFIC DATA:
 LOCATION 1: VENICE (IL ROUTE 3) = 6,200 (2007)
 LOCATION 2: EB I-64 @ 25TH STREET = 3,900 (2007)
 ST. CLAIR AVENUE = 4,150 (2007)
 RAMP C = 950 (2007)
 LOCATION 3: MISSOURI AVENUE = 2,900 (2007)
 LOCATION 4: TRI-LEVEL & 25TH STREET = 68,800 (2007)

STATE OF ILLINOIS
 DEPARTMENT OF TRANSPORTATION
 DIVISION OF HIGHWAYS

SUBMITTED *June 23, 2008*
Alana C. Jamie
 DEPUTY DIRECTOR OF HIGHWAYS, REGION 5 ENGINEER

August 15, 2008
Eric Z. Harn
 INTERIM ENGINEER OF DESIGN AND ENVIRONMENT

August 15, 2008
Christine M. Reed
 DIRECTOR OF HIGHWAYS, CHIEF ENGINEER

PRINTED BY THE AUTHORITY
 OF THE STATE OF ILLINOIS