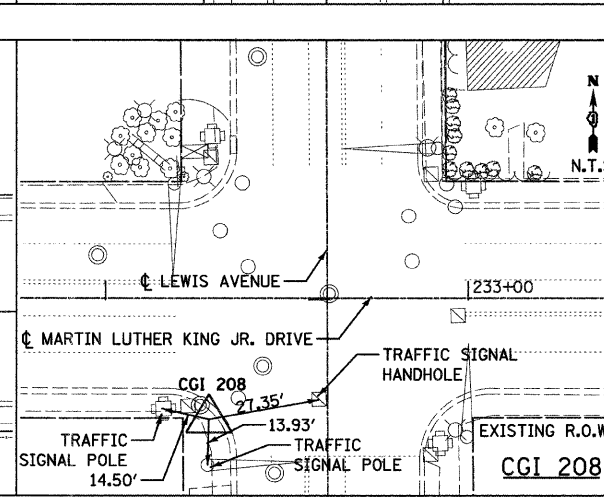
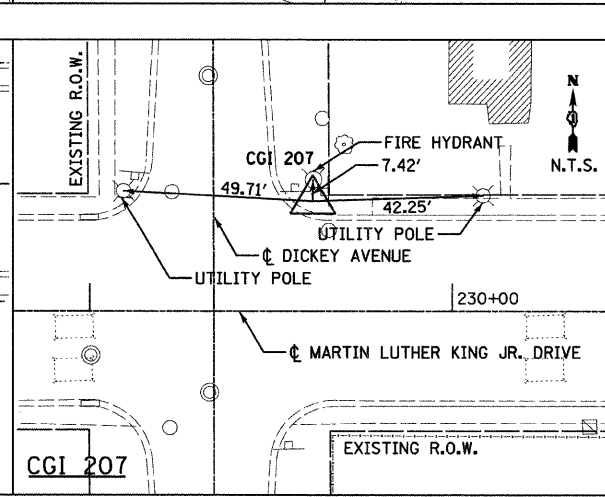
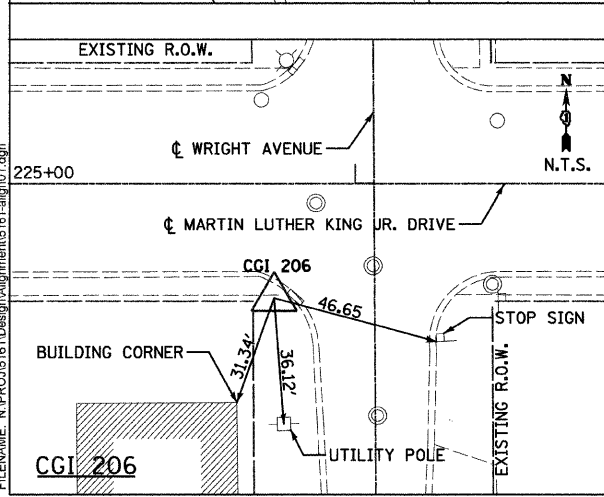
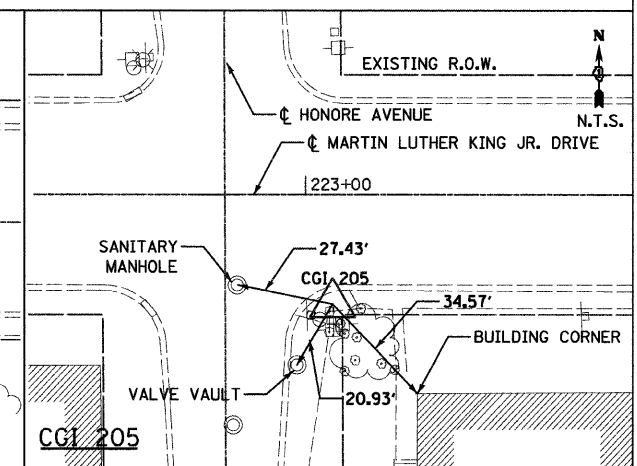
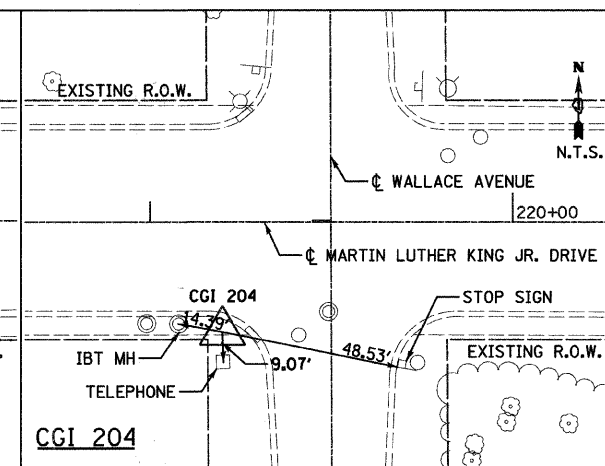
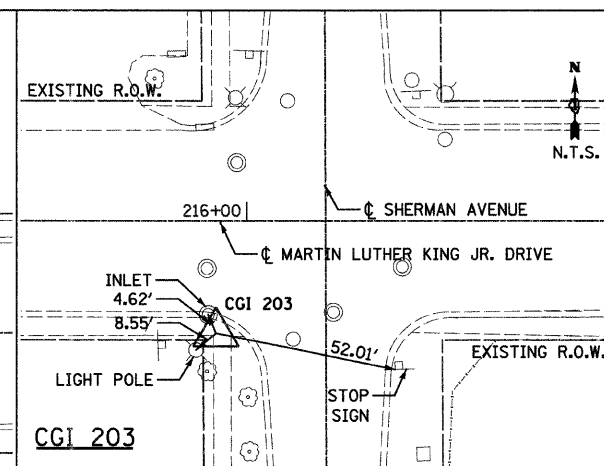
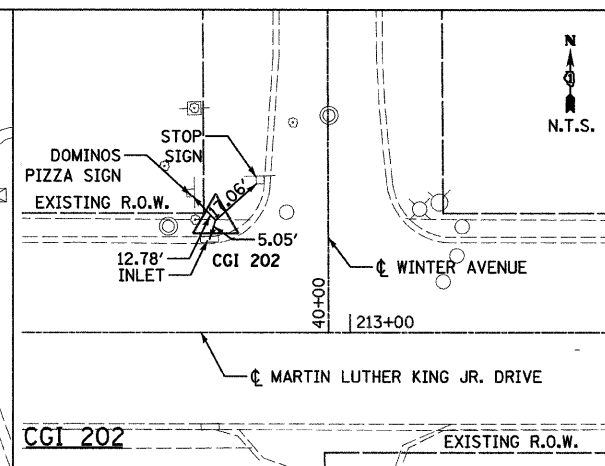
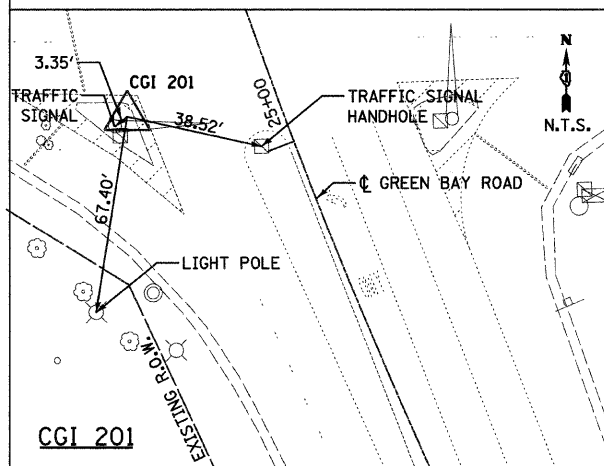
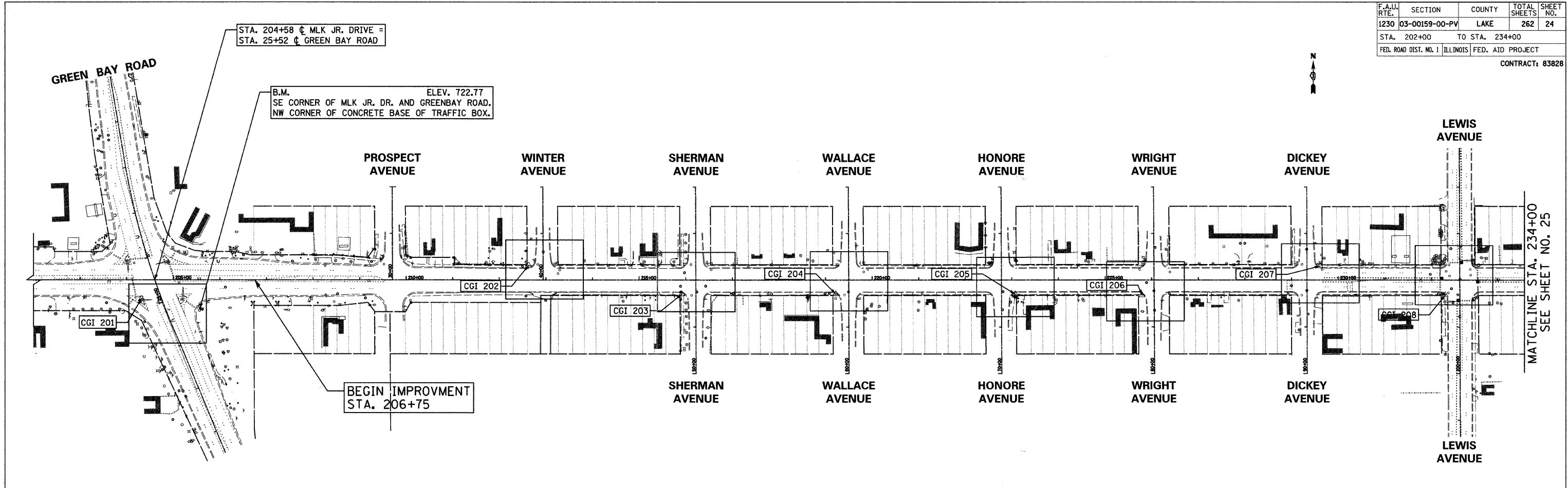


F.A.U. RTE.	SECTION	COUNTY	TOTAL SHEETS	SHEET NO.
1230	03-00159-00-PV	LAKE	262	24
STA. 202+00		TO STA. 234+00		
FED. ROAD DIST. NO. 1	ILLINOIS	FED. AID PROJECT		
CONTRACT: 83828				



CONTROL POINTS				
POINT NUMBER	NORTHING	EASTING	ELEVATION	DESCRIPTION
CGI 201	10,102.40	4,557.45	724.80	CHISELED 'X' SET IN ISLAND
CGI 202	10,144.18	5,393.81	716.31	CHISELED 'X' SET IN SIDEWALK
CGI 203	10,075.58	5,718.57	709.79	CHISELED 'X' SET IN SIDEWALK
CGI 204	10,064.67	6,049.39	702.19	CHISELED 'X' SET IN SIDEWALK
CGI 205	10,052.72	6,435.18	700.72	CHISELED 'X' SET IN SIDEWALK
CGI 206	10,041.25	6,705.02	696.66	CHISELED 'X' SET IN SIDEWALK
CGI 207	10,091.14	7,087.14	687.18	CHISELED 'X' SET IN SIDEWALK
CGI 208	10,019.47	7,356.13	683.36	CHISELED 'X' SET IN SIDEWALK

REVISIONS	
NAME	DATE

Clorba Group, Inc.
CONSULTING ENGINEERS
5507 North Cumberland Avenue, Suite 402 Chicago, Illinois 60656
Tel. 773.775.4009 Fax 773.775.4014 Email chicago@clorba.com

CITY OF NORTH CHICAGO
MARTIN LUTHER KING JR. DRIVE IMPROVEMENTS
SURVEY TIES AND BENCHMARKS
STA. 202+00 TO STA. 234+00

SCALE: 1"=100'
DATE: APRIL, 2008
DRAWN BY: KMS
CHECKED BY: MJL

DATE: 6/30/08
TIME: 10:06:36 AM
FILENAME: N:\PROJ\15161\Design\Alignment\15161-align01.dgn