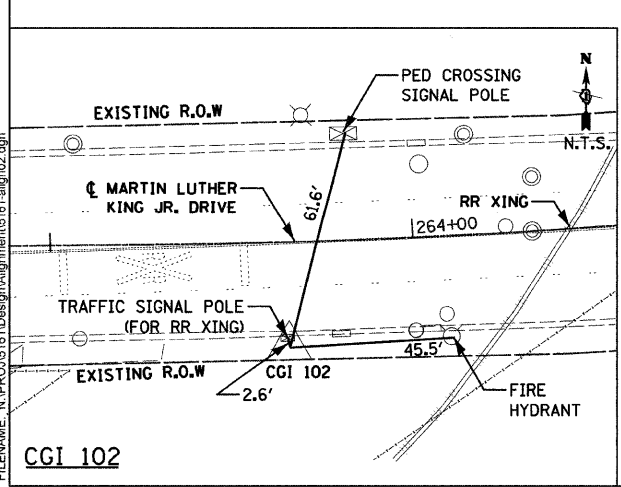
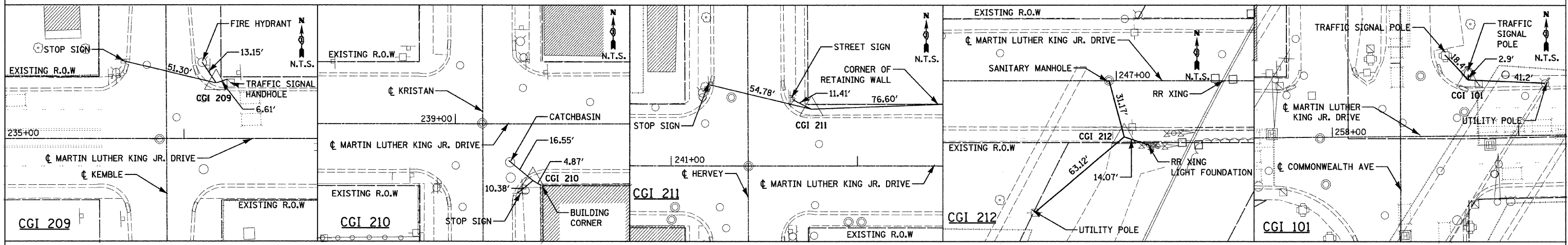
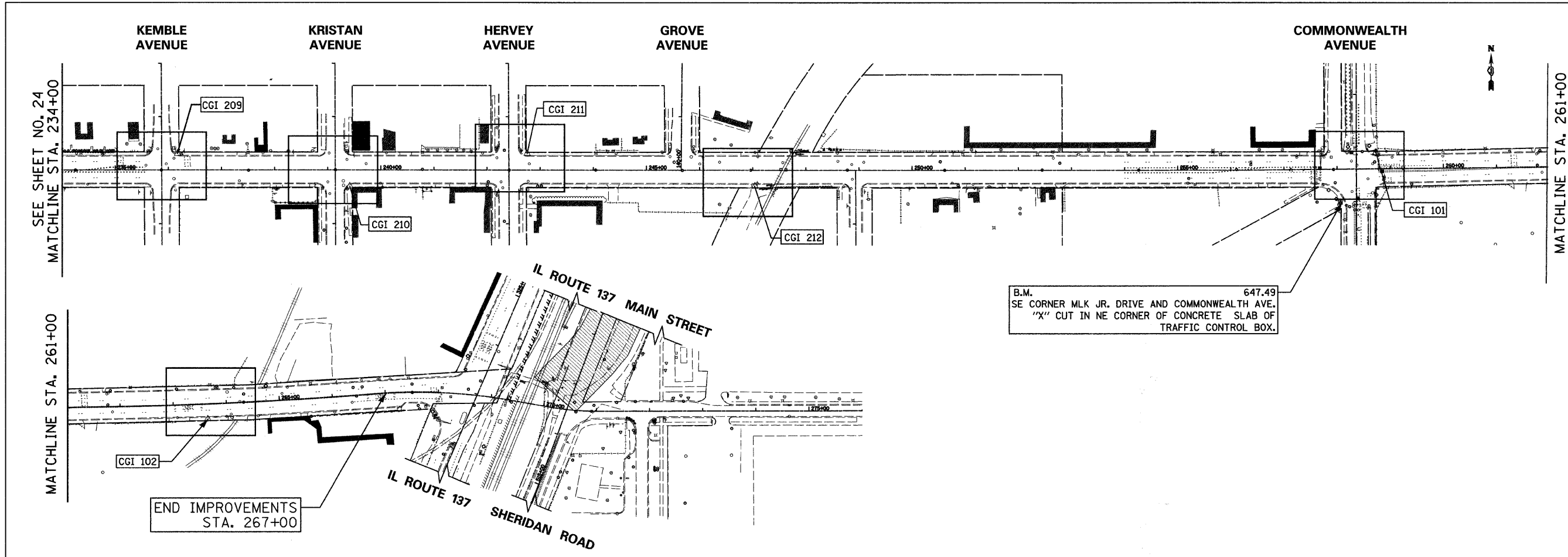


F.A.U. RTE.	SECTION	COUNTY	TOTAL SHEETS	SHEET NO.
1230	03-00159-00-PV	LAKE	262	25
STA. 234+00	TO STA. 267+00			
FED. ROAD DIST. NO. 1	ILLINOIS	FED. AID PROJECT		
CONTRACT: 83828				



CONTROL POINTS				
POINT NUMBER	NORTHING	EASTING	ELEVATION	DESCRIPTION
CGI 209	10,070.64	7,745.66	677.86	CHISELED 'X' SET IN SIDEWALK
CGI 210	9,999.59	8,069.20	668.06	CHISELED 'X' SET IN SIDEWALK
CGI 211	10,049.62	8,402.14	663.83	CHISELED 'X' SET IN SIDEWALK
CGI 212	9,975.09	8,829.57	662.90	CHISELED 'X' SET IN SIDEWALK
CGI 101	10,000.00	10,000.00	647.45	CHISELED 'X' SET IN SIDEWALK
CGI 102	9,933.81	10,490.88	649.02	CHISELED 'X' SET IN SIDEWALK

REVISIONS	
NAME	DATE

**Clorba Group, Inc.**  
CONSULTING ENGINEERS  
5507 North Cumberland Avenue, Suite 402 Chicago, Illinois 60656  
Tel. 773.775.4009 Fax 773.775.4014 Email chicago@clorba.com

CITY OF NORTH CHICAGO  
MARTIN LUTHER KING JR. DRIVE IMPROVEMENTS  
SURVEY TIES AND BENCHMARKS  
STA. 234+00 TO STA. 267+00

SCALE: 1"=100'  
DATE: APRIL, 2008

DRAWN BY: KMS  
CHECKED BY: M.J.L.

DATE: 8/30/2008  
TIME: 10:06:51 AM  
FILENAME: N:\PROJ\0511\Design\Alignments\61-align02.dgn